

OFFICIAL PROGRAMME 2/6

BRANDS HATCH

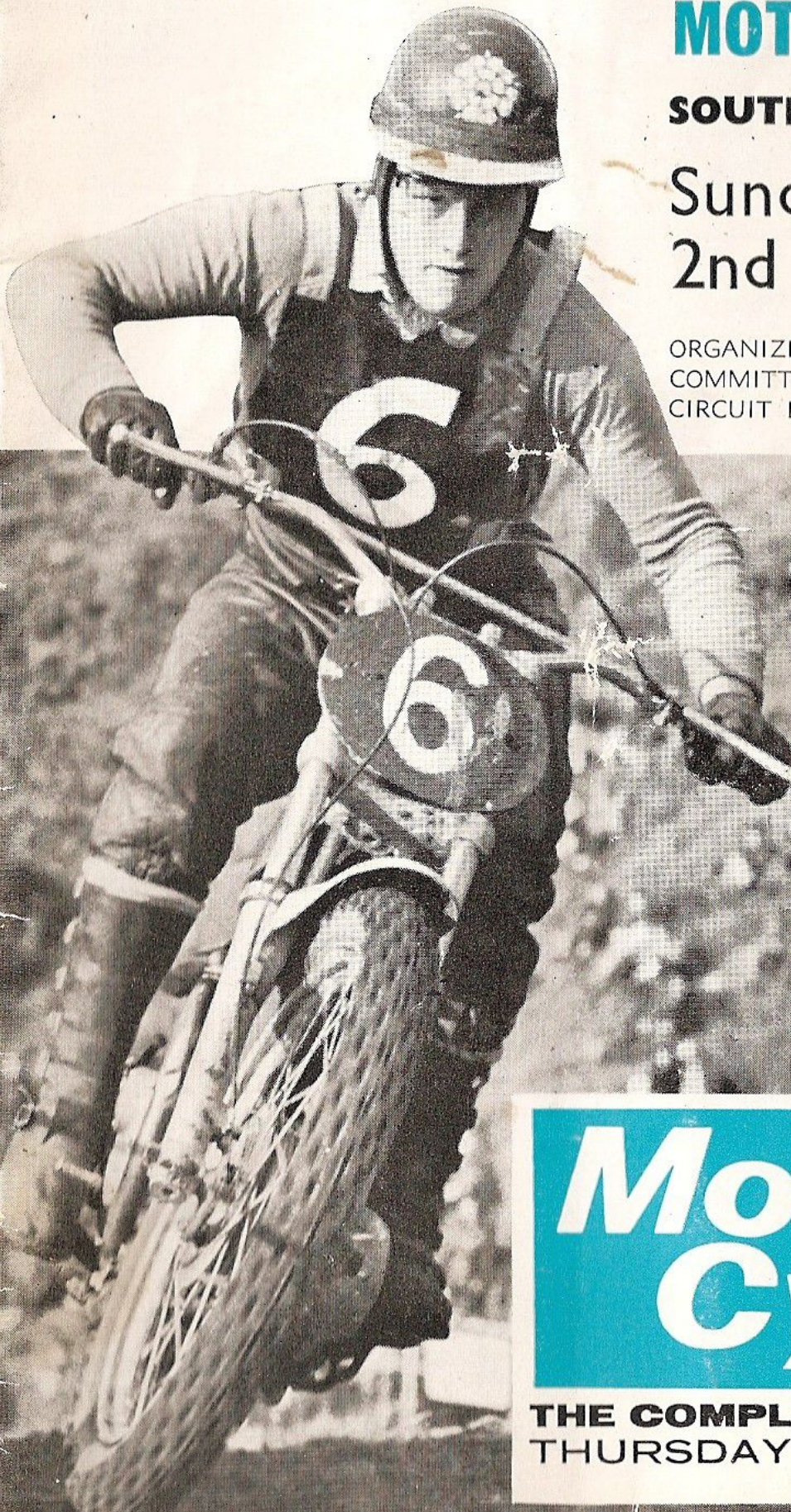
NORTH versus **SOUTH**

MOTO CROSS

SOUTHERN LEG

Sunday
2nd Jan 1966

ORGANIZED BY THE BRANDS RACING
COMMITTEE FOR BRANDS HATCH
CIRCUIT LIMITED



**Motor
Cycle**

THE COMPLETE MAGAZINE
THURSDAY 1s. 3d.

JOHN W. GROOMBRIDGE

MAYFIELD ROAD GARAGE, CROSS-IN-HAND

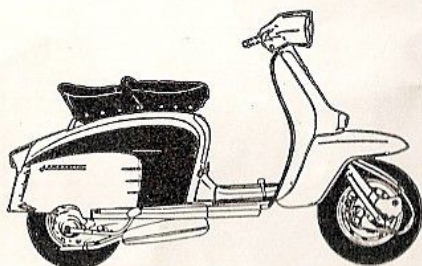
Telephone Heathfield 2466 (3 lines)

Hours: 8 a.m. to 9 p.m. (Mons. to Fris.) 8 a.m. to 5 p.m. (Sats.)
10 a.m. to 5 p.m. (Suns.) for spares and inspection only

For the LARGEST stock in the South

Come and see all the 1965 Models for Immediate Delivery

Triumph, B.S.A., Suzuki, Yamaha, Honda, Norton, Matchless, Ariel, A.J.S., Greeves, Barnett, Velocette, James, Enfield, Bond, Trojan, Reliant, Isetta, Lambretta, Vespa, Tina, Raleigh Roma, N.S.U. Quickly, etc., also Fiat and Skoda Cars — All for Immediate Delivery



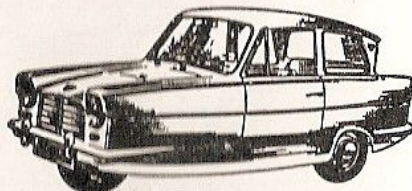
Over 550 New and Used Motor Cycles, Scooters and Mopeds. Over 80 Cars and Vans. Over 50 New and Used Three-Wheelers

All obtainable from 25% Deposit
15% on Mopeds

Almost anything taken in part exchange—Cycles, Radios, Cameras, Televisions, Watches or What-have-you?

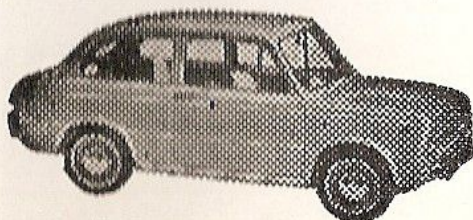
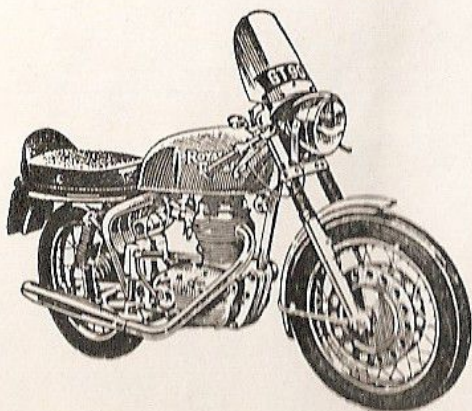
Over £25,000 worth of New Motor Cycle, Scooter and Three-Wheeler Spares. 24-hour C.O.D. Service Breaking most makes of motor cycles

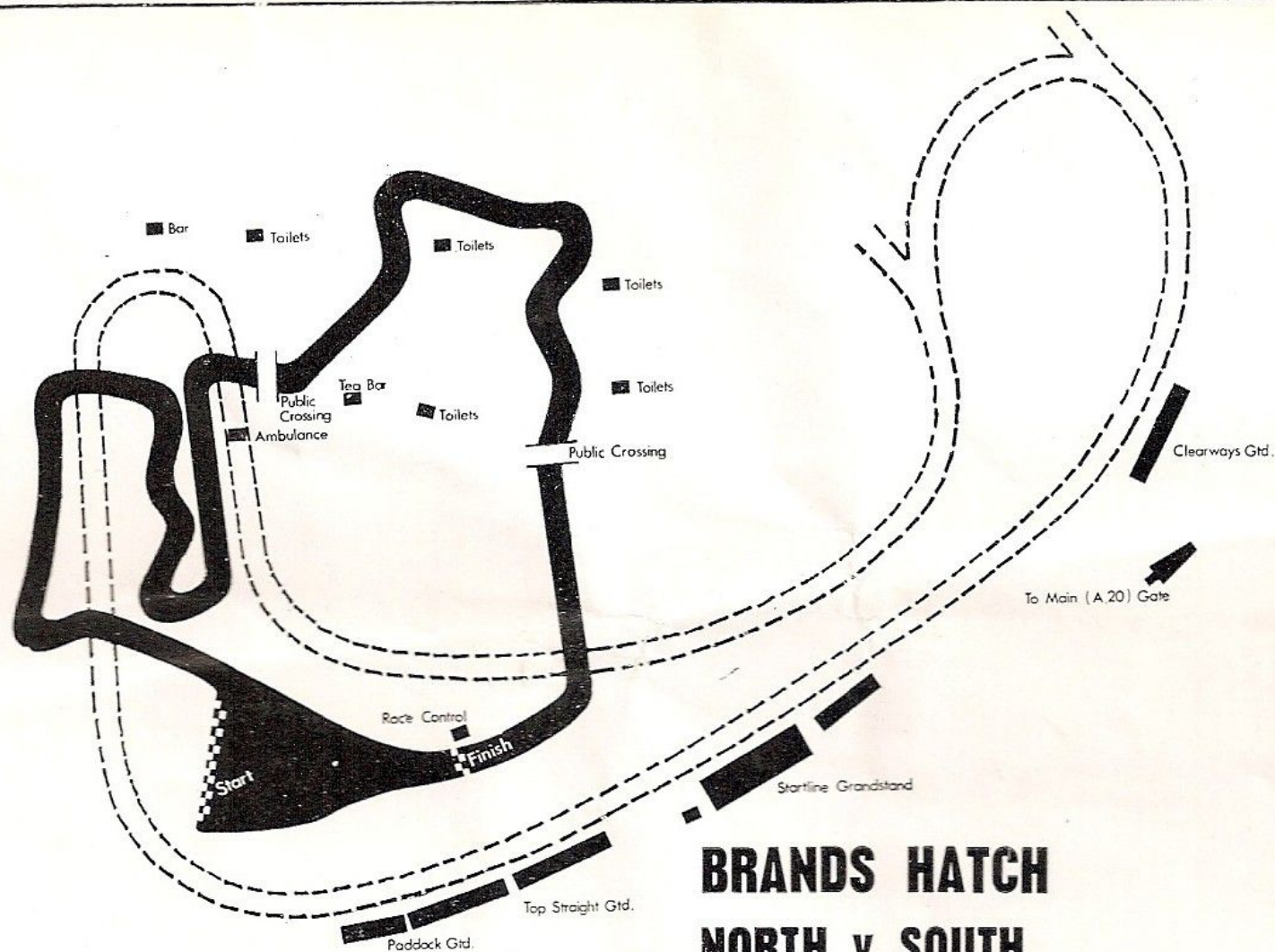
Cash waiting for Used Cars, Light Vans, Three-Wheelers, late clean Motor Cycles and Scooters



Send for our 70-page Catalogue of Used Bargains

Main Agents for all Motor Cycles, Scooters, Mopeds, Three-Wheelers, Fiat & Skoda Cars





BRANDS HATCH
NORTH v SOUTH
Moto Cross
SOUTHERN LEG
2nd Jan 1966



"I always read
**MOTOR
CYCLE
NEWS"**

says

**World Champion
JEFF SMITH**

who features prominently in the thrilling Television scrambles.

Jeff is one of the many stars who follow MOTOR CYCLE NEWS for its exclusive on the spot reports and pictures of scrambles, road races, grass tracks, trials and sprints.

Make sure you are first with the news and pictures by placing a regular order with your newsagent now.

**MOTOR
CYCLE
NEWS**

**WEDNESDAY
SIXPENCE**

NORTH versus SOUTH MOTO CROSS

SOUTHERN LEG

GRAVESEND EAGLES MOTORCYCLE CLUB
Affiliated to the S.E.C.A.-C.U.

SUNDAY 2nd. JANUARY 1966

BRANDS HATCH

ESTATE, KINGSDOWN, KENT.

T.C.C. No. 271

PERMIT No. Q 1866

REGIONAL RESTRICTED SCRAMBLE OPEN TO REGISTERED MEMBERS OF
SOUTH EASTERN CENTRE OF THE A.C.U. AND NOMINATED DRIVERS
COMPRISING THE NORTH AND SOUTH TEAMS. FOR SOLO
AND THREE-WHEELER M/CS.

*Held under the General Competition Rules, the Standing Regulations of the A.C.U.
and SUPPLEMENTARY REGULATIONS*

PRACTICE

Each driver/passenger must sign on before practice and complete a minimum of
2 laps practice. The practice periods will be from 2.00 to 4.00 p.m. on Saturday,
1st January, 1966, and from 9.00 to 10.30 a.m. on Sunday, 2nd January, 1966.

The Sunday Practice will be divided :—

9.00 a.m. to 9.30 a.m.	Solos
9.30 a.m. to 10.00 a.m.	Threewheelers
10.00 a.m. to 10.30 a.m.	Solos

RACING COMMENCES AT 12.00 NOON

OFFICIALS

Officials :

Appointed by A.C.U. —
E. W. Swann

Appointed by S.E.C. A.C.U. —
J. Walby

Appointed by the Club —
A. Lovett & J. Fordham

Clerk of the Course :

R. A. Hill

Scrutineers :

W. R. Smith , R. Percival
E. Walker

Judge :

J. Carr

A.C.U. Timekeepers :

C. Clapp (International Grade)

Assisted by :

M. Micklewright
(appointed by the Club)

Secretary of the Meeting :

H. J. Gillies,
2 Bassetts Close,
Farnborough, Kent.

Press Officers :

D. Reach, M. Scott

Commentators :

Peter Arnold, Anthony Marsh

Manager of Southern Team :

R. Holbrook,
12 The Parade,
Upper Brockley Rd., S.E.4

Manager of Northern Team :

C. Hutchinson,
27 Sandown Close,
Bagby, Thirsk, Yorks.

BRANDS HATCH CIRCUIT LTD. —

Managing Director :

John Webb

General Manager :

C. J. D. Lowe

For the Attention of Spectators

Please do not leave litter about the grounds — take it with you.

The Gravesend Eagles M.C.C. and Brands Racing Committee acknowledge with thanks the valuable assistance given by the individual marshals in conducting this event.

If an accident occurs, leave it to the marshals, the doctors and St. John Ambulance men who are in attendance.

Remember to drive with care and caution when leaving the ground.

To safeguard both competitors and public, *dogs are not admitted unless kept on a leash. This is most important.*

PROHIBITED AREA NOTICES: The public are not admitted in the areas where these notices are displayed. The fences are there for protection, and any person or persons found trespassing, or wilfully damaging trees, fences, etc., will be prosecuted by Brands Hatch Circuit Ltd.

Advice of Results

The result of each race will be announced by the public address system.

Reports on the racing are made in "THE MOTOR CYCLE," "MOTOR CYCLING" and "MOTOR CYCLE NEWS," published weekly.

Condition of Admission

Spectators attending the track do so entirely at their own risk. It is a condition of admission that the Brands Hatch Circuit Limited and all persons having any connection with the promotion and/or organisation and/or conduct of the meeting (including the drivers and owners of vehicles and passengers in vehicles) are absolved from all responsibility and liability whatsoever from negligence, or by accident causing loss, damage or personal injury to spectators or ticket holders, or to their goods or vehicles.

Postponement of the Meeting

The Club reserves the right to postpone or cancel the meeting.

GILBERTS OF CATFORD

SALES & EXCHANGE HONDA TUNING & SERVICE

ALL MODELS IN STOCK. HUGE STOCK OF SPARES. GENEROUS PART EXCHANGES ON ANY MAKE AND ANY TYPE OF MACHINE.

WANTED FOR CASH - GOOD MACHINES

LARGE STOCK OF USED MACHINES. HIRE PURCHASE FACILITIES AVAILABLE.

306, SANGLEY ROAD CATFORD, S.E.6

Hither Green 3155

Programme of Events

Race Nos.

EVENT 1.	SOUTH EASTERN JUNIORS MOTO CROSS Solos, 175 c.c. up to 1000 c.c., 2 Legs of 4 Laps	1 and 6
EVENT 2.	SOUTH EASTERN EXPERTS MOTO CROSS Solos, 175 c.c. up to 1000 c.c. 2 Legs of 8 Laps	3 and 7
EVENT 3.	SOUTH EASTERN THREE-WHEELERS MOTO CROSS Three-Wheelers up to 1200 c.c. 2 Legs of 6 Laps*	4 and 9
EVENT 4.	NORTH versus SOUTH CHALLENGE MOTO CROSS Solos, 175 c.c. up to 1000 c.c. 3 Legs of 10 Laps	2, 5 and 8
EVENT 5.	ALLCOMERS INVITATION Invited Drivers. Solos, 175 c.c. to 1000 c.c. 10 Laps	10

*The number of Laps for Three-Wheelers has been increased from those published in Supplementary Regulations owing to use of shortened course

Awards

	<i>1st</i>	<i>2nd</i>	<i>3rd</i>	<i>4th</i>	<i>5th</i>	<i>6th</i>
EVENT 1. ...	80/-	60/-	40/-	30/-	20/-	10/-
EVENT 2. ...	200/-	100/-	80/-	60/-	40/-	20/-
EVENT 3. ...	200/-	100/-	80/-	60/-	40/-	20/-
EVENT 4. ...	All Drivers in Winning Team in each Leg will receive £2					
EVENT 5. ...	300/-	200/-	120/-	100/-	80/-	60/-

Flag Signals

NATIONAL FLAG	START (OR LIGHTS)
Yellow Flag with Black Cross	Last Lap
Yellow Flag	Caution
Black and White Check Flag	Finish
Red Flag	Dangerous, Stop

Course

Approximately One Mile in length, with hills and gradients. Races will be run in an anti-clockwise direction; any driver leaving the course must return to the point at which he left it or be excluded.

Start

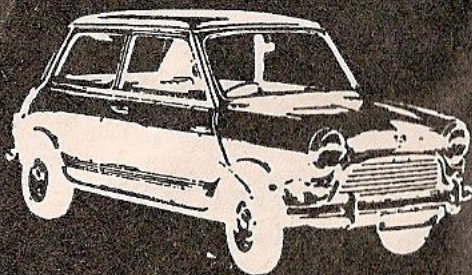
Massed start with engines running. Any driver not reporting to the Paddock Assembly Point when called will be deemed a non-starter. Start will be on the extinction of starting lights. Positions on the starting line will be decided by ballot.

Warning

MOTOR RACING IS DANGEROUS

You are present at this meeting entirely at your own risk and the admission is SUBJECT to the CONDITIONS that all persons having any connection with the promotion and/or organisation and/or conduct of the Meeting including the owners of the land and the drivers and owners of the vehicles are absolved from all liability in respect of personal injury (whether fatal or otherwise) to you or damage to your property howsoever caused.

**PERSONS CROSSING THE COURSE, OR IGNORING THE COURSE MARSHALS,
DO SO AT THEIR OWN RISK**



Pullin's
of Dulwich
(ESTABLISHED OVER 40 YEARS)

OFFICIALLY APPOINTED 100% B.M.C. DEALERS, SALES & SERVICE

**WHY NOT BRING THE FAMILY TO THE NEXT MEETING IN A "MINI"?
WE CAN TAKE YOUR PRESENT VEHICLE (CAR, MOTORCYCLE, SCOOTER)
IN PART EXCHANGE, ARRANGE LOW INTEREST HIRE PURCHASE TERMS,
QUOTE YOU THE BEST INSURANCE RATES, AND IN FACT OFFER A
COMPREHENSIVE SERVICE TO SUIT YOU.**

STOCKISTS OF STYLA, G.N. & SPEEDWELL EQUIPMENT

**Also Agents for:— B.S.A., ARIEL, LAMBRETTA, TRIUMPH, ROYAL ENFIELD & HONDA.
Everything for the Motorcyclist, including Clothing, Boots, Helmets, etc. Spares,
Repairs and M.O.T. Testing.**

CONTACT OUR AGENTS IN THE PADDOCK

**CALL, WRITE OR PHONE. OPEN SUNDAY MORNINGS.
EAST DULWICH ROAD BRANCH, CORNER OF OAKHURST GROVE**

**NEW SHOWROOMS 84/86 Lordship Lane, S.E.22
OPEN SUNDAY MORNINGS • Tel.: TOW 6272-2314-2834**

1966 SEASON BROOCHES

Ideal presents

ORDER NOW AND SAVE UP TO 70%

**BRANDS HATCH
MALLORY PARK
SNETTERTON**

Please send me 1966 Season Brooches and Reserved Car Park label as follows:

Brands Hatch 1966 Car Season

FIVE GUINEAS. Admitting to public enclosures and Paddock for all 36 events (except Grand Prix and Kart and Stock Car meetings)

FOUR GUINEAS. Members of the BRSCC and Circuit Car Clubs

THREE GUINEAS only for each accompanying lady or child

Mallory Park 1966 Car Season

FOUR GUINEAS. Admitting to public enclosures and Paddock for all 18 events

THREE GUINEAS. Members of the BRSCC and Circuit Car Clubs

TWO GUINEAS only for each accompanying lady or child

Snetterton 1966 Car Season

FOUR GUINEAS. Admitting to public enclosures and Paddock for all 18 events

THREE GUINEAS. Members of the SMRC, BRSCC and Circuit Car Clubs

TWO GUINEAS only for each accompanying lady or child

Brands Hatch 1966 Motorcycle Racing & Scrambles

FIFTY SHILLINGS. Admitting to public enclosures for all 15 events including three Internationals

Mallory Park 1966 Motorcycle Racing

TWO GUINEAS. Admitting to public enclosures for all 10 events including three Internationals

Snetterton 1966 Motorcycle Racing

THIRTY SHILLINGS. Admitting to public enclosures for all 16 events, including one International and three National

PARKING FREE—CAR AND MOTORCYCLE EVENTS

Normal Cost	COST	£	s.	d.
£15.17.0	£5.5.0		
	£4.4.0		
	£3.3.0		
£9.18.6	£4.4.0		
	£3.3.0		
	£2.2.0		
£9.0.0	£4.4.0		
	£3.3.0		
	£2.2.0		
£6.0.0	£2.10.0		
£4.15.0	£2.2.0		
£5.0.0	£1.10.0		
TOTAL		£		

Send this application form and your remittance to the appropriate circuit:

Brands Hatch Circuit Ltd.
Fawkham, Nr. Dartford,
Kent.

Mallory Park Circuit Ltd.
Kirkby Mallory,
Leicester.

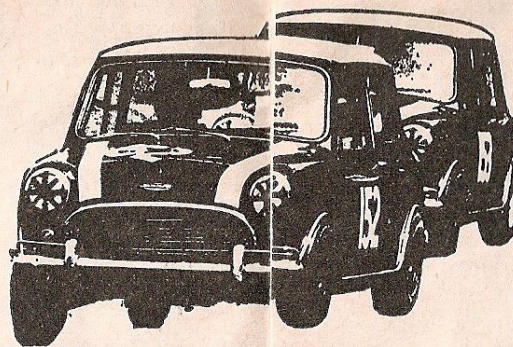
Snetterton Circuit Ltd.
Attleborough,
Norfolk.

NAME.....

ADDRESS.....

CLUB (if applicable)..... Membership No.....

you too can drive on a race track



BY JOINING THE
Brands Hatch Motor Club
Snetterton Motor Racing Club
Mallory Park Motor Club



For 2 or 3 guineas a year you can experience something new in Motor Club enjoyment.

CONSIDER THESE BENEFITS

DRIVE ON A RACE TRACK

When you join a circuit car club you will be sent three tickets each entitling you to 20 laps driving your own silenced road car round the Brands Hatch, Snetterton and Mallory Park race tracks. All three circuits are open for this purpose on Tuesday and Thursday evenings each week during the summer, and on certain weekend days throughout the year. Each track is properly supervised and now has permanent catering services. Members are covered automatically by legal liability insurance and low-cost personal accident insurance is available as an optional extra.

DRIVE ON A SKID ROAD

You also receive three more tickets, each entitling you to a weekend practice session on the Brands Hatch skid road, built specially for the High Performance Course of the British School of Motoring. In your own car you can spin safely on the special mastic surface through 360 degrees from only 20 m.p.h.

DRIVE ON A KART TRACK

As a circuit car club member you will be able to use, at each circuit, on prior notice, a go-kart, a kart amusement track, and a crash helmet for only 7s. 6d. per 10-lap session instead of the normal charge of 10s.

CHEAPER SPECTATING

You can also purchase, at a guinea less than the public rates, low-cost car race spectator season brochures for yourself, one other male, and up to four ladies and children, at one or all of the three circuits involved. These admit your car to any public park and all brooch holders to the paddock and any normal viewing area. At Brands Hatch a season brooch costs 4 gns. for adult males, and 3 gns. only for ladies and children, compared with individual admission tickets totalling more than £16 in yearly cost. At Mallory Park and Snetterton the brochures cost 3 gns. for males and 2 gns. for ladies and children for over £9 normal value.

ENJOY A CIRCUIT

Close to the paddock at Brands Hatch and Snetterton, and to the hairpin at Mallory Park, members have their own modern-style motoring pubs and clubhouse. They are open every Tuesday and Thursday evenings, at weekends, and on all practice and race days. Apart from their attractive

CLUBHOUSE

bars, set against a background of motor badges and paintings, the clubhouses are also equipped with music and amusements. The clubhouses are also the scene of members' film shows, dances and cocktail parties in honour of racing drivers and other motoring personalities.

MEMBER OF ONE-MEMBER OF THREE

Membership of any one circuit car club allows you and up to two guests to use the clubhouses at Mallory Park, Snetterton and Brands Hatch. Similarly, members of any one circuit car club are also automatically

members of the other two, and are entitled to exchange skid-road and race-track tickets (when applicable), to use the other facilities at concession rates, and to enjoy full clubhouse privileges.

YOUR OWN MAGAZINE

Through the post every month you will receive a copy of "Sportscar" (post-free value 30s. a year). It will come to you not as a mere club journal, but as a lively illustrated review, full of race reports, road-tests

and motor sporting personalities—all in pictures. "Sportscar" is edited by John Blunsden and Darryl Reach, part of the team that produces its lively companion journal "Motor Racing".

DRIVE IN A SPRINT

The B.R.S.C.C. now organises exclusively for members of circuit car clubs, sprint meetings at Brands Hatch, Mallory and Snetterton. Race meetings as such are not envisaged.

as the promoters do not wish to conflict with, or undermine the excellent facilities offered by other motor-sporting clubs.

DON'T MISS THESE FACILITIES. MAKE LEADING MOTOR YOUR SOCIAL

UNIQUE BRITAIN'S RACE-TRACKS RENDEZVOUS

JOIN TODAY

Display a proud emblem

Each circuit car club has its own distinctive emblem which is reproduced on transfers, car and lapel badges, and on club ties.

Subscription Rates

For 3 gns. a year (2 gns. if a B.R.S.C.C. member) you can enjoy all the advantages described in this leaflet. (Track membership). For 2 gns. a year you can enjoy all the advantages described in this leaflet, except drive on the tracks and skid roads. (Social membership).

How to join

Complete the application form below and send it, with your remittance to:—

The Secretary :
Brands Hatch Motor Club,
c/o Brands Hatch Circuit Ltd.,
Fawkham, Dartford, Kent.

The Secretary :
Mallory Park Motor Club,
c/o Mallory Park Circuit Ltd.,
Kirkby Mallory, Leicester.

The Secretary :
Snetterton Motor Racing Club,
Old Buckenham Hall, Attleborough, Norfolk.

Tel: West Ash 331

Tel: Earl Shilton 3306

Your membership card and further details concerning track use and season brochures will be forwarded immediately.

FULL MEMBERSHIP APPLICATION FORM

Dear Sir,

Please enrol me as a member of the: Brands Hatch Motor Club, The Snetterton Motor Racing Club, The Mallory Park Motor Club. Please also send me the following:—

..... ties (green, blue, maroon) at 15s. each	...	£	s.	d.
..... lapel badges (pin) at 3s. 6d. each	...			
..... car badges at £1 5s. each	...			
..... 3 in. transfers at 1s. each	...			
I also enclose:—				
3 gns. for twelve months track membership	...			
2 gns. for twelve months social membership	...			

TOTAL £

(Delete the inapplicable.)

Please make your cheque payable to the club of your choice.

NAME

ADDRESS

TELEPHONE NUMBER

List of Competitors

No.	Name	c.c.	Machine	Town
1	D. Bickers	250/360	Greeves	Coddensham
2	J. Burton	490	Metisse	Lutterworth
3	A. Lee	500	Metisse	Hauxton
4	J. V. Smith	440	B.S.A.	Streetly
5	D. Nicoll	500	Matchless	Newport
6	C. Horsfield	250/360	C.Z.	Hampton Lucy
7	B. Goss	250	Husqvarna	Yetminster
8	P. Lamper	250	Greeves	Altringham
9	W. Gwynne	250	Greeves	Banbury
10	M. Andrews	498	Matchless	Matlock
11	J. Giles	440	B.S.A.	Pembury
12	E. Greer	250	Metisse	Coleshill
13	B. D. Piggott	500	Metisse	Westonham
14	B. Nadin	500	Stallard	Stafford
15	J. Lewis	500	Matchless	Rhayader
16	R. Peplow	500	Triumph	Kingswinford
17	K. Heanes	500	Triumph	Fleet
18	J. Done	250	Greeves	Knutsford
19	J. Aim	500	Kirby/Matchless	Halstead
20	A. Clough	360	Greeves	Cheadle Hulme
21	J. Banks	440	B.S.A.	Bury St. Edmunds
22	B. Wade	250	Greeves	Barnard Castle
23	V. Eastwood	440	B.S.A.	Oxford
24	A. J. Lampkin	440	B.S.A.	Silsden
25	K. Hickman	500	Cheney/B.S.A.	Oxford
26	A. R. Lampkin	440	B.S.A.	Silsden
27	F. K. Mayes	250	Greeves	West Wrattling
28	R. Tate	250	Dot	Northallerton
29	J. Scott	500	B.S.A.	Parkstone
30	R. Dickinson	Barrow-in-Furness
31	A. Bastick	500	Tribsa	Orpington
32	W. Holdaway	250	R.E.K. Twin	Dorking
33	W. V. Horton	250	Greeves	Thames Ditton
34	A. M. Chant	650	Tribsa	Bexleyheath
35	R. G. Wilsher	500	Tribsa	New Cross
36	I. V. Browne	250	Greeves	Hassocks
37	W. K. Bryant	500	B.S.A.	Farnborough
38	D. J. Sturdey	250	Greeves	Farningham
39	W. Kempself	250	Greeves	Tooting
40	M. J. Roberts	500	Tribsa	Tooting
41	R. E. Arthur	500	Tribsa	Eltham
42	R. Atkinson	250	Dot	East Finchley
43	P. Barnett	500	Tribsa	Cranleigh
44	H. V. Browne	500	Matchless	Hassocks
45	A. C. Warren	250	Greeves	Mottingham
46	T. Leach	250	Greeves	Guildford
47	H. M. Trinder	250	Greeves	Abingdon
48	N. Capstick	250	Greeves	Crawley
49	D. R. Edwards	500	Tribsa	Dorking
50	A. Taylor	350	Matchless	Woking
51	B. E. Sturdey	250	Greeves	Farningham
52	D. Hughes	250	E.M.K.	Bellingham
53	A. J. Smith	500	Matchless	Tonbridge
54	B. W. Slark	500	Tribsa	Eltham
55	R. Gaylard	650	Tribsa	Houghton Regis
56	R. Bullen	250	Bultaco	Eltham
57	K. J. Thorpe	250	Bultaco	Bracknell
58	D. G. Hiscock	500	Cyclone	Hildenborough
59	E. T. Knighton	250	Greeves	Forest Gate
60	J. R. Holder	500	Mabsa	Sidcup

List of Competitors (Cont.)

No.	Name	c.c.	Machine	Town
61	T. Sudds	...	500 Mabsa	Blackheath
62	C. Clark	...	500 Tribsa	Woolwich
63	J. Jacombs	...	500 Tribsa	Sanderstead
64	T. Wales	...	500 Tribsa	Cudham
65	D. J. Keech	...	500 Matchless	Eltham
66	D. J. Fox	...	500 Tribsa	Croydon
67	D. Hitchcock	...	500 J.A.H.	Folkestone
68	C. Mullan	...	250 Cotton	Shepperton
69	P. H. Goldsmith	...	500 Tribsa	Eltham
70	D. Windsor	...	500 Delta	Croydon
71	C. Taylor	...	250 Greeves	Haywards Heath
72	A. J. Clarke	...	500 Goldstar	Biggin Hill
73	B. Colson	...	250 Greeves	Isleworth
74	P. Clayton	...	250 Greeves	Guildford
75	B. Skinner	...	500 Matchless	Beckenham
76	F. C. Baker	...	440 B.S.A.	Crawley
77	M. Dearn	...	250/500 Metisse	Charlwood
78	L. Neve	...	440 B.S.A.	Brixton
79	E. T. Deeley	...	250 Greeves	Aylesbury
80	G. Everett	...	250 Greeves	Stanford Le Hope
81	D. Burns	...	250 Greeves	Surbiton
82	G. Beamish	...	350 B.S.A.	Portslade
83	P. G. Hole	...	440 B.S.A.	St. Ives
84	J. Pringle	...	500 Matchless/Metisse	Plumstead
85	R. East	...	500 Matchless/Metisse	Plumstead
86	G. Gower	...	500 Matchless/Metisse	Plumstead
87	W. Cawte	...	250 Bultaco Metisse	Fareham
88	R. Wickens	...	500 Purette	Tunbridge Wells
89	T. Leadbitter	...	500 Metisse	Longdon
90	J. Harrison	...	250 Dot	Pontefract
91	C. Adsett	...	500 Metisse	Godalming
92	D. Smith	...	250/500 Greeves Special	Ash
93	M. Peach	...	250 Bultaco/Metisse	Eastbourne
94	G. King	...	500 Metisse	Aston Clinton
95	J. Clayton	...	440 B.S.A.	Guildford
96	B. Nutley	...	500 Davis/B.S.A.	Wokingham
97	A. J. Hogg	...	500 Metisse	Meopham
98	C. G. Dixon	...	500 Cheney/B.S.A.	Crookham
99	R. H. Farrow	...	500 Triumph/Griffin	Camberley
100	T. Cox	...	250 Husqvarna/ 500 Metisse	Keinton Mandeville

WHEN CHANGING FROM TWO TO FOUR WHEELS COME
TO US FOR YOUR **NEW IMP** AND ALL OTHER
ROOTES PRODUCTS

IMP TUNING KITS NOW AVAILABLE FROM US

SPRINGETT'S SERVICE STATION

(Proprietors: Springetts Garage Ltd.)

62, MAIDSTONE ROAD, PADDOCK WOOD, KENT.

TELEPHONE: 450

BRANDS HATCH FIXTURES 1966

Date	EVENT	Races	Charges
16 Jan.	Civil Service M.C. Trial	Various	No Charge
23 Jan.	BRSCC Racing Car Show Trophy Races	FL/F3/S/GT/T	10s.A, 2/6d.C, 10s.S, 10s.P, 2/6d.Pr
30 Jan.	National Kart Races	1 Sport, all 4s.	7/6d.A, CF, PF, SF
6 Feb.	Circle Car Club Sprint	S/GT/T	3/6d.A, CF, Rovers
13 Feb.	Mini-Y Clubmans Car Races	Saloons only	7/6d.A, CF, Rovers
20 Feb.	Sutton & Cheam Motor Club Sprint	S/GT/T	3/6d.A, CF, Rovers
27 Feb.	Surrey Sporting M.C. Sprint	S/GT/T	3/6d.A, CF, Rovers
5 Mar.	Clubmans Motor Cycle Races	All Classes	7/6d.A, CF, 2/6d.Pr, Rovers
6 Mar.	BRSCC Autosport Cup Car Races	FL/F3/S/GT/T	10s.A, 2/6d.C, 2/6d.Pr, Rovers
13 Mar.	*Redex Trophy National Motor Cycle Races	All Classes	10s.A, 2/6d.C, 5s.S, 10s.P, 2/6d.Pr
20 Mar.	Maidstone & M.K.M.C. Kent Cup Car Races	FL/F3/S/GT/T	10s.A, 2/6d.C, 2/6d.Pr, Rovers
27 Mar.	National Kart Races	1 Sport, all 4s.	7/6d.A, CF, PF, SF
3 April	Tunbridge Wells M.C. Sprint	S/GT/T	3/6d.A, CF, Rovers
8 April	*King of Brands National Motor Cycle Races	All Classes	10s.A, 2/6d.C, 10s.S, 10s.P, 2/6d.Pr
10 April	"First-Ever" Stock Car Races	All Classes	7/6d.A, 2/6d.C, 5s.S, 2/6d.Pr
11 April	BRSCC Oxfam Trophy Car Races	FL/F3/S/GT/T	10s.A, 2/6d.C, 10s.S, 10s.P, 2/6d.Pr
17 April	750 M.C. Clubmans Car Races	FL/F3/S/GT/T	7/6d.A, CF, 2/6d.Pr, Rovers
24 April	BARC Clubmans Car Races	FL/F3/S/GT/T	7/6d.A, CF, 2/6d.Pr, Rovers
1 May	Camathias Memorial National Motor Cycle Races	All Classes	10s.A, CF, 10s.S, 2/6d.Pr
8 May	*BRSCC ILFORD 500-MILE GT RACE	GT/T/F3	15s.A, CF, 2/6d.Pr, Rovers
15 May	INTERNATIONAL KART RACES	1 Sport, all 4s.	7/6d.A, CF, PF, SF
22 May	Brandmaster Trophy Stock Car Races	All Classes	7/6d.A, 2/6d.C, 5s.S, 2/6d.Pr
29 May	A.C. Owners Club Sprint	S/GT/T	3/6d.A, CF, Rovers
30 May	BRSCC £500 Leston Cup Car Races	F3/S/GT/T	10s.A, 2/6d.C, 10s.S, 10s.P, 2/6d.Pr
30 May	*"EVENING NEWS" INTERNATIONAL MOTOR CYCLE RACES	All Classes	10s.A, 2/6d.C, 10s.S, 10s.P, 2/6d.Pr
5 June	National Kart Racing	1 Sport, all 4s.	7/6d.A, CF, PF, SF
11 June	Clubmans Motor Cycle Races	All Classes	7/6d.A, CF, 2/6d.Pr, Rovers
12 June	Thames Estuary C.C. & Mid-Surrey A.C. Clubmans Car Races	FL/F3/S/GT/T	7/6d.A, CF, 2/6d.Pr, Rovers
19 June	London Motor Club Radio London Car Races	FL/F3/S/GT/T	10s.A, 2/6d.C, 2/6d.Pr, Rovers
26 June	*INTERNATIONAL GRAND PRIX D'ENDURANCE 500-MILE PRODUCTION MOTOR CYCLE RACE		10s.A, CF, 2/6d.Pr, Rovers
3 July	BRSCC Clubmans Car Races	FL/F3/S/GT/T	7/6d.A, CF, 2/6d.Pr, Rovers
10 July	MG Car Club Clubmans Races	FL/F3/S/GT/T	7/6d.A, CF, 2/6d.Pr, Rovers
16 July	*RAC BRITISH GRAND PRIX sponsored by the "Daily Mail"	FL/SR/T	20s.A, 5s.C, S: 40s., 30s., 20s., 20s.P, PF
17 July	National Kart Races	1 Sport, all 4s.	7/6d.A, CF, SF, PF
24 July	Jaguar Drivers Club & BP Auto Club Sprint	S/GT/T	3/6d.A, CF, Rovers
31 July	Stars of Tomorrow Novices Motor Cycle Races	All Classes	7/6d.A, CF, 2/6d.Pr, Rovers
7 Aug.	Kent Championships Stock Car Races	All Classes	7/6d.A, 2/6d.C, 5s.S, 2/6d.Pr
14 Aug.	BARC S.E. Centre Sprint	S/GT/T	3/6d.A, CF, Rovers
21 Aug.	BRSCC St. John Trophy Car Races	FL/F3/S/GT/T	10s.A, 2/6d.C, 10s.S, 10s.P, 2/6d.Pr
28 Aug.	*"EVENING NEWS" INTERNATIONAL "HUTCHINSON 100" MOTOR CYCLE RACES	All Classes	10s.A, 2/6d.C, 10s.S, 10s.P, 2/6d.Pr
29 Aug.	BARC Clubmans Race Meeting	S/GT/T	7/6d.A, CF, 2/6d.Pr, Rovers
3 Sept.	Race of Stars Stock Car Races	All Classes	7/6d.A, 2/6d.C, 5s.S, 2/6d.Pr
4 Sept.	N. London Enthusiasts/OAC Sprint	S/GT/T	3/6d.A, CF, Rovers
11 Sept.	*BRSCC GUARDS INTERNATIONAL RACES	SR/F3/S/T/Hist.	15s.A, 5s.C, 20s.S, 10s.P, 2/6d.Pr
18 Sept.	Stars of Tomorrow Clubmans Motor Cycle Races	All Classes	7/6d.A, CF, 2/6d.Pr, Rovers
25 Sept.	British Kart Championships	All Classes	7/6d.A, CF, SF, 5s.P, 2/6d.Pr
2 Oct.	INTERNATIONAL 250 cc TROPHÉE DES NATIONS sponsored by the "Daily Sketch"	All Classes	10s.A, 2/6d.C, 2/6d.Pr, Rovers
9 Oct.	Sevenoaks & DMC Clubmans Races	FL/F3/S/GT/T	7/6d.A, CF, 2/6d.Pr, Rovers
16 Oct.	King of the Sticks Stock Car Races	All Classes	7/6d.A, 2/6d.C, 5s.S, 2/6d.Pr
23 Oct.	Herts A.A.C. Sprint	S/GT/T	3/6d.A, CF, Rovers
29 Oct.	*INTERNATIONAL RAC EUROPEAN F3 CHAMPIONSHIP RACES	F3 Int (S/GT/T-Club)	10s.A, 2/6d.C, 10s.S, 10s.P, 2/6d.Pr
30 Oct.	*"EVENING NEWS" INTERNATIONAL MOTOR CYCLE RACE OF THE SOUTH	All Classes	10s.A, 2/6d.C, 10s.S, 10s.P, 2/6d.Pr
16 Oct.	Maidstone & MKMC Dartford Cup Car Races	FL/F3/S/GT/T	10s.A, 2/6d.C, 2/6d.Pr, Rovers
23 Oct.	MG Car Club Sprint	S/GT/T	3/6d.A, CF, Rovers
29 Oct.	Clubmans Motor Cycle Races	All Classes	7/6d.A, CF, 2/6d.Pr, Rovers
30 Oct.	BARC Motor Show Trophy Car Races	FL/F3/S/GT/T	10s.A, 2/6d.C, 2/6d.Pr, Rovers

Sidecar Competitors

No.	Name	c.c.	Machine	Town
1	R. S. Cobb ... Pass.: L. A. Cobb	650	C.M.S.	West Wickham
2	B. Sadler ... Pass.: P. Palmer	650	Sansouci	Cheshunt
3	D. Leigh ... Pass.: J. Jones	650	Dojo	Sanderstead
4	L. A. Butler ... Pass.: L. S. Butler	500	Matchless	Penge
5	R. W. Gollner ... Pass.: R. Martin	650	R.T.G.S.	Denmead
6	T. J. Winfield ... Pass.: C. Hodge	650	Triumph	Enfield
7	B. Ayres ... Pass.: A. Broughall	650	Triumph	Bedfont
8	R. G. Carey ... Pass.: S. R. Brooks	650	Triumph	Battle
9	R. Geer ... Pass.: T. Young	650	Yogi	Seal
10	T. F. Nevill ... Pass.: G. B. Grills	650	Condor	East Barnet
11	F. W. Restrict ... Pass.: J. East	650	Triumph	Knowl Hill
12	R. Gates ... Pass.: R. T. Cleverley	650	B.S.A.	Hayes, Middlesex
14	M. Holloway ... Pass.: D. Palmer	650	Midas	Catford
15	P. J. Knight ... Pass.: P. Bell	650	K.B.S.	Pulborough
16	J. Castle ... Pass.: D. Stewart	650	B.S.A.	Lenham
17	A. Wilson ... Pass.: H. B. Wilson	650	Triumph	Chertsey
18	G. Allington ... Pass.: I. Allington	596	Norton	Weybridge

BRANDS HATCH FIXTURES 1966 (Continued)

6 Nov.	East Surrey M.C. Sprint	S/GT/T	3/6d.A, CF, Rovers
13 Nov.	National Kart Races	1 Sport, all 4s.	7/6d.A, CF, SF, PF
20 Nov.	INTERNATIONAL SCRAMBLE OF THE YEAR	All Classes	10s.A, 2/6d.C, 2/6d.Pr, Rovers
27 Nov.	London Motor Club November Cup Car Races	FL/F3/S/GT/T	10s.A, 2/6d.C, 2/6d.Pr, Rovers
4 Dec.	Surrey Sporting M.C. Sprint	S/GT/T	3/6d.A, CF, Rovers
11 Dec.	Volkswagen O.C. Sprint	S/GT/T	3/6d.A, CF, Rovers
18 Dec.	Lambretta O.C. Economy Run	Scooters	No Charge
26 Dec.	BRSCC Boxing Day Car Races	FL/F3/S/GT/T	10s.A, 2/6d.C, 10s.S, 10s.P, 2/6d.Pr

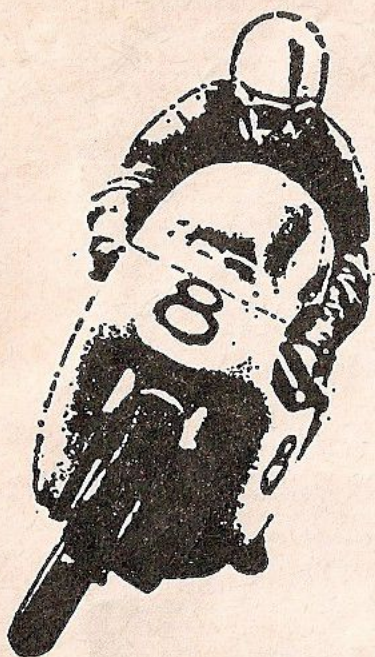
* On the 2.65 Grand Prix Circuit

KEY: A — Adults; C — Children; CF — Children Free; S — Stands; P — Paddock; Pr — Programme;
SF — Stands Free; PF — Programme Free.
Rovers — Inclusive of entry to stands and paddock.

PARKING FREE AT ALL MEETINGS

All the above information is given in good faith at the time of publication

The spectator sees but half the show . . .



... The other half's behind the scenes. MOTOR CYCLING takes you there, with riders' plans and prospects what's happening at the race shops—in fact all the details that make the actual racing possible.

If you enjoy watching the sport now, you can be sure of even more satisfaction if you get in on the inside story—read

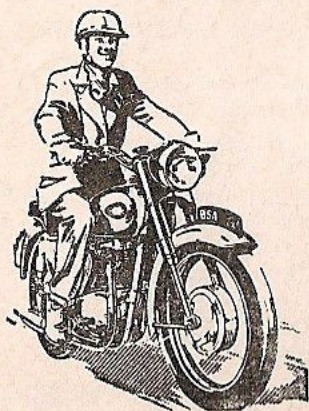
Motor Cycling

every Wednesday

300 NEW & USED MOTOR CYCLES & SCOOTERS

SPARES & ACCESORIES ● H.P. TERMS ● PART EXCHANGE

ALL LEADING MAKES



ENTRANTS AND SPONSORS OF
DEREK MINTER

AREA DISTRIBUTORS FOR HONDA

HALLETS

ST. DUNSTAN'S CANTERBURY 62275

A brief background to the annual Classic the 'NORTH' v 'SOUTH' Scramble

It was in 1946, at the suggestion of the late Charles Markham — then a staffman on 'Motor Cycling', that the Editor, the late Graham Walker, agreed to sponsor and provide a Challenge Trophy for an annual event between representative teams from the 'North' and the 'South'. The South won the first two events in a series that has developed over the years into one of the major British scramble classics.

The contest always has two legs, one staged in each of the 'home' areas, the winners being declared on aggregate points. The points are scored by all finishers on a decreasing scale from the winners 20, 2nd placeman's 19, and so on. Each event has three races, so in effect the winners are the most consistent over the six races — a tough assignment. The size of the teams has varied little over the years — 15 from each area are named for today's event.

Not for the first time is this classic being held here at Brands Hatch — it was last held here in 1953, when the 'home' team won.

The first leg in this year's event was held at the Boltby circuit near Thirsk on August 8th, when the visitors overwhelmed the home side, to romp away with a useful 157 points lead for this second leg. The scores then were 389 to 232.

For this vital second encounter both sides have been strengthened — team managers making every effort to do as well — or better, than at Boltby.

The North, for instance, have shown their resourcefulness, by including 1964/5 500 c.c. World Moto-Cross champion, Midlander, Jeff Smith in their ranks. Chris Horsfield, now happily riding the CZ machines, also augments the visiting side, further strengthened by the inclusion of Arthur Lampkin, 'Big' John Burton and Roy Peplow.

Not content to rest on their laurels, the South team sees local lad Vic Eastwood back in its ranks — and to replace the Rickman brothers, in come Andy Lee and Dave Nicoll, two of the tallest men 'in the saddle'. In, too, comes, Jerry Scott to help Johnny Giles (second twice at Boltby) and three times winner Bryan Goss, whose maximum helped to build up the huge lead.

Conditions will greatly affect the prospects — and if it's fine there is bound to be some really exciting, close, hard fought dices for those major point scoring places on the excellent viewing course of just less than a mile in length. This 20th two-leg 'civil war' annual scramble makes a welcome return to Brands Hatch.

PETER ARNOLD.

RACES ONE & SIX

JUNIORS MOTOCROSS

175 c.c. up to 1000 c.c.

EVENT 1

2 LEGS OF 4 LAPS

No.	Name	No.	Name	No.	Name
31	A. Bastick	47	H. M. Trinder	63	J. Jacombs
32	W. Holdaway	48	N. Capstick	64	T. Wales
33	W. V. Horton	49	D. R. Edwards	65	D. J. Keech
34	A. M. Chant	50	A. Taylor	66	D. J. Fox
35	R. G. Wilsher	51	B. E. Sturdey	67	D. Hitchcock
36	I. V. Browne	52	D. Hughes	68	C. Mullan
37	W. K. Bryant	53	A. J. Smith	69	P. H. Goldsmith
38	D. J. Sturdey	54	B. W. Slark	70	D. Windsor
39	W. Kempself	55	R. Gaylard		
40	M. J. Roberts	56	R. Bullen		Reserves :
41	R. E. Arthur	57	K. J. Thorpe	71	C. Taylor
42	R. Atkinson	58	D. G. Hiscock	72	A. J. Clarke
43	P. Barnett	59	E. T. Knighton	73	B. Colson
44	H. V. Browne	60	J. R. Holder	74	P. Clayton
45	A. C. Warren	61	T. Sudds	75	B. Skinner
46	T. Leach	62	C. Clark		

MOTO CROSS SCORING : Riders compete in both Races. Points are awarded according to placing. The Overall Winner is Rider with highest aggregate of Points over the two Races.

	1st 10 pts	2nd 9 pts	3rd 8 pts	4th 7 pts	5th 6 pts	6th 5 pts	7th 4 pts	8th 3 pts	9th 2 pts	10th 1 pt
1st LEG										
RACE ONE										
2nd LEG										
RACE SIX										

OVERALL POSITION 1st..... 2nd..... 3rd..... 4th..... 5th..... 6th.....

RACES THREE & SEVEN

EXPERTS MOTOCROSS

175 c.c. up to 1000 c.c.

EVENT 2

2 LEGS OF 8 LAPS

No	Name	No.	Name	No.	Name
76	F. C. Baker	85	R. East	94	G. King
77	M. Dearn	86	G. Gower	95	J. Clayton
78	L. Neve	87	W. Cawte	96	B. Nutley
79	E. T. Deeley	88	R. Wickens	97	A. J. Hogg
80	G. Everett	89	T. Leadbitter	98	C. G. Dixon
81	D. Burns	90	J. Harrison	99	R. H. Farrow
82	G. Beamish	91	G. Adsett	100	T. Cox
83	P. G. Hole	92	D. Smith		
84	J. Pringle	93	M. Peach		

MOTO CROSS SCORING : Riders compete in both Races. Points are awarded according to placing. The Overall Winner is Rider with highest aggregate of Points over the two Races.

	1st	2nd	3rd	4th	5th	6th	7th	8th	9th	10th
	10 pts	9 pts	8 pts	7 pts	6 pts	5 pts	4 pts	3 pts	2 pts	1 pt
1st LEG										
RACE THREE										
2nd LEG										
RACE SEVEN										

OVERALL POSITION

1st..... 2nd..... 3rd..... 4th..... 5th..... 6th.....

SHARP & WOOLLETT

MOTOR CYCLES

SALES

SERVICE

REPAIRS

INSURANCE

SPARES

ACCESSORIES

H.P. TERMS

B.S.A

JAMES

MATCHLESS

RALEIGH

ENTRANTS OF

CYRIL DAVEY

TONY BAITUP

HONDA

TRIUMPH

VESPA

MOBYLETTE

KERRY

148 ST. JOHNS HILL, SEVENOAKS, KENT.

Tel. 51784

HONDA?

CHISHOLMS

— OF COURSE!

**23, LOWER STONE STREET,
MAIDSTONE, KENT.**

Tel: 54440

Come to . . .
COMERFORD'S

FOR CAR AND MOTORCYCLE BARGAINS

**COMERFORDS LTD,
THAMES DITTON,
SURREY.**

ESTABLISHED 40 years

TELEPHONE
EMBerbrook 5531
10 LINES.

E. S. LONGSTAFF LTD.

for NEW and USED

CARS :: MOTORCYCLES :: SCOOTERS

HONDA & TOYOTA DISTRIBUTORS

68 NEW ROAD,
EDMONTON,
LONDON, N.9.

Edmonton
6378/9

Buckhurst
6369/6757

108 HIGH ROAD,
SOUTH WOODFORD,
LONDON, E.18.

RACES FOUR & NINE

THREEWHEELER RACE

up to to 1200 c.c. Moto Cross

EVENT 3

2 LEGS OF 6 LAPS

No.	Name	No.	Name	No.	Name
1	R. S. Cobb Pass.: L. A. Cobb	7	B. Ayres Pass.: A. Broughall	Reserves :	
2	B. Sadler Pass.: P. Palmer	8	R. G. Carey Pass.: S. R. Brooks	14	M. Holloway Pass.: D. Palmer
3	D. Leigh Pass.: J. Jones	9	R. Geer Pass.: T. Young	15	P. J. Knight Pass.: P. Bell
4	L. A. Butler Pass.: L. S. Butler	10	T. F. Nevill Pass.: G. B. Grills	16	J. Castle Pass.: D. Stewart
5	R. W. Gollner Pass.: R. Martin	11	F. W. Restrict Pass.: J. East	17	A. Wilson Pass.: H. B. Wilson
6	T. J. Winfield Pass.: C. Hodge	12	R. Gates Pass.: R. T. Cleverley	18	G. Allington Pass.: I. Allington

MOTO CROSS SCORING : Riders compete in both Races. Points are awarded according to placing. The Overall Winner is Rider with highest aggregate of Points over the two Races.

1st	2nd	3rd	4th	5th	6th	7th	8th	9th	10th
10 pts	9 pts	8 pts	7 pts	6 pts	5 pts	4 pts	3 pts	2 pts	1 pt

1st LEG

RACE FOUR

2nd LEG

RACE NINE

OVERALL POSITION 1st..... 2nd..... 3rd..... 4th..... 5th..... 6th.....