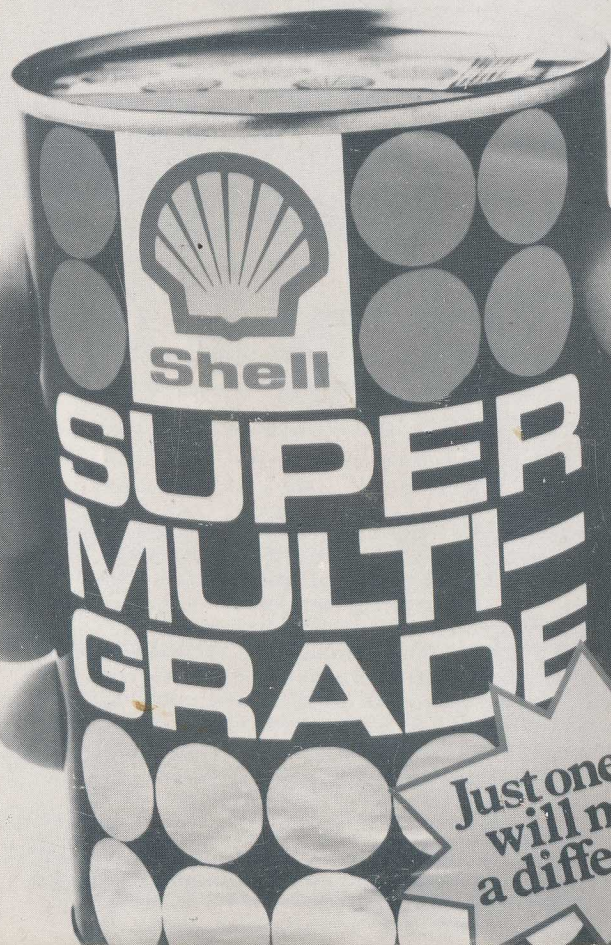


'Muscle'



Just one pint
will make
a difference



1974 Programme

BRANDS HATCH
MALLORY PARK
OULTON PARK
SNETTERTON



**When the prize is
an international market you don't
take a chance on your oil**



The Ford Rally Team uses only Shell Super Multigrade

**Only Shell Super Multigrade has
the unique 'muscle-molecule.' That's why
it always stays 20w/50 no matter what
make your car or how hard you drive it.**

One of the most dynamic motoring success stories in the last 20 years, the Ford Rally Team Escorts, have helped to give the Ford Motor Company an unbeatable record in the international market. "We apply the very latest evaluation techniques to every supplier item," says team manager Peter Ashcroft. "Shell Super Multigrade is utterly dependable. It always stays in grade, providing our engines with top protection." His rally experience confirmed Shell's own exhaustive testing.



1974 PROGRAMME

BRANDS HATCH MALLORY PARK OULTON PARK SNETTERTON

KEY

Types: Events listed in block capitals are fully international or other important meetings.

Events in normal black type are championship meetings involving prize money and are planned as public entertainments.

Events in lightweight type are clubman's meetings intended primarily for the benefit of competitors. Supporters are welcomed, at the published charges, on the understanding that these are not professional promotions.

Races:

F1 – Formula 1	Hist. – Historic Racing Cars	GT – Sports GT
F5000 – Formula 5000	MS – Modified Sports	S – Sports Cars
FA – Formula Atlantic	C – Clubman's Sports	MEX – Mexico Saloons
F3 – Formula 3	SS – Special Saloons	SSF – Single Seater
FF – Formula Ford	PS – Production Saloons	Formula
FL – Formule Libre	GP.I – International	V – F. Vee
	Production Saloons	SV – F. Super Vee

At car meetings when an abbreviation is followed by an asterisk (*) this indicates that this particular event is a championship round. Final confirmation on motor cycling championships is not available at the time of going to press.

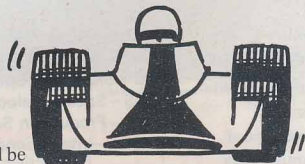
Charges:

A – Adults	OS – Open Seats or Stands	SP – Stands and Paddock combined
C – Children	SF – Stands Free	Rovers – Stands and Paddock Free
CF – Children Free	P – Paddock	
S – Covered Stands		

ALL PARKING FREE — ANIMALS NOT ADMITTED

**ALL INFORMATION HEREIN IS PUBLISHED IN GOOD FAITH AT
THE START OF THE SEASON, AND THE PROMOTERS RESERVE
THE RIGHT WITHOUT NOTICE TO MAKE ANY ALTERATION TO
THE PROGRAMME, PRICES OR OTHER DETAILS**

Betting at Brands.



Ladbroke's will be offering on-course betting facilities at Brands Hatch for the JOHN PLAYER GRAND PRIX.

To enjoy these facilities to the full, visit our marquee near the main Grandstand or our kiosks in the paddock and at the South Bank.

Credit accounts can be opened on-course or by telephoning 01-863 5555.

Ladbroke's

BRANDS HATCH

- HOW TO GET THERE
- WHERE TO STAY
- WHERE TO EAT
- WHERE TO DRINK

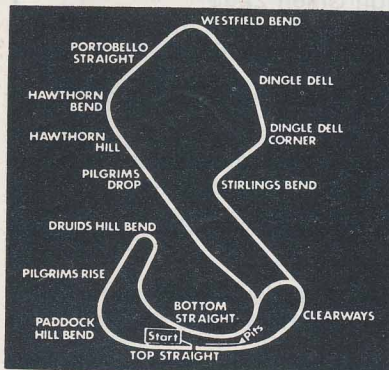
Brands Hatch is to enjoy one of its greatest seasons in the circuit's long history when, in 1974, it plays host to both of Great Britain's world championship car races—the John Player Grand Prix in July and the newly named British Airways 1000 Kilometres sports car race (successor to the famous BOAC 1000) in September—and a host of other major events like the traditional European season Formula 1 opener, the Race of Champions, Rothmans European Formula 5000 events, Ford Sport Day, Radio Luxembourg Day, etc. and, in the motor cycling field, the John Player Transatlantic Trophy races, the Evening News Hutchinson 100 and the new Powerbikes International.

Brands Hatch is the world's busiest race track with its major events on the 2.65 mile Grand Prix Circuit and innumerable races at all levels on the 1.24 mile Short Circuit, so that in the year there are some 60 different race meetings, not to mention the special practice days for the biggest ones and the regular practice days on Wednesdays and Saturdays of most weeks and all the other activities for which the circuit is renowned.

Among the attractions of Brands Hatch, which has helped to make it the home of British motor racing, is the unrivalled spectator viewing which brings so much extra enjoyment to the enthusiasts.

Enquiries:

Telephone: Ash Green (STD 0474) 872331.



1.24 and 2.65 miles.

On the A.20, 20 miles S.E. of London between Swanley and Wrotham.

Brands Hatch Circuit Limited,
Fawkham,
Nr. Dartford,
Kent DA3 8NG
Tel. Ash Green 872331
(STD 0474)
Telex: 96172

AFTER THE MEETING
Travel 5 miles down the A20 towards
Dover to Wrotham

PILGRIMS REST

Borough Green 2757
at the Wrotham Roundabout on the A20

Grills available all day, breakfasts, luncheon
cream teas and dinners

Fully licensed for late dinners

Ballroom for 80 persons and private room for
45 persons available for private functions

Discotheques every Saturday

MOAT HOTEL

Borough Green 2263
on the A20 between the Wrotham roundabout
and the M20 intersection

Finest a la carte and table d'hôte cuisine daily

14th Cent. Tythe Barn Ballroom available for all
functions up to 180 persons

Dinner Dances every Saturday

Discotheques every Tuesday, Wednesday,
Thursday, free entertainment every Sunday

HOW TO GET THERE . . .

BY CAR. Brands Hatch is situated beside the A.20 London-Maidstone main road, 20 miles south of London between Swanley and Wrotham.

BY BUS. Greenline route 719 (London-Wrotham) stops right outside the main gate of the circuit. The nearest main alighting point for other bus routes is Swanley Bus Station. For local bus service enquiries, telephone: Swanley 2075. A special bus service from Swanley Railway Station to and from the circuit is run on race days (other than Clubman's meetings).

BY TRAIN. From Swanley Railway Station there are regular services north-west into London's Victoria and Holborn Viaduct stations, and south-east to the Medway towns, Sevenoaks and the Kent Coast. For local train service enquiries, telephone: West Malling 842842.

BY TAXI. The following local firms are available:

Kentax.	(Orpington 26666).
Swanley Taxi Service.	(Swanley 2009).
Swantax Car Hire	(Swanley 3958).
West Kingsdown Taxi Service.	(West Kingsdown 2736).

BY AIR. The nearest airfield for landing private planes is Biggin Hill.
(Telephone: Biggin Hill 4477).

Alternatively, Rochester airfield is also in the vicinity.

For landing facilities contact the Rochester Flying Club. (Telephone: Medway 61378).

The nearest airport for scheduled services is London Gatwick, from which numerous internal and international airlines operate. There is a connecting train service running Gatwick-Victoria-Swanley. For general passenger flight enquiries, telephone: 01-283 8711.

GARAGE FACILITIES. A petrol station is open on race days at the circuit (near the clubhouse). The nearest garage open on Sundays for petrol and repairs is The Dell Service Station, West Kingsdown (Telephone: West Kingsdown 2858).



**Outstanding Performances
at Brands, Oulton, Mallory, Snetterton
and daily on roads throughout Britain.**

AVON

The entire ShellSport Mexico team is fitted with Avon Wide Safety tyres

WHERE TO EAT AND DRINK . . .

RESTAURANTS. Several first-class eating places are within easy reach of the circuit by car (approximate mileages indicated):

The Longfield Steak House.	Longfield 5434 (3m).
The Bull, Wrotham.	Borough Green 2021 (5m).
The Moat, Wrotham.	Borough Green 2263 (5m).
The Bull Hotel, Swanley.	Swanley 2963 (8m).
Royal Victoria & Bull, Dartford.	Dartford 23104 (10m).
Clarendon Royal, Gravesend.	Gravesend 63151 (10m).
Douces Manor, West Malling.	West Malling (84) 3955 (10m).
The Hunting Lodge, Larkfield.	West Malling (84) 3306 (12m).
The Tiger's Head, Chislehurst.	01-467 3070 (14m).
Al-Fiasco Due, Maidstone.	Maidstone 63255 (16m).

SNACK MEALS. There are a number of delightful pubs in the vicinity where snack meals are served during licensing hours (approximate mileages indicated):

The Rising Sun, Fawkham.	(1m).
The Gamecock, West Kingsdown.	(2m).
The Portobello Inn, West Kingsdown.	(2m).
The Farningham Hotel, Farningham.	(3m).
The Lion, Farningham.	(3m).
The Greyhound, Sutton-at-Hone.	(4m).
The Horse and Groom, West Kingsdown.	(5m).
The Pilgrim's Rest, Wrotham.	(5m).
The Ship, Southfleet.	(5m).
The Chequers, Ightham.	(7m).
The Cricketers, Meopham.	(8m).
The Europa Lodge Tollgate, Gravesend.	(10m).

WHERE TO STAY . . .

HOTELS. For those who require overnight accommodation, the following hotels are within easy driving distance of the circuit (approximate mileages indicated):

The Portobello Inn, West Kingsdown.	West Kingsdown 2238 (2m).
The Moat, Wrotham.	Borough Green 2263 (5m).
Bromley Court Hotel, Bromley.	01-460 0055 (10m).
Europa Lodge Tollgate, Gravesend.	Gravesend 2768 (10m).
Royal Victoria & Bull, Dartford.	Dartford 23104 (10m).
Douces Manor, West Malling.	West Malling (84) 3955 (10m).
Laughing Water Motor Inn.	Shorne 3333 (12m).
The Hunting Lodge, Larkfield.	West Malling (84) 3306 (12m).
Bligh's Hotel, Sevenoaks.	Sevenoaks 54092 (14m).
Veglios Motel, Maidstone.	Maidstone 55459 (16m).
Europa Lodge, N. Stifford, Nr. Grays.	Grays Thurrock 71451 (18m).
Great Danes, Nr. Maidstone.	Hollingbourne 381 (20m).




Rothmans

The best tobacco
money can buy

...when you know
what you're doing

EVERY PACKET CARRIES A GOVERNMENT HEALTH WARNING



1974 SIMONIZ SPECIAL SALOON CAR CHAMPIONSHIP SIMONIZ GTWAX

3 March	Brands Hatch
9 March	Oulton Park
24 March	Snetterton
15 April	Mallory Park
5 May	Brands Hatch
19 May	Brands Hatch
27 May	Oulton Park
9 June	Silverstone
16 June	Mondello Park
23 June	Mallory Park
30 June	Brands Hatch
27 July	Oulton Park
28 July	Mallory Park
11 August	Mallory Park
26 August	Snetterton
8 September	Silverstone
22 September	Thruxton
29 September	Mallory Park
13 October	Brands Hatch
26 October	Oulton Park

CAMPING AND CARAVANNING. Enquiries for information concerning local sites should be made to the Tourist Information Centre of the South East England Tourist Board at Tonbridge Wells (Monday to Friday, 9–5.30, Cheviot House, 4-6 Monson Road, Tonbridge Wells, Kent. Tel: Tonbridge Wells 33066) or weekdays and weekends at Dover 202815, Folkstone 58594 or Ramsgate (Thanet 57115). These are regional tourist offices covering Kent, Surrey and Sussex.

AT THE CIRCUIT. The clubhouse is open (seven days a week) for snacks and light refreshments. On race days there are nine cafeterias (including the clubhouse) open at various points on the circuit, and liquid refreshment is on sale at the Motor Bar in the Paddock area, the main grandstand and at most catering points around the circuit.

The Brands Hatch Club Bar, for members and their guests, is open at lunchtime every day except Monday (Tuesday–Saturday: 10.30 a.m.–2.30 p.m., Sunday: 12 noon–2 p.m.). In the evening it is open on Wednesday and Friday (6 p.m.–10.30 p.m.) Sunday (6 p.m.–9 p.m.).

GENERAL INFORMATION . . .

Practice Facilities: General practice takes place most Saturdays (1 p.m.–5.30 p.m.), and the first Wednesday in each month (9 a.m.–5.30 p.m.) with half-hourly sessions for cars, motor cycles and sidecars (cars and sidecars £1 per half hour, motor cycles 70p per half hour). On all other Wednesdays half-day sessions apply—cars 9 a.m. to 12.30 p.m. (£6 plus £1 for each additional driver)—solo motor cycles—1.30 p.m. to 5.30 p.m. (£4.00 plus £1 for each additional rider). V.A.T. extra.

Conditions. Drivers must bring a current competitions licence and crash helmet. Motor cyclists should wear leathers or a Barbour suit, crash helmet, goggles and gloves and have a current driving licence. Drivers of open cars also need either goggles or a visor, and all headlamps must be taped.

TAKING YOUR CAR ABROAD?

*Book through Brands Hatch for friendly
Townsend-Thoresen services
from Dover and Southampton*

**Ring Ash Green 872331 or write to:
Ferry Bookings, Brands Hatch Circuit Ltd.,
Fawkham, Nr. Dartford, Kent, DA3 8NG**

JPS Drivers Results.

	Fittipaldi	Peterson
Argentine Grand Prix	First	
Brazilian Grand Prix	First	
South African Grand Prix	Third	
GKN/D Express International		Second
Spanish Grand Prix	First	
Belgian Grand Prix	Third	
Monaco Grand Prix	Second	Third
Swedish Grand Prix		Second
French Grand Prix		First
John Player Grand Prix		Second
Austrian Grand Prix		First
Italian Grand Prix	Second	First
Canadian Grand Prix	Second	
American Grand Prix		First

**All on ordinary Texaco petrol
and Havoline oil.**

**There's a
lesson in there
somewhere**



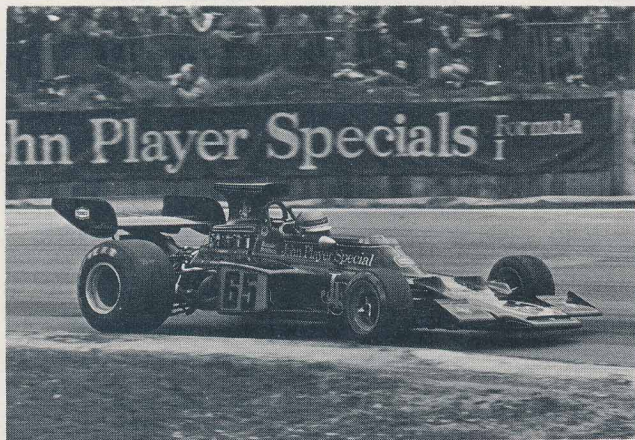
BRANDS HATCH

DATE	EVENT
27 Jan.	Brands Duo Car Races
10 Feb.	Car Sprint Meeting
†17 Feb.	Grand Prix Circuit Practice
†24 Feb.	Grand Prix Circuit Practice
2 March	Clubmans Motor Cycle Races
3 March	Start of Season Championship Car Races
†16 MARCH	ROTHMANS 5000 EUROPEAN CHAMPIONSHIP RACE AND F1 RACE OF CHAMPIONS PRACTICE
†17 MARCH	SIMONIZ-DAILY MAIL RACE OF CHAMPIONS
24 March	Rothmans National Motor Cycle Races
30 March	Clubmans Motor Cycle Races
31 March	Clubmans Car Races
12 APRIL	JOHN PLAYER TRANSATLANTIC TROPHY INTERNATIONAL MOTOR CYCLE RACES
14 April	Stock Cars or Banger and Hot Rod Races
15 APRIL	ROTHMANS 5000 EUROPEAN CHAMPIONSHIP CAR RACES (in association with the EVENING NEWS)
27 April	Clubmans Motor Cycle Races
28 April	MG Clubmans Car Races
4 May	Clubmans Motor Cycle Races
5 MAY	RADIO DJ DAY AND CHAMPIONSHIP CAR RACES

† 2.65 Mile Grand Prix Circuit

ORGANISER	MAIN RACES	CHARGES (INC. VAT)
Rochester MC	S, SS, PS, FF	80p-A, 30p-C, 40p-SP
Circle CC	S, GT, SS	40p-A, CF, Rovers
BRSCC	Cars, M/Cs	30p-A, CF, Rovers
BRSCC	Cars, M/Cs	30p-A, CF, Rovers
Brands RC	All Classes	50p-A, 20p-C, Rovers
BARC	F3*, PS*, SS*, FF*	80p-A, 30p-C, 50p-SP
BRSCC	F5000*, F1, FA	£1.00-A, 30p-C, £1.00-P, SF
BRSCC	F1, F5000, FA*, Gp1*, FF*	£2.30-A, 50p-C, £3.00-S, £1.50-OS, £2.00-P
Brands RC	All Classes	80p-A, 30p-C, 50p-S, 50p-P
BMCRC	All Classes	50p-A, 20p-C, Rovers
BRSCC	S, SS*, FF*	70p-A, 30p-C, 40p-SP
BRANDS RC	SUPERBIKES, etc.	£1.00-A, 30p-C, 80p-S, £1-P
Promotasport	Stock Cars or Bangers and Hot Rods	60-A, 25p-C, 30p-S
BRSCC	F5000*, PS*, S*, C*	£1.00-A, 50p-C, 80p-S, 50p-P
Southern 67	All Classes	50p-A, 20p-C, Rovers
MGCC	MGs, S, SS*, FF*	70p-A, 30p-C, 40p-SP
BMCRC	All Classes	50p-A, 20p-C, Rovers
BRSCC	Super Saloons, PS*, SS*, Mex*, FF*, S*	£1.00-A, 30p-C, £1.00-S, 50p-P

SIMONIZ - DAILY MAIL
**RACE of
CHAMPIONS**



BRANDS HATCH
SUNDAY MARCH 17
FIRST EUROPEAN
FORMULA ONE RACE OF 1974

**Brands Hatch Fans:
Save £3.70 on
a double room at
The Great Danes Hotel.**

Have a weekend at The Great Danes Hotel and we'll offer you a double room for the price of a single – £6.10p per night. Weekend rates for single rooms are available on request.

The Great Danes is just at the southern end of the A20(M), so near Brands we've concentrated our big offer to motor racing regulars.

Set in the heart of the beautiful Kent countryside, we offer you comfort, luxury, relaxation, indoor swimming, ample free parking, even a launching pad for your helicopter – but primarily, excellent food.

The Castle Grill is open from 3.00 pm until 11.30 pm.

This offer is available for any weekend during the '74 season except the six weekends when the International race meetings are on at

Brands Hatch. Interested?

Make your reservation now.



THE GREAT DANES HOTEL
Ashford Road (A20) Hollingbourne
Near Maidstone, Kent. ME17 1RE
Tel: 0627 80381

Rank  Hotels

VAT to be added.

BRANDS HATCH

DATE	EVENT
11 May	Clubmans Motor Cycle Races
12 May	Festival of Speed
19 May	Championship Car Races
25 May	Clubmans Motor Cycle Races
26 MAY	FORDSPORT DAY AND CAR RACES
†27 MAY	RADIO LUXEMBOURG "KING OF BRANDS" INTERNATIONAL MOTOR CYCLE RACES
1 June	Clubmans Motor Cycle Races
2 June	BMW Motor Sport Day
9 June	Oxfam Trophy Clubmans Car Races
15 June	Clubmans Motor Cycle Races
16 JUNE	EVENING NEWS METROPOLITAN POLICE CAR RACES
23 June	Stock Cars or Bangers and Hot Rod Races
29 June	Clubmans Motor Cycle Races
30 JUNE	RADIO LUXEMBOURG POP-STAR SALOON CAR RACES
7 July	National Motor Cycle Races

† 2.65 Mile Grand Prix Circuit

ORGANISER	MAIN RACES	CHARGES (INC. VAT)
Brands RC	All Classes	50p-A, 20p-C, Rovers
Promotasport/ Rochester MC	FF, SS, Karts, Stock Cars, Bangers, Hot Rods	70p-A, 30p-C, 30p-S, 30p-P
BARC	F3*, PS*, SS*, FF*	£1.00-A, 30p-C, £1.00-S, 50p-P
BMCRC	All Classes	50p-A, 20p-C, Rovers
BRSCC	F3*, SS, Mex*, FF*	£1.00-A, 30p-C, 80p-S, 50p-P, Ford Cars and Drivers Free
BRANDS RC	ALL CLASSES	£1.00-A, 30p-C, £1.00 and 50p-S, 50p-P
Southern 67	All Classes	50p-A, 20p-C, Rovers
WECC	FL, S, SS*, BMWs, FF*	£1-A, 30p-C, 50p-P 50p-S
London CC	S, SS*, FF*	80p-A, 30p-C, 50p-SP
BMCRC	All Classes	50p-A, 20p-C, Rovers
Rochester MC	F3, PS*, SS*, C*, FF*	£1.00-A, 30p-C, 50p-SP
Promotasport	Stock Cars or Bangers and Hot Rods	60-pA, 25p-C, 30p-S
Southern 67	All Classes	50p-A, 20p-C, Rovers
SEVENOAKS DMC	SS*, PS, FF*	£1.00-A, 30p-C, £1.00-S, 50p-P
Brands RC	All Classes	80p-A, 30p-C, 50p-S, 50p-P

THE INN ON THE LAKE

Set in twelve acres of Lakes and Woodland

We specialise in

BANQUETING

WEDDING RECEPTIONS

CONFERENCES

MASONICS

PRIVATE PARTIES

80 fully centrally heated bedrooms with private bathrooms

Special weekend rates available on request

LAUGHING WATER MOTOR INN

SHORNE, KENT

Telephone STD 047 482 3333

WINNERS

...choose Kodak film
from start to finish!



**And visit the Kodak camera
gallery at Druids Bend**

HONDA

Keep switched on- beat the power cuts this year

The most competitive range of portable generators from 300 watts to 4000 watts AC-DC. Ideal plant for light and power source for farms, caravans, boats, light industry and complete homes. Quiet, safe and mobile with every economy in running costs

Details and demonstrations anywhere in Kent
Also suppliers of power tillers, portable pumps, sprayers and outboard motors. Also stockist of wolf power tools



Power- marine

Main Road, West Kingsdown, Sevenoaks, Kent
Telephone: West Kingsdown 3127 & 3181 (24-hour answering service)

BRANDS HATCH

DATE	EVENT
†18/19 JULY	JOHN PLAYER GRAND PRIX OFFICIAL PRACTICE
†20 JULY	JOHN PLAYER GRAND PRIX (in association with the EVENING NEWS)
21 July	Stock Cars or Banger and Hot Rod Races
28 July	Gandy Car Race Day
3 Aug.	INTERNATIONAL HUTCHINSON 100 PRACTICE
4 AUG.	INTERNATIONAL HUTCHINSON 100 MOTOR CYCLE RACES (in association with the EVENING NEWS)
10 Aug.	Clubmans Motor Cycle Races
11 AUG.	208 POP-STAR AND CHAMPIONSHIP CAR RACES
17 Aug.	Clubmans Motor Cycle Races
18 Aug.	Championship Car Races
25 Aug.	Stock Cars or Banger and Hot Rod Races
26 AUG.	ROTHMANS 5000 EUROPEAN CHAMPIONSHIP CAR RACES (in association with the EVENING NEWS)
1 Sept.	Clubmans Motor Cycle Races
8 SEPT	DEE JAY CAR RACES

ORGANISER	MAIN RACES	CHARGES (INC. VAT)
RAC	F1, FA, Gp1	£1.00-A, 30p-C, £1.00-P, SF
RAC	F1*, FA*, Gp1*, Hist*, PS	£2.50-A, £1.00-C, £5.00-S, £2.00 and £3.00-OS, £3.00-P
Promotasport	Stock Cars or Bangers and Hot Rods	60p-A, 25p-C, 30p-S
Rochester MC	S, SS*, FF*	70p-A, 30p-C, 40p-SP
BMCRC	ALL CLASSES	30p-A, 20p-C, Rovers
BMCRC	ALL CLASSES	£1.00-A, 30p-C, 80p-S, 80p-P
Brands RC	All Classes	50p-A, 20p-C, Rovers
BARC	FL, F3*, PS*, SS, FF*	£1.00-A, 30p-C, £1.00-S, 50p-P
Southern 67	All Classes	50p-A, 20p-C, Rovers
BRSCC	FL, PS, SS*, FF*	80p-A, 30p-C, 40p-SP
Promotasport	Stock Cars or Bangers and Hot Rods	60p-A, 25p-C, 30p-S
BRSCC	F5000*, Gp1*, SS, FF*	£1.00-A, 50p-C, £1.00-S, 50p-P
Brands RC	All Classes	50p-A, 20p-C, Rovers
Sutton & Cheam	S, SS*, FF*	£1.00-A, 30p-C, £1.00-S, 50p-P



Lex

make it your next pit stop!

Because Lex are geared up to give you the kind of service that racing enthusiasts appreciate. New or used cars – high performance servicing – accessories and parts to give your motoring real racing style.

Lex Motor Company

Lex Motor Co. (Bexleyheath) Ltd.
78 Broadway, Bexleyheath, Kent. Tel: 01-303 6363/3804/5



Rover Triumph

Lex Motor Co. (Chelmsford) Ltd.
Victoria Rd. South, Chelmsford, Essex. Tel: 0245 53404/62363



Jaguar M G Morris

Members of the Lex Service Group.

Go Abroad!



£1 off the following prices to Speed International members.

£29.00

SPANISH GP

One day flight

28 April

£29.00

MONACO GP

Four day Hovercraft/Coach

24-27 May

£29.00

MONACO GP

One day flight

26 May

£19.00

LE MANS

Rail/Boat/Coach

14-17 June

£29.00

GERMAN GP

Hovercraft/Coach

2-5 August

RACE TICKETS included

Full details from:

Overseas Excursions Department

BRANDS HATCH CIRCUIT LTD.

Fawkham, Kent DA3 8NG

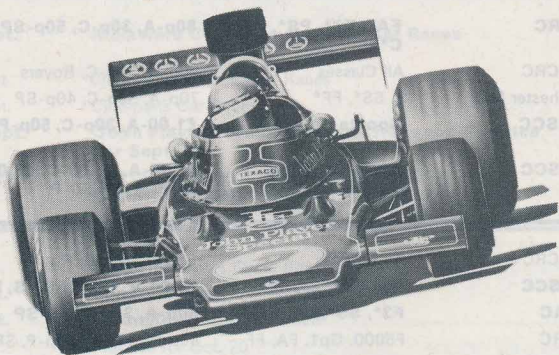
Telephone: Ash Green 872331

BRANDS HATCH

DATE	EVENT
15 Sept.	Melaware Cup Championship Car Races
21 Sept.	Clubmans Motor Cycle Races
22 Sept.	Clubmans Car Races
†28 Sept.	John Player Formula Atlantic Race and Practice for Sept. 29
†29 SEPT.	BRITISH AIRWAYS 1000 KM WORLD CHAMPIONSHIP SPORTS CAR RACES
5 Oct.	Clubmans Motor Cycle Races
6 Oct.	Championship Car Races
13 Oct.	Championship Car Races
19 Oct.	Practice for Oct. 20
†20 OCT.	ROTHMANS MOTOR SHOW 200 F5000 INTERNATIONAL CAR RACES
26 Oct.	Evening News Powerbike International Practice
†27 OCT.	EVENING NEWS POWERBIKE INTERNATIONAL
3 Nov.	Championship Finals Car Races
10 Nov.	Clubmans Car Races
17 Nov.	Clubmans Car Races
24 Nov.	Clubmans Car Races
1 Dec.	Clubmans Car Races
8 Dec.	Clubmans Car Races
26 DEC.	BOXING DAY CAR RACES
28 Dec.	Banger and Hot Rod Races
29 Dec.	Motor Cycle Races

ORGANISER	MAIN RACES	CHARGES (INC. VAT)
BARC	FA*, F3*, PS*, SS*, C*	80p-A, 30p-C, 50p-SP
BMCRC	All Classes	50p-A, 20p-C, Rovers
Rochester MC	S, SS*, FF*	70p-A, 30p-C, 40p-SP
BRSCC	Sports Cars, FA	£1.00-A, 30p-C, 50p-P, SF
BRSCC	SPORTS CARS (Gp4 & 5)	£2.30-A, £1.00-C, £2.00 to £3.00-S, £1.50-P
BMCRC	All Classes	50p-A, 20p-C, Rovers
BRSCC	PS, SS*, S*, FF*	£1.00-A, CF, £1.00-S, 50p-P
TEAC	F3*, SS*, C*, FF*	80p-A, 30p-C, 50-SP
BARC	F5000, Gp1, FA, FF	50p-A, 30p-C, 50p-P, SF
BARC	F5000*, Gp1*, FA*, FF*	£1.50-A, 50p-C, £1.00-S, £1.00-P
Brands RC	All Classes	70p-A, 30p-C, Rovers
BRANDS RC	SUPERBIKES, etc.	£1.00-A, 30p-C, 80p-S, 80p-P
BRSCC	FA*, PS*, SS*, FF*	80p-A, 30p-C, 50p-SP
TEAC	SSF, S, SS	70p-A, 30p-C, 40p-SP
Sevenoaks DMC	SSF, S, SS	70p-A, 30p-C, 40p-SP
Romford ECC	SSF, S, SS	70p-A, 30p-C, 40p-SP
Rochester MC	SSF, S, SS	70p-A, 30p-C, 40p-SP
MGCC	SSF, S, SS	70p-A, 30p-C, 40p-SP
BRSCC	FL, FA, FF, PS, SS	£1.00-A, CF, 80p-S, 50p-P
Promotasport	Bangers and Hot Rods	60p-A, 25p-C, 30p-S
Brands RC	All Classes	80p-A, CF, 50p-S, 50p-P

**40,000 miles,
one careful owner,
used special occasions.**



The other John Player Special.
Created and perfected to be the
best Virginia cigarette in the world.
30p* for 20

*Recommended price.



JPSM/120a

**EVERY PACKET CARRIES
A GOVERNMENT HEALTH WARNING**

MALLORY PARK

- HOW TO GET THERE
- WHERE TO STAY
- WHERE TO EAT
- WHERE TO DRINK

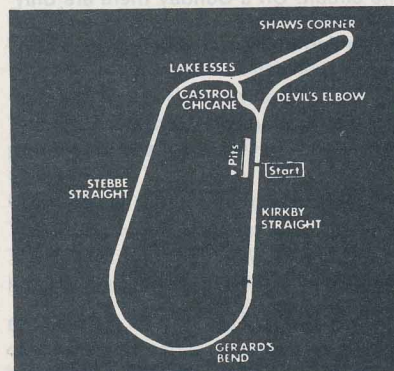
Mallory Park—"the friendly circuit"—is just about as near as you can get to the centre of England, and the neat little track, with its attractive lake-side setting, can certainly claim to be the Midlands centre for motor sporting activities.

Despite a relatively short length, the 1.35 miles main circuit provides some excitingly fast motor and motor cycle racing, with the great advantage that more than three-quarters of the course can be seen by the majority of spectators.

The remaining quarter, a delightful tree-lined incline up to the Shaw's Corner hairpin and back down through Devil's Elbow to the start-line, has its own special attractions and draws a regular band of devotees. There is also the one-mile club circuit, which like the main course is lapped at well over 100 m.p.h. by the fastest drivers, and for this the entire track is in view of most spectators.

Mallory Park is the venue for the annual international motor cycle Race of the Year, Britain's premier meeting for two-wheeler fans, which attracts the largest annual attendance of any motor sport meeting in the country.

Mallory Park fans are carrying on a tradition of attending sporting events which began many years ago when the venue was a pony track. But the circuit's historical associations go back much further to Anglo-Saxon times, when it was part of a fortified area. Kirkby Mallory has an interest-



1.00 and 1.35 miles.

Off the A.47 and A.447
between Hinckley and
Leicester. Easy reach of all
parts of the Midlands and
only 9 miles from the M.1.

**Mallory Park
Circuit Limited,
Kirkby Mallory,
Leicester LE9 7QE.
Tel: Earl Shilton 42931-2**

ing association with Lord Byron, for the tree under which he wrote much of his poetry still stands near the clubhouse—built on the site of the old Manor House.

Mallory Park also has an Angling Society which operates on the large lake inside the circuit.

Enquiries:

Telephone: Earl Shilton 42931-2.

HOW TO GET THERE . . .

BY CAR. Situated in the heart of the beautiful Leicestershire countryside between Hinckley and Leicester, Mallory Park lies north of the A.5 trunk road and the Midlands link (M.6) joining M1 to the East and the main part of the M.6 to the West.

Directly south of the circuit is the A.47, the major traffic route from Leicester to Hinckley—the nearest town to the Kirkby Mallory estate in which the track is sited.

Hinckley is to the south-west of Mallory Park, and running directly north from the town is the A.447 to Derby.

From whichever direction you come, signposts will guide you through the lanes to Mallory Park.

BY BUS. The 688 route runs from Hinckley (bus station) to Kirkby Mallory via Earl Shilton—which is the nearest alighting point on the doorstep of the circuit. On a Sunday there are only two services on route 688. From Leicester (Newarke Street bus station) the 658 service runs to Earl Shilton, regularly from 8 a.m.

BY TRAIN. The nearest railway stations are Leicester (London Road) and Hinckley. For local train services, telephone: Leicester 29811.

BY TAXI. The following local services are available:
Biddle's Garage, Kirkby Mallory. (Earl Shilton (42256).

Godfrey Davis 'Rent a Car', Belgrave Gate, Leicester.
(Leicester 21121).

30 A.B.C. Taxis, 53A Evington Road, Leicester (Leicester 23019).

BY AIR. Private planes can land at Leicester East Aerodrome or at Castle Donnington Airport (near Derby).

To obtain landing permission at Leicester East, telephone Great Glen 2360 and ask for Air Traffic Control (for enquiries contact Leicestershire Aero Club). For landing permission at Castle Donnington, telephone Castle Donnington 621 and ask for the Air Line Director.

The nearest airport for scheduled services is also Castle Donnington, and for flight enquiries the telephone number is the same. British Midland Airways are based there, and Channel Airways operate to the airport. Routes coming to Castle Donnington include Belfast, Dublin, Glasgow, Aberdeen, Edinburgh, Jersey and Guernsey, Leeds, Bradford, Newcastle, Teesside, Luton, Southend and Norwich.

GARAGE FACILITIES. A petrol station is open on race days in the Paddock for competitors and the nearest garage open on Sundays for petrol and repairs is Biddle's at Kirkby Mallory (Telephone: Earl Shilton 42256).

WHERE TO STAY . . .

HOTELS. Within easy reach of the circuit, for those who require accommodation, are the following hotels:

The Grand Hotel, Granby Street, Leicester. Leicester 56222.

Abbey Motor Hotel, Abbey Street, Leicester. Leicester 50666.

Nuneaton Crest Motel, Watling Street, Nuneaton. Nuneaton 5335.

Post House, Braunstone Lane, Leicester. Leicester 896688.

Europa Lodge Motel (on A.47 just off motorway). Kirby Muxloe 4661.

Holiday Inn, Leicester. Leicester 51161.

Steering Wheel Hotel, Hinckley. Leicester 34256.

The cosy atmosphere, and more reasonable prices, of an inn or pub may appeal to some, and limited accommodation is available at:

Union Hotel, The Borough, Hinckley. Hinckley 37293.

The Chase Hotel, Higham Lane, Nuneaton. 0682-323406.

The Star Inn, Stoney Stanton, Leicester. Sapcote 2314.

King William IV, Hollow, Earl Shilton. Earl Shilton 43033.

CAMPING AND CARAVANNING. Facilities are available on the circuit estate, and enquiries should be made at the clubhouse.

WHERE TO EAT AND DRINK . . .

RESTAURANTS. Within short driving distance of the circuit are the following top-class restaurants (approximate mileages indicated):

- Holiday Inn, Leicester. Leicester 51161. (9 m).
Abbey Motor Hotel, Abbey Street, Leicester. Leicester 50666. (9 m).
Grand Hotel, Granby Street, Leicester. Leicester 56222. (9 m).
Nuneaton Crest Motel, Watling Street, Nuneaton. Nuneaton 5335. (5 m).
Post House, Braunstone Lane, Leicester. Leicester 896688. (10 m).
Continental Restaurant, 203 Uppingham Road, Leicester. Leicester 766860. (12 m).
The Chase Hotel, Higham Lane, Nuneaton. 0682-323406.
The Wheatsheaf Inn, Brand Hill, Woodhouse Eaves. Woodhouse Eaves 980582. (7 m).
Annabelle, 11 Cank Street, Leicester. Leicester 27022. (11 m).
The Lady in Grey, Wilne Lane, Shardlow, Derby. Shardlow 331. (20 m).
The Greek Plough, East Goscote, Syston 5617. (16 m).
Ragdale Hall Hotel Ltd., Six Hills. Rotherby 831/2. (9 m).
Berni Steak Bar, Belgrave Gate, Leicester. Leicester 57597. (12 m).
Ye Old Black Horse, Market Square, Market Bosworth. Market Bosworth 290278. (4 m).
La Gioconda, 77 Narborough Road, Leicester. Leicester 29267. (9 m).
The Rothley Court Hotel, Rothley, Nr. Leicester. Rothley 2618. (10 m).
The Hurst Hotel, Quorn. Quorn 2541. (14 m).
The Bell Hotel, Melton Mowbray. Melton Mowbray 2026. (20 m).
Elizabethan Restaurant, Welford, Northants. Welford 311. (15 m).
Midland Hotel, Princess Road, Leicester. Leicester 22097. (9 m).
The Crown, Great Glen. Great Glen 2233. (10 m).
Belmont Hotel, De Montfort Street, Leicester. Leicester 24177/8. (9 m).
Europa Lodge Motel (on A.47 just off motorway). Kirby Muxloe 4661. (6 m).
SNACK MEALS. Other good eating places in the district on a cheaper budget are:
The Bulls Head, Leicester Forest West, Desford. Desford 2252. (2½ m).
Kong Nam Restaurant, Rugby Road, Hinckley. Hinckley 32558. (4½ m).

AT THE CIRCUIT. Refreshment facilities are available on race days only, when hot meals are served in the clubhouse, and lighter snacks can be bought at the various stands around the circuit.

The Mallory Park Clubhouse is open for members on Tuesdays, Thursdays and Saturdays from 7.0 p.m.–10.30 p.m., and on Sundays (race days) 12 noon to 2 p.m. and 4 p.m.–10.30 p.m. (latest). Details of membership are available on request.

GENERAL INFORMATION . . .

Practice facilities. General practice sessions at the circuit normally take place on one Saturday in each month (telephone the circuit manager for dates). The cost is as follows:

Cars. Half day £4. Whole day £7.

M/c. Half day £2.50. Whole day £4.

Valid driving licences and crash helmets are necessary, and for motor cyclists and three-wheelers—all riders **MUST** wear ACU approved crash helmets and racing leathers. V.A.T. included.

Mallory Park bound? Stop at the Post House

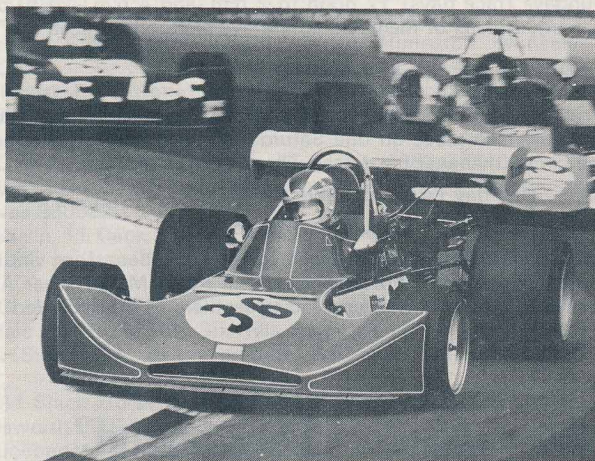
Why race home? Make a weekend of it and stay at the *Post House, Leicester*, just off the M1 (exit 21), 17 miles from the circuit. All our bedrooms have a private bathroom, radio, television and telephone, plus a Grill restaurant, Buttery and two bars. *Special weekend tariff* £2.25 per person per night (twin room). £3.50 per person per night (single room). When you visit *Oulton Park*, drop into the *Post House* at *Newcastle-under-Lyme*. If you're going to *Snetterton*, stop at the *Post House, Norwich*.

THE POST HOUSE
Braunstone Lane, Leicester
Tel: Leicester 896688 (STD 0533)



Trust Houses Forte
good care—everywhere

BRITAIN'S FIRST International in 1974



John Player FORMULA ATLANTIC

International Car Races

Supported by 1st Round of the
Castrol Anniversary Touring
Car Championship.

SUNDAY MARCH 10th

MALLORY PARK

The 1974 Accommodation Grand Prix: How to get pole position.

As the season starts, the race for comfortable hotels heats up.

Give yourself a head start by booking now at any one of the Grand Metropolitan County Hotels shown below.

Cuisine and comfort are of the highest standard.

You'll find a booking form overleaf.

	S	SB	T	TB
Brands Hatch				
Europa Lodge, Tollgate, Gravesend	-	4-95	-	7-70
Europa Lodge, N. Stifford, Essex	-	4-95	-	7-70
Slatters Hotel, Canterbury	4-00	4-95	7-00	8-25
Dover Stage, Dover	4-40	-	7-00	-

Oulton Park				
Royal George, Knutsford	4-60	5-50	7-00	8-25
Bradford Hotel, Liverpool	3-85	4-40	6-60	7-70

Mallory Park				
Europa Lodge, Leicester Forest East	-	4-95	-	7-70
Europa Lodge, West Bromwich	-	5-50	-	7-70

Snetterton				
Lamb Hotel, Ely	3-85	-	6-60	-
Star Hotel, Great Yarmouth	3-85	4-95	6-60	7-70

Rates shown above apply from April 1 to Sept. 30 1974.

For the remainder of the year deduct 10%

Rates include full English breakfast and service, but not VAT

London				
Grosvenor-Victoria, Buckingham Palace Road, SW1.	4-50	6-20	7-50	9-50
Kennedy, alongside Euston Station	-	6-50	-	10-00
Penta, Cromwell Road, SW7	-	7-00	-	10-50
Mostyn, Nr. Marble Arch, W1	4-50	6-20	7-50	9-50

Rates are fully inclusive of continental breakfast & service but are subject to VAT.

Please use the booking form overleaf.

Your entry form for the best positions in the Accommodation Grand Prix.

Use this form now, and you'll be sure of the best rooms in the best hotels.

This form simply makes a reservation for you which will be confirmed in writing

Full details on the hotel will be sent to you when we get your booking - or tick the box if you want free details.

Complete this form; tear out and post to:
Chris York,
Grand Metropolitan County Hotels,
Stratford Place, London, W.1.



Grand Metropolitan County Hotels.

You'll be staying with friends.

Name _____

Address _____

Please reserve _____ room(s) - single/single with bath

twin/twin with bath at _____ Hotel.

I will require the room(s) from _____

for _____ nights.

Please send me free details. ☐

	Approximate Normal Cost (inc. V.A.T.)	Season Ticket Cost
--	---	--------------------------

BRANDS HATCH 1974 CAR SEASON (Excluding Grand Prix and Stock Car Meetings)

£11: Admitting to public enclosures and Paddock for approx. 32 events.

over £50 **£11**
£10

MALLORY PARK 1974 CAR SEASON

£6: Admitting to public enclosures and Paddock for approx. 16 events.

£22 **£6**
£5

OULTON PARK 1974 CAR SEASON

£8: Admitting to course and Paddock for all 14 events.

£19 **£8**
£7

SNETTERTON 1974 CAR SEASON

£5: Admitting to public enclosures and Paddock for approx. 16 events (not Stock Cars).

£19 **£5**
£4

BRANDS HATCH 1974 MOTORCYCLE SEASON

£6: Admitting to public enclosures and Paddock for approx. 19 road races, including four internationals.

£17 **£6**

MALLORY PARK 1974 MOTORCYCLE SEASON

£5: Admitting to public enclosures and Paddock for all 12 events, including three internationals.

£14 **£5**

OULTON PARK 1974 MOTORCYCLE SEASON

£3.50: Admitting to course and Paddock for all three events, including two internationals.

£5 **£3.50**

SNETTERTON 1974 MOTORCYCLE SEASON

£4: Admitting to public enclosures and Paddock for approx. 26 events, including one international.

£15 **£4**

Brands Hatch Circuit Ltd., Fawkham, Nr. Dartford, Kent, DA3 8NG.

Registered Office: 45 Circus Road, St. John's Wood, London NW8 9JJ.
Registered in England No. 291068.

Cheshire Car Circuit Ltd., Oulton Park, Little Budworth, Tarporeley, Cheshire, CW6 9BW.

Registered Office: 29 Eastgate Row North, Chester CH1 1NH.
Registered in England No. 515994.

Mallory Park Circuit Ltd., Kirkby Mallory, Leicester, LE9 7QE.

Registered Office: 45 Circus Road, St. John's Wood, London NW8 9JJ.
Registered in England No. 775331.

Snetterton Circuit Ltd., Norwich, Norfolk, NOR 10X.

Registered Office: 45 Circus Road, St. John's Wood, London NW8 9JJ.
Registered in England No. 775334.

stadia cater

at locations throughout the British Isles for competitors and spectators alike at

AIR DISPLAYS, ASSOCIATION FOOTBALL, AGRICULTURAL SHOWS, CYCLING, COUNTY CRICKET, DRAG RACING, FETES, GREYHOUND RACING, GOLF TOURNAMENTS, HILL CLIMBS, HORSE RACING, MOTOR CYCLE RACING, PONY TROTTERING, RALLY CROSS, RUGBY LEAGUE, RUGBY UNION, SPEEDWAY SWIMMING.

for all leisure activities . . .

stadia catering services
3 George St., Oxford OX1 2AT
telephones:
Oxford 45133 or 40841

AGOSTINI AT SPEED

Giant 20" x 30" close-up colour photograph of the multi-World Champion. 48p inclusive from the Publicity Department, Brands Hatch Circuit Ltd., Fawkham, Dartford, Kent DA3 8NG.

Special offer to Speed International members, 38p inclusive.



The Rothmans 1974 Formula 5000

European Championship

presented by Rothmans
and Motor Circuit Developments Ltd.

List of Events

16/17 March Brands Hatch	2 June Zandvoort	18 August Thruxton
24 March Mallory Park	16 June Misano	26 August Brands Hatch
6/7 April Silverstone	23 June Mugello	8 September Oulton Park
12 April Oulton Park	30 June Monza	15 September Imola
15 April Brands Hatch	14 July Mallory Park	22 September Mondello Park
28 April Zolder	28 July Mondello Park	6 October Snetterton
5 May Mantorp Park	4 August Silverstone	13 October Mallory Park
19 May Jyllandsringen	11 August Mantorp Park	20 October Brands Hatch
27 May Thruxton		

The above dates are correct at the time of going to press

Fast, Powerful, Spectacular
5,000 c.c. — 450 h.p. —
V8 — Single Seaters

MALLORY PARK

DATE	EVENT
3 March	Rothmans National Motor Cycle Races
10 MARCH	INTERNATIONAL CAR RACES
24 MARCH	ROTHMANS 5000 EUROPEAN CHAMPIONSHIP INTERNATIONAL CAR RACES
7 April	Clubmans Motor Cycle Races
14 APRIL	JOHN PLAYER TRANSATLANTIC TROPHY INTERNATIONAL MOTOR CYCLE RACES
15 APRIL	JOHN PLAYER INTERNATIONAL F3 RACES
†21 April	Scooter Trial
28 April	British Oxygen Trophy Car Races
† 5 May	Clubmans Motor Cycle Races
12 May	BP Vintage Motor Cycle Meeting of the Year
19 May	Clubmans Car Races
26 May	Rothmans National Motor Cycle Races
27 MAY	JOHN PLAYER ATLANTIC INTERNATIONAL CAR RACES
9 JUNE	ROTHMANS POST-TT INTERNATIONAL MOTOR CYCLE RACES

ORGANISER	MAIN RACES	CHARGES (INC. VAT)
EMACU	All Classes	80p-A, 30p-C, 40p-S, 50p-P
BARC	FA*, Gp1*, F3*	£1.00-A, 50p-C, 50p-S, 50p-P
BRSCC	F5000*, PS*, SS, FF*	£1.00-A, 50p-C, 70p-S, £1.00-P
EMACU	All Classes	50p-A, 30p-C, 20p-P, SF
EMACU	SUPERBIKES, etc.	£1.00-A, 30p-C, 80p-S, £1.00-P
BRSCC	F3, SS*, Mex*, FF*	£1.00-A, 30p-C, 50p-S, 50p-P
LASCA	Scooters	No charge to public
BARC	FA*, FF*, SS*, C*	80p-A, 30p-C, 50p-P, SF
EMACU	All Classes	50p-A, 30p-C, 20p-P, SF
VMCC & EMACU	All Vintage Classes	80p-A, 30p-C, 50p-P, SF
BARC	SSF, S, SS	70p-A, 30p-C, 40p-P, SF
EMACU	All Classes	80p-A, 30p-C, 40p-S, 50p-P
BRSCC	FA*, PS*, SS, FF	£1.00-A, 30p-C, 50p-S, 50p-P
EMACU	ALL CLASSES	£1.00-A, 30p-C, 80p-S, £1.00-P

THE F3 CHAMPIONSHIP

9 Mar.	MCMRC	Oulton Park	Championship
17 Mar.	BRDC	Silverstone	Championship
12 Apl.	BRSCC	Oulton Park	Good Friday
27 Apl.	BARC	Oulton Park	Championship
26 May	BRSCC	Brands Hatch	Fordspport Day
30 June	TEAC	Snetterton	Championship
28 July	BRSCC	Snetterton	Championship
10 Aug.	LCC	Oulton Park	Championship
11 Aug.	BARC	Brands Hatch	Championship
25 Aug.	BRSCC	Mallory Park	Fordspport Day
26 Aug.	BRDC	Silverstone	August Monday
22 Sept.	BARC	Thruxton	Championship
28 Sept.	BRSCC	Oulton Park	Fordspport Day
13 Oct.	TEAC	Brands Hatch	Finals

Once again we sponsor THE F3 Championship for your pleasure and the advancement of motor sport

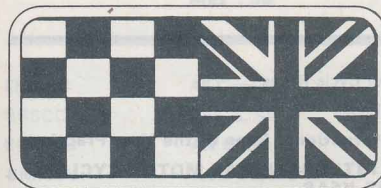
Lombard
North Central

Banking · Instalment Credit · Leasing
Branches throughout Great Britain

Speed International

As a member of **Speed International** you can enjoy the following privileges:

- ★ Big discounts on race tickets.
- ★ Extra discount on Circuit Season Passes.
- ★ £5 overseas trip vouchers.
- ★ Special bargain offers.
- ★ One FREE race ticket to your local MCD Circuit.
- ★ Drive your car on our circuit at attractive discount rates.



Full details of FREE membership from Speed International, Brands Hatch Circuit, Fawkham, Nr. Dartford, Kent DA3 8NG.

Cut out this coupon, complete and post today to SPEED INTERNATIONAL. I would like to join Speed International. Please send me my membership card and further details. Please print name and address in block capitals.

Name _____

Address _____

MALLORY PARK

DATE	EVENT
†16 June	Clubmans Car Races
23 June	Championship Car Races
30 June	Clubmans Motor Cycle Races
14 JULY	ROTHMANS 5000 EUROPEAN CHAMPIONSHIP INTERNATIONAL CAR RACES
28 July	Simoniz Trophy Car Races
4 Aug	Clubmans Motor Cycle Races
11 Aug.	Atlantic Trophy Car Races
25 AUG.	FORDSPORT DAY AND CAR RACES
1 Sept.	Clubmans Motor Cycle Races
† 8 Sept.	Clubmans Car Races
14 Sept.	Rothmans International Race of the Year Practice
15 SEPT.	ROTHMANS INTERNATIONAL MOTOR CYCLE RACE OF THE YEAR
†22 Sept.	Clubmans Motor Cycle Races
29 Sept.	Championship Car Races
13 OCT.	ROTHMANS 5000 EUROPEAN CHAMPIONSHIP INTERNATIONAL CAR RACES
27 Oct.	Championship Car Races

ORGANISER	MAIN RACES	CHARGES (INC. VAT)
750MC	SSF, S, SS	70p-A, 30p-C, 40p-P, SF
BRSCC	FA*, S*, SS*, FF*	80p-A, 30p-C, 50p-P, SF
EMACU	All Classes	50p-A, 30p-C, 20p-P, SF
T.B.Adv.	F5000*, SS*, PS* FF	£1.00-A, 50p-C, 70p-S, £1.00-P
BARC	*SS*, FF*, SSF	70p-A, 30p-C, 40p-P, SF
EMACU	All Classes	50p-A 30p-C 20p-P, SF
HDLCC	FA*, FF*, SS*, C*	80p-A, 30p-C, 50p-P, SF
BRSCC	FA*, F3*, FF*, Mex*, SS	£1.00-A, 30p-C, 50p-S, 50p-P
EMACU	All Classes	50p-A, 30p-C, 20p-P, SF
BRSCC	SSF, S, SS	70p-A, 30p-C, 40p-P, SF
EMACU	All Classes	40p-A, 20p-C, 50p-P
EMACU	ALL CLASSES	£1.20-A, 40p-C, £1.00-S, £1.00-P
EMACU	All Classes	50p-A, 30p-C, 20p-P, SF
BARC	PS*, SS*, C*, FF, SSF	80p-A, 30p-C, 50p-P, SF
BRSCC	F5000*, Super Saloons FA*, PS*, S*,FF	£1.00-A, 50p-C, 70p-S, £1.00-P
London CC	C*, SSF, S, SS	80p-A, 30p-C, 50p-P, SF

Oulton Park bound? Stop at the Post House

Why race home? Make a weekend of it and stay at the *Post House, Newcastle-under-Lyme*, just off the M6, 31 miles from the circuit. All our bedrooms have a private bathroom, radio, television, and telephone, plus a restaurant, Buttery and two bars.

When you visit *Mallory Park*, drop into the *Post House* at *Leicester*. If you're going to *Snetterton*, stop off at the *Post House, Norwich*.

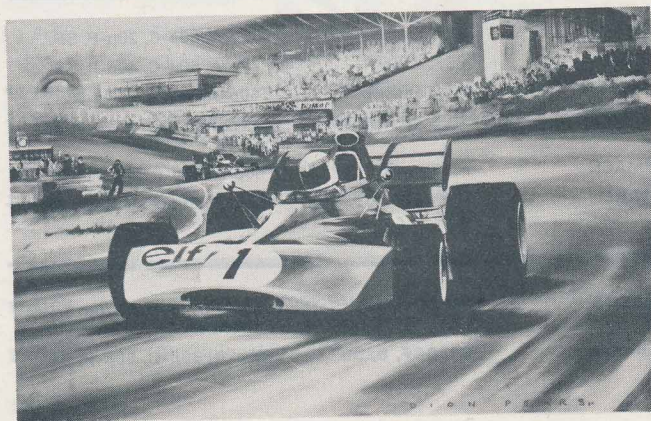
THE POST HOUSE
Clayton Road, Newcastle-under-Lyme
Tel: Newcastle-under-Lyme 57264 STD 0782



Trust Houses Forte
good care-everywhere

JACKIE STEWART IN ACTION

Giant 20" x 30" colour print from an oil painting by Dion Pears.
48p inclusive from the Publicity Department, Brands Hatch Circuit Ltd.
Fawkham, Dartford, Kent DA3 8NG.
Special offer to Speed International members, 38p inclusive.



OULTON PARK

- HOW TO GET THERE
- WHERE TO STAY
- WHERE TO EAT
- WHERE TO DRINK

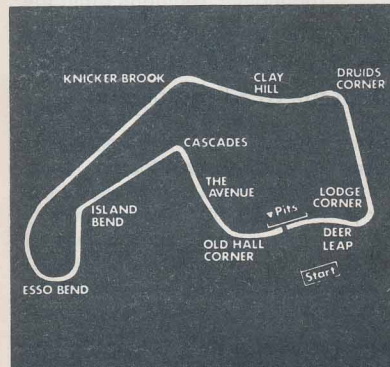
Oulton Park is the North of England's leading motor racing circuit with a varied programme of 18 events for cars and motor cycles from early March to late October. It is a circuit of many attractions, both visually and for the challenge which it presents for drivers and riders.

As its name implies, it is a parkland circuit, set amid undulating countryside bordered by lakes which were once an additional hazard to erring competitors, as were the avenues of trees which once lined the trackside. Modern safety measures have eliminated these particular hazards but the 2½ mile track with its fast straights and varied curves continues to pose the greatest problems to the competitors who want to challenge the 117 m.p.h. lap record held by Grand Prix driver, ex-world champion, Denny Hulme.

The programme of racing encompasses all types of cars and motor cycles from mighty Formula 5000s and Superbikes to Vintage machinery, with a full range of highly competitive championships guaranteeing top class entries and exciting racing.

Enquiries:

Telephone: Little Budworth (STD 082-921) 301.



2.75 miles.

Off the A.54, near Tarporley in Cheshire.

**Cheshire Car
Circuit Limited,
Oulton Park,
Little Budworth,
Tarporley,
Cheshire CW6 9BW.
Tel. Little Budworth
(STD 082-921) 301**

WE'RE THE LARGEST MOTOR SPORTING CLUB IN BRITAIN



AND THE MOST EXPERIENCED - AFTER ALL WE WERE FOUNDED IN 1912.

If you're a competitor, marshal or spectator and not already a member why not join us? Just fill in the form below and find out all about the BEST motor club.

Please send membership form and full details of BARC

NAME

ADDRESS

General Manager, British Automobile Racing Club, Thruxton Motor
Racing Circuit, Nr. Andover, Hants. (Tel: Weyhill 2607) BB74

HOW TO GET THERE . . .

BY CAR. Situated to the north-east of Tarporley in Cheshire, Oulton Park can be reached by several major access routes. The nearest main road is the A.49 (Whitchurch-Warrington), which crosses the A.54, running from Chester in the west to join the M.6 motorway in the east, to the north of the circuit. Leave M.6 by junction 19 from North and 18 from the South.

BY BUS. The North Western Road Co. Ltd., operates a network of services from Manchester, Macclesfield, Warrington and Altrincham to Northwich (six miles from Oulton Park) and then a shuttle service from Northwich Omnibus Station to the circuit as traffic demands. For further details, telephone: Stockport, 2213.

The Crosville Motor Services will operate a bus service from Chester (Delamere Street) and from Crewe to Oulton Park, and information can be obtained by ringing Chester 24151.

BY TRAIN. The nearest station is Crewe on the main line from Euston. For local rail service enquiries, telephone: Crewe 55123.

BY TAXI. Due to the swift change-over of local services, it would be misleading to list firms in the area.

BY AIR.

The nearest airfield for landing light aircraft is Hawarden, 20 miles away. (Telephone: Hawarden 3081).

The nearest airports for scheduled services are Ringway, Manchester (B.A.); Speke, Liverpool (Cambrian) and Hawarden (Cambrian).

For flight enquiries, telephone:

Speke, Liverpool.

Ringway, Manchester.

Hawarden.

Garston 4101.

Mercury 5233.

Hawarden 3081.

WHERE TO STAY . . .

HOTELS. For accommodation within easy driving distance of circuit, hotels in the vicinity are as follows:

Wild Boar Motel, Bunbury.

Grosvenor Hotel, Chester.

Blossoms Hotel, Chester.

Queen Hotel, Chester.

Excelsior Hotel, Manchester Airport.

Post House Motel, M.6., Newcastle.

Rowton Hall, Chester.

Abbots Well Motor Inn.

Bunbury 309.

Chester 24024.

Chester 23186.

Chester 28314.

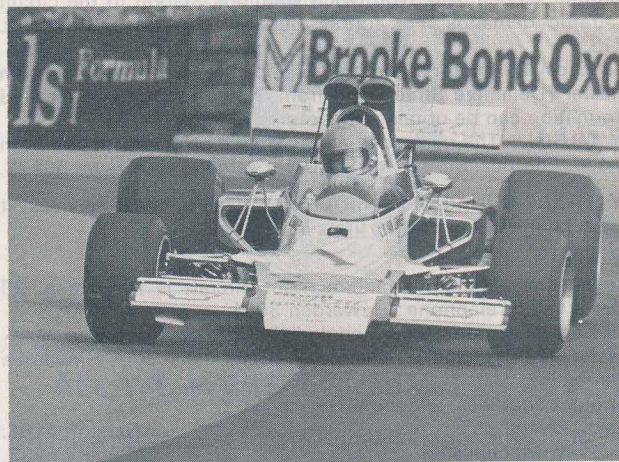
Manchester 5811.

Stoke 57264.

Chester 35262.

Chester 35021.

Rothmans Gold Cup for Formula 5000



September 8th

Practice on September 7th

OULTON PARK

LOCAL INNS . . .

The Rising Sun.
Swan Hotel.
Perth Hotel.
Crown Hotel.

Tarporley 2423.
Tarporley 2411.
Tarporley 2514.
Tarporley 2416.

CAMPING AND CARAVANNING. Facilities are available on the circuit to those who hold admission tickets on the day in question.

WHERE TO EAT AND DRINK . . .

RESTAURANTS. The following first-class restaurants are in the vicinity of the circuit: (approximate mileages indicated).

Wild Boar, Bunbury.	Bunbury 309 (4 m).
Grosvenor Hotel, Chester.	Chester 24024 (9 m).
Blossoms Hotel, Chester.	Chester 23186 (9 m).
Grosvenor Arms, Aldford.	Aldford 47 (9 m).
Rowton Hall, Chester.	Chester 35262 (9 m).
Abbots Well Motor Inn.	Chester 35021 (9 m).

SNACK MEALS. Within easy reach of the circuit are the following pubs for snacks and light meals (approximate mileages indicated):

Red Lion, Little Budworth.	($\frac{1}{2}$ m).
Blue Cap, Sandiway (A.56).	(3 m).
Rising Sun, Tarporley (A.51).	(4 m).
Swan Hotel, Tarporley (A.51).	(4 m).
Smoker Inn, Plumley (A.56).	(5 m).

AT THE CIRCUIT. Full refreshment facilities are open at the circuit on race days. In the Paddock area are a restaurant and cafeteria with a licensed bar in each, and snackbars are located in each of the three car parking areas.

GENERAL INFORMATION . . .

Practice facilities. Private practice can take place at the circuit on any weekday. The charge is £19 per day, or £5 for: 8 a.m.–11.00 a.m. and £7 for 11.00 a.m.–2 p.m., and 2 p.m.–5.00 p.m. For further details and conditions of practice, contact the circuit. V.A.T. extra.

OULTON PARK

DATE	EVENT
9 March	Simoniz Spring Trophy Car Races
17 March	Rothmans National Motor Cycle Races
30 March	Castrol Saloon Car Trophy Races
11 April	Practice for April 12
12 APRIL	ROTHMANS 5000 EUROPEAN CHAMPIONSHIP INTERNATIONAL CAR RACES
15 APRIL	JOHN PLAYER TRANSATLANTIC TROPHY INTERNATIONAL MOTOR CYCLE RACES
27 APRIL	PRODUCTION SALOON 100 KM CAR RACES
5 MAY	JOHN PLAYER TROPHY INTERNATIONAL CAR RACES
27 MAY	JOHN PLAYER FORMULA 3 AND SPARKS SPORTS STARS INTERNATIONAL TROPHY CAR RACES
15 June	Richard Seaman Trophies Historic Car Races
13 July	Avon Tour of Britain Car Races
27 July	BARC Championship Car Races
10 Aug.	Lombard North Central Trophy Car Races
24 Aug.	Kart Races and Motor Cycle Practice
26 AUG.	DAILY EXPRESS INTERNATIONAL ACU MOTOR CYCLE CHAMPIONSHIPS
7 Sept.	Practice for Sept. 8
8 SEPT.	ROTHMANS GOLD CUP CAR RACES
28 SEPT.	FORDSPORT DAY CAR RACES
6 OCT.	JOHN PLAYER ATLANTIC INTERNATIONAL CAR RACES
26 Oct.	STP Trophy Saloon Car Races

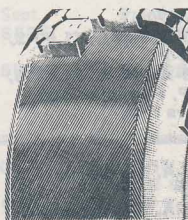
ORGANISER	MAIN RACES	CHARGES (INC. VAT)
MCMRC Cheshire ACU BRSCC	F3*, PS*, SS*, FF* All Classes PS*, Mex*, C*, S*, FF*	£1.00-A, 30p-C, Inc-P 80p-A, 30p-C, 50p-P £1.00-A, 30p-C, Inc-P
BRSCC	5000*, F3*, Gp1*, FF*	50p-A, 20p-C £1.20-A, 50p-C, 80p-S 80p-P
CHESHIRE ACU	SUPERBIKES, etc.	£1.00-A, 30p-C, 50p-S, £1.00-P
BARC	PS*, F3*, SS*, FF*	£1.00-A, 30p-C, Inc-P
LCCC	FA*, PS*, SS, FF*,	£1.00-A, 30p-C, 50p-S, 50p-P
BRSCC	F3, Super Saloons SS*, PS FF,	£1.00-A, 30p-C, 50p-S, 80p-P
VSCC	Vintage & Hist	£1.00-A, 30p-C, 50p-S, £1.00-P
BRSCC BARC	Production Saloons F3*, PS*, SS*, FF*	£1.00-A, 30p-C, Inc-P £1.00-A, 30p-C, Inc-P
LCCC Cheshire ACU ACU	Hist, F3*, PS*, SS* Karts, M/Cs ALL CLASSES	£1.00-A, 30p-C, Inc-P 60p-A 30p-C Inc-P £1.00-A, 30p-C, 50p-S, 80p-P
MCMRC	5000*, Gp1*, FF*, Hist*	50p-A 20p-C £1.20-A, 50p-C, £1.00-S, £1.00-P
BRSCC	F3*, SS*, FF*, Mex*	£1.00-A, 30p-C, £1.00-S, 50p-P, Ford cars and drivers free
BARC	FA*, PS*, SS*	£1.00-A, 30p-C, 50p-S, 50p-P
LCCC	S*, SS*, FF	£1.00-A, 30p-C, Inc-P

Protect your family with steel.

Fit the **Firestone** Cavallino S-1 Radial



—the tyre with the **RING OF STEEL**



It's completely new, inside and out, with rugged construction and a sleek, racy appearance. Protective steel belts beneath the computer-designed tread are made of high tensile steel strands coated with brass and cushioned in a special Firestone rubber compound. Sure-footed on the road, quiet and comfortable to ride on with extra life built in to save you money.

- Up to double the mileage of an ordinary crossply tyre
- Superior car handling
- Excellent wet traction
- Outstanding protection against cuts and punctures

SNETTERTON

- HOW TO GET THERE
- WHERE TO STAY
- WHERE TO EAT
- WHERE TO DRINK

East Anglia's motor racing circuit is one of the fastest in the country and it is also quick for access—straight off the main London-Norwich road, the A.11. It has earned its place in history for its night races (resurrected in 1973 for the Avon Tour of Britain) and as one of the main test tracks for Norfolk's expanding race car building industry.

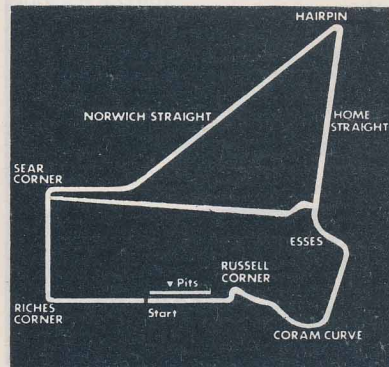
Car racing enthusiasts will see a major change during the spring of 1974 when work on an extensively modified and shorter circuit is due for completion, giving greatly improved spectator viewing and facilities and some exciting new bends.

Motor cyclists will retain the ultra-fast Norwich Straight for at least some of their meetings, with speeds in the region of 150 m.p.h. being attained before the savagely heavy braking demanded by the tight hairpin bend which follows.

The 1974 programme includes some 50 meetings for all types of cars, motor cycles, karts, stock cars and even scooters.

Enquiries:

Telephone: Quidenham 303-4.



2.71 miles.

On the A.11 London to Norwich Road, between Thetford and Attleborough.

**Snetterton
Circuit Limited,
Norwich,
Norfolk,
NOR 10X.
Tel. Quidenham 303**

Monaco

GRAND PRIX®

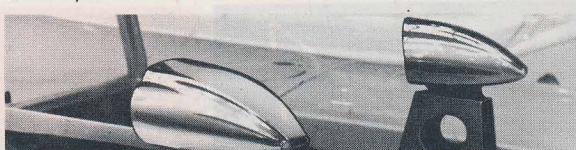
"NOT ONLY RACING GREATS LOOK INTO MONACO"



- ★ Vibration free ★ Fully adjustable lens
- ★ Large mirror area ★ Lightweight ★ Tamper-proof

Chrome		} £2.50 to £3.00
Matt black		
Flamenco red	Standard Vauxhall	
Monaco white	Standard Vauxhall	
Monza blue	Standard Ford	
Daytona yellow	Standard Ford	
Sebring red	Standard Ford	

Suitable for door or wing mounting by self tapping screws, also available in the following lenses Flat, Flat/ad, Convex, Convex/ad.



TRADE ENQUIRIES WELCOME



"C.C.A." CASTLE CAR ACCESSORIES

UNIT 2a · DUPE WORKS
THE HYDE · HENDON · LONDON NW9

Telephone: 01-205 2359

HOW TO GET THERE . . .

BY CAR. The main A.11 road from London (via Cambridge, Newmarket and Thetford) to Norwich passes right outside the circuit and is the best way to reach it.

BY BUS. Eastern Counties Omnibus Co., Service 12, runs from Norwich to Attleborough on the A.11, and the nearest alighting point to the circuit is at Queens Square, Attleborough. Special bus facilities for parties of spectators travelling to the circuit can be arranged by contacting the bus company, telephone: Norwich 20491.

BY TRAIN. The nearest railway stations are Attleborough and Thetford on the main Norwich-Cambridge line. For local train service enquiries, telephone: Norwich 20255.

BY TAXI. The following local firms are available:
 Station Garage, Attleborough. (Attleborough 3210).
 Wells Taxis, Norwich. (Norwich 26201).
 Beeline Taxis, Norwich. (Norwich 21536).
 Nitehire Taxi Service, Thetford. (Thetford 4364).

BY AIR. Landing facilities for light aircraft only are available at the circuit. Applications for landing permission must be made to the Circuit Manager at least seven days prior to date of landing. The nearest airport for scheduled services is at Norwich (telephone: Norwich 46248), and information concerning flights can be obtained by contacting the Airport Manager, Mr. R. N. H. Courtney, Fifers Lane, Norwich NOR 6ON. The main airline company operating services to the airport is Air Anglia Ltd., (telephone: Norwich 43766).

Chartered services are operated by: Peters Aviation Ltd. (Norwich 42336).

GARAGE FACILITIES. There is a petrol station open on race days at the circuit. Snetterton Filling Station, outside the circuit on the A.11, is also open on Sundays for petrol. For repairs, the nearest garage is E. E. Smith & Sons at Attleborough (Telephone: Attleborough 2134).

WHERE TO STAY . . .

CAMPING AND CARAVANNING. Camping facilities are available at the circuit by prior arrangement with the circuit manager. Alternatively, the nearest site is at Oak Tree Farm, Norwich Road, Attleborough. Contact Mr. D. R. Harrison at Attleborough 3105.

6 Brands Hatch posters for 50p

A limited number of motor racing and motorcycle posters are now being offered at the bargain price of 6 for 50p. The usual price of these would be £1.20p. Hurry and send 50p postal order made payable to Brands Hatch Circuit Ltd, and you will receive by return of post six colourful motor racing posters.

Letters should be addressed to:

**Publicity Manager, Brands Hatch Circuit Ltd,
Fawkham, Nr. Dartford, Kent DA3 8NG**

Registered Office: 45 Circus Road, St. John's Wood, London NW8 3JJ
Registered in England No. 291068



HOTELS. For overnight accommodation, the following hotels are within easy driving distance of the circuit:

Royal Hotel, Attleborough.	Attleborough 2124.
Bell Hotel, Thetford.	Thetford 4455.
Bunwell Manor, Bunwell.	Bunwell 317.
Central Hotel, Thetford.	Thetford 2259.
Angel Hotel, Bury St. Edmunds.	Bury St. Eds. 3926.
Phoenix Hotel, Dereham.	Dereham 2276.
Lansdowne Hotel, Norwich.	Norwich 20302.
Royal Hotel, Norwich.	Norwich 28434.
Castle Hotel, Norwich.	Norwich 24283.
Bull Inn, Barton Mills.	Mildenhall 713230.
Abbey Hotel.	Wymondham 2148.
Halford Guest House.	Attleborough 3314.
Croxford Lodge, Thetford.	Thetford 3082.
Post House Hotel (Trust House), Norwich.	Norwich 56431.
Hotel Nelson, Norwich.	Norwich 28612.
Hotel Norwich, Norwich.	Norwich 410431.

WHERE TO EAT AND DRINK . . .

RESTAURANTS. The nearest high-class restaurants within reach of the circuit are as follows:

The Griffin, Attleborough.	Attleborough 2149 (5 m).
Bunwell Manor, Bunwell.	Bunwell 317 (8 m).
The Bell Hotel, Thetford.	Thetford 4455 (10 m).
The Angel Hotel, Thetford.	Thetford 2310 (10 m).
The Central Hotel, Thetford.	Thetford 2259 (10 m).
Abbey Hotel.	Wymondham 2148 (11 m).
The Angel Hotel, Bury St. Edmunds.	Bury St. Eds. 3926 (12 m).
The King's Head, Diss.	Diss 2016 (12 m).
The Phoenix Hotel, Dereham.	Dereham 2276 (20 m).
Lansdowne Hotel, Norwich.	Norwich 20302 (20 m).

SNACK MEALS. Local eating-houses and pubs for snacks and light meals are as follows:

The Angel, Larling.	East Harling 296 (1½ m).
Fettle Bridge Filling Station, Attleborough.	Attleborough 2215 (2 m).
White Lodge Inn, Attleborough.	Attleborough 3136 (2 m).
(These three are situated on the A.11 road.)	
The Bear, Attleborough.	Attleborough 3280 (5 m).
The Norfolk Plover, Thetford.	Thetford 3145 (10 m).

AT THE CIRCUIT. On race days there is a restaurant open in the Paddock, and snack bars at the Hairpin, Esses, Coram Curve, Start Line and Riches. Refreshment facilities on weekdays are available only by special arrangement.

JOIN NOW

and enjoy all the advantages of Britain's leading Motor Racing Club



The British Racing and Sports Car Club

The National Club for the Enthusiast

- **'BRITISH RACING NEWS'**—Free bi-monthly.
- **SPECTATOR FACILITIES**—Exclusive free members enclosure at Brands Hatch.
- **ADVANCED DISCOUNT BOOKINGS**—Concessionary admission prices at most circuits.
- **CLUB NIGHTS**—Monthly local film shows and talks by motor sporting personalities.
- **RACING CAR SHOW**—Free admission and special members lounge.
- **CLUB INSIGNIA**—Jackets, ties, car, lapel and blazer badges.
- **CIRCUIT RACING**—Over 50 meetings at 10 circuits.
- **PROVINCIAL CENTRES**—Covering the whole country.
- **DINNER DANCES**—Grand social occasions.
- **MIDNIGHT FILM SHOWS**—Organised by your local Centre.
- **SPEED INTERNATIONAL**—Free membership.
- **RACE ENTRY SERVICE**—Exclusive to the BRSCC Racing Register.

The Annual Subscription costs £3.15., plus a further £1 if you wish to be placed on the Racing Register. There is a £1.05 entry fee to the Club. Join by bankers order and save 5%.

SEND NOW
FOR FURTHER
DETAILS AND
MEMBERSHIP
APPLICATION
FORM

**BRITISH RACING &
SPORTS CAR CLUB**
Empire House
Chiswick High Road
London W4 5TW
Telephone 01-995 0345

The Snetterton Clubhouse is open for members and their guests on Tuesday and Thursday evenings (7 p.m.–10.30 p.m.) and on all race days.

GENERAL INFORMATION . . .

Practice facilities:

Motor cycles & Combinations	Mondays 9.00 a.m.–1.00 p.m.
	Wednesdays 9.00 a.m.–5.00 p.m.
Cars	Mondays 1.00 p.m.–5.00 p.m.
	Thursdays 9.00 a.m.–5.00 p.m.

Costs including VAT are as follows:

Cars: half day £5.50; whole day £7.70.
Motor cycles & Combinations - half day £2.75; whole day £4.40.
Extra riders or drivers £1.10 each.

Those wishing to make use of the facilities should always telephone the circuit beforehand to confirm availability as the circuit may be closed on various occasions.

Conditions: Drivers and Riders must bring a current Competitions Licence and crash helmet. Motor cyclists should wear leathers or a Barbour suit, goggles or visors and gloves. Drivers of open cars also need goggles or a visor and all headlamps must be taped.

Snetterton bound? Stop at the Post House

Why race home? Make a weekend of it and stay at the Post House, Norwich on the A140 – 20 miles from the circuit. All our bedrooms have a private bathroom, radio, television and telephone, plus a restaurant, Buttery and two welcoming bars.

When you visit *Mallory Park*, drop into the *Post House at Leicester*. If you're going to *Oulton Park*, stop off at the *Post House, Newcastle-under-Lyme*.

THE POST HOUSE
Ipswich Road, Norwich
Tel: Norwich 56431 STD 0603



Trust Houses Forte
good care-everywhere

DATE	EVENT
2 March	Clubmans Motor Cycle Races
3 March	Car Sprint Meeting
10 March	Clubmans Motor Cycle Races
17 March	Clubmans Motor Cycle Races
24 March	Championship Car Races
30 March	Scooter Races
31 March	Stock Cars or Bangers and Hot Rod Races

7 April	Clubmans Motor Cycle Races
12 April	Clubmans Motor Cycle Races
14 APRIL	JOHN PLAYER 100 INTERNATIONAL CAR RACES
15 April	National Motor Cycle Races
20 April	Clubmans Motor Cycle Races
21 April	Clubmans Motor Cycle Races
28 April	Clubmans Motor Cycle Races

4 May	Clubmans Motor Cycle Races
5 May	Stock Cars or Bangers and Hot Rod Races
11 May	Clubmans Motor Cycle Races

ORGANISER	MAIN RACES	CHARGES (INC. VAT)
BMCRC	All Classes	50p-A, 30p-C, Rovers
CUAC	S, SS, GT	50p-A, CF, Rovers
Bantam MC	All Classes	50p-A, 20p-C, Rovers
Newmarket DMC	All Classes	50p-A, 30p-C, Rovers
WECC	SS*, C*, SSF, FF	80p-A, 30p-C, 50p-P
LC (GB)	Scooters	50p-A, CF, Rovers
Promotasport	Stock Cars or Bangers and Hot Rods	60p-A, 25p-C, 30p-S

ACU Eastern	All Classes	50p-A, 30p-C, Rovers
BMCRC	All Classes	50p-A, 30p-C, Rovers
BRSCC	FA*, Super Saloons PS*, Mex*, FF*	£1.00-A, 30p-C, 50p-S, 50p-P
Snett Comb	All Classes	70p-A, 30p-C, 40p-P
Newmarket DMC	All Classes	50p-A, 30p-C, Rovers
BFRC	All Classes	50p-A, 30p-C, Rovers
Racing 50	All Classes	50p-A, 30p-C, Rovers

Southern 67	All Classes	50p-A, 30p-C, Rovers
Promotasport	Stock Cars or Bangers and Hot Rods	60p-A, 25p-C, 30p-S
BMCRC	All Classes	50p-A, 30p-C, Rovers

DATE	EVENT
12 May	Production Saloon Car Races
19 May	Clubmans Motor Cycle Races
26 May	National Motor Cycle Races
27 MAY	CHAMPIONSHIP CAR RACES
2 June	Clubmans Motor Cycle Races
9 June	Clubmans Car Races
16 June	Stock Cars or Bangers and Hot Rod Races
23 June	Clubmans Motor Cycle Races
30 June	Lombard North Central F3 Championship Races
6 July	Clubmans Motor Cycle Races
7 July	Clubmans Motor Cycle Races
12 July	Avon Tour of Britain Midnight Car Races
14 July	Clubmans Car Races
21 July	Clubmans Motor Cycle Races
28 July	Castrol Saloon Car Championship Races
4 Aug.	Stock Cars or Bangers and Hot Rod Races
10 Aug.	Clubmans Motor Cycle Races
11 Aug.	Clubmans Car Races
18 Aug.	Astley Trophy Car Races

ORGANISER	MAIN RACES	CHARGES (INC. VAT)
BARC	PS*, SS*, C*, FF	80p-A, 30p-C, 50p-P
BFRC	All Classes	50p-A, 30p-C, Rovers
Snett Comb	All Classes	70p-A, 30p-C, 40p-P
BRSCC	PS*, FF*, S*, SSF, T	80p-A, 30p-C, 50p-P
BMCRC	All Classes	50p-A, 30p-C, Rovers
Romford ECC	SSF, S, SS	70p-A, 30p-C, 30p-P
Promotasport	Stock Cars or Bangers and Hot Rods	60p-A, 25p-C, 30p-S
Newmarket DMC	All Classes	50p-A, 30p-C, Rovers
TEAC	F3*, SS, GT, FF*	80p-A, 30p-C, 50p-P
Racing 50	All Classes	50p-A, 30p-C, Rovers
BMCRC	All Classes	50p-A 30p-C Rovers
BRSCC	Production Saloons	70p-A, 30p-C, Rovers
Romford ECC	SSF, SS, SS	70p-A, 30p-C, 30p-P
Newmarket DMC	All Classes	50p-A, 30p-C, Rovers
BRSCC	F3*, PS*, S*, FF	80p-A, 30p-C, 50p-P
Promotasport	Stock Cars or Bangers and Hot Rods	60p-A, 25p-C, 30p-S
Racing 50	All Classes	50p-A, 30p-C, Rovers
750 MC	S, T, FF	70p-A, 30p-C, 30p-P
WECC	SSF, S, SS	70p-A, 30p-C, 30p-P

DATE	EVENT
25 AUG.	ROTHMANS INTERNATIONAL MOTOR CYCLE "RACE OF ACES"
26 Aug.	Simoniz Cup Saloon Car Races
1 Sept.	Clubmans Motor Cycle Races
8 Sept.	Clubmans Motor Cycle Races
14 Sept.	Clubmans Motor Cycle Races
15 Sept.	Stock Cars or Bangers and Hot Rod Races
22 Sept.	Clubmans Motor Cycle Races
28 Sept.	9-Hour Kart Race
29 Sept.	Clubmans Car Races
6 OCT.	ROTHMANS 5000 EUROPEAN CHAMPIONSHIP AND ARCHIE SCOTT-BROWN MEMORIAL TROPHY CAR RACES
13 Oct.	Clubmans Motor Cycle Races
20 Oct.	National Motor Cycle Races
27 Oct.	Atlantic Championship Car Races
3 Nov.	Formula Ford Festival and Car Races
10 Nov.	Car Sprint Meeting

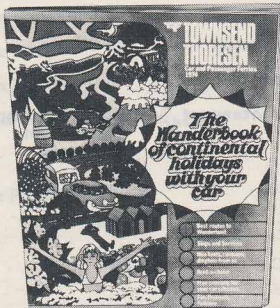
ORGANISER	MAIN RACES	CHARGES (INC. VAT)
SNETT COMB	ALL CLASSES	£1.00-A, 30p-C, 50p-S, 50p-P
BRSCC	SS*, S*, Mex*, FF	80p-A, 30p-C, 50p-P
BMCRC	All Classes	50p-A, 30p-C, Rovers
ACU Eastern	All Classes	50p-A, 30p-C, Rovers
Bantam MC	All Classes	50p-A, 30p-C, Rovers
Promotasport	Stock Cars or Bangers and Hot Rods	60p-A, 25p-C, 30p-S
BFRC	All Classes	50p-A, 30p-C, Rovers
BKC	Karts	35p-A, CF, Rovers
TEAC	SSF, S, SS	70p-A, 30p-C, 30p-P
BRSCC	F5000*, Gp1*, Mex*, FF*, Hist.	£1.00-A, 40p-C, 80p-S, 80p-P
Bantam MC	All Classes	50p-A, 30p-C, Rovers
Snett Comb	All Classes	70p-A, 30p-C, 40p-S, 40p-P
TEAC	FA*, SS, S, FF	80p-A, 30p-C, 50p-P
BRSCC	Formula Ford	70p-A, 30p-C, 30p-P
Cambridge CC	S, GT, SS	50p-A, CF, Rovers

Your way to Continental Wanderland begins here with this!

We call it our 'Wanderbook of Continental Holidays' because it shows you how – when you take your car with you – you can enjoy all the Continent's fabulous variety. It's wonderful to wander with this planner to help you.

It contains so much – selected itineraries, high spots on the way, hints about how to get the best out of motoring on the holiday Continent. You need to know how to get there – the 'Wanderbook' has the routes, the sailings, the prices and the 'take your car free' offers. You may wish to have a caravanning, camping or seaside chalet holiday. The 'Wanderbook' tells you all about Townsend Thoresen's great hire service with up to 50% rebate for passengers who travel both ways on our ships.

Send for the 'Wanderbook' now!



For your free Wanderbook & Bookings, Contact the Brands Hatch Circuit Shop, your local travel agent, motoring organisation, caravan club, camping club or Townsend Thoresen Car Ferries, P O Box 12, Dover, Kent

TOWNSEND THORESEN
Car and Passenger Ferries

Look out for Servis. The leading name in washing machines.

Servis

Servis Domestic Appliances Limited, Hollies Drive, Wednesbury, Staffordshire, WS10 9EJ.

GENERAL NOTES

CHILDREN MUST ALWAYS BE ACCOMPANIED

NO ANIMALS ADMITTED

Car Parking

Individual car parking spaces cannot be reserved, but car parking officials will ensure that vehicles enter as swiftly as possible and are parked systematically. Exit arrangements are governed by police requirements and spectators are asked to observe the directions given to them.

Vehicles are taken into the car parks on condition that the Company shall not be liable for loss of or damage to the vehicle, or of or to any part or accessory thereof, or of or to any animal or thing left in or about or with the vehicle, in whatever way or by whatever means such loss or damage may be caused.

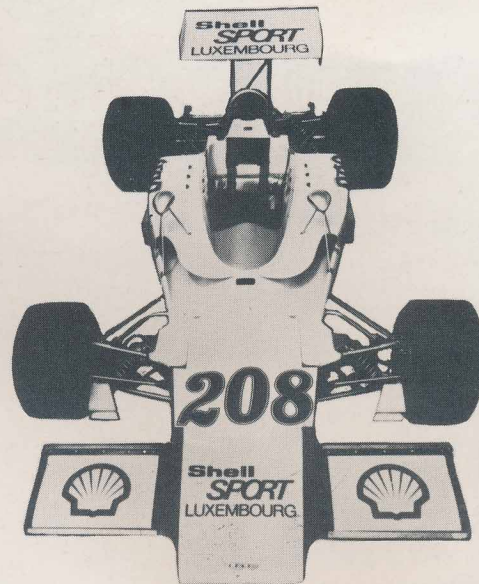
MOTOR RACING IS DANGEROUS AND PERSONS ATTENDING THE MEETING DO SO ENTIRELY AT THEIR OWN RISK.

It is a condition of admission that all persons having any connection with the promotion and/or organisation and/or conduct of the meeting, including the owners of the land, and the drivers and owners of the vehicles, are absolved from all liability arising out of accidents howsoever caused resulting in loss, damage and/or personal injury to spectators, pass or ticket holders or to their goods or vehicles.

ADVANCE BOOKINGS . . .

1. Advance Bookings may be made by post to Brands Hatch Circuit Limited, FREEPOST, Fawkham, Dartford, Kent DA3 8NG, or by personal callers at the circuit.
2. No money can be refunded on tickets once sold.

*Published by Brands Hatch Circuit Ltd., Fawkham, Nr. Dartford, Kent.
Printed by Taylor-Bloxham Ltd., Tyrrell Street, Leicester.*



ShellSPORT MADE 1973 A GREAT YEAR FOR MOTOR RACING

Yes 1973 has been a tremendous year for both competitors and spectators alike with a host of new ideas from

ShellSPORT to help put sport back into
motor racing – and how!

With sponsored events, celebrity races, and the ShellSPORT Luxembourg Formula 5000 Team establishing itself as a contender with Formula 1 for top motor racing honours this has been one of the most exciting seasons for many years. ShellSPORT'S involvement in motor racing means a lot more entertainment and excitement for everyone, and that's the way it should be.

**Shell
SPORT** Together lets make motor racing
Britain's most exciting sport