

Monday 25th May 1970

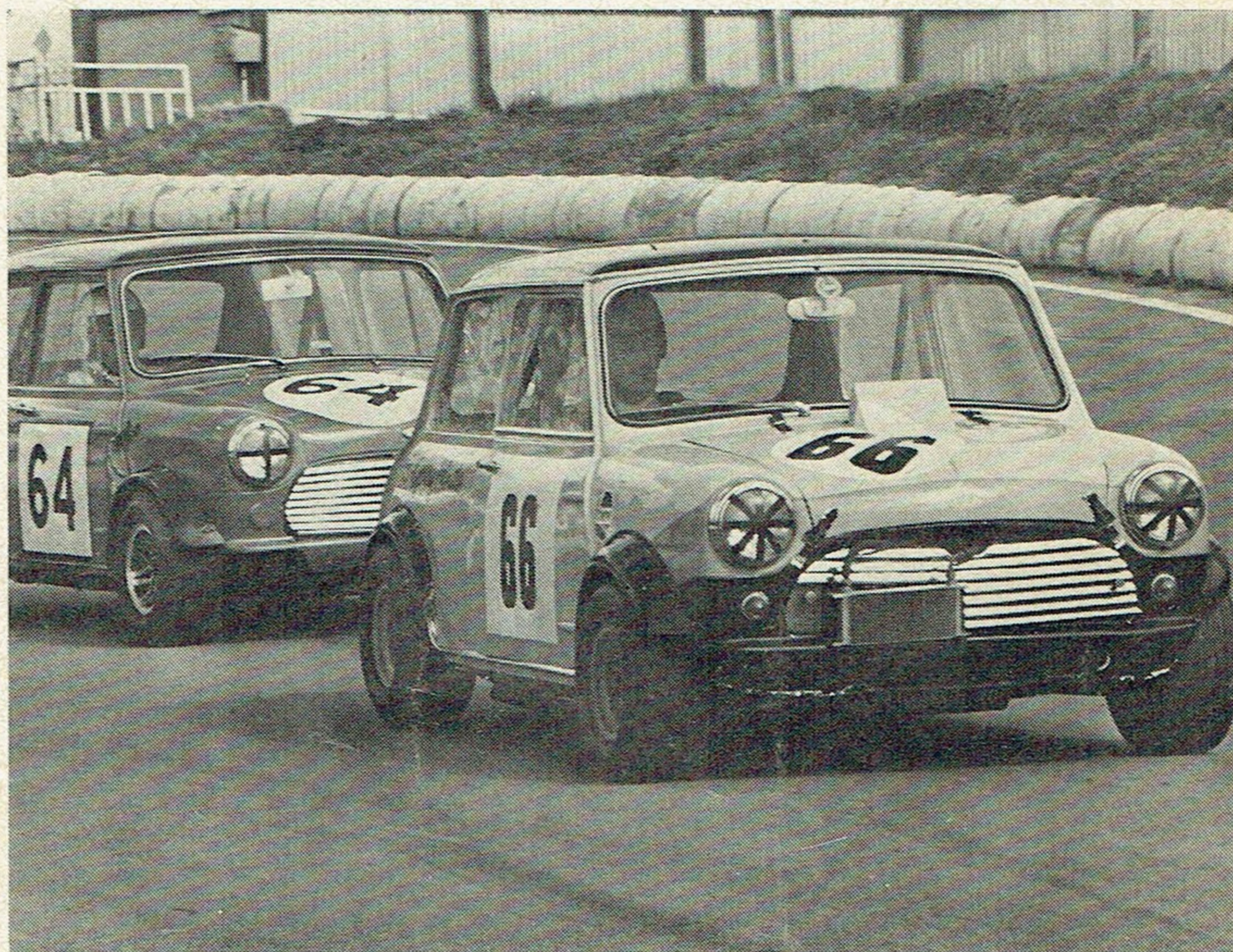
Programme 2s.

CASTLE COMBE

Championship Car Races



Organised by the Hagley & D.L.C.C. Ltd.
for Castle Combe Circuit Ltd.



Don Kettleborough, who is down to drive today in the Hepolite-Glacier Saloon Car Championship round, presses a similar Cooper 'S' during a recent race.

(Photograph by Gerry Stream)

For the Attention of Spectators

Please do not leave litter about the grounds — take it with you.

Remember to drive with care and caution when leaving the ground.

To safeguard both competitors and public — **dogs are not admitted unless kept on a leash. This is most important.**

Prohibited Area Notices: The public are not permitted in the areas where these notices are displayed. The fences are there for protection, and any person or persons found trespassing, or wilfully damaging trees, fences, etc., will be prosecuted by Castle Combe Circuit Ltd.

Condition of Admission

NOTICE:

WARNING TO THE PUBLIC — MOTOR RACING IS DANGEROUS.

Spectators attending the track do so entirely at their own risk. It is a condition of admission that the Castle Combe Circuit Ltd. and all persons having any connection with the promotion and/or organisation and/or conduct of the meeting (including the drivers and owners of vehicles and passengers in vehicles) are absolved from all responsibility and liability whatsoever from negligence, or by accident causing loss, damage or personal injury to spectators or tickets holders, or to their goods or vehicles.

Postponement of the Meeting

The Club reserves the right to postpone or cancel the meeting.

Flag Signals

UNION JACK	Start.
RED	Stop immediately.
YELLOW (Waved)	Great danger: prepare to stop: no overtaking.
YELLOW (Motionless)	Take care: danger: no overtaking.
BLUE WAVED	Another competitor is trying to overtake.
BLUE (Motionless)	Another competitor is following closely.
YELLOW WITH RED STRIPES	Oil on the course.
WHITE	Ambulance or service car on the course.
BLACK (With Number)	Car with that number must call into the pits.
BLACK and WHITE Chequered	End of race.

This meeting is promoted by

MOTOR CIRCUIT DEVELOPMENTS LTD.

Managing Director: John Webb

Director and General Manager: C. J. D. Lowe

CASTLE COMBE CIRCUIT LTD., CHIPPENHAM, WILTSHIRE

Castle Combe 278

ORGANISERS OF THE MEETING

A Restricted Race Meeting organised by Hagley and District Light Car Club Ltd., and held under R.A.C. Permit No. RS.6056, the General Competition Rules and the Standing Supplementary Regulations of the R.A.C. and the Additional Supplementary Regulations issued by the organising Club. Open to fully paid up Members of the Organising Club, and the following invited clubs:

Aston Martin Owners Club, Austin Healey Club, Centres of British Automobile Racing Club Ltd., British Racing & Sports Car Club Ltd., Bugatti Owners Club, Jaguar Drivers Club Ltd., M.G. Car Club, Monoposto Racing Club, Morgan 4/4 Club, Mini Se7en Club, 750 Motor Club, M.M.E.C.

OFFICIALS OF THE MEETING

Stewards

For the R.A.C.

For the H. and D.L.C.C. Ltd.

D. O'M. Taylor, Esq.

J. F. May, Esq.

Clerk of the Course:

Max Trimble, Esq.

Assistant Clerk of the Course

Bonar Smith, Esq.

Chief Marshal:

J. H. Gladders, Esq.

Chief Observer and Flag Marshal

R. N. Embley, Esq.

Chief Fire Precautions Officer

J. H. Gladders, Esq.

Chief Timekeeper

V. C. Anstice

Chief Scrutineer:

G. Hartley-Smith, Esq.

Chief Medical Officer

Dr. R. S. Parkin

Public Address Commentators

N. Cory, Esq.

M. Bassett, Esq.

Chief Paddock Marshal

Mrs. J. Roberts

Starter

Roy Bushell, Esq.

Chief Start Line Marshal

D. Llewelyn, Esq.

Secretary of the Meeting

J. H. Dorsett, Esq.,

Alpha Business Services,
Mart Lane, Stourport-on-Severn,
Worcs.

Tel.: Stourport 4498

Ambulance and First Aid Services

The St. John Ambulance Association

Breakdown Equipment

V.M.W. Motors (Coalpit Heath) Ltd.,
Coalpit Heath, Nr. Bristol.

The Folly Filling Station,
Yatton Keynell,

Nr. Chippenham, Wilts.

The Circuit Garage,
Castle Combe.

ACKNOWLEDGEMENTS

The Hagley and District Light Car Club wishes to acknowledge the valuable assistance which has been very kindly provided by the following donors, and without which this event would not have been possible:

Archibald Kenrick & Sons Ltd., West Bromwich, Staffs., D. F. Smith & Co. Ltd., Stourport-on-Severn, The Wiltshire Constabulary, all Advertisers in this Programme, and the donors of the Race Trophies, Archibald Kenrick & Sons Ltd., S. J. Hunt, Esq., E. D. Jones, Esq., A. L. Robbins, Esq., D. A. Benson, Esq., S. P. Neal, Esq., and the Forge Garage, Hagley. Course car by Jensen Motors Ltd.

PROGRAMME COPYRIGHT

All literary matter in this Programme, including the list of competitors and their racing numbers is copyright, and any person found making illegal use thereof will be prosecuted.

The Club accepts entries and drivers' nominations in good faith and every effort is made to adhere to the printed programme. The Club, however, cannot accept responsibility for the failure of any driver or car to appear.

Although every endeavour is made to avoid inaccuracies in the descriptions of competing cars, the Club accepts no responsibility for any that may occur.

The Club reserves the right to postpone, abandon, or cancel the meeting or any part thereof.

DOGS — IN THE INTERESTS OF SAFETY, DOGS AND OTHER ANIMALS ARE NOT ADMITTED TO THE COURSE.

EVENT I

Start: 13.30 hrs.

10 Laps

The Talbot Trophy Race

FOR CLUBMANS FORMULA CARS

Being a qualifying round of the 1970 Clubmans Lotus Seven Championship and open to all cars complying with R.A.C. approved Clubmans Formula in two classes
(a) 1001 c.c. to 1600 c.c. and (b) up to 1000 c.c.

Class (a) — 1001 c.c. to 1600 c.c.

No.	Entrant/Driver	Car	Colour	Engine	c.c.
1	David Rudkin ...	Lotus 7	Red	Ford	1498
2	Peter Valdar ...	Lotus 3/7	Red	Ford	1600
3	Newbridge Racing / Stuart Cox ...	U2 Mk. 8	Blue	Ford	1498
4	Ron Livingstone ...	Lotus 7	Blue/Silver	Ford 120E	1594
5	Mike Bigland/Peter O'Sullivan ...	Talus 1	Blue	Ford	1600
6	Tony Walker ...	Lotus 7	Blue	Ford	1558
7	Peter Chattin ...	Lotus 7	White	Ford	1600
8	S. J. Turner ...	Lotus 7T	Orange	Ford	1598
9	Robert Cochran ...	Bladon BRL 3	Blue	Ford	1600
10	Frank Aston ...	Landar	Yellow	B.M.C.	1300
11	Malcolm Roberts ...	RH. 7 Mk. 1	Red/Black	Ford	1600

Class (b) — Up to 1000 c.c.

12	Philip Latham ...	Lotus 7	Green	Ford	1000
14	Timothy Horton ...	Lotus 7	Blue	Ford	997
15	Barry Flegg ...	Lotus 7Y	Silver	Ford	998
16	Peter Froude ...	Lotus 7	Blue	Ford	1000

RESULTS:

OVERALL 1st..... 2nd..... 3rd..... Winner's Time..... Speed.....

CLASS (a) 1st..... 2nd..... 3rd..... Winner's Time..... Speed.....

Fastest Lap: Car No..... Time..... Speed.....

CLASS (b) 1st..... 2nd..... 3rd..... Winner's Time..... Speed.....

Fastest Lap: Car No..... Time..... Speed.....



Roy Pierpoint had his first victory with the Bill Shaw-entered 4½ litre Rover at Castle Combe two weeks ago. It is hoped he will be here again today.

(Photograph by Gerry Stream)

Seven races and plenty of variety

Will Colin Vandervell continue his winning streak?

For this Bank Holiday Monday meeting the Hagley and District Light Car Club have certainly laid on a very varied programme that promises a full afternoon's exciting motor racing.

If previous Formula Ford dices here this season are anything to go by, then the race for the Les Leston FF Championship should be a cracker. There have been two earlier rounds of this Championship at Castle Combe, and on each occasion Colin Vandervell, son of the late Tony Vandervell, of Vanwall fame, has come out on top. Indeed, Colin has beaten the opposition in all rounds to date (without taking into account yesterday's Les Leston race at Brands Hatch). And he's down to drive again today with his immaculately prepared and very quick Merlyn Mk. IIA which he always pilots with tremendous dash and determination. Colin won his heat here on May 9, and then went on to trounce the opposition in the final, setting a new Formula Ford lap record in the process, when he got round in 1 min. 10.4 sec., 94.09 m.p.h.

Will he have it all his own way again this afternoon? Well, he's got some pretty tough opposition to beat. There's Geddes Yeates, for example, with another Merlyn Mk. IIA entered by the Jim Russell Racing Drivers School. At that May 9th meeting Geddes won his heat and was second to Colin in

the final. With two second places and two thirds from the first five Les Leston rounds, he lies second in the Championship, and if he fails to topple the flying Vandervell from his perch it won't be for the want of trying.

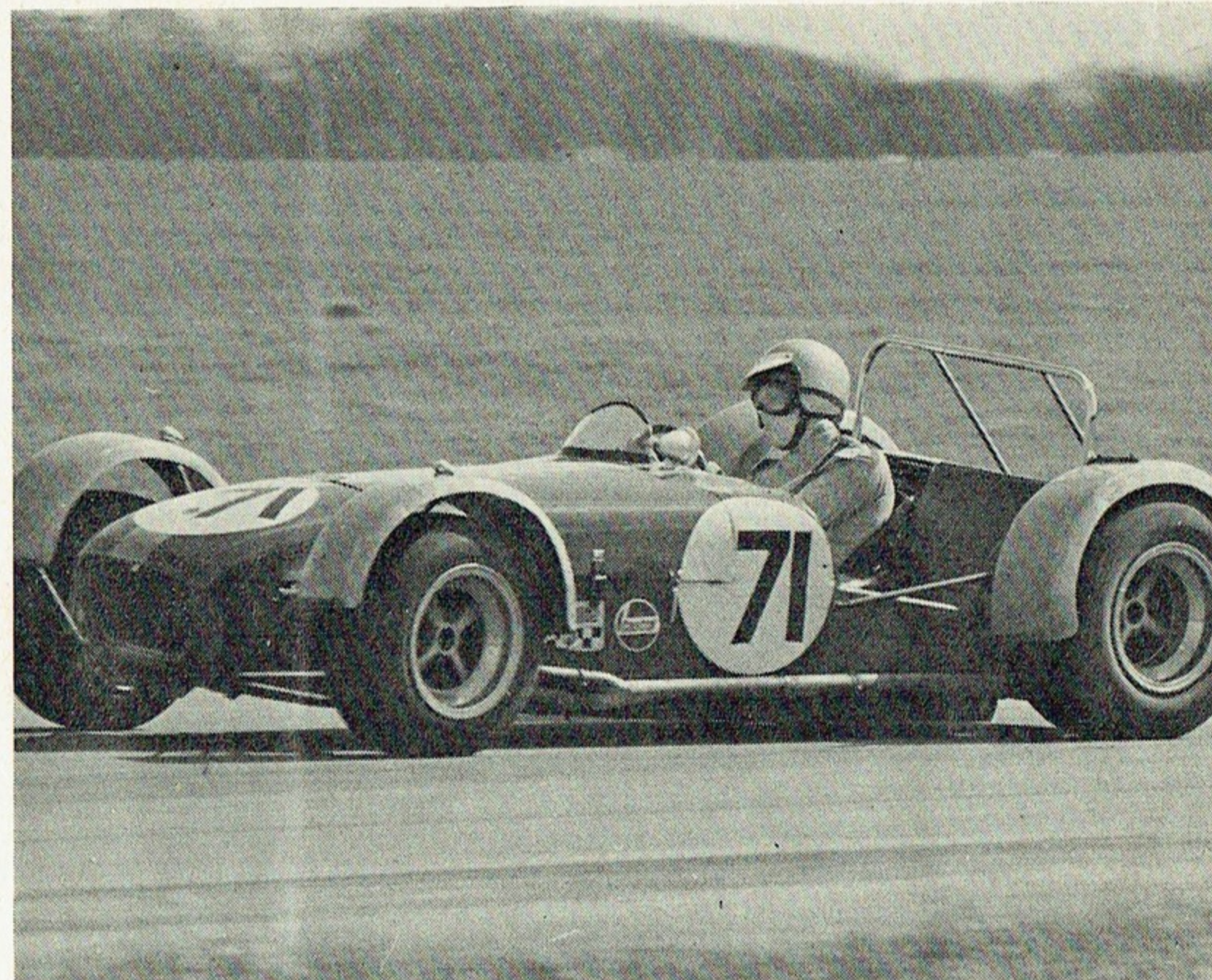
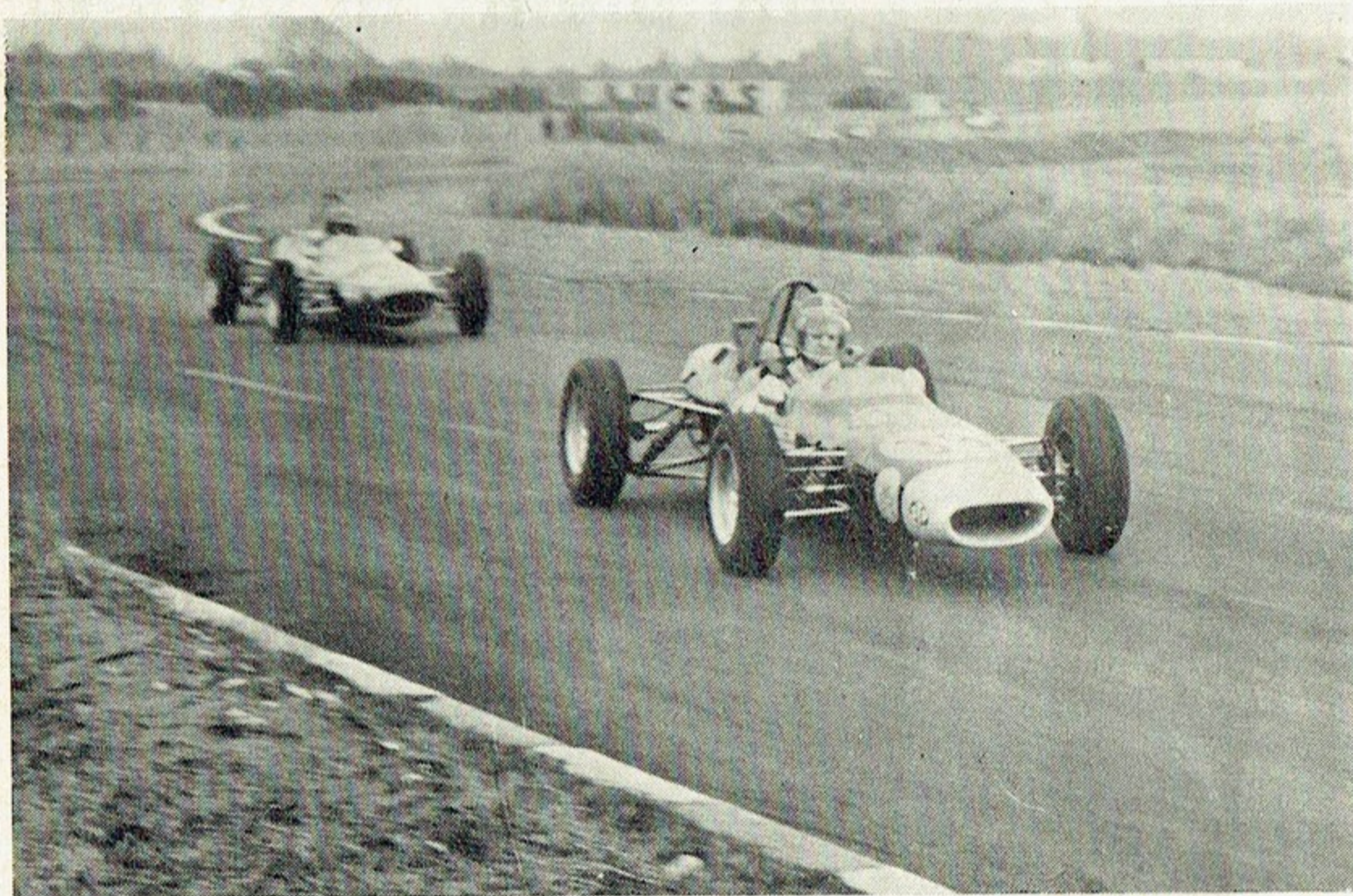
If you follow the form book, then you will probably regard Mo Harness as another good prospect with his Lotus 61M. He's currently in a lowly position in the Championship table, but he's now in the groove and his third place here on May 9th demonstrated that he feels very much at home on this circuit.

There's a host of other good drivers and cars as well. Such as John Hamilton with his Merlyn Mk. 17, Peter Hull with a similar model, Vern Schuppan with an Alexis Mk 18, and Brazilian Fritz Jordan who is now beginning to get to grips with his Lotus 61M.

There is always a very natural tendency for a consistent winner to come under extreme fire from his rivals, and no doubt at least half a dozen drivers will be setting their sights on beating Colin Vandervell to the chequered flag.

The programme also includes a round of the very successful Hepolite-Glacier Saloon Car Championship, and as usual the number of entries has meant that this will have to be run in two parts — one for the up-to-1,000 c.c. machinery and the other for the weightier metal.

In the "nipper" class the odds must be on Roger Williamson with his very rapid Ford Anglia, for he has already scooped maximum points in five of the eight rounds held so far. Where will the opposition come from? Stuart Baird could provide the answer with his Mini, but other tough rivals include John Turner with a Hillman Imp, Simon Ridge with his Mini, Mike Darrieulat with a Talon Mini, and Jim Balmer in his Cooper 'S'.



Peter Valder should be racing today with his Lotus 7. Good thing about these Clubman's Formula cars is that you can see the driver working.

(Photograph by John Gaisford)

There are two classes represented in the other Hepolite-Glacier race — 1,001-1,300 c.c. and the over-1,300 cars, and inevitably all eyes will be on Rob Mason to take the smaller class with his Don Moore-entered Cooper 'S'. He's having a good run this year with a very well prepared machine, but don't forget that John Watts was third, behind Rob Mason, with his Cooper 'S' at the May 9th meeting here.

At the time of writing the big class has a small representation, though the organisers were still hoping to see Roy Pierpoint turn up with the 4½ litre Rover with which he scored a victory here a fortnight ago.

There's also plenty of good material in the other events. Monopostos are always popular at Castle Combe, and the organisers have had to run this category in two capacity classes so that everyone can get a race. Then there's a race for Clubmans Sports Cars, and a really mixed bag in the Formule Libre event. Not easy to pick the winner in the Libre race, but Alain de Cadenet should be up with the front runners with his beautifully prepared Porsche 908.

So there you are. Seven races and plenty of dicing in prospect. Let's hope you enjoy your holiday racing.

Colin Vandervell is this year's star in the Les Leston Formula Ford Championship. On both earlier appearances here with his Merlyn Mk. 11A, on March 30th and May 9th, he was a clear winner.
(Photograph by Gerry Stream)

EVENT 2 **Start 14.00 hrs.** **10 Laps**

The Forge Trophy Race

For Monoposto Racing Cars up to 1000 c.c. (including 1172 c.c. SV Ford Engines modified in any form). Entries restricted to members of the M.R.C. and H.D.L.C.C.

No.	Entrant/Driver	Car	Colour	Engine	c.c.
20	John Clarke J.M.C.	Blue	Ford	997
21	David Wilson Caravelle	Blue	Ford	997
22	Graham Bowskill Cooper 72	Yellow	B.M.C.	999
23	Alan Gorsuch Nova Lotus	Blue	Cosworth	997
24	Peter Coulborn Vesey F3	Green	Holbay	997
25	John Wood Cooper T76	Green	Ford	997
26	David Pullen Cooper T76	Green	B.M.C.	999
27	Alan Baker Macon	Red	Ford	997
28	Alan Joy Brabham BT15	Yellow	M.A.E.	997
29	Peter Danby Jomo/Ford	Silver	Ford	997
30	Colin Beckwith Lotus F3	Green	Cosworth	997

RESULTS:

1st 2nd 3rd
 4th 5th 6th
 Winner's Time Speed mph
 Fastest Lap: Car No. Time Speed mph

EVENT 3 **Start 14.30 hrs.** **10 Laps**

The Hepolite-Glacier Saloon Car Race

Being a qualifying round of the 1970 Hepolite-Glacier Saloon Car Championship for cars up to 1000 c.c.

No.	Entrant/Driver	Car	Colour	Engine	c.c.
33	Pino Scarpino Cooper 'S'	Orange	B.M.C.	999
34	Chris Dewing Cooper 'S'	Blue/White	B.M.C.	999
35	David Angless Miglia Mini	Red/White	B.M.C.	998
36	The Instanter Group/R. E. Jockel Cooper 'S'	Blue/Yellow	B.M.C.	999
37	Stuart Baird Morris Mini	Yellow	B.M.C.	999
38	Jim Balmer Cooper 'S'	Red/White	B.M.C.	999
39	Guys Automobile Eng./John Turner Hillman Imp	Yellow/Blue	Rootes	998
40	Jeff Ward Hillman Imp	Black/Yellow	Rootes	998
41	Jenny Williams Cooper 'S'	Black/Yellow	B.M.C.	1000
42	Roger Williamson Ford Anglia	Red/Yellow	Ford	997
43	Mike Darrieulat Talon Mini	Black/Orange	B.M.C.	999
44	A. Shaw Cooper 'S'	Green/White	B.M.C.	999
45	Automex Motor Co. Ltd./Simon Ridge B.L.M.C. Mini	Blue/White	B.L.M.C.	992
46	A. P. White Ford Anglia	White/Orange	Ford	997
47	Michael Clarke Mini Cooper	Red/Black	B.M.C.	970
48	Michael Hannan Austin Cooper	Green	B.M.C.	1000
49	John Thompson Star Mini	Blue/Yellow	B.M.C.	999
50	Terry Porter Austin Mini	Red/Black	B.M.C.	970
51	Gordon Nevill Cooper 'S'	Red	B.M.C.	999
52	Janspeed Engineering/Graham Ayres Cooper 'S'	Red/Black	B.M.C.	999
Reserves					
53	Bob Wiltshire Morris Mini	Silver/White	M.B.C.	850
54	Barrie Swan Ford Escort	Green	Holbay F3	997
32	Tony Pearce Mini Clubman	White/Yellow	B.L.M.C.	984

RESULTS:

1st 2nd 3rd Winner's Time Speed
 1st 2nd 3rd Winner's Time Speed
 Fastest Lap: Car No. Time Speed

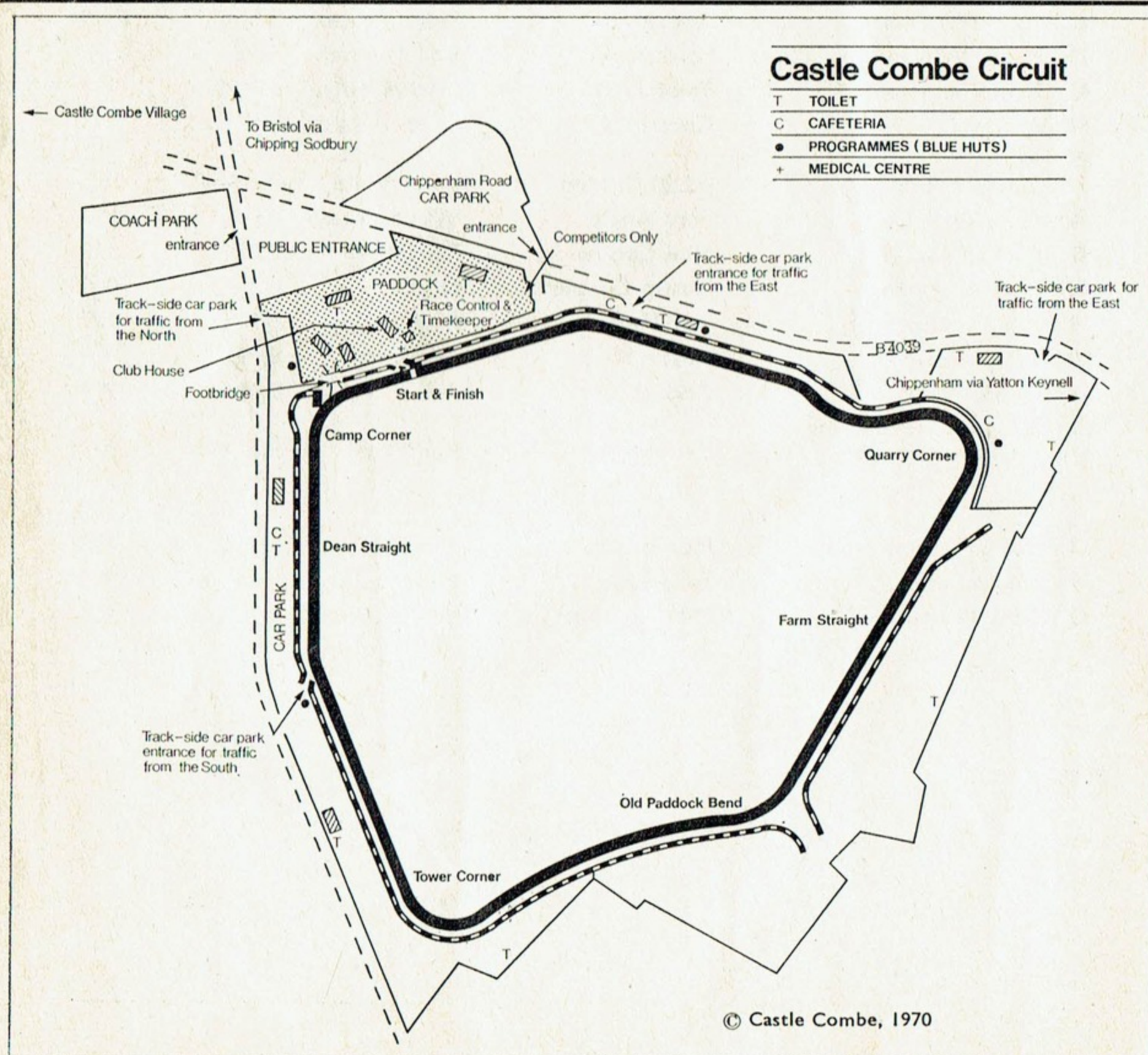
Hepolite-Glacier Saloon Car Championship

A. E. Auto Parts Ltd., of Bradford, the marketing company responsible for sales throughout the world of Hepolite and Glacier replacement engine components, are sponsoring a championship for saloon cars at six circuits this year. The winner receives £100 and the winners of the other two classes get £50 each. Second in each class is worth £20, with £10 for third in each class.

The Hepolite-Glacier Saloon Car Championship comprises 20 races at six circuits on the following dates: Castle Combe: May 9, May 25 and July 25; Brands Hatch: March 8, March 30, May 3, June 7, August 2, September 27 and November 29; Mallory Park: April 19 and August 31; Mondello Park: March 17; Oulton Park: March 14, March 27, May 2, August 29 and September 19; Snetterton: June 28th and October 11. Points are allocated to the drivers on the basis of 9 points for a class win, 6 points for second in class and 4 points for third and prize money is paid at the rate of £2 per point. A competitor's best 14 results count towards the championship.

Points Position

Up to 1000 c.c.			points	1001-1300 c.c.			points
1	Roger Williamson	...	45	1	Rob Mason	...	39
2	Barry Swan	...	16	2	Mike Kearon	...	12
3	Stuart Baird	...	14	3	Mike Bundy	...	10
Over 1300 c.c.			points				
1	Tony Sugden	...	22				
2	John Myerscough	...	18				
	Dave Brodie	...	18				



EVENT 4

Start: 15.00 hrs.

10 Laps

The Eric D. Jones Trophy Race

For Monoposto Racing Cars over 1001 c.c. and up to and including 1500 c.c. A qualifying round of the 1970 Monoposto Championship.

No.	Entrant/Driver	Car	Colour	Engine	c.c.
55	Trevor Scarratt ...	Lola Mk. 5A	Yellow/Black	Ford	1500
56	G. F. Meharey ...	Cooper T56	Grey/Green	Ford	1498
57	G. B. Toft ...	Anco	Blue/Yellow	Ford	1500
58	Andrew Stevens ...	Lotus 22/31	Magenta	Ford	1498
59	W. R. Heaton-Rudd ...	Moonraker	Blue/Yellow	Ford	1498
60	Terence Hird ...	Cooper T51	Green	Ford	1500
61	Robin Strange ...	Gemini 4A	Red/White	Ford	1500
62	Roy Picton ...	Cooper T67	Green/Red	Ford	1430
63	Ian Stronach ...	Concorde Mono	Red/White	Ford	1498
64	Paul Henry ...	Brabham BT6	Green	Ford	1500
65	J. W. Chambers ...	Chamox-Ford	Blue	Ford	1500
66	Derrick Colvin ...	Lola 5B	Green	Ford	1498
67	Bob Mitchell ...	Apex Mk. 3	Brown	Ford	1500
68	Jim Yardley ...	Beagle	Black/Orange	Ford	1498
69	Maurice Ogier ...	Wellanier	Green	Ford	1498
70	Kenneth Jones ...	Cooper T67	Yellow	Ford	1198
71	Paul Weldon ...	Brabham BT15	Red/White	Ford	1500
72	Chris Featherstone ...	Lola T60	Blue/Orange	Ford	1498
73					
74					

RESULTS:

1st 2nd 3rd

4th 5th 6th

Winner's Time Speed mph

Fastest Lap: Car No. Time Speed mph

EVENT 5 **Start: 15.30 hrs.** **10 Laps**

The Hepolite-Glacier Saloon Car Race

Being a qualifying round of the 1970 Hepolite-Glacier Saloon Car Championship
in two classes (a) over 1300 c.c. and (b) 1001 c.c. to 1300 c.c.

No.	Entrant/Driver	Car	Colour	Engine	c.c.
Class (a) — Over 1300 c.c.					
77	Intertech Steering Wheels / Philip Danby	Lawrencetune Ford Escort	Magenta	Martin V8	2846
78	Roger Hickman/Roy Bushell	Ford Escort	Blue	Ford	1588
79	Dave Rogers	Ford Anglia	White	Martin	1865
80	Graham Connolly	Ford Cortina	Green	Ford	1650
81					
82					
83					
Class (b) — 1001 c.c. to 1300 c.c.					
84	Don More/Rob Mason	Cooper 'S'	Green/White	B.M.C.	1275
85	David Depper	Cooper 'S'	White	B.M.C.	1293
86	Don Kettleborough	Cooper 'S'	Red/Blue	B.M.C.	1293
87	William Abbott	Cooper 'S'	Green/White	B.M.C.	1293
88	John Coundley	Cooper 'S'	Green/White	B.M.C.	1293
89	Tony Dealey	Cooper 'S'	Black/Yellow	B.M.C.	1293
90	Ivor Hardy	Cooper 'S'	Blue/White	B.M.C.	1293
91	Kentish Times/Mick Jones	Cooper 'S'	Yellow	B.M.C.	1293
92	J. Conway	Ford Anglia	White	Holbay Ford	1297
93	Mario Goncalves	Cooper 'S'	Black/Orange	B.M.C.	1293
94	Janspeed Engineering / John Watts	Cooper 'S'	White	B.M.C.	1293
95	Mike Kearon	Cooper 'S'	White/Black	B.M.C.	1293
96	Desmond Gibb	Cooper 'S'	Red/Black	B.M.C.	1293
97	Carmen Curlers/David Minchin	Cooper 'S'	White	Sigma	1293
98	Frank Aston	Cooper 'S'	Blue	B.M.C.	1293

RESULTS:

OVERALL	1st	2nd	3rd	Winner's Time	Speed
CLASS (a)	1st	2nd	3rd	Winner's Time	Speed
	Fastest Lap: Car No.		Time	Speed	
CLASS (b)	1st	2nd	3rd	Winner's Time	Speed
	Fastest Lap: Car No.		Time	Speed	

EVENT 6 **Start: 16.00 hrs.** **15 Laps**

The Les Leston Formula Ford Race

Being a qualifying round of the 1970 Les Leston Formula Ford Championship.

No.	Entrant/Driver	Car	Colour	Engine	c.c.
100	Colin Vandervell	Merlyn Mk. 11A	Green/Yellow	Ford	1600
101	Jim Russell Racing/Geddes Yates	Merlyn Mk. 11A	Green/Yellow	Ford	1600
102	Mo Harness	Lotus 61M		Holbay	1600
103	P. & M. Racing Ltd./Paul Venskunas	Titan Mk. 4	Blue	PM Ford	1600
104	Team Selectro-Hawke/Bernard Vermilio	Hawke DL2A	Black	Ford	1600
105	P.M.R. Team Spudnut (USA) / Ross West	Titan Mk. 6	Black	Lucas	1600
106	Bob Evans	Merlyn	Black	Ford	1600
107	Racing Preparations Ltd./Chico Lameirao	Royale RP3	Yellow	Ford	1600
108	P. & M. Racing Ltd./Russell Wood	Merlyn Mk. 11A	Blue	PM Ford	1600
109	P. & M. Racing Ltd./Brian McGuire	Merlyn Mk. 11A	Orange	PM Ford	1600
110	A. R. G. Taylor/Rob Taylor	Alexis Hardy	White	Hardy	1600
111	John Hamilton	Merlyn Mk. 17	Red	Ford	1600
112	Vern Schuppan	Alexis Mk. 18	Blue	Ford	1600
113	Fritz Jordan	Lotus Mk. 61M	Green/Yellow	Holbay	1600
114	Jack Hemming	Nordic Mk. 2	Orange	Ford	1600
115	John Barker	Dulon	Red	Ford	1600
116	Buzz Buzaglo	Merlyn Mk. 11	Orange/Green	DC Tune	1600
117	A. E. Rouse	Dulon LD4C	Yellow	Ford	1600
118	Sonny Eade	March 708	Green	Ford	1600
119	Peter Hull	Merlyn Mk. 17	Blue	Ford	1600
120	Newbridge Racing Dev./Max Samuel-Camps	Titan Mk. 4	Blue/Red	Ford	1600
Reserves					
121	John Trevelyan	Merlyn Mk. 17	White	Ford	1600
122	Motor Racing Stables/Jiro Yoneyama	Titan Mk. 6	White	Ford	1600
123	Surrey Racing Cars/Terry Richards	Merlyn Mk. 11A	Grey	Ford	1600
124	Jonti Schofield	Hawke DL2	White	Ford	1600
142	Mike Spence Racing / Ian Taylor	March 701	Blue	Ford	1600
143	Team Selectro Hawke/Tony Watson	Hawke DL2A	Black	Ford	1600

RESULTS:

1st	2nd	3rd
4th	5th	6th
Winner's Time		Speed
Fastest Lap: Car No.		Time
		Speed

LES LESTON Formula Ford Championship

Les Leston, world famous ex-racing driver and motor accessory manufacturer, is once more sponsoring the Formula Ford Championship in 1970. The winner receives £100, with £75 for the second man and £50 for the third.

The Les Leston Formula Ford Championship comprises 23 rounds at eight circuits on the following dates: Castle Combe: March 30, May 9 and May 25; Brands Hatch: May 3, May 24, June 7, August 2, September 13, November 15 and December 27; Mallory Park: June 28, August 31 and October 18; Mondello Park: October 4; Oulton Park: April 18, July 4, September 26 and October 17; Silverstone: August 16; Snetterton: March 15, March 27 and July 26; Thruxton: June 14. Points are allocated on the basis of 9-6-4-3-2-1 for the first six places and prize money is paid at the rate of £4 per point. A competitor's best 15 scores count towards the championship.

Points Position

Points position prior to yesterday's Brands Hatch race.

			points
1	Colin Vandervell	...	45
2	Geddes Yeates	...	20
3	Bernard Vermilio	...	6
	Martin Grant-Peterkin	...	6
	Reg James	...	6
	Tony Roberts	...	6

SPONSORED MOTOR CIRCUIT DEVELOPMENTS CHAMPIONSHIPS & CHALLENGES

THE ROYAL AUTOMOBILE CLUB APPROVE NEW RULES FOR SMALL FIELDS

Motor Circuit Developments announce, with the approval of the R.A.C., the following rules in all sponsored M.C.D. championships and challenges where two or more classes of car are involved:

- (1) In a class with four or more starters, prize money (where applicable) and points shall be awarded as suggested in the original announcement of the competition.
- (2) In a class with three starters prize money (where applicable) and points shall be awarded to the first and second place winners only.
- (3) In a class with two starters prize money (where applicable) and points shall be awarded to the first place winner only.
- (4) In a class with one starter, prize money only (where applicable) shall be awarded and no points.

These rules to apply to all relevant meetings after May 10th, 1970, for the following series:

Atlantic Saloon Car Challenge
Hepolite-Glacier Saloon Car Championship
SKF Grand Touring Car Championship
STP Modified Sports Car Championship.

Townsend Thoresen take you to the four spot-on drive-off points for your continental motoring holiday.

Dover
CALAIS
Townsend "Free Enterprise" ferries up to 12 sailings a day.

Dover
ZEEBRUGGE
This Townsend service opens up the centre of Europe.

Southampton
LE HAVRE
Thoresen service ideal for France, Spain and Italy.

Southampton
CHERBOURG
Direct route to West Coast of France, and Spain.

Wherever you start from, wherever you go to in Spain, France, Belgium, Holland, Luxembourg, Germany, Austria, Switzerland, Italy - Townsend Thoresen Car Ferries offer you the right route and the most comprehensive and friendly service. From the moment you drive on we offer you the shipboard comfort and catering you want. Prices

at the shops and bars are most attractive. If you are camping, we hire you the right equipment at very reasonable rates (and subject to 25% reduction if you travel with us both ways). There are food packs, green card insurance benefits, the chance to hire holiday chalets in Belgium at keen prices and reduced rates for caravans on many sailings. Send the coupon now for full details and reservation forms for all four Townsend Thoresen routes.

**TOWNSEND
THORESEN**
CAR FERRIES TO EUROPE



Book through your own motoring organisation, or travel agent, or send to: Townsend Thoresen Car Ferries, P.O. Box 12, Dover.

Please send me a Townsend Thoresen brochure, reservation form and timetable. Also details of ☐ Camp hire ☐ Hire-a-chalet ☐ Food packs

Name.....

Address.....

EVENT 7 **Start 16.45 hrs.** **15 Laps**

The Kenrick Trophy Race

For Formula Libre Racing Cars, Grand Touring and Sports Racing Cars

SPONSORED BY ARCHIBALD KENRICK & SONS LTD.
makers of Shepherd castors and other fine hardware products

No.	Entrant/Driver	Car	Colour	Engine	c.c.
3	Newbridge Racing / Stuart Cox	U2 Mallock	Blue/Red	Ford	1498
14	Timothy Horton	Lotus 27	Green/Yellow	Ford	997
55	Trevor Scarratt	Lola Mk. 5A	Yellow/Black	Ford	1500
68	Jim Yardley	Beagle	Black/Orange	Ford	1498
69	Maurice Ogier	Wellanier	Green	Ford	1498
70	Kenneth Jones	Cooper T67	Yellow	Ford	1198
71	Paul Weldon	Brabham BT15	Red/Yellow	Ford	1500
72	Chris Featherstone	Lola T60	Blue/Orange	Ford	1498
110	A. R. G. Taylor/Rob Taylor	Alexis Hardy	White	Hardy	1500
121	John Trevelyan	Merlyn Mk. 17	White	Ford	1600
122	Motor Racing Stables/Jiro Yoneyama	Titan Mk. 6	White	Ford	1600
125	Ecurie Evergreen/Alain de Cadenet	Porsche 908	White	Porsche	2500
126	B.P.G. Engineering / Rod Pickering	Brabham BF18	Black/White	Lotus/Cosworth	1598
127	Brineton Engineering/Steve Thompson	Chevron B17	Blue/Yellow	Cosworth	1800
128	Fred Lyons	Dulon LD6	Blue	Lotus	1598
129	Newbridge Racing / Tony Broster	Dulon LD 9B	Red/White	Ford	1600
130	M. J. Butcher	Cooper	Blue/White	Ford	1600
131	Philip Guerola	Brabham BT 21A	Blue	Ford	1600
132	M. J. Cowburn	Anco	Blue	Ford	1600
133	Bob Marsland	Brabham BT 18/24	Blue	Cosworth	1594
Reserves					
134	R. T. Lancaster	JMC 4B	Blue	Ford	997
135	Roy Butler	M.G. 'B' GT	Silver	B.L.M.H.	1821
136	Arthur Collier	M.G. Midget	Red	M.G.	1300
137	Mario Goncalves / Peter Wood	Cooper 'S'	Black/Orange	B.M.C.	1293
138	Peter Coombs	Coombs GT	Green	Lotus/Ford	1598
139	Jeff Williams	Lotus 31X	Blue	Lotus t/c	1594
140	P. & M. Racing Ltd. / Jim Hardman	Lotus 41B	Tangerine	Cosworth	1600
141	Tiny Littler	Cooper 86	Green	Climax	2500
144	Jan Speed Engineering/John Dale	M.G. Midget	Yellow/Black	B.L.M.H.	1330
145	Harry Phillips	Jaguar 'E'	Red	Jaguar	4235

RESULTS:

1st.....	2nd.....	3rd.....
4th.....	5th.....	6th.....
Winner's Time.....	Speed.....	mph
Fastest Lap: Car No.....	Time.....	Speed.....
		mph

LAP RECORDS

CASTLE COMBE

1.84 mile

Class	Driver	c.c.	Car	Time (m/s)	Speed (mph)	Date
OUTRIGHT RECORD						
	Peter Gethin	4990	McLaren-Chevrolet M10B	:56.6	117.03	9/5/70
	Howden Ganley	4990	McLaren-Chevrolet M10B	:56.6	117.03	9/5/70

RACING CARS

Formula 3	Carlos Pace	997	Lotus-Ford 59	1:07.0	98.87	9/5/70
Formula 5000	Peter Gethin	4990	McLaren-Chevrolet M10B	:56.6	117.03	9/5/70
	Howden Ganley	4990	McLaren-Chevrolet M10B	:56.6	117.03	9/5/70
Formula Ford	Colin Vandervell	1599	Merlyn Mk 11A	1:10.4	94.09	9/5/70
Formula Vee	Mike Haysey	1285	Almac Vee Mk 2	1:15.6	87.62	18/4/70
	Mike Hayselden	1285	Monaco Vee	1:15.6	87.62	18/4/70
Formula 4	Keith Blaynee	654	Blaycar-BSA	1:17.4	85.58	9/9/67
Monoposto 1001-1500 c.c.	Jim Yardley	1498	Beagle-Ford	1:08.4	96.84	23/8/69
Monoposto up to 1000 c.c.	Eddie Heasell	997	Lotus-Ford 20	1:11.8	92.26	10/8/68
Historic pre-war	Peter Waller	1488	ERA B-type s/c	1:17.6	83.36	1/9/69
Historic post-war	Neil Corner	2992	Aston Martin DBR4/300	1:11.8	92.26	1/9/69
Formula Libre	Jim Moore	4727	Kincaid-Ford	1:04.4	102.86	25/5/68

SPORTS-RACING CARS

Over 1150 c.c.	Tony Lanfranchi	5967	Lola-Chevrolet T70 Mk. 2	1:04.8	102.20	21/5/66
Up to 1150 c.c.	John Hine	1098	Lotus-Ford 23	1:12.4	91.49	26/6/65
	John Burton	998	Ginetta-Cosworth G12	1:12.4	91.49	20/5/67
Formula F100	Ray Allen	1298	Royale-Ford RP4	1:15.2	88.09	30/3/70
Historic	Peter Skidmore	3781	Jaguar D-type	1:11.2	93.03	3/8/68

SPECIAL GRAND TOURING CARS

Over 2500 c.c.	Alistair Cowin	6998	McLaren-Chevrolet M6B	1:03.8	103.82	9/5/70
1601-2500 c.c.	Brian Martin	1991	Martin-BMW BM7	1:05.4	101.28	9/5/70
1151-1600 c.c.	Jeremy Lord	1594	Astra-Ford RNR1A	1:06.6	99.46	18/4/70
Up to 1150 c.c.	Martin Raymond	1148	Daren-Ford Mk 2	1:09.2	95.72	9/5/70

MODIFIED SPORTS CARS

Over 3000 c.c.	Tony Shaw	3781	Jaguar E-type	1:09.6	95.17	4/10/9
2001-3000 c.c.	Nigel Kerr	2967	Austin-Healey 3000	1:13.0	90.74	1/9/69
1151-2000 c.c.	Chris Boulter	1980	Marcos 1800	1:11.8	92.26	18/10/69
Up to 1150 c.c.	Alan Harvey	1139	Austin-Healey Sprite	1:15.0	88.32	4/10/69

CLUBMAN'S SPORTS CARS

1001-1600 c.c.	Bob Robertson	1599	RLR-Ford P1	1:09.0	96.00	4/10/69
	Jeremy Lord	1599	U2-Ford Mk. 8...	1:09.0	96.00	4/10/69
Up to 1000 c.c.	Deryck Cook	997	DRW-Ford Mk. 2	1:11.6	92.15	12/7/69
750 Formula	Noel Stanbury	598	Aftermath-Reliant	1:26.8	76.31	10/8/68
	Geoff Smith	747	JGS-Reliant	1:26.8	76.31	28/6/69
Formula 1200	Peter Rhodes	1198	Perigree-Ford C	1:15.0	88.32	28/6/69

SPECIAL SALOON CARS

Over 1300 c.c.	Terry Sanger	4727	Ford Falcon Sprint	1:11.8	92.26	4/10/69
1001-1300 c.c.	Richard Longman	1293	BLMC Mini-Cooper S	1:13.2	90.49	9/5/70
851-1000 c.c.	Ray Payne	998	Hillman Imp	1:15.4	87.85	4/10/69
	Peter Vann	984	BLMC Mini	1:15.4	87.85	4/10/69
Up to 850 c.c.	John Peachey-Austing	848	BLMC Mini	1:19.8	83.01	13/7/68
Mini-Seven Formula	Mick Osborne	848	BLMC Mini	1:22.6	80.19	28/6/69

CASTLE COMBE SPEED TABLE

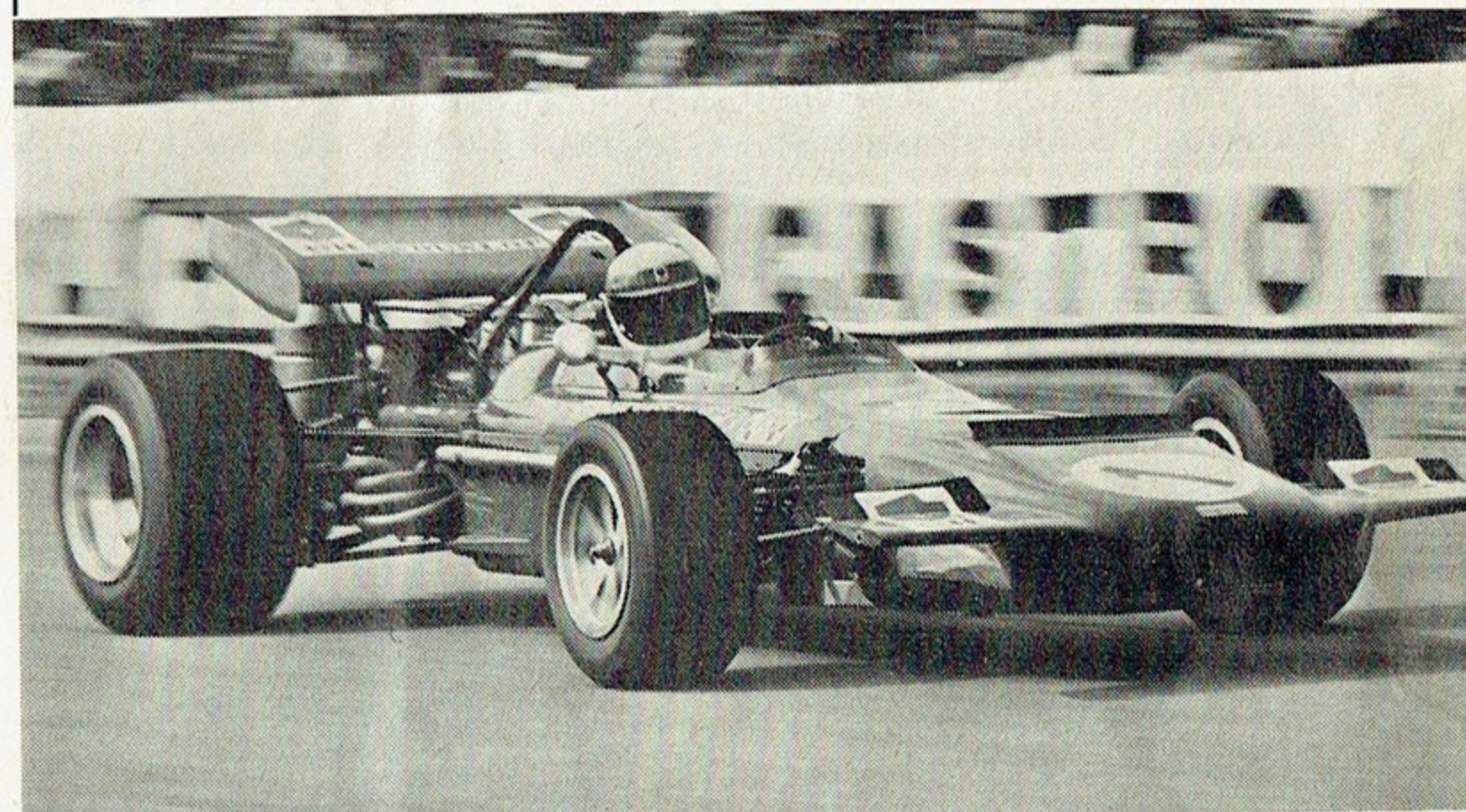
1 lap = 1.84 miles

Lap Time	Speed	Lap Time	Speed	Lap Time	Speed	Lap Time	Speed
m. s.	m.p.h.	m. s.	m.p.h.	m. s.	m.p.h.	m. s.	m.p.h.
55	120.44	1 05.2	101.60	1 15.4	87.85	1 25.6	77.38
.2	120.00	.4	101.28	.6	87.62	.8	77.20
.4	119.57	.6	100.98	.8	87.39	1 26	77.02
.6	119.14	.8	100.68	1 16	87.16	.2	76.84
.8	118.71	1 06	100.36	.2	86.93	.4	76.67
56	118.29	.2	100.06	.4	86.70	.6	76.49
.2	117.86	.4	99.76	.6	86.48	.8	76.31
.4	117.45	.6	99.46	.8	86.25	1 27	76.14
.6	117.03	.8	99.16	1 17	86.03	.2	75.96
.8	116.62	1 07	98.87	.2	85.80	.4	75.79
57	116.21	.2	98.57	.4	85.58	.6	75.62
.2	115.80	.4	98.28	.6	85.36	.8	75.44
.4	115.40	.6	97.99	.8	85.14	1 28	75.27
.6	115.00	.8	97.70	1 18	84.92	.2	75.10
.8	114.60	1 08	97.41	.2	84.71	.4	74.93
58	114.21	.2	97.13	.4	84.49	.6	74.76
.2	113.81	.4	96.84	.6	84.27	.8	74.59
.4	113.42	.6	96.56	.8	84.06	1 29	74.43
.6	113.04	.8	96.28	1 19	83.85	.2	74.26
.8	112.65	1 09	96.00	.2	83.64	.4	74.09
59	112.27	.2	95.72	.4	83.43	.6	73.93
.2	111.89	.4	95.45	.6	83.22	.8	73.76
.4	111.52	.6	95.17	.8	83.01	1 30	73.60
.6	111.14	.8	94.90	1 20	82.80	.2	73.44
.8	110.77	1 10	94.63	.2	82.59	.4	73.27
1 00	110.40	.2	94.36	.4	82.39	.6	73.11
.2	110.03	.4	94.09	.6	82.18	.8	72.95
.4	109.67	.6	93.82	.8	81.98	1 31	72.79
.6	109.31	.8	93.56	1 21	81.78	.2	72.63
.8	108.95	1 11	93.30	.2	81.58	.4	72.47
1 01	108.59	.2	93.03	.4	81.38	.6	72.31
.2	108.24	.4	92.77	.6	81.18	1 31.8	72.16
.4	107.88	.6	92.51	.8	80.98	1 32	72.00
.6	107.53	.8	92.26	1 22	80.78	.2	71.84
.8	107.18	1 12	92.00	.2	80.58	.4	71.69
1 02	106.84	.2	91.75	.4	80.39	.6	71.53
.2	106.50	.4	91.49	.6	80.19	.8	71.38
.4	106.15	.6	91.24	.8	80.00	1 33	71.23
.6	105.81	.8	90.99	1 23	79.81	.2	71.07
.8	105.48	1 13	90.74	.2	79.62	.4	70.92
1 03	105.14	.2	90.49	.4	79.42	.6	70.77
.2	104.81	.4	90.25	.6	79.23	.8	70.62
.4	104.48	.6	90.00	.8	79.05	1 34	70.47
.6	104.15	.8	89.76	1 24	78.86	.2	70.32
.8	103.82	1 14	89.51	.2	78.67	.4	70.17
1 04	103.50	.2	89.27	.4	78.48	.6	70.02
.2	103.18	.4	89.03	.6	78.30	.8	69.87
.4	102.86	.6	88.79	.8	78.11	1 35	69.73
.6	102.54	.8	88.56	1 25	77.93	.2	69.58
.8	102.22	1 15	88.32	.2	77.75	.4	69.43
1 05	101.91	.2	88.09	.4	77.56	.6	69.29

OUTRIGHT CIRCUIT LAP RECORD

	Time	m.p.h.
	m. s.	
Peter Gethin (McLaren-Chevrolet M10B)	56.6	117.03
Howden Ganley (McLaren-Chevrolet M10B)		

THIS IS THE BIG ONE In The British Racing Calendar



Jackie Stewart, driving Ken Tyrrell's March 701, won the dramatic Race of Champions here on March 22. Will he do it again in the RAC British Grand Prix on Saturday, July 18? He'll have a tough job, for the world champion will be up against every top Formula 1 driver and every top GP car in this seventh round of the World Championship.

Cars like the Brabham BT33 . . . BRM P153 . . . Ferrari 312B . . . Lotus 72 . . . Matra MS120 . . . McLaren M14A . . . de Tomaso . . .

Drivers like Jack Brabham . . . Jochen Rindt . . . Jack Ickx . . . Denny Hulme . . . Graham Hill . . . Jean-Pierre Beltoise . . . John Surtees . . . Jo Siffert . . . Chris Amon . . . Pedro Rodriguez . . . Jack Oliver . . . Mario Andretti . . . In fact, the lot!

MAKE SURE YOU'RE AT BRANDS HATCH ON JULY 18 FOR THE

RAC BRITISH GRAND PRIX

(Sponsored by the Daily Mail)

To: BRANDS HATCH
CIRCUIT LTD.,
Fawkham, near Dartford,
Kent.

Please send me an advance booking form
for the RAC British Grand Prix.

NAME

ADDRESS

(block letters please)

YOU CAN'T MISS

AEROSIGNS

AT ALL CIRCUITS

Get the facts from — AEROSIGNS (London) LIMITED,
Marlborough Hall, Lassell St., Greenwich, S.E.10.

Telephone: 01 - 858 4331

For full details of advertising

in Castle Combe Programmes

write or telephone:

MACERSPACE

23 Goodwood Close

Hoddesdon, Herts.

Tel: Hoddesdon 68315/6

HOW FAST WILL IT GO?

Did you know that practising facilities exist at Castle Combe for members of car and motor-cycle clubs to test their machines every Thursday between 10 a.m. and 5 p.m. (weather permitting).

The cost is 15/- per half-hour for cars and sidecars and 10/- for motor-cycles. No advance booking is necessary and enquiries can be made to Castle Combe 395.

You will need a current driving licence, a crash helmet and, if you are a motor-cyclist, leathers or a Barbour suit, goggles and gloves. Drivers of open cars will also need either goggles or a vizor, and all headlamps must be taped.

The circuit is also available for exclusive bookings on Fridays (half or whole day). Charges on enquiry to Castle Combe 278.

CASTLE COMBE 1970 FIXTURES

DATE	EVENT	ORGANISER	EVENTS	CHARGES
13 June	Clubman's Car Races	BRSCC	FL, FF, F100, T, PS, C	10/-A, 4/-C, 4/-P
27 June	Clubman's Car Races	750 MC	FL, FF, F100, T, 750, 1200, Mono. Hist.	10/-A, 4/-C, 4/-P
11 July	Clubman's Car Races	BARC	FL, FF, F100, T, PS, C	10/-A, 4/-C, 4/-P
18 July	Motor Cycle Races	Wessex ACU	All Classes	8/-A, CF
25 July	Championship Car Races	BRSCC	FL, FF, F100, T, PS	10/-A, 4/-C, 4/-P
15 Aug.	Clubman's Car Races	Monoposto CC	FL, FF, T, F100, 1200, 750, Mono.	10/-A, 4/-C, 4/-P
31 Aug.	Championship Car Races	BRSCC	FL, FF, T, PS	10/-A, 4/-C, 4/-P
12 Sept.	Clubman's Car Races	M.G. CC	FL, FF, F100, T, PS	10/-A, 4/-C, 4/-P
19 Sept.	Sprint Meeting	CSMA	T, GT, S	4/-A, CF, Rovers
3 Oct.	Clubman's Car Races	BARC	FL, FF, F100, T, PS, C	10/-A, 4/-C, 4/-P
17 Oct.	Clubman's Car Races	Hagley DCC	FL, FF, F100, T, PS, C	10/-A, 4/-C, 4/-P

KEY

Types: Events listed in block capitals are fully international or other important meetings.

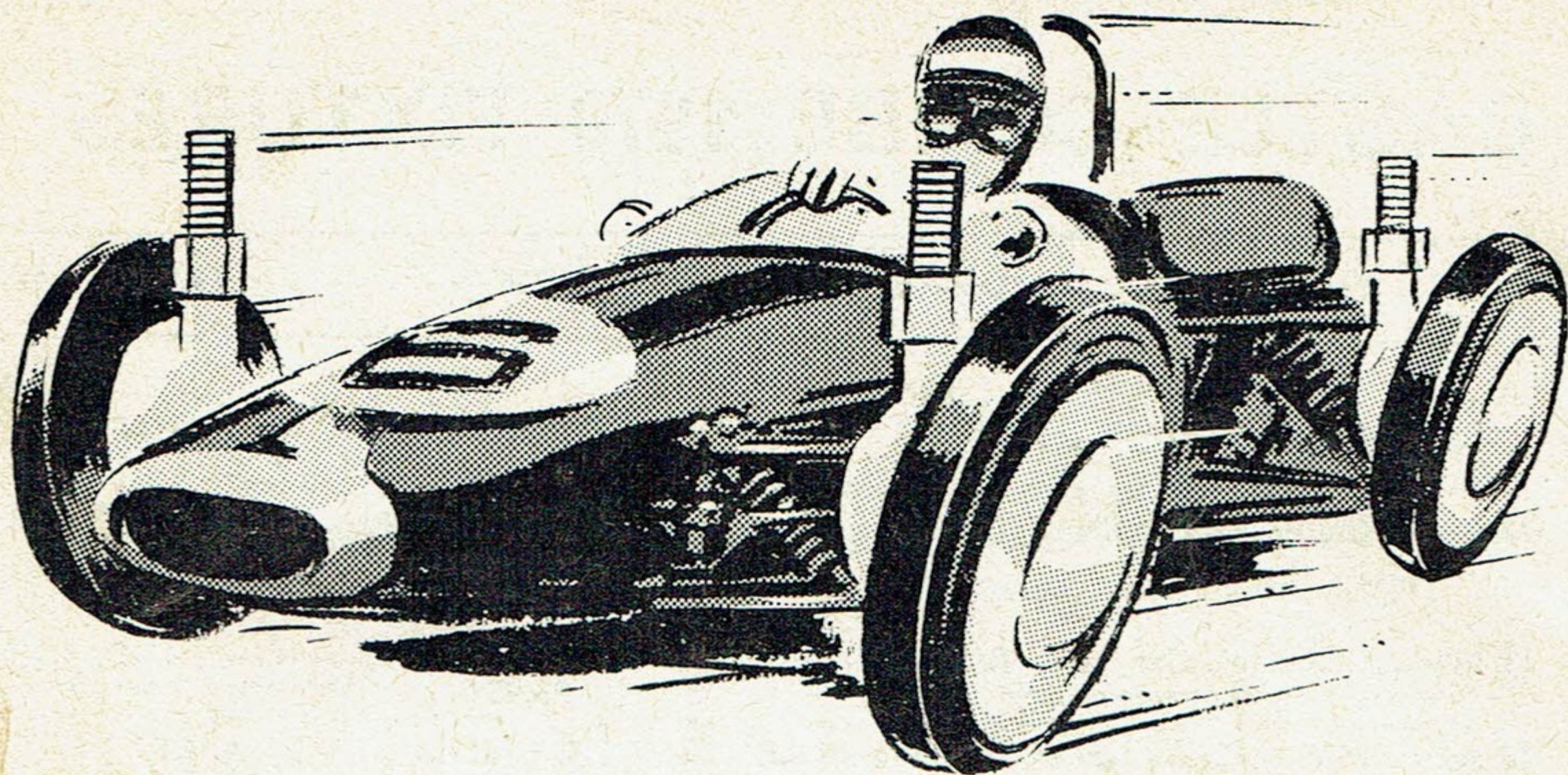
Events in normal black type are championship meetings involving prize money and are planned as public entertainments.

Events in lightweight type are clubman's meetings intended primarily for the benefit of competitors. Supporters are welcomed, at the published charges, on the understanding that these are not professional promotions.

Races: F1—Formula One. F5000—Formula 5000. FL—Formule Libre. F3—Formula 3. F4—Formula 4. FV—Formula V. FF—Formula Ford. Hist.—Historic Racing Cars. S6—Group 6 Sports Prototype. S5, 6-2L—Group 4 Sports Cars up to 2 litres. GT—Special Grand Touring. F100—Formula F100 Sports Cars. PS—Production Sports. C—Clubman's Sports. T2—Group 2 Saloon. T—Saloon Cars (Club-Type). 750—750 Formula. Mono—Monoposto Formula 1200—Formula 1200.

Charges: A—Adults. C—Children. CF—Children Free. S—Covered Stands. OS—Open Seats or Stands. SF—Stands Free. P—Paddock. SP—Stands and Paddock combined. ROVERS—Stands and Paddock Free.

ALL PARKING FREE.



everything moves on **SHEPHERD[®]** castors

Armchairs, settees, wardrobes, beds — all motor smoothly on Shepherd Castors. That's because Shepherd are the world's best engineered castors. Beautifully designed, precision-made. With metal, nylon-type or rubber-tyred wheels. You'll find a set of Shepherd Castors in over 4 million homes in this country. Yours as well?

From your hardware, departmental or soft furnishing store.



SHEPHERD CASTORS are manufactured in Great Britain by:
ARCHIBALD KENRICK & SONS LIMITED,
West Bromwich, Staffordshire.