



Affiliated to the  
Royal Cycle Union, Midlands Section

# MIDLAND MOTOR CYCLE RACING CLUB



## **CROFT AUTODROME**

**Saturday 21st June 1980**

**PROGRAMME 30p.**



# LIST OF COMPETITORS

## Sidocars.

1 J Hattersloy N.S	61 N Wilson	1 N Miles/V Miles
2 R Butcher	62 C Maxwell	2 R Chapman/J Chapman
3 D Bexon	63 A Clarke	3 I Reynolds/S Dawo
4 P Fletcher	64 S Fletcher	4 R Smith/G Hughes N.S.
5 S Watkins	65 J Loder	5 K Williams/B Hanman
6 D Hall	66 D Soxtan	6 J Farr/T White
7 K Walker	67 B Franklin	7 S Jones/S Taylor
8 R Penney	68 M Edge	8 G Gregg/L Gregg
9 A Atkins	69 S Thomas	9 J Mulcahy/F Peobles
10 S Brewis	70 G Baldock	10 D Hawkins/R Hawkins
11 P Parnham	71 A Janczuk	11 P Hanson/S Aspin
12 G Goodwin	72 P Simmons	12 B Maco/R Knight
14 A Parish	73 R Hutchison	14 P Hancock/Paul Hancock
15 D Cook	74 M Stophenson	15 B Makim/M Makim
16 A Brown	75 M Preston	16 N Burgess / Burgess
17 P Soulsby	76 T Greaves	17 N Burgess Jn./S Burgess
18 P McGhee	77 S Dowey	18 K Howles/D Board
19 W Bateman	78 N Storey	19 P Hanafin/G McGladdery
20 A Couldwell	79 P Crawford	20 L Pallistor/
21 L Dove N.S	80 R Caddy	
22 R Taylor	81 P Hutchinson	
23 A Woodhead	82 S Burgess	
24 T Drury N.S.	83 P Wakofield	
25 D Martin	84 S Bristow	
26 M Ritchie	85 J Edwards	
27 C Graham N.S.	86 H Gibbon	
28 D Sadler	87 C Maxwell	
29 A Mooks N.S.	88 J Lintin	
30 R Brewer	89 G Worton	
31 I Craig	90 G Atterton	
32 P Lovell	91 M Randall	
33 K Howe	92 B Shaw	
34 T Marsh	93 D Harris	
35 M Stokes	94 P Davies	
36 J Makinson	95 M Withers	
37 M Deaville	96 J Davidson	
38 I Sharratt	97 H Solby	
39 R Haynes	98 M Garbutt	
40 G Hamilton	99 J Lucas	
41 R Bannistor	100 E McFarlane	
42 R Botteridge	101 S Hough	
43 A Morris	102 A Potter	
44 G Burns-Salmond	103 F Pratt	
45 D Milward	104 I Whitt	
46 C Pole N.S.	105 M Fletcher	
47 M Edwards	106 D Griffith	
48 G Greenham	107 A Haw	
49 T Wilkinson	108 D Gale	
50 D Cummings	109 J Loryman	
51 S Atherton	110 G Stinton	
52 M Whitoley	111 F Hitch	
53 J McCormick	113 B Noble	
54 N Lowthwaito	114 P Lindley	
55 K Green	115 G Wootton	
56 M Cottle	116 J Goodwin	
57 R Kettle	117 E Loryman	
58 F Cook		
59 D Flathor		
60 K Rico		



# MIDLAND MOTORCYCLE RACING CLUB

Croft Road Races  
Croft Autodrome, Nr. Darlington  
Permit No. Q1405

Restricted to members of R50,  
New Era and M.M.C.R.C.  
Permanent Course Licence No. 5

SATURDAY 21st JUNE 1980.

## Officials of the Meeting.

Steward of the ACU  
Stewards of M.M.C.R.C.  
Clerk of the Course  
Assistant C. of Course  
Chief Marshall  
Assistant C. Marshall  
Chief Paddock Marshall  
Chief Scrutineer  
Safety Officer  
Timekeeper  
Starter  
Assistant Starter  
Sec of meeting  
Assistant Sec. of meeting

B Tattershall

D Steele

P Williamson

B Hepple

L Emery

J Jolley

M Cheneler

Ken Hall

R Kenyon

Mrs C Kenyon

Mrs P Lovell

Mrs K Russell

## WARNING

Motor Racing is dangerous. Spectators attending this circuit do so entirely at their own risk. It is a condition of admission that all persons having any connection with the promotion and or organisation and or conduct of the meeting including the owners of the land and the drivers and owners of the vehicles are absolved from all liability arising out of accidents causing damage or personal injury to spectators or ticket holders.

DOGS ARE NOT ALLOWED ONTO THE CIRCUIT.

The Club reserves the right to reduce the number of laps per race and heats, if necessary.

PLEASE HELP TO KEEP CROFT AUTODROME TIDY BY PLACING ALL RUBBISH IN BINS PROVIDED OR TAKE IT HOME WITH YOU. THANK YOU.

The Midland M.C.R.C. Would like to thank Croft Autodrome, the St Johns Ambulance Brigade, the Doctor, the Marshalls and the Officials for their help at this meeting.



Races 1 &amp; 11

Production (3 classes)

5 laps each race

Grid position

6 David Hall	250 Yamaha
14 Andrew Parish	347 Yamaha
18 Patrick McGhee	398 Tapyam
25 Doan Martin	347 Yamaha
26 Malcolm Ritchie	400 F & C Yamaha
32 Pote Lovell	850 Norton
34 Trevor Marsh	492 Suzuki
5 John Makinson	400 Yamaha
41 Richard Bannister	398 Yamaha
42 Rog Botteridge	900 Honda
43 Alan Morris	497 Kawasaki
54 Nigel Lowthwaito	398 Yamaha
60 Kevin Rico	400 Yamaha
61 Nigel Wilson	1000 Kawasaki
66 Dave Sexton	247 Suzuki
68 Mark Edge	398 Yamaha
69 Stephen Thomas	247 Crooks Suzuki
70 Geof Baldock	398 Yamaha
73 Ray Hutchison	398 Yamaha
74 Marcus Stephenson	247 Yamaha
76 Terence Greaves	400 Yamaha
78 Neil Storey	498 Bol D'or Kawasaki
80 Rob Caddy	400 Yamaha
83 Peter Wakefield	997 Suzuki
85 John Edwards	250 Yamaha
88 Julian Lintin	250 Yamaha
96 Jim Davidson	997 Suzuki
97 Howard Selby	900 JB Honda
98 Michael Garbutt	398 Yamaha
100 Eric McFarlane	864 Ducati
101 Steven Hough	497 Kawasaki
104 Ian Whitt	250 Yamaha
105 Michael Fletcher	492 Suzuki
108 Dave Gale	398 Yamaha
114 Phil Lindley	247 Briggs Yamaha

A  
A  
A  
A  
A  
A  
A  
A  
B  
B  
B  
B  
B  
B  
B  
B  
B  
B  
C  
C  
C  
C  
C  
C  
C  
C  
C  
C  
D  
D  
D  
D  
D  
D  
D  
D  
D  
D  
E  
E  
E

## Results.

1st	2nd	3rd	4th	5th	6th	7th	8th	9th	10th	11th	12th
13th	14th	15th	16th	17th	18th	19th	20th	21st	22nd		
1st	2nd	3rd	4th	5th	6th	7th	8th	9th	10th	11th	
12th	13th	14th	15th	16th	17th	18th	19th	20th	21st	22nd	

Points in the first race down to 6th place in each capacity class  
 Trophies in the second race first 3 1300c.c., 1st and 2nd 250c.c. and 500c.c.



Racos 2 & 12

300-500c.c.

5 laps each race

Grid position

4 Paul Flotchor	350 Yamaha	A
5 Stophon Watkins	492 Bandit Suzuki	A
10 Sam Browis	347 Yamaha	A
17 Paul Soulsby	354 Scitsu	A
27 Chris Graham	500 Suzuki	A
31 I Craig	347 Yamaha	A
33 Kavin Howe	350 Yamaha	A
34 Trevor Marsh	492 Suzuki	A
35 Mick Stokes	351 Yamaha	B
39 Ray Haynos	351 Yamaha	B
45 Douglas Milward	430 Fahren Yamaha	B
47 Mick Edwards	500 Kawasaki	B
54 Nigel Lowthwaite	398 Yamaha	B
58 Peter Cook	347 Yamaha	E
65 John Loder	430 Fahren	B
75 Mick Preston	350 Yamaha	B
86 Harry Gibbon	347 Yamaha	C
99 Jon Lucas	350 Yamaha	C
101 Steven Hough	497 Kawasaki	C
103 Ian Pratt	351 Yamaha	C
106 David Griffith	347 Yamaha	C
107 Andy Haw	347 Yamaha	C
110 Graham Sinton	350 Yamaha	C
111 Mark Sissons	350 Yamaha	C

# Results.

1st	2nd	3rd	4th	5th	6th	7th	8th	9th	10th	11th	12th
13th	14th	15th	16th	17th	18th	19th	20th	21st	22nd	23rd	
1st	2nd	3rd	4th	5th	6th	7th	8th	9th	10th	11th	12th
13th	14th	15th	16th	17th	18th	19th	20th	21st	22nd	23rd	

Points in the first race down to 6th place 351c.c. and over  
 Trophies in the second race down to 6th place 351c.c. and over



Races 3 &amp; 13

Sidecars up to 1300c.c.

5 laps each race

Grid position

1	Neil Miles/ Vivion Miles		840	Tri-Shark BSA Twin	A
2	Robert Chapman/ John Chapman		998	Kawasaki	A
3	Ivor Reynolds/ Steve Dawe		738	Suzuki	A
4	Raymond Smith/ Gooff Hughes	N.S.	900	Windle Honda	
5	Ken Williams/ Bert Hanman		900	Wilman Honda	B
6	Jim Farr/ Tony White		700	Triumph	B
7	Stoven Jones/ Stoven Taylor		750	BSA	C
8	Gooff Gregg/ Lynn Gregg		738	Suzuki	C
9	John Mulcahy/ Frank Peebles		738	Blue 'J' Suzuki	C
10	Dave Hawkins/ Roy Hawkins		997	Suzuki	D
11	Paul Hanson/ Stuart Aspin		998	Moonraker	D
12	Barry Mace/ Roger Knight		830	Norton	E
14	Peter Hancock/ Paul Hancock		750	Suzuki	E
15	Bob Makim/ Martin Makim		750	Devimead BSA	E
16	Norman Burgess Sn/ David Burgess		460	Rumble Sperton	F
17	Norman Burgess Jn/ Stephen Burgess		1000	Yoshimura Kawasaki	F
18	Konny Howles/ David Board		750	Suzuki	G
19	Peter Hanafin/ Gooff McGladdery		998	Imp	G
20	Len Pallister/		984	Kawasaki	G

## Results

1st	2nd	3rd	4th	5th	6th	7th	8th	9th	10th	11th
12th	13th	14th	15th	16th	17th	18th	19th			
1st	2nd	3rd	4th	5th	6th	7th	8th	9th	10th	11th
12th	13th	14th	15th	16th	17th	18th	19th			

Points in the first race down to 6th place

Trophies in the second race down to 3rd place driver and passenger  
also first twin cylinder team home to receive trophies.



Races 4 & 14

125c.c. and 250 single cylinders

5 laps each race

Grid position

2 Ricky Butcher  
8 Russell Benney  
19 Vaughan Batoman  
32 Peto Lovell  
37 Michael Deavillo  
40 Garry Hamilton  
48 Gooff Greenham  
49 Trevor Wilkinson  
50 David Cummings  
55 Kon Groon  
59 Douglas Flathor  
82 Stephon Burgoss  
90 Glenn Attorton  
91 Malcolm Randall  
107 Timothy Waby  
118 ALAN BROWN

125 Honda  
246 Suzuki  
124 Yamaha  
250 Cotton  
125 Yamaha  
125 Yamaha  
247 Cotton  
250 Grooves  
250 M.Z.  
125 Bennett  
125 Yamaha  
125 Yamaha  
125 Honda  
246 Suzuki  
250 Ducati  
125 YAMAHA.

A  
A  
A  
A  
A  
A  
A  
A  
B  
B  
B  
B  
B  
B  
B  
B

# Results

1st 32 2nd 82 3rd 118 4th 2 5th 55 6th 90 7th 8 8th 91 9th 37 10th 59  
11th 50 12th 48 13th 40 14th 107 15th 49 16th 19

Fastest lap. 1min 27.4sec.

72.08 mph.

1st 118 2nd 82 3rd 2 4th 32 5th 55 6th 90 7th 8 8th 37 9th 49 10th 19

11th 48 12th 107 13th 91 14th 40 15th 59 16th 50. Fastest lap 1min 27.3sec.

72.16 mph.

Points in the first race down to 6th place each capacity class

Trophies in the second race down to 3rd place in each capacity class



Races 5 &amp; 15

200-350c.c.

5 laps each race

Grid position

4 Paul Fletcher	350 Yamaha	A
7 Keith Walker	347 Nobco Yamaha	A
10 Sam Browis	347 Yamaha	A
15 David Cook	247 Yamaha	A
20 Alan Couldwell	347 Yamaha	A
24 Tom Drury	347 Yamaha	A
31 I Craig	347 Yamaha	A
33 Kevin Howo	350 Yamaha	A
38 Ian Sharratt	250 Yamaha	B
39 Ray Haynes	347 Yamaha	B
40 Garry Hamilton	250 Yamaha	B
44 G Burns-Salmond	350 Yamaha	B
57 Roger Kottlo	347 Yamaha	B
53 Peter Cook	347 Yamaha	B
64 Stephen Fletcher	250 Yamaha	B
75 Mick Preston	350 Yamaha	B
84 Steven Bristow	250 Yamaha	C
86 Harry Gibbon	347 Yamaha	C
89 Garry Worton	347 Yamaha	C
106 David Griffith	347 Yamaha	C
107 Andy Haw	347 Yamaha	C
110 Graham Sinton	350 Yamaha	C
111 Phil Hitch	247 Batos Yamaha	C
112 Mark Sissons	350 Yamaha	C

## Results

1st	2nd	3rd	4th	5th	6th	7th	8th	9th	10th	11th		
12th	13th	14th	15th	16th	17th	18th	19th	20th	21st	22nd		
1st	2nd	3rd	4th	5th	6th	7th	8th	9th	10th	11th		
12th	13th	14th	15th	16th	17th	18th	19th	20th	21st	22nd		

Points in the first race down to 6th place 251c.c. and over  
 Trophies in the second race down to 6th place 251c.c. and over



Racos 6 &amp; 16

501-1300c.c.

5 laps each race

Grid position

7 Keith Walkor	746 Nobco Yamaha	A
28 Davo Sadlor	812 Rickman Honda	A
32 Poto Lovell	350 Norton	A
52 Martin Whiteloy	750 Norton	A
61 Nigel Wilson	1000 Kawasaki	A
67 Byron Franklin	984 Kawasaki	A
71 Alistair Janczuk	900 P & M Honda	A
83 Potor Wakofield	997 Suzuki	A
92 Bernard Shaw	750 Sooley Norton	B
93 Douglas Harris	750 Norton	B
94 Poto Davies	750 Yamaha	E
96 Jim Davidson	997 Suzuki	B
100 Eric McFarlane	864 Ducati	B
102 Alan Potter	750 Yamaha	B

## Results

1st	2nd	3rd	4th	5th	6th	7th	8th	9th	10th
11th	12th	13th	14th	15th	16th	17th	18th	19th	20th
1st	2nd	3rd	4th	5th	6th	7th	8th	9th	10th
11th	12th	13th	14th	15th	16th	17th	18th	19th	20th

Points in the first race down to 6th place  
 Trophies in the second race down to 6th place



Racos 7 &amp; 17

120-250c.c.

5 laps each race

Grid position

3 Dave Boxon	250 Yamaha	A
7 Keith Walker	247 Nobco Yamaha	A
9 Alan Atkins	247 Yamaha	A
11 Peto Parnham	247 Fidelity Yamaha	A
12 Garry Goodwin	247 Yamaha	A
15 David Cook	247 Yamaha	A
16 A Brown	250 Kawasaki	A
22 Robert Taylor	247 Yamaha	A
23 Alan Woodhead	247 Yamaha	B
24 Tom Drury	247 Yamaha	B
38 Ian Sharratt	247 Yamaha	B
40 Garry Hamilton	125 Yamaha	B
50 David Cummings	250 M.Z.	B
62 Charlos Maxwell	247 Yamaha	B
64 Stophen Fletcher	247 Yamaha	B
66 Dave Sexton	250 DSR Special	B
72 Paul Simmons	249 Yamaha	C
79 Phil Crawford	247 Yamaha	C
81 Peter Hutchinson	247 Yamsel	C
84 Steven Bristow	250 Yamaha	C
95 Mick Withers	249 Yamaha	C
104 Ian Whitt	250 Yamaha	C
109 Joo Loryman	249 Yamaha	C
110 Graham Sinton	250 Yamaha	C
111 Phil Hitch	247 Batos Yamaha	D
115 Grog Wootton	250 Yamaha	D
117 Eddie Loryman	250 Yamaha	D

## Results.

1st	2nd	3rd	4th	5th	6th	7th	8th	9th	10th	11th	12th
13th	14th	15th	16th	17th	18th	19th	20th	21st	22nd	23rd	
1st	2nd	3rd	4th	5th	6th	7th	8th	9th	10th	11th	12th
13th	14th	15th	16th	17th	18th	19th	20th	21st	22nd	23rd	

Points in the first race down to 6th place  
 Trophies in the second race down to 6th place



Races 8 & 18

175-500c.c. Four Strokes

5 laps each race

Grid position

21 Leo Dove	500 Triton	A
30 Robert Brewer	493 B & C Honda	A
43 Alan Morris	497 Kawasaki	A
51 Stephen Athorton	492 Honda	A
53 John McCormick	500 Honda	A
56 Michael Cottlo	492 Honda	A
63 Alan Clarke	498 Honda	A
77 Stephen Dowey	460 Honda	A?
78 Neil Storey	498 Bol D'or Kawasaki	B
87 Colin Maxwell	430 Ducati	B
101 Stevon Hough	497 Kawasaki	B
113 Bernard Noble	348 Norton	B

#### Results.

1st	2nd	3rd	4th	5th	6th	7th	8th	9th	10th	11th
12th	13th	14th	15th	16th	17th	18th				

1st	2nd	3rd	4th	5th	6th	7th	8th	9th	10th	11th
12th	13th	14th	15th	16th	17th	18th				

Points in the first race down to 6th place  
Trophies in the second race down to 6th place



Race 9

Heat 1 175-1300c.c.

4 laps

Grid position

4 Paul Fletcher	350 Yamaha	A
5 Stephen Watkins	492 Bandit Suzuki	A
7 Keith Walker	347 or 746 Nobco Yamaha	A
10 Sam Brown	347 Yamaha	A
11 Peto Parnham	247 Fidelity Yamaha	A
12 Garry Goodwin	247 Yamaha	A
16 A Brown	250 Kawasaki	A
17 Paul Soulsby	354 Scitsu	A
20 Alan Couldwell	347 Yamaha	B
21 Lee Dove	500 Triton	B
22 Robert Taylor	247 Yamaha	B
23 Alan Woodhead	247 Yamaha	B
24 Tom Drury	347 Yamaha	B
25 Dean Martin	347 Yamaha	B
27 Chris Graham	500 Suzuki	B
28 Dave Sadler	812 Rickman Honda	B
31 I Craig	347 Yamaha	C
33 Kevin Howe	350 Yamaha	C
35 Mick Stokes	351 Yamaha	C
42 Reg Betteridge	900 Honda	C
43 Alan Morris	497 Kawasaki	C
44 G Burns-Salmond	350 Yamaha	C
45 Douglas Milward	430 Fahren Yamaha	C
47 Mick Edwards	500 Kawasaki	C

The first 20 from this heat go forward to the final RACE. 19

1st 2nd 3rd 4th 5th 6th 7th 8th 9th 10th 11th  
12th 13th 14th 15th 16th 17th 18th 19th 20th



Race 10      Heat 2      175-1300c.c.

4 laps

Grid position

51 Stephen Athorton	492 Honda	A
57 Roger Kettle	347 Yamaha	A
60 Kevin Rice	400 Yamaha	A
65 John Lodor	430 Fahren	A
67 Byron Franklin	984 Kawasaki	A
70 Geoff Baldock	398 Yamaha	A
71 Alistair Janczuk	900 P & M Honda	A
75 Mick Preston	350 Yamaha	A
76 Torenco Greaves	400 Yamaha	B
79 Phil Crawford	247 Yamaha	B
80 Rob Caddy	400 Yamaha	B
84 Stovon Dristow	250 Yamaha	B
86 Harry Gibbon	347 Yamaha	B
89 Garry Worton	347 Yamaha	B
91 Bernard Shaw	750 Scoley Norton	P
93 Douglas Harris	750 Norton	B
94 Peto Davies	750 Yamaha	C
99 Jon Lucas	350 Yamaha	C
102 Alan Pottor	750 Yahama	C
103 Ian Pratt	351 Yamaha	C
106 David Griffith	347 Yamaha	C
107 Andy Haw	347 Yamaha	C
111 Phil Hitch	247 Bates Yamaha	C
112 Mark Sissons	350 Yamaha	C
115 Greg Wootton	250 Yamaha	D

The first 20 from this heat go forward to the final, RACE 19

1st	2nd	3rd	4th	5th	6th	7th	8th	9th	10th	11th
12th	13th	14th	15th	16th	17th	18th	19th	20th		
1st	2nd	3rd	4th	5th	6th	7th	8th	9th	10th	11th
12th	13th	14th	15th	16th	17th	18th	19th	20th		



Race 19 FINAL 175-1300c.c.

8 laps

Grid position

1	A
2	A
3	A
4	A
5	A
6	A
7	A
8	A
9	B
10	B
11	B
12	B
13	B
14	B
15	B
16	B
17	C
18	C
19	C
20	C
21	C
22	C
23	C
24	C
25	D
26	D
27	D
28	D
29	D
30	D
31	D
32	D
33	E
34	E
35	E
36	E
37	E
38	E
39	E
40	E

Results.

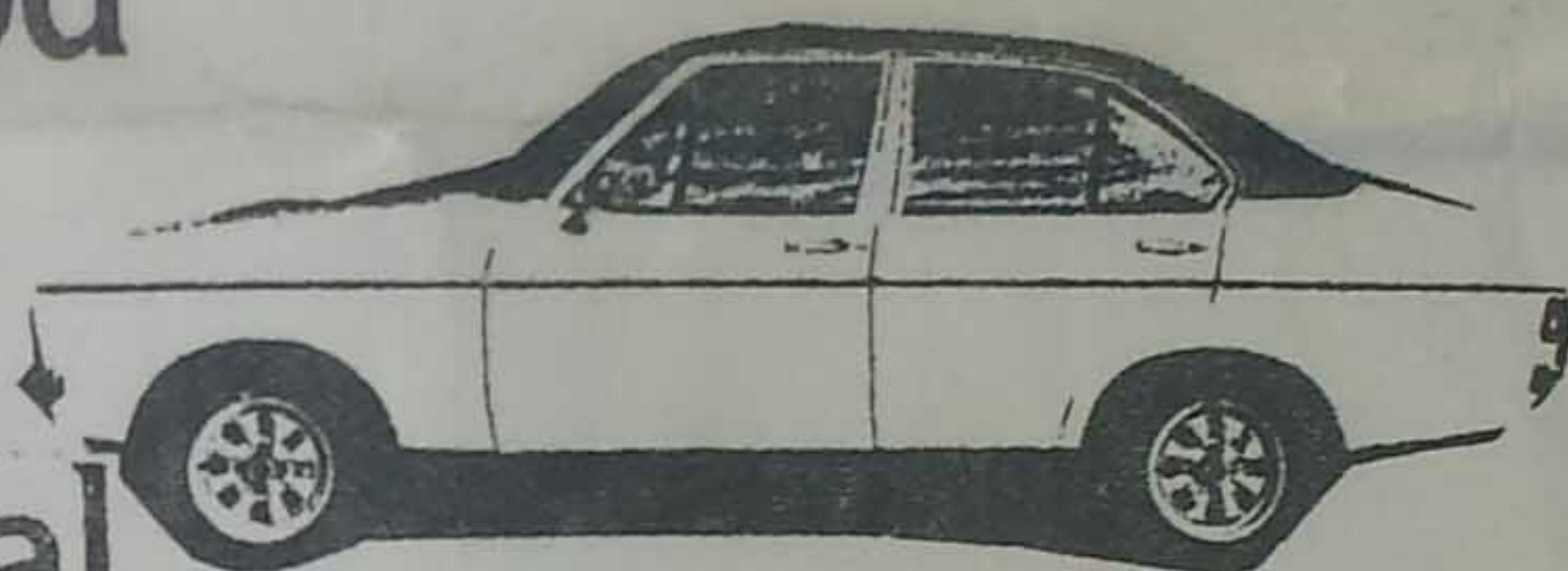
1st £20	2nd £12	3rd £10	4th £8	5th £7	6th £6	7th £5		
8th £4	9th £3	10th £2	11th £1	12th £1	13th	14th	15th	



# SWAN NATIONAL car rental



It's because we're Swan National  
we're so good



at being local



## SWAN NATIONAL car rental



**iR** UK AND INTERNATIONAL  
RESERVATION OFFICE  
305-307 Chiswick High Rd., London W4 4HH  
Telephone 01 995 4665 Telex 935102  
Telegrams & Cables SWANNAT LDN