

SPIRAL GFX

FULL CUSTOM GRAPHICS

PRICES FROM £84.95



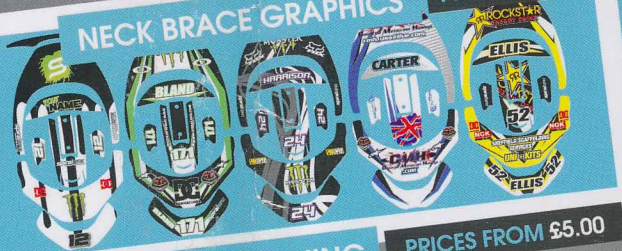
2012 TEAM KITS

PRICES FROM £84.95



NECK BRACE GRAPHICS

PRICES FROM £18.00



IPAD & IPHONE GRAPHICS



CASUAL CLOTHING

PRICES FROM £5.00



AMCA RIDERS
15% OFF
ALL PRODUCTS

WWW.SPIRALGFX.COM

CUSTOM BACKGROUNDS
VEHICLE WRAPS · TEAM KITS
SHIRT PRINTING · CLOTHING
NECK BRACE GRAPHICS
PIT WEAR · IPHONE GRAPHICS

0845 040 5912 OR 01257 237 740 / WWW.SPIRALGFX.COM / INFO@SPIRALGFX.COM

BUY ONLINE NOW!

CHRISTCHURCH 25/3/2012

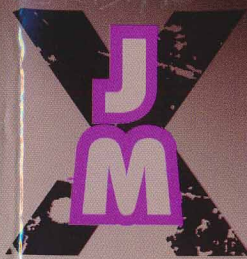
OFFICIAL PROGRAMME



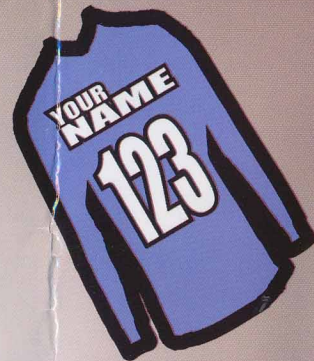
AMCA AMATEUR MOTOR CYCLE ASSOCIATION SINCE 1932 - NO 1 FOR OFF-ROAD SPORT

WARNING! MOTORSPORT CAN BE DANGEROUS
ONLY CROSS THE TRACK AT THE OFFICIAL CROSSING POINT. DO NOT CROSS THE TRACK DURING RACING
Despite the organisers taking all reasonable precautions, unavoidable accidents can happen.
Please comply with instructions of Marshals and Notices. They are only concerned with your safety.

www.amca.uk.com



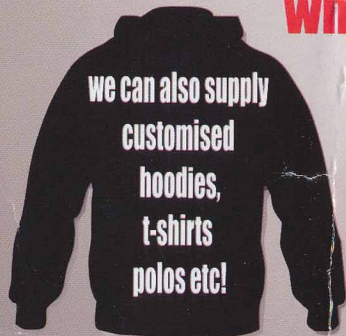
**CUSTOMISED
MOTOCROSS
SHIRTS**



facebook page:
"Jmx printing"
for all your questions

**Discount given to you
when you quote this reference
GCCAMCA**

**WE ALSO SUPPLY IN HOUSE
EMBROIDERY, HEAT TRANSFER
AND SCREEN PRINTING
SERVICES**



**also suppliers of work wear, corporate wear,
school wear and promotional products.**

...MAJOR STOCKISTS OF DICKIES WORKWEAR



01476 594330

jmxfsales@granthamclothing.com

www.granthamclothing.com

CHRISTCHURCH MOTOCROSS CLUB PRESENTS.....

SPRING MOTOCROSS

At CROW HILL
Event Auth Code 13/09/3379
On Sunday 25th March 2012

By Kind Permission of
Mr Richard Lowndes

**TODAY'S EVENT IS SPONSORED BY:-
NEW MILTON TYRE COMPANY**

Officials of the Meeting
Secretary of the Meeting...Tim Handscombe
Clerk of the Course...Bernie Moore (51591)
Chief Marshal...Tim Handscombe
Course Marshal...Steve Elford
Lap Scorers...Lucy Stearn, Katy Stearn & Suzie Hines
Starter...Richard Hacon
Finisher...Trevor Barton
Pre Race Inspectors...Jamie Winbourne & Mark Dunning
AMCA Stewards...Alf Stearn (Purbeck) 51389
& Keith Leach (Marshfield) 35464
First Aid by...XL Ambulance Service
Grid Reference...SU162039
Post Code...BH24 3ED

**AMCA
PLACINGS &
POINTS**

| | |
|------|----|
| 1st | 60 |
| 2nd | 54 |
| 3rd | 50 |
| 4th | 47 |
| 5th | 45 |
| 6th | 43 |
| 7th | 41 |
| 8th | 39 |
| 9th | 37 |
| 10th | 35 |
| 11th | 33 |
| 12th | 31 |
| 13th | 29 |
| 14th | 27 |
| 15th | 26 |
| 16th | 25 |
| 17th | 24 |
| 18th | 26 |
| 19th | 22 |
| 20th | 21 |
| 21st | 20 |
| 22nd | 19 |
| 23rd | 18 |
| 24th | 17 |
| 25th | 16 |
| 26th | 15 |
| 27th | 14 |
| 28th | 13 |
| 29th | 12 |
| 30th | 11 |
| 31st | 10 |
| 32nd | 9 |
| 33rd | 8 |
| 34th | 7 |
| 35th | 6 |
| 36th | 5 |

TIMETABLE OF EVENTS

PRI: 8.00-9.00 AM

PRACTICE: 9.45 AM

EXPERTS

INTER JUNIORS

JUNIORS

SENIORS

RACING: 10.45 AM

ORDER OF RACING

| | | | |
|----------|-----------|-----------|-----------------------------|
| 1 | 6 | 11 | EXPERTS UNLIMITED |
| 2 | 7 | 12 | INTER JUNIORS |
| 3 | 8 | 13 | JUNIORS UNLIMITED |
| 4 | 9 | 14 | SENIORS UNLIMITED |
| 5 | 10 | 15 | MX2 JUNIORS UNDER 18 |

PRESENTATION OF AWARDS

The winning rider in each class is the rider with the highest number of points. All races shown in the programme will count. Any additional races not shown in the programme will not count towards the overall position. Any ties will be settled by the results of the last race in each class.

NEW MILTON TYRE CO

**TYRES
BATTERIES**

EST. OVER 30 YEARS



**FAST FRIENDLY SERVICE
PERSONAL ATTENTION
HIGHLY COMPETITIVE PRICES**
Company Car & National Fleet Specialists
HUGE STOCKS ALL MAIN MAKES

**METICULOUS ON OR OFF CAR WHEEL BALANCING
ACCURATE WHEEL ALIGNMENT
ALLOY WHEEL SPECIALISTS
FREE TYRE SAFETY CHECK**



(01425) 613647

131-133 Old Milton Road, (Near to Shops), New Milton

OPEN 8.30-6.00 MON-FRI, 8.30-5.00 SAT

EXPERTS UNLIMITED
MX2:- YELLOW NUMBERS ON BLUE PLATES
MX1:- BLACK NUMBERS ON YELLOW PLATES

MX2:-

| No | Name | Race 1 | Race 2 | Race 3 | Total | Final | Mac | CC | Club |
|-----|------------------|--------|--------|--------|-------|-------|-----|------|------|
| 51 | James Knatchbull | | | | | | KTM | 144 | BATH |
| 57 | Stephen Hurst | | | | | | KTM | 250F | EAST |
| 123 | Stuart Keen | | | | | | YAM | 250F | HILL |
| 128 | Rory O Connell | | | | | | HON | 250F | DEV |
| 141 | Jake Humphreys | | | | | | | | EAST |
| 226 | Lewis Abbott | | | | | | KAW | 250F | PUR |
| 334 | Ayrton Fiorenzio | | | | | | TM | 250F | UPAV |

MX1:-

| No | Name | Race 1 | Race 2 | Race 3 | Total | Final | Mac | CC | Club |
|-----|----------------|--------|--------|--------|-------|-------|-----|------|------|
| 14 | Richard Meakin | | | | | | HON | 450F | EAST |
| 45 | Wayne Holder | | | | | | KTM | 250 | NWIL |
| 92 | David Hopkins | | | | | | KTM | 350F | EAST |
| 103 | Shaun Hayles | | | | | | YAM | 250 | CHRI |
| 105 | Matthew Urch | | | | | | HON | 450F | STRE |
| 159 | Stuart West | | | | | | KAW | 450F | MWIL |
| 171 | Stephen Elford | | | | | | HON | 450F | CHRI |
| 181 | Andrew Bowles | | | | | | KAW | 450F | MARS |
| 205 | Paul Wiczorek | | | | | | HON | 450F | MWIL |
| 359 | Mark Dunning | | | | | | KAW | 450F | CHRI |
| 558 | Jamie Smith | | | | | | SUZ | 450F | DEV |
| 577 | Joseph Barry | | | | | | KAW | 450F | UPAV |

Late Entries

www.tidycars.co.uk

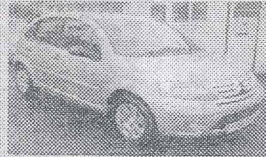


Specialists in one owner, low mileage cars and vans

We can source any make or model

Professional valeting

Friendly, local advice



Citroen C3 1.4 Exclusive, 2008(58)
 One owner, full service history, 25k miles, 5 door, Artic Steel, power steering, Isofix, remote central locking, air conditioning, electric windows, alloys, heated mirrors.
£4995

01425 628827

Southern Lane, New Milton BH25 7JE

T. B. HANDSCOMB



BUILDING SERVICES

From Planning to Completion

☎ 01202-434294

☎ 07074 434294

INTER JUNIORS

WHITE NUMBERS ON BLACK PLATES

| No | Name | | Race 1 | Race 2 | Race 3 | Total | Final | Mac | CC | Club |
|-----|------------------|------|--------|--------|--------|-------|-------|-----|----|------|
| 223 | Jack Roebuck | (15) | | | | | | YAM | 85 | NWIL |
| 316 | Thomas Keen | (14) | | | | | | KAW | 85 | DEV |
| 451 | Billy Wiczorek | (10) | | | | | | KAW | 85 | MWIL |
| 470 | Harry Wiczorek | (12) | | | | | | KAW | 85 | MWIL |
| 472 | Adam Moore | (14) | | | | | | KAW | 85 | NWIL |
| 617 | Connor Aspinwall | (12) | | | | | | | | UPAV |

Late Entries

DAVE JONES & SON

Quality Motor Services

(Proprietor: D. Jones)

HIGH STANDARD CAR REPAIRS AND SERVICING

Find us by the Water Tower car park, in Osborne Road, New Milton

Convenient for the Station and the Town Centre.

Leave your car for Service, Tune-up or M.O.T. while you take the train to work, or do the shopping.



Retail Motor Industry Federation

Tel. New Milton 01425 629910

[c-m]

ROSS PACKARD PAINTWORK

Specialising in quality paintwork

TEL: 01425 - 615039

MOB: 07789 - 801928

FAX: 01425 - 638846

ADD: Gore Road Industrial Estate
New Milton

WEB: www.ross-packard.co.uk

Hants

EMAIL: info@ross-packard.co.uk

BH25 6SG

Vehicle body repairs to the highest standard with first-rate customer care

ROSS PACKARD PAINTWORK LTD

TEL: 01425 615039

WEB: WWW.ROSS-PACKARD.CO.UK

BODY/PAINT REPAIRS

SERVICING

M.O.T'S

TYRES

AIR CONDITIONING

MECHANICAL REPAIRS

ALLOY WHEEL REFURBISHMENT

FREE ESTIMATES

JUNIORS UNLIMITED

WHITE NUMBERS ON BLACK PLATES

MX2:-

| No | Name | Race 1 | Race 2 | Race 3 | Total | Final | Mac | CC | Club |
|-----|---------------------|--------|--------|--------|-------|-------|-----|------|------|
| 49 | Ryan Marsh | | | | | | YAM | 250F | DEV |
| 73 | Quinton Tettmar | | | | | | KTM | 250F | PUR |
| 205 | Tom Whant | | | | | | YAM | 250F | DEV |
| 231 | Ashley Grasso | | | | | | HON | 250F | NWIL |
| 276 | Christopher Yendell | | | | | | HON | 250F | UPAV |
| 318 | Richard Hemmings | | | | | | SUZ | 125 | STRE |
| 352 | Mike Matthews | | | | | | YAM | 250F | CHRI |
| 440 | Dom Aggett | | | | | | KTM | 144 | BATH |

MX1:-

| No | Name | Race 1 | Race 2 | Race 3 | Total | Final | Mac | CC | Club |
|-----|----------------|--------|--------|--------|-------|-------|-----|------|------|
| 10 | Richard Hacon | | | | | | | | CHRI |
| 22 | Shaun Hiscox | | | | | | HON | 500 | DEV |
| 29 | Darren Roberts | | | | | | KTM | 450F | NWIL |
| 112 | Adam Roche | | | | | | SUZ | 450F | CHRI |
| 118 | Karl Roche | | | | | | SUZ | 450F | CHRI |
| 247 | Quinton Perrin | | | | | | YAM | 450F | CHRI |
| 853 | Steve Cole | | | | | | KTM | 250 | CHRI |

Late Entries

CARS & VANS COLLECTED



- ★ Running or not
- ★ Good prices paid
- ★ Plant / Machinery



*We will try to beat anyone's quote in this paper!
Car too good for scrap?*

We will pay more than scrap value!

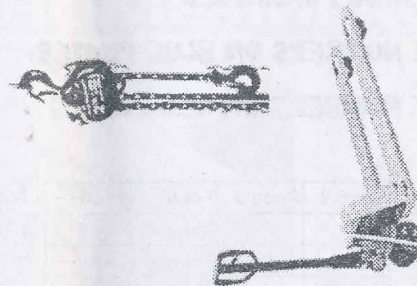
**ALL PAPERWORK COMPLETED
FULLY LICENSED & INSURED**

**CONTACT: SHAUN WOODFORD
Telephone: 07805 563704**

Bridge Farm, Hare Lane, New Milton

ABLE

**LIFTING EQUIPMENT
(SOUTHERN) LTD**



LIFTING EQUIPMENT SPECIALISTS

Training

125 tonne in-house and on site testing facility

Manufacturers of wire rope and chain slings

Suppliers of chainblocks, electric hoists and cranes

Servicing and repair carried out on all lifting equipment

Fibre, webbing and roundslings for all applications

Full range of hire equipment available

A whole tool range



**UNITS 6 & 7, SOVEREIGN BUSINESS PARK, POOLE, DORSET
TEL: 01202 681156 FAX: 01202 668963**

www.ablelifting.co.uk



1990-2010

DESIGNED BY

**ADRENALINE
DESIGNS**

WWW.ADRENALINEDESIGNS.CO.UK

SENIORS UNLIMITED

MX2:- WHITE NUMBERS ON BLUE PLATES

MX1:- WHITE NUMBERS ON RED PLATES

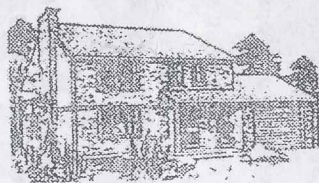
MX2:-

| No | Name | Race 1 | Race 2 | Race 3 | Total | Final | Mac | CC | Club |
|-----|-----------------------|--------|--------|--------|-------|-------|-----|------|------|
| 256 | Steven Moore | | | | | | YAM | 250F | CHRI |
| 260 | Alex Owen | | | | | | HON | 250F | DEV |
| 268 | Charlie Bowyer (17) | | | | | | | | DEV |
| 270 | Luke Parsons (16) | | | | | | YAM | 85 | BATH |
| 355 | Hannah Winbourne (17) | | | | | | YAM | 250F | CHRI |
| 377 | Simon Dunning | | | | | | KAW | 250F | CHRI |
| 777 | Daniel Day | | | | | | KAW | 250F | DEV |

MX1:-

| No | Name | Race 1 | Race 2 | Race 3 | Total | Final | Mac | CC | Club |
|-----|-------------------|--------|--------|--------|-------|-------|-----|------|------|
| 32 | Jason Barrow | | | | | | YAM | 450F | BRID |
| 37 | Dean Aspinwall | | | | | | HON | 450F | UPAV |
| 47 | Timothy Handscomb | | | | | | HON | 450F | CHRI |
| 50 | Peter Wentworth | | | | | | KTM | 450F | CHRI |
| 141 | Stefan Pratt | | | | | | YAM | 250 | MWIL |
| 232 | Steven Stone | | | | | | YAM | 450F | BRID |
| 307 | Justin Cadman | | | | | | YAM | 450F | CHRI |
| 320 | Steve Hall | | | | | | KTM | 450F | BATH |
| 420 | Robert Barry | | | | | | KTM | 280F | UPAV |

Late Entries



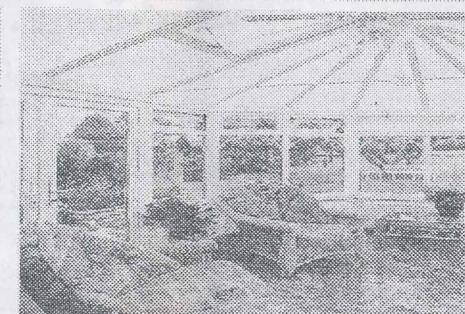
BRECKON ROOFING

ROOFING CONTRACTOR
Slating & Repairs

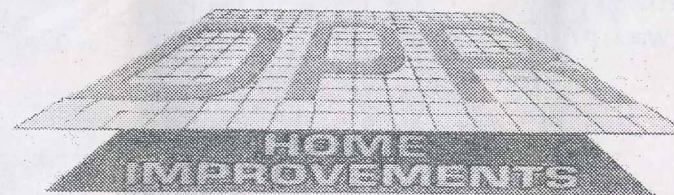
Free Estimates
Re-roofing
Extensions
New Builds

15 Vectis Road, Barton-on-Sea,
New Milton, Hants BH25 7QF
Telephone: 01425 628912
Mobile: 07876 207632

DPR HOME IMPROVEMENTS



Windows Doors Conservatories Balconies



DPR Home Improvements,
New Milton Showroom and Head Office,
19 Station Road, New Milton, Hampshire BH25 6HN

Tel: 01425 612391
Freephone 0800 092 1919



BODY WORKS

EXPERTS IN THE ART OF AUTOMOTIVE REPAIR

YEOMANS WAY
YEOMANS INDUSTRIAL ESTATE
BOURNEMOUTH
BH8 0BJ

TEL: 01202 512288
FAX: 01202 512218

MX2 JUNIORS UNDER 18 YEARS OLD

WHITE NUMBERS ON BLACK PLATES

| No | Name | Race 1 | Race 2 | Race 3 | Total | Final | Mac | CC | Club |
|-----|--------------------|--------|--------|--------|-------|-------|-----|------|------|
| 11 | Tallon Leach (13) | | | | | | SUZ | 85 | MARS |
| 126 | Elliot Dowell (13) | | | | | | KTM | 85 | DEV |
| 330 | Callum Hall (14) | | | | | | KTM | 144 | BATH |
| 464 | Brett Moore (17) | | | | | | KTM | 250F | NWIL |
| 473 | Jack Davis (17) | | | | | | YAM | 250F | DEV |
| 475 | William Davis (15) | | | | | | | | DEV |
| 526 | Jordan Watts (17) | | | | | | HON | 250F | BRID |

Late Entries

SAFETY NOTICE

Warning to all riders

Please be advised that the removal of feet from pegs and hands from bars purely for the purpose of posing is prohibited – this type of activity could present a danger to you and fellow riders. Should this activity be seen by an AMCA official you could face Disciplinary Action.

LIKE WHAT YOU SEE?

REGULATED • FRIENDLY • GRASSROOTS • FUN • NATIONWIDE • SAFE
 AMCA motocross provide riders with cost effective, competitive racing catering for all ages (start racing from nine years!) and abilities. Feel like getting involved but not racing? Clubs are always looking for volunteers to assist with the running of events.

FOR MORE INFO INCLUDING THE NEAREST CLUB GO TO:
WWW.AMCA.UK.COM
JOIN A CLUB TODAY!



AMCA CATERING FOR CHILDREN TO INTERNATIONAL STARS! IT'S EASY TO GET STARTED, JOIN A CLUB TODAY!

BUDGET RACING THE AMCA WAY
 Compete from as little as £28.00 per week
 30 events per annum

1. Annual licence: **£140.00**
 2. Weekly entry fee: **£23.00**
TOTAL: £830.00
WEEKLY COST: UNDER £28.00

VISIT WWW.AMCA.UK.COM

PEACE OF MIND

Structured Events
 Fully trained event management teams
 Comprehensive event medical cover
 Full Insurance
 £30 million public liability event cover

LOCAL FOCUS

100+ Motocross clubs across England & Wales
 100+ Race circuits Top Tracks Compete at top AMCA owned circuits such as Nympsfield, Bevercotes, Wigstey, Upavon, Manmoel, Shobdon and Boraston

NO 1 FOR OFF-ROAD SPORT

AMCA AMATEUR MOTOR CYCLE ASSOCIATION SINCE 1932

