

THE DIRT BIKE SHOW

4-7 November
Stoneleigh Park



Europe's largest off-road show

www.dirtbikeshow.co.uk

For more details call 0844 800 6481

info@dirtbikeshow.co.uk



17-10-2010
OFFICIAL PROGRAMME
AMCA NUMBER 1 FOR OFF-ROAD SPORT



IMAGE CLAIRE BENNETT

WARNING! MOTORSPORT CAN BE DANGEROUS
ONLY CROSS THE TRACK AT THE OFFICIAL CROSSING POINT. DO NOT CROSS THE TRACK DURING RACING

Despite the organisers taking all reasonable precautions, unavoidable accidents can happen.
Please comply with instructions of Marshals and Notices. They are only concerned with your safety.

You are attending an AMCA (Amateur Motor Cycle Association) event. For more information please call 01543 466282 or visit our website

www.amca.uk.com

AMCA AMATEUR MOTORCYCLE ASSOCIATION SINCE 1932



WEB: WWW.DKOFFROAD.CO.UK

TEL: 01782 338738 EMAIL: SALES@DKOFFROAD.CO.UK

DK MOTORCYCLES, SWIFT HOUSE, LIVERPOOL ROAD (A34), NEWCASTLE UNDER LYME, STAFFORDSHIRE, ST5 9JJ



COME DOWN TO DK & SEE OUR MASSIVE SHOWROOM WE HAVE OVER 150 QUALITY USED BIKES INSTORE, FINANCE AVAILABLE



KAWASAKI MAIN DEALER

FOR ALL THE BEST PRICES ON CLOTHING, PARTS AND ACCESSORIES CALL 01782 338738 OR VISIT US AT WWW.DKOFFROAD.CO.UK



FOX 2010 RACE KITS

O'NEAL RACE KITS

SHIFT 2010 RACE KITS



LADIES FOX 2010 RACE KITS

LADIES SHIFT 2010 RACE KITS

FOX 2010 HOODIES

FOX 2010 T-SHIRTS

FOX 2010 TRAINERS



FOX 2010 RACE BOOTS

ALPINESTAR BOOTS

MX HELMETS

DELKEVIC KNEE BRACES



OIL FILTERS

MICHELIN TYRES

MAXXIS TYRES

RENTHAL BARS

CHAIN & SPROCKET KITS



CHRISTCHURCH MOTOCROSS CLUB PRESENTS.....

AUTUMN MOTOX

At CROWE HILL

Event Auth Code 1899

On Sunday 17th October 2010

By Kind Permission of Mr Richard Lowndes

TODAY'S EVENT IS SPONSORED BY:- ROSS PACKARD PAINTWORK

Officials of the Meeting

Secretary of the meeting...Tim Handscombe

Clerk of the Course...Alf Stearn (51389)

Chief Marshal...Bernie Moore

Course Marshal...Steve Elford

Lap Scorers...Lucy Stearn, Katy Stearn & Suzie Hines

Starter...Richard Hacon

Finisher...Alf Stearn

Pre Race Inspectors...Jamie Winbourne & Mark Dunning

AMCA Stewards...Alf Stearn (Purbeck) 51389

& Sandra Leach (Marshfield) 51191

First Aid by...XL Ambulance Service

Grid Reference...SU162039

Post Code...BH24 3ED

| AMCA PLACINGS & POINTS | |
|---------------------------|----|
| 1st | 60 |
| 2nd | 54 |
| 3rd | 50 |
| 4th | 47 |
| 5th | 45 |
| 6th | 43 |
| 7th | 41 |
| 8th | 39 |
| 9th | 37 |
| 10th | 35 |
| 11th | 33 |
| 12th | 31 |
| 13th | 29 |
| 14th | 27 |
| 15th | 26 |
| 16th | 25 |
| 17th | 24 |
| 18th | 26 |
| 19th | 22 |
| 20th | 21 |
| 21st | 20 |
| 22nd | 19 |
| 23rd | 18 |
| 24th | 17 |
| 25th | 16 |
| 26th | 15 |
| 27th | 14 |
| 28th | 13 |
| 29th | 12 |
| 30th | 11 |
| 31st | 10 |
| 32nd | 9 |
| 33rd | 8 |
| 34th | 7 |
| 35th | 6 |
| 36th | 5 |

TIMETABLE OF EVENTS

PRI: 8.00-9.00 AM

PRACTICE: 9.45 AM

INTER JUNIORS

EXPERTS

JUNIORS

SENIORS

RACING: 10.45 AM

ORDER OF RACING

| | | | |
|----------|-----------|-----------|-----------------------------|
| 1 | 9 | 17 | INTER JUNIORS |
| 2 | 10 | 18 | MX1 EXPERTS |
| 3 | 11 | 19 | MX2 JUNIORS UNDER 18 |
| 4 | 12 | 20 | MX1 SENIORS |
| 5 | 13 | 21 | MX1 JUNIORS |
| 6 | 14 | 22 | MX2 EXPERTS |
| 7 | 15 | 23 | MX2 SENIORS |
| 8 | 16 | 24 | MX2 JUNIORS |

PRESENTATION OF AWARDS

The winning rider in each class is the rider with the highest number of points. All races shown in the programme will count. Any additional races not shown in the programme will not count towards the overall position. Any ties will be settled by the results of the last race in each class.

INTER JUNIORS

WHITE NUMBERS ON BLACK PLATES

| No | Name | | Race 1 | Race 2 | Race 3 | Total | Final | Mac | CC | Club |
|--------------|-----------------|------|--------|--------|--------|-------|-------|-----|----|------|
| 11 | Tallon Leach | (11) | | | | | | SUZ | 85 | MARS |
| 126 | Elliot Dowell | (11) | | | | | | KTM | 85 | DEV |
| 259 | Scott Brown | (15) | | | | | | KAW | 85 | DEV |
| 330 | Callum Hall | (12) | | | | | | KAW | 85 | BATH |
| 470 | Harry Wieczorek | (11) | | | | | | KAW | 85 | MW |
| Late Entries | | | | | | | | | | |

MXI EXPERTS

BLACK NUMBERS ON YELLOW PLATES

| No | Name | Race 1 | Race 2 | Race 3 | Total | Final | Mac | CC | Club |
|-----|-----------------|--------|--------|--------|-------|-------|-----|------|------|
| 8 | Richard Meakin | | | | | | | | HILL |
| 61 | Mark Chivers | | | | | | HON | 250 | BATH |
| 76 | Justin Parsons | | | | | | YAM | 450F | BATH |
| 95 | Ben Smith | | | | | | KTM | 250 | NW |
| 102 | Matthew Clement | | | | | | KTM | 250 | BATH |
| 103 | Shaun Hayles | | | | | | YAM | 250 | DEV |
| 171 | Stephen Elford | | | | | | HON | 450F | CHRI |
| 174 | Aaron Read | (17) | | | | | | | DEV |
| 209 | Luke Smith | (17) | | | | | YAM | 250 | C/S |
| 359 | Mark Dunning | | | | | | KTM | 250 | CHRI |
| 782 | Kevin Weeks | | | | | | SUZ | 450F | BATH |

Late Entries

ROSS PACKARD PAINTWORK
Specialising in quality paintwork

TEL: 01425 - 615039 MOB: 07789 - 801928
 FAX: 01425 - 638846 ADD: Core Road Industrial Estate
 New Milton
 Hants
 BH25 6SG

WEB: www.ross-packard.co.uk
 EMAIL: info@ross-packard.co.uk

Vehicle body repairs to the highest standard with first-rate customer care

ROSS PACKARD PAINTWORK LTD
TEL: 01425 615039
WEB: WWW.ROSS-PACKARD.CO.UK

BODY/PAINT REPAIRS
SERVICING
M.O.T'S
TYRES
AIR CONDITIONING
MECHANICAL REPAIRS
ALLOY WHEEL REFURBISHMENT
FREE ESTIMATES

MX2 JUNIORS UNDER 18 YEARS OLD

WHITE NUMBERS ON BLACK PLATES

| No | Name | | Race 1 | Race 2 | Race 3 | Total | Final | Mac | CC | Club |
|-----|------------------|------|--------|--------|--------|-------|-------|-----|------|------|
| 52 | Liam Woolford | (16) | | | | | | KAW | 125 | DEV |
| 58 | Jordan Reid | (16) | | | | | | SUZ | 85 | MARS |
| 91 | Joshua Smith | (14) | | | | | | YAM | 125 | C/S |
| 124 | Daniel Crocker | (16) | | | | | | KAW | 125 | BATH |
| 182 | Jonathon Hoppner | (15) | | | | | | KTM | 125 | BER |
| 213 | Callum Wicks | (16) | | | | | | YAM | 250F | STRE |
| 214 | Jamie Oram | (17) | | | | | | KAW | 250F | DEV |
| 217 | Zachary Clark | (15) | | | | | | KTM | 125 | DEV |
| 222 | Elliot Fenton | (13) | | | | | | KTM | 125 | BATH |
| 232 | Ashley Shenton | (17) | | | | | | KAW | 250F | DEV |
| 310 | Jake Snook | (16) | | | | | | SUZ | 85 | MARS |
| 336 | Samuel Perrin | (17) | | | | | | KTM | 144 | BRID |
| 422 | Luke Watkins | (14) | | | | | | YAM | 250F | C/S |
| 483 | Daniel Garbutt | (15) | | | | | | | | DEV |
| 485 | Catherine King | (15) | | | | | | HON | 150F | DEV |
| 608 | Joshua Pearce | (16) | | | | | | YAM | 144 | STRE |
| 715 | Liam Oldfield | (16) | | | | | | KTM | 144 | C/S |

Late Entries



Cold Air Solutions

Refrigeration, Air Conditioning, Heating & Ventilation Services

14 Mountbatten Road, Totton, Southampton SO40 3FX. Mob: 07855 958025

E-mail: guy.turton@hotmail.com

AIR CONDITIONING

Installation, Service & Repairs
Cooling Solutions for:

- Offices
- Shops
- Restaurants
- Pubs & Clubs
- Loft Conversions
- Bedrooms
- Conservatories

REFRIGERATION

Installation, Service & Repairs
of Commercial:

- Fridges & Freezers
- Walk-in Cold Rooms
- Bottle coolers
- Cellar Coolers
- Display Units
- Chilled water systems

Cold Air Solutions

Refrigeration, Air Conditioning, Heating & Ventilation Services



Guy Turton

14 Mountbatten Road, Totton, Southampton SO40 3FX

Mob: 07855 958025

E-mail: guy.turton@hotmail.com

MXI SENIORS

WHITE NUMBERS ON RED PLATES

| No | Name | Race 1 | Race 2 | Race 3 | Total | Final | Mac | CC | Club |
|-----|-------------------|--------|--------|--------|-------|-------|-----|------|------|
| 25 | Jeremy Willcox | | | | | | SUZ | 250 | BATH |
| 31 | Lee Mason | | | | | | KTM | 525F | UPAV |
| 35 | David Snook | | | | | | | | MARS |
| 47 | Timothy Handscomb | | | | | | HON | 450F | CHRI |
| 50 | Peter Wentworth | | | | | | KTM | 450F | CHRI |
| 66 | Dean Sellars | | | | | | HON | 450F | C/S |
| 107 | Colin Smith | | | | | | KTM | 250 | NW |
| 133 | Mark Blackman | | | | | | SUZ | 450F | DEV |
| 173 | Darren Richardson | | | | | | HON | 450F | FAR |
| 178 | Andrew Wells | | | | | | HON | 450F | STRD |
| 191 | Craig Martin | | | | | | HON | 450F | EB |
| 262 | Martin Oldfield | | | | | | | | C/S |
| 307 | Luke Stephens | | | | | | SUZ | 450F | CHRI |
| 315 | Andrew Wren | | | | | | KAW | 450F | C/S |
| 320 | Steve Hall | | | | | | YAM | 450F | BATH |
| 323 | Ben Mason | | | | | | HON | 250 | UPAV |

(17)

Late Entries

T. B. HANDSCOMB



BUILDING SERVICES

From Planning to Completion

☎ 01202-434294

☎ 07074 434294

MXI JUNIORS

WHITE NUMBERS ON BLACK PLATES

| No | Name |
|-----|-----------------|
| 1 | Simon Nicholls |
| 20 | Simon Gracia |
| 22 | Shaun Hiscox |
| 58 | Mark Grey |
| 73 | Quinton Tettmar |
| 76 | Eric Parsons |
| 79 | Ian May |
| 131 | Richard Davis |
| 154 | Andy Johnson |
| 158 | Lewis Chapman |
| 244 | Douglas Crocker |
| 247 | Quinton Perrin |
| 251 | Chris Mitchell |
| 270 | Justin Cadman |
| 350 | Charles Foster |
| 853 | Steve Cole |

| Race 1 | Race 2 | Race 3 | Total | Final |
|--------|--------|--------|-------|-------|
| | | | | |
| | | | | |
| | | | | |
| | | | | |
| | | | | |
| | | | | |
| | | | | |
| | | | | |
| | | | | |
| | | | | |
| | | | | |
| | | | | |
| | | | | |
| | | | | |
| | | | | |
| | | | | |
| | | | | |
| | | | | |
| | | | | |
| | | | | |
| | | | | |
| | | | | |
| | | | | |
| | | | | |
| | | | | |

| Mac | CC | Club |
|-----|------|------|
| KAW | 450F | NW |
| KTM | 525F | CHRI |
| HON | 500 | DEV |
| HON | 280F | C/S |
| YAM | 250 | PUR |
| YAM | 250 | BATH |
| SUZ | 250 | PUR |
| | | C/S |
| YAM | 450F | C/S |
| | | BER |
| KAW | 250 | BATH |
| SUZ | 450F | CHRI |
| KAW | 450F | CHRI |
| YAM | 450F | CHRI |
| HON | 450F | CHRI |
| KTM | 250 | CHRI |

Late Entries

NEW MILTON TYRE CO

**FAST FRIENDLY SERVICE
PERSONAL ATTENTION
HIGHLY COMPETITIVE PRICES**
Company Car & National Fleet Specialists
HUGE STOCKS ALL MAIN MAKES

**METICULOUS ON OR OFF CAR WHEEL BALANCING
ACCURATE WHEEL ALIGNMENT
ALLOY WHEEL SPECIALISTS
FREE TYRE SAFETY CHECK**



**TYRES
BATTERIES**

EST. OVER 30 YEARS



(01425) 613647

131-133 Old Milton Road, (Near to Shops), New Milton

OPEN 8.30-6.00 MON-FRI, 8.30-5.00 SAT

MX2 EXPERTS

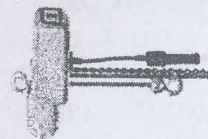
YELLOW NUMBERS ON BLUE PLATES

| No | Name | Race 1 | Race 2 | Race 3 | Total | Final | Mac | CC | Club |
|-----|---------------------|--------|--------|--------|-------|-------|-----|------|------|
| 46 | Carl Dezis | | | | | | SUZ | 250F | BATH |
| 48 | Joshua James | | | | | | SUZ | 125 | BS |
| 51 | James Knatchbull | | | | | | KTM | 144 | BATH |
| 61 | Ian Norman | | | | | | YAM | 125 | FAR |
| 129 | Haydn Crocker | | | | | | KAW | 125 | BATH |
| 138 | Ricky Britton (17) | | | | | | KTM | 144 | MARS |
| 140 | Joshua Roddick (16) | | | | | | KTM | 144 | STRE |
| 227 | Josh Broadway (14) | | | | | | YAM | 125 | BATH |
| 228 | Christopher Cowler | | | | | | KAW | 125 | BATH |
| 229 | Oliver Roddick (16) | | | | | | HON | 250F | STRE |
| 232 | Wayne Meacham | | | | | | KAW | 250F | MARS |
| 338 | Ben Haggerty (16) | | | | | | TM | 125 | DEV |

Late Entries

ABLE

LIFTING EQUIPMENT (SOUTHERN) LTD



LIFTING EQUIPMENT SPECIALISTS

Training

125 tonne in-house and on site testing facility

Manufacturers of wire rope and chain slings

Suppliers of chainblocks, electric hoists and cranes

Servicing and repair carried out on all lifting equipment

Fibre, webbing and roundslings for all applications

Full range of hire equipment available

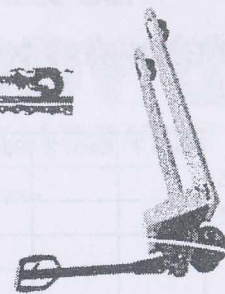
A whole tool range

SFALLY
PRODUCTS

DRAPER

UNITS 6 & 7, SOVEREIGN BUSINESS PARK, POOLE, DORSET
TEL: 01202 681156 FAX: 01202 668963

www.ablelifting.co.uk



DESIGNED BY

**ADRENALINE
DESIGNS**

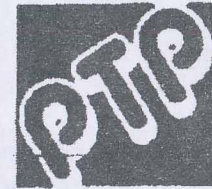
WWW.ADRENALINEDESIGNS.CO.UK

MX2 SENIORS

WHITE NUMBERS ON BLUE PLATES

| No | Name | | Race 1 | Race 2 | Race 3 | Total | Final | Mac | CC | Club |
|-----|----------------------|------|--------|--------|--------|-------|-------|-----|------|------|
| 154 | Daniel Britton | (15) | | | | | | KTM | 125 | MARS |
| 165 | Ryan Davis | (14) | | | | | | YAM | 125 | BATH |
| 244 | Joe Cross | | | | | | | YAM | 250F | CHRI |
| 264 | Christopher Holloway | | | | | | | YAM | 250F | DEV |
| 266 | Lewis Dowell | (17) | | | | | | KTM | 125 | DEV |
| 268 | Charlie Bowyer | (16) | | | | | | | | DEV |
| 270 | Luke Parsons | (14) | | | | | | YAM | 85 | BATH |
| 323 | Dom Aggett | (17) | | | | | | HON | 125 | BATH |
| 354 | Ryan Martin | (15) | | | | | | HON | 250F | DEV |
| 355 | Hannah Winbourne | (15) | | | | | | SUZ | 85 | CHRI |
| 359 | Michael Burfield | (13) | | | | | | KTM | 85 | MARS |
| 377 | Simon Dunning | | | | | | | KTM | 250F | CHRI |

Late Entries



BODY WORKS

EXPERTS IN THE ART OF AUTOMOTIVE REPAIR

YEOMANS WAY
YEOMANS INDUSTRIAL ESTATE
BOURNEMOUTH
BH8 0BJ

TEL: 01202 512288
FAX: 01202 512218

TO JOIN THE CHRISTCHURCH MX CLUB

CONTACT MIKE TORAH TODAY AT RACE CONTROL

OR ON 01425 618320

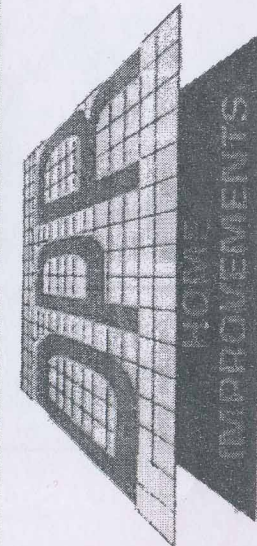
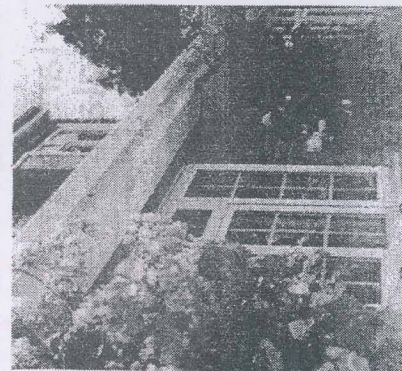
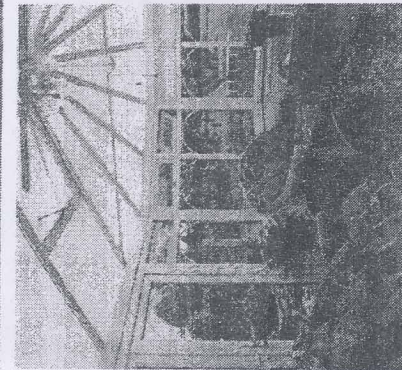
OR ALTERNATIVELY GO ALONG TO

CHAPEL GATE SPORTS CLUB

BEHIND BOURNEMOUTH AIRPORT

EVERY OTHER TUESDAY AFTER 8.30PM

DPR HOME IMPROVEMENTS



DPR Home Improvements,
New Milton Showroom and Head Office,
19 Station Road, New Milton, Hampshire BH25 6HN
Tel: 01425 612391
Freephone 0800 092 1919

MX2 JUNIORS

WHITE NUMBERS ON BLACK PLATES

| No | Name | Race 1 | Race 2 | Race 3 | Total | Final | Mac | CC | Club |
|-----|-----------------|--------|--------|--------|-------|-------|-----|------|------|
| 190 | Stephen Barnes | | | | | | KTM | 250F | BER |
| 216 | Matthew Gurke | | | | | | HON | 250F | BATH |
| 339 | Mike Matthews | | | | | | YAM | 250F | CHRI |
| 341 | Steven Moore | | | | | | YAM | 250F | CHRI |
| 602 | Douglas Crocker | | | | | | KAW | 125 | BATH |
| 630 | Alan Morris | | | | | | KTM | 250F | NW |
| 951 | Dean Partridge | | | | | | KTM | 250F | BER |

Late Entries

LIKE WHAT YOU SEE?

For more info including the nearest club to you go to:

www.amca.uk.com
JOIN A CLUB TODAY!

Regulated +
Grassroots +
Nationwide +
Friendly & Family Focussed +
Safe +
Fun +

Budget Racing the AMCA way

Compete from as little as **£27.00** per week

30 events per annum

1. Annual licence: **£140.00**

2. Weekly entry fee: **£20.00**

TOTAL: £810.00

Weekly cost: **£27.00**

(AMCA Transponder required, £70.00 before 31st March, 2010)



AMCA

Motocross provides riders with cost effective, competitive racing catering for all ages (start racing from nine years!) and abilities. Feel like getting involved but not racing? Clubs are always looking for volunteers to assist with the running of events.

PEACE OF MIND

Structured Events

Fully trained event management teams

Comprehensive event medical cover

Full Insurance

£30 million public liability event cover

IMAGE CHRIS HUDSON

LOCAL FOCUS

100+ Motocross clubs across England & Wales

100+ Race circuits

Top Tracks Compete at top AMCA owned circuits such as Nympsfield, Bevercotes, Wigsley, Upavon, Manmoel, Shobdon and Boraston