

# INTERNATIONAL DIRT BIKE SHOW 2011

3-6 November  
Stoneleigh Park



Europe's largest off-road show

www.dirtbikeshow.co.uk

For details call 0844 800 6481

info@dirtbikeshow.co.uk

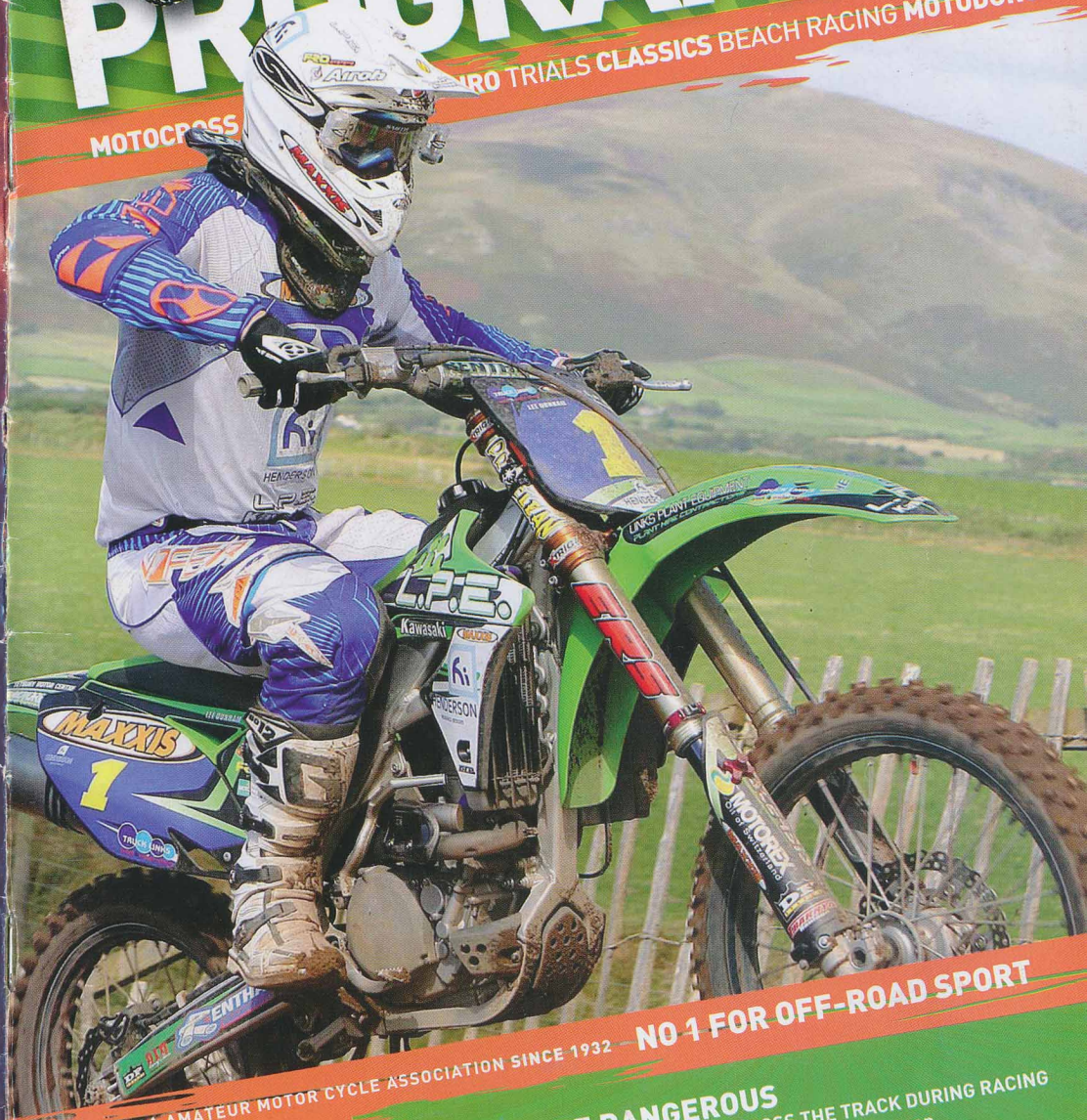
MEDIA PARTNERS



# OFFICIAL PROGRAMME

MOTOCROSS

TRIALS CLASSICS BEACH RACING MOTODURO



AMCA AMATEUR MOTOR CYCLE ASSOCIATION SINCE 1932 - NO 1 FOR OFF-ROAD SPORT

**WARNING! MOTORSPORT CAN BE DANGEROUS**  
ONLY CROSS THE TRACK AT THE OFFICIAL CROSSING POINT. DO NOT CROSS THE TRACK DURING RACING  
Despite the organisers taking all reasonable precautions, unavoidable accidents can happen.  
Please comply with instructions of Marshals and Notices. They are only concerned with your safety.

www.amca.uk.com

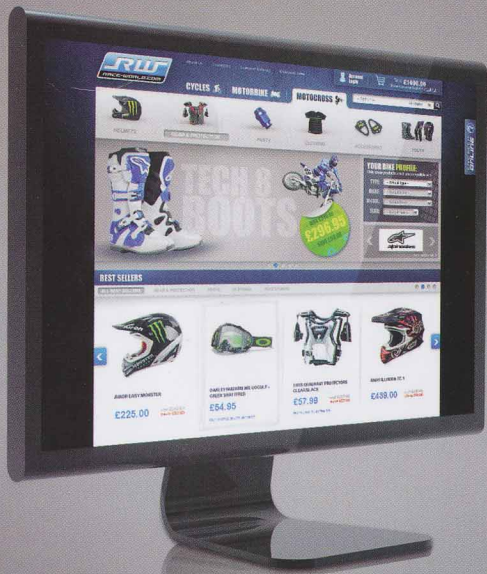


**Exclusive**  
Retail Partner of the AMCA

# 10% OFF EVERY Order Placed

**Discount available  
ALL SEASON**

Offer is exclusive to all  
current AMCA licence  
holders.



For details on how to claim your discount visit:  
[www.race-world.com/AMCA](http://www.race-world.com/AMCA)

01952 540 030  
amca@race-world.com



CHRISTCHURCH MOTOCROSS CLUB PRESENTS.....

# SUE MOORE MEMORIAL MEETING

At CROWE

Event Auth Code 3067

On Sunday 23rd October 2011

By Kind Permission of  
Mr Richard Lowndes

**TODAY'S EVENT IS SPONSORED BY:-  
NEW MILTON TYRE COMPANY**

Officials of the Meeting

Secretary of the meeting...Tim Handscombe

Clerk of the Course...Bernie Moore (51591)

Chief Marshal...Ian Williams

Course Marshal...Jamie Winbourne

Lap Scorers...Lucy Stearn, Katy Stearn & Suzie Hines

Starter...Richard Hacon

Finisher...Alf Stearn

Pre Race Inspectors...Jamie Winbourne & Mark Dunning

AMCA Stewards...Alf Stearn (Purbeck) 51389

& Keith Leach (Marshfield) 35464

First Aid by...XL Ambulance Service

Grid Reference...SU162039

Post Code...BH24 3ED

**AMCA  
PLACINGS & POINTS**

1st	60
2nd	54
3rd	50
4th	47
5th	45
6th	43
7th	41
8th	39
9th	37
10th	35
11th	33
12th	31
13th	29
14th	27
15th	26
16th	25
17th	24
18th	26
19th	22
20th	21
21st	20
22nd	19
23rd	18
24th	17
25th	16
26th	15
27th	14
28th	13
29th	12
30th	11
31st	10
32nd	9
33rd	8
34th	7
35th	6
36th	5

**TIMETABLE OF EVENTS**

**PRI: 8.00-9.00 AM**

**PRACTICE: 9.45 AM**

**SENIORS**

**JUNIORS**

**EXPERTS**

**INTER JUNIORS**

**RACING: 10.45 AM**

**ORDER OF RACING**

<b>1</b>	<b>6</b>	<b>11</b>	<b>SENIORS UNLIMITED</b>
<b>2</b>	<b>7</b>	<b>12</b>	<b>MX2 JUNIORS UNDER 18</b>
<b>3</b>	<b>8</b>	<b>13</b>	<b>EXPERTS UNLIMITED</b>
<b>4</b>	<b>9</b>	<b>14</b>	<b>JUNIORS UNLIMITED</b>
<b>5</b>	<b>10</b>	<b>15</b>	<b>INTER JUNIORS</b>

**RIDERS WILL BE SCORED SEPERATELY MX1 & MX2**

**PRESENTATION OF AWARDS**

**The winning rider in each class is the rider with the highest number of points. All races shown in the programme will count. Any additional races not shown in the programme will not count towards the overall position. Any ties will be settled by the results of the last race in each class.**

**NEW MILTON TYRE CO**

**TYRES  
BATTERIES**

EST. OVER 30 YEARS



**FAST FRIENDLY SERVICE  
PERSONAL ATTENTION  
HIGHLY COMPETITIVE PRICES**  
Company Car & National Fleet Specialists  
**HUGE STOCKS ALL MAIN MAKES**

**METICULOUS ON OR OFF CAR WHEEL BALANCING  
ACCURATE WHEEL ALIGNMENT  
ALLOY WHEEL SPECIALISTS  
FREE TYRE SAFETY CHECK**



**(01425) 613647**

131-133 Old Milton Road (Near to Shops), New Milton

**OPEN 8.30-6.00 MON-FRI 8.30-5.00 SAT**

## SENIORS UNLIMITED

**MX2:- WHITE NUMBERS ON BLUE PLATES**

**MX1:- WHITE NUMBERS ON RED PLATES**

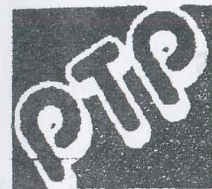
### MX2:-

No	Name		Race 1	Race 2	Race 3	Total	Final	Mac	CC	Club
70	Jake Snook	(17)						SUZ	125	MARS
80	Grant Tucker	(17)						YAM	250F	BATH
176	James Chandler							YAM	125	DEV
256	Steven Moore							YAM	250F	CHRI
268	Charlie Bowyer	(17)								DEV
270	Luke Parsons	(16)						YAM	85	BATH
355	Hannah Winbourne	(16)						YAM	250F	CHRI
377	Simon Dunning							KTM	250F	CHRI
777	Daniel Day							KAW	250F	DEV

### MX1:-

No	Name		Race 1	Race 2	Race 3	Total	Final	Mac	CC	Club
5	Graham Lovell							KTM	450F	UPAV
25	Jeremy Willcox							SUZ	450F	BATH
31	Lee Mason							KTM	525F	UPAV
35	David Snook							HVA	450F	MARS
47	Timothy Handscomb							HON	450F	CHRI
50	Peter Wentworth							KTM	450F	CHRI
52	Jason Stearn							YAM	450F	PUR
102	Alex Merefield							SUZ	450F	CHRI
111	Martyn Hobbs							HON	450F	NW
307	Justin Cadman							YAM	450F	CHRI
323	Ben Mason							HON	250	UPAV
443	Matthew Clement							KTM	250	BATH
445	Edward Date							SUZ	250	RAG

Late Entries



# BODY WORKS

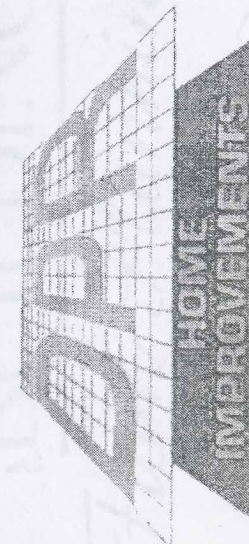
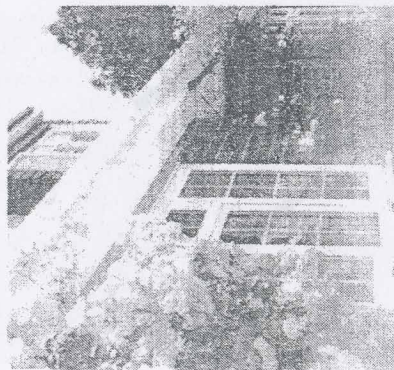
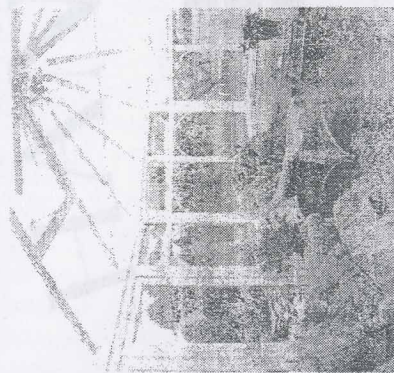
EXPERTS IN THE ART OF AUTOMOTIVE REPAIR

YEOMANS WAY  
YEOMANS INDUSTRIAL ESTATE  
BOURNEMOUTH  
BH8 0BJ

TEL: 01202 512288

FAX: 01202 512218

DPR HOME IMPROVEMENTS



DPR Home Improvements,  
New Milton Showroom and Head Office,  
19 Station Road, New Milton, Hampshire BH25 6HN

Tel: 01425 612391

Freephone 0800 092 1919



**EXPERTS UNLIMITED**

**MX2:- YELLOW NUMBERS ON BLUE PLATES**

**MX1:- BLACK NUMBERS ON YELLOW PLATES**

**MX2:-**

No	Name	Race 1	Race 2	Race 3	Total	Final	Mac	CC	Club
51	James Knatchbull						KTM	144	BATH
128	Rory O Connell (16)						HON	250F	DEV
140	Joshua Roddick (17)						HON	250F	STRE
216	Tom White								CHRI
228	Christopher Cowler						KTM	144	BATH
229	Oliver Roddick (17)						HON	250F	STRE
239	Jamie Pellow						HON	250F	DEV
284	Ryan Davis (15)						YAM	250F	BATH
776	Jack Newbury (15)						KAW	250F	NW

**MX1:-**

No	Name	Race 1	Race 2	Race 3	Total	Final	Mac	CC	Club
9	Richard Meakin						HON	450F	EB
76	Justin Parsons						YAM	450F	BATH
92	David Hopkins						KTM	450F	EB
103	Shaun Hayles						YAM	250	DEV
171	Stephen Elford						HON	450F	CHRI
181	Andrew Bowles						KAW	450F	MARS
205	Paul Wiczorek						HON	450F	MW
293	Jesse Say						KTM	450F	BATH
359	Mark Dunning						KTM	250	CHRI
372	Adam Cook						HON	450F	RAG
451	Luke Stephens						SUZ	450F	CHRI
452	Simon Bracey						HVA	450F	MARS

Late Entries

FREE ESTIMATES  
ALLOY WHEEL REPAIRS  
MECHANICAL REPAIRS  
AIR CONDITIONING  
TYRES  
M.O.T'S

**Main Dealer Standards  
Not Main Dealer Prices**

**SERVICING FROM £89 • SERVICE & MOT FROM £138**

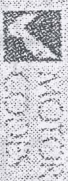
Prices inclusive of Parts, Labour & VAT and covers most makes & models & diesel MOTs

**FREE:**

Local Collection & Delivery Service • MOT Re-Tests • Hand wash with every service

Exhausts - Batteries - Brakes - Routine Maintenance

**williamsbridge**



**RMI**

**01425 620660**

25 Station Road, New Milton BH25 6HN  
[www.williamsbridge.co.uk](http://www.williamsbridge.co.uk)

Prices based on 4 cylinder petrol engine up to 1.6 using standard parts. Platinum spark plugs may incur extra cost. Please call for quote on larger engines and diesel engines. MOT Re-Tests are subject to terms & conditions

# ROSS PACKARD PAINTWORK

Specialising in quality paintwork

TEL: 01425 - 615039

MOB: 07789 - 801928

FAX: 01425 - 638846

ADD: Gore Road Industrial Estate

WEB: [www.ross-packard.co.uk](http://www.ross-packard.co.uk)

Hants

EMAIL: [info@ross-packard.co.uk](mailto:info@ross-packard.co.uk)

BH25 6SG

Vehicle body repairs to the highest standard with first-rate customer care

## ROSS PACKARD PAINTWORK LTD

TEL: 01425 615039

WEB: [WWW.ROSS-PACKARD.CO.UK](http://WWW.ROSS-PACKARD.CO.UK)

**BODY/PAINT REPAIRS**

**SERVICING**

**M.O.T'S**

**TYRES**

**AIR CONDITIONING**

**MECHANICAL REPAIRS**

**ALLOY WHEEL REFURBISHMENT**

**FREE ESTIMATES**

## JUNIORS UNLIMITED

### WHITE NUMBERS ON BLACK PLATES

#### MX2:-

No	Name	Race 1	Race 2	Race 3	Total	Final	Mac	CC	Club
213	Callum Wicks						YAM	250F	STRE
214	Jamie Oram						KAW	250F	DEV
236	Jack Walters						YAM	125	BATH
334	Andrew Mullins						KTM	125	BATH
335	Paul Kirby						KTM	125	BATH
339	Mike Matthews						YAM	250F	CHRI
341	Steve Ingram						SUZ	125	BATH

#### MX1:-

No	Name	Race 1	Race 2	Race 3	Total	Final	Mac	CC	Club
6	Keith Mortimer						HON	450F	DEV
10	Richard Hacon								CHRI
22	Shaun Hiscox						HON	500	DEV
29	Darren Roberts						KTM	250	NW
73	Quinton Tettmar						HON	450F	PUR
247	Quinton Perrin						YAM	450F	CHRI
853	Steve Cole						KTM	250	CHRI

Late Entries

TO JOIN THE CHRISTCHURCH MX CLUB  
 CONTACT MIKE TORAH TODAY AT RACE CONTROL  
 OR ON 01425 618320  
 OR ALTERNATIVELY GO ALONG TO  
 CHAPEL GATE SPORTS CLUB  
 BEHIND BOURNEMOUTH AIRPORT  
 EVERY OTHER TUESDAY AFTER 830PM

**SAFETY NOTICE**

Warning to all riders  
 Please be advised that the removal of feet from pegs  
 and hands from bars purely for the purpose of posing  
 is prohibited – this type of activity could present a  
 danger to you and fellow riders. Should this activity  
 be seen by an AMCA official you  
 could face Disciplinary Action.



**www.tidy cars.co.uk**

**Tel: 01425 628827 • Southern Lane, New Milton BH25 7JE  
 CARS BOUGHT FOR CASH • PART EXCHANGE WELCOME**

MINI One Countryman 1.6 Diesel, 2010 (60), 1 owner, £30 tax, 64.2 mpg... £15,995  
 FORD Focus 1.6 Style Auto, 2008 (58), 5dr, 27k, fsh, air con, ocean blue... £5,995  
 VAUXHALL Astra 1.8 Club Auto, 2009 (09), 5dr, 19k, 1 owner, fsh... £5,395  
 FORD KA 1.3 Style Climmate, 2008 (08), 3dr, 1 owner, fsh, 1,400 miles!... £4,695  
 RENAULT Clio 1.2 Authentique, 2005 (05), 5dr, 1 owner, fsh, 10k miles... £3,895  
 VAUXHALL Corsa 1.0 Energy, 2004 (04), 3dr, silver, 41k, fsh, alloys, air con... £2,995

**PART EXCHANGES TO CLEAR**

BMW 318 ci SE, 2002 (52), 72k miles, silver, alloys, rear park sensors... £3,695  
 CHEVROLET Kalos 1.2 SE, 2006 (56), 5dr, 42k, pas, air con, edw... £2,195  
 BMW 323i SE Touring Auto, 1998 (R), new MOT, black, alloys, sunroof... £1,295  
 SKODA Octavia 1.6 GLXi, 2000(W), 5dr, new MOT, drives well... £895

**See our website for more cars at great prices**



## INTER JUNIORS

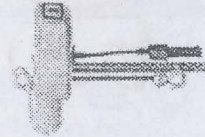
### WHITE NUMBERS ON BLACK PLATES

No	Name	Race 1	Race 2	Race 3	Total	Final	Mac	CC	Club
11	Tallon Leach (12)						SUZ	85	MARS
126	Elliot Dowell (12)						KTM	85	DEV
133	Thor Tucker (11)						HON	150F	BATH
223	Jack Roebuck (14)						YAM	85	NW
316	Thomas Keen (13)						KAW	85	DEV
470	Harry Wieczorek (12)						KAW	85	MW
472	Adam Moore (13)						KAW	85	NW
475	William Davis (15)						HON	85	DEV

Late Entries

# ABLE

## LIFTING EQUIPMENT (SOUTHERN) LTD



LIFTING EQUIPMENT SPECIALISTS

Training

125 tonne in-house and on site testing facility

Manufacturers of wire rope and chain slings

Suppliers of chainblocks, electric hoists and cranes

Servicing and repair carried out on all lifting equipment

Fibre, webbing and roundslings for all applications

Full range of hire equipment available

A whole tool range



UNITS 6 & 7, SOVEREIGN BUSINESS PARK, POOLE, DORSET  
TEL: 01202 681156 FAX: 01202 668963

[www.ablelifting.co.uk](http://www.ablelifting.co.uk)



DESIGNED BY

ADRENALINE  
DESIGNS

[WWW.ADRENALINEDESIGNS.CO.UK](http://WWW.ADRENALINEDESIGNS.CO.UK)

PLEASE PUT YOUR  
LITTER IN A BIN OR  
TAKE IT HOME WITH  
YOU!!!



For more info including the nearest club to you go to:  
**www.amca.uk.com**  
JOIN A CLUB TODAY!

# LIKE WHAT YOU SEE?

- Regulated +
- Grassroots +
- Nationwide +
- Friendly & Family Focussed +
- Safe +
- Fun +

### Budget Racing the AMCA way

Compete from as little as **£27.00** per week

30 events per annum

1. Annual licence: **£140.00**

2. Weekly entry fee: **£22.00**

**TOTAL: £810.00**

Weekly cost: **£27.00**

### AMCA

motocross provide riders with cost effective, competitive racing catering for all ages (start racing from nine years!) and abilities.

Feel like getting involved but not racing?

Clubs are always looking for volunteers to assist with the running of events.

### LOCAL FOCUS

**100+** Motocross clubs across England & Wales

**100+** Race circuits

**Top Tracks** Compete at top AMCA owned circuits such as Nympsfield, Bevercotes, Wigsley, Upavon, Manmoel, Shobdon and Boraston

IMAGE ANDREW WILEY

### PEACE OF MIND

**Structured Events**

**Fully trained event management teams**

**Comprehensive event medical cover**

**Full Insurance**

**£30 million public liability event cover**