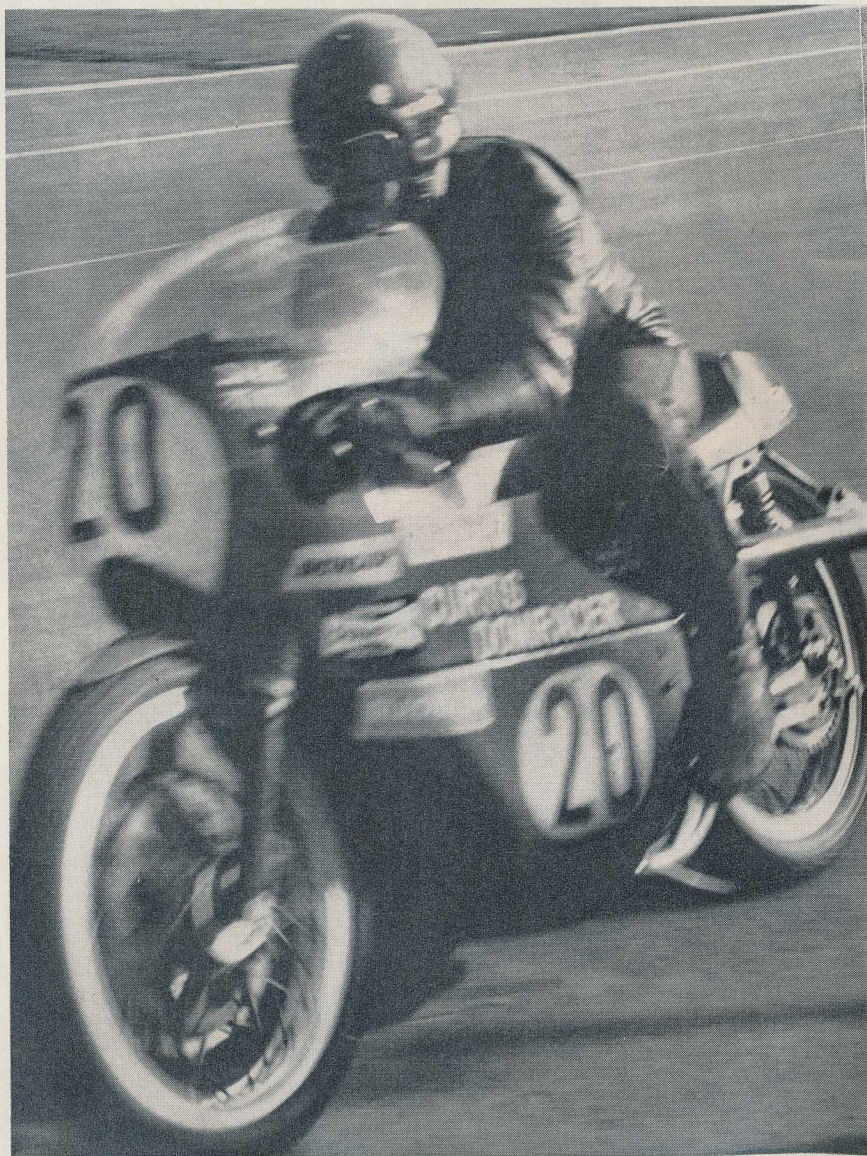


C. Mortimer. Winner 250 cc and 350 cc event Easter SE Centre Meeting 1970



Today's Racing

National Road Race Meeting for Motor Bicycles (Solos) and Motor Cycles with Sidecars.

The Meeting is held under the General Competition Rules of the ACU together with the Supplementary Regulations of the South-Eastern Centre Auto-Cycle Union.

Permit No. ACU 292
PCL No. 6.

Contents

- 1 Today's Racing
- 2 Officials
- 3 Programme
- 3 Awards
- 4 Palace Portrait
- 6 Palace '70
- 9 Flag Signals
- 9 Acknowledgements
- Crystal Palace
(coloured inset)
- 10 Lap Records
- 11 Lap Speed Table
- 12 Map of Circuit
- 17 Race 1
- 18 Race 2
- 19 Race 3
- 20 Race 4
- 21 Race 5
- 22 Race 6
- 24 Race 7
- 25 Race 8
- 26 Race 9
- 27 Race 10
- 28 Race 11
- Travel Guide
(inside back cover)

There are three solo races today when the powerful 750 cc 'twins and triples' will be seen in action, challenged by the ever reliable 500 cc singles. British Champion Peter Williams will wheel out the latest Norton for Race 6, but he will need to produce his top form if he is to keep our Palace Portrait subject, Charlie Sanby at bay. Charlie will be on a Kuhn-Norton and he will be backed up by Pat Mahoney. Ron Chandler, current holder of the 500 cc race record for the circuit, will be mounted on a 500 cc Kawasaki three cylinder two stroke, which he has been busily developing to its top race potential during the winter months.

Martin Carney, from Wallington, will also be on one of these superfast bikes, but he escaped the British winter and spent his time racing and working in the Californian sunshine. The four stroke three cylinder brigade will be represented by Peter Butler and Dave Nixon on Boyer entered Triumph Tridents. Perhaps today will end the argument as to the most suitable mount for the testing Palace circuit. Will one of these stars on a big machine, be the first to flash past the finishing flag, or will a lightweight take the honours?

Ace riders on Japanese two strokes include Dave Browning, Rex Butcher and Barry Ditchburn.

Weslake powered machines have been chosen by Martyn Ashwood and Graham Bailey, now happily back on the track after a long lay-off, and still unchallenged as the fastest Metropolitan Policeman!

Tom Kirby's latest recruit, Jim Harvey will have one of the immaculate Kirby Metisse 500 cc singles for these races and Tom who is renowned for finding winners, predicts great things for the Colchester youngster.

Today's Racing (continued)

The Racing Programme is organised by the South Eastern Centre of the Auto-Cycle Union.

Officials

Stewards of the Meeting

ACU: T. E. Ryan

SE Centre: A. Anastasio,

H. Woodrow

Judge

D. McNelly

Scrutineer

W. F. Beckett

Timekeepers

H. W. Shuttleworth

(International) in charge

Starter

J. Walby

Announcer

A. Robinson

Chief Marshal

K. Phillips

Clerk of the Course

T. E. Hubbuck

Assistant Clerk of the Course

S. T. Mellish

Secretary of the Meeting

B. S. Bonny,

c/o 75 Tilehurst Road,

London S.W.18

Assistant Secretary of the Meeting

E. J. Sawtell

Press Officer

Sean Toolan

GLC Press Office

Circuit Manager

Allan Tyler

GLC Parks Dept.

The results of these races are impossible to forecast, but it is most unlikely that there will be a run away victory for anyone! The opening solo race will be for the 250 cc class and features a host of stars including Dave Browning, Rex Butcher and Pat Mahoney, all of whom will be mounted on the fantastically fast Yamahas. Rapidly improving riders to watch out for in this race are Chris McGahan on a Suzuki and Alan Dunscombe who will be astride one of Vic Camp's Ducatis.

Most of these aces will be out again for the 350 cc race, and the massive Japanese threat will be strengthened by the first appearance this afternoon of Barry Ditchburn on a Ted Broad prepared Yamaha.

Martin Carney, who recently returned from America, will be on a Yamsel, that superb America will be on a Yamsel, that superb combination of Yamaha engine power and Colin Seeley frame.

Junior Manx Grand Prix winner, Clive Brown pins his faith on Sid Mularney's Norton, and should be well up among the leaders. Throughout the afternoon, heats of the sidecar class will reduce the large entry to a mere dozen for the final. The Heats always produce plenty of the excitement we have come to expect from the threewheelers at the Palace, and the Final is certain to be a thrilling climax. Midlanders, Peter Brown and Mick Boddice must start as favourites, but circuit regulars, Jack Trustham, Adrian Swindells and Alan Sansum will be on hand to provide tough opposition.

The Vintage race which closes this meeting organised by the South Eastern Centre of the Auto Cycle Union, will probably give Chris Williams and his incredible Scott, yet another win. This machine will be lapping at around 70 mph and yet it came off the production line in 1928!

Programme

Awards

Event One

1st £25, 2nd £15, 3rd £10,

4th £8, 5th £5, 6th £3,

7th £2, 8th £1.

Event Two

1st £25, 2nd £15, 3rd £10,

4th £8, 5th £5, 6th £3,

7th £2, 8th £1.

Event Three

1st £40, 2nd £30, 3rd £20,

4th £10, 5th £7, 6th £6,

7th £5, 8th £2.

Event Four

1st £12, 2nd £10, 3rd £8,

4th £6, 5th £4, 6th £2,

7th £1.

Event Five

1st £30, 2nd £20, 3rd £15,

4th £10, 5th £7, 6th £6,

7th £5, 8th £2.

Event Six

1st £40, 2nd £30, 3rd £25,

4th £15, 5th £10, 6th £5.

£15 to the driver of the

first machine not exceeding

500 cc to finish in the

Final. £10 to the second

machine not exceeding

500 cc to finish in the Final.

Event Six Heats:

1st £8, 2nd £5, 3rd £3.

Event Seven

1st £10, 2nd £5, 3rd £3,

4th £2, 5th £1.

2.00 pm Race 1 Event Six First Five-lap Heat for Racing Sidecars up to 1,300 cc

2.15 pm Race 2 Event One Eight-lap Race for Solo Racing Motor Cycles over 125 cc and not over 250 cc

2.30 pm Race 3 Event Six Second Five-lap Heat for Racing Sidecars up to 1,300 cc

2.45 pm Race 4 Event Two Ten-lap Race for Solo Racing Motor Cycles over 250 cc and not over 350 cc

3.05 pm Race 5 Event Six Third Five-lap Heat for Racing Sidecars up to 1,300 cc

3.20 pm Race 6 Event Five Ten-lap Race for Solo Racing Motor Cycles over 340 cc and not over 1,000 cc

3.45 pm Race 7 Event Six Fourth Five-lap Heat for Racing Sidecars up to 1,300 cc

4.00 pm Race 8 Event Four Eight-lap Race for Solo Racing Motor Cycles over 175 cc and not over 1,000 cc

4.10 pm Interval

4.40 pm Race 9 Event Three Ten-lap Race for Solo Racing Motor Cycles over 175 cc and not over 1,000 cc

5.00 pm Race 10 Event Six Ten-lap Final for Racing Sidecars up to 1,300 cc

5.20 pm Race 11 Event Seven Eight-lap Race for Racing Vintage and Post Vintage Motor Cycles from 251 cc to 750 cc

Palace Portrait

Charlie Sanby

In the distinctive leathers of the Kuhn-Shell team, the tall figure of Charlie Sanby is easily recognisable. Now in his tenth season, Charlie has reached the top after a long struggle to gain recognition of his great talents.

He was working as a motorcycle mechanic in Hatfield when he first caught the racing fever. His employer at that time, Roy Claridge, sponsored a couple of riders and after seeing

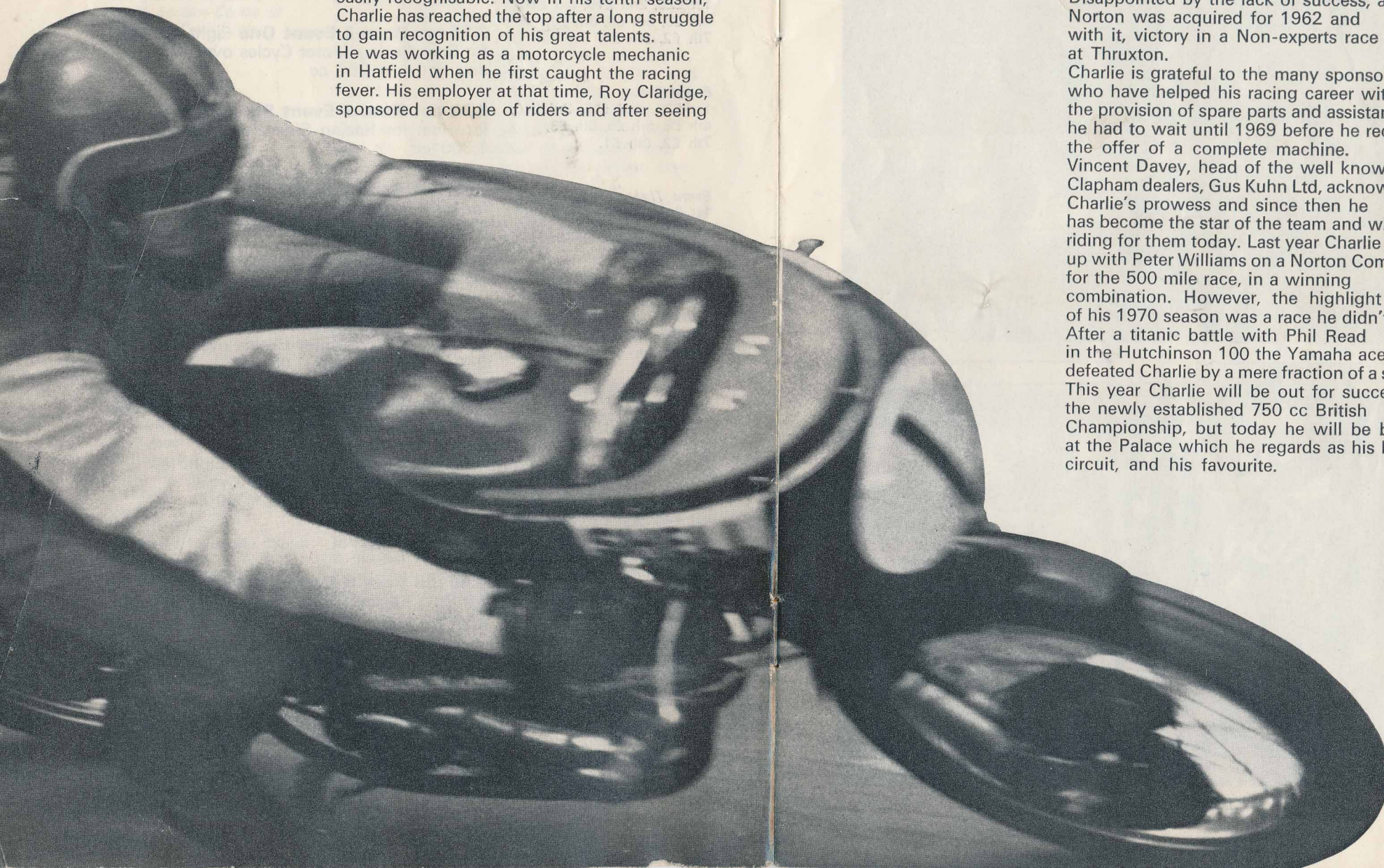
their machines, Charlie fettled his own 350 cc Gold Star Roadster for racing. In his first race at Silverstone he came tenth, and in the search for more power the 350 was soon replaced by a 500 cc Gold Star.

This monster proved to be a reluctant starter and Charlie was often seen to be pushing frantically long after his rivals had disappeared round the first bend!

Disappointed by the lack of success, a Manx Norton was acquired for 1962 and with it, victory in a Non-experts race at Thruxton.

Charlie is grateful to the many sponsors who have helped his racing career with the provision of spare parts and assistance, but he had to wait until 1969 before he received the offer of a complete machine.

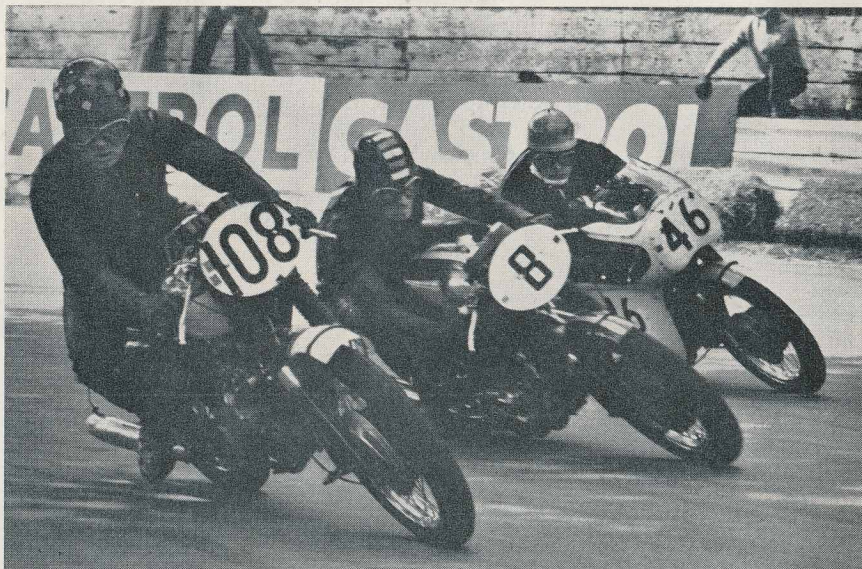
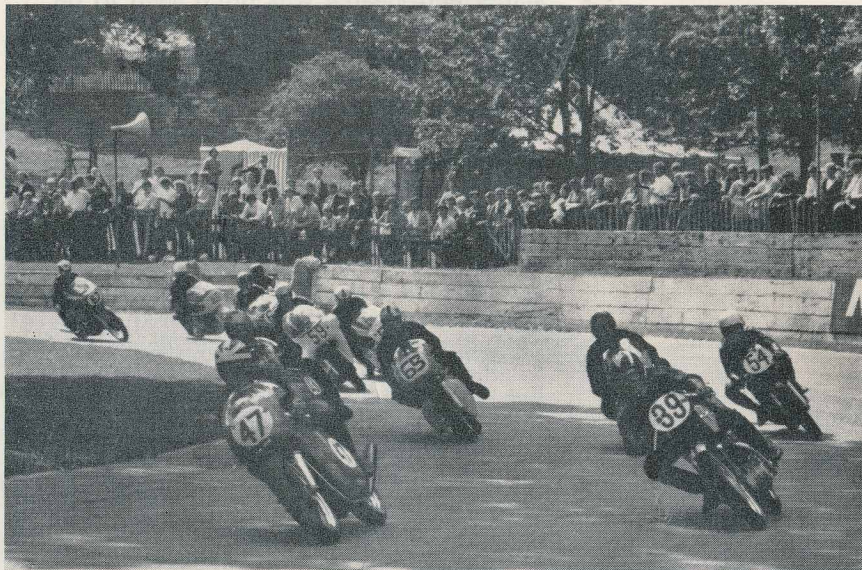
Vincent Davey, head of the well known Clapham dealers, Gus Kuhn Ltd, acknowledged Charlie's prowess and since then he has become the star of the team and will be riding for them today. Last year Charlie teamed up with Peter Williams on a Norton Commando for the 500 mile race, in a winning combination. However, the highlight of his 1970 season was a race he didn't win! After a titanic battle with Phil Read in the Hutchinson 100 the Yamaha ace defeated Charlie by a mere fraction of a second. This year Charlie will be out for success in the newly established 750 cc British Championship, but today he will be busy at the Palace which he regards as his local circuit, and his favourite.



Palace '70

Top. Round North Tower to sweep through the Glade.

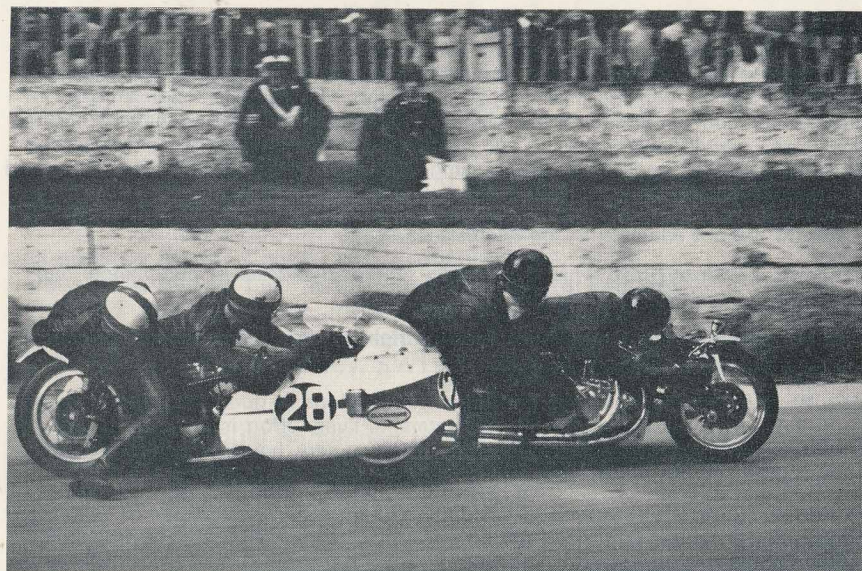
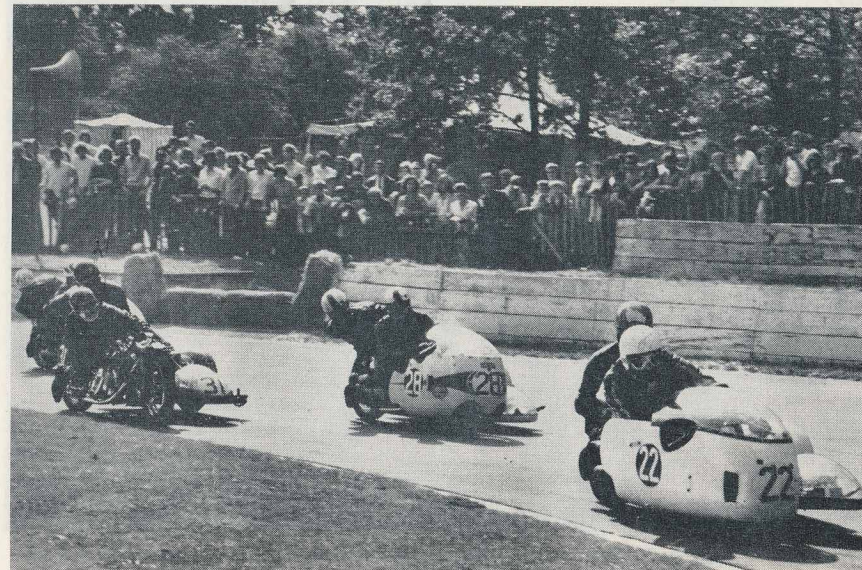
Below. Butler (750 Triumph) gets sandwiched on the bend in production race: finally finished 6th.



Photos: GLC Architects Dept., Photographic Unit

Top. Three-wheeler event: No. 31 eventually finished third.

Below. Three-wheeler close shave. No. 28, A. Wright, finished 5th.



Paul Smart (6) 348 Yamaha crosses line to beat Terry Grotiefied (28) 346 Yamaha, 6th, by a lap.



NOTICES

Warning to the Public. Motor Racing is Dangerous. It is a condition of admission that all persons having any connection with the promotion and/or organisation and/or conduct of the meeting, including the owners of the land and the drivers and owners of the vehicles and passengers in the vehicles, are absolved from all liability arising out of accidents causing damage or personal injury (whether fatal or otherwise) howsoever caused to spectators or ticket holders.

Animals are not admitted in the interests of safety.

Programme Copyright. This programme, including the list of competitors and their racing numbers, is copyright.

The Greater London Council reserves the right to postpone, abandon, or cancel the race meeting or any part thereof.

The Promoters accept entries and driver nominations in good faith, but have no control over circumstances affecting non-starters. Every effort is made to adhere to the printed programme of competitors. The promoters, however, cannot accept responsibility for the failure of any rider or motor cycle to appear.

Paddock Tickets price 60p each, in addition to admission charge, can be obtained at the pay-box of the pedestrian bridge adjacent to Crystal Palace station. Only a limited number are available.

Flag Signals

The following signals will be given in today's races

National Flag—Start

Black (with number)—that rider to stop

Green—Course clear

Red—stop (all drivers)

Yellow—danger, drive slowly

Chequered Black and White—Finish

Racing Numbers

The number plate on the front of every machine will be white with black numbers. Side numbers will be as follows:

Solos 125 cc to 250 cc Green Plates with White numbers

Solos 251 cc to 350 cc Blue Plates with White Numbers

Solos 351 cc to 500 cc Yellow Plates with Black Numbers

Solos 501 cc to 1,000 cc White Plates with Black Numbers

Sidecars Black Plates with White Numbers

Advertising

Enquiries for advertising space should be made to GLC Supplies Department (Programme Advertisements), Room 95, County Hall, SE1 01-633 5000 Extensions 6465 or 6367

Acknowledgements

All fire precautions and fire fighting services by Antifyre

Breakdown services by

Gilbert's Motors Ltd., 304-312 Sangley Road, SE6

Streamline Motor-Cycles, 525 Lordship Lane, SE22

Dees of Croydon Ltd., Brighton Road, South Croydon

First Aid Services by St John Ambulance Brigade

Duplicating and office equipment loaned and operated by Roneo Ltd., Littlers Close, Merton Abbey, SW19

Lost Property

Lost property should be handed to any uniformed keeper or any member of the staff wearing a lapel badge or an armband, or handed into the Crystal Palace Offices, Anerley Hill, SE19.

Enquiries about lost property should be made to the Park Superintendent's Office near the Penge entrance (Telephone 01-778 7148).

Records and Lap Speed Table

Road Racing Circuit—Motor Cycles

Lap Records up to and including meeting on 31 August, 1970

Class	Driver	Machine	Time (secs)	Speed (mph)	Date
250 cc solo	P. A. Smart	246 Yamaha	62.0	80.71	31.8.70
350 cc solo	P. A. Smart	348 Yamaha	62.6	79.94	31.8.70
500 cc solo	P. Mahoney	496 Kuhn Seeley	61.4	81.50	31.8.70
1000 cc solo	P. A. Smart M. Ashwood	496 Seeley 740 Weslake-Metisse	61.4	81.50	31.8.70
Three-wheelers	C. Vincent	BSA Watsonian	65.4	76.51	7.4.69
Vintage	C. J. Williams	1926 Scott	69.0	72.52	30.8.65

Race Records up to and including meeting on 31 August, 1970

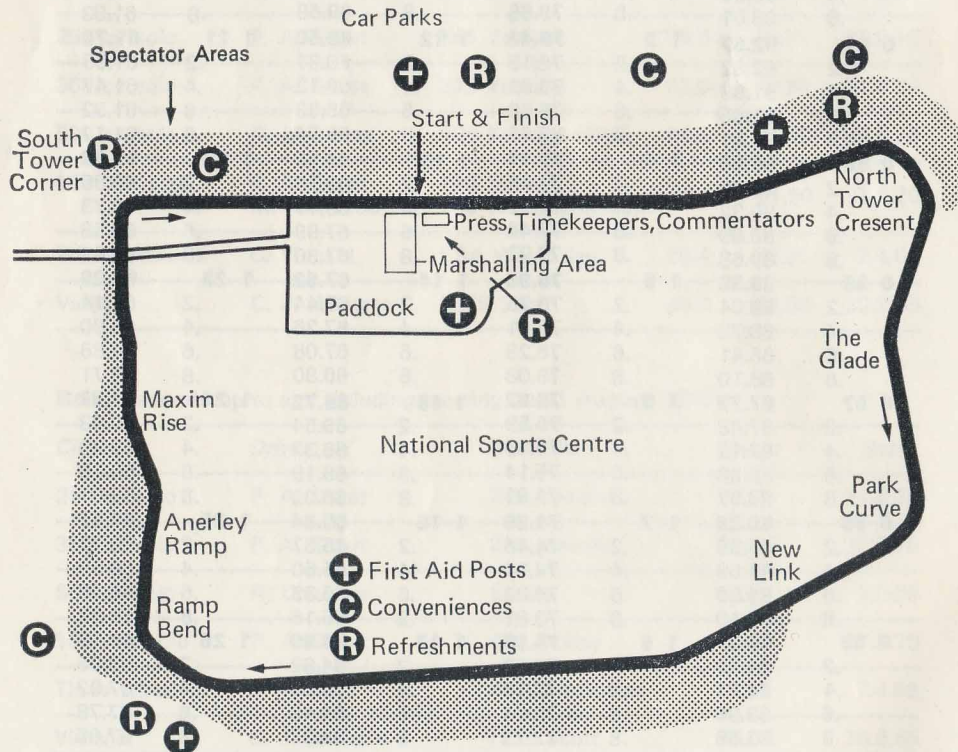
Class	Driver	Machine	Speed	Date
250 cc solo	P. A. Smart	246 Yamaha	76.39	31.8.70
350 cc solo	P. A. Smart	348 Yamaha	77.29	31.8.70
500 cc solo	R. Chandler	Seeley	78.17	1.9.69
1000 cc solo	P. A. Smart	496 Seeley	79.84	31.8.70
Three-wheelers	C. Vincent	BSA Watsonian	73.41	7.4.69
Vintage	C. J. Williams	1926 Scott	70.64	30.8.65

1 lap—1.39 miles

Lap Time m s	Speed mph	Lap Time m s	Speed mph	Lap Time m s	Speed mph	Lap Time m s	Speed mph
0 51	98.12	1 0	83.40	1 9	72.52	1 18	64.15
.2	97.73	.2	83.12	.2	72.31	.2	63.99
.4	97.35	.4	82.85	.4	72.10	.4	63.83
.6	96.98	.6	82.57	.6	71.90	.6	63.66
.8	96.60	.8	82.20	.8	71.69	.8	63.50
0 52	96.23	1 1	82.03	1 10	71.49	1 19	63.34
.2	95.86	.2	81.76	.2	71.28	.2	63.18
.4	95.50	.4	81.50	.4	71.08	.4	63.02
.6	95.13	.6	81.23	.6	70.88	.6	62.86
.8	94.77	.8	80.97	.8	70.68	.8	62.71
0 53	94.42	1 2	80.71	1 11	70.48	1 20	62.55
.2	94.06	.2	80.45	.2	70.28	.2	62.39
.4	93.71	.4	80.19	.4	70.08	.4	62.24
.6	93.36	.6	79.94	.6	69.89	.6	62.08
.8	93.01	.8	79.68	.8	69.69	.8	61.93
0 54	92.67	1 3	79.43	1 12	69.50	1 21	61.78
.2	92.32	.2	79.18	.2	69.31	.2	61.63
.4	91.99	.4	78.93	.4	69.12	.4	61.47
.6	91.65	.6	78.68	.6	68.93	.6	61.32
.8	91.31	.8	78.43	.8	68.74	.8	61.17
0 55	90.98	1 4	78.19	1 13	68.55	1 22	61.02
.2	90.65	.2	77.94	.2	68.36	.2	60.88
.4	90.32	.4	77.70	.4	68.17	.4	60.73
.6	90.00	.6	77.46	.6	67.99	.6	60.58
.8	89.68	.8	77.22	.8	67.80	.8	60.43
0 56	89.36	1 5	76.98	1 14	67.62	1 23	60.29
.2	89.04	.2	76.75	.2	67.44	.2	60.14
.4	88.72	.4	76.51	.4	67.26	.4	60.00
.6	88.41	.6	76.28	.6	67.08	.6	59.86
.8	88.10	.8	76.08	.8	66.90	.8	59.71
0 57	87.79	1 6	75.82	1 15	66.72	1 24	59.57
.2	87.48	.2	75.59	.2	66.54	.2	59.43
.4	87.18	.4	75.36	.4	66.37	.4	59.29
.6	86.88	.6	75.14	.6	66.19	.6	59.15
.8	86.57	.8	74.91	.8	66.02	.8	59.01
0 58	86.28	1 7	74.69	1 16	65.84	1 25	58.87
.2	85.98	.2	74.46	.2	65.67	.2	58.73
.4	85.68	.4	74.24	.4	65.50	.4	58.59
.6	85.39	.6	74.02	.6	65.33	.6	58.46
.8	85.10	.8	73.81	.8	65.16	.8	58.32
0 59	84.81	1 8	73.59	1 17	64.99	1 26	58.19
.2	84.53	.2	73.37	.2	64.82	.2	58.05
.4	84.24	.4	73.16	.4	64.65	.4	57.92
.6	83.96	.6	72.94	.6	64.48	.6	57.78
.8	83.68	.8	72.73	.8	64.32	.8	57.65

Map of Circuit

At the points marked (R) there is a Licensed Bar and Snacks, Tea and Cold Drinks are available. Hot Dogs, Hamburgers, Cold Drinks, Ice Cream, Sweets and Cigarettes are available from additional points around the Circuit.



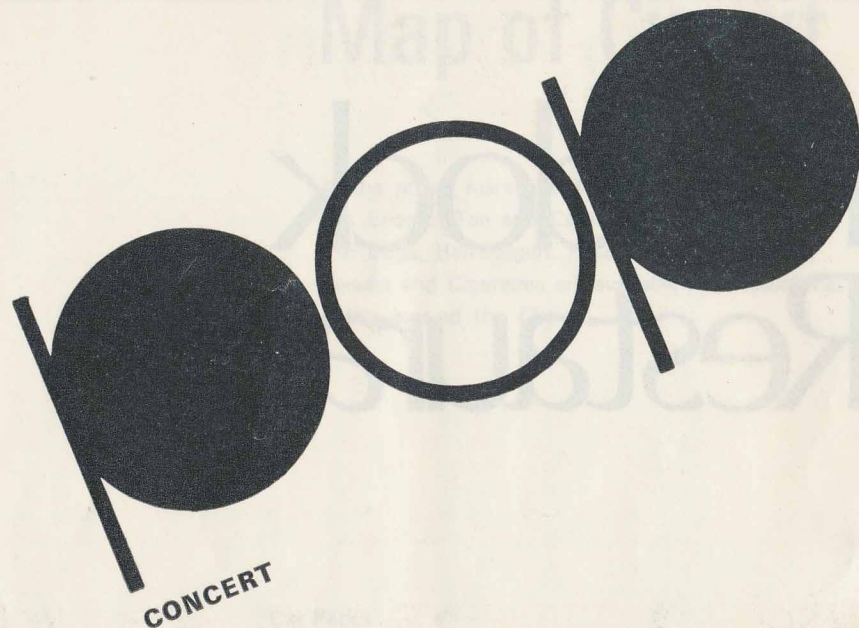
Paddock Restaurant

Stadia Catering Services

are happy to announce that a permanent feature of the Circuit is the **Paddock Restaurant**

This is open to the General Public and will serve Breakfast from 8 am. The Lunch Menu will feature a choice of either a Salad Bowl or Hot Meals available until the end of the meeting.

Snacks and a Licensed Bar are available in the Paddock Area and at other points around the circuit.



Crystal Palace Concert Bowl
Saturday 15 May. 2—6 pm

Four hours of the latest pop from some of the top groups for the first time ever in this famous setting

The names of the groups taking part will be announced for the first time over the public address this afternoon

Watch for further details in your local and musical press

Crystal Palace

At most race meetings **Pass out tickets** can be obtained at the Ramp Bend or Penge entrances for those wishing to take advantage of the following facilities in Crystal Palace Park.

Children's Zoo. There are many interesting birds and animals on display, some of which can be safely handled by children of all ages. The Zoo is open daily until the end of September, as follows: Monday to Friday (School term time) 1.30 pm—5.30 pm. School holidays, weekends and Bank Holidays 11 am to 6 pm. **Pony and Trap** and pony rides for children are available in a nearby enclosure.

A generous size **Sand Pit** for children to play in is also sited near to the Zoo and pony ride enclosure, with adjacent children's toilets.





The Play Park intended for children from 5 years up to school leaving age, is situated in the corner of the cricket field. Here children can freely take part in a variety of activities including climbing, playing on rope railways and balancing apparatus. A hut, especially useful in wet weather, provides facilities for painting, modelling, handicrafts and table tennis. Trained playleaders are in charge. The play park is open until the beginning of September.

The One O'clock club provides special facilities for the under fives. Mothers are quite free to play with their children or to rest but must remain in the area of the club while their children are there. Admission is free and any child under five may join in water and sand play, modelling, painting and drawing. A hut is available. The club is staffed by trained women play leaders and is open from 1pm until 4.30 pm each weekday throughout the year.

Boating Rowing boats are available for hire at a charge of 25p per hour.

Fishing Pike, perch, roach and bream as well as some other coarse fish can be caught in the boating lake. Daily tickets cost 9p (5p for children under 16).

Catering A restaurant, situated between the lake and the Penge entrance, offers tea, coffee, minerals, light snacks and ice cream at reasonable prices.

And finally the **Crystal Palace Monsters**. These life-size models of prehistoric animals are sited on the island in the boating and fishing lake. They are well worth a visit before you leave.

The park is, of course, open every day for your enjoyment. Details of symphony concerts, light music and children's shows are given in

Open Air Entertainment 1971 obtainable price 10p (postage and packing 4p extra) from *The Chief Officer of the Parks Department, Cavell House, 2a Charing Cross Road, WC2H 0HJ.*, any GLC park or through W. H. Smith & Son bookstalls.



Crystal Palace Concert Bowl

This year will see the eleventh season of Sunday evening symphony concerts in the natural amphitheatre by the lake, near North Tower Crescent. The first, on 27 June at 7.30 pm will be given by the City of Birmingham Symphony Orchestra, conducted by Maurice Handford and will feature the ever popular "1812 Overture" (with cannon effects). On 4 July at 8 pm, the Royal Liverpool Philharmonic Orchestra will be conducted by Charles Groves, when the main work will be the "Music for the Royal Fireworks" complete with a firework display! The final piece in this concert will be Sousa's rousing march "Stars and Stripes Forever". The following week, on 11 July at 7.30 pm, Maurice Handford will again conduct the City of Birmingham Symphony Orchestra in a programme with the emphasis on "Viennese" music, whilst for the final concert at 7.30 pm, on 18 July, Charles Groves will return with the Royal Liverpool Philharmonic Orchestra. The main item will be Tchaikovsky's Symphony No. 4 in F minor and the rest of the programme will include "Overture, The Thieving Magpie" and "Fantasia, Greensleeves".

Deck chairs, numbered and reserved, are bookable in advance, price 30p. 2,000 unreserved deck chairs, also price 30p, are obtainable at the concert from 6.45 pm. Sitting on the grass costs 20p.

To book or obtain full programme details, please write to the *Information Office, GLC Parks Department, Cavell House, 2a Charing Cross Road, London, WC2H 0HJ.* or telephone 01-836 9882.

Motor Racing Circuit Calendar 1971

2 May, Alvis Rally

Admission free. Organised by Alvis OC

8 May, Sprint Meeting

Promoted and organised by Singer OC

Rover tickets 30p Children 10p Paddock transfer 20p.

29 May, Spring International Practice Day

Admission 30p or free to holders or purchasers of tickets for Monday 31 May. Accompanied children free.

31 May, Hilton Transport International Trophy Meeting

Organised for GLC by British Automobile Racing Club

Adults £1 Children 10p Paddock transfer £1.20 Seating 40p and 30p.

6 June, RAC 'L' Driver of the Year—Finals

Admission free. Organised by RAC

18 June, Trumps Moto-Pop

Promoted by Trumps Employment Agency Ltd., and organised by British Automobile Racing Club

Rover tickets 50p Children 10p Paddock transfer 60p.

7 August, 'Daily Express' Trophy Meeting with Petonyer F3 Trophy

Organised for GLC by British Racing and Sports Car Club

Rover tickets 50p Children 10p Paddock transfer 60p.

15 August, Veteran Car Club Rally

Admission free. Organised by Veteran Car Club (London Section)

4 September, Metropolitan Motor Cycle Race Meeting

Organised for GLC by British Motor Cycle Racing Club

Adults 40p Children 10p Paddock transfer 60p Seating 25p and 20p.

11 September, National Motor Race Meeting

Promoted and organised by British Automobile Racing Club

Rover tickets 50p Children 10p Paddock transfer 60p.

25 September, Historic Car Races

Promoted and organised by Aston Martin Owners' Club

Rover tickets 50p Children 10p Paddock transfer 60p.

9 October, National Karting Championships

Promoted and organised by British Kart Club

Rover tickets 40p Children 10p Paddock transfer 60p.

FREE PARKING at all race meetings

Notes

(i) All details are correct at the time of publication.

(ii) All rallies are held on the top straight of the motor racing circuit.

(iii) Cycle racing takes place on Tuesday evenings from 27 April until 24 August (except 1 June), on Thursday evenings 3 and 24 June and 22 July and all day on Sunday 25 April, 23 May, 1 August and 5 September.

Mailing list

If you would like to receive details of events in future seasons, your name can be added to our mailing list if you 'phone 01-778 4691 or write to the Circuit Manager (EP/71), Crystal Palace Motor Racing Circuit Offices, Anerley Hill, London, SE19.

Crystal Palace Monday 31 May

Hilton Transport International Trophy Meeting

Organised for GLC by the British Automobile Racing Club.

Rounds of:

European F.2 Drivers' Championship and
RAC British Saloon Car Championship.

Admission: £1. Children: 10p.

Start line and South Tower Enclosures: 40p.

Other seating enclosures: 30p.

Transfer to Paddock: £1.40.

Party rates: 15% discount on advance bookings of 20 or more admission tickets.

Advance booking facilities available from the Chief Officer of the Parks Department, Cavell House, 2a Charing Cross Road, London, WC2 (01-836 9882).

Practice, Saturday 29 May: 30p or *FREE* to holders of raceday tickets. Accompanied children free.

Free Parking

Refreshments

Car parks open 9.00 am Turnstiles 9.30 am

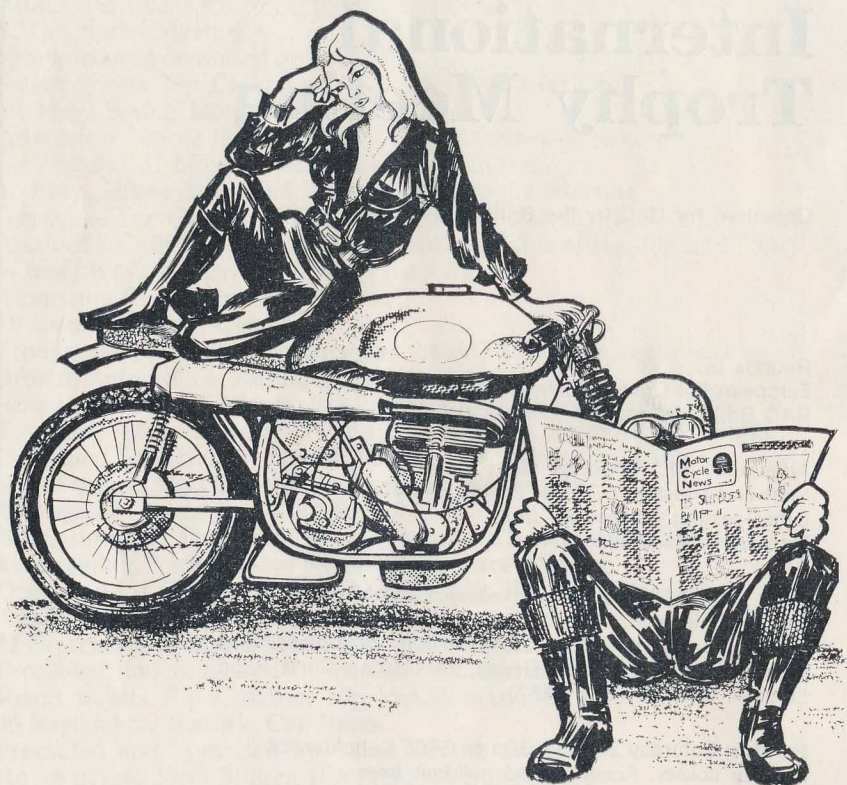
Practice in morning starts 9.30 am First Race 12.30 pm

Pass out tickets available for children's zoo, monsters and other park facilities.

For further information please phone 01-778 4691 or write to:

Circuit Manager, Crystal Palace Offices, Anerley Hill, London, SE19

wednesday— motorcyclenewsday



Race 1

Event Six—Heat One—Five Laps

Sidecars up to 1,300 cc

The first three drivers from this heat will go forward into the Final (page 27)

No.	Driver/Passenger	Machine	c.c.	Town
1	E. Wallbank/P. Guenigault	Norton	750	Croydon
2	A. Swindells/D. Bayer	Curley Atlas	750	London
3	G. Boret/N. Boret Entrant: R. G. M. Luton	R.G.M.	998	East Molesey
4	E. L. Vant/D. V. Doyle	Rickman Triumph	683	Edgware
5	P. Tyack/P. Meehan Entrant: Reg Allen	Triumph	650	London
6	P. Sheridan/P. Smith	B.S.A.	750	Great Wyrley
7	R. Aldous/P. Lucock	Triumph	750	Croydon
8	H. C. Munson/R. H. Ashenden	Triumph	650	London
9	M. J. Broom/G. W. Hibbitt	Triumph	650	Queniborough
10	J. Levy/M. Wooller	Unorfordox	1297	Chelmsford
11	C. E. Daynes/E. F. Roberts	Vincent	1000	Eastbourne
12	D. Wood/D. Coomber	Curley Atlas	750	Aylesbury

Reserve:

49	M. E. Boddice/ Entrant: Bill Boddice Garages Ltd.	B.S.A.	741	Birmingham
----	--	--------	-----	------------

Fastest Lap No. Time Speed mph

Finish Order	1st	2nd	3rd	4th	5th	6th
Time Speed						

Race 2

Event One—Eight Laps

Solos: Over 125 cc and not over 250 cc

No.	Driver	Machine	c.c.	Town
2	D. Browning Entrant: Jack Browning Ltd.	Yamaha	250	Cheltenham
3	R. Butcher Entrant: Mrs. N. Ivy	Ivy-Yamaha	250	Tonbridge
4	P. Mahoney	Yamaha	250	Crayford
5	V. Chivers Entrant: Richards Racing	Yamaha	250	Barry
6	C. Belcher	Yamaha	246	London
7	A. Dunscombe Entrant: Vic Camp Motor Cycles	Ducati	248	Romford
8	K. Martin Entrant: Eddie Crooks	Crooks-Suzuki	247	Erith
9	J. Riley	Smith-Suzuki	248	Bexleyheath
10	B. McAllister	Suzuki	247	Erith
11	G. Corbett Entrant: Five Star Speed	Grayam	250	Harrow
12	R. Keys	Yamaha	250	Worthing
13	G. H. Matthews	Suzuki	247	Horsham
14	A. Snape Entrant: Gordon Motor Services	Yamaha	246	Warley
15	G. Thomas	Aermacchi	250	Rugby
16	J. J. Roberts	Yamaha	249	Witham
17	T. Nash	Ducati	250	Romford
18	C. McGahan Entrant: Two Cycle Competition	Suzuki	250	Sidcup
19	D. Lunn Entrant: Eddie Crooks	Crooks-Suzuki	247	Harrow
20	M. Inchley	Villiers	247	Halesowen
21	S. J. Goodrum	Suzuki	250	London
22	J. Crawshaw	Ducati	250	Atherton
23	I. R. Carvell	Bultaco	249	London
24	P. Burton	Yamaha	246	Tenterden
25	A. Blueman	Yamaha-Bultaco	246	London
29	J. Weeden	Yamaha	246	London
Reserves:				
35	C. Williams	Yamaha	246	Kelsall
26	P. Franklin	Greeves	250	London
27	A. Stanley	Greeves	248	London
28	P. Tucker	Bultaco	244	London

Fastest Lap No. Time Speed mph

Finish Order	1st	2nd	3rd	4th	5th	6th
Time Speed						

Race 3

Event Six—Heat Two—Five Laps

Sidecars up to 1,300 cc

The first three drivers from this heat will go forward into the Final (page 27)

No.	Driver/Passenger	Machine	c.c.	Town
13	A. J. Sansum/D. Jose Entrant: R. T. Quaife Eng.	Quaife Triumph	741	Romford
14	D. H. Young/R. Mills	Norton	750	London
15	R. J. Hawes/J. P. Mann	Rhombus Imp	900	Woodford
16	M. Fathers/J. Gay	Norton	745	Southall
17	A. R. Moss/R. English	Triumph	650	Sidcup
18	K. Vogl/N. Sheldon Entrant: Bert Mills Ltd.	B.S.A.	650	Burbage
19	W. T. Mumford/J. J. Mumford	Triumph	650	Barking
20	D. Kruse/D. Rawlinson	Triumph	650	Mirnera
21	J. R. Simper/	Weslake	700	Enfield
22	F. J. Kately/V. Sampson	Norton	750	London
23	R. J. Cox/S. J. Woodley	Triumph	650	London
24	R. C. Weller/P. Bosley	Seeley	650	Epsom

Fastest Lap No. Time Speed mph

Finish Order	1st	2nd	3rd	4th	5th	6th
Time Speed						

Race 4

Event Two—Ten Laps

Solos: Over 250 cc and not over 350 cc

No.	Driver	Machine	c.c.	Town
2	D. Browning Entrant: Jack Browning Ltd.	Yamsel	350	Cheltenham
3	R. Butcher Entrant: Mrs. N. Ivy	Ivy-Yamaha	350	Tonbridge
4	P. Mahoney	Yamaha	350	Crayford
5	V. Chivers Entrant: Richards Racing	Bridgestone	350	Barry
6	B. Ditchburn Entrant: Broad Motor Cycles Ltd.	Broad-Yamaha	346	Gravesend
7	A. Dunscombe Entrant: Vic Camp Motor Cycles Ltd.	Ducati	340	Romford
8	M. Carney Entrant: Reg Thomas	Yamsel	347	Wallington
9	J. Gardiner	Kawasaki	347	Stroud
10	M. Balmer	A.J.S.	349	Slough
11	C. Brown	Mularney-Norton	348	Luton
13	R. Bowler	Bultaco	350	Crawley
15	B. Edwards	Ducati	350	London
16	T. B. Sparrow	Norton	349	Beckenham
17	T. Nash	Ducati	350	Romford
18	D. Street Entrant: Monty & Ward Ltd.	Bultaco	345	Romford
19	S. Morrell	Aermacchi	344	Ware
20	T. C. Parker	Aermacchi	344	High Wycombe
21	R. Piles	Rexy-Am	346	Herne Bay
22	M. N. Read Entrant: N. W. Read	Aermacchi	344	Luton
23	R. Shewen	A.J.S.-Metisse	348	Ruislip
24	R. Simmons	Aermacchi	344	Orpington
25	A. Blueman	J.T.-Yamaha	346	London
28	K. Inwood	Norton	348	Hersham
31	A. Darville	A.J.S.	348	Twickenham
74	R. Chandler Entrant: Reg Kirby	Yamaha	350	Sevenoaks
Reserves:				
12	R. Keys	Yamaha	350	Worthing
33	T. Blain Entrant: T.B.A. Racing	Drixton-Aermacchi	348	Worcester Park
29	C. W. Hunt	Aermacchi	344	Beeston
30	D. M. Stevens Entrant: Jeff's Motor Spares	Norton	349	London
32	M. H. Jebson	Kettle-Norton	349	London

Enter result on page 21

Race 5

Event Six—Heat Three—Five Laps

Sidecars up to 1,300 cc

The first three drivers from this heat will go forward into the Final (page 27)

No.	Driver/Passenger	Machine	c.c.	Town
25	J. G. Trustham/	N.S.U.	1000	Hornchurch
26	M. J. Potter/P. Burleigh	B.S.A.	750	Belstead
27	P. Hardcastle/A. Macfadzean	P.J.H.-B.S.A.	654	London
28	J. L. Barker/C. Emmins	Reynoldson-B.S.A.	654	Hornchurch
29	B. Gray/D. House	Triumph	740	High Wycombe
30	A. Wright/G. Poole	Triumph	649	Romford
31	K. Hellier/Patricia Hellier	Triumph	650	London
32	T. K. Hall/	B.K.S.	654	Sutton Coldfield
33	A. P. Withey/D. Spark	J.A.D. Special	650	Luton
34	A. Potts/V. Hollamby	Triumph	704	Hailsham
35	R. Bryan/P. Pritchard	Ray-Weslake	680	Gresford
36	D. J. Barnard/ Entrant: Brighton & D.M.C.C.	Triumph	650	Portslade

Fastest Lap No..... Time..... Speed.....mph

Finish Order	1st	2nd	3rd	4th	5th	6th
Time Speed						

Result. Race 4

Fastest Lap No..... Time..... Speed.....mph

Finish Order	1st	2nd	3rd	4th	5th	6th
Time Speed						

Solos: Over 340 cc and not over 1,000 cc

No.	Driver	Machine	c.c.	Town
1	P. Williams Entrant: Norton Villiers Performance Shop	<i>Norton</i>	750	Andover
2	D. Browning Entrant: Jack Browning Ltd.	<i>Yamsel</i>	350	Cheltenham
3	R. Butcher Entrant: Mrs. N. Ivy	<i>Ivy-Yamaha</i>	350	Tonbridge
4	P. Mahoney Entrant: Kuhn-Shell Team	<i>Kuhn-Norton</i>	750	Crayford
5	V. Chivers Entrant: Richards Racing	<i>Norton</i>	500	Barry
6	B. Ditchburn Entrant: Broad Motorcycles Ltd.	<i>Broad-Yamaha</i>	351	Gravesend
7	C. Williams	<i>Scott</i>	650	Chepstow
8	M. Carney Entrant: Reg Thomas	<i>Kawasaki</i>	498	Wallington
9	J. Harvey Entrant: T. W. Kirby	<i>Kirby-Metisse</i>	496	Colchester
10	M. Ashwood Entrant: Monty & Ward Ltd.	<i>Weslake-Metisse</i>	750	Edenbridge
11	C. Brown	<i>Greenwood-Triumph</i>	680	Luton
13	R. Bowler	<i>Monty-Bultaco</i>	350	Crawley
14	G. L. Bailey Entrant: R.B. Racing Equipe	<i>Weslake-Metisse</i>	700	Croydon
16	P. Butler Entrant: Boyer of Bromley Ltd.	<i>Triumph</i>	750	London
17	P. Gibson Entrant: Keith Burns	<i>Seeley</i>	496	Romford
18	J. Boniface Entrant: Jeff's Motor Spares	<i>Kettle-Norton</i>	499	Streatham
19	D. J. Habel	<i>Petty-Norton</i>	499	Crowthorne
20	C. Neve	<i>Seeley</i>	496	Portslade
21	D. Nixon Entrant: Boyer of Bromley Ltd.	<i>Triumph</i>	750	Ashford
22	A. E. Rogers	<i>Seeley</i>	496	Enfield
23	C. Sanby Entrant: Kuhn-Shell Team	<i>Kuhn-Norton</i>	745	Hatfield
24	G. W. Sharp	<i>Kuhn-Seeley</i>	750	Edgware
31	T. H. Newell	<i>Norton</i>	500	Potters Bar
53	J. Rodgers	<i>Seeley</i>	500	London
74	R. Chandler Entrant: Redex T-Macc	<i>Kawasaki</i>	500	Sevenoaks

Continued page 23

Reserves:

12	R. Keys	<i>Yamaha</i>	350	Worthing
26	B. Rodwell	<i>Dresda</i>	649	London
	Entrant: Dresda Autos Ltd.			
30	B. Lee	<i>Honda</i>	500	Southampton
32	R. Judge	<i>Triumph</i>	649	Northampton
	Entrant: Tony Clarke Motorcycles, Northampton			
52	R. Newton	<i>Atlas-Triumph</i>	650	London
65	B. Timson	<i>Triumph</i>	700	Copthorne

Result. Race 6

Fastest Lap No..... Time..... Speed.....mph

Finish Order	1st	2nd	3rd	4th	5th	6th
Time Speed						

Race 7

Event Six—Heat Four—Five Laps

Sidecars up to 1,300 cc

The first three drivers from this heat will go forward into the Final (page 27)

No.	Driver/Passenger	Machine	c.c.	Town
37	P. Brown/ Entrant: Peter Chapman	B.S.A.	650	Guilborough
38	T. Baitup/P. Diprose	Triumph-Weslake	688	Tonbridge
39	P. Williams/M. Casey	P.W. Special	850	Great Wyrley
40	R. Cass/D. Jose	Triumph	650	Chigwell
41	W. Perryman/M. Gray	Triumph	650	Wallington
42	S. Stephens/A. Inch Entrant: Jim Sharpe Motor Cycles	Triumph	750	Tonbridge
43	B. Uren/E. Jose	Triumph	650	Redruth
44	J. Campbell/Margaret Little	Norton	750	Sidcup
45	A. G. Betts/J. G. Betts	Triumph	650	London
46	T. Weedy/T. Mould	T.W.S.	875	Eastleigh
47	T. Harris/B. L. Harris Entrant: R. N. J. Racing	Weslake	683	Barnehurst
48	G. O'Dell/P. Stockdale	Triumph	1000	Hemel Hempstead

Fastest Lap No. Time Speed mph

Finish Order	1st	2nd	3rd	4th	5th	6th
Time Speed						

Reserves for Events Three and Four

12	R. Keys	Yamaha	350	Worthing
18	D. F. White	Triumph-Norton	740	Mitcham
35	C. Williams	Yamaha	246	Kelsall
28	K. Inwood	Norton	597	Hersham
65	B. Timson	Triumph	700	Copthorne
32	J. Thompson Entrant: Tony Clarke Motor Cycles, Northampton	Triumph	649	Northampton
31	T. H. Newell	Norton	500	Potters Bar
23	R. Shewen	A.J.S.-Metisse	348	Ruislip
29	C. W. Hunt	B.S.A.	498	Beeston
34	B. Smith	Norton	500	Reigate

Race 8

Event Four—Eight Laps

Solos: Over 175 cc and not over 1,000 cc

No.	Driver	Machine	c.c.	Town
5	V. Chivers Entrants: Richards Racing	Norton	500	Barry
8	K. Martin Entrant: Eddie Crooks	Crooks-Suzuki	247	Erith
9	M. J. Broom	Weslake-Metisse	687	Queniborough
10	B. McAllister	Suzuki	247	Erith
11	G. Corbett Entrant: Five Star Speed Equipe	Grayam	250	Harrow
13	J. R. Pepper	Norton	750	London
16	T. B. Sparrow	Norton	349	Beckenham
18	J. C. Boniface Entrant: Jeff's Motor Spares	Kettle-Norton	499	London
19	S. Morrell	Aermacchi	344	Ware
24	R. Simmons	Stanley-Commando	745	Orpington
25	A. Blueman	J.T. Yamaha	346	London
33	T. Blain Entrant: TBA Racing	D.W. Daytona	498	Worcester Park
41	R. Allen Entrant: Portsmouth Brewery	Bob Gollner Special	650	Portsmouth
42	N. Barry	Norton	500	London
43	J. Chapman Entrant: Redex T-Macc.	B.S.A.-Metisse	750	Pinner
44	D. Deane Entrant: Park Road Motor Cycles, Southampton	Commando-Metisse	745	Eastleigh
45	C. Thomas	B.S.A.	500	Rugby
46	D. Clark	Norton	499	Harrow
47	K. Cowley	Seeley	499	Luton
48	R. Tomlinson	Norton	499	Northolt
49	P. G. Smith	Norton	750	New Malden
50	V. A. Farnhill Entrant: David Walpole	Norton	499	Dunstable
51	J. Cowie Entrant: Dresda Autos Ltd.	Dresda	649	London
54	S. Moynihan	Norton	500	Potters Bar
55	R. Peers-Jones	Norton	690	New Malden

Fastest Lap No. Time Speed mph

Finish Order	1st	2nd	3rd	4th	5th	6th
Time Speed						

Race 9

Event Three—Ten Laps

Solos: Over 175 cc and not over 1,000 cc

No.	Driver	Machine	c.c.	Town
1	P. Williams Entrant: Norton Villiers Performance Shop	Norton	750	Andover
2	D. Browning Entrant: Jack Browning	Yamsel	350	Cheltenham
3	R. Butcher Entrant: Mrs. N. Ivy	Ivy-Yamaha	350	Tonbridge
4	P. Mahoney Entrant: Kuhn-Shell Team	Kuhn-Norton	750	Crayford
5	N. Griffiths	Norton	500	Rochester
6	B. Ditchburn Entrant: Broad Motorcycles Ltd.	Weslake-Triumph	750	Gravesend
7	A. Dunscombe Entrant: Vic Camp Motor Cycles Ltd.	Ducati	450	Romford
8	M. Carney Entrant: Reg Thomas	Kawasaki	498	Wallington
9	J. Harvey Entrant: T. W. Kirby	Kirby-Metisse	496	Colchester
10	M. Ashwood Entrant: Monty & Ward Ltd.	Weslake-Metisse	750	Edenbridge
11	C. Brown	Mularney-Norton	499	Luton
13	T. Rodger Entrant: Keith Burns	Seeley	496	Windlesham
14	G. L. Bailey Entrant: R.B. Racing Equipe	Weslake-Metisse	700	Croydon
15	B. Edwards	Triumph	650	London
16	P. Butler Entrant: Boyer of Bromley Ltd.	Triumph	750	London
17	P. Gibson Entrant: Keith Burns	Seeley	496	Romford
19	D. J. Habel	Petty-Norton	499	Crowthorne
20	C. Neve	Seeley	496	Portslade
21	D. Nixon Entrant: Boyer of Bromley Ltd.	Triumph	750	Ashford
22	A. E. Rogers	Seeley	496	Enfield
23	C. Sanby Entrant: Kuhn-Shell Team	Kuhn-Norton	745	Hatfield
24	G. W. Sharp	Kuhn-Seeley	750	Edgware
26	B. Rodwell Entrant: Dresda Autos Ltd.	Dresda	649	London
30	B. Lee	Honda	500	Southampton
74	R. Chandler Entrant: Redex T-Macc	Kawasaki	500	Sevenoaks

Reserves as for Event Four

Enter results on page 27

Race 10

Event Six—Final—Ten Laps

Sidecars up to 1,300 cc

No.	Driver/Passenger	Machine	c.c.	Town
From Heat One				
.....
.....
.....
From Heat Two				
.....
.....
.....
From Heat Three				
.....
.....
.....
From Heat Four				
.....
.....
.....
Fastest Lap No..... Time..... Speed.....mph				

Finish Order	1st	2nd	3rd	4th	5th	6th
Time Speed						

Result. Race 9

Fastest Lap No..... Time..... Speed.....mph

Finish Order	1st	2nd	3rd	4th	5th	6th
Time Speed						

Race 11

Event Seven—Eight Laps

Solos: Vintage and Post Vintage Machines over 250 cc and not over 750 cc

No.	Driver	Machine	c.c.	Year	Town
1	S. J. L. Grigson	<i>New Imperial</i>	350	1934	Chobham
2	D. J. Ellis	<i>Rudge</i>	499	1937	Bletchley
3	M. A. Wilkinson	<i>Velocette</i>	495	1938	Narborough
4	M. J. Stratford	<i>Rudge</i>	253	1936	Amersham
5	P. Robson	<i>Norton</i>	490	1933	Market Harborough
6	P. G. Taylor	<i>Scott</i>	500	1930	Cambridge
7	C. Williams	<i>Scott</i>	625	1928	Chepstow
8	R. Morgan	<i>Norton</i>	490	1928	Newport
9	M. J. Broom	<i>Triumph</i>	498	1939	Queniborough
10	J. F. Wilkinson	<i>Norton</i>	596	1936	London
11	W. H. Wilshire	<i>Rudge</i>	500	1929	Watford
12	D. P. Lecoq	<i>Scott</i>	520	1929	Caddington
13	H. C. Harrison	<i>Scott</i>	498	1930	London
14	A. Evans	<i>Norton</i>	348	1935	Leicester
15	J. Skeat	<i>Rudge</i>	500	1937	London
16	L. D. Escott	<i>Ariel</i>	498	1930	London
17	G. Harris	<i>Scott</i>	600	1935	Windsor
18	D. Treen	<i>Triumph</i>	350	1937	St. Leonards
19	J. R. Lane	<i>Norton</i>	490	1928	Chatham
20	D. Jackson	<i>Velocette</i>	495	1936	Towcester
21	D. A. Daly	<i>Velocette</i>	350	1939	Brentwood
22	G. B. Richardson	<i>Norton</i>	500	1939	Colchester
23	J. Harvey	<i>Norton</i>	440	1936	Colchester

Fastest Lap No. Time Speed mph

Finish Order	1st	2nd	3rd	4th	5th	6th
Time						
Speed						

Travel Facilities and Entrances

