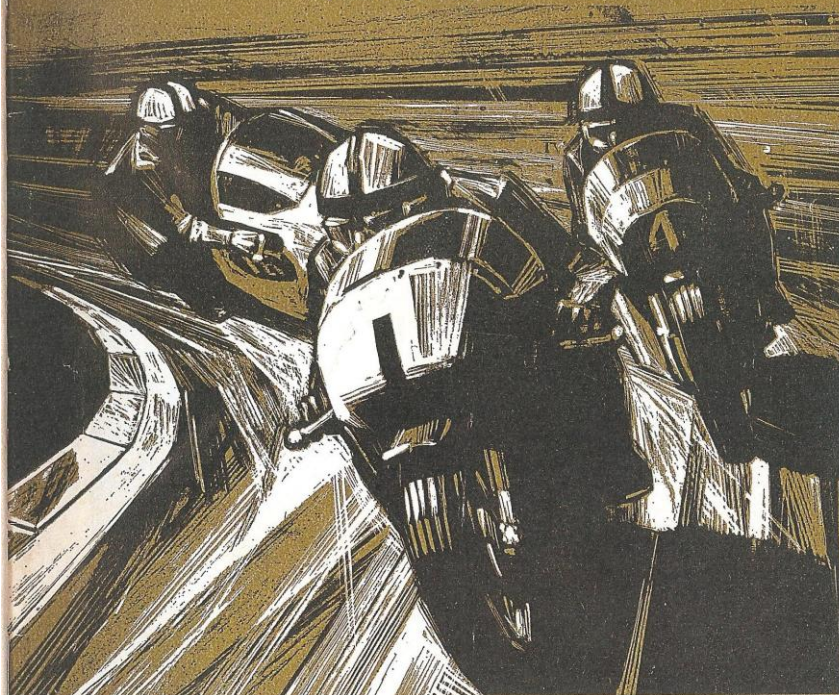




# Monday 1 Sept Crystal Palace

**Metropolitan Meeting 1969**

Organised by British Motor Cycle Racing Club Ltd for Greater London Council  
Official Programme 2/6

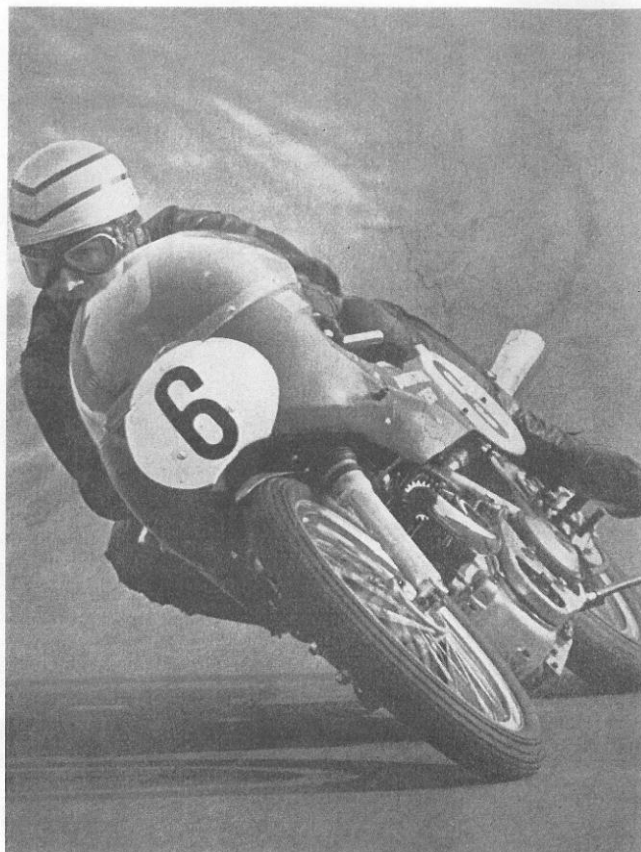


**Motor  
Cycle**

THE RIDER'S  
PAPER

WEDNESDAY 1s.

Ray Pickrell on his way to a new race record in 1,000 cc event at the Easter meeting.  
Photo: Ken Price



## Today's Racing

National Road Race Meeting for Motor Bicycles (Solos) and Motor Cycles with Sidecars.

The Meeting is held under the General Competition Rules of the ACU together with the Supplementary Regulations of the British Motor Cycle Racing Club. Permit No. ACU Q111 PCL No. 6.

### Contents

- 1 Today's Racing
- 2 Officials
- 5 Programme
- 5 Awards
- 7 Competitors
- 14 Palace Portrait
- 16 Easter '69
- 22 Notices
- 23 Flag Signals
- 23 Acknowledgments
- 24 Lap Records
- 25 Lap Speed Table
- 26 Map of Circuit
- 28 Event 1
- 29 Event 2
- 30 Event 3
- 31 Event 4
- 32 Event 5
- 33 Event 6
- 34 Event 7
- 35 Event 8
- 36 Event 9
- 37 Event 10
- 38 Event 11
- 39 Event 12
- 40 Event 13

Travel Guide  
(inside back cover)

The Easter Meeting at the Palace was highlighted by a record breaking spree in which two lap records and three race records were broken. The speed merchants who set up the new records, John Ringwood (who broke the 125 cc lap record and the 125 cc and 250 cc race records), Mick Andrew, Ray Pickrell and Chris Vincent will, with the exception of Chris, all be in action again today; to maintain their supremacy they may well have to establish new records if they are to stay ahead of the star-studded list of challengers.

Organised as usual by the British Motor Cycle Racing Club this meeting promises plenty of variety and excitement. Events within each class are graded into 'junior' and 'senior' races which means that there are thrilling battles between long standing rivals in the high grade events and plenty of opportunity for the stars of the future in the 'junior' races. The programme also includes three events for Three Wheelers and two Production solos events.

With the final rounds of the Castrol British National Road Racing Championships being run today and Championship placings depending on the results there will inevitably be some hard fought racing. In the 350 cc class in the absence of Derek Chatterton (Yamaha) who leads his class at the moment, the names to watch for are Pat Mahoney (Herring Yamaha), Alan Barnett (Kirby Metisse), Martin Carney (Shepherd Kawasaki) and Mick Andrew (Kuhn Seeley), the current Palace 350 cc lap record holder. All well placed in the Championship table these four are likely to be hard pressed by opponents like Ray Pickrell (Aermacchi), John Ringwood (Broad Yamaha) and Martyn Ashwood (Norton). Indeed with an entry list looking like a 'Who's Who' of short circuit riders,

## Today's racing continued

*The Racing Programme is organised by the British Motor Cycle Racing Club*

### Officials

#### President

Air Marshal  
Sir Geoffrey Tuttle,  
KBE, CB, DFC, FRAeS

#### Stewards of the Meeting (Appointed by ACU):

T. E. Ryan  
(Appointed by BMCRC):  
Sir Geoffrey Tuttle  
G. C. Cobbold  
R. C. Walker

#### Judge

J. Gupwell

#### ACU Timekeeper in charge

H. W. Shuttleworth  
(International)

#### Timekeepers

F. C. Toplis (International)  
H. Clenshaw (National)  
W. A. Stone (Grade A)  
R. S. G. Cawse (Grade B)  
F. Micklwright (Grade B)

#### Chief Medical Officer

G. Hadfield, FRCS  
and colleagues

#### Ass Sec of the Meeting

P. J. Lewis

2

any attempt to predict the eventual winner would be foolhardy.

This star entry is repeated in the 500 cc class of the British Championship in which Dave Croxford (Gus Kuhn Seeley) and Alan Barnett, on the superbly prepared Kirby Matchless Metisse, have been battling for points all season. To date the honours have been fairly equally shared, with Croxford in a slender four point lead. Also well in the running is Dave's Gus Kuhn Seeley team mate Mick Andrew, who works at Gus Kuhn Motors, and recently had a most successful outing at the 'Hutch 100' meeting at Brands winning the Production Solo and 350 cc events. Dave Croxford has not raced at the Palace for some years and is likely to get some pretty tough opposition from Palace regulars like Paul Smart (1,000 cc lap record holder) and Charlie Sanby, who despite being supposedly semi-retired beat Dave in a gripping race tussle at the recent Lydden road races.

Adding even more interest to the race although not directly involved in the Championship struggle—will be Ray Pickrell (Dunstall) and Ron Chandler (Seeley). In the 10-lap 250 cc race, which is the first event on the programme, many of the same names will be competing. John Ringwood who won the last 250 cc race at the Palace is likely to be hard pressed by Paul Smart (Yamaha), who finished third in the 250 cc Championship race at the 'Hutch 100' Brands meeting last month, and Clive Offer (Yamaha) who also went extremely well at the same meeting.

In the 15-lap race for Production Solos (up to 1,000 cc) a crowd of Triumph-mounted entries will pit their strength against competitors like Pickrell, the present lap record holder, on

## Today's racing continued

### officials continued

#### Clerk of the Course and Secretary of the Meeting

Jim Swift, PO Box 75,  
33a London Road,  
Kingston upon Thames

#### Starter

P. F. Corbett

#### Lap Scorers

L. Whitby and assistants

#### Chief Marshal

P. H. Spahr

#### Marshals

Members of the BMCRC,  
Kingston & DMCC  
Metropolitan Police  
Motor Clubs  
and other affiliated clubs

#### Scrutineers

E. A. Woods and  
assistants

#### Announcer

A. Robinson

#### Deputy Clerk of the Course

F. A. Gillings

#### Circuit Manager

A. Tyler,  
GLC Parks Dept.

#### Press Officer

Miss E. Mordecai,  
GLC Press Office

the new Dunstall Dominator and Croxford, Blanchard, Andrew and Smart all on Norton Commandos; leading the Triumph assault will be Charlie Sanby, Peter Butler and Martyn Ashwood. Mick Andrew must start favourite after his recent great production win at Brands.

The same names will be clashing again in the 350-1,000 cc event and all in all we are likely to be in for exciting racing and some new records during the course of the afternoon.

# Don't forget!

If you would like your name added to the mailing list of events on the Motor Race circuits in 1970, please write to:  
Circuit Manager  
Crystal Palace Offices  
Anerley Hill  
London, SE19  
or phone 778 4691/9612

FOR THE NEWS AND VIEWS  
BEHIND THE SCENES

# read PADDOCK GOSSIP



every  
week in...

by  
**JOHN  
BROWN**

**Motor  
Cycle  
News**



#### MAKE SURE OF YOUR COPY EVERY WEEK

Either place a regular order with your newsagent, price ninepence, or send £2 5s 0d annual subscription to:— Subscription Department, Motor Cycle News, 117 Park Road, Peterborough.



## Programme

### Awards

#### Event One

1st £20, 2nd £15, 3rd £10,  
4th £8, 5th £6, 6th £3.

#### Event Two

1st £20, 2nd £15, 3rd £10,  
4th £8.

#### Event Three

1st £10, 2nd £7, 3rd £5,  
4th £3.

#### Event Four

1st £10, 2nd £7, 3rd £5,  
4th £3.

#### Event Five

1st £10, 2nd £7, 3rd £5,  
4th £3.

#### Event Six

1st £10, 2nd £7, 3rd £5,  
4th £3.

#### Event Seven

1st £10, 2nd £7, 3rd £5,  
4th £3.

#### Event Eight

1st £50, 2nd £40, 3rd £30,  
4th £20, 5th £10, 6th £5.

#### Event Nine

1st £10, 2nd £7, 3rd £5,  
4th £3.

#### Event Ten

1st £30, 2nd £20, 3rd £15,  
4th £10, 5th £7, 6th £3.

#### Event Eleven

1st £10, 2nd £7, 3rd £5,  
4th £3.

#### Event Twelve

1st £40, 2nd £25, 3rd £15,  
4th £10, 5th £5, 6th £3.

#### Event Thirteen

1st £15, 2nd £10, 3rd £8,  
4th £6, 5th £4, 6th £2.

### 1.45 pm Event 1

Ten-lap Race for Solo Racing Motor Cycles  
over 175 cc and not over 250 cc

### 2.00 pm Event 2

Ten-lap Race for Production Solo Motor  
Cycles over 350 cc and not over 1,000 cc

### 2.20 pm Event 3

Six-lap Race for Solo Racing Motor Cycles  
over 350 cc and not over 1,000 cc

### 2.35 pm Event 4

Six-lap Race for Three-Wheelers over 350 cc  
and not over 1,300 cc

### 2.50 pm Event 5

Six-lap Race for Solo Racing Motor Cycles  
over 175 cc and not over 250 cc

### 3.10 pm Event 6

Six-lap Race for Solo Racing Motor Cycles  
over 250 cc and not over 350 cc

### 3.25 pm Event 7

Six-lap Race for Solo Racing Motor Cycles  
over 350 cc and not over 1,000 cc

### 3.40 pm Event 8

Fifteen-lap Race for Solo Racing Motor  
Cycles over 350 cc and not over 500 cc.  
Final Round of the Castrol British National  
Road Racing Championship



## Programme continued

### Trophies and Special Awards

**The Metropolitan Trophy** will be awarded to the driver making the fastest lap of the day irrespective of class.

**The Sidecar Trophy**, to be held for one year with memento for retention, will be awarded to the driver making the fastest lap of the day in the Three-Wheeler events.

### Special Club Award

**The Les Graham Trophy** (presented to the Club by the late R. L. Graham) to be held for one year with memento for retention, will be awarded for the best performance by a rider who is a BMCRC member, and who is a private owner not in receipt of Manufacturer's or other trade support. For the purposes of this award, any rider who has an entrant will be deemed to be in receipt of trade support whether he be a private owner or not. The final decision in making this award will rest with the judging committee of the BMCRC. No protest against their decision can be entertained.

### 4.10 pm Event 9

Six-lap Race for Three-Wheelers over 350 cc and not over 1,300 cc

### 4.25 pm Event 10

Twelve-lap Race for Solo Racing Motor Cycles over 250 cc and not over 350 cc. Final Round of the Castrol British National Road Racing 350 Championship

### 4.40 pm Event 11

Six-lap Race for Three-Wheelers over 350 cc and not over 1,300 cc

### 4.55 pm Event 12

Fifteen-lap Race for Solo Racing Motor Cycles over 350 cc and not over 1,000 cc

### 5.25 pm Event 13

Ten-lap Race for Production Solo Motor Cycles over 350 cc and not over 1,000 cc

# Competitors

Rider/Entrant	Town	Licence No	Events
Adkin, J.	Slough	396	250
Adley, C.	Canterbury	3749	250
Aldworth, J. R.	Abingdon	1347	250
Ent: Keith Burns		E.42	
Allen, J.	Liverpool	3345	Prod.
Allen, J. D.	Leatherhead	1764	1000, Prod.
Allen, R.	Portsmouth	1491	1000
Andrew, M.	Ware	6	350, 500, 1000, Prod.
Ent: Gus Kuhn Motors Ltd.		E.53	
Antony, T.	London E1	733	250
Armstrong, F. C.	Thaxted	2002	250
Ashwood, M.	Tunbridge Wells	399	250, 350, 500, Prod.
Aslett, M. J.	Weybridge	4022	1000
Avery, M.	London E15	1024	250
Baker, T.	London E14	4033	250
Banks, J. M.	Birmingham	1282	250
Barry, N.	London SW14	3608	500, 1000
Barnett, A. J.	Iver	568	350, 500
Ent: T. W. Kirby Motor Cycles Ltd.		E.2	
Bartlett, B. J.	High Wycombe	1603	1000
Bassindale, J.	Scunthorpe	882	Prod.
Belcher, C.	London SE27	4402	250
Bentley, R. I.	Bishop's Stortford	3839	350
Biscardine, R.	London NW7	2658	350, 1000
Ent: Reg Allen Motor Cycles		E.28	
Blanchard, J.	Crayford	1928	350, 1000, 500, Prod.
Ent: Chuck Customised Components		E.4	
Brooker, A.	London SE20	884	500
Bowers, S. J.	Croydon	1342	1000
Bridle, R. A.	Edenbridge	3861	250
Brown, J. F.	London E17	1165	250
Brown, R. J.	Prestwood	3828	250
Buckmaster, K. G.	St. Albans	2741	1000, Prod.
Burman, G. G.	Potters Bar	100	250
Burton, P. J.	Bethersden	579	250
Butcher, R. E.	Tonbridge	702	350, 500, 1000, Prod.
Ent: R. T. Qualife Engineering		E.32	
Butler, P. A.	London SE17	1969	1000, Prod.
Ent: Boyer of Bromley		E.69	
Capon, L. S.	Guildford	687	1000
Carney, M.	Wallington	1869	250, 350
Ent: Thomas School of Motoring		E.33	
Carter, G.	London SE6	1810	1000, Prod.
Ent: Deeprase Bros Ltd.		E.73	
Cash, D.	London W14	1382	1000

# Bread and honey



A honey of an oil  
for bread and butter engines.  
GTX. The engine protector.

For a free lubrication chart or information sheet on your car, write to: Dept. MCM,  
Castrol Limited, High Road, Cowley, Nr. Uxbridge, Middlesex.

## competitors continued

Rider/Entrant	Town	Licence No	Events
<b>Chandler, R.</b> <i>Ent: Reg Kirby</i>	Kemsing	980 E.47	350, 500, 1000
<b>Chivers, V. A.</b>	Barry	2421	1000, 500
<b>Clark, D. E.</b>	Harrow	1740	Prod.
<b>Cooke, D. W.</b>	Aldershot	515	1000
<b>Corbett, R. W.</b> <i>Ent: J. Browning</i>	Cheltenham	271 E.1	1000
<b>Croxford, D. L.</b> <i>Ent: Gus Kuhn Motors Ltd.</i>	Ruislip	3 E.53	350, 500, 1000, Prod.
<b>Curtis, C. T.</b>	Amersham	1170	1000
<b>Cutting, B. A.</b>	Braintree	4187	1000
<b>Davies, P. K.</b> <i>Ent: Roger Slater</i>	Birmingham	1042 E.137	500
<b>Degens, D. F.</b> <i>Ent: Dresda Autos Ltd.</i>	Hounslow	4154 E.114	250, 350, 1000, Prod.
<b>Denniss, B. A.</b>	London SW16	1817	250
<b>Dey, W.</b>	Little Bookham	505	1000
<b>Ditchburn, B.</b>	Northfleet	2168	350, 1000
<b>Dix, M. J.</b>	High Wycombe	479	250
<b>Dow, W. J.</b>	Little Bookham	500	1000
<b>Downing, R. E.</b>	Bristol	190	1000
<b>Duxbury, G.</b> <i>Ent: Reg Allen Motor Cycles</i>	Chertsey	2910 E.28	500
<b>Eldridge, S.</b>	Marlow	153	350
<b>Elliott, T. C.</b>	Perivale	4313	350
<b>Elsdon, J. R.</b>	Orpington	2898	250
<b>Evans, D. R.</b>	Wotton-u-Edge	4158	350
<b>Falcke, G.</b>	St Albans	511	Prod.
<b>Faulks, R. L.</b>	Cheltenham	4252	Prod.
<b>Filler, D.</b>	Hatfield	800	350, 1000
<b>Freestone, D.</b>	Havant	1467	250
<b>Fryer, A. S.</b>	London N16	2688	350
<b>Gaites, B. P.</b>	London NW10	3961	1000
<b>Garraway, G.</b>	London W4	952	350
<b>Gardiner, T.</b>	Cuxton	3636	1000
<b>Gibson, D. G.</b>	London N6	1313	250
<b>Gibson, P.</b>	Romford	827	1000
<b>Godfrey, A. M.</b>	Southampton	16	350, 500, 1000, Prod.
<b>Green, G.</b>	Coventry	1968	Prod.
<b>Griffin, L. S.</b>	Leicester	1307	250
<b>Grotefeld, T. P.</b>	London NW7	2680	250, 350
<b>Grover, W.</b>	Water Orton	3215	1000

competitors continued

Rider/Entrant	Town	Licence No	Events
Guilfoyle, D.	Harwich	4231	350
Guyver, R.	London NW5	321	250
Habel, D. J.	Wokingham	539	1000
Hall, D.	London NW2	1701	1000
Hammarling, P.	London N6	4247	Prod.
Hampton, K. G.	Folkestone	537	1000
Harrington, R.	Rugby	2702	Prod.
Harrison, M.	London N4	2613	250
Harvey, A. J.	Colchester	1706	1000, 500
Hill, R. A.	Chelsfield	122	250
Hodgkins, W.	Bromley	997	1000
Holbrook, D.	Bristol	1456	250
Holt, C.	Chatteris	1275	1000
Hope, C.	Hitchin	4331	250
House, D. C.	High Wycombe	1905	1000
Humber, P.	London NW3	4053	500, 1000
Hunter, N.	Bristol	3969	500, 1000
Hutton, T. R.	Harlow	917	250
Jackson, T.	Cranbrook	647	350
Jeavons, M.	Wolverhampton	3842	250
Jebson, M. H.	London SE5	4234	1000
Jones, G.	Newmarket	4386	350
Jones, J. W.	Elstree	2570	1000
Jordan, J. H.	Stonehouse	4197	350
Jorgensen, G. R.	Ingatestone	2392	250
Jorgensen, M. I.	Ingatestone	2393	250
Judd, B.	Crawley	473	350
Kanka, J.	London NW1	115	1000, Prod.
Kemp, R. D.	Hamble	4303	1000
Kenny, M.	Sunbury	3003	1000
Lancaster, J. C.	Thornton Heath	483	350
Ent: Aldwin Racing Developments		E.11	
Lavender, J.	Slough	4064	1000
Lee, D. G. L.	Enfield	1754	350
Lee, M.	Crowborough	4993	1000
Lindsey, K. A.	Battle	1501	350
Lunn, D.	Elstree	1614	250
McGonigle, T. J.	Woking	2622	250, 1000
Mahoney, P. M.	Crayford	636	250, 350, 1000
Miller, R. W.	Dorking	1404	250

10

competitors continued

Rider/Entrant	Town	Licence No	Events
Monnery, A. B.	Leatherhead	3313	Prod.
Morgan, N. C. G.	Newbury	151	500, 1000
Morrell, S.	Ware	2001	350
Munn, W.	Maidstone	636	350
Neve, C.	Portslade	540	1000
Ent: G. Howell		E.10	
Newman, P.	Burgess Hill	1554	350
Nixon, D. J.	Bromley	2058	1000, Prod.
Ent: Boyer of Bromley Ltd.		E.69	
Noke, P. A.	Epping	1853	1000
Norris, I.	Bradford on Avon	1943	250
O'Brien, J. M.	Luton	510	350
Odlin, T. H.	Scunthorpe	2803	Prod.
Offer, C.	Caterham	2695	350
Oldfield, J. H.	Molesey	2894	350
Oswin, A. J.	Teddington	3674	1000
Page, D. J.	Newbury	1587	250, 500, 1000
Parfitt, C. F.	Norwich	1718	250
Parfitt, P. F.	Norwich	1719	250
Pepper, J. R.	London N20	1681	500, 1000
Phelps, L.	Orpington	1996	350, 1000, Prod.
Ent: Elite Motors Ltd.		E.50	
Pickrell, R.	Harrow	2	350, 500, 1000, Prod.
Ent: Paul Dunstall Motor Cycles		E.38	
Pinnock, A. F.	London SE23	1034	250
Potter, D. G.	Crawley	4244	1000
Randle, A.	West Croydon	614	250
Ratcliffe, I.	Croydon	677	500, 1000
Reeves, C. P.	London SE9	901	1000
Ringwood, J. F.	Buckhurst Hill	111	250, 350
Ent: Broad Motors Ltd.		E.26	
Roberts, J. J.	Witham	3807	250
Roberts, W. A.	Wickford	4133	1000
Robertson, H. A.	St Albans	525	Prod.
Robinson, H. M.	Northampton	725	1000
Ent: A. Bennett		E.80	
Rodgers, J.	London SE22	1955	1000
Rodwell, B.	London SE22	619	350, 1000, Prod.
Ent: Dresda Autos Ltd.		E.114	
Rogers, A. E.	Enfield	1111	1000
Rudling, R.	Portsmouth	1203	Prod.

11

## competitors continued

Rider/Entrant	Town	Licence No	Events
<b>Sadler, J. H. L.</b>	Woodford Green	3079	1000
<b>Sanby, C. W.</b>	Hatfield	2994 350, 500, 1000, Prod. E.53 (350, Prod.) E.47 (500, 1000)	
<i>Ents: Gus Kuhn Motors Ltd. Reg Kirby</i>			
<b>Sayers, P. R.</b>	Tewkesbury	2529	250
<b>Sears, M. E.</b>	Rainham	2963	1000
<i>Ent: CSMA Racing Team</i>			
<b>Seward, B.</b>	Southampton	1663	250
<b>Sharp, G. W.</b>	Edgware	799	350, 500, Prod.
<b>Sibley, R. L.</b>	Upminster	4284	1000
<b>Simmons, R.</b>	St Mary Cray	505	1000
<b>Simpson, D. G.</b>	Dunmow	4056	Prod.
<b>Smart, P. A.</b>	Maidstone	501	250, 500, 1000, Prod.
<b>Smiley, P. F.</b>	Hemel Hempstead	1680	250
<b>Smith, A. R.</b>	West Drayton	2895	Prod.
<b>Smith, B. M.</b>	Reigate	516	500, 1000
<b>Sparham, J.</b>	Rainham		350
<b>Sparrow, T.</b>	Beckenham	1056	350
<i>Ent: Joe Dunphy</i>			
<b>Steward, M.</b>	Weybridge	1441	1000
<b>Street, D.</b>	Romford	2877	250
<b>Taylor, D. J.</b>	Rugby	1436	250
<b>Taylor, J. R.</b>	Gravesend	802	350
<i>Ent: K. Burns</i>			
<b>Taylor, M. H.</b>	London E11	4235	250
<b>Thomas, G.</b>	Rugby	1311	250
<b>Thompson, I.</b>	Dedworth	2519	250, 350
<i>Ent: South Western Scooters</i>			
<b>Timson, B. J.</b>	Crawley	1915	1000
<b>Tompkins, D. J.</b>	St Leonards	3269	1000
<b>Veal, B. J.</b>	St Mary Cray	2205	250
<b>Wackett, B.</b>	Waltham Abbey	4212	1000
<b>Walker, B.</b>	Stonehouse	1259	1000
<b>Wall, C. P.</b>	Hayes	4418	Prod.
<b>Westell, B.</b>	Chelsfield	2399	1000
<b>White, D. F.</b>	Mitcham	3984	1000
<b>Woods, S. V.</b>	London NW9	834	250
<b>Wootton, P.</b>	Bath	211	250
<b>Wyncoll, P.</b>	Colchester	4210	Prod.
<b>Young, G. C.</b>	London NW8	1480	250, 500
<b>Young, V.</b>	Edgware	4087	1000

## competitors continued

## THREE WHEELERS

Driver/Entrant	Town	Licence No	Passenger
<b>Barker, J.</b>	Hornchurch	1185	C. Emmins
<b>Barwick, F.</b>	Banstead	891	R. Wright
<i>Ent: Baldwin Racing Developments Ltd.</i>			
<b>Butler, A. V.</b>	Enfield	109	I. Burton
<b>Camus, D.</b>	Camberley	4219	F. Ruel
<b>Carter, C.</b>	Gillingham	2590	D. Leigh
<b>Cass, R.</b>	Woodford Bridge	906	D. Jose
<b>Comley, D.</b>	Swindon	1322	C. M. Nickels
<b>Digby, S.</b>	Stoke Poges	1089	B. Haddrell
<i>Ent: Five Star Speed Equipe</i>			
<b>Douglas, J. W.</b>	London SW19	532	G. Bailey
<b>Downes, S. J.</b>	Dagenham	502	J. O. Harris
<b>Evans, I.</b>	Beaconsfield	1714	J. Mathuson
<i>Ent: P. Emery</i>			
<b>Fiddaman, M. G.</b>	Colchester	C.312	J. Fiddaman
<b>Finch, P. H.</b>	Sidcup	3529	R. W. Symes
<b>Gray, B. J.</b>	High Wycombe	4281	J. Robinson
<b>Hardcastle, P. J.</b>	London E17	607	T. Halliday
<i>Ent: Chuck Customised Components</i>			
<b>James, P.</b>	London N9	1273	T. R. Barton
<b>Kateley, F.</b>	Sevenoaks	2648	V. Sampson
<b>Langridge, L.</b>	Horsham	1998	N. Bullen
<b>Lloyd, E. N.</b>	London E6	603	T. Harrington
<b>Moss, A.</b>	Sidcup	714	R. English
<b>Mumford, W. T.</b>	Barking	773	J. J. Mumford
<b>Munns, R.</b>	Enfield	3776	D. Stevens
<b>MacEwan, A.</b>	Tonbridge	4121	T. Pleasance
<b>O'Dell, G. W.</b>	Hemel Hempstead	991	A. J. Gosling
<b>Offen, B.</b>	Claygate	2941	J. Dysart
<b>Plummer, D.</b>	Laleham	2305	M. Brett
<b>Potter, M.</b>	Ipswich	597	T. J. Fiddaman
<b>Powell, R. F. G.</b>	London NW5	2048	R. C. Janes
<b>Swain, J.</b>	Cuckfield	4350	D. Coomber
<i>Ent: Dresda Autos Ltd.</i>			
<b>Swann, C.</b>	Croydon	4267	S. Orth
<b>Sansum, A.</b>	Romford	1133	A. MacFadzean
<i>Ent: R. T. Quaife Engineering</i>			
<b>Teasdale, A.</b>	Chessington	1726	N. A. Boret
<b>Tress, J. F.</b>	Sittingbourne	770	A. C. Clark
<b>Vant, E. L.</b>	Edgware	672	R. D. Moore
<b>Weedy, T.</b>	Eastleigh	1533	D. Rickman
<b>Wilson, R.</b>	Larkfield	4413	M. Cole
<b>Woodcock, T.</b>	Tenterden	4436	Mrs. J. Woodcock
<b>Wright, A.</b>	Romford	2542	A. Poole
<b>Young, D. H.</b>	Horsham	2061	R. G. Mills



## Palace Portrait

### Dave Croxford

This afternoon Dave Croxford will be racing at the Palace for the first time in many years. His earliest memories of the circuit date from his experiences as a 'chair' back in 1961-2, since when he has raced just about everywhere but the Palace.

Dave has been solo racing now for six years and had perhaps his most successful season ever in 1968 when he captured such illustrious titles as King of Brands, Master of Mallory and Lord of Lydden. This season Dave has been riding for Gus Kuhn Motors Ltd (Clapham) who maintain the 350 cc and 500 cc Gus Kuhn Seeleys and the 750 cc G-K Commando with which Dave has already had a number of important wins.

These include: Brands Hatch (500 cc—2 March and 26 May); Lydden (350 cc—30 March); Castle Coombe (500 cc—26 April); Mallory (500 cc and Production solo—25 May). Dave is once again leading the 500 cc British National Road Racing Championship which he won last year. His most dangerous and consistent opponent in earlier rounds has been Alan Barnett who was second to Dave in 1968 and is therefore pulling out all the stops this season. To date the honours have been fairly equally shared; Dave has only a four point lead, so there is obviously going to be a real battle for victory in this final decisive round. To clinch the Championship Dave must either beat Alan Barnett or at least finish no more than one place behind him. It remains to be seen if Dave, a comparative stranger to the Palace circuit, can triumph over strong competition from riders who are more familiar with the tight 1.39 mile circuit.

Dave is 27 years old and when not racing works as a panel beater. Married and the father of two children, a boy and a girl—both too young to evince much interest in racing as yet—he lives in Ruislip Gardens, Middlesex.



## Easter '69

*All photos taken by GLC Architect's Department (Photographic Unit) unless otherwise stated.*

*Top: R. Pickrell leads the field.*

*Bottom: A tightly bunched field in the 125 cc event.*

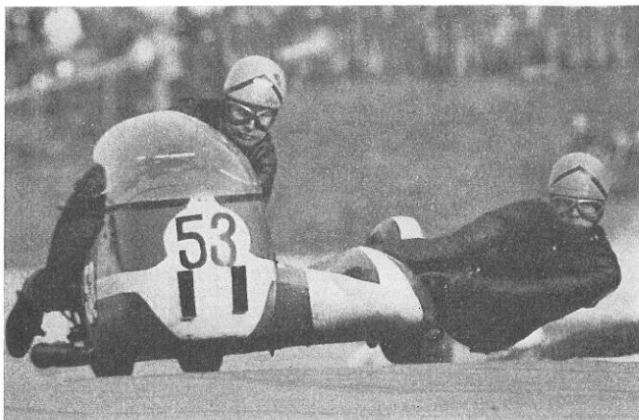


*Mrs. Rose Arnold, who was 'chairing' for Norman Hanks at the Easter meeting*



*Top: Grim concentration in one of the sidecar heats on 7 April.*

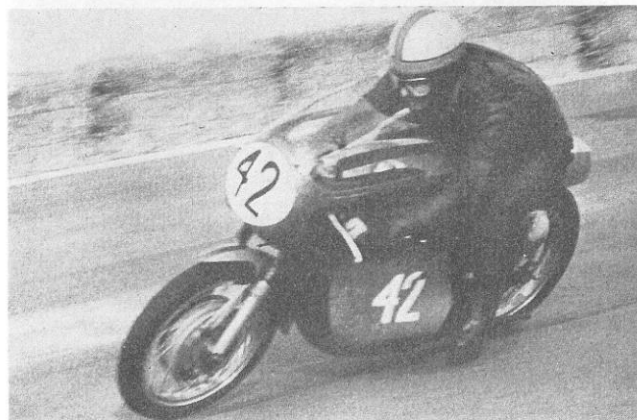
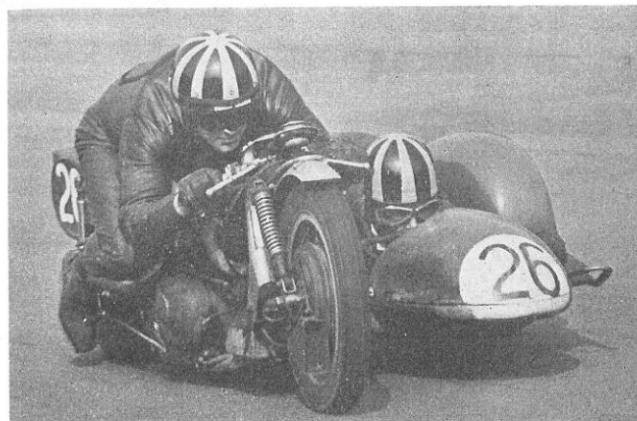
*Bottom: C. Mortimer on a Rudge Whitworth 499 in the Easter vintage race. Eventual winner C. Williams (Scott 625).*



18

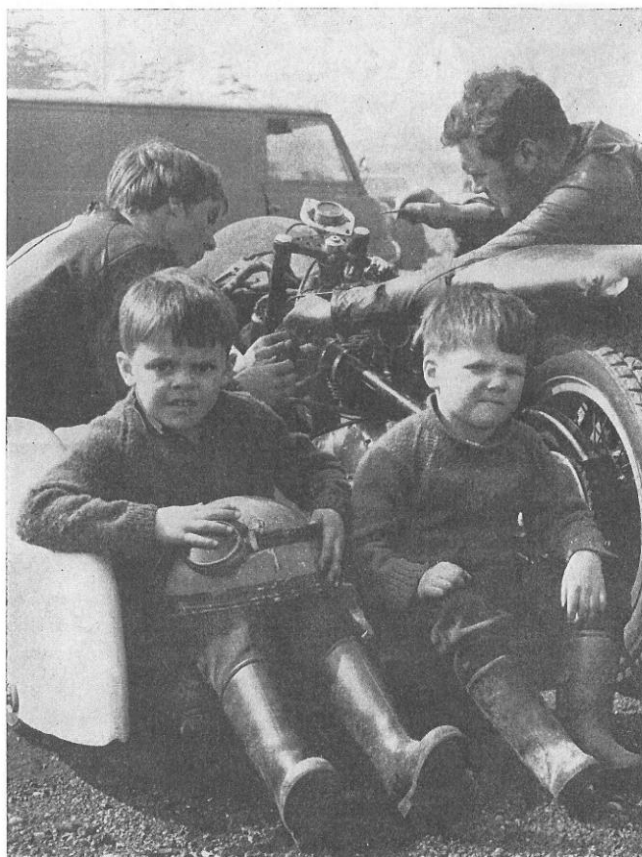
*Top: Norman Hanks with Rose Arnold chairing in the up to 1300 cc sidecar event. Eventual winner C. Vincent (BSA Watsonian).*

*Bottom: John Ringwood on his way to a new lap record and victory in the 250 cc event.*



19

Paddock 'Pic'

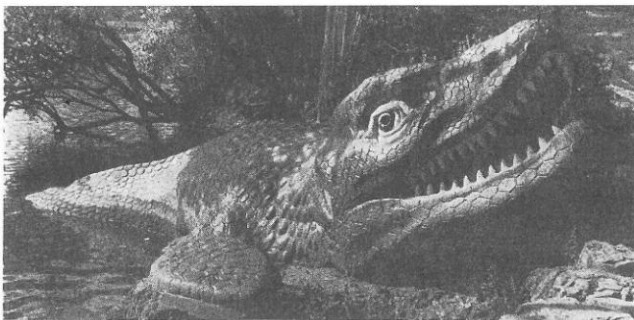


# CRYSTAL PALACE '69

During Race Meetings **Pass out tickets** can be obtained at the Ramp Bend or Penge entrances for those wishing to take advantage of the following facilities in Crystal Palace Park.

**Children's Zoo** There are many interesting birds and animals on display, some of which can be safely handled by children of all ages. The Zoo is open daily until the end of September as follows: Monday to Friday (School term time) 1.30 pm—5.30 pm. School holidays, weekends and Bank Holidays 11 am to 6 pm. **Pony and Trap** and pony rides for children are available in a nearby enclosure.





A generous size **Sand Pit** for children to play in is also sited near to the Zoo and pony ride enclosure, with adjacent children's toilets.

**The Play Park** intended for children from 5 years up to school leaving age, is situated in the corner of the cricket field. Here children can freely take part in a variety of activities including climbing, playing on rope railways and balancing apparatus. A hut, especially useful in wet weather, provides facilities for painting, modelling, handicrafts and table tennis. Trained playleaders are in charge. The play park is open until the beginning of September.

**The One O'clock club** provides special facilities for the under fives. Mothers are quite free to play with their children or to rest but must remain in the area of the club while their children are there. Admission is free and any child under five may join in water and sand play, modelling, painting and drawing. A hut is available. The club is staffed by trained women play leaders and is open from 1 pm until 4.30 pm each weekday throughout the year.

**Boating** Rowing boats are available for hire in the lake at a charge of 4/- per hour.

**Fishing** Pike, perch, roach and bream as well as some other coarse fish can be caught in the boating lake. Daily tickets cost 1/6d. per day and 9d. for children under 16.

**Catering** A restaurant, situated between the lake and the Penge entrance, offers tea, coffee, minerals, light snacks and ice cream at reasonable prices.

And finally the **Crystal Palace Monsters**. These life-size models of prehistoric animals are sited on the island in the boating and fishing lake. They are well worth a visit before you leave.

The park is, of course, open every day for the enjoyment of all. Details of concerts, light music, and children's shows are given in "Open Air Entertainment 1969" obtainable price 1/- (postage and packing 6d.) from *The Acting Chief Officer of the Parks Department, Cavell House, 2a Charing Cross Road, WC2* (Telephone: 01-836 5464 Extension 131), W. H. Smith Bookstalls, or any GLC park

# Crystal Palace Motor Cycle Racing Calendar 1970

## Provisional Dates

**Easter Monday, 30 March**

**National Motor Cycle Race Meeting**

Organised for GLC by SE Centre ACU

**Summer Bank Holiday, 31 August**

**Metropolitan Meeting**

Organised for GLC by British Motor Cycle Racing Club

## Note

All details are correct at the time of publication.

## Mailing List

If you would like to receive details of events on Crystal Palace Circuit, your name can be added to our mailing list if you ring 01-778 4691 or write to the Circuit Manager, Ref. JS/P, Crystal Palace Offices, Anerley Hill, London, SE19.



# Thinking of winter?



## Artificial Ski-slope

### Crystal Palace Park

Facilities for skiing instruction and practice throughout the winter months. (Starting October 11) Floodlighting provided for evening use.

Available for group instruction for beginners and moderate skiers, hiring by clubs, etc and use by individual skiers.

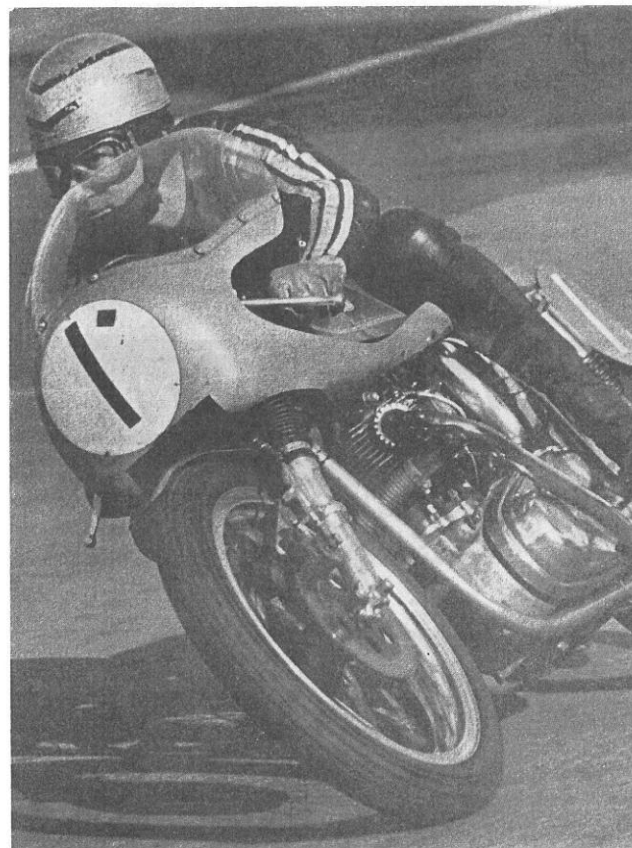
Full details are available from:

The Director, Crystal Palace National Sports Centre, Norwood, SE19.  
(Tel 01-778 0131)

iv

*Ray Pickrell on his way to a new lap record in 1,000 cc production solo event.*

*Photo: Ken Price*



21

## Notices

**Warning to the Public. Motor Cycle Racing is Dangerous.** Admission to the track is upon the condition that the promoters, organisers and those conducting the Meeting and all persons having any connection therewith for the purpose of the Meeting, including the owners of Crystal Palace and the drivers or riders and owners of vehicles and passengers in the vehicles taking part in the Meeting, are relieved of all liability (if any) arising out of accidents causing damage, loss or personal injury to spectators.

**Dogs** are not admitted in the interests of safety.

**Programme Copyright.** This programme, including the list of competitors and their racing numbers, is copyright.

**The Greater London Council** reserves the right to postpone, abandon, or cancel the race meeting or any part thereof.

**The Promoters** accept entries and driver nominations in good faith, but have no control over circumstances affecting non-starters. Every effort is made to adhere to the printed programme of competitors. The promoters, however, cannot accept responsibility for the failure of any driver or motor cycle to appear.

**Paddock Tickets** price 10s each, in addition to admission charge, can be obtained at the pay-box of the pedestrian bridge adjacent to Crystal Palace station. Only a limited number are available.

# Belle Vue

## MANCHESTER



**1st DIVISION**  
**'ACES'**

**2nd DIVISION**  
**'COLTS'**

**The North's**  
**Finest Venue**  
**For**  
**MOTOR**  
**SPORT!**

**SPEEDWAY OF**  
**STOCK CARRACING**

**EVERY SATURDAY**  
**& BANK HOLIDAYS**  
**8-7 p.m.**

**THIS MONTH**

**SPEEDWAY**  
1st Division at 7 p.m.  
SATURDAYS  
Sept. 6, 20, 27.  
2nd DIVISION at 7.30 p.m.  
WEDNESDAYS  
Sept. 3, 10, 17, 24.

**STOCK CARS**  
SATURDAY  
Sept. 13 at 7 p.m.

**ZOO and GARDENS**  
Open Daily 10 a.m.  
Huge Funfair  
Dancing, Wrestling  
Ten Pin Bowling

## Flag Signals

### The following signals will be given in today's races

National Flag—Start  
Black (with number)—that driver to stop  
Green—Course clear  
Yellow/Red Stripes—oil on course  
Red—stop (all drivers)  
Yellow/Black Diagonal—last lap  
Yellow—danger, drive slowly  
Chequered Black and White—Finish

### Grid Positions

These will be found on each race page.

### Racing Numbers

The number plate on the front of every machine will be white with black numbers. Side number plates will be as indicated in the programme on each race page.

### Advertising

Enquiries for advertising space should be made to GLC Supplies Department (Programme Advertisements), Room 95, County Hall, SE1 Waterloo 5000 Extensions 6465 or 6367

### Acknowledgements

All fire precautions and fire fighting services by Antifyre  
Breakdown services by S. G. Smith (Motors) Ltd., 13-17 East Dulwich Road, SE22  
Gilberts Motors Ltd, 304-308 Sangley Road, SE6  
Streamline Motor-Cycles, 525 Lordship Lane, SE22  
First Aid Services by St John Ambulance Brigade  
Duplicating and office equipment loaned and operated by Roneo Ltd, Littlers Close, Merton Abbey, SW19  
Ambulances: London Ambulance Service, Greater London Council.

### Lost Property

Lost property should be handed to any uniformed keeper or any member of the staff wearing a lapel badge or an armband, or handed into the Crystal Palace Offices, Anerley Hill, SE19.

Enquiries about lost property should be made to the Park Superintendent's Office near the Penge entrance (Telephone 01-778 7148).

# Records and Lap Speed Table

Road Racing Circuit—Motor Cycles

Lap Records up to and including meeting on April 7, 1969

Class	Driver	Machine	Time (secs)	Speed (mph)	Date
125 cc solo	J. Ringwood	MZ 125	68.2	73.37	7.4.69
250 cc solo	I. Goddard	Yamaha	65.0	76.98	15.4.68
350 cc solo	M. Andrew	Gus Kuhn Seeley 348	64.4	77.7	7.4.69
500 cc solo	P. J. Dunphy	Norton	62.4	80.19	5.8.63
1,000 cc solo	P. A. Smart	Curley Norton	62.2	80.45	15.4.68
1,000 cc Production solos	R. Pickrell	Dunstall 745	64.0	78.19	2.9.68
Three-wheelers	C. Vincent	BSA Watsonian	65.4	76.51	7.4.69

Race Records up to and including meeting on April 7, 1969

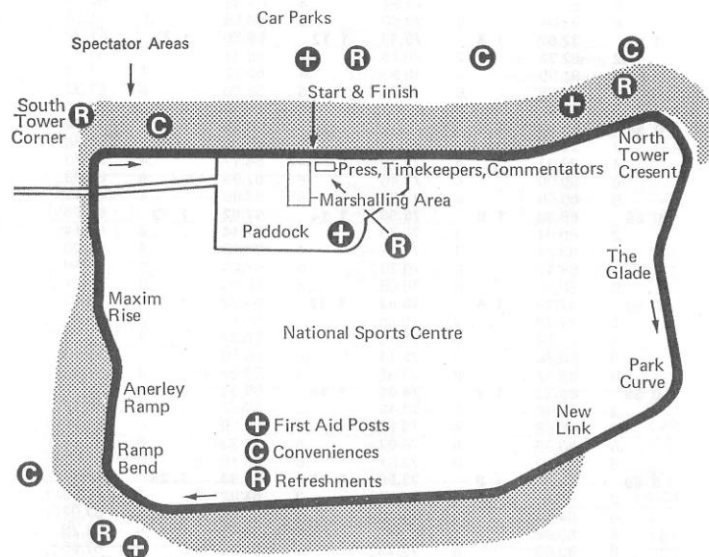
Class	Driver	Machine	Speed (mph)	Date
125 cc	J. Ringwood	MZ 125	70.65	7.4.69
250 cc	J. Ringwood	Broad Yamaha	74.63	7.4.69
350 cc	J. Blanchard	Norton	75.53	30.8.65
500 cc	P. J. Dunphy	Norton	77.82	5.8.63
1,000 cc solo	R. Pickrell	Dunstall 745	78.38	7.4.69
1,000 cc Production solos	P. A. Butler	Triumph	74.36	28.8.67
Three-wheelers	C. Vincent	BSA Watsonian	73.41	7.4.69

1 lap—1.39 miles

Lap Time m s	Speed mph	Lap Time m s	Speed mph	Lap Time m s	Speed mph	Lap Time m s	Speed mph
0 51	98.12	1 0	83.40	1 9	72.52	1 18	64.15
.2	97.73	.2	83.12	.2	72.31	.2	63.99
.4	97.35	.4	82.85	.4	72.10	.4	63.83
.6	96.98	.6	82.57	.6	71.90	.6	63.66
.8	96.60	.8	82.20	.8	71.69	.8	63.50
0 52	96.23	1 1	82.03	1 10	71.49	1 19	63.34
.2	95.86	.2	81.76	.2	71.28	.2	63.18
.4	95.50	.4	81.50	.4	71.08	.4	63.02
.6	95.13	.6	81.23	.6	70.88	.6	62.86
.8	94.77	.8	80.97	.8	70.68	.8	62.71
0 53	94.42	1 2	80.71	1 11	70.48	1 20	62.55
.2	94.06	.2	80.45	.2	70.28	.2	62.39
.4	93.71	.4	80.19	.4	70.08	.4	62.24
.6	93.36	.6	79.94	.6	69.89	.6	62.08
.8	93.01	.8	79.68	.8	69.69	.8	61.93
0 54	92.67	1 3	79.43	1 12	69.50	1 21	61.78
.2	92.32	.2	79.18	.2	69.31	.2	61.63
.4	91.99	.4	78.93	.4	69.12	.4	61.47
.6	91.65	.6	78.68	.6	68.93	.6	61.32
.8	91.31	.8	78.43	.8	68.74	.8	61.17
0 55	90.98	1 4	78.19	1 13	68.55	1 22	61.02
.2	90.65	.2	77.94	.2	68.36	.2	60.88
.4	90.32	.4	77.70	.4	68.17	.4	60.73
.6	90.00	.6	77.46	.6	67.99	.6	60.58
.8	89.68	.8	77.22	.8	67.80	.8	60.43
0 56	89.36	1 5	76.98	1 14	67.62	1 23	60.29
.2	89.04	.2	76.75	.2	67.44	.2	60.14
.4	88.72	.4	76.51	.4	67.26	.4	60.00
.6	88.41	.6	76.28	.6	67.08	.6	59.86
.8	88.10	.8	76.08	.8	66.90	.8	59.71
0 57	87.79	1 6	75.82	1 15	66.72	1 24	59.57
.2	87.48	.2	75.59	.2	66.54	.2	59.43
.4	87.18	.4	75.36	.4	66.37	.4	59.29
.6	86.88	.6	75.14	.6	66.19	.6	59.15
.8	86.57	.8	74.91	.8	66.02	.8	59.01
0 58	86.28	1 7	74.69	1 16	65.84	1 25	58.87
.2	85.98	.2	74.46	.2	65.67	.2	58.73
.4	85.68	.4	74.24	.4	65.50	.4	58.59
.6	85.39	.6	74.02	.6	65.33	.6	58.46
.8	85.10	.8	73.81	.8	65.16	.8	58.32
0 59	84.81	1 8	73.59	1 17	64.99	1 26	58.19
.2	84.53	.2	73.37	.2	64.82	.2	58.05
.4	84.24	.4	73.16	.4	64.65	.4	57.92
.6	83.96	.6	72.94	.6	64.48	.6	57.78
.8	83.68	.8	72.73	.8	64.32	.8	57.65

## Map of Circuit

At the points marked (R) there is a Licensed Bar and Snacks, Tea and Cold Drinks are available. Hot Dogs, Hamburgers, Cold Drinks, Ice Cream, Sweets and Cigarettes are available from additional points around the Circuit.



26

## Stadia Catering Service

is happy to announce that a permanent feature of the Circuit is the

## Paddock Restaurant

This is open to the General Public and will serve Breakfast from 8 am. The Lunch Menu will feature a choice of either a Salad Bowl or Hot Meals available until the end of the meeting.

Snacks and a Licensed Bar are also available in the Paddock Area.

27

# Event 1

1.45 pm

Ten-lap race for Solos over 175 and not over 250 cc

Number Plates: Green Plate/White Numbers

Riding No. Rider, cc Machine, Grid Pos.

1	P. A. Smart 247 Yamaha	1	18	C. F. Parfitt 246 Yamaha	18
2	M. Carney 248 Shepherd Suzuki	6	19	D. Street 250 Greeves	19
3	M. Ashwood 248 Arter Aermacchi	7	20	A. Randle 246 Yamaha	10
4	D. F. Degens 250 Ducati	8	21	J. Banks 246 Yamaha	21
5	T. P. Grotefeld 246 Padgett Yamaha	2	22	B. Seward 246 Yamaha	22
6	J. F. Ringwood 246 Broad Yamaha	3	23	J. F. Brown 248 Ducati	23
7	P. Mahoney 246 Herring Yamaha	4	24	R. W. Miller 244 Bultaco	24
8	D. G. Gibson 250 Yamaha	9	25	G. G. Burman 248 Ducati	25
9	C. Offer 249 Yamaha	5	26	D. C. Armstrong 246 Yamaha	26
10	S. V. Woods 246 Yamaha	14			
11	A. F. Pinnock 246 Yamaha	11			
12	D. J. Page 248 Bultaco	12			
14	J. R. Aldworth 246 Yamaha	20			
15	I. Norris 246 Yamaha	15			
16	M. J. Dix 246 Chat Yamaha	16			
17	M. Harrison 247 Chat Greeves	17			

Reserves

27	M. Avery 246 Greeba
28	T. Hutton 250 Sheene Bultaco
29	P. Wootten 246 Yamaha
30	B. J. Veal 247 Crooks Suzuki

Grid Positions	1	7	12	19	
	2	8	14	20	
	3	9	15	21	24
	4	10	16	22	25
	5	11	17	23	26
	6		18		

Fastest Lap No. .... Time. .... Speed. .... mph

Finish Order	1st	2nd	3rd	4th	5th	6th
Time Speed						

28

# Event 2

2.00 pm

Ten-lap race for Production Sports Machines over 350 and not over 1,000 cc

Number Plates: Red Plate/White Numbers

Riding No. Rider, cc Machine, Grid Pos.

1	R. Pickrell 745 Dunstall	1	19	K. G. Buckmaster	
2	D. L. Croxford			649 Triumph T120	16
	745 Norton Commando	2	20	A. B. Monnery 649 Triumph T120	17
3	M. Andrew 745 Norton Commando	3	21	J. Allen 649 Triumph T120	20
4	C. W. Sanby 650 Triumph T120	4	22	C. P. Wall 654 BSA Spitfire	
5	J. Blanchard			(1st Reserve)	
	750 Norton Commando	5	23	A. R. Smith 654 BSA Spitfire	
6	A. M. Godfrey 500 Norton 88SS	11		(3rd Reserve)	
7	D. F. Degens 649 Triumph T120	9	24	P. Wyncoll 745 Dunstall	22
8	P. A. Butler 649 Triumph T120	6	25	B. E. Rodwell 750 Norton Atlas	18
9	D. J. Nixon 500 Triumph T100T	12	26	D. E. V. Clark 499 Velocette Thr.	23
10	M. Ashwood 650 Triumph T120	7	28	J. Bassindale 650 Triumph T120	24
11	P. A. Smart 745 Norton Commando	8	29	T. Odlin 650 Triumph T120	25
14	L. W. Phelps 650 Triumph T120	10	30	D. G. Simpson 600 Norton 99SS	
15	G. W. Sharp 650 Triumph T120	14		(1st Reserve)	
16	R. L. Faulks 650 Triumph T120	21	31	J. D. Allen 650 Triumph T120	
17	G. Carter 649 Triumph T120	15		(2nd Reserve)	
18	H. A. Robertson				

490 Triumph T100T 19

Fastest Lap No. .... Time. .... Speed. .... mph

Finish Order	1st	2nd	3rd	4th	5th	6th
Time Speed						

29



# Event 3

2.20 pm

Six-lap race for Solos over 350 and not over 1,000 cc

Number Plates: Blue Plate/White Numbers

Riding No. Rider, cc Machine, Grid Pos.

70	C. L. Holt 750 Metro Norton	1	86	T. J. McGonigle 650 Petter Spl	18
71	M. J. Lee 650 Triton	2	87	W. Cooke 650 Norton	19
72	W. Hodgkins 600 Norton	3	88	B. P. Gaites 745 Norton	20
73	R. E. Downing 499 Norton	4	89	S. J. Bowers 649 Triton	21
74	J. Kanka 650 Triumph	5	90	M. Kenny 746 Dunstall Metisse	22
75	M. J. Aslett 649 Triumph Metisse	6	91	R. D. Kemp 649 Triumph Norton	23
76	R. Allen 650 Triumph Matchless	7	92	P. Gibson 496 Matchless	24
77	D. C. House 750 Norton	8	93	B. Westall 650 Foxbury Spl	25
78	D. J. Habel 499 Petty Norton	9	94	B. Denniss 497 Matchless	26
79	J. H. L. Sadler 600 SE Special	10	Reserves		
80	B. Walker 650 Metisse	11	95	D. J. Page 499 Norton	
81	G. Carter 650 Deeprose	12	96	J. Lavendar 498 Triumph Norton	
82	J. Rodgers 650 Kashdan Metisse	14	97	J. Green 650 Triton	
83	M. H. Jebson 649 Triumph Norton	15	98	V. Young 650 Triton	
84	C. P. Reeves 650 Triumph Norton	16			
85	B. J. Wackett 998 Eglil Vincent	17			

Grid Positions	1	7	12	19	
	2	8	14	20	
	3	9	15	21	
	4	10	16	22	24
	5	11	17	23	25
	6		18		26

Fastest Lap No..... Time..... Speed.....mph

Finish Order	1st	2nd	3rd	4th	5th	6th
Time Speed						

30

# Event 4

2.35 pm

Six-lap race for Sidecars over 350 and not over 1,300 cc

Number Plates: Black Plate/White Numbers

Riding No. Rider, cc Machine, Grid Pos.

1	F. Barwick 998 NSU	14	8	I. Evans 875 Imp Spl	25
Pass: R. Wright			Pass: J. Mathuson		
2	M. G. Fiddaman 650 MGF Kitten	22	9	G. W. O'Dell 650 Triumph	8
Pass: J. T. Fiddaman			Pass: A. J. Gosling		
3	D. Plummer 650 Kettle Triumph	16	10	R. F. G. Powell 650 Triumph	18
Pass: M. Brett			Pass: R. C. Janes		
4	A. Sansum 649 Quaife Triumph	2	11	S. J. Downes 650 Triumph	20
Pass: A. MacFadzean			Pass: J. O. Harris		
5	D. Comley 648 ETY Triumph	4	Reserves		
Pass: C. M. Nickels					
6	P. J. Hardcastle 649 Chuck Triumph	6	12	A. MacEwan 650 Triumph	
Pass: T. Halliday			Pass: J. Pleasants		
7	A. Teasdale 725 RGM Triumph	10	14	T. Weedy 750 Norton	
Pass: N. A. Boret			Pass: D. Rickman		

Fastest Lap No..... Time..... Speed.....mph

Finish Order	1st	2nd	3rd	4th	5th	6th
Time Speed						

31

# Event 5

2.50 pm

Six-lap race for Solos over 175 and not over 250 cc

Number Plates: Green Plate/White Numbers

Riding No. Rider, cc Machine, Grid Pos.

41	J. J. Roberts 246 Greeves	1	57	C. Hope 247 Suzuki	18
42	J. C. Evans 248 Montesa	2	58	J. Adkin 200 Triumph	19
43	T. Anthony 250 Greeves	3	59	P. J. Burton 249 Yamaha	20
44	M. I. Jorgensen 247 Honda	4	60	R. A. Bridley 248 DMW	21
45	G. R. Jorgensen 246 Yamaha	5	61	D. J. Freestone 248 Ducati	22
46	J. R. Elsdon 250 Greeves	6	62	C. Belcher 246 Greeves	23
47	D. Holbrook 248 Aermacchi	7	63	C. Adley 246 Greeves	24
48	P. J. Parfitt 246 Yamaha	8	64	R. Guyver 247 Cotton	25
49	M. H. Taylor 250 Royal Enfield	9	65	G. Thomas 250 Aermacchi	26
50	R. A. Hill 244 Bultaco	10			
51	L. S. Griffin 247 DMW	11			
52	I. Thompson 249 NSU	12			
53	D. Lunn 247 Suzuki	14			
54	T. J. McGonigle 244 Bultaco	15			
55	D. J. Taylor 250 Greeves	16			
56	P. F. Smiley 248 Ducati	17			

Reserves

66	G. C. Young 246 Royal Enfield
67	P. R. Sayers 247 Greeves
68	B. A. Denniss 250 Kawasaki
69	R. J. Brown 249 Ariel

Grid Positions	1	7	12	19	
	2	8	14	20	
	3	9	15	21	24
	4	10	16	22	25
	5	11	17	23	26
	6		18		

Fastest Lap No. .... Time ..... Speed ..... mph

Finish Order	1st	2nd	3rd	4th	5th	6th
Time Speed						

# Event 6

3.10 pm

Six-lap race for Solos over 250 and not over 350 cc

Number Plates: Blue Plate/White Numbers

Riding No. Rider, cc Machine, Grid Pos.

31	S. Morrell 348 Norton	9	45	W. Munn 340 Honda	19
32	D. G. L. Lee 349 DGL	10	46	R. J. Biscardine 349 AJS	6
33	D. R. Evans 349 AJS	11	47	T. C. Elliott 344 Greeves	5
34	J. M. O'Brien 350 Norton	8	48	S. Eldridge 348 Kettle Norton	20
35	R. I. Bentley 344 Aermacchi	25	49	T. Jackson 349 Norton BSA	21
36	D. Guilfoyle 349 Triumph	26	50	J. Sparham 350 AJS	22
37	B. Judd 350 Bultaco	12	51	T. Sparrow 349 Norton	23
38	B. E. Rodwell 344 Aermacchi	7	52	L. W. Phelps 311 Kawasaki	2
39	J. H. Jordan 348 Honda	14	53	P. Newman 344 Aermacchi	3
40	I. Thompson 390 NSU	16	54	J. H. Oldfield 349 AJS	24
41	A. S. Fryer 348 Norton	15	55	W. A. Roberts 348 Norton	4
42	K. A. Lindsay 349 AJS	17			
43	M. Jeavons 347 Honda	18			
44	B. Ditchburn				

Reserves

56	A. Brooker 350 AJS
57	T. Baker 350 Honda

348 Aermacchi Metisse 1

Fastest Lap No. .... Time ..... Speed ..... mph

Finish Order	1st	2nd	3rd	4th	5th	6th
Time Speed						

## Event 7




3.25 pm

### Six-lap race for Solos over 350 and not over 1,000 cc

Number Plates : Yellow Plate/Black Numbers

*Riding No. Rider, cc Machine, Grid Pos.*

41 R. W. Corbett 649 Norton	3	57 B. J. Bartlett 499 Norton	19
42 C. Neve 496 Matchless	9	58 D. Hall 650 Triumph Metisse	12
43 D. Filler 748 Norton	2	59 L. S. Capon 998 Vincent	21
44 L. W. Phelps 650 Triumph	8	60 M. Steward 650 Triumph Norton	22
45 W. Day 650 BMF Metisse	16	61 B. A. Cutting 650 Norton	23
46 C. P. Wall 654 BSA	11	62 D. F. White 650 Triumph Norton	24
47 W. J. Dow 750 Norton	1	63 D. J. Tomkins 600 Norton	25
48 A. J. Oswin 500 BSA	17	64 D. G. Potter 750 Norton	26
49 H. M. Robinson 650 Triumph	5	65 C. T. Curtis 650 Norton	20
50 A. E. Rogers 650 Alcon Norton	6		
51 K. G. Hampton 733 Norton Triumph 4	4		
52 B. E. Rodwell 649 Dresda	7	Reserves	
53 K. G. Buckmaster 649 Triumph	15	66 T. Gardiner 500 Norton	
54 P. A. Noke 496 Matchless	14	67 J. D. Allen 650 Triumph	
55 B. J. Timson 649 Triumph Norton 10	10	68 R. L. Sibley 668 Triton	
56 J. W. Jones 706 RPM Triumph	18	69 M. E. Sears 650 Norton	

Grid Positions		1	7	12	19	
		2	8	14	20	
		3	9	15	21	
		4	10	16	22	24
		5	11	17	23	25
		6		18		26

Fastest Lap No..... Time..... Speed.....mph

Finish Order	1st	2nd	3rd	4th	5th	6th
Time Speed						

## Event 8

## 500 Castrol British National Road Race Championship

3.40 pm

### Fifteen-lap race for Solos over 350 and not over 500 cc

Number Plates : Yellow Plate/Black Numbers

*Riding No. Rider, cc Machine, Grid Pos.*

1	R. Pickrell 497 Dunstall	4	15	V. A. Chivers 499 Norton	11
2	D. L. Croxford 496 Kuhn Seeley	1	16	I. Ratcliffe 496 Seeley	16
3	R. Chandler 498 Seeley	5	17	B. M. Smith 499 Norton	23
4	A. J. Barnett 496 Kirby Metisse	2	18	N. Hunter 490 Tricati	20
5	P. A. Smart 496 Francis Seeley	6	19	A. J. Harvey 497 Norton	21
6	M. Andrew 496 Seeley	3	20	J. R. Pepper 498 Norton	24
7	C. W. Sanby 496 Matchless	7	21	N. Barry 500 Velocette	22
8	R. E. Butcher 500 Oakley Quaiife	8	22	G. W. Sharp 500 Norton	12
9	J. Blanchard 496 Chuck Seeley	9	23	D. J. Page 499 Norton	17
10	M. Ashwood 496 Ater Matchless	10	24	G. C. Young 499 Norton	18
11	A. M. Godfrey 499 Norton	15	25	P. K. Davies 499 Norton	19
12	N. C. G. Morgan 499 Norton	14	26	G. Duxbury 496 Triton	26
13	P. Humber 498 Konia	25			

Fastest Lap No..... Time..... Speed.....mph

Finish Order	1st	2nd	3rd	4th	5th	6th
Time Speed						

# Event 9

4.10 pm

Six-lap race for Sidecars over 350 and not over 1,300 cc

Number Plates: Black Plate/White Numbers

Riding No. Rider, cc Machine, Grid Pos.

15 E. L. Vant 649 Triumph Pass: R. D. Moore	2	22 L. Langridge 725 RGM Triumph Pass: N. Bullen	18
16 J. Douglas 649 DB Triumph Pass: G. Bailey	4	23 A. V. Butler 650 Lynx Pass: I. Burton	20
17 R. Munns 500 ACS Triumph Pass: D. Stevens	6	24 A. Wright 650 Triumph Pass: A. Poole	22
18 B. J. Gray 650 MGF Kitten Pass: J. Robinson	8	25 R. Cass 650 Triumph Pass: D. Jose	25
19 P. James 650 Triumph Pass: T. R. Barton	10	Reserves	
20 F. Kateley 650 Stanley Norton Pass: V. Sampson	14	26 R. Wilson 650 Triumph Pass: M. Cole	
21 J. F. Tress 650 Triumph Pass: A. C. Clark	16	27 T. Woodcock 600 BSA Pass: Mrs. J. Woodcock	

Grid Positions	1	7	12	19	
	2	8	14	20	
	3	9	15	21	24
	4	10	16	22	25
	5	11	17	23	26
	6		18		

Fastest Lap No. .... Time ..... Speed ..... mph

Finish Order	1st	2nd	3rd	4th	5th	6th
Time Speed						

# Event 10

350 Championship Race for the Castrol British National Championship

4.25 pm

Twelve-lap race for Solos over 250 and not over 350 cc

Number Plates: Blue Plate/White Numbers

Riding No. Rider, cc Machine, Grid Pos.

1 R. Pickrell 344 Aermacchi	9	14 M. Carney	
2 D. L. Croxford 348 Kuhn Seeley	6	349 Shepherd Kawasaki	4
3 R. Chandler 348 Seeley	8	15 J. F. Ringwood 348 Broad Yamaha	15
4 A. J. Barnett 349 Kirby Metisse	3	16 D. Filler 349 Norton	20
5 J. R. Taylor 344 Aermacchi	19	17 D. F. Degens 350 Ducati	18
6 M. Andrew 348 Kuhn Seeley	5	18 G. W. Sharp 350 Aermacchi	22
7 C. W. Sanby 349 AJS	14	19 C. Offer 348 Yamaha	12
8 R. E. Butcher 350 Oakley Quaife	10	20 P. M. Mahoney	
9 J. Blanchard 348 Chuck Seeley	16	346 Herring Yamaha	2
10 M. Ashwood 348 Norton	17	21 B. J. Holmes 348 Norton	21
11 A. M. Godfrey 350 Yamaha	11	22 G. Jones 350 Norton	23
12 T. P. Grotefeld 348 Padgett Yamaha	7	23 J. C. Lancaster 344 Aermacchi	1
		24 G. Garraway 254 Suzuki	25

Fastest Lap No. .... Time ..... Speed ..... mph

Finish Order	1st	2nd	3rd	4th	5th	6th
Time Speed						

# Event 11

4.40 pm

Six-lap race for Sidecars over 350 and not over 1,300 cc

Number Plates: Black Plate/White Numbers

Riding No. Rider, cc Machine, Grid Pos.

28	P. H. Finch 650 Triumph Pass: R. W. Symes	2	35	S. Digby 646 BSA Pass: B. Haddrell	8
29	J. Swain 650 Dresda Pass: D. Coomber	10	36	A. Moss 650 Triumph Pass: R. English	20
30	M. Potter 650 Triumph Pass: T. J. Fiddaman	6	37	J. Barker 650 Triumph Pass: C. Emmins	22
31	C. Carter 650 Triumph Pass: D. Leigh	14	38	D. H. Young 654 Mini Spl Pass: R. G. Mills	25
32	B. Offen 650 Triumph Pass: J. Dysart	4	Reserves		
33	D. Camus 650 Triumph Pass: F. Ruel	16	39	W. T. Mumford 750 Norton Pass: J. J. Mumford	
34	C. Swann 650 MGF Kitten Pass: S. Orth	18	40	E. Lloyd 650 Triumph Pass: T. Harrington	

Grid Positions	1	7	12	19	
	2	8	14	20	
	3	9	15	21	
	4	10	16	22	24
	5	11	17	23	25
	6		18		26

Fastest Lap No..... Time..... Speed.....mph

Finish Order	1st	2nd	3rd	4th	5th	6th
Time Speed						

38

# Event 12

4.55 pm

Fifteen-lap race for Solos over 350 and not over 1,000 cc

Number Plates: Yellow Plate/Black Numbers

Riding No. Rider, cc Machine, Grid Pos.

1	R. Pickrell 745 Dunstall	1	15	V. A. Chivers 499 Norton	21
2	D. L. Croxford 496 Kuhn Seeley	2	16	I. Ratcliffe 750 Rogan Metisse	23
3	R. Chandler 498 Seeley	3	17	B. M. Smith 499 Norton	24
4	A. J. Barnett 496 Kirby Metisse	4	18	N. Hunter 490 Tricati	25
5	P. A. Smart 745 Francis Norton	5	19	A. J. Harvey 497 Norton	18
6	M. Andrew 745 Kuhn Commando	6	20	J. R. Pepper 498 Norton	26
7	C. W. Sanby 750 Kuhn Commando	7	21	N. Barry 500 Velocette	15
8	R. E. Butcher 500 Oakley Quaife	8	31	P. A. Butler 650 Boyer Triumph	16
9	J. Blanchard 496 Chuck Seeley	9	32	D. J. Nixon 750 Triumph	19
10	M. Ashwood 496 Arter Matchless	10	33	B. Ditchburn 650 Triton	20
11	A. M. Godfrey 499 Norton	11	34	D. F. Degens 650 Dresda	14
12	N. C. G. Morgan 499 Norton	12	35	P. M. Mahoney 750 Curley Norton	12
14	P. Humber 498 Konig	22			

39 RS  
8th

Fastest Lap No..... Time..... Speed.....mph

Finish Order	1st	2nd	3rd	4th	5th	6th
Time Speed						

39



# Event 13

5.25 pm

**Ten-lap race for Production Sports Machines over 350 and not over 1,000 cc**

Number Plates: Red Plate/White Numbers

Riding No. Rider, cc Machine, Grid Pos.

1 R. Pickrell 745 Dunstall	1	19 K. G. Buckmaster	16
2 D. L. Croxford	2	20 A. B. Monnery 649 Triumph T120	17
3 M. Andrew 745 Norton Commando	3	21 J. Allen 649 Triumph T120	20
4 C. W. Sanby 650 Triumph T120	4	22 C. P. Wall 654 BSA Spitfire	
5 J. Blanchard	5	(2nd Reserve)	
6 A. M. Godfrey 500 Norton 88SS	11	23 A. R. Smith 654 BSA Spitfire	
7 D. F. Degens 649 Triumph T120	9	(1st Reserve)	
8 P. A. Butler 649 Triumph T120	6	24 P. Wyncoll 745 Dunstall	22
9 D. J. Nixon 500 Triumph T100T	12	28 J. Bassindale 650 Triumph T120	
10 M. Ashwood 650 Triumph T120	7	(3rd Reserve)	
11 P. A. Smart 745 Norton Commando	8	32 J. Kanka 650 Triumph T120	18
14 L. W. Phelps 650 Triumph T120	10	33 G. Falcke 500 Triumph T120	23
15 G. W. Sharp 650 Triumph T120	14	34 R. Rudling 490 Triumph T100T	24
16 R. L. Faulks 650 Triumph T120	21	35 G. F. Green 500 Triumph T100T	25
17 G. Carter 649 Triumph T120	15	36 P. Hammarling	
18 H. A. Robertson		500 Triumph T100T	26
		38 R. Harrington	
		(4th Reserve) 500 Triumph T100T	

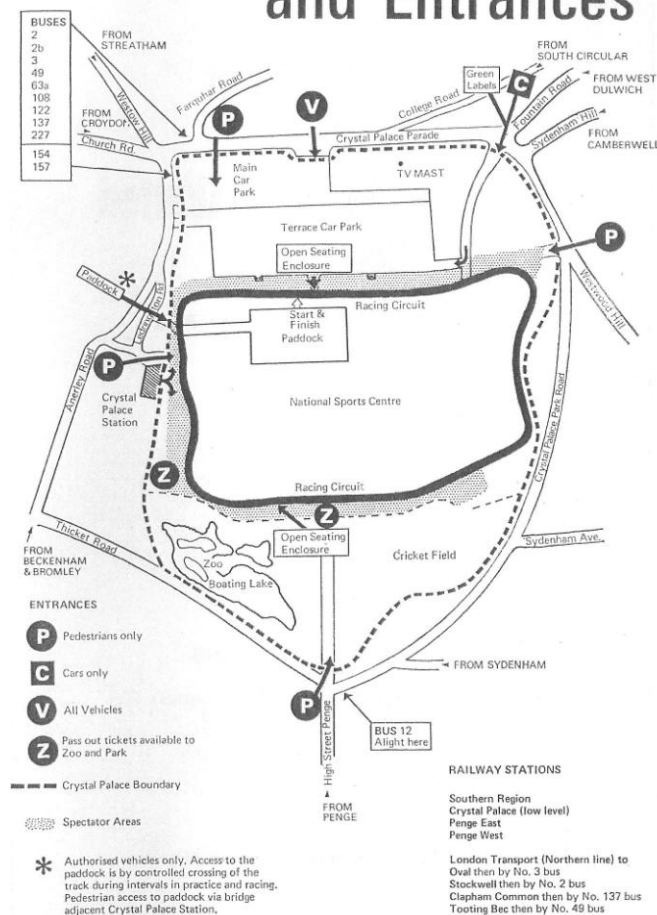
Grid Positions	1	7	12	19	
	2	8	14	20	
	3	9	15	21	24
	4	10	16	22	25
	5	11	17	23	26
	6		18		

Fastest Lap No. .... Time. .... Speed. .... mph

Finish Order	1st	2nd	3rd	4th	5th	6th
Time						
Speed						

40

## Travel Facilities and Entrances



Designed by GLC Supplies Dept. (Printing and Graphic Design Division)  
Printed by Oxley and Son (Windsor) Ltd., 2/4 Victoria Street, Windsor (29725) (M19932) 5/69

**Crystal Palace**  
**Saturday 13 September**

**British Road Services Limited**  
**Trophy Meeting**

**British Road Services Limited Trophy Race**  
**for Special GT Cars**  
in two 20-lap parts

**South London Press Trophy Races**  
**for Saloon Cars**

**Reg Parnell Trophy Race for**  
**Formula 3 Cars**  
in two 15-lap parts

**NATIONAL BRITISH RACE MEETING**  
organised by  
**BRITISH AUTOMOBILE RACING CLUB**

Rovers (including admission to seating enclosures) 10/-  
Paddock 10/-  
Children 2/6

**CAR PARKING FREE**



BARC  
Sutherland House, 5-6 Argyll St, London, W1  
01-437 2533

