



Easter Monday Crystal Palace

National Motor Cycle Meeting 30 March 1970

Organised by SE Centre ACU for Greater London Council

Official Programme 2/6

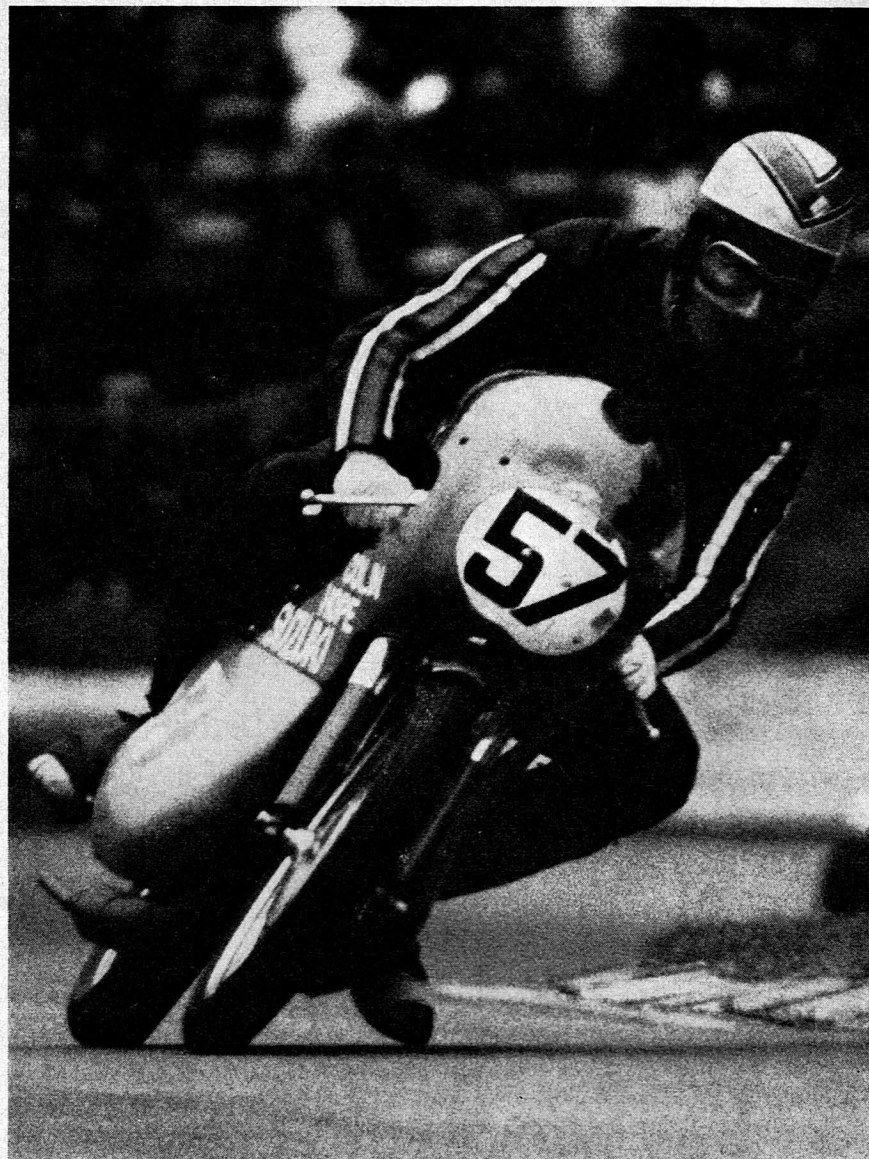


**Motor
Cycle**

Moves in the best circuits

EVERY WEDNESDAY

Colin Hope, Suzuki, breasting Maxim Rise



Today's Racing

National Road Race Meeting for Motor Bicycles (Solos) and Motor Cycles with Sidecars.

The Meeting is held under the General Competition Rules of the ACU together with the Supplementary Regulations of the South-Eastern Centre Auto-Cycle Union.
Permit No. ACU 166.
PCL No. 6.

Contents

- 1 Today's Racing
- 2 Officials
- 3 Programme
- 3 Awards
- 4 Palace Portrait
- 6 Lap Records
- 7 Lap Speed Table
- 9 Palace '69
- 14 Flag Signals
- 14 Acknowledgements
Crystal Palace '70
(coloured inset)
- 16 Map of Circuit
- 18 Race 1
- 19 Race 2
- 20 Race 3
- 21 Race 4
- 22 Race 5
- 23 Race 6
- 24 Race 7
- 25 Race 8
- 26 Race 9
- 27 Race 10
- 28 Race 11
- Travel Guide
(inside back cover)

Star names abound in the entry list for today's racing, and the keen competition is likely to produce another crop of lap and race records to match last year's Easter Monday speed feast.

For Charles Mortimer, featured in today's Palace Portrait, it will be a hectic afternoon. He will be on the track four times and his only regret is that his father has sold the vintage Rudge-Whitworth which could have provided him with an opportunity for a fifth outing!

Japanese machines dominate the 250 cc event and the three 'likely-lads'—Paul Smart, Terry Grotefeld and Charles Mortimer, are all Yamaha mounted. One of this talented trio is likely to take the honours but being so evenly matched it is impossible to forecast the individual winner. There are several others in the race who could provide an upset, among them Alan Pinnock who reached peak form at the end of last season.

Changing to their bigger Yamahas, Mortimer, Smart and Grotefeld will be facing stiff opposition in the 350 cc race. Ranged against them will be Martin Carney on a Kawasaki, while the four stroke contingent will be spearheaded by Alan Barnett, Rex Butcher, John Blanchard and Charlie Sanby.

These stars will clash again in the race for machines up to 500 cc, but the four stroke men will have switched to their bigger machines and it will be interesting to see if the lighter two strokes can match the heavy but more powerful machines around this testing circuit.

Ray Pickrell will be out on Paul Dunstall's 745 cc Norton engine machine, while

Today's Racing (continued)

The Racing Programme is organised by the South Eastern Centre of the Auto-Cycle Union.

Officials

Stewards of the Meeting
ACU: G. R. Allan
SE Centre: W. H. Green
A. Anastasio

Judge
D. McNeally

Scrutineer
W. F. Beckett

Timekeepers
H. W. Shuttleworth
(International) in charge

Starter
J. Walby

Announcer
A. Robinson

Chief Marshal
K. Phillips

Clerk of the Course
W. T. Bult

Chief Medical Officer
Dr. J. R. K. Butchey,
M.B., B.S.(Lond.)

Secretary of the Meeting
B. S. Bonny,
c/o 75 Tilehurst Road,
London S.W.18

Assistant Secretary of the Meeting

E. J. Sawtell

Press Officer
Basil Andrew
GLC Press Office

Circuit Manager
Allan Tyler
GLC Parks Dept.

Charlie Sanby will be battling for the rival Gus Kuhn-Shell team on a Kuhn-Seeley also with a Norton engine. Consistent top performer at Crystal Palace, Martyn Ashwood will be on a Rickman Metisse. In among the thunder of high performance four stroke motors will be the screaming Kawasaki of Martin Carney. So many potential winners will face the starter that completing a winning Pools coupon must be easier than guessing 1, 2 and 3 in this race.

Tom Kirby is renowned for talent spotting, and riding one of his machines with the famous number nine in Event 4 is Jim Harvey from Colchester. This young rider could be a future star under Tom's expert guidance.

If solo predictions are difficult, then the sidecar class is impossible! Peter Brown and Mick Boddice on their 650 BSA outfits must be considered favourites, but there are several Palace regulars who could roar home first. Among them is Jack Trustham who will be pinning his hopes on his 1000 cc Vincent outfit, while fast improving Steve Downes is Triumph mounted. Technical innovation is always a feature of this class and among those to look for is the Imp engined outfit of Ian Evans and the revamped 'Unorfordox' with its Dagenham built engine driven by Jack Levy.

It looks as if Chris Williams will continue on his all conquering way with his 1926 Scott in the Vintage race, which concludes this meeting organised by the South Eastern Centre of the Auto Cycle Union. Second in the race last year was Willy Wilshire on a Rudge. Willy, whose only concession to advancing years is to accept the services of a pusher when starting, reveals that the Rudge was born in 1930, but he refuses to disclose his own Vintage!

Programme

Awards

Event One

1st £25, 2nd £15, 3rd £10,
4th £8, 5th £5, 6th £3,
7th £2, 8th £1.

Event Two

1st £25, 2nd £15, 3rd £10,
4th £8, 5th £5, 6th £3,
7th £2, 8th £1.

Event Three

1st £40, 2nd £30, 3rd £20,
4th £10, 5th £7, 6th £6,
7th £5, 8th £2.

Event Four

1st £12, 2nd £10, 3rd £8,
4th £6, 5th £4, 6th £2,
7th £1.

Event Five

1st £30, 2nd £20, 3rd £15,
4th £10, 5th £7, 6th £6,
7th £5, 8th £2.

Event Six

1st £40, 2nd £30, 3rd £25,
4th £15, 5th £10, 6th £5.
£15 to the driver of the
first machine not exceeding
500 cc to finish in the
Final. £10 to the second
machine not exceeding
500 cc to finish in the Final.
Event Six Heats:
1st £8, 2nd £5, 3rd £3.

Event Seven

1st £10, 2nd £5, 3rd £3,
4th, £2, 5th £1.

1.30 pm Race 1 Event Six First Five-lap Heat for Racing Sidecars up to 1300 cc

1.45 pm Race 2 Event One Eight-lap Race for Solo Racing Motor Cycles over 125 cc and not over 250 cc

2.00 pm Race 3 Event Six Second Five-lap Heat for Racing Sidecars up to 1300 cc

2.15 pm Race 4 Event Two Ten-lap Race for Solo Racing Motor Cycles over 250 cc and not over 350 cc

2.35 pm Race 5 Event Six Third Five-lap Heat for Racing Sidecars up to 1300 cc

2.50 pm Race 6 Event Five Ten-lap Race for Solo Racing Motor Cycles over 340 cc and not over 500 cc

3.15 pm Race 7 Event Six Fourth Five-lap Heat for Racing Sidecars up to 1300 cc

3.30 pm Race 8 Event Four Eight-lap Race for Solo Racing Motor Cycles over 175 cc and not over 1000 cc

3.40 pm Interval

4.10 pm Race 9 Event Three Ten-lap Race for Solo Racing Motor Cycles over 175 cc and not over 1000 cc

4.30 pm Race 10 Event Six Ten-lap Final for Racing Sidecars up to 1300 cc

4.50 pm Race 11 Event Seven Eight-lap Race for Racing Vintage and Post Vintage Motor Cycles from 251 cc to 750 cc

Palace Portrait

Charles Mortimer

When your father was a world record holder with Eric Fernihough in 1935, and four years later entering the records again with the world's fastest 350 cc sidecar over the Standing Start mile and kilometre distances, and your mother raced cars, then it's hardly surprising that your school days are filled with thoughts of following in the family footsteps!

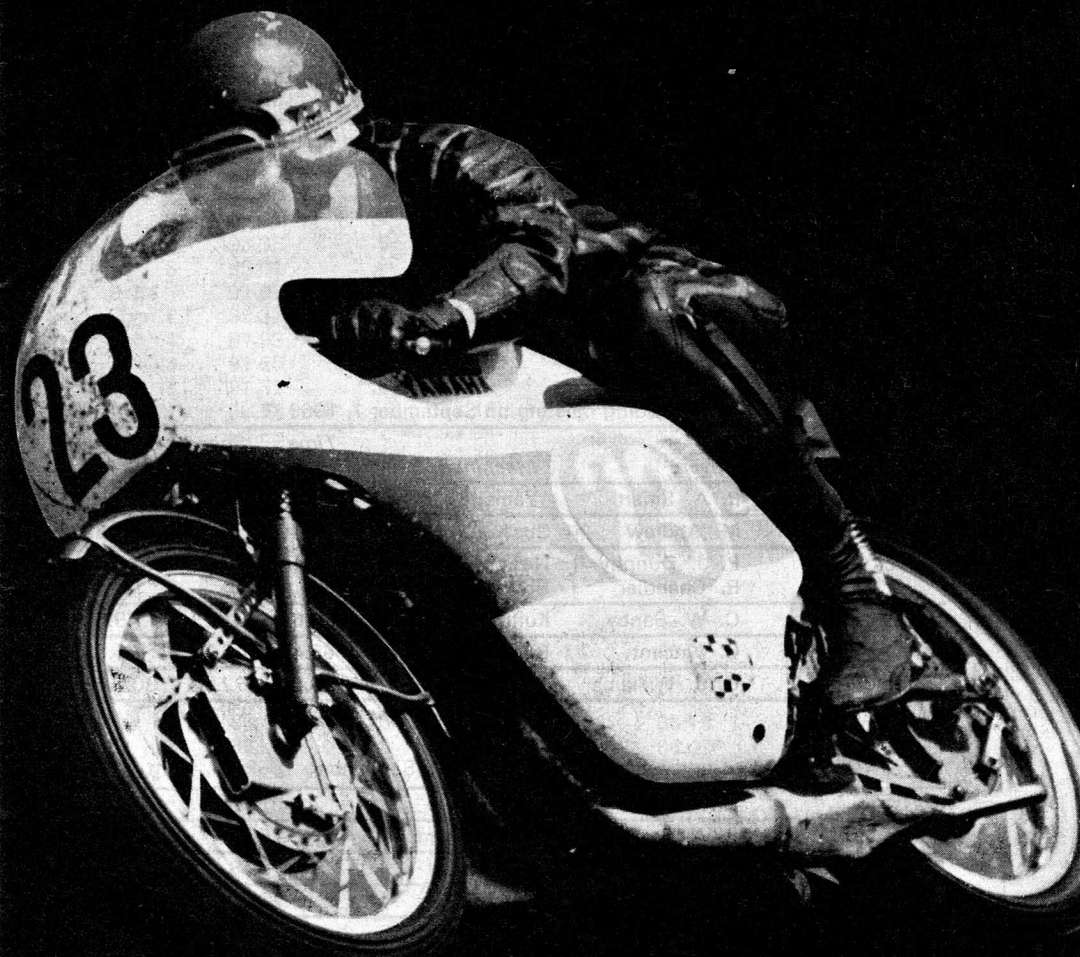
Charles Mortimer had no doubts that he would become a motor cycle racer. After his stay at Eton had ended he joined his father as director of a motor cycle racing training school.

Charles became a star pupil at his own school, and had his first race at Brands soon after his sixteenth birthday, and finished fourth on a Greeves. On a similar machine he won a Silver Replica in the Manx Grand Prix a year later.

The first race victory came soon after, and further successes quickly followed. The Greeves gave way to a 125 Bultaco, and on this he became British 125 cc champion. Charles was not content to enter only the small capacity classes. On a Norton, sponsored by Francis Beart, who also sponsored his father, he soon became a force to be reckoned with in events for bigger machines.

Tackling the world championship series and defending his British title made 1969 a hectic year. He staged a successful defence of the British championship and won points in the world championships. When travelling by ferry for the Finnish Grand Prix Charles met Marianne whom he married a few weeks ago. They plan to settle in Italy, not far from the Villa factory for whom Charles will ride in this year's classics.

Today Charles will be sponsored by Lord Denbigh and Philip Martyn.



Records and Lap Speed Table

Road Racing Circuit—Motor Cycles

Lap Records up to and including meeting on September 1, 1969

Class	Driver	Machine	Time (secs)	Speed (mph)	Date
250 cc solo	P. A. Smart	Yamaha	63.8	78.43	1.9.69
350 cc solo	M. Andrew	Gus Kuhn-Seeley 348	64.4	77.7	7.4.69
500 cc solo	P. J. Dunphy	Norton	62.4	80.19	5.8.63
	R. Chandler	Seeley			
1,000 cc solo	C. W. Sanby	Kuhn-Commando	61.6	81.23	1.9.69
Three-wheelers	C. Vincent	BSA Watsonian	65.4	76.51	7.4.69
Vintage	C. J. Williams	1926 Scott	69.0	72.52	30.8.65

Race Records up to and including meeting on 1 September, 1969

Class	Driver	Machine	Speed	Date
250 cc solo	P. A. Smart	247 Yamaha	75.06	1.9.69
350 cc solo	J. Blanchard	Norton	75.53	30.8.65
500 cc	R. Chandler	Seeley	78.17	1.9.69
1,000 cc solo	R. Pickrell	Dunstall 745	78.38	7.4.69
Three-wheelers	C. Vincent	BSA Watsonian	73.41	7.4.69
Vintage	C. J. Williams	1926 Scott	70.64	30.8.65

1 lap—1.39 miles

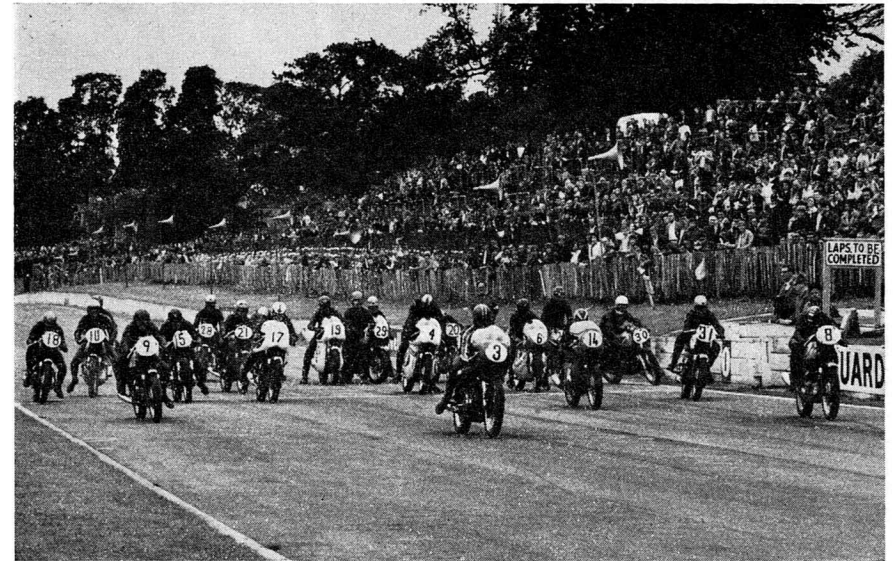
Lap Time m s	Speed mph	Lap Time m s	Speed mph	Lap Time m s	Speed mph	Lap Time m s	Speed mph
0 51	98.12	1 0	83.40	1 9	72.52	1 18	64.15
.2	97.73	.2	83.12	.2	72.31	.2	63.99
.4	97.35	.4	82.85	.4	72.10	.4	63.83
.6	96.98	.6	82.57	.6	71.90	.6	63.66
.8	96.60	.8	82.20	.8	71.69	.8	63.50
0 52	96.23	1 1	82.03	1 10	71.49	1 19	63.34
.2	95.86	.2	81.76	.2	71.28	.2	63.18
.4	95.50	.4	81.50	.4	71.08	.4	63.02
.6	95.13	.6	81.23	.6	70.88	.6	62.86
.8	94.77	.8	80.97	.8	70.68	.8	62.71
0 53	94.42	1 2	80.71	1 11	70.48	1 20	62.55
.2	94.06	.2	80.45	.2	70.28	.2	62.39
.4	93.71	.4	80.19	.4	70.08	.4	62.24
.6	93.36	.6	79.94	.6	69.89	.6	62.08
.8	93.01	.8	79.68	.8	69.69	.8	61.93
0 54	92.67	1 3	79.43	1 12	69.50	1 21	61.78
.2	92.32	.2	79.18	.2	69.31	.2	61.63
.4	91.99	.4	78.93	.4	69.12	.4	61.47
.6	91.65	.6	78.68	.6	68.93	.6	61.32
.8	91.31	.8	78.43	.8	68.74	.8	61.17
0 55	90.98	1 4	78.19	1 13	68.55	1 22	61.02
.2	90.65	.2	77.94	.2	68.36	.2	60.88
.4	90.32	.4	77.70	.4	68.17	.4	60.73
.6	90.00	.6	77.46	.6	67.99	.6	60.58
.8	89.68	.8	77.22	.8	67.80	.8	60.43
0 56	89.36	1 5	76.98	1 14	67.62	1 23	60.29
.2	89.04	.2	76.75	.2	67.44	.2	60.14
.4	88.72	.4	76.51	.4	67.26	.4	60.00
.6	88.41	.6	76.28	.6	67.08	.6	59.86
.8	88.10	.8	76.08	.8	66.90	.8	59.71
0 57	87.79	1 6	75.82	1 15	66.72	1 24	59.57
.2	87.48	.2	75.59	.2	66.54	.2	59.43
.4	87.18	.4	75.36	.4	66.37	.4	59.29
.6	86.88	.6	75.14	.6	66.19	.6	59.15
.8	86.57	.8	74.91	.8	66.02	.8	59.01
0 58	86.28	1 7	74.69	1 16	65.84	1 25	58.87
.2	85.98	.2	74.46	.2	65.67	.2	58.73
.4	85.68	.4	74.24	.4	65.50	.4	58.59
.6	85.39	.6	74.02	.6	65.33	.6	58.46
.8	85.10	.8	73.81	.8	65.16	.8	58.32
0 59	84.81	1 8	73.59	1 17	64.99	1 26	58.19
.2	84.53	.2	73.37	.2	64.82	.2	58.05
.4	84.24	.4	73.16	.4	64.65	.4	57.92
.6	83.96	.6	72.94	.6	64.48	.6	57.78
.8	83.68	.8	72.73	.8	64.32	.8	57.65

Palace '69

Photos: GLC Architects Dept., Photographic Unit

Top. They're off

Below. Munifords (WT & JJ) 750 Norton



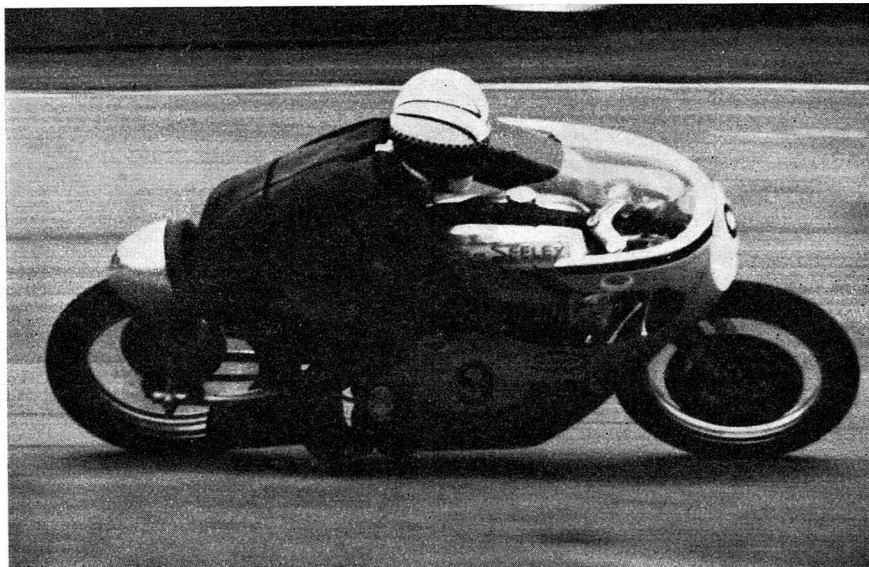
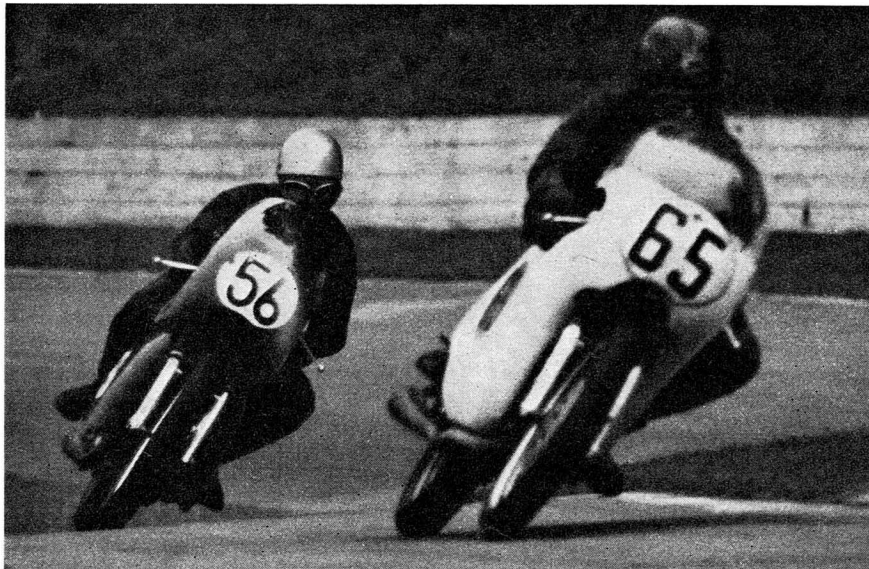
**Stop
watching
your oil**

Great performance
is guaranteed with GTX.
High protection,
low consumption.
GTX. The engine protector.

For a free lubrication chart or information sheet on your car, write to: Dept. MCM,
Castrol Limited, High Road, Cowley, Nr. Uxbridge, Middlesex.

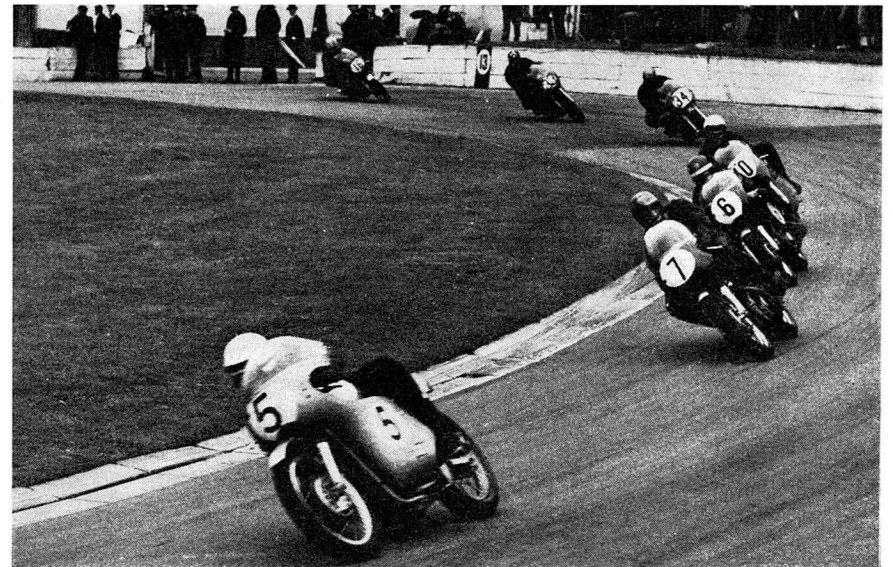
Top. J. W. Jones, 56 (706 RPM Triumph) follows C. T. Curtis, 65 (650 Norton) up Maxim Rise—August Bank Holiday Monday

Below. John Blanchard, Chuck Seeley



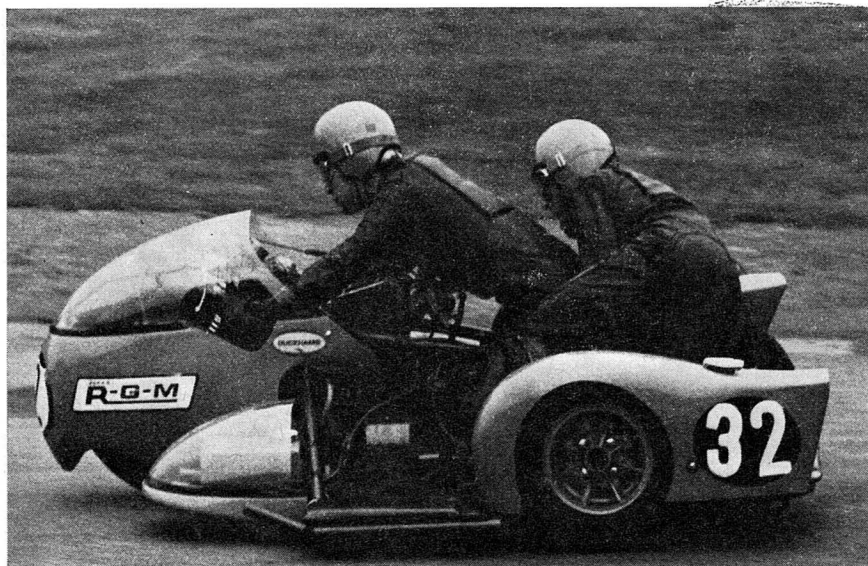
Top. John Ringwood 22 (MZ 125) on his way to victory and new race and lap records

Below. Paul Smart riding a Francis Norton leads the pack round South Tower Corner in the 1000 cc event at last year's September meeting. Smart finished second to Ron Chandler who set up a new lap record

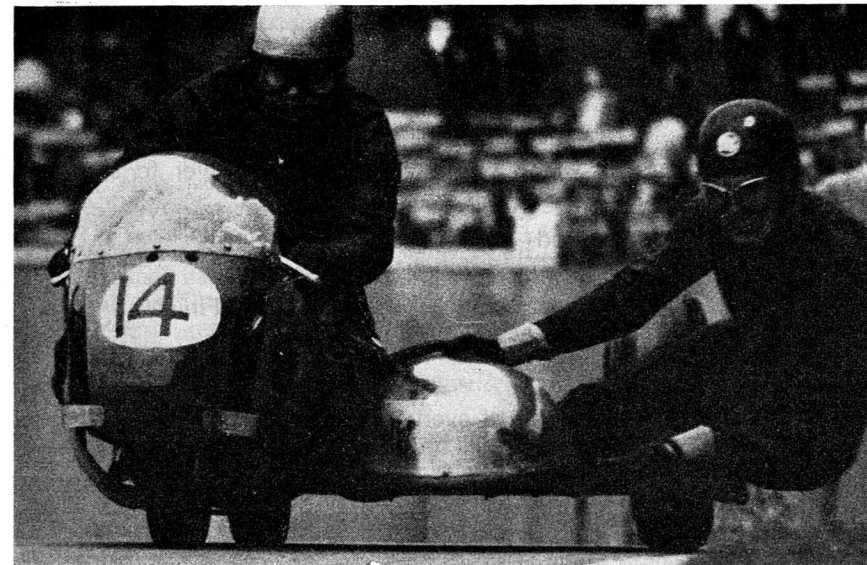


Top. R. Mathers and M. Cain (MGF Kitten) awaiting the start of the sidecar heat—Easter 1969

Below. B. Offew and his passenger J. Dysant in their 650 cc Triumph—August Bank Holiday Monday



Cornering



NOTICES

Warning to the Public. Motor Racing is Dangerous. It is a condition of admission that all persons having any connection with the promotion and/or organisation and/or conduct of the meeting, including the owners of the land and the drivers and owners of the vehicles and passengers in the vehicles, are absolved from all liability arising out of accidents causing damage or personal injury (whether fatal or otherwise) howsoever caused to spectators or ticket holders.

Dogs are not admitted in the interests of safety.

Programme Copyright. This programme, including the list of competitors and their racing numbers, is copyright.

The Greater London Council reserves the right to postpone, abandon, or cancel the race meeting or any part thereof.

The Promoters accept entries and driver nominations in good faith, but have no control over circumstances affecting non-starters. Every effort is made to adhere to the printed programme of competitors. The promoters, however, cannot accept responsibility for the failure of any rider or motor cycle to appear.

Paddock Tickets price 10s each, in addition to admission charge, can be obtained at the pay-box of the pedestrian bridge adjacent to Crystal Palace station. Only a limited number are available.

Flag Signals

The following signals will be given in today's races

National Flag—Start
Black (with number)—that driver to stop
Green—Course clear
Red—stop (all drivers)
Yellow—danger, drive slowly
Chequered Black and White—Finish

Racing Numbers

The number plate on the front of every machine will be white with black numbers. Side numbers will be as follows:
Solos 125 cc to 250 cc Green Plates with White Numbers
Solos 251 cc to 350 cc Blue Plates with White Numbers
Solos 351 cc to 1,000 cc Yellow Plates with Black Numbers
Sidecars: Black Plates with White Numbers

Advertising

Enquiries for advertising space should be made to GLC Supplies Department (Programme Advertisements), Room 95, County Hall, SE1 01-633 5000, Extensions 6465 or 6367.

Acknowledgements

All fire precautions and fire fighting services by Antifyre
Breakdown services by
S. G. Smith (Motors) Ltd., 13-17 East Dulwich Road, SE22.
Streamline Motor-Cycles, 525 Lordship Lane, SE22
Dees of Croydon Ltd., Brighton Road, South Croydon
First Aid Services by St John Ambulance Brigade
Duplicating and office equipment loaned and operated by Roneo Ltd.,
Littlers Close, Merton Abbey, SW19

Lost Property

Lost property should be handed to any uniformed keeper or any member of the staff wearing a lapel badge or an armband, or handed into the Crystal Palace Offices, Anerley Hill, SE19.

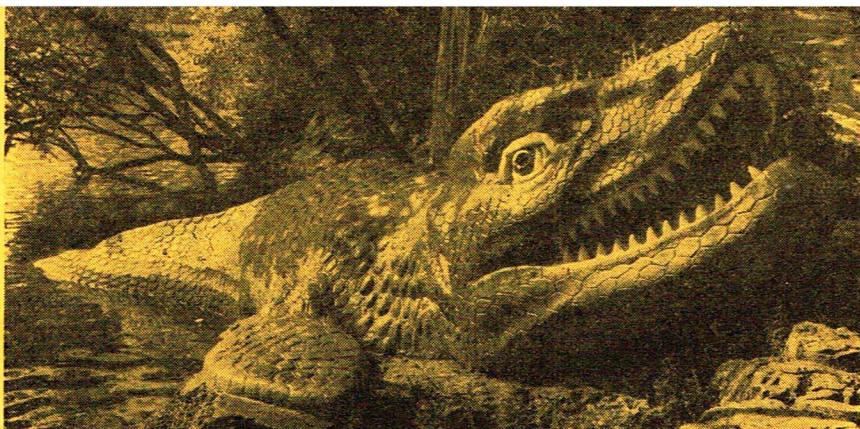
Enquiries about lost property should be made to the Park Superintendent's Office near the Penge entrance (Telephone 01-778 7148).

CRYSTAL PALACE '70

During Race Meetings **Pass out tickets** can be obtained at the Ramp Bend or Penge entrances for those wishing to take advantage of the following facilities in Crystal Palace Park.

Children's Zoo. There are many interesting birds and animals on display, some of which can be safely handled by children of all ages. The Zoo is open daily until the end of September, as follows: Monday to Friday (School term time) 1.30 pm—5.30 pm. School holidays, weekends and Bank Holidays 11 am to 6 pm. **Pony and Trap** and pony rides for children are available in a nearby enclosure.





A generous size **Sand Pit** for children to play in is also sited near to the Zoo and pony ride enclosure, with adjacent children's toilets.

The Play Park intended for children from 5 years up to school leaving age, is situated in the corner of the cricket field. Here children can freely take part in a variety of activities including climbing, playing on rope railways and balancing apparatus. A hut, especially useful in wet weather, provides facilities for painting, modelling, handicrafts and table tennis. Trained playleaders are in charge. The play park is open until the beginning of September.

The One O'clock club provides special facilities for the under fives. Mothers are quite free to play with their children or to rest but must remain in the area of the club while their children are there. Admission is free and any child under five may join in water and sand play, modelling, painting and drawing. A hut is available. The club is staffed by trained women play leaders and is open from 1 pm until 3.40 pm each weekday throughout the year.

Boating Rowing boats are available for hire in the lake at a charge of 4/- per hour.

Fishing Pike, perch, roach and bream as well as some other coarse fish can be caught in the boating lake. Daily tickets cost 1/6d. per day and 9d. for children under 16.

Catering A restaurant, situated between the lake and the Penge entrance, offers tea, coffee, minerals, light snacks and ice cream at reasonable prices.

And finally the **Crystal Palace Monsters**. These life-size models of prehistoric animals are sited on the island in the boating and fishing lake. They are well worth a visit before you leave.

The park is, of course, open every day for your enjoyment. Details of concerts, light music, and children's shows are given in "**Open Air Entertainment 1970**" obtainable price 1/- (postage and packing 6d.) from *The Chief Officer of the Parks Department, Cavell House, 2a Charing Cross Road, WC2*, W. H. Smith Bookstalls, or any GLC park.

Crystal Palace Motor Racing Circuit Calendar

3 May, Alvis 50th Anniversary Rally
Admission Free. Organised by Alvis OC

23 May Spring International practice
Admission 5s. or free to holders or purchasers of tickets for Monday 25 May. Accompanied children free.

25 May, Alcoa Britain International Trophy Meeting
Organised for GLC by British Automobile Racing Club
Adults 15s. Children 2s. 6d. Paddock transfer 20s. Enclosures 7s. 6d. and 6s.

7 June, RAC "L" Driver of the Year Finals
Admission Free. Organised by Institute of RAC Registered Instructors

13 June, Clubman's Motor Race Meeting
Promoted and organised by Thames Estuary Automobile Club
Rover tickets 10s. Children 2s. 6d. Paddock transfer 10s.

11 July, Aston Martin 50th Anniversary Rally
Admission free. Organised by Aston Martin OC

1 August, National Motor Cycle Race Meeting (Provisional only)
Promoted and organised by Racing 50 M.C.C.
Adults 7s. 6d. Children 2s. 6d. Enclosures 4s. 6d. and 3s. 6d.
Paddock transfer 10s.

16 August, Veteran Car Club Rally
Admission free. Organised by Veteran Car Club G.B. (London Section)

31 August, "Metropolitan" Motor Cycle Race Meeting
Organised for GLC by British Motor Cycle Racing Club

12 September, National British Motor Race Meeting
Promoted and organised by British Automobile Racing Club
Rover tickets 10s. Children 2s. 6d. Paddock transfer 10s.

3 October, Daily Express Formula 3 Trophy Meeting
Organised for GLC by British Racing and Sports Car Club
Rover tickets 10s. Children 2s. 6d. Paddock transfer 10s.

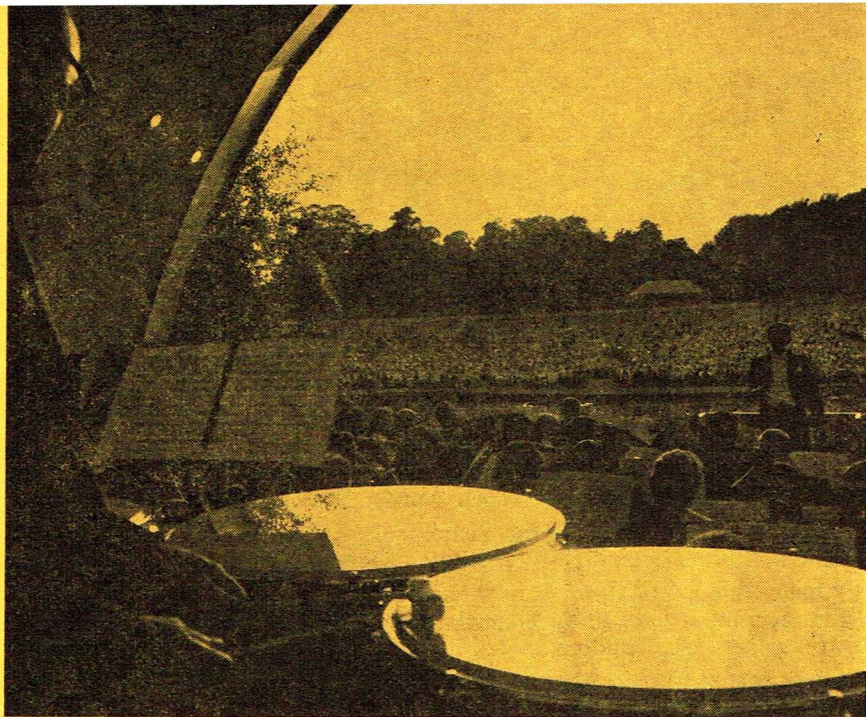
FREE PARKING at all Motor and Motor Cycle Race Meetings

Note

- (i) All details are correct at the time of publication.
- (ii) All rallies are held on the top straight of the motor racing circuit.
- (iii) Cycle racing takes place every Tuesday evening from 28 April until 25 August (except 28 July) and all day on Sundays 26 April, 17 and 31 May and 6 September.

Mailing List

If you would like to receive details of events on Crystal Palace Circuit in future seasons your name can be added to our mailing list if you phone 01-778 4691 or write to the Circuit Manager, Ref. EP/70, Crystal Palace Offices, Anerley Hill, London, SE19.



Crystal Palace Concert Bowl

For those musically inclined there is a series of open-air symphony concerts at 7.30 pm in the natural amphitheatre by the lake near North Tower Crescent.

These concerts, on Sunday evenings, are as follows:

- 28 June Sinfonia of London
Conductor Rudolf Schwarz
- 5 July Royal Liverpool Philharmonic Orchestra
Conductor Charles Groves
- 12 July Royal Philharmonic Orchestra
Conductor Arthur Davison
Guest Conductor Frank Wright
- 19 July Royal Liverpool Philharmonic Orchestra
Conductor Charles Groves

Deck chairs, numbered and reserved 6s, are bookable from GLC Parks Department, Cavell House, 2a Charing Cross Road, WC2 (Telephone 01-836 9882). 2,000 unreserved deck chairs at 6s are obtainable at the concert from 6.45 pm. Sitting on the grass costs 4s. There are also band concerts in the Park each Sunday afternoon during the summer.

Please write for full details of the symphony concerts at Crystal Palace Concert Bowl to the Information Office, GLC Parks Department, Cavell House, 2a Charing Cross Road, London, WC2 (Telephone 01-836 9882), or the Circuit Manager (Ref. EM/P70), Crystal Palace Offices, Anerley Hill, SE19 (Telephone 01-778 4691).



DUMPA DOLLY DAY



An important part of a two-wheeled enthusiast's creed is to pamper his dolly. Preferably she should have an hour-glass figure, be long legged, blond (gentlemen prefer them) and beautiful.

She should be prepared, at a minute's notice, to hop onto the pillion, and be whisked away to some far off race meeting — whether road, grass track, scramble or trial. But on Wednesday she will be dumped!

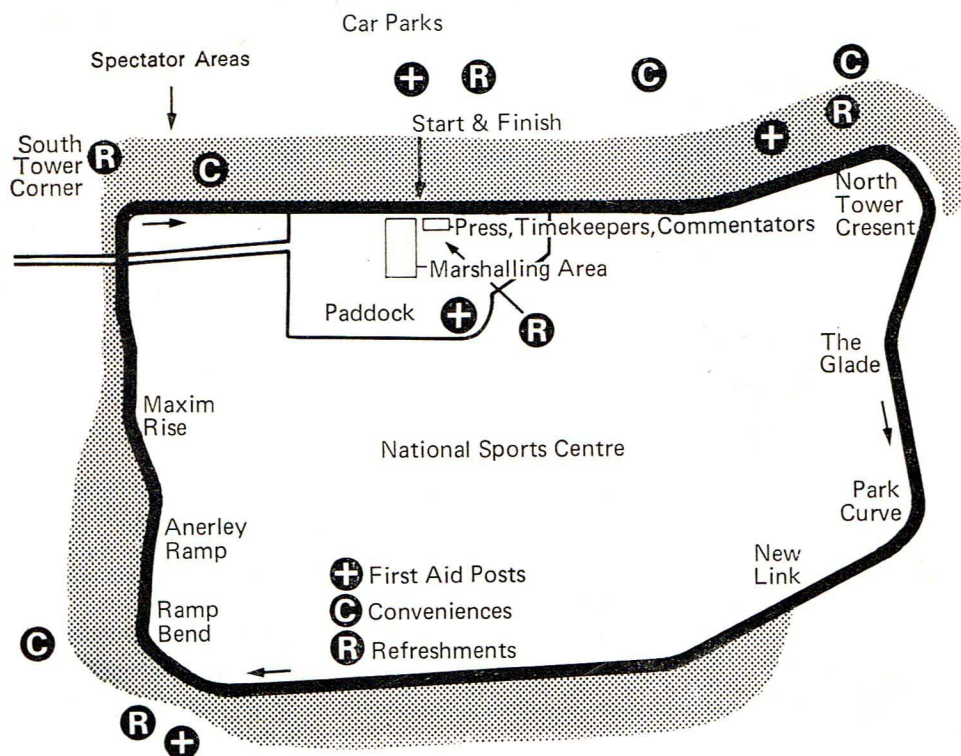


How else can a fellow get the facts about his second favourite sport? Get your copy, and the facts, from all newsagents — every Wednesday 9d.

**Motor
Cycle
News**

Map of Circuit

At the points marked (R) there is a Licensed Bar and Snacks, Tea and Cold Drinks are available. Hot Dogs, Hamburgers, Cold Drinks, Ice Cream, Sweets and Cigarettes are available from additional points around the Circuit.



Paddock Restaurant

Stadia Catering Services

are happy to announce that a permanent feature of the Circuit is the **Paddock Restaurant**

This is open to the General Public and will serve Breakfast from 8 am. The Lunch Menu will feature a choice of either a Salad Bowl or Hot Meals available until the end of the meeting.

Snacks and a Licensed Bar are also available in the Paddock Area.

Race 1

Event Six—Heat One—Five Laps

Sidecars up to 1,300 cc

The first three drivers from this heat will go forward into the Final (page 27)

No.	Driver/Passenger	Machine	c.c.	Town
1	E. N. Lloyd/T. J. Harrington	Triumph	650	East Ham
2	T. Harris/B. Harris	Triumph	649	Barnehurst
	Entrant: R. N. J. Racing			
3	A. T. Baitup/A. Diggle	Triumph	649	Dunton Green
4	J. G. Trustham/R. Cunningham	Vincent	1000	Hornchurch
5	R. Mathers/J. Borthwick	Potter-Triumph	650	Ipswich
6	R. F. G. Powell/B. W. Boldison	Triumph	649	Caddington
7	J. Douglas/B. Geal	D.G. Triumph	740	Wimbledon
8	M. D. Attrill/D. Bryant	H.R.D.	998	Crawley
9	D. Keen/G. Hunt	Vincent Spl.	998	Cricklade
10	M. Hunt/C. Newbold	Triumph	650	Desford
12	J. Swain/L. Evans	Triumph	649	Hassocks
49	T. Woodcock/Mrs. J. Woodcock	BSA	649	Tenterden

SO M FARTHERS

Fastest Lap No..... Time..... Speed.....mph

Finish Order	1st	2nd	3rd	4th	5th	6th
	9	7	8	51	3	2
Time Speed						

Race 2

Event One—Eight Laps

Solos: Over 125 cc and not over 250 cc

No.	Driver	Machine	c.c.	Town
1	S. Morrell	Yamaha	246	Ware
2	A. W. Snape	Yamaha	246	Smethwick
3	P. Courtney	Ratcliff-AJS	247	Croydon
	Entrant: Saltbox M.C.C.			
4	R. Difazio	Difazio-Suzuki	247	Frome
5	M. Balmer	N.S.U.	247	Slough
6	S. Jones	Yamaha-Bultaco	246	Leeds
7	J. R. Davis	Yamaha	246	Newport
8	K. Martin	Suzuki	247	Erith
9	C. Belcher	Greeves	246	Streatham
10	A. Thomas	Greeves	250	London
11	P. Smart	Yamaha	246	Maidstone
12	R. Keys	Yamaha	246	Worthing
13	R. A. Bridle	D.M.W.	247	Edenbridge
14	J. E. Culley	Bultaco	246	Northwood
16	T. Grotefeld	Padgett-Yamaha	246	Mill Hill
	Entrant: Blain Racing			
19	A. F. Pinnock	Yamaha	246	Forest Hill
20	C. S. Mortimer	Broad-Yamaha	246	Shere
22	A. Dunscombe	Ducati	248	Romford
28	G. Garraway	Suzuki	247	Chiswick
34	A. E. Steele	Yamaha	246	Chester
37	D. E. Patrick	Cotton	247	Enfield
38	G. Collis	Yamaha-Bultaco	249	Southampton
41	G. Hands	Yamaha	246	Chipping Campden
43	G. Corbett	Grayam	250	Harrow
50	D. Lunn	Suzuki	247	Barnet
	Reserves			
15	J. Kernan	Bultaco	244	Redruth
45	R. Faull	Yamaha	246	Redruth
44	R. M. Dunn	Witley-Greeves	247	Bracknell
48	P. Burton	Yamaha	246	Tenterden
17	I. R. Carvell	Aermacchi	246	London

Fastest Lap No..... Time..... Speed.....mph

Finish Order	1st	2nd	3rd	4th	5th	6th
Time Speed						

Race 3

Event Six—Heat Two—Five Laps

Sidecars up to 1,300 cc

The first three drivers from this heat will go forward into the Final (page 27)

No.	Driver/Passenger	Machine	c.c.	Town
13	D. H. Young/Mrs. B. Dunn	Young Mini	650	S. Norwood
14	M. J. Potter/P. Burleigh	Triumph	650	Ipswich
15	D. Plummer/M. Brett	ETY. Triumph	649	Chertsey
16	H. C. Munson/R. H. Ashenden	Triumph	650	Hackney
17	B. Uren/E. Jose	Boo-Boo	744	Redruth
18	S. Digby/B. Haddrell	B.S.A.	650	Stoke Poges
Entrant: Five Star Speed Equipe				
19	J. Renwick/P. Kennard	Vincent	998	Burgess Hill
20	J. R. Simper/	Triumph	650	Enfield
21	D. F. Wood/K. Lacey	Curley-Atlas	746	Aylesbury
Entrant: Racing Syndicate (Holdings)				
22	R. Bray/Miss B. Crawford	Campbell-B.S.A.	654	Lee
23	B. Offen/J. Dysart	Triumph	725	Claygate
24	J. Barker/C. Emmins	Triumph	650	Hornchurch

Fastest Lap No. Time Speed mph

Finish Order	1st	2nd	3rd	4th	5th	6th
	18	15	23	24	14	17
Time Speed	62.14	63.93				

Result. Race 4

Fastest Lap No. 10/1719 Time Speed 67.39 mph

Finish Order	1st	2nd	3rd	4th	5th	6th
	20	10	23	17	1	5
Time Speed	12.280					

Race 4

Event Two—Ten Laps

Solos: Over 250 cc and not over 350 cc

No.	Driver	Machine	c.c.	Town
1	R. Butcher	Seeley Ivy YAM	350	Tonbridge
Entrant: R. T. Quaife Engineering				
2	J. Blanchard	Chuck-Seeley	348	Crayford
Entrant: Chuck Customised Components				
3	C. Sanby	A.J.S.	349	Hatfield
Entrant: Gus Kuhn Motors				
4	S. Eldridge	Norton	348	Marlow
5	M. Carney	Shepherd- Kawasaki	349	Wallington
Entrant: Thomas School of Motoring				
6	G. Gibson	Yamaha	347	Highgate
7	M. Ashwood	Aermacchi-Metisse	350	Edenbridge
Entrant: Monty and Ward				
8	D. Walpole	Norton	348	Wheathampstead
9	P. Casey	Aermacchi	344	Malmesbury
10	A. Barnett			Iver
11	P. Smart	Yamaha	345	Maidstone
12	B. Lee	Lawton-Aermacchi	344	Southampton
13	K. A. Lindsay	A.E.S.	348	Hastings
14	K. F. Inwood	Norton	348	Hersham
15	C. Brown	Norton	348	Aley Green
16	T. Grotefeld	Padgett-Yamaha	348	Mill Hill
Entrant: Blain Racing				
17	B. Ditchburn	Aer-Metisse	350	Northfleet
Entrant: Stratford Motor Cycles				
20	C. Mortimer	Broad-Yamaha	348	Shere
Entrant: Denbigh-Martyn Racing Team				
21	B. Judd	Bultaco	347	Crawley
23	R. Bowler	Bultaco	349	Crawley
Entrant: Monty and Ward				
24	G. W. Sharp	Aermacchi	350	Edgware
26	A. E. Rogers	Aermacchi	344	Enfield
29	T. H. Newell	Aermacchi	344	Potters Bar
33	C. W. Hunt	Aermacchi	344	Beeston
51	B. S. Edwards	Desmo-Ducati	350	Tottenham

Reserves:

36	G. L. Bailey	Elite-Aermacchi	344	Croydon
22	A. Dunscombe	Ducati	348	Romford
Entrant: Vic Camp Motor Cycles				
18	C. A. Chivers	Norton	348	Eltham
19	W. T. Gibson	A.J.S.	349	Pett's Wood
25	R. Shewen	A.J.S.	348	South Ruislip

Enter results on page 20

Race 5

Event Six—Heat Three—Five Laps

Sidecars up to 1,300 cc

The first three drivers from this heat will go forward into the Final (page 27)

No.	Driver/Passenger	Machine	c.c.	Town
25	E. Wallbank/P. Guenigault	<i>D. & D. Norton</i>	750	Croydon
26	S. J. Downes/J. O. Harris	<i>Triumph</i>	650	Dagenham
27	T. J. Ireson/D. Lockett	<i>ETY Triumph</i>	649	Swindon
28	P. Tyack/M. J. Smith	<i>Triumph</i>	650	Iver
	Entrant: Reg Allen Motor Cycles			
29	A. W. J. Teasdale/N. A. W. Boret	<i>RGM Triumph</i>	706	Chessington
	Entrant: R.G.M. John Judge			
30	A. Swindells/F. V. Swindells	<i>Curley Atlas</i>	746	London
	Entrant: Racing Syndicate (Holdings)			
31	M. Boddice/C. Pollington	<i>B.S.A.</i>	654	Birmingham
	Entrant: Bill Boddice Garages Ltd.			
32	R. L. Ayres/G. D. Older	<i>Vincent</i>	998	Crowthorne
33	I. Evans/J. Mathuson	<i>Imp Spl.</i>	875	Beaconsfield
34	A. C. Tremble/T. G. Tremble	<i>RGM Triumph</i>	650	Luton
35	B. R. Tomlins/P. Whiteside	<i>BSA</i>	654	Hove
36	R. Aldous/P. Lucock	<i>CJ Triumph</i>	750	Croydon

Fastest Lap No. Time. Speed. mph

Finish Order	1st	2nd	3rd	4th	5th	6th
	30	31	26	32	35	36
Time Speed						

Result. Race 6

Fastest Lap No. Time. Speed. mph

Finish Order	1st	2nd	3rd	4th	5th	6th
	2	10	18	25	27	15
Time Speed						

Race 6

Event Five—Ten Laps

Solos: Over 340 cc and not over 500 cc

No.	Driver	Machine	c.c.	Town
1	R. Butcher	<i>Metisse</i>	500	Tonbridge
	Entrant: R. T. Quaife Engineering			
2	J. Blanchard	<i>Chuck-Seeley</i>	496	Crayford
	Entrant: Chuck Customised Components			
4	R. Difazio	<i>Difazio-Suzuki</i>	492	Frome
5	M. Carney	<i>Shepherd-Kawasaki</i>	405	Wallington
	Entrant: Thomas School of Motoring			
6	G. Gibson	<i>Yamaha</i>	347	Highgate
7	M. Ashwood	<i>Linto</i>	500	Edenbridge
	Entrant: Monty and Ward			
9	J. Harvey	<i>Kirby-Norton</i>	497	Colchester
	Entrant: T. W. Kirby Ltd.			
10	A. Barnett			Iver
11	P. Smart	<i>Yamaha</i>	345	Maidstone
12	B. I. Lee	<i>Lawton-Aermacchi</i>	382	Southampton
	Entrant: Syd Lawton			
14	K. F. Inwood	<i>Norton</i>	499	Hersham
15	C. Brown	<i>Norton</i>	499	Aley Green
16	T. Grotefeld	<i>Padgett-Yamaha</i>	348	Mill Hill
	Entrant: Blain Racing			
17	B. Ditchburn	<i>Seeley</i>	500	Northfleet
	Entrant: Stratford Motor Cycles			
18	R. Chandler	<i>Reg Kirby Triumph</i>	498	Sevenoaks
	Entrant: Reg Kirby (Nelson and Ford Ltd.)			
20	C. S. Mortimer	<i>Broad-Yamaha</i>	348	Shere
	Entrant: Denbigh-Martyn Racing Team			
21	B. Judd	<i>Bultaco</i>	347	Crawley
23	R. Bowler	<i>Monty-Triumph</i>	490	Crawley
30	R. Simmons	<i>Norton</i>	499	St. Mary Cray
31	C. Neve	<i>Seeley</i>	496	Portslade
32	V. Chivers	<i>Norton</i>	499	Barry
33	C. W. Hunt	<i>BSA Victor</i>	441	Beeston
39	J. R. Pepper	<i>Norton</i>	498	Whetstone
40	D. J. Habel	<i>Petty-Norton</i>	499	Crowthorne
51	B. S. Edwards	<i>Desmo-Ducati</i>	450	Tottenham

Reserves:

26	A. E. Rogers	<i>Aermacchi</i>	344	Enfield
27	R. Guyver	<i>Matchless</i>	496	London
35	R. D. Kemp	<i>Norton</i>	499	Hamble
36	P. Coombs	<i>CRD</i>	490	Croydon

Enter results on page 22

Race 7

Event Six—Heat Four—Five Laps

Sidecars up to 1,300 cc

The first three drivers from this heat will go forward into the Final (page 27)

No.	Driver/Passenger	Machine	c.c.	Town
37	P. Hardcastle/T. Halliday	Chuck-Triumph	649	London
38	R. Cass/D. Jose	Triumph	650	Chigwell
39	B. Lock/D. Bayer	Curley Atlas	746	Isle of Grain
	Entrant: Racing Syndicate (Holdings)			
40	P. Brown/M. Casey	BSA	650	Guilborough
	Entrant: Peter Chapman			
41	J. Levy/M. Wooller	Unorfordox	997	Chelmsford
42	M. Fiddaman/J. Fiddaman	MGF Kitten	650	Colchester
43	A. Sansum/A. Macfadzean	Quaife Triumph	649	Romford
44	A. Wright/A. Poole	Triumph	649	Romford
45	A. McEwan/P. Diprose	Rickman Triumph	700	Tonbridge
46	P. K. Hall/A. Lusher	BSA	654	Sutton Coldfield
47	C. E. Daynes/A. Funnel	Triumph	650	Eastbourne
48	J. Haynes/K. Haynes	Hayton	497	Reigate

Reserves: Event Six

50	M. Fathers/J. Gay	RJM Norton	745	Southall
51	P. M. Mulberry/Miss C. Potter	BSA	654	Hayes

Fastest Lap No. Time. Speed. mph

Finish Order	1st	2nd	3rd	4th	5th	6th
Time Speed	40	43	38	45	35	47

Result. Race 8

Fastest Lap No. Time. Speed. mph

Finish Order	1st	2nd	3rd	4th	5th	6th
Time Speed	32	2	9	35	6	7

Race 8

Event Four—Eight Laps

Solos: Over 175 cc and not over 1,000 cc

No.	Driver	Machine	c.c.	Town
1	B. J. Timson	Tri-Norton	649	Crawley
2	P. H. Gibson	Seeley	496	Romford
3	A. J. Archer	Triumph	649	Bristol
4	S. M. Millard	Matchless	496	Barking
5	B. Swales	Norton	499	Scarborough
6	N. C. Morgan	Norton	499	Newbury
9	J. Harvey	Kirby-Norton	497	Colchester
	Entrant: T. W. Kirby Ltd.			
12	R. Keys	Yamaha	246	Worthing
22	A. Dunscombe	Ducati	450	Romford
	Entrant: Vic Camp Motor Cycles			
23	R. Bowler	Monty-Triumph	700	Crawley
	Entrant: Monty and Ward			
26	A. E. Rogers	Alcon-Norton	745	Enfield
27	R. Guyver	Matchless	496	London
28	G. Garraway	Suzuki	247	Chiswick
29	T. H. Newell	Aermacchi	344	Potters Bar
30	R. Simmons	Stanley-Commando	745	St. Mary Cray
31	C. Neve	Seeley	496	Portslade
32	V. Chivers	Norton	499	Barry
33	C. W. Hunt	BSA Victor	441	Beeston
34	A. E. Steele	Yamaha	246	Chester
35	R. D. Kemp	Triton	649	Hamble
36	P. Coombs	CRD	490	Croydon
37	D. E. Patrick	Cotton	247	Enfield
38	G. Collis	Norton	650	Southampton
39	J. R. Pepper	Norton	498	London
40	D. J. Habel	Petty-Norton	499	Crowthorne

Reserves for Events Three and Four:

41	G. Hands	Yamaha	246	Chipping Campden
43	G. Corbett	Grayam	250	Harrow
44	R. M. Dunn	Witley-Greeves	247	Bracknell
45	R. Faull	Yamaha	246	Redruth
46	L. S. Capon	Capon-Vincent	998	Guildford
47	R. Allen	Gollner-Special	649	Portsmouth
48	P. Burton	Yamaha	246	Tenterden
49	N. Barry	Velocette	560	East Sheen
50	D. Lunn	Suzuki	247	Barnet

Enter results on page 24

Race 9

Event Three—Ten Laps

Solos: Over 175 cc and not over 1,000 cc

No.	Driver	Machine	c.c.	Town
1	R. Butcher Entrant: R. T. Quaife Engineering	Metisse	500	Tonbridge
2	J. Blanchard Entrant: Chuck Customised Components	Chuck-Seeley	496	Crayford
3	C. Sanby Entrant: Gus Kuhn Motors Ltd.	Kuhn-Seeley	750	Hatfield
4	R. Difazio	Difazio-Suzuki	492	Frome
5	M. Carney	Shepherd-Kawasaki	405	Wallington
6	G. Gibson	Yamaha	347	Highgate
7	M. Ashwood	Rickman Metisse	700	Edenbridge
8	R. Pickrell Entrant: Paul Dunstall	Dunstall	745	Hendon
10	A. Barnett			Iver
11	P. Smart	Norton	745	Maidstone
12	B. I. Lee	Lawton-Aermacchi	382	Southampton
13	P. A. Butler Entrant: Boyer of Bromley Ltd.	Boyer-Triumph	740	London
14	K. F. Inwood	Norton	597	Hersham
15	C. Brown	Norton	499	Aley Green
17	B. Ditchburn Entrant: Stratford Motor Cycles	Triumph	700	Northfleet
18	R. Chandler Entrant: Reg Kirby (Nelson and Ford Ltd.)	Curley-Norton	748	Sevenoaks
19	A. F. Pinnock	Yamaha	246	Forest Hill
20	C. S. Mortimer Entrant: Denbigh-Martyn Racing Team	Curtis-Norton	649	Shere
21	B. Judd	Bultaco	347	Crawley
24	G. W. Sharp	Kuhn-Seeley-Norton	750	Edgware
25	R. J. Biscardine Entrant: Reg Allen Motor Cycles Ltd.	RA Triumph	649	Mill Hill
26	G. L. Bailey	Elite-Triumph	649	Croydon
27	R. W. Corbett	Corbett-Domiracer	745	Cheltenham
28	D. J. Nixon Entrant: Boyer of Bromley Ltd.	Boyer-Triumph	750	Ashford
29	B. E. Rodwell	Dresda	649	London

Reserves as for Event Four.

Fastest Lap No..... Time..... Speed.....mph

Finish Order	1st	2nd	3rd	4th	5th	6th
	3	5	11	24	1	7
Time Speed						

Race 10

Event Six—Final—Ten Laps

Sidecars up to 1,300 cc

No.	Driver/Passenger	Machine	c.c.	Town
From Heat One				
40				
9				
13				
From Heat Two				
7				
8				
30				
From Heat Three				
30				
31				
20				
From Heat Four				
18				
15				
23				
Fastest Lap No..... Time..... Speed.....mph				

Finish Order	1st	2nd	3rd	4th	5th	6th
	31	40	43	30	20	38
Time Speed						

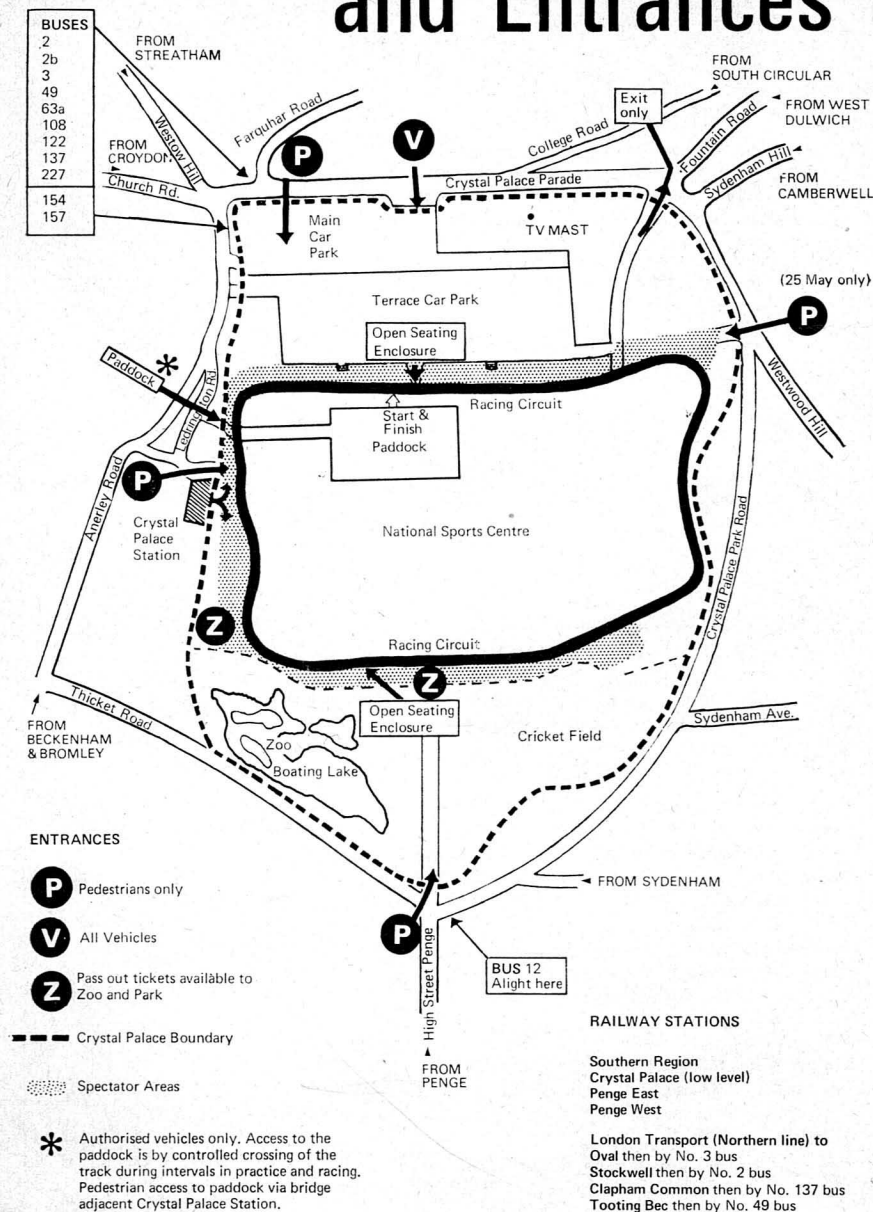
Race 11

Event Seven—Eight Laps

Solos: Vintage and Post Vintage Machines over 250 cc and not over 750 cc

No.	Driver	Machine	c.c.	Year	Town
1	J. F. Wilkinson	Norton	530	1936	Palmers Green
2	P. G. Taylor	Scott	600	1930	Cambridge
3	E. G. Luton	Velocette	348	1939	Bristol
4	M. A. Wilkinson	Velocette	348	1939	Narborough
5	R. G. Collett	Scott/Norton	490	1929	Flitton
6	S. J. L. Grigson	New Imperial	253	1935	Woking
7	H. C. Harrison	Scott	498	1930	Ealing
8	D. Mayers	AJS	500	1933	Chadwell Heath
9	W. H. Wilshire	Rudge	499	1930	Watford
10	J. R. Lane	Norton	490	1928	Chatham
11	J. R. Holmes	Rudge	499	1939	Bourne
12	M. J. Broom	Triumph	498	1938	Queniborough
13	D. Lecoq	Scott	540		Harpenden
14	K. R. Jordan	Norton	490	1938	Andover
15	P. Robson	Rudge	499	1930	Market Harborough
16	J. G. Harvey	Norton	348	1933	Colchester
17	C. J. Williams	Scott	625	1926	Welwyn
18	P. F. Whitehead	Velocette	349	1939	Solihull
19	B. Keys	Velocette	349	1932	Worthing
20	K. H. Julian	Scott	500	1937	Muxloe
21	J. H. Skeat	Rudge	500	1937	Ealing
22	T. R. Stephenson	Sunbeam	493	1926	Virginia Water
23	N. R. Stephenson	Sunbeam	493	1926	Virginia Water
24	S. Rogers	Norton	490	1939	Feltham
25	R. D. Kemp	Rudge	497	1937	Hamble

Travel Facilities and Entrances



Fastest Lap No..... Time..... Speed.....mph

Finish Order	1st	2nd	3rd	4th	5th	6th
Time	17	12	1	13	22	3
Speed						



ALCOA
BRITAIN

International Trophy Meeting Monday 25th May, 1970

Organised for GLC by the British Automobile Racing Club.

Events include:

Formula II Race for Anglo-French FII Championship and qualifying rounds for R.A.C. British Saloon and Sports Car Championships. Finals of BP Car Club Championship. Caravan Display.

Admission: 15s. Children: 2s. 6d.

Start line enclosure: 7s. 6d.

Open seating enclosures: 6s.

Transfer to Paddock: 20s.

Practice, Saturday 23 May: 5s. or *FREE* to holders of raceday tickets. Accompanied children free.

Party rates: 3s. in £ discount on advance bookings of 20 or more admission tickets.

Advance booking facilities available from the Chief Officer of the Parks Department, Cavell House, 2a Charing Cross Road, London, WC2 (01-836 9882).

Free Parking

Car parks open 9.00 am Turnstiles 9.30 am

Practice in morning starts 9.30 am First Race 12.30 pm

Pass out tickets available for children's zoo, monsters and other park facilities.

For further information please phone 01-778 4691 or write to:

Circuit Manager, Crystal Palace Offices, Anerley Hill, London, SE19

Refreshments