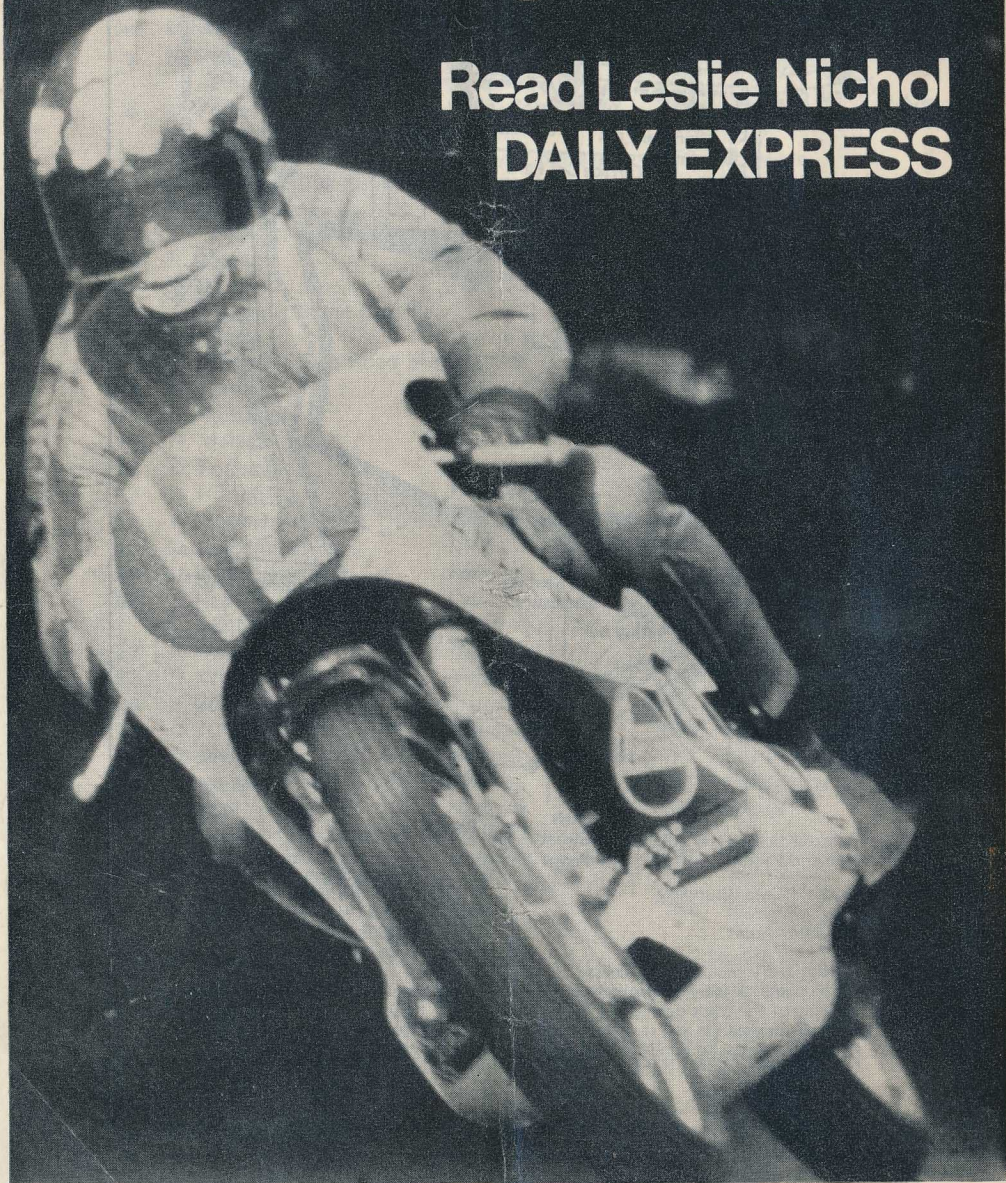


Close-up on Motor Cycle Sport

Read Leslie Nichol
DAILY EXPRESS



Easter Monday, 3 April Crystal Palace

Daily Express National Motor Cycle Meeting
Organised by SE Centre ACU for Greater London Council

Official Programme 15p



Paul Smart leads Rex Butcher through The Glade (4.9.71)



Today's Racing

National Road Race Meeting for Motor Bicycles (Solos) and Motor Cycles with Sidecars.

The Meeting is held under the General Competition Rules of the ACU together with the Supplementary Regulations of the South-Eastern Centre Auto-Cycle Union. Permit No. ACU 412 PCL No. 6.

The highlight of today's events will be the fifteen lap battle for the Daily Express Trophy. Last Easter Monday, Charlie Sanby emerged as victor over Peter Williams after a titanic struggle. Charlie is back again today, this time mounted on one of Peter Inchley's interesting Hitac-Suzukis, but although Williams is not with us there is no shortage of challengers. Alongside Charlie on the 'Grid' will be Charles Mortimer riding the Danfay-Shell-Yamaha. Backed by the mighty Japanese factory, Charles, a former lap record holder here, will be hard to beat, but there are a number of other 'likely lads'. Martyn Ashwood, now working for gearbox specialist Rod Quaife is astride a Trident powered Metisse, while Pat Mahoney is Yamsel mounted.

Tom Kirby's runner, Jim Harvey will be riding Tom's immaculately prepared 636 cc Metisse and the quiet lad from Colchester is sure to have the big four stroke up among the lightweights. Dave Potter, who leapt into the headlines last year is now with Vincent Davey's Gus Kuhn organisation and with his team mate Graham Sharp the South London prepared Commandos will certainly be highly competitive.

Ron Chandler is another Palace expert and his Kawasaki, now in a Seeley frame, should have both the speed and handling qualities so essential on this small circuit. Forecasts are definitely out, but whoever steps up to receive the Daily Express Trophy and parades it on a lap-of-honour will fully deserve your cheers.

The 250 cc race also features Mortimer and Pat Mahoney, both on Yamahas, in fact the marque dominates the entry list. A special welcome in this event to Andrea Williams who is making her National race debut. Andrea, bringing glamour to the circuit, is the sister of Peter Williams, and

Contents

- 1 Today's Racing
- 2 Officials
- 3 Programme
- 3 Awards
- 4 Palace Portrait
- 6 Palace '71
- 8 Lap Records
- 9 Lap Speed Table
- 11 Map of Circuit
- 12 Flag Signals
- 12 Acknowledgements
Crystal Palace
(coloured inset)
- 15 Race 1
- 16 Race 2
- 17 Race 3
- 18 Race 4
- 19 Race 5
- 20 Race 6
- 22 Race 7
- 23 Race 8
- 24 Race 9
- 26 Race 10
- 28 Race 11
- Travel Guide
(inside back cover)

Today's Racing (continued)

The Racing Programme is organised by the South Eastern Centre of the Auto-Cycle Union.

Officials

Stewards of the Meeting

ACU: E. A. Woods

SE Centre: A. Anastasio,

H. Woodrow

Judge

D. McNelly

Scrutineer

W. F. Beckett

Timekeepers

T. C. E. Clapp

in charge

Starter

J. Walby

Announcer

A. Robinson

Chief Marshal

K. Phillips

Clerk of the Course

T. E. Hubbuck

Assistant Clerk of the Course

S. J. Mellish

Secretary of the Meeting

B. S. Bonny,

4 Mill Place,

Chislehurst,

Kent BR7 5ND.

Press Officer

Sean Toolan

GLC Press Office

Circuit Manager

Allan Tyler

GLC Parks Dept.

her father Jack is one of our foremost motor cycle designers.

The 350 cc event brings Barry Ditchburn to the line for the first time this afternoon, and he will be on a Ted Broad prepared Yamaha. Pat Mahoney is alongside him and the leading quartet is completed by Ron Chandler and Jim Harvey, who will be appearing on Mrs Nell Ivy's Yamaha. Machinery with two, three and four cylinders will be battling throughout the afternoon for a place in the Sidecar race final. Peter Brown from Guilsborough and Birmingham's Mick Boddice must be favourites to repeat their success of last year, but George O'Dell, Dick Hawes, Alan Sansum and Gerry Boret will be out there giving of their best.

Production machines provide a stirring close to the racing today, and the line up includes most of the country's leading specialists in the class. Gus Kuhn's men are Dave Potter and Graham Sharp, while Boyer of Bromley are represented by Peter Butler on a Triumph Trident. Martyn Ashwood is also Triumph mounted but long distance race star Ron Wittich pins his hopes on a Norton.

It should be quite a hectic afternoon! Finally, our thanks to the Daily Express for agreeing to sponsor today's meeting and arranging a display of racing machinery at their offices in Fleet Street. Thanks also to Seeley Motorcycles and Monty and Ward for supplying the motorcycles on display.

POP Concert

Crystal Palace Concert Bowl

Saturday 7 June. 12 noon-8 pm

Programme

Awards

Event One

1st £25, 2nd £15, 3rd £10,
4th £8, 5th £5, 6th £3,
7th £2, 8th £1.

Event Two

1st £25, 2nd £15, 3rd £10,
4th £8, 5th £5, 6th £3,
7th £2, 8th £1.

Event Three

1st £100, 2nd £60, 3rd £40,
4th £10, 5th £7, 6th £6,
7th £5, 8th £2.

Event Four

1st £12, 2nd £10, 3rd £8,
4th £6, 5th £4, 6th £2,
7th £1.

Event Five

1st £30, 2nd £20, 3rd £15,
4th £10, 5th £7, 6th £6,
7th £5, 8th £2.

Event Six

1st £40, 2nd £30, 3rd £25,
4th £15, 5th £10, 6th £5.
£15 to the driver of the
first machine not exceeding
500 cc to finish in the
Final. £10 to the second
machine not exceeding
500 cc to finish in the Final.
Event Six Heats:
1st £8, 2nd £5, 3rd £3.

Event Seven

1st £25, 2nd £15, 3rd £10,
4th £8, 5th £5, 6th £3,
7th £2, 8th £1.

2.00 pm Race 1 Event Six First Five-lap
Heat for Racing Sidecars up to 1,300 cc

2.15 pm Race 2 Event One Ten-lap Race
for Solo Racing Motor Cycles over 125 cc
and not over 250 cc

2.35 pm Race 3 Event Six Second Five-lap
Heat for Racing Sidecars up to 1,300 cc

2.50 pm Race 4 Event Two Ten-lap Race
for Solo Racing Motor Cycles over 250 cc
and not over 350 cc

3.10 pm Race 5 Event Six Third Five-lap
Heat for Racing Sidecars up to 1,300 cc

3.25 pm Race 6 Event Five Ten-lap Race
for Solo Racing Motor Cycles over 340 cc
and not over 1,000 cc

3.45 pm Race 7 Event Six Fourth Five-lap
Heat for Racing Sidecars up to 1,300 cc

3.55 pm Interval

4.20 pm Race 8 Event Four Eight-lap
Race for Solo Racing Motor Cycles
over 175 cc and not over 1,000 cc

4.40 pm Race 9 Event Three Fifteen-lap
Race for Solo Racing Motor Cycles over
175 cc and not over 1,000 cc. The winner
will receive The Daily Express Trophy

5.10 pm Race 10 Event Six Ten-lap Final
for Racing Sidecars up to 1,300 cc

5.30 pm Race 11 Event Seven Ten-lap
Race for Production Solo Machines over
350 cc and not over 1,000 cc

Palace Portrait



Martyn Ashwood

A brush with the Law brought Martyn Ashwood into motor cycle racing. The experience quickly convinced Martyn that his high speed prowess on two wheels would be better confined to racing circuits! A Domiracer was purchased and in 1961 he made his debut at Castle Combe.

For the next season the Norton was replaced by a 7R. A.J.S. and in 1963 Martyn returned to the 500 cc class on a G50 Matchless. Two years of racing at Club and National levels was abruptly ended by a series of crashes in 1965, and it was not until 1968 before Martyn's name again appeared among the leaders.

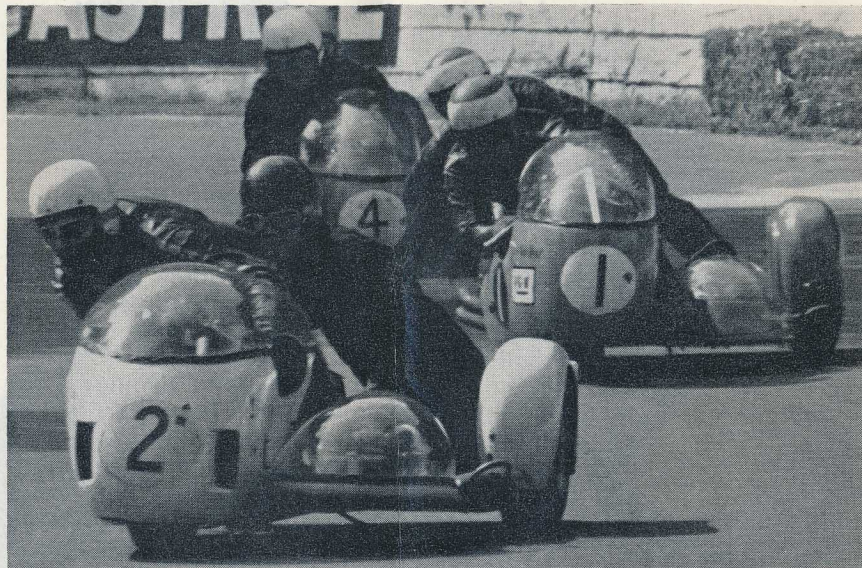
His return to top form came in the 100 mile race at Brands Hatch when he streaked across the finish line just astern of John Hartle. Martyn's mount was a hurriedly assembled hybrid, with the G50 engine having been borrowed from Tom Arter, and the frame loaned by Geoff Monty. Hartle crossed the line with an empty petrol tank, and if the race had been scheduled to last just one more lap, it would have been Martyn Ashwood who would have stepped on to the winner's rostrum.

The Ashwood/Monty association had already been in existence for several years, and in 1970 he elected to ride exclusively for Geoff. It was a good season and the highlights included winning the Lord of Lydden series and a second place to the redoubtable John Cooper in the International Trophy Race at Brands Hatch. Martyn's many successes have not been confined to the domestic scene, and indeed his favourite circuit is at Montjuich Park in Barcelona. Although Martyn has been a Crystal Palace lap record holder on several occasions victories have continued to elude him. Often a race leader, mechanical problems have then appeared which have robbed him when he has been set to take the chequered flag. Today Martyn will be mounted on Trident and Weslake powered machines and this highly talented man of Kent will be hoping that it will be his turn to be first past the black and white flag.

Palace '71

Photo below: J. St. J. Bloxham

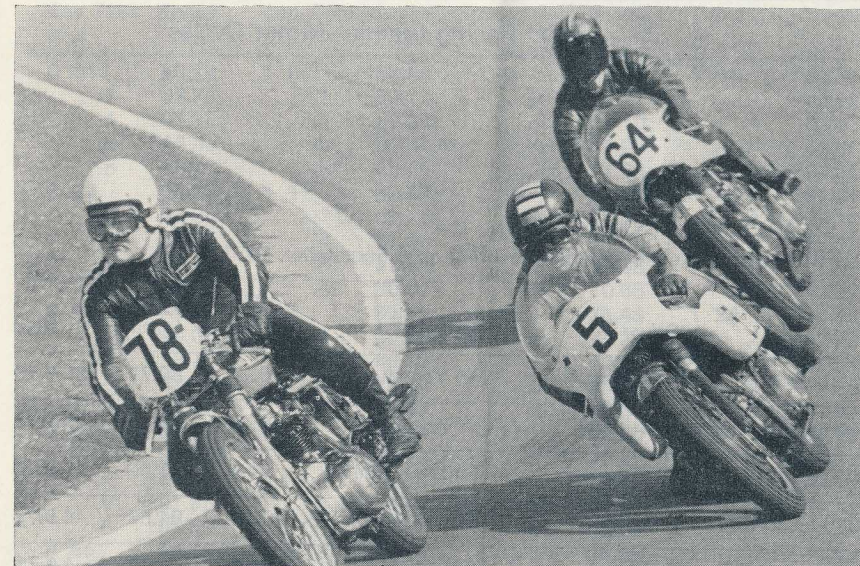
Photo bottom and right hand page: Ken Price



Opposite top: Potter/Phillips and the Borets follow Vant and Lacey around North Tower.

Opposite bottom: Ashwood (8) 740 Westlake Metisse, Pickerill (3) 741 BSA and Smart (1) 750 Triumph power through South Tower.

Below: Production Race 4.9.71. R. Geary (78) is lapped by Peter Butler (5) and David Balcombe (64).



NOTICES

Warning to the Public. Motor Racing is Dangerous. It is a condition of admission that all persons having any connection with the promotion and/or organisation and/or conduct of the meeting, including the owners of the land and the drivers and owners of the vehicles and passengers in the vehicles, are absolved from all liability arising out of accidents causing damage or personal injury (whether fatal or otherwise) howsoever caused to spectators or ticket holders.

Animals are not admitted in the interests of safety.

Programme Copyright. This programme, including the list of competitors and their racing numbers, is copyright.

The Greater London Council reserves the right to postpone, abandon, or cancel the race meeting or any part thereof.

The Promoters accept entries and driver nominations in good faith, but have no control over circumstances affecting non-starters. Every effort is made to adhere to the printed programme of competitors. The promoters, however, cannot accept responsibility for the failure of any rider or motor cycle to appear.

Paddock Tickets price 60p each, in addition to admission charge, can be obtained at the pay-box on the pedestrian bridge adjacent to Crystal Palace station. Only a limited number are available.

Records and Lap Speed Table

Road Racing Circuit—Motor Cycles

Lap Records up to and including meeting on 4 September, 1971

<i>Class</i>	<i>Driver</i>	<i>Machine</i>	<i>Time (secs)</i>	<i>Speed (mph)</i>	<i>Date</i>
250 cc solo	P. A. Smart	246 Yamaha	62.0	80.71	31.8.70
350 cc solo	R. Butcher	IVY Yamaha	62.0	80.71	5.9.71
500 cc solo	P. Mahoney	496 Kuhn Seeley	61.4	81.50	31.8.70
1000 cc solo	P. A. Smart	750 Triumph	59.2	84.53	4.9.71
Three-wheelers	G. Boret	1000 RGM BSA }	65.0	76.98	4.9.71
	P. Brown				12.4.71
1000 cc solo Production	P. Williams	750 Norton Commando	61.8	80.97	4.9.71

Race Records up to and including meeting on 4 September, 1971

<i>Class</i>	<i>Driver</i>	<i>Machine</i>	<i>Speed</i>	<i>Date</i>
250 cc solo	P. A. Smart	246 Yamaha	76.39	31.8.70
350 cc solo	R. Butcher	IVY Yamaha	78.90	4.9.71
500 cc solo	R. Ditchburn	354 Broad Yamaha	78.59	4.9.71
1000 cc solo	P. A. Smart	750 Triumph	82.03	4.9.71
1000 cc solo Production	R. Pickrell	745 Dunstall Norton	78.23	31.8.70
Three-wheelers	P. Brown	BSA	74.91	12.4.71

1 lap—1.39 miles

<i>Lap Time m s</i>	<i>Speed mph</i>	<i>Lap Time m s</i>	<i>Speed mph</i>	<i>Lap Time m s</i>	<i>Speed mph</i>	<i>Lap Time m s</i>	<i>Speed mph</i>
0 51	98.12	1 0	83.40	1 9	72.52	1 18	64.15
.2	97.73	.2	83.12	.2	72.31	.2	63.99
.4	97.35	.4	82.85	.4	72.10	.4	63.83
.6	96.98	.6	82.57	.6	71.90	.6	63.66
.8	96.60	.8	82.20	.8	71.69	.8	63.50
0 52	96.23	1 1	82.03	1 10	71.49	1 19	63.34
.2	95.86	.2	81.76	.2	71.28	.2	63.18
.4	95.50	.4	81.50	.4	71.08	.4	63.02
.6	95.13	.6	81.23	.6	70.88	.6	62.86
.8	94.77	.8	80.97	.8	70.68	.8	62.71
0 53	94.42	1 2	80.71	1 11	70.48	1 20	62.55
.2	94.06	.2	80.45	.2	70.28	.2	62.39
.4	93.71	.4	80.19	.4	70.08	.4	62.24
.6	93.36	.6	79.94	.6	69.89	.6	62.08
.8	93.01	.8	79.68	.8	69.69	.8	61.93
0 54	92.67	1 3	79.43	1 12	69.50	1 21	61.78
.2	92.32	.2	79.18	.2	69.31	.2	61.63
.4	91.99	.4	78.93	.4	69.12	.4	61.47
.6	91.65	.6	78.68	.6	68.93	.6	61.32
.8	91.31	.8	78.43	.8	68.74	.8	61.17
0 55	90.98	1 4	78.19	1 13	68.55	1 22	61.02
.2	90.65	.2	77.94	.2	68.36	.2	60.88
.4	90.32	.4	77.70	.4	68.17	.4	60.73
.6	90.00	.6	77.46	.6	67.99	.6	60.58
.8	89.68	.8	77.22	.8	67.80	.8	60.43
0 56	89.36	1 5	76.98	1 14	67.62	1 23	60.29
.2	89.04	.2	76.75	.2	67.44	.2	60.14
.4	88.72	.4	76.51	.4	67.26	.4	60.00
.6	88.41	.6	76.28	.6	67.08	.6	59.86
.8	88.10	.8	76.08	.8	66.90	.8	59.71
0 57	87.79	1 6	75.82	1 15	66.72	1 24	59.57
.2	87.48	.2	75.59	.2	66.54	.2	59.43
.4	87.18	.4	75.36	.4	66.37	.4	59.29
.6	86.88	.6	75.14	.6	66.19	.6	59.15
.8	86.57	.8	74.91	.8	66.02	.8	59.01
0 58	86.28	1 7	74.69	1 16	65.84	1 25	58.87
.2	85.98	.2	74.46	.2	65.67	.2	58.73
.4	85.68	.4	74.24	.4	65.50	.4	58.59
.6	85.39	.6	74.02	.6	65.33	.6	58.46
.8	85.10	.8	73.81	.8	65.16	.8	58.32
0 59	84.81	1 8	73.59	1 17	64.99	1 26	58.19
.2	84.53	.2	73.37	.2	64.82	.2	58.05
.4	84.24	.4	73.16	.4	64.65	.4	57.92
.6	83.96	.6	72.94	.6	64.48	.6	57.78
.8	83.68	.8	72.73	.8	64.32	.8	57.65

Paddock Restaurant

Stadia Catering Services

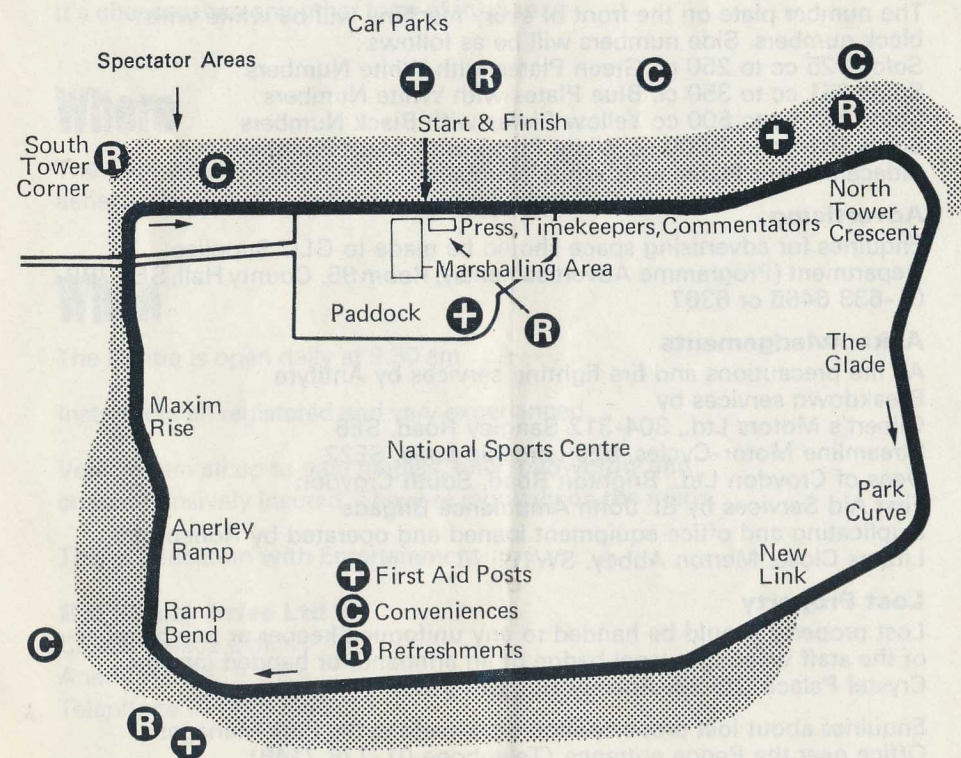
are happy to announce that a permanent feature of the Circuit is the
Paddock Restaurant

This is open to the General Public and will serve Breakfast from 8 am.
The Lunch Menu will feature a choice of either a Salad Bowl or
Hot Meals available until the end of the meeting.

Snacks and a Licensed Bar are available in the Paddock Area and at
other points around the circuit.

Map of Circuit

At the points marked (R) there is a Licensed Bar
and Snacks, Tea and Cold Drinks are available.
Hot Dogs, Hamburgers, Cold Drinks, Ice Cream,
Sweets and Cigarettes are available from additional
points around the Circuit.



Flag Signals

The following signals will be given in today's races

National Flag—Start
Black (with number)—that rider to stop
Green—Course clear
Red—stop (all drivers)
Yellow—danger, drive slowly
Chequered Black and White—Finish

Racing Numbers

The number plate on the front of every machine will be white with black numbers. Side numbers will be as follows:

Solos 125 cc to 250 cc Green Plates with White Numbers

Solos 251 cc to 350 cc Blue Plates with White Numbers

Solos 351 cc to 500 cc Yellow Plates with Black Numbers

Solos 501 cc to 1,000 cc White Plates with Black Numbers

Sidecars Black Plates with White Numbers

Advertising

Enquiries for advertising space should be made to GLC Supplies Department (Programme Advertisements), Room 95, County Hall, SE1 7PB 01-633 6465 or 6367

Acknowledgements

All fire precautions and fire fighting services by Antifyre

Breakdown services by

Gilbert's Motors Ltd., 304-312 Sangley Road, SE6

Streamline Motor-Cycles, 525 Lordship Lane, SE22

Dees of Croydon Ltd., Brighton Road, South Croydon

First Aid Services by St. John Ambulance Brigade

Duplicating and office equipment loaned and operated by Roneo Ltd.,

Littlers Close, Merton Abbey, SW19.

Lost Property

Lost property should be handed to any uniformed keeper or any member of the staff wearing a lapel badge or an armband, or handed into the Crystal Palace Offices, Anerley Hill, SE19 2BA

Enquiries about lost property should be made to the Park Manager's Office near the Penge entrance (Telephone 01-778 7148).

Crystal Palace Skid Training Centre

For the general public

Why

Road safety concerns everybody

It's terrific fun learning

It's cheaper than any other form of insurance

Where

The Centre is situated near the base of the BBC TV aerial at the Sydenham end of Crystal Palace Parade

When

The Centre is open daily at 9.30 am

Instructors all registered and very experienced

Vehicles are all up to date models, fully roadworthy and comprehensively insured. They are regularly on the roads.

This is Education with Entertainment

B B Safety Drive Ltd

Crystal Palace Offices

Anerley Hill SE19 2BA

Telephone 01-778 0491

•Maintenance & Repair Manuals •Tuning & Technical
•Vintage reprints and new books •Moto-Cross
•Speedway •USA Magazines & Book imports •



FREE

MAIL TODAY!

from CHATER & SCOTT
528 HIGH ROAD
CHISWICK W4 5RG
Don't delay...

Send me up-to-date catalogue on motor
cycle literature and all future lists as
published

NAME.....
ADDRESS.....

BRITAIN'S LEADING
BOOKSHOP FOR TRANSPORT
LITERATURE — See you soon!

Transport Bookman

St. John Ambulance Brigade

The 23rd Ambulance Division and the 5th Nursing Division of the SJAB who are giving their services voluntarily today, are celebrating their 75th Anniversary this year. The Divisions have the unique record of attending every race meeting at Crystal Palace, the oldest existing circuit in the country, since motor cycle racing first started in 1927.

To celebrate this anniversary the Divisions are hoping to purchase a new ambulance and will be making a collection around the circuit during today's meeting. Please give your generous support.

Parkinson's Disease Society

The Society are mounting a small static display of veteran/vintage vehicles on the terrace above the start line, in aid of their funds.

Chas Mortimer Fan Club

Yamaha works rider and former British Champion, Chas Mortimer writes exclusively for you about the Grand Prix Circus in a Newsheet available to all members of his Fan Club.

Discover how you can help design your road machine of the future by asking for details, from Chas Mortimer in the paddock, or by filling in the coupon below and sending to: Cees Brouwer Esq., Paviljoensgracht 40, The Hague, Holland.

Membership £1.25 (or £2.50 with Chas Mortimer Supporter T-shirt).

Name.....

Address.....

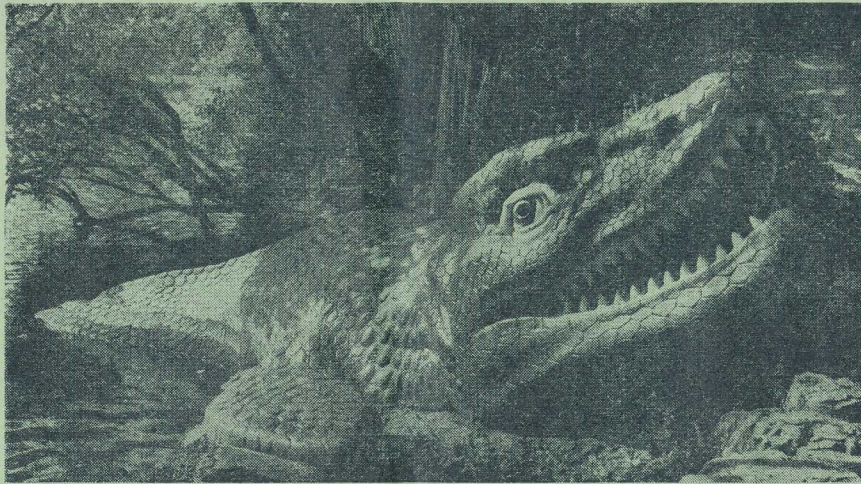
Crystal Palace

At most race meetings **Pass out** tickets can be obtained at the Ramp Bend or Penge entrances for those wishing to take advantage of the following facilities in Crystal Palace Park.

Children's Zoo. There are many interesting birds and animals on display, some of which can be safely handled by children of all ages. The Zoo is open daily until the end of September, as follows: Monday to Friday (School term time) 1.30 pm—5.30 pm. School holidays, weekends and Bank Holidays 11 am to 6 pm, admission 5p adults, 2½p children. **Pony and Trap** and pony rides for children are available in a nearby enclosure.

A generous size **Sand Pit** for children to play in is also sited near to the Zoo and pony ride enclosure, with adjacent children's toilets.





The Play Park intended for children from 5 years up to school leaving age, is situated in the corner of the cricket field. Here children can freely take part in a variety of activities including climbing, playing on rope railways and balancing apparatus. A hut, especially useful in wet weather, provides facilities for painting, modelling, handicrafts and table tennis. Trained playleaders are in charge. The play park is open until the beginning of September.

The One O'clock club provides special facilities for the under fives. Mothers are quite free to play with their children or to rest but must remain in the area of the club while their children are there. Admission is free and any child under five may join in water and sand play, modelling, painting and drawing. A hut is available. The club is staffed by trained women play leaders and is open from 1pm until 4.30 pm each weekday throughout the year.

Boating Rowing boats are available for hire at a charge of 25p per hour (plus 50p returnable deposit).

Fishing Pike, perch, roach and bream as well as some other coarse fish can be caught in the boating lake. Daily tickets cost 9p (5p for children under 16).

Catering A restaurant, situated between the lake and the Penge entrance, offers tea, coffee, minerals, light snacks and ice cream at reasonable prices.

And finally the **Crystal Palace Monsters**. These life-size models of prehistoric animals are sited on the island in the boating and fishing lake. They are well worth a visit before you leave.

The park is, of course, open every day for your enjoyment. Details of symphony concerts and children's shows here and in other GLC parks are given in "Looking for Leisure" obtainable price 10p (postage and packing 5p extra) from *The Chief Officer of the Parks Department, Cavell House, 2a Charing Cross Road, WC2H 0HJ*, any GLC park or through W. H. Smith & Son bookstalls.

Motor Racing Circuit Calendar 1972

7 May, Alvis Rally
Admission free. Organised by Alvis OC

27 May, Greater London International F2 Trophy Meeting—Practice Day
Admission 30p or free to holders or purchasers of tickets for 29 May. Accompanied children free.

29 May, Greater London International F2 Trophy Meeting
Organised for GLC by British Automobile Racing Club
Adults £1 Children 10p Paddock transfer £1.20 Seating 40p and 30p.

4 June, RAC/National Benzole 'L' Driver of the Year—Finals
Admission free. Organised by RAC.

6 August, Veteran Car Club Rally
Admission free. Organised by Veteran Car Club (London Section)

12 August, Petonyer Trophy Meeting
Promoted and organised by British Racing and Sports Car Club
Adults 50p Children 10p Paddock transfer 60p.

28 August, Metropolitan Motor Cycle Race Meeting
Organised for GLC by British Motor Cycle Racing Club
Adults 40p Children 10p Paddock transfer 60p Seating 25p and 20p.

9 September, National Motor Race Meeting
Promoted and organised by British Automobile Racing Club
Adults 50p Children 10p Paddock transfer 60p.

23 September, Daily Mirror Historic Car Race Meeting
Promoted and organised by Aston Martin Owners' Club
Adults 50p Children 10p Paddock transfer 60p.

21 October, National Karting Championships
Promoted and organised by British Kart Club
Adults 40p Children 10p Paddock transfer 60p.

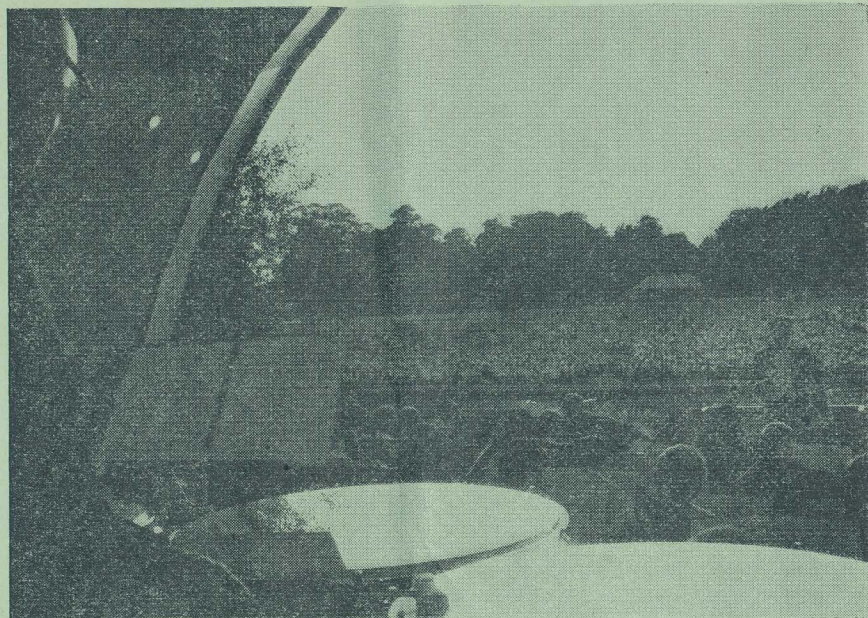
FREE PARKING at all race meetings

Notes

- (i) All details are correct at the time of publication.
- (ii) All rallies are held on the top straight of the motor racing circuit.
- (iii) Cycle racing takes place on Tuesday evenings from 25 April until 22 August (except 30 May), on Thursday evenings 1 and 22 June and 13 and 20 July and all day on Sunday 23 April, 21 May, 11 June and 3 September.

Mailing list

If you would like to receive details of events in future seasons, your name can be added to our free mailing list if you phone 01-778 4691/9612 or write to the *Circuit Manager (EP/72), Crystal Palace Motor Racing Circuit Offices, Anerley Hill, London, SE19 2BA*.



Crystal Palace Concert Bowl

A new innovation in this, the twelfth season of Sunday evening symphony concerts in the natural amphitheatre by the lake, near North Tower Crescent, will be an evening of "Music for You" introduced, of course, by Eric Robinson. This concert, on 9 July, will be given by the New Symphony Orchestra conducted by Stanford Robinson and will include items by Sullivan, Strauss, Coates, Borodin, Waldteufel and others. The Royal Liverpool Philharmonic Orchestra conducted by Charles Groves will be starting the season with a bang, two weeks earlier on 25 June when the programme will feature the "1812 Overture" with cannon effects! This programme will also include Beethoven's "Symphony No. 7". Maurice Handford will conduct the City of Birmingham Symphony Orchestra on 2 July when the main work will be Elgar's "Enigma Variations" whilst on 16 July, Andrew Davis will conduct the London Symphony Orchestra when the main item will be Tchaikovsky's "Symphony No. 4" and the programme will also include Handel's "Suite from the Water Music". The "grand finale" to the season will be on 23 July when the Royal Liverpool Philharmonic Orchestra with Charles Groves will end the concert with a performance of Handel's "Music for the Royal Fireworks" to a firework accompaniment! This final concert will commence at 8 pm; all the others start at 7.30 pm.

Deck chairs, numbered and reserved, are bookable in advance, price 30p. 2,000 unreserved deck chairs, also price 30p, are obtainable at the concert from 6.45 pm. Sitting on the grass costs 20p.

To book or obtain full programme details, please write to the Information Office, GLC Parks Department, Cavell House, 2a Charing Cross Road, London, WC2H 0HJ or telephone 01-836 9882.

Race 1

Event Six—Heat One—Five Laps

Sidecars up to 1,300 cc

The first three drivers from this heat will go forward into the Final (page 26)

No.	Driver/Passenger	Machine	cc	Town	Grid Posn.
1	P. Brown/ Entrant: Peter Chapman	B.S.A.	750	Guilsborough	1
6	M. Potter/A. D. Lodge	B.S.A.	750	Ipswich	2
17	C. Head/H. Cullen	Triumph	720	Erith	7
22	D. Wood/K. Lacey	R.S.-Atlas	750	Aylesbury	8
23	A. Swindells/D. Bayer	R.S.-Atlas	750	London	3
24	W. Mumford/J. J. Mumford	Triumph Cougar	750	Barking	6
27	P. Tyack/J. Meehan Entrant: Arbuckle Smith & Co.	Triumph	650	Iver	4
35	S. Hay/J. Hynes	M.G.F. Weslake	750	Hastings	9
36	P. Hall/A. Lusher	Kestral	654	Sutton Coldfield	5
38	C. Willsmore/K. Davy	Tri-Norton	650	Danbury	10

Fastest Lap No..... Time..... Speed.....mph

Finish Order	1st	2nd	3rd	4th	5th	6th
Time Speed	1	6	23	30	27	16

Race 2

Event One—Ten Laps

Solos: Over 125 cc and not over 250 cc

No.	Driver	Machine	cc	Town	Grid Posn.
3	P. Mahoney	Yamaha	248	Crayford	2
Entrant: Joe Francis Motors					
10	D. Street	5-Star Yamaha	247	Romford	10
11	K. Martin	Crooks Suzuki	247	Erith	3
Entrant: Eddie Crooks					
12	J. Gardiner	Kawasaki	247	Stroud	4
13	G. Matthews	Yamaha	246	Horsham	20
14	M. Gregory	5-Star Yamaha	246	Hayes	19
15	P. Smith	Greeves	246	London	18
16	B. Seward	Yamsel	246	Portsmouth	17
17	M. Inschley	A.J.S.	247	Halesowen	16
18	R. Rowlands	Yamaha	246	Cirencester	15
Entrant: Bob Webb Racing Motors					
19	G. Bailey	D. C. Suzuki	246	Croydon	9
22	R. Keys	Yamaha	247	Worthing	12
23	R. Scivvyer	Yamaha	247	Witney	6
24	A. Stanley	Greeves	246	London	24
25	E. Piner	Yamaha	246	Southall	13
26	C. Offer	Yamaha	246	Caterham	5
27	G. Hobbs	Yamaha	246	Chiswick	21
28	J. Murphy	Sheene-Yamaha	250	Crayford	22
29	A. Williams	Yamaha	250	London	25
30	P. Gripton	Yamaha	246	Tottenham	23
31	C. Ford	Yamaha	246	Chesham	14
33	S. Goodrum	Yamaha	246	Sydenham	8
41	I. Norris	Yamaha	246	Bradford-on-Avon	11
60	C. Mortimer	Danfay-Yamaha	248	Zandvoort	1
61	B. Judd	Yamaha	247	Crawley	7
Reserves:					
32	C. Belcher	Yamaha	246	London	
34	M. Waldren	Yamaha	246	Stanwell	

Fastest Lap No. 360 Time 1m.42 Speedmph

Finish Order	1st	2nd	3rd	4th	5th	6th
Time Speed	3	60	23	16	25	41

Race 3

Event Six—Heat Two—Five Laps

Sidecars up to 1,300 cc

The first three drivers from this heat will go forward into the Final (page 26)

No.	Driver/Passenger	Machine	cc	Town	Grid Posn.
2	M. Boddice/C. Pollington	B.S.A.	750	Halesowen	1
Entrant: Bill Boddice Garages Ltd.					
5	J. G. Trustham/A. Notman	Vincent	1000	Hornchurch	2
15	T. Harris/B. Harris	Triumph	746	Barnehurst	4
Entrant: R. N. J. Racing					
16	A. Withey/D. Spark	Alspar Spl.	650	Luton	7
Entrant: David Walpole					
20	D. Hawes/J. Mann	Rhombus Imp	900	Woodford Green	3
25	S. Stephens/T. Inch	Triumph	750	Tonbridge	5
28	G. Davis/R. Somerville	Triumph	740	Darlington	8
31	T. Weedy/G. Browning	T.W.S.	1000	Eastleigh	6
37	D. Hannagan/M. Gray	Triumph	750	London	9
39	R. Barry/G. Waldron	Triumph	650	Barnstaple	10

Fastest Lap No. 5 Time 1m 6.8 Speed 74.91 mph

Finish Order	1st	2nd	3rd	4th	5th	6th
Time Speed	15	2	5	16	—	—

Race 4

Event Two—Ten Laps

Solos: Over 250 cc and not over 350 cc

No.	Driver	Machine	cc	Town	Grid Posn.
3	P. Mahoney	Yamaha	346	Crayford	2
	Entrant: Joe Francis Motors				
4	B. Ditchburn	Broad-Yamaha	349	Northfleet	1
	Entrant: Broad Motors Ltd.				
5	R. Chandler	Yamaha	348	Kemsing	3
9	J. Harvey	Ivy-Yamaha	348	Colchester	4
10	R. Hill	Aermacchi	344	London	19
11	J. Watson	Yamaha	348	Rickmansworth	18
12	A. Darville	A.J.S.	349	Twickenham	20
13	D. Hunt	Seeley	350	London	23
14	R. Parr	Norton	350	Bedfont	24
15	D. Webb	Aermacchi	344	London	17
16	P. Casey	Yamaha	348	Malmesbury	25
17	R. Cover	Read-Yamaha	348	East Barnet	21
18	M. Read	Yamaha	348	Luton	16
	Entrant: N. W. Read				
19	M. Saytch	Aermacchi	344	London	15
20	J. Ringwood	Yamaha	348	Buckhurst Hill	7
21	T. Hall	Yamaha	350	Edenbridge	13
22	R. Keys	Yamaha	348	Worthing	22
26	C. Offer	Yamaha	346	Caterham	5
30	T. Pink	Yamaha	348	Newbury	6
31	K. Inwood	Norton	348	Hersham	12
34	T. B. Sparrow	Norton	348	Beckenham	10
36	T. Blain	Yamaha	348	Worcester Park	14
38	S. Morrell	Aermacchi	344	Ware	11
40	M. Trimby	Yamaha	349	Frome	8
	Entrant: Gp. Capt. S. Coulson				
61	R. Simmons	Aermacchi	344	St. Mary Cray	9
	Entrant: Cray Motorcycles				
Reserves:					
50	A. Snape	Ducati	350	Warley	
58	D. Gladwin	Ducati	340	Bristol	

Fastest Lap No. 4 Time 1 min 14.8 sec Speed 81.50 mph

Finish Order	1st	2nd	3rd	4th	5th	6th
Time Speed	<u>4</u>	<u>3</u>	<u>5</u>	<u>36</u>	<u>16</u>	<u>18</u>

Race 5

Event Six—Heat Three—Five Laps

Sidecars up to 1,300 cc

The first three drivers from this heat will go forward into the Final (page 26)

No.	Driver/Passenger	Machine	cc	Town	Grid Posn.
3	A. Sansum/C. Emmins	Quaife-Triumph	741	Romford	1
	Entrant: R. T. Quaife Engineering Ltd.				
7	D. Plummer/M. Brett	Vincent	998	Chertsey	3
9	G. Boret/N. Boret	R.D.S.	998	East Molesey	2
11	J. Levy/I. Mia	Unorfordox	997	Chelmsford	10
12	E. Vant/W. Taylor	Weslake	746	Edgware	7
13	B. Gray/D. Reeve	B.G.T.	743	High Wycombe	8
14	R. Aldous/P. Lucock	Triumph	750	Croydon	4
26	K. Vogl/N. Shelton	B.S.A.	748	Hinckley	5
29	M. Smith/J. Burford	Triumph	740	London	9
32	A. Moss/R. English	Triumph	740	Sidcup	6

Fastest Lap No. Time Speed mph

Finish Order	1st	2nd	3rd	4th	5th	6th
Time Speed	<u>3</u>	<u>12</u>	<u>32</u>	<u>29</u>		

Race 6

Event Five

Solos: Over 340 cc and not over 1,000 cc

No.	Driver	Machine	cc	Town	Grid Posn.
1	C. Sanby	Hitac-Suzuki	500	Hatfield	2
2	M. Ashwood	Weslake-Metisse	740	Edenbridge	3
	Entrant: R. T. Quaife Engineering Ltd.				
3	P. Mahoney	Yamsel	354	Crayford	4
	Entrant: Joe Francis Motors				
4	B. Ditchburn	Broad-Yamaha	354	Northfleet	7
	Entrant: Broad Motors Ltd.				
5	R. Chandler	Kawasaki-Seeley	498	Kemsing	6
6	D. Potter	Kuhn Norton	745	London	9
	Entrant: Gus Kuhn Norton Centre				
7	G. Sharp	Kuhn Norton	745	Edgware	8
	Entrant: Gus Kuhn Norton Centre				
9	J. Harvey	Kirby-Seeley	636	Colchester	5
	Entrant: T. W. Kirby Ltd.				
10	D. Nixon	Boyer-Trident	741	Ashford	10
	Entrant: Boyer of Bromley				
12	R. Allen	Brickwoods-Metisse	496	Portsmouth	11
	Entrant: Park Road Motorcycles				
13	D. Habel	Matchless	500	Crowthorne	13
14	V. Chivers	Seeley-Triumph	649	Barry	14
17	T. Newell	Norton	499	Potters Bar	15
18	P. Gibson	Suzuki	500	Romford	16
19	G. Bailey	B.T.K. Kawasaki	498	Croydon	17
22	J. Cowie	Dresda	740	London	18
	Entrant: Dresda Autos Ltd.				
24	J. Wilkinson	Suzuki	498	London	19
31	K. Inwood	Norton	597	Hersham	20
32	R. Jennings	Seeley	496	Salisbury	24
35	B. Flak	Kawasaki	498	Whyteleafe	23
37	B. Smith	Norton	499	Reigate	25
40	M. Trimby	Yamaha	349	Frome	22
42	C. Neve	Seeley	496	Portslade	12
60	C. Mortimer	Danfay-Yamaha	354	Zandvoort	1
	Entrant: Danfay Distributors Ltd.				
61	R. Simmons	Aermacchi	344	St. Mary Cray	21

Race 6 continued

Reserves:

27	J. Rodgers	Seeley	500	London
	Entrant: Premier Motors Ltd.			
28	R. Wittich	Saunders-Norton	747	Luton
	Entrant: A. & H. Saunders Motors			
29	A. Cooper	Kuhn Seeley	745	Dunstable
62	A. Goldsmith	Kennedy-Lyster	750	London Colney

Fastest Lap No. 6 Time 1m 1.2 Speed 81.76 mph

Finish Order	1st	2nd	3rd	4th	5th	6th
Time Speed	<u>6</u>	<u>10</u>	<u>3</u>	<u>2</u>	<u>9</u>	<u>7</u>

Race 7

Event Six—Heat Four—Five Laps

Sidecars up to 1,300 cc

The first three drivers from this heat will go forward into the Final (page 26)

No.	Driver/Passenger	Machine	cc	Town	Grid Posn.
4	G. O'Dell/B. Boldison Entrant: Arbuckle Smith & Co.	B.S.A.	750	Hemel Hempstead	1
8	E. Lloyd/T. J. Harrington	B.S.A.	654	London	2
10	J. Barker/A. Macfadzean	B.S.A.	750	Hornchurch	3
18	R. Cass/A. Barclay	Triumph	650	Ilford	4
19	M. Fathers/J. Gay	Norton	810	Southall	5
21	R. Dixon/R. Simpson	SAAB	850	Folkestone	7
30	R. Wilson/B. Vousden Entrant: M. Cole	Triumph	750	Larkfield	8
33	J. Davis/R. Crellin	Rumble-B.S.A.	749	Liverpool	6
34	J. Simper/	Weslake	683	Enfield	9
40	W. Hall/P. Minion Entrant: T.M.N. Racing Developments	Triumph	650	Mickleover	10

5-47.6 71.93 mph

Fastest Lap No. Time Speed mph

Finish Order	1st	2nd	3rd	4th	5th	6th
Time Speed	4	10	30	8	21	34

Race 8

Event Four—Eight Laps

Solos: Over 175 cc and not over 1,000 cc

No.	Driver	Machine	cc	Town	Grid Posn.
31	K. Inwood	Norton	597	Hersham	14
32	R. Jennings	Seeley	496	Salisbury	3
33	S. Goodrum	Yamaha	246	Sydenham	4
34	T. B. Sparrow	Norton	348	Beckenham	5
35	B. Flak	Kawasaki	498	Whyteleafe	13
36	T. Blain	Yamaha	348	Worcester Park	15
37	B. Smith	Norton	499	Reigate	12
38	S. Morrell	Aermacchi	344	Ware	6
39	D. McMillan	Triumph	649	Wimbledon	11
40	M. Trimby	Yamaha	349	Frome	2
41	I. Norris	Suzuki	497	Bradford-on-Avon	7
42	C. Neve	Seeley	496	Portslade	1
43	A. Ryall	Seeley	496	London	25
44	R. Peers-Jones	Commando-Metisse	750	Malden	16
46	S. Scanes Entrant: Linsleigh Engineering Ltd.	Norton-Matchless	499	Leighton Buzzard	10
47	J. H. L. Sadler	Monard	650	Tonbridge	18
48	L. G. Lambourne	Norton	750	Newbury	17
49	P. Smith	BJS-Norton	750	New Malden	9
50	G. Groom	Norton	745	Clophill	21
51	J. Bishop	Bishop-Enfield	736	Bristol	20
52	K. Stevens	Triumph Norton	649	Bristol	22
53	P. Selleck	Norton	499	Upminster	19
54	R. Cull	Norton	745	Stroud	8
56	A. Richmond Entrant: Brighton and Dist. M.C.C.	Norton	499	Littlehampton	24
59	C. Wall Entrant: R. H. Smith Motorcycles Ltd.	Norton	745	Hayes	23
Reserves:					
58	D. Gladwin	Ducati	340	Bristol	

Fastest Lap No. Time Speed mph

Finish Order	1st	2nd	3rd	4th	5th	6th
Time Speed	53	49	50	18	41	31

Race 9

Event Three—Fifteen Laps

Solos: Over 175 cc and not over 1,000 cc

The Daily Express Trophy Race

No.	Driver	Machine	cc	Town	Grid Posn.
1	C. Sanby	Hitac-Suzuki	500	Hatfield	2
2	M. Ashwood	Trident-Metisse	740	Edenbridge	3
	Entrant: R. T. Quaife Engineering Ltd.				
3	P. Mahoney	Yamsel	354	Crayford	4
	Entrant: Joe Francis Motors				
4	B. Ditchburn	Broad Yamaha	349	Northfleet	7
	Entrant: Broad Motors Ltd.				
5	R. Chandler	Kawasaki-Seeley	498	Kemsing	6
6	D. Potter	Kuhn-Norton	745	London	9
	Entrant: Gus Kuhn Norton Centre				
7	G. Sharp	Kuhn-Norton	745	Edgware	8
	Entrant: Gus Kuhn Norton Centre				
8	P. Butler	Boyer-Trident	741	Eltham	10
	Entrant: Boyer of Bromley				
9	J. Harvey	Kirby-Seeley	636	Colchester	5
	Entrant: T. W. Kirby Ltd.				
10	D. Nixon	Boyer-Trident	741	Ashford	11
	Entrant: Boyer of Bromley				
11	K. Martin	Crooks-Suzuki	492	Erith	12
	Entrant: Eddie Crooks				
12	R. Allen	Norton-Commando	749	Portsmouth	13
	Entrant: Park Road Motorcycles				
13	D. Habel	Matchless	500	Crowthorne	14
14	V. Chivers	Seeley-Triumph	649	Barry	15
15	C. Jones	Triumph	490	Epsom	16
17	T. Newell	Norton	499	Potters Bar	18
18	P. Gibson	Suzuki	500	Romford	19
19	G. Bailey	BTK-Kawasaki	498	Croydon	20
20	J. Ringwood	Yamaha	348	Buckhurst Hill	21
21	T. Hall	Monard	650	Edenbridge	22
	Entrant: Monty and Ward				
22	J. Cowie	Dresda	740	London	23
	Entrant: Dresda Autos Ltd.				
23	R. Scivyer	Yamaha	247	Witney	24
24	J. Wilkinson	Suzuki	498	London	25
60	C. Mortimer	Danfay-Yamaha	354	Zandvoort	1
	Entrant: Danfay Distributors Ltd.				
61	B. Judd	Yamaha	247	Crawley	17

Race 9 continued

Reserves:

26	C. Offer	Yamaha	346	Caterham
27	J. Rodgers	Seeley	500	London
	Entrant: Premier Motors Ltd.			
28	R. Wittich	Saunders Norton	747	Luton
	Entrant A. & H. Saunders Motors			
29	A. Cooper	Kuhn-Seeley	745	Dunstable
30	T. Pink	Yamaha	348	Newbury

Fastest Lap No..... Time..... Speed.....mph

Finish Order	1st	2nd	3rd	4th	5th	6th
Time Speed	10	6	4	2	7	3

Race 10

Event Six—Final—Ten Laps
Sidecars up to 1,300 cc

No. Driver/Passenger Machine cc Town

From Heat One

.....
.....
.....

From Heat Two

.....
.....
.....

From Heat Three

.....
.....
.....

From Heat Four

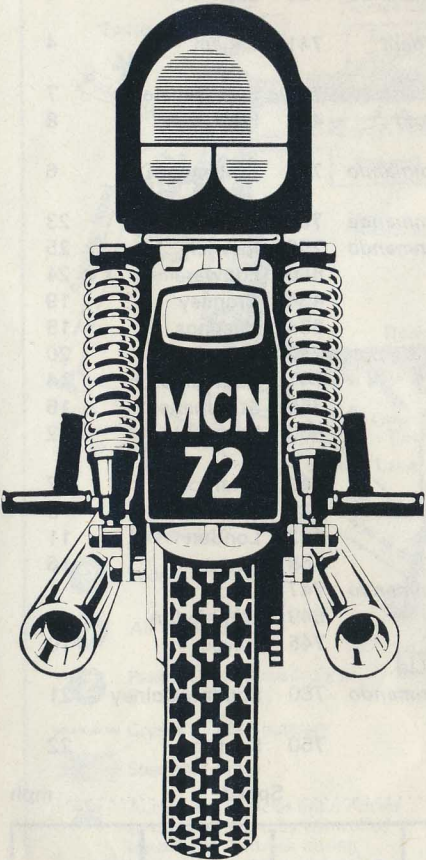
.....
.....
.....

Fastest Lap No..... Time..... Speed.....mph

Finish Order	1st	2nd	3rd	4th	5th	6th
Time Speed						



is the super bike
paper.



Every
Wednesday

Looking For Leisure

The new style guide to
GLC entertainment and
recreation in the parks.

Price 10p (by post 15p)

from any GLC Park,
GLC Parks Department,
Cavell House,
2a Charing Cross Road,
London WC2H OHJ
or through any
W. H. Smith & Son Ltd.
bookstall.

Race 11

Event Seven—Ten Laps

Solo Production Machines: over 350 cc and not over 1,000 cc

No.	Driver	Machine	cc	Town	Grid Posn.
2	M. Ashwood	Triumph	649	Edenbridge	3
	Entrant: R. T. Quaife Engineering Ltd.				
6	D. Potter	Kuhn-Commando	745	London	2
	Entrant: Gus Kuhn Norton Centre				
7	G. Sharp	Norton-Commando	750	Edgware	5
	Entrant: Gus Kuhn Norton centre				
8	P. Butler	Triumph Trident	741	Eltham	4
	Entrant: Boyer of Bromley				
10	R. Baylie	Honda	736	East Grinstead	7
11	K. Martin	Crooks Suzuki	492	Erith	8
	Entrant: Eddie Crooks				
12	R. Allen	Norton-Commando	749	Portsmouth	6
	Entrant: Park Road Motorcycles				
13	H. Kerner	Norton-Commando	750	London	23
14	D. Cartwright	Norton-Commando	750	Ipswich	25
15	G. Mallick	Triumph	650	Edgware	24
16	D. Forrester	Ducati	436	Bromley	19
17	C. Horton	Triumph	654	Hastings	18
18	W. Thomas	Norton	745	Luton	20
19	D. Balcombe	Triumph	741	Southampton	14
20	H. A. Robertson	Triumph	750	St. Albans	15
21	T. Hall	Kawasaki	500	Edenbridge	12
	Entrant: Monty and Ward Ltd.				
22	R. Geary	Triumph	649	Brighton	17
23	D. Whapshott	Norton-Commando	748	Luton	9
24	J. Wilkinson	Suzuki	492	London	11
25	C. G. Overy	Triumph	668	Luton	16
28	R. Wittich	Norton-Commando	747	Luton	1
39	D. McMillan	Triumph	649	Wimbledon	13
59	C. Wall	Norton	745	Hayes	10
	Entrant: R. H. Smith Motor Cycles Ltd.				
62	A. Goldsmith	Norton-Commando	750	London Colney	21
	Entrant: Ian Kennedy Motor Cycles				
71	P. Hitchcox	Norton	750	Kenton	22

Fastest Lap No..... Time..... Speed.....mph

Finish Order	1st	2nd	3rd	4th	5th	6th
Time Speed						

Travel Facilities and Entrances

