

**GOLDEN VALLEY CLASSIC M.C.C.**  
AFFILIATED TO A.M.C.A.

**1989**  
**A BRITISH**  
**BIKE**  
**BONANZA**  
**WEEKEND**

AT  
SALLYWOOD FARM,  
HORSLEY,  
GLOS.

on  
SATURDAY 1st JULY  
and  
SUNDAY 2nd JULY

---

PROGRAMME 50p

---



*Bookings for  
admission*



## SCRUMPTIOUS 'TATERS

*Speciality Mobile Baked Potato Caterer*

*Available for your  
Shows or Special Functions*

*Tel: Bill Smith - Witney (0993) 771646*

## **PETER HAMMOND Motor Cycles Ltd** *for*

*BSA and TRIUMPH SPARES and REPAIRS*

- Frame Straightening
- Reboring ● Sleaving
- Crankshaft Grinding

**44 WATERMOOR ROAD  
CIRENCESTER  
GLOUCESTERSHIRE**

Telephone: (0285) 652467 & 655358

GOLDEN VALLEY CLASSIC M.C.C.

## **PRE '65 TRIAL AND SCRAMBLE PAST MASTERS DEMONSTRATION AND RE-UNION**

**BY KIND PERMISSION OF LANDOWNERS  
MR. & MRS. DAVID DUNLOP**

**PLEASE USE LITTER BINS PROVIDED  
All vehicles parked at owner's risk.**

### **WARNING**

**MOTOR SPORT IS DANGEROUS AND PERSONS ATTENDING THIS MEETING DO  
SO ENTIRELY AT THEIR OWN RISK**

It is a condition of admission that all persons having any connection with the promotion and / or organisation and / or conduct of the meeting, including the owners of the land and the drivers and owners of the vehicles, are absolved from all liability arising out of accidents howsoever caused resulting in damage and / or personal injury to spectators or ticket holders.

The Organisers reserve the right to alter or omit any part of the programme.

Your attention is drawn to the serious consequences which could arise following an accident caused by unauthorised riding in the paddock. Liability for any claim could rest with the owner of the machine being used (or the parents, in the case of a minor).

### **NOTICE TO THE PUBLIC**

The Event is being held on private property and you are strictly forbidden to cause damage in any way. Spectators are forbidden on the Course or in the Competitor's Paddock or to proceed beyond the spectator area. Persons ignoring the Course Marshals do so at their own risk. The Promoters do not accept responsibility for any accident arising therefrom.



# TRIALS RIDERS

## LIST OF ENTRIES FOR TRIAL

CLASS A: UP TO 250 cc

CLASS B: UNIT CONSTRUCTION OVER 251 cc PRE '70

CLASS C: NON UNIT CONSTRUCTION OVER 251 cc PRE '65

CLASS D: RIGID PRE '65

CLASS E: SIDECARS PRE '70

Class No.	Name	Town	Machine	Year c.c.
A 1	E. Ward	Ewell	Greeves TES	1962 246
B 2	Julian Grebby	Pluckley	Triumph 5TA	1960 510
A 3	Mike Collings	Hitchin	BSA C15T	1960 250
C 4	Mike Naish	Bristol	Matchless G3LC	1953 410
A 5	Peter Meek	East Grinstead	Greeves Scottish	1955 197
A 6	Clint Taylor	Stonehouse	BSA C15	1959 249
D 7	Mike Baverstock	Ashford	Ariel	1942 600
B 8	Gordon Davis	Bexley Heath	BSA B40	1964 350
A 9	Ian Henning	Gloucester	Greeves TDS	1961 246
A 10	Dave Harrop	Kidlington	Greeves TES	1963 250
A 11	Chris Hayle	Kidlington	Greeves TFS	1964 250
A 12	Sean Harrop	Kidlington	Greeves TES	1963 250
B 14	Roger Thompson	Northfleet	Triumph T90	1963 350
E 15	Michael & Nicholas Ford	Whitminster	Greeves/BSA	1963 350
A 16	Russell Howland	High Wycombe	Greeves Anglian	1965 250
C 17	Steven Allen	Cam	Royal Enfield Bullet	1958 350
A 18	Peter Edwards	Knighton	Triumph Tiger Cub	1963 199
A 19	Tony Beattie	Swindon	BSA C15T	1961 250
B 20	John Grazier	Bromsgrove	BSA B40	1964 343
B 21	Phil Matthews	Ross on Wye	BSA B40	1963 350
B 22	C. Sawyer	Chippenham	BSA 1964	350
C 23	Brian Newbury	Chippenham	AJS 16C	1955 347
A 24	S Freeman	Newport, IOW	BSA C15	1961 250
A 25	R. Groves	Cowes, IOW	Triumph Cub	1964 199
C 26	Eric Streeter	Yarmouth, IOW	Matchless GL3	1953 350
B 27	Colin Harvie	Tidworth	BSA B40	1962 350
B 28	Richard Caselton	Erith	Triumph	1959 500
A 29	Roy Saunders-Jones	Evesham	Sprite	1964 250
A 31	P. Smith	Mold	BSA C15	1959 250
E 32	John & Matthew Lean	Truro	Greeves TFS	1961 246
E 33	N. Georges & Robin Head	Betchworth	Ariel HT	1956 500
A 34	M. Blackwell-Smyth	Enniskillen, N.I.	Triumph Cub	1962 200
A 35	John Metcalfe	Rochdale	Dot WR	1964 246
A 36	S. Smith	Stonehouse	BSA C15	1959 250
B 37	Keith Beards	Weston Super Mare	BSA B40	1961 343

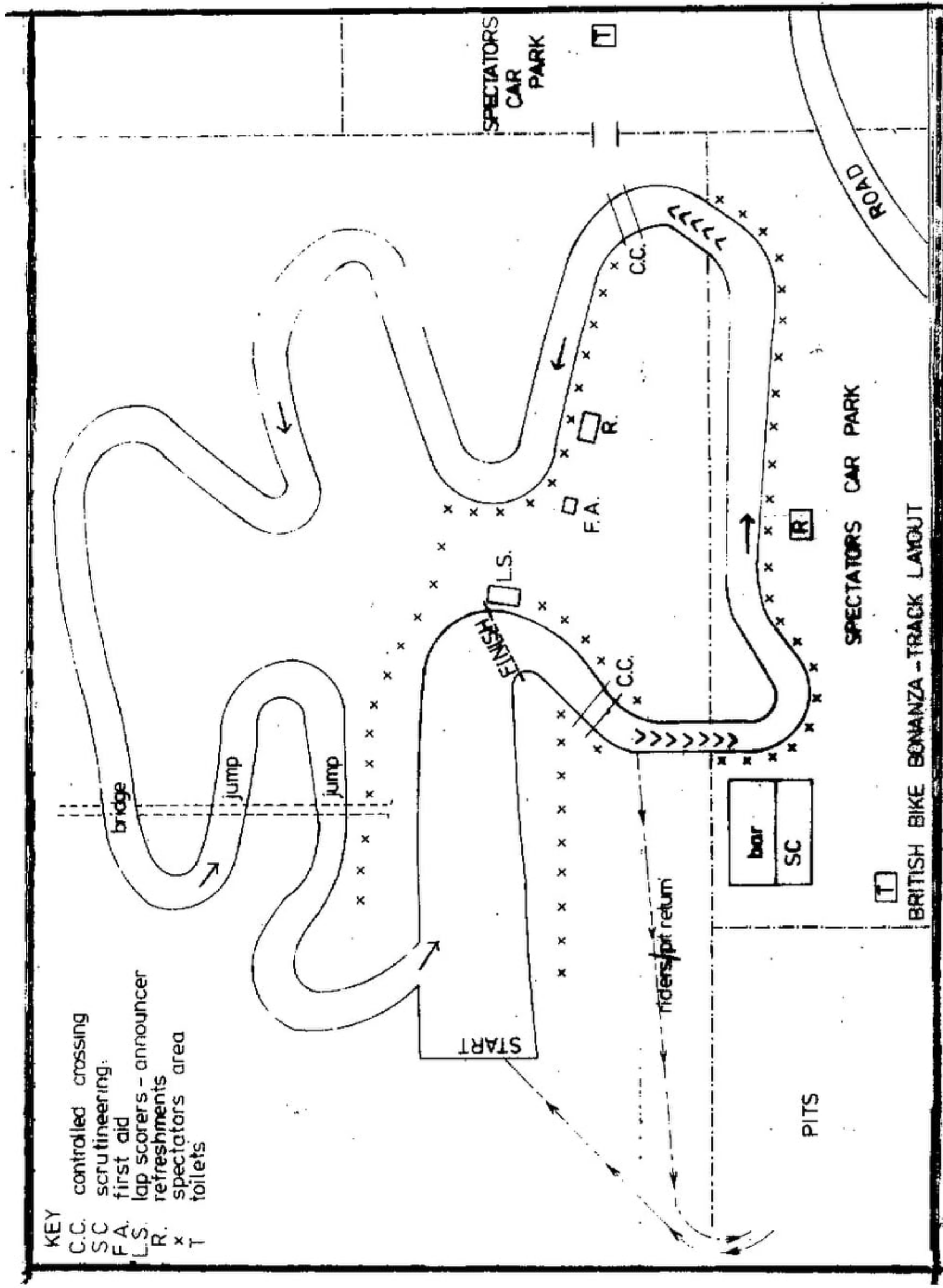
A 38	Ralph Lee	Magor	Triumph Cub	1965 200
C 39	Derek Pillinger	Bath	Ariel HT5	1964 500
A 40	S. Humphrey	Timsbury	Greeves TFS	1964 250
B 41	D. Younger	Twyford	WDB40	1962 350
B 42	Ken Sedgley	Droitwich	BSA B40	1962 350
C 43	Laurie Saunders	High Wycombe	AJS	1962 503
B 44	Frank Lerner	High Wycombe	BSA B40	1964 343
A 45	Doug Dearden	Ashurst	Greeves Scottish	1960 197
B 46	Brian Rice	Southampton	BSA B40	1966 350
B 47	A. Samways	Southampton	BSA B40	1965 350
A 48	Pete Milbourne	Botley	Greeves Scottish	1961 250
A 49	John Bibby	LLangollen	BSA C15T	1959 250
B 50	David Brady	Rotherhithe	BSA B40	1964 343
C 51	Robert Poole	Rotherhithe	Triumph Bitza	1963 500
D 52	W. Haines	Northolt	Ariel HT5	1954 500
E 53	N & Sw. Devonshire	Otford	Ariel HT	1956 500
D 54	Streeton Honor	Stratford on Avon	AJS	1954 350
B 55	Douglas Griffin	Stroud	BSA B40	1964 350
A 56	Michael Grimes	Aberdoyr, Scotland	Greeves 24 TAS	1959
C 57	Bob Vaughan	Camberley	AJS	1958 350
D 58	D. Mitchell	HUnton	Norton 500T	1951 490
E 59	Steven Iles & M. Harding	Kingswood	Tribsa	1959 650
A 60	Tim Beattie	Marlborough	Greeves Scottish	1959 250
C 61	J. Richardson	Kingswinford	Royal Enfield Bullet	1960 346
A 62	Doug Theobald	Bury St Edmunds	Triumph Cub	1961 200
A 63	Paul Morgan	Uttoxeter	Dot	1964 250
B 64	Ken Morton	Chepstow	BSA B40	1964 343
C 65	John Jackson	Gnosall	Royal Enfield Bullet	1959 350
D 66	Ron Macbeth	Hitchin	AJS 18CS	1949 500
C 67	David Woods	Dunstable	AJS 18C	1959 500
B 68	Trevor Kemp	Bury St Edmunds	BSA B40	1964 343
B 69	M. Ward	Eastleigh	BSA B40	1959 350
B 70	Ramon Ruscoe	Gnosall	BSA B40	1961 348
A 71	Stuart Griffiths	Stafford	Dot	1964 247
B 72	B. Messenger	Northwood	Triumph 5TA	1964 500
C 73	D. Carter	Farnham	Norton 500T	1949 500
D 74	Reg May	Godalming	BSA B22	1938 250
E 75	Ken & D. Hopkins	Basingstoke	Tribsa 5T	1956 500
C 76	Chris Scott	Cheltenham	Velocette	1936 270
D 77	Cyril Smith	Pinner	AJS	1952 350
B 78	M. Dismore	Farnham	BSA B40	1962 343
B 79	John Dismore	Farnham	BSA B40	1962 343
A 80	Dave Newholm	Guildford	BSA C15T	1963 250
A 81	Chris Hill	Cheltenham	BSA C15T	1959 249
C 82	Joe Owen	Solihull	Royal Enfield Bullet	1957 346
E 83	Robert Sibley	Wimbourne	AJS	1955 500

E	84	Charlie Fryer & Andy Wood	Beckenham	Ariel	1949	500
B	85	Graham Archer	Solihull	BSA B40	1964	350
C	86	Terry Savery	Redditch	Royal Enfield Bullet	1954	500
A	87	Dave Reynolds	Redditch	Royal Enfield		250
B	88	Alan Wright	Solihull	BSA B40	1964	350
A	89	Paul Wilkins	Stroud	Greeves TES	1964	250
E	90	Mick Baldwin & D. Halfacre	Bracknell	Lavariel HT	1964	500
A	91	Doug Nolan	Tetbury	Triumph Tiger Cub	1963	199
B	92	Chris Goulding	Nailsworth	BSA B40	1964	350
D	93	Martin Knight	Hereford	Matchless G80C	1953	500
E	94	Bill, & Chris Camp	Tewkesbury	Tribsa TR6	1956	650
C	95	Brian Fisher	Colchester	Royal Enfield Bullet	1961	350
E	96	R. Percival & R. French	Spring Valley	Triumph Metisse	1958	650
A	97	John Townsend	Leamington Spa	BSA C15T	1960	250
C	98	Graham Braybrook	Sudbury	Royal Enfield Bullet	1959	350
A	99	Richard Bird	Doone	BSA C15	1963	250
C	100	Michael Short	Albury Heath	Ariel HT	1956	500
A	101	Wal Fox	Bromsgrove	Dot	1950	250
A	102	Joe Howells	Bromsgrove	BSA Bantam	1963	174
A	104	John Palmer	Bath	Greeves TCS	1959	246
A	105	M. Bridger	Tonbridge	Ariel HT5	1956	500
B	106	Mick Clarkson	Rushden	BSA B40	1967	343
A	107	Dave Langston	Stratton on Fosse	BSA		250
E	108	Roger & David Tuck	Easter Compton			
C	109	Joe Stollery	Sazmundham	Royal Enfield Bullet	1960	370
B	110	Andrew Islip	Huddersfield	Matchless G3LS	1950	350
A	111	B. Jones	Sonning Common	BSA C15T	1959	249
E	112	Philip Lowman & M. Gillingham	Hamworthy	BSA B44	1964	441
D	113	Peter Hallows	Sturminster Newton	Ariel WNG	1942	350
C	114	A. Drewett	Trowbridge	Royal Enfield Bullet	1957	350
C	115	Mike Peach	Eastbourne	Ariel HT	1957	500
D	116	A. Tanner	Farnborough	BSA B2	1936	250
A	117	M. Griffiths	Cam	BSA B40	1959	349
C	118	Richard Islip	Huddersfield	AJS	1955	350
B	119	John Thomas	Swansea	BSA B40	1967	350
C	120	R. Hiron	Finedon	Ariel	1957	500
A	121	M. Rees		Greeves	1959	250
C	122	A. Dovey		Triumph		650
A	123	C. Sneyd	Stafford	Greeves	1960	250
A	124	D. Hingerty	Stafford	Triumph	1961	200
	126	Tony Sullivan	Oxford	Matchless	1962	500
	127	Harvey St. Claire	Oxford	B40		350
	128	Scott Lee	Isle of Wight	BSA	1961	250

## CASTROL BONANZA SCRAMBLE - 1989

No.	Rider	Home	Machine	c.c.
1	Andy Robertson	Powys	BSA Goldstar	500
			Metisse	500
2	Kenneth Sundstrom	Sweden	Triumph	500
3	Mike Gillingham	Bournemouth	Triumph Metisse	500
4	Ralph Lee	Magor	Triumph	500
			BSA	441
5	Brian Edwards	Sevenoaks	Matchless Metisse	500
6	Michael Short	Guildford	Tribsa	500
			Triumph	650
7	Graham Challis	Mortimer	Metisse	500
8	Pat Wigglesworth	Winchcombe	Tribsa	500
9	Adrian Moss	Stroud	Matchless G50	500
			Matchless Metisse	500
10	Mike Baldwin	Bracknell	Matchless	500
11	Roy Abbott	Northants	Triumph Metisse	500
			Metisse	250
12	Paul Payne	Kent	Tribsa	500
			DOT	250
13	Ken Andrews	Southampton	Rickman BSA	440
14	Kevin Nicholls	Hereford	BSA	400
15	Frank Hinc	Newton Abbot	Tribsa	500
16	Terry Webb		Matchless Metisse	
17	Phil Gittins	Hereford	Tribsa	500
18	Gerald Llewellyn	Dyfed	Greeves	250
19	Richard Bird	Doone	Metisse	500
20	Pat Minns	Abingdon	Cotton	250
21				
22	Stephen Humphrey	Timsbury	Greeves	250
			Grumph	500
23	Pierre Borms	France	Matchless Metisse	500
24	Brendon Owen	Dyfed	Greeves	250
25	Keith Beards	Weston super Mare	Norton	500
26	Alan Cockerton	Birkenhead	Triumph	500
27	Dave Cartwright	Birkenhead	Triumph Cub	200
28	William Moran	Kent	Matchless	500
			Ariel	500
29	Reg Squire	Exeter	Greeves	250
30	G. Iles	Swindon	Metisse	500
31	Steve Long	Oxford	Tribsa	500
			Triumph Metisse	500

32	Robin York	Brighton	BSA	441
33	Ken Morton	Chepstow	Greeves	250
34	Ken Sedgeley	Droitwich	Greeves	
35	Rod Ralph	Hants	DOT	250
36	Nils Lilja	Sweden	BSA	500
37	John Ives	Haverhill	DOT	250
38	Jeff Wilson	Ripley	TBA	
39	Jean-Pierre Bechet	France	Triumph Metisse	500
			BSA Metisse	500
40	Phil Corin	Coleford	BSA	343
41	Andrew White	Weston Super Mare	Triumph Metisse	500
43	Michael Sumnall	Crewe	DOT	250
44	Tony Sanderson	Newport	Greeves	250
45	D. Mitchell	Hunton	Matchless	500
46	Colin Keers	Pensey	Greeves	250
47	Cyril Hawkins	Newport	BSA	350
			Triumph Metisse	500
48	Fabrice Bazire	France	Matchless Metisse	500
49	R. Harrison	Dorset	Tribsa	500
50	Thierry Borms	France	Triumph Metisse	500
51	Jan Holtberg	Sweden	Triumph Metisse	500
52	Derek Pillinger	Bath	Cotton	250
53	John Clissold	Stroud	BSA 350	
54	Stephen Masters	Bartley	Tribsa	500
55	Jonb Brough	Minchinhampton	Royal Enfield	500
56	Merv South	Tewkesbury	Greeves	250
			BSA	350
57	Robin James	Herefordshire	NSU Cotton	250
			BSA Gold Star	500
58	Sean Harrop	Kidlington	Greeves	250
59	Roger Neale	Paignton	BSA Gold Star	
			Triumph Metisse	
60	Peter Smith	Clwyd	BSA	441
61	Mark Owen	Longworth	Greeves	250
62	Bob Le Marquand	Jersey	Triumph Metisse	650
63	Andy Craig	Dyfed	BSA	250
64	Jose Castiaux	France	BSA Metisse	441
65	Michael Newman	Parkend	Norbsa	
66	Stephen Gerrish	Yeovil	Tribsa Metisse	500
67	Roger Ennis	Lydney, Glos.	Cotton	250
68	Steve Allen	Dursley	Greeves	250
			BSA	350
69	Steve Martin	Rochdale	Matchless Metisse	500
70	Philip Loman	Poole	Metisse	500
71	Andy Gaunt	Cheltenham	Triumph Metisse	



72				
73	Alan Whittington	Cheltenham	Greeves	250
74	Giles Greginet	Belgium	Rickman BSA	440
75	Tonw Vatier	Belgium	Rickman Triumph	500
76	Roland Legeune	Belgium	Tribsa	500
77				
78	H. Williams	Swansea	BSA Victor	440
79				
80	Jim Shepherd	Haverhill	Cotton	250
			Greeves	250
81	Robert Sibley	Wimborne	Tribsa	650
83	John Lean	Truro	Greeves	250
89	David Simpson	Wells	Triumph Metisse	500
94	Paul Gattas	Shropshire	Matchless Metisse	500
101	Peter Pilbeam	Surrey	BSA	440
104	Clive Coopey	Stroud	BSA	250
106	Ron Parkin	Kent	Triumph Metisse	500
107	Guy Benfield	Soton	Greeves	250
111	Barry Ward	Nailsworth	Greeves	250
113	Clive Cole	Cheltenham	BSA Victor	441
115	Dave Allen	Avon	Triumph Metisse	650
			BSA Victor	441
117	Phill Fry	Wimborne	Triumph Metisse	500
121	Alan Arnott	Camberley	BSA Gold Star	499
123	Jorg Niemeyer	Berlin	BSA	500
			BSA	441
125	A. Stevens	Cheltenham	Greeves	250
133	Mike Sartin	Yeovil	Triumph Metisse	500
			DOT Demon	250
135	Colin Mitchell	Northampton	DOT	250
137	Roger Stevens	Cheltenham	Tri Greeves	35
			BSA	250
138	Peter Meek	East Grinstead	Greeves 250	
139	Mick Minns	Abingdon	Greeves	250
140	Peter Lockwood	Cheshire	BSA Victor	441
			BSA Gold Star	500
141	John Duncombe	Wednesfield	Triumph Metisse	
			Tribsa	
144	Clive Ranford	Worcester	BSA B40	350
			BSA	499
145	Roger Fisher	Worcester	Triumph Metisse	498
146	Nigel Moss	Stroud	Rickman Metisse	440
147	Ken Simms	Langley Mill	DOT	250
			BSA	441
			Triumph Metisse	500

149	Charlie Pattison	Wincanton	Greeves	250
151	W. Millar	Minster Lovell	Triumph	500
153	Tony Jones	Stroud	BSA	250
			BSA	350
156	Neil Copestake	Banbury	Greeves	250
157	Nick Bridges	Warwick	Triumph	500
158	Stephen Hiscock	Hants	BSA Metisse	441
159	Bob Hiscock	Hants	Tri Metisse	490
163	W. Haines	Northolt	Ariel	500
168	Nick Palmer	Callington	BSA	500
			Metisse	
170	Max Jones	Kings Stanley	BSA Gold Star	500
			BSA Victor	441
172	Ray Tawn	Romford Essex	Tribsa	500
181	Mike Davies	LLandrindod Wells	Triumph Metisse	500
183	Ken Odlin	Awsworth	Matchless Metisse	500
186	Pete Collins	Whitminster	BSA	441
188	Mike Peeling	Reading	Greeves	250
190	Geoff Chandler	Southampton	Triumph Metisse	500
197	Gerald Tanner	Cirencester	Triumph Metisse	500
204	Jason Peeling	Reading	Greeves	250
207	Michael Beech	Cradley Heath	Greeves	250
			BSA	441
209	Dave Culpin	Somerset	Greeves	250
			BSA	441
210	Robert Wright	Weston-super-Mare	BSA Metisse	441
			Triumph Metisse	
217	Charlie Chivers	Blagdon	Matchless Metisse	500
218	P. Coley	Dorset	Greeves	247
220	Stephen Wright	Weston-Super-Mare	BSA	440
221	R. Cornelius	Kent	BSA	440
222	John Metcalfe	Lancs	DOT	246
224	Alistair Reed	Cambridge	BSA	441
228	Neville South	Tewkesbury	BSA	250
233	A. Cameron	Cheltenham	DOT	250
237	Norman Horn	Cheltenham	BSA	350
239	Geoff Lewis	Hutton	Velocette	350
243	Mike Collings	Hitchin	Triumph Metisse	650
			Tribsa	650
			Greeves	250
244	David Morgan	Cheltenham	DOT	250
249	David Lewis	Grays	Mabsa	600
257	Julian Grebby	Pluckley, Kent	Matchless	500
271	M.A. Vangucci	Kings Langley	AJS	498

289	Steven Iles	Kingswood	Tribsa	650
290	Bob Guest	Reading	BSA	250
			Triumph 500	
291	Bert Willis	California	Triumph	500
294	Tony Islip	Aylesbury	Triumph Metisse	500
295	C. Comte	Colchester	Rickman Metisse	500
296	Mike Wathen	Coal Ole	Matchless Metisse	500
299	Alan Millar	Totnes	Puissant	500
317	Darren Midwinter	Birdlip	BSA C15	250
			BSA Victor Metisse	441
			Velocette	250
			Velocette	500
319	Norby Griffin	Exeter	Gold Star	500
			Triumph Metisse	500
321	John Taylor	Hants	Matchless Metisse	500
323	Richard Wreathall	Newmarket	DOT	250
324	Mick Noyce	Hants	Cochise	500
328	Mark Allen	Avon	BSA Victor	441
333	Marvyn Lovell	Elmore	BSA Victor	441
			Cotton	250
335	Adrian Dickenson		Greeves	250
336	John Stocker	Wokingham	BSA	441
337	Vic Turner	Basingstoke	DOT	250
			Greeves	250
340	Michael Cheese	Erith	Matchless	500
349	Julian Edwards	Bromsgrove	Triumph	200
351	David Minns	Abingdon	Greeves	250
356	Nicholas Ford	Whitminster	Greeves	250
369	Colin Flashman	Gunnislake	Greeves	250
372	John Burton	Sedgley	Matchless Metisse	500
389	Paul Pringle	Plymouth	Triumph Metisse	500
			Triumph Metisse	500
412	Mac Taylor	Bath	Triumph Metisse	650
444	Paul Morgan	Uttoxeter	Greeves 2T	
			BSA Victor	
485	Ken Walker	Worcs	BSA	350
519	Austen Kear	Cheltenham	Tribsa	500

## PROGRAMMME OF RACES FOR SCRAMBLE

### RACE 1 6 LAPS

#### Heat 1 of British Bikes up to 350 cc

Riders No's: 11, 12, 18, 20, 22, 24, 27, 29, 33, 34, 35, 37, 40, 43, 44, 46, 47, 52, 53, 56, 57, 58, 61, 63, 67, 68, 73, 80, 83, 104, 107, 111, 125.

RESULTS .....

### RACE 2 6 LAPS

#### Heat 2 of British Bikes up to 350 cc

Riders No's: 133, 135, 137, 138, 139, 144, 147, 149, 153, 156, 188, 204, 207, 209, 218, 222, 228, 233, 237, 239, 243, 244, 290, 317, 323, 333, 335, 337, 349, 351, 356, 369, 444, 485.

RESULTS .....

### RACE 3 6 LAPS

#### Heat 1 of British Bikes Pre '60

Riders No's: 5, 6, 8, 9, 10, 12, 15, 17, 25, 28, 31, 36, 38, 45, 49, 54, 55, 57, 59, 65, 68, 76, 80, 81.

RESULTS .....

### RACE 4 6 LAPS

#### Heat 2 of British Bikes Pre-60

Riders No's: 121, 123, 137, 140, 141, 157, 163, 168, 170, 172, 177, 207, 209, 239, 243, 257, 271, 317, 319, 340, 349, 485, 519.

RESULTS .....

### RACE 5 6 LAPS

#### Heat 1 of British Bikes Unit Construction over 251 cc

Riders No's : 3, 4, 7, 11, 13, 14, 19, 22, 26, 30, 31, 32, 38, 39, 40, 41, 50, 56, 60, 62, 63, 74, 75, 78, 133, 146, 319, 333.

RESULTS .....



**RACE 6** **6 LAPS**

Heat 2 of British Bikes Unit Construction over 251 cc

Riders No's: 101, 113, 115, 117, 123, 140, 145, 147, 151, 158, 159, 168, 170, 178, 186, 197, 207, 220, 221, 224, 290, 291, 294, 317, 328, 336, 389, 412, 444, 485

RESULTS .....

**RACE 7** **10 LAPS**

FINAL of British Bikes Pre '60  
(15 Riders from each Heat)

RESULTS 1st .....2nd ..... 3rd .....

**RACE 8**

PAST MASTERS DEMONSTRATION

John Draper: Ron Langston: Jim Timms: Vic Allen: Tony Davis: John Avery:  
Pat Minns: Len Vale-Onslow's (Junior & Senior): John Giles: Phil Mellers: Pat  
Lamper: Ken Sedgeley: Dave Jeremiah: Cyril Hawkins; etc.

**INTERVAL**

**RACE 9** **10 LAPS**

FINAL of British Bikes up to 350 cc  
(15 Riders from each Heat)

RESULTS: 1st .....2nd .....3rd .....

**6 LAPS**

Heat 1 of Pre-Unit Construction over 251 cc

Riders No's: 2, 4, 5, 6, 9, 23, 28, 31, 39, 42, 47, 48, 51, 53, 54, 59, 65, 66, 69, 70,  
71, 83, 89, 94, 106, 299.

RESULTS: 1st .....2nd .....3rd .....

**RACE 11** **6 LAPS**

Heat 2 of Pre-Unit Construction over 251

Riders No's: 115, 121, 141, 145, 147, 163, 172, 181, 183, 190, 210, 217, 239, 243,  
248, 249, 271, 289, 295, 296, 317, 321, 324, 372, 389, 519.

RESULTS: 1st .....2nd .....3rd .....

**RACE 12** **10 LAPS**

FINAL of Unit Construction Over 251 cc  
(15 from each Heat)

RESULTS: 1st .....2nd .....3rd .....

**RACE 13** **10 LAPS**

FINAL of Pre Unit Construction over 251 cc  
(15 from each Heat)

RESULTS: 1st .....2nd .....3rd .....

**RACE 14** **6 LAPS**

Non Winners Race  
(Open to Riders not placed in First 3 in any Final)  
Heats as required

RESULTS: 1st .....2nd .....3rd .....

**RACE 15** **10 LAPS**

INTERNATIONAL INVITATION RACE  
(British & Foreign Machines)

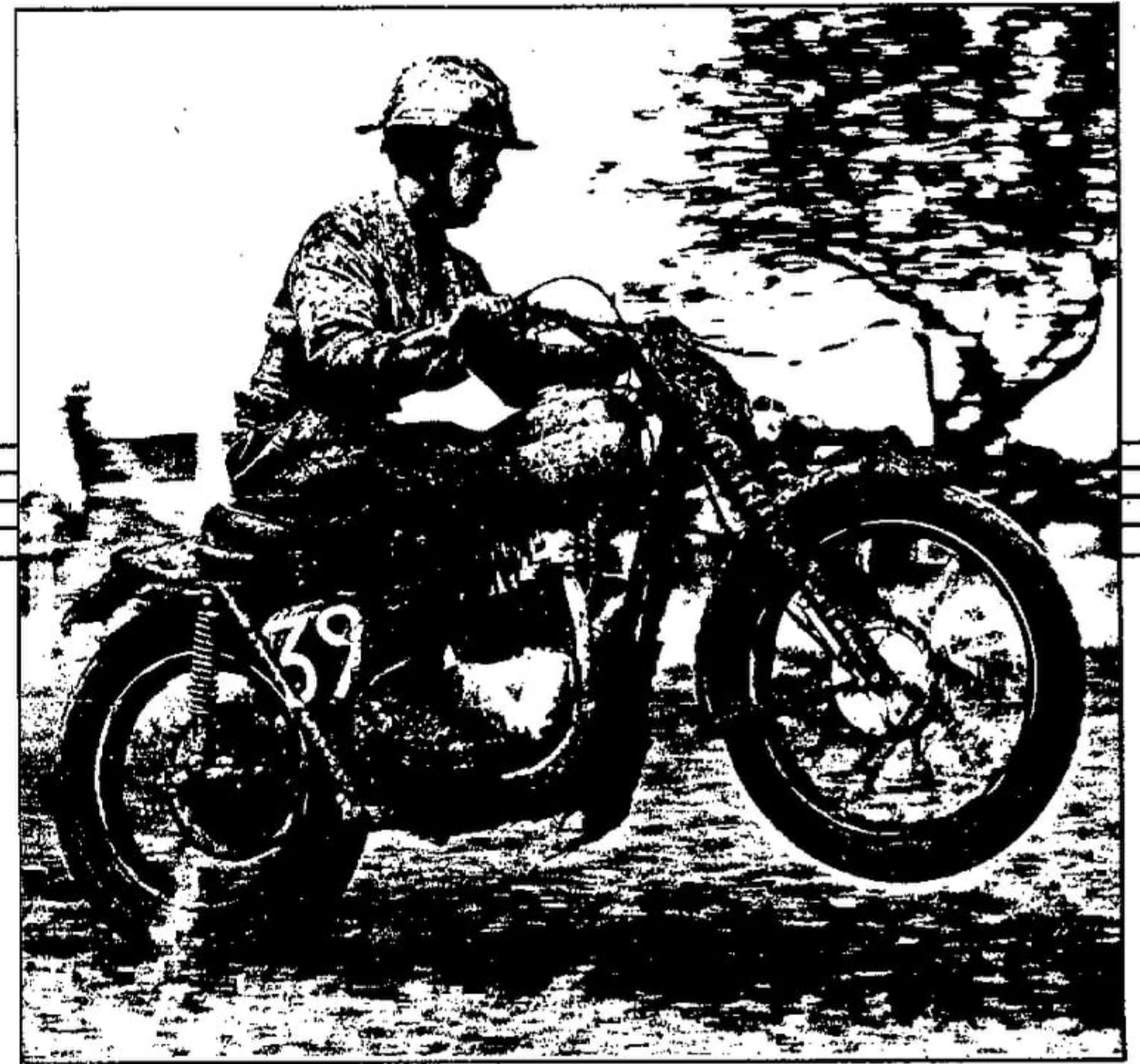
RESULTS: 1st .....2nd .....3rd .....

**RACE 16** **10 LAPS**

FINAL OF NON WINNERS  
(13 from each Heat)

RESULTS: 1st .....2nd .....3rd .....

AUTOGRAPHS



**CLASSIC**  
*Motorcycling*  
**LEGENDS**

IS PROUD TO SUPPORT  
**THE BRITISH  
BIKE BONANZA**

NEXT ISSUE OF THE QUALITY QUARTERLY  
ON SALE JULY 7 £1.45

# **ADRIAN MOSS**

## **Classic Machines and Spares**

Rickman Metisse Stockists of genuine MK3 and MK4 Motocross Spares cleared from the factory

- *FIBRE GLASS*... Red, Green, Ivory with Avon Mitchenell transfers... Also tank transfers. Instruction manuals £2.00 each. Matchless G3LC - G80CS - G85CS - engine/gearbox and clutch spares.
- SEATS... BSA Gold Star Scramble Seats - Rickman MK3 and MK4 - Greeves Hawkstone - Greeves Challenger - Victor 441GP seats (two types) - and BSA Bantam (sprung seats) - Norton Manx - AJA 7R - Matchless G50 - AMC Trials Seat (pear shaped) - Universal Trials Seat (banana shaped) - Pillion Bump Pats (steel base) - Replacement covers for ALL Motor Cycles, just send old cover - Also Tribsa Seats.
- CONTROL LEVERS... Ball ended control levers with adjusters, all British made, 1" and 7/8" - £6.00 each. Comp Mag Levers (long type) - £4.75 each. Air levers (short type) - £3.75 each. Price includes V.A.T..
- *TYRES AND RIMS*... Amal Carburetors also in stock. Replica HT frames.
  - ALL SPARES PLUS POSTAGE AND PACKAGING

---

### **★ MACHINES FOR SALE ★**

**1973 BSA B50 MX NEW**  
**LATE TYPE DAYTONA ENGINE**  
**1965 BSA B40 ENGINE W.D.**

---

**Visiting 9-30 am to 1-00 pm Saturdays - or by appointment**  
**14 PARLIAMENT STREET, STROUD, GLOUCESTERSHIRE GL5 1DP**  
**Telephone: 0453 758026**