



The 1991 BRITISH SIDECAR MOTO-CROSS GRAND PRIX



OFFICIAL
PROGRAMME £1.50

25TH/26TH
AUGUST

FOR CONDITIONS
OF ENTRY SEE INSIDE

SUZUKI

SIMPLY THE BEST...

BUT DON'T TAKE OUR WORD FOR IT...

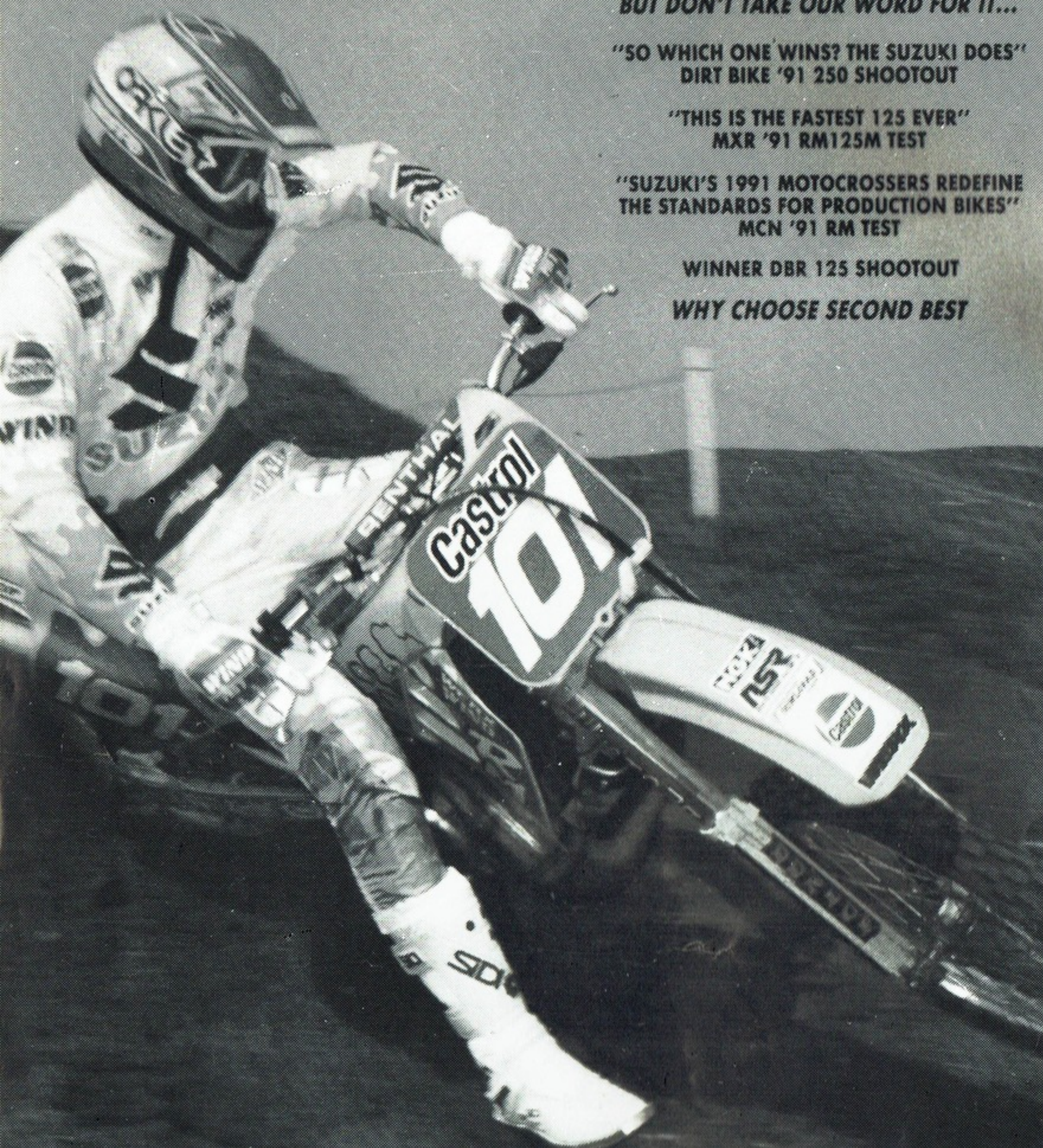
"SO WHICH ONE WINS? THE SUZUKI DOES"
DIRT BIKE '91 250 SHOOTOUT

"THIS IS THE FASTEST 125 EVER"
MXR '91 RM125M TEST

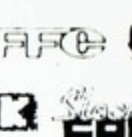
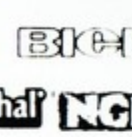
"SUZUKI'S 1991 MOTOCROSSERS REDEFINE
THE STANDARDS FOR PRODUCTION BIKES"
MCN '91 RM TEST

WINNER DBR 125 SHOOTOUT

WHY CHOOSE SECOND BEST



Castrol



AVON. Fowlers of Bristol. 0272 770466
BEDS. Ron Humphreys Mts. Leighton Buzz. 0525 375240
BUCKS. Ford & Ellis, Chesham. 0494 772343
CUMBRIA. Crooks Suzuki, Barrow-in-Furness. 0229 22342
DEVON. Bridge Leisureworld, Exeter. 0392 432654
HANTS. Hanham Mts. Ringwood. 0425 473956
HANTS. Des Helyar Mts. Pamber Heath. 0734 700665
HEREFORD. Stormer MX Ltd. Ross on Wye. 0989 62350

HERTS. Saunders Mts. Knebworth. 0438 811524
KENT. Vic Eastwood, Swanley. 0322 69469
LANCS. KAIS Moto-Cross, Atherton. Nr Manchester. 0942 896366
LANCS. Town & Country Mts. Ashton-u-Lyne. 061 339 3918
(DR & RMX only)
N. IRELAND. Russells Mts. Belfast. 0232 327809
STAFFS. CGH MX Ltd. Tutbury. 0283 813489
SUFFOLK. Banks Racing, Bury St Edmunds. 0248 701671

SUSSEX. K&M Mts. St Leonards-on-Sea. 0424 439767
TYNE & WEAR. Bike Sport, Newcastle. 091 232 8970
WALES. E.T. James & Sons, Radnorshire. 0597 810481
WEST. MIDLANDS. Dirt Wheels, Coventry. 0203 301852
WILTS. PR Taylor & Son, Chippenham. 0249 657575
YORKS. Colin Appleyard, Keighley. 0535 606311
YORKS. Lee Bros Mts. Sowerby Bridge. 0422 831727

*NATIONAL PARTS DISTRIBUTOR

WARNING!
FAILURE TO FOLLOW THE INSTRUCTIONS IN THE OWNERS MANUAL COULD INCREASE YOUR RISK OF SERIOUS INJURY.
Always wear the correct protective clothing including an approved helmet, eye protectors, hand protection, and leg protection.
Remember whether expert or novice, training improves skills. NEVER ride under the influence of alcohol or other drugs. Always ride within your capabilities.

The products and services supplied by Heron Suzuki sponsors are used by Heron Suzuki during competition. Heron Suzuki PLC can make no warranty to their suitability or safety.

The actions pictured here took place under controlled conditions with professional riders. Never attempt any action which is potentially dangerous or beyond your level of skill.

HERON SUZUKI PLC, 46-62 GATWICK ROAD, CRAWLEY, WEST SUSSEX RH10 2XF. TEL: (0293) 518000.



RM/RMX/DR 'M' SERIES 1991

THE INTERNATIONAL SIDECAR MOTOCROSS GRAND PRIX OF GREAT BRITAIN

Organised by the Waterloooville Motorcycle Club on behalf of the Auto Cycle Union. An International event counting towards the 1991 Sidecar Motocross Championship of the World. Held under the International Sporting Code of the F.I.M., the National Sporting Code of the Auto Cycle Union, the Standing Regulations for Motocross and the Supplementary Regulations issued by the Promoting Club.

I.M.N: 26/9.

PERMIT NO: ACU 1258

TTC NO: 270

INTERNATIONAL JURY:

President of the JuryPalle Host Andersen (Denmark)
Clerk of the Course (International)John Bussell
Assistant Clerk of the CourseRoy Collins
Safety OfficerBarry New
Racing ManagerGeorge Skeates

DELEGATES F.M.N.:

HOLLAND (KNMV)H. Polsvoort
SWITZERLAND (FMS)Jacquemaï Alban

and any other representative nominated by an FMN in accordance with Art.50.08 of the FIM Code.

Secretary of the JuryMrs. G. Ryall
Steward appointed by the Southern CentreA. Bailey
Steward appointed by Waterloooville ClubD. Ryall
Timekeeper i/cF. Henley
Chief Technical StewardT. Burton
Noise Meter Operators i/cD. Kingswell
Finish JudgeH. Gott
StarterM. Millard
Start GatePortsmouth Motorcycle Racing Club
Chief MarshalC. Warren
Lapscore i/cMrs. S. Cook
DoctorDr. S. Drew
First AidBritish Red Cross Society
Press OfficersR. Gardiner, M. Wells
AnnouncersJ. Theobald & L. Blyth
CommentatorJ. Mould
Race ReaderMrs. R. Goater
Programme Sales i/cD. Grace
Secretary of the MeetingMrs. G. Ryall

57, Fir Copse Road, Purbrook, Portsmouth

ACKNOWLEDGEMENTS

Timing Equipment by Motor Sport Timing

Catering by R & W Caterers

Beer Tent by 'Ye Olde George' East Meon

The Waterloooville Motor Cycle Club wish to thank all Marshals, Helpers, Red Cross Officials, and Hampshire Police for their co-operation, and to Mr. & Mrs. Peter Lambert for the use of their land.

WARNING

MOTOR SPORT IS DANGEROUS AND PERSONS ATTENDING THE MEETING DO SO ENTIRELY AT THEIR OWN RISK.

"It is a condition of admission that all persons having any connection with the promotion and/or organisation and/or conduct of the meeting including the owners of the land and the drivers of the vehicles, are absolved from all liability arising out of accidents howsoever caused resulting in damage and/or personal injury to spectators or ticket holders."

MAKE SURE YOU READ

MANNIX DEVLIN'S MX DIARY

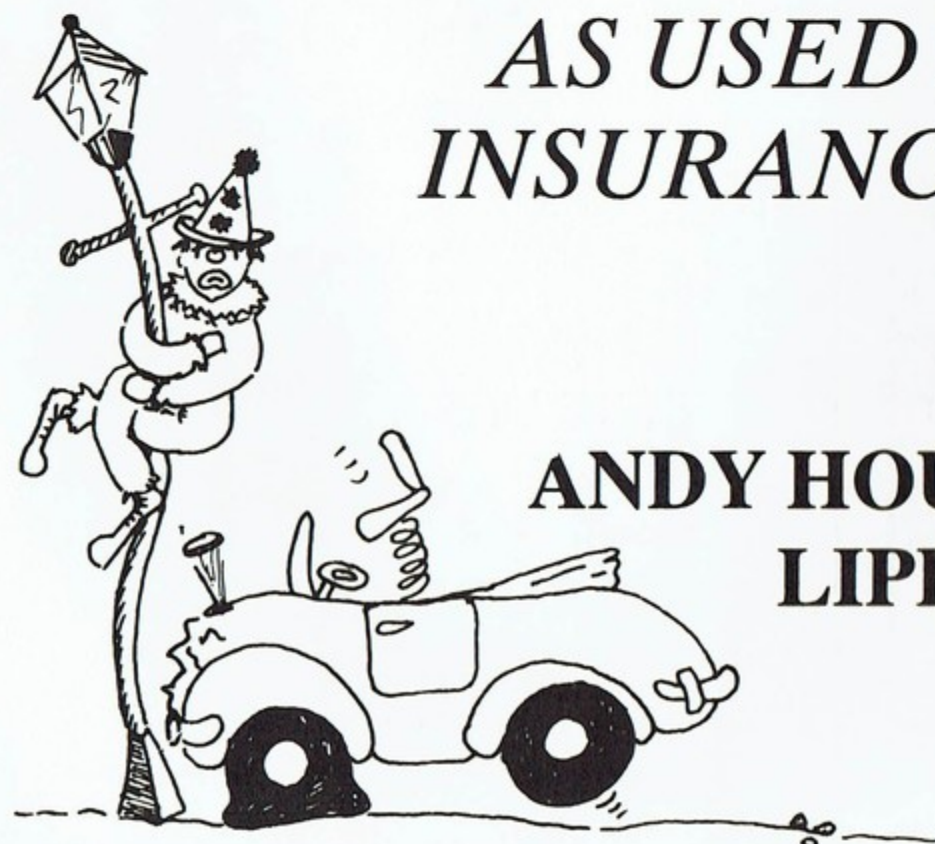
IN



ACCIDENT REPAIR SPECIALISTS

- LOW BAKE OVEN
- CAROLINER JIG
- MOT WELDING
- FREE ESTIMATES
- FREE COLLECTION & DELIVERY

*AS USED BY LEADING
INSURANCE COMPANIES*



**ANDY HOUSE —
LIPHOOK (0428) 723748**

THE WATERLOOVILLE CLUB WOULD LIKE TO THANK THE FOLLOWING SPONSORS WITHOUT
WHOSE HELP THE MEETING WOULD NOT SUCCEED:

VIP Enclosure
Berkshire Cycle Company

Electronic Office Equipment
A. Healey

Radios
Ringwood Public Address

Dust & Litter Control
Leigh Environmental

Course Spraying
Selwood Hire

Signboards
Harcros Timber & Building Supplies

Paddock Fencing
J.B. Corrie & Company

Jet Wash Area
Hi-Bar Cleaning Aids

Course Equipment
Frank Mundy

Kelly Springfield Tyre Co Ltd
Goodyear Great Britain

Payphones - B.T.

V.I.P. Refreshments
Hartridges - Smiths Crisps
Gary Hall

Hand Tools
Beaver Tool Hire

Bulldozers
O'Niell Excavators

Quads
Rafferty Newman Ltd

Mechanical Equipment
Vibro Plant

Wiring
Southern Electricity

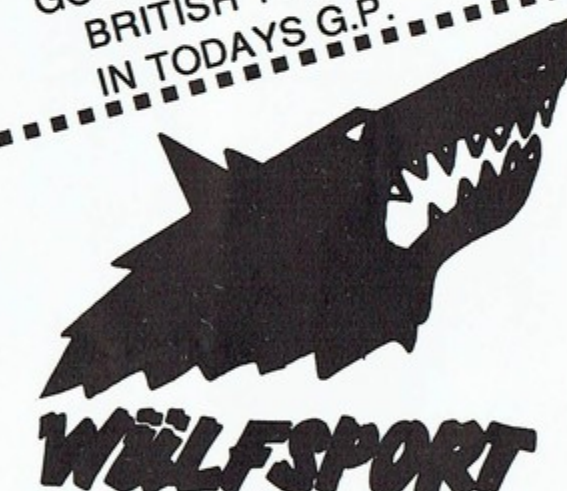
Mobile Lighting Services
Hire-a-Tool
AAA Taxis & Minibus

Financial Services
Lloyds Bank plc

**BRITAIN'S No. 1
OFF ROAD TRADE
SUPPLIER**

GOOD LUCK TO ALL
BRITISH TEAMS
IN TODAY'S G.P.

BILL BROWN
MOTOR CYCLE CENTRE
HIGH STREET
WHITEHAVEN
CUMBRIA
Telephone: 0946 692697/8
Fax: 0946 691759



ZABEL



HUSABERG
MOTOR AB · SWEDEN



MAICO



HARCROS

TVS Leigh



SMITHS

The Sidecar
Association
of Great Britain

WE RACE, YOU WIN

Paul Malin is a proven winner. So is the machine he rides. Anyone racing a Kawasaki is a winner, because the motocrosser they buy has been developed and tested at Grand Prix level, the toughest proving ground of all. Choose a Kawasaki, and win.

Being a member of Team Green Club '91 puts you ahead of the opposition with a unique Engine Protection Plan, free suspension set-up, free parts kit, certificate of ownership and regular newsletter.

Paul Malin
KX500SR



Kevin Morris
Race technician



Everyone's a Winner at Concours with Peugeot's deals on the cars you really want

You'll have noticed recently that our competitors have been offering big discounts on some of their models. Namely, those models most people don't want.

Peugeots, however, are still being bought in numbers large enough to have actually increased market share this year. In fact, some 15% better than over the same period last year.

Which just goes to show that when you offer the right cars with the right deals, you don't have to pay people to buy them.

People want Peugeots because Peugeots are drivers' cars, built and designed by enthusiasts.

Every one is a winner in international racing or rallying, in motoring press test drives and reliability trials, and above all on the road, as anyone who drives one will tell you.

To make sure you're a winner when you buy a Peugeot (and that means any Peugeot you care to choose) we've enhanced our summer offer so that now we are better able to sell you the car you want at the price you want to pay.

So before buying a car you don't want, simply to get the price you do want call in or phone our showrooms and check out exactly what we have on offer and discover for yourself why people want to drive Peugeots.



Concours
The people with the Peugeot experience!

HIGH STREET HASLEMERE
0428 652551

PEUGEOT. THE LION GOES FROM STRENGTH TO STRENGTH



LUBRICANTS



DRIVE CHAIN



ROAD RACE LEATHERS & GLOVES



FINANCE



FINANCE



HANDLEBARS & CHAINWHEELS



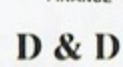
MX GOGGLES



BRAKE PADS



MX CLOTHING and PLASTICS



ROAD RACE EXHAUSTS



BRAKE HOSES



HELMETS



MX & R/RACE BOOTS



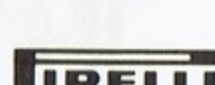
SPARK PLUGS



MX EXHAUSTS



MX SILENCERS



TYRES & TUBES



AIR FILTERS



TRANSPORTERS



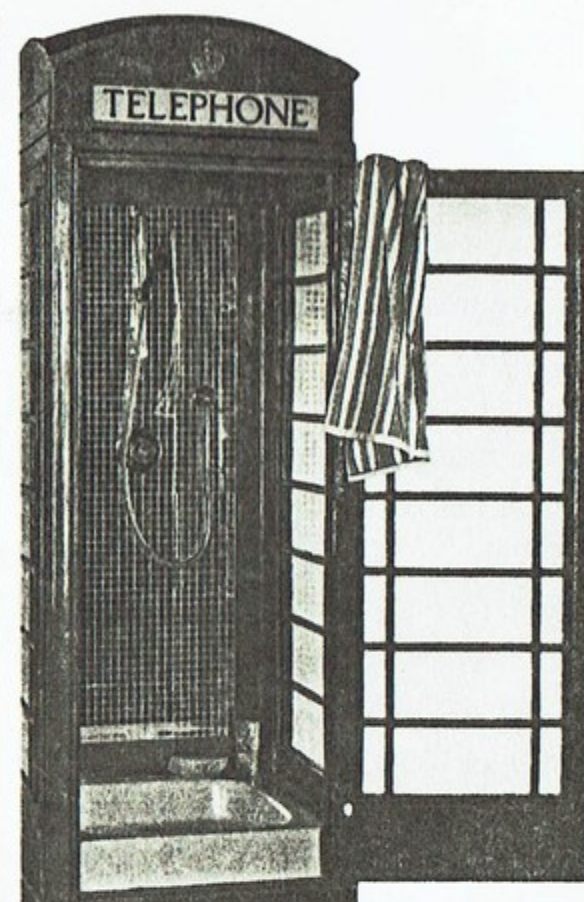
WORKSHOP MATERIALS

The products and services supplied by Team Green sponsors are used by Team Green Racing during competition. Kawasaki Motors (UK) Ltd can make no warranty as to their suitability or safety.

Now you can have it adapted to give your home unique character



▲ The most popular conversion, a cocktail cabinet, comes with a free bottle of champagne. There is plenty of room for fridge and bottle storage. Just the right height for optics.



▲ The kiosk makes a first class shower unit. This later K6 has an Elizabeth II crown.

When you ask us for your kiosk, you can have one in the most basic form or fully customised; the former is sandblasted and sprayed with two undercoats and two coats of genuine Post Office red paint (no glass).

- The drinks cabinet is a very popular version and each one is delivered with a free bottle of 1983 Bollinger champagne.
- When we adapt a 'phone booth to accommodate fish, the glass panels are replaced with 10mm armoured glass. The door is welded shut and then the inside is water-proofed with glass fibres. The roof is removable so that it can be lifted off for major cleaning operations.

Pilot Developments Ltd

Fyfield Hall, Fyfield, Nr. Ongar, Essex CM5 0SA, United Kingdom.

Telephone: National 0277 899495, International 44 277 899495. Fax: 899613.

THE WATERLOOVILLE MOTOR CYCLE CLUB welcomes you to "Manor Farm", Langrish, Hampshire - the home of the 1991 British Round of the World Side-Car Moto-Cross Championship.

There can be very few moto-cross circuits in the world, with no man made hazards. "Manor Farm", which is situated in a beautiful Hampshire Valley is the exception.

We extend a very warm welcome to our overseas and British competitors, officials and spectators and we sincerely hope you will enjoy an exciting week-end of motor cycle racing.

The Club wishes to thank friends from our local Motor Cycle Clubs, The British Red Cross, Hampshire Police, our sponsors and advertisers and Mr. PETER LAMBERT our landowner, without whose help this event could not take place.

On a personal note this is a wonderful year for me. As President of the Waterlooville Motor Cycle Club I am honoured to be associated with the dedicated and hard working members, whose enthusiasm and team work has made this all possible.

On behalf of Waterlooville Motor Cycle Club I thank you for attending this Meeting and wish you all a safe journey home.

EDDIE AUSTEN

President Waterlooville Motor Cycle Club

Today is a big landmark in the history of the Waterlooville MCC, a day to be proud of. Unfortunately the pride and pleasure that this is to all club members is tinged with a little sadness. One person to whom the WMCC meant so much, and to whom the Club owed so much, our President of many years, and ace cartoonist Jack 'Morty' Mortlock passed away before his dream came to fruition this weekend. I am sure Jack is watching over us at this event and I hope we have done his memory proud. Another face who will also be missing this year is that of Bill Turner, the father of sidecar motorcross from the early days of Bennham till last year, another sad loss but a strong memory which will remain as long as motorcross does.

GEORGE SKEATES

(Racing Manager)

At last after 53 years in existence and 18 months hard work the Waterlooville MCC welcome the cream of the World's Sidecar Crews to pit their skills against each other over the famous 'Ken Hall' course for World Honours.

A record entry of over 60 crews from Austria, Belgium, Czechoslovakia, Denmark, Finland, France, Germany, Liechestein, Netherlands, San Marino, Sweden, Switzerland, U.S.S.R., and Great Britain, will on Sunday in two groups of 'Timed Qualifying', be stretching every sinew and throttle to join the Top Six on the grid for Monday's Grand Prix.

On Monday at precisely 1 o'clock, the checking, the tuning and the practice will be over and the 30 fastest teams in the world will be hunched over revving machines awaiting the 5 second board.

Who will win? Who will make the holeshot? All our hopes must be with the best prospect of a home win for over a decade, an on form Chris Etheridge and Nick Brace 620 cc Zabel EML.

Netherlands with current World Champion Benny Janssen, passengered by Frans Geurts Van Jessel and this years leader Eimbert Timmermans and Eric Verhagen, will I am sure be a force to be reckoned with even without their home sand advantage.

A careful watch should be kept on Germany's Walter Netterscheid and Lothar Jehle duo who with France's Gilles Mecene/Eric Morgan and Eddy Ramon/Gino Strubbe from Belgium are potential podium candidates at the end of the day.

Two 30 min plus two lap races will by 5pm, definitely prove who is the best in the world on the day, so I, and I am sure you will wish all of them from wherever they come an excellent day's racing.

Backing up the Grand Prix is an excellent British Solo Entry, who will compete over three twenty minute legs, for the 'Ken Hall Trophy', youngsters Craig Pratley and Matt Bates will be hard pressed by past winners Stuart Coyle and Perry Leask, with 125cc world points scorer Matt 'Flash' Gordon, and on form Greg Hanson nudging shoulders at the front every race.

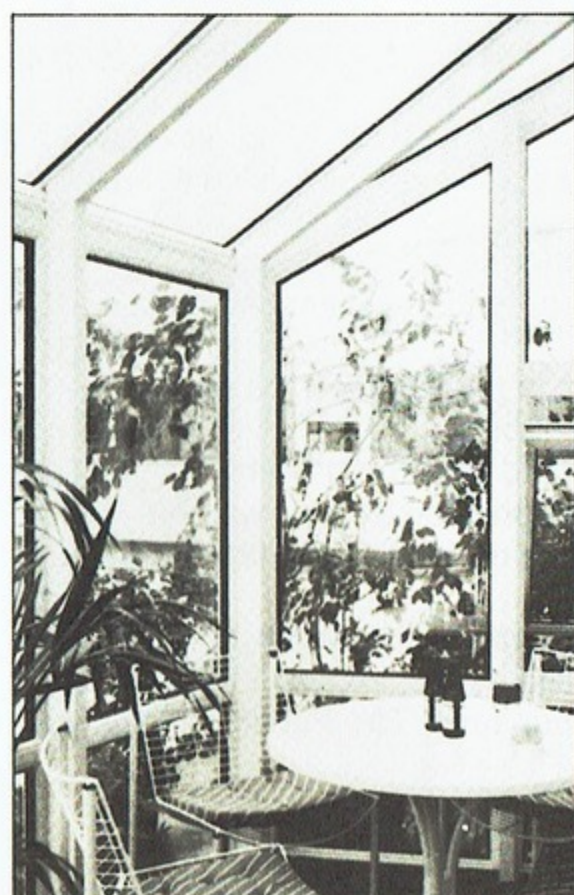
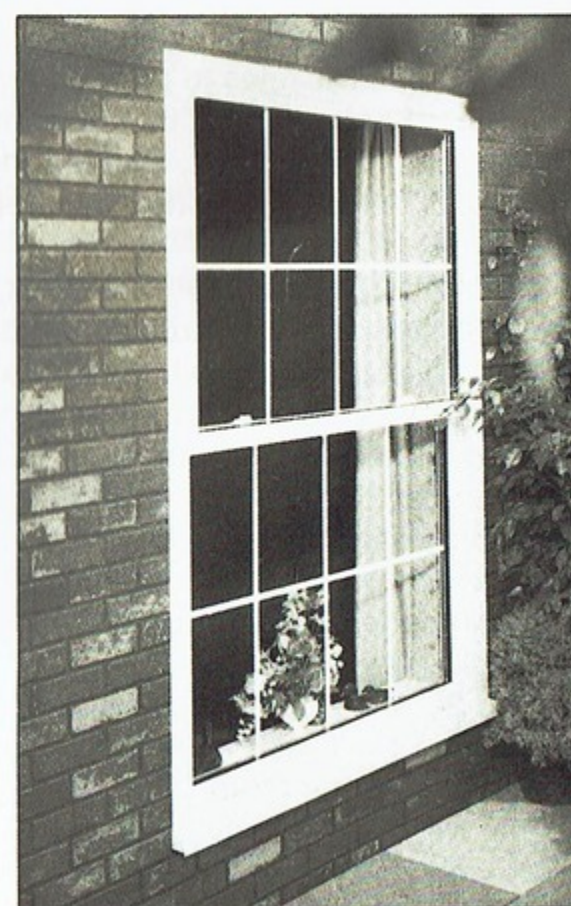
An excellent entry, a fine course, with this year no dust thanks to a fleet of tankers supplied by LEIGH ENVIRONMENTAL dispensing thousands of gallons of water into the pumps supplied by SELWOOD PLANT HIRE, should prove an excellent day for both competitors and you the backbone of our sport 'The Public'. Thank you for coming, thank you for your enthusiasm and see you next year.

ROY COLLINS

G·A·R·Y·H·A·L·L

DOUBLE GLAZED REPLACEMENT WINDOWS, DOORS AND CONSERVATORIES

2A PARK ROAD
INDUSTRIAL EST.
BLACKHILL
CONSETT
CO. DURHAM
TEL: (0207) 581638



A.P.S. SHEETMETAL (Farnborough) Ltd

Est 25 yrs

A MOLYNX HOLDINGS PLC GROUP COMPANY

PRECISION SHEET METAL WORK FOR THE ELECTRONIC INDUSTRY

ALUMINIUM STAINLESS
& MILD STEEL

SPECIALISTS IN C.C.T.V.

HOUSINGS

PROTOTYPE & BATCH
PRODUCTION

PIERCING BY PIERCE/ALL MACHINES
ARGON/ARC/CO2 WELDING

Farnborough
(0252) 548166

Fax: (0252) 377523

14 Farnborough Street, Farnborough, Hants.




Sports Trophies, Awards
Engraving

29 North Street, Emsworth
(0243) 377865
TROPHY SUPPLIER TO
WATERLOOVILLE M.C.C.

L.S. AUTO'S Motor Engineer

*Servicing
Engine Tuning
Gas Analysis
Unleaded Conversions
MOT Work
Mechanical Repairs*

For Personal Service Larry Sills

 (0705) 263658
(24 hr. Answerphone)

Baker Engineering *precision engineers*

Sub-contract machinists for Ferrous and
Non-Ferrous materials, plastics/perspex.

Facilities include:

- TURNING • DRILLING • MILLING
- GRINDING • WELDING

on production or prototype basis.

All enquiries welcome: Prompt quotation at competitive rates:

Reliable service assured

Baker Engineering, Devon Road, Bordon
Hants. GU35 0BB Tel: BORDON 473953

EAST HAMPSHIRE DISTRICT COUNCIL

Support for *Sport*

Good luck to all
Competitors in
the WORLD
SIDECAR MX
CHAMPIONSHIP
1991



BRITISH SIDECAR MOTO-CROSS GRAND PRIX Schedule/Horaire des Cours/Zeitplan

SUNDAY/DIMANCHE/SONNTAG 25-8-91

0800	- 1100	Machine Examination/Verification/Maschine-Abnahme	
1100	-	Jury Meeting/Seance de Jury/Jury Sitzung (1)	
1200	- 1300	Free Practice/l'entrainement Libre/Freies Training	Grand Prix
1315	-	Riders Meeting/Reunion des Participants/Fahrerbesprechung	
1330	- 1430	Free Practice/L'entrainement Libre/Freies Training	Grand Prix
1515	- 1600	Qualifying Practice/Essais Qualificatifs	
		Obligatoires/Qualifikations-Training	Grand Prix - Group "A"
1615	- 1700	Qualifying Practice/Essais Qualificatifs	
		Obligatoires/Qualifikations-Training	Grand Prix - Group "B"
1700	-	Jury Meeting/Seance de Jury/Jury Sitzung (2)	

MONDAY/LUNDI/MONTAG 26-8-91

0800	- 0830	Free Practice/l'entrainement Libre/Freies Training	Grand Prix
0845	- 0915	Solos Free and Time Practice	
0930	- 1030	Time Practice/Essais Chronometrage Obligatoires/Zeitpflichttraing	Grand Prix
1045	-	Jury Meeting/Seance de Jury/Jury-Sitzung (3)	
1100	-	First Solo Ken Hall Race	20 minutes plus 2 laps Support
1130	- 1200	Break/Pauze	
1200	- 1245	Riders Presentation/Presentation des Coureurs/Fahrervorstellung	Grand Prix
1300	-	First Race/Course/Lauf	30 minutes plus 2 laps Grand Prix
1345	-	Ceremony/Ceremonie/Siegerehrung	Grand Prix
1400	-	Jury Meeting/Seance de Jury/Jury-Sitzung (4)	
1400	-	Sidecar - Non Qualifiers	20 minutes plus 2 laps Support
1435	-	Second Solo Kent Hall Race	20 minutes plus 2 laps Support
1505	- 1535	Break-Pauze	
1535	-	Second Race/Course/Lauf	30 minutes plus 2 laps Grand Prix
1615	-	Ceremony/Ceremonie/Siegerehrung	Grand Prix
1625	-	Press Conference/Presconference/Presse-Kongferenz	Grand Prix
1630	-	Third Solo Kent Hall Race	20 minutes plus 2 laps Support
1650	-	Jury Meeting/Seance de Jury/Jury-Sitzung (5)	
1715	-	Prize Giving/Distribution des Prix/Auszahlung der Preisgelder	

FORD & ELLIS RACING

Main agents for
YAMAHA • KAWASAKI • SUSUKI

SPECIAL OFFER
1990 YZ250 New
£1895
FEW ONLY

SPONSORS OF GREG HANSON

Phone: 0494 785166-772343

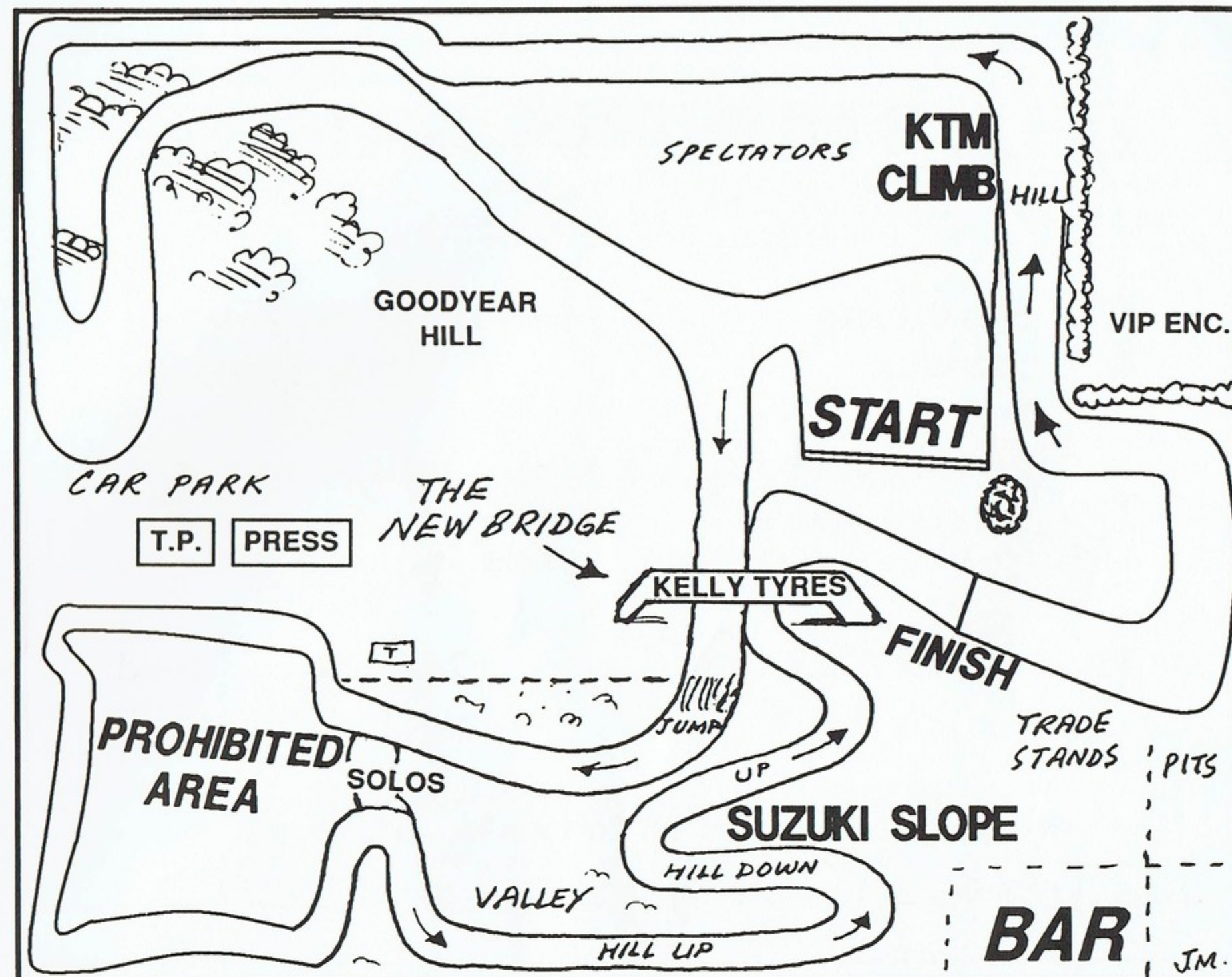


**MOTO CROSS
GRASS
TRACK
AND ROAD
SIDECARS**

**GOOD LUCK TO ALL
COMPETITORS IN
TODAYS GRAND PRIX**



**SOUTH NEWTON
SALISBURY, WILTS, ENGLAND
TELEPHONE 0722 743582 • FAX 0722 742657**



M.D. RACING PRODUCTS

DISTRIBUTING TO THE TRADE NATIONWIDE



PROLINE
SUPPORTS
SOLE UK
DISTRIBUTOR FOR
PROLINE BODY PROTECTION



TALON



**UNITS 3 & 4, 10 ARMOURY ROAD, LUFTON TRADING ESTATE,
YEOVIL, SOMERSET. TEL 0935 29646. FAX 0935 31271.**

BILL TURNERS GARAGE

Proprietors John & Mike Turner

**Car Servicing
& Repairs**

**Motorcycle Servicing
& Repairs**

Motorcycle M.O.T while you wait

Moto-cross clothing, tyres, chains etc.

Phone 0734 472647

76A Queens Road
Caversham
Reading
Berks

Wish good luck to all todays competitors



HONDA POWERED
Sid Moram's sponsored
Colin Philpott & Dave Short

MORAMS COMP SHOP
Great Deals On All

THE CR'S (regret 500's all gone)
Part ex' welcome
Wexham Road Corner
High Street
Slough
Berks Phone 0753 522720



HOT CATS IN PETERSFIELD

PEUGEOT PERFORMANCE RANGE



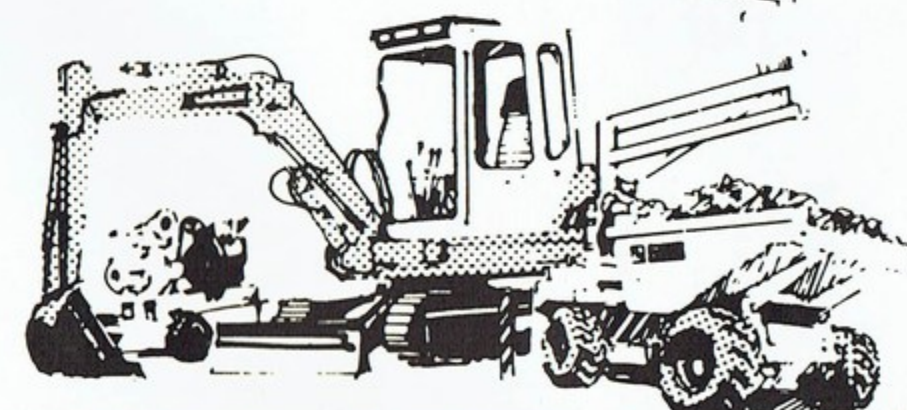
**WITH POWER
COMES RESPONSIBILITY**



WADHAM STRINGER
COLLEGE STREET, PETERSFIELD TEL: (0730) 62266

PEUGEOT. THE LION GOES FROM STRENGTH TO STRENGTH

The tools for the trade



Founded on more than 30 years' specialised experience. From dumpers to drum rollers, from plate compactors to pumps, from mixers to mini-excavators – all these and many, many more are available from Selwood. Plus all the back-up and service facilities you need to keep your equipment hard at work. Whatever your needs in plant or equipment, hire it from Selwood.

Contact: Jim Blundell
Freda Thomson

W. R. SELWOOD
Hambleton Road,
Denmead,
Portsmouth PO7 6HZ.



**Selwood
hire**



CHRIS ETHERIDGE - Driver.
NICK BRACE - Passenger

Chris after four years being runner-up to Paul Millard, this year captured the coveted British Championship in his second year with Nick 'No Hands' Brace in the chair.

Twenty Sixth in last years World Championships after two exciting rides in Switzerland with a second and a fourth race positions, managed to sample the champagne as third overall. This magnificent result lifted them to tenth in the rankings with only Finland to tackle before they arrive at Langrish, to be the first British Crew to win on home ground in more than a decade.

Keep the flags and programmes waving, lift them and they can do it.

BERNIE LEIGH

26-28 RUMBRIDGE STREET
TOTTEN
SOUTHAMPTON
SO4 4DP

Tel. (0703) 860356/863295

MOTORCYCLES

We are specialists for new and used motorcycles,
parts and accessories, MOTs, servicing and a
complete range of motorcycle clothing



Choose from our wide range of
tyres (fitted free)



HONDA

COMPLETE RANGE IN STOCK

FROM MOPEDS

TO

SUPER-BIKES

BIKE TRAINING
BOOKING CENTRE

NO DEPOSIT
NEW/USED M/C's

£2000
limit

NOW
OPEN 7
DAYS
WEEK

SPARES • ACCESSORIES • CLOTHING



FULL WORKSHOP FACILITIES



PORTSMOUTH HONDA CENTRE

NEW ROAD PORTSMOUTH

☎ 0705 828425

BENNY JANSSEN - Driver.
FRANS GEURTS VAN KESSEL -
Passenger

With number one on the plate Benny and Frans are the reigning World Champions. This likeable pair from the Netherlands who started riding in 1975, winning their home Netherlands Grand Prix at Reek in 1986 and again at Lochem in 1989.

In 1990 this Zabel EML 'BP Sponsored' duo took winning rides in Czechoslovakia, Finland, and Italy with a pair of firsts in the deep sand of their homeland finally clinching the title with a well earned fourth in the first race in Germany.

This year after an excellent start taking 40 points from two wins in France, 25 points at home in Halle's deep sand, they have failed for various reasons to score, but possibly a sea journey and a touch of Hampshire air will put them to the front again.





BEAVER TOOL HIRE

(CHICHESTER) LIMITED

BEN TURNER INDUSTRIAL ESTATE,
CHICHESTER, W. SUSSEX PO19 4ET ♦
TEL: CHICHESTER 782510

HAMBLEDON ROAD
DENMEAD, HANTS. PO7 6QA
TEL: WATERLOOVILLE 259325



WORLDCHAMPION 1990

BENNIE JANSSEN / FRANS GEURTS VAN KESSEL

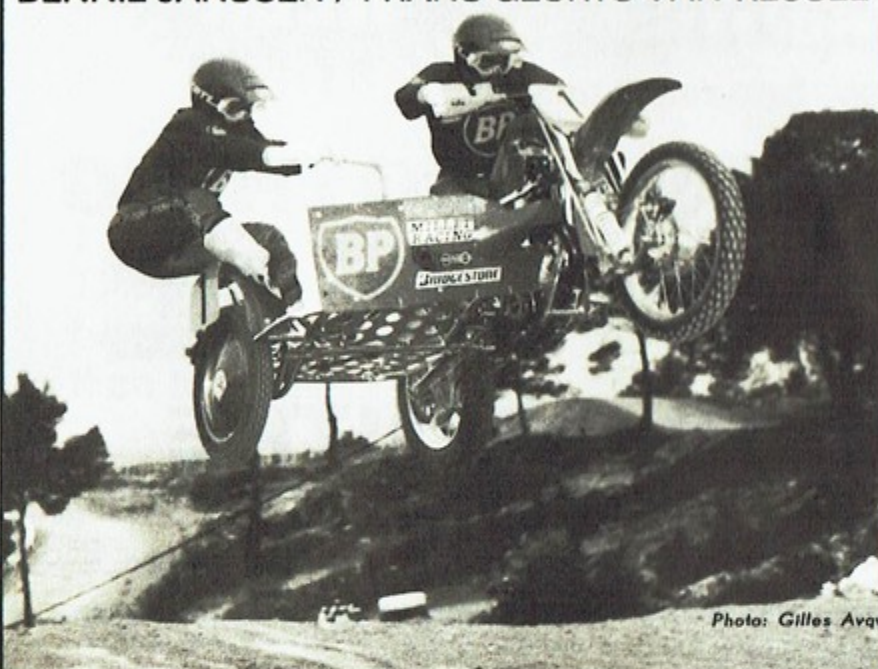


Photo: Gilles Avy

HARCROS

Timber & Building Supplies

EIMBERT TIMMERMANS - Driver
ERIC VERHAGEN - Passenger



Twenty-nine year old Eimbert with two year younger Eric in the chair after forcing their Kawasaki EML to fifth place in the 1990 World Championship with winning rides in France, and Finland with a final score of 147.

This year 25 points in France was followed by a win and a second in the deep sand of Halle Clubs Netherland's Round. One win at Betekom in Belgium, two straight wins in Portugal plus excellent scores of 30 in Germany and 28 in Switzerland have put them 27 points in the lead going to Finland.

A good result up near the Artic Circle could put him in the position to lift the '1991 Crown' here today, so look out for speed and sparks.

1991 WORLD SIDECAR CROSS CHAMPIONSHIP

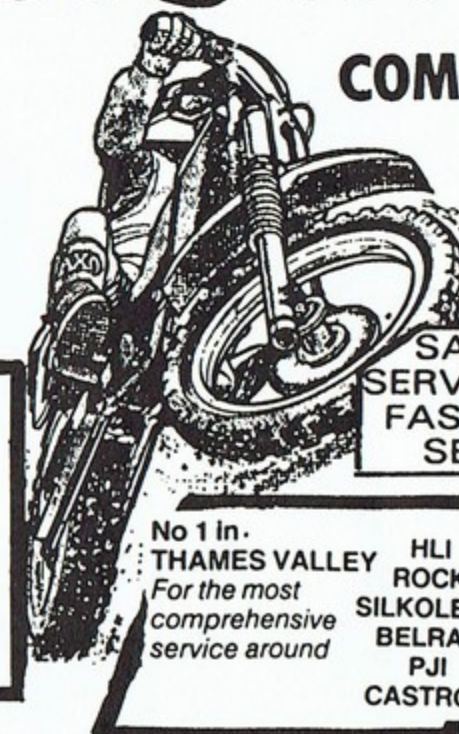
DRIVER/PASSENGER (COUREUR/PASSAGER)	F	NL	B	P	D	CH	SF	PTS
1 Timmermans/Verhagen	11/15	20/17	20/0	20/20	17/13	15/13	17/20	218
2 Ramon/Strubbe	8/10	15/20	17/13	15/17	11/9	8/10	20/13	187
3 Netterscheid/Jehle	0/0	8/11	10/8	9/10	20/20	20/15	13/17	161
4 Mecene/Morgan	17/17	7/0	13/15	11/15	10/2	11/20	11/0	149
5 Lenherr/Weber	0/0	13/15	11/17	17/13	13/11	5/11	0/0	126
6 Weinmann/Weinmann	7/9	6/0	9/11	0/8	0/15	7/9	8/10	99
7 Janssen/Guerts Van Kessel	20/20	17/8	0/0	0/0	0/0	0/0	15/15	95
8 Huesser/Kaeser	10/0	0/2	0/10	0/11	0/17	17/8	9/3	87
9 Fuhrer/Stettler	13/13	11/10	15/20	0/0	0/0	0/0	0/0	82
10 Fussenegger/Meusburger	0/4	0/0	7/3	8/0	6/10	10/4	10/9	71
11 Etheridge/Brace	9/0	0/0	0/4	0/0	15/0	13/17	0/0	58
12 Morf/Bosshard	5/5	0/1	5/5	10/0	0/0	8/0	6/8	53
13 Bens/Toonen	2/0	9/13	3/1	5/2	0/5	0/6	0/0	46
14 Nielsen/Bitsh	0/8	1/0	0/2	13/9	0/0	0/0	0/11	44
15 Bouvet/Bouvet	15/11	0/0	0/0	1/0	7/7	0/0	0/0	41
16 Goovarts/Paredaens	0/0	2/9	8/7	0/0	0/0	0/3	5/0	34
17 Roskopf/Wannersdort	0/0	0/3	0/0	0/6	3/4	4/7	7/0	34
18 Knubben/Schneider	0/0	0/0	4/9	7/5	0/6	0/0	0/0	31
19 Goelz/Rommer	0/0	0/0	0/0	0/0	9/8	6/5	0/0	28
20 Van Houston/Hurkmans	0/0	10/7	0/6	0/0	0/0	0/0	4/0	27
21 Van de Lagemaat/Lagemaat	0/6	5/5	1/0	2/0	0/0	1/0	0/2	22
22 De Vries/Visser	0/0	4/4	0/0	0/4	0/0	0/0	0/6	18
23 Picut/Sorba	4/0	0/0	0/0	6/7	0/0	0/0	0/0	17
24 Graenicher/Koepli	0/0	0/0	0/0	0/0	8/0	0/0	0/7	15
25 Bakens/de Bresser	0/0	0/0	0/0	3/0	4/1	0/2	0/5	15
26 Palsson/Davidsson	0/0	0/0	0/0	0/0	0/0	3/0	3/4	10
27 Janssen/Janssen	0/0	3/6	0/0	0/0	0/0	0/0	0/0	9
28 Vanet/Bouvet	0/7	0/0	0/0	0/0	0/0	0/0	0/0	7
29 Scerbinine/Zyrianov	0/0	0/0	6/0	0/0	0/0	0/0	0/0	6
30 Thomas/le Bouquin	6/0	0/0	0/0	0/0	0/0	0/0	0/0	6
31 Kuhn/Albrecht	0/0	0/0	0/0	0/0	5/0	0/0	0/0	5
32 Brustmann/Kirchner	0/1	0/0	0/0	4/0	0/0	0/0	0/0	5
33 Priadeine/Zavianov	0/2	0/0	2/0	0/0	1/0	0/0	0/0	5
34 Devoldere/Devoldere	0/0	0/0	0/0	0/3	0/0	0/0	1/0	4
35 Boaler/Zimmermann	0/0	0/0	0/0	0/0	2/0	0/0	2/0	4
36 Novotny/Simunek	0/0	0/0	0/0	0/0	0/3	0/0	0/0	3
37 Barat/Bellaud	0/3	0/0	0/0	0/0	0/0	0/0	0/0	3
38 Herren/Schlaepfer	3/0	0/0	0/0	0/0	0/0	0/0	0/0	3
39 Klotz	0/0	0/0	0/0	0/0	0/0	2/1	0/0	3
40 Laitinen/Danmert	0/0	0/0	0/0	0/0	0/0	0/0	0/1	1
41 Macek/Dobias	0/0	0/0	0/0	0/1	0/0	0/0	0/0	1
42 Morgan/Rostaingt	1/0	0/0	0/0	0/0	0/0	0/0	0/0	1

PEGASUS OFF ROAD

Specialist Services
Engine Rebuilds
Shock Overhauls
Race Preparation
Fast Crank and
Rebore Service

COMPETITION PARTS

KAWASAKI - SUZUKI
HONDA - YAMAHA
KTM - MAICO
HUSQVARNA



**SAME DAY DESPATCH
SERVICE • TRADE & RETAIL
FAST POST • SECURICOR
SERVICE — Telephone**

ARAI
BELL
MDS
AXO
SCOTT
FRESCO
ACERBIS

SINSALO
HALLMAN
YOKO
O'NEAL
CLOVER.

No 1 in
THAMES VALLEY
For the most
comprehensive
service around

HLI
ROCK
SILKOLINE
BELRAY
PJI
CASTROL

HOURS OF BUSINESS:
Mon - Sat
9 am - 6 pm

**107 Catherine Street
Reading**

(0734) 585909 & (0836) 763903

**24
HOUR
SERVICE**

A-A-A TAXIS

& PRIVATE HIRE CARS

STILL ONE OF THE CHEAPEST IN TOWN

PORTSMOUTH
730073

* MINIBUSES * WEDDINGS
* LONG DISTANCE WORK - AIRPORTS ETC
10-12 QUEENS ROAD, PORTSMOUTH

PORTSMOUTH
829202

**24
HOUR
SERVICE**

BRITISH MOTOCROSS

NO	DRIVER/PASSENGER	COUNTRY	FED	MACHINE	RACE 1		RACE 2		RACE 3		TOTAL
					Pos	Points	Pos	Points	Pos	Points	
1	BENNY JANSSEN FRANS GEURTS VAN KESSEL	Netherlands	KNMV	ZABEL EML							
2	MICHAEL GARHAMMER RALF HAAS	Germany	OMK	MAICO MTT EML							
3	ANDREAS FUHRER HANS-RUDOLF STETTLER	Czechoslovakia	FMS	KAWASAKI VMC							
4	WALTER NETTERSCHNEID LOTHAR JEHL	Germany	OMK	ZABEL EML	2	17	2	17			34
5	EIMBERT TIMMERMANS ERIC VERHAGEN	Netherlands	KNMV	KAWASAKI EML							
6	KLAUS WEINMANN THOMAS WEINMANN	Germany	ONK	KTM EML							
7	ANDI LENHERR REINHARD WEBER	Finland	LMV	KAWASAKI EML							
8	EDDY RAMON GINO STRUBBE	Belgium	FMB	KTM EML							
9	PARMO NIELSEN JORGEN BITSCH	Denmark	DMU	ZABEL EML							
10	HUGO DE VRIES ANDRE VISSER	Netherlands	KNMV	ZABEL VMC							
11	MARCO BENS ERIK TOONEN	Netherlands	KNMW	ZABEL VMC							
12	GILLES MECENE ERIC MORGAN	France	FFM	KAWASAKI	1	20	1	20			40
13	TEO MORF EMIL BOSSHARD	Czechoslovakia	FMS	HONDA VMC							
14	JOSEF BRUSTMANN WERNER KIRCHNER	Germany	OMK	KTM	3						
16	ALAIN BOUVET FABIEN BOUVET	France	FFM	KAWASAKI							
17	DIRK VAN DE LAGEMAAT ROGER VAN DE LAGEMAAT	Netherlands	KNMV	HONDA EML							
18	J. PAUL THOMAS MARC LE BOUQUIN	France	FFM	HONDA VMC							
19	CHRISTOPH HUESSER ADRIAN KAESER	Czechoslovakia	FMS	KTM							
20	DICK VAN HEUSTEN SIES HURKMANS	Netherlands	KNMV	KTM EML							
21	KARL FUSSENEGGER JOSEF MEUSBURGER	Austria	OEAMTC	KAWASAKI EML							
22	GEORG ROSSKOPF MARTIN WANNERSDORFER	Germany	OMK	KTM EML							
23	HANS-RUDOLF HERREN HANS-RUDOLF SCHLAEPFER	Czechoslovakia	FMS	HONDA EMC							
24	JURGEN KNUBBEN PETER SCHNEIDER	Germany	OMK	ZABEL EML							
25	JAN BAKENS HARRY DE BRESSER	Netherlands	KNMV	KTM EML							
26	CHRIS ETHERIDGE NICK BRACE	Great Britain	ACU	ZABEL EML							
27	HANS NILSSON CONNY JOHANSSON	Sweden	SVEMO	HONDA VMC							
29	CHARLES PICUT LUC SORBA	France	FFM	HONDA EML							
30	MAGNUS LARSSON MATS GUNNARSSON	Sweden	SVEMO	KTM							
31	MATS PALSSON LEIF DAIDSSON	Sweden	SVEMO	KTM							
32	GILLIAN VANET BRUNO BOUVET	France	FFM	BGV							

SIDECAR GRAND PRIX

NO	DRIVER/PASSENGER	COUNTRY	FED	MACHINE	RACE 1		RACE 2		RACE 3	
					Pos	Points	Pos	Points	Pos	Points
33	CONNY STRANBERG CONNY JOHANSSON	Sweden	SVEMO	ZABEL EML						
34	GERTON KOPS PIERRE VAN DER VENN	Netherlands	KNMV	ZABEL EML						
38	GEERT DEVOLDERE GILBERT DEVOLDERE	Belgium	FMB	KAWASAKI						
40	JOSEF NOVOTNY ANTONIN SIMUNEK	C.S.S.R.	CSMF	KTM						
41	DANNY NUSSLY ROGER MAURER	Czechoslovakia	FMS							
45	HANS GRAENICHER DANIEL KOEPLI	Czechoslovakia	FMS	ZABEL EML						
49	COLIN PHILPOTT DAVE SHORT	Great Britain	ACU	HONDA EML						
50	SHAUN MALLOWS SHANE SKEATES	Great Britain	ACU	KTM EML						
51	PETER CLARK JOHN CHAMBERS	Great Britain	ACU	ZABEL						
52	STUART BROWN JASON PETERS	Great Britain	ACU	KAWASAKI						
53	GEORGE LOCKLEY GEOFF WRIGHT	Great Britain	ACU	ZABEL						
54	TREVOR HOLLISTER KEVIN HOLLISTER	Great Britain	ACU	KTM EML						
55	GEOFF HAND MIKE TURNER	Great Britain	ACU	MAICO						
56	WOLFGANG KUHN BERND ALBRECHT	Germany	OMK	ZABEL EML						
57	ARMIN BOHLER JOCHEN ZIMMERMANN	Germany	OMK	ZABEL EML						
58	VLADIMIR VODENKA MILAN TASKA	C.S.S.R.	CSMF	KAWASAKI						
59	JIRI MACEK KAREL DOBIAS	C.S.S.R.	CSMF	KTM						
60	JOSEF PETAK EMIL BOUKAL	C.S.S.R.	CSMF	HONDA						
61	WALTER KALIN BRUNO KAELEN	San Marino	FSM	KTM EML						
62	RIK DEPREZ JOHAN DEPREZ	Belgium	FMB	KAWASAKI EML						
63	LUC DESCHEEMAEKER ANDRE GODSCHALK	Belgium	FMB	HONDA VMC						
64	GUNTER GOOVAERTS BERT PAREDAENS	Belgium	FMB	KTM EML						
65	GASTON VAES PASCAL SUTHERLAND	Belgium	FMB	KTM EML						
66	SERGUEI SCERBININE SERGUEI ZYRIANOV	USSR	MFSU	KTM						
67	VASIL PRIADEINE ANDREI ZAVIALOV	USSR	MSFU	URAL KTM						
68	CLAUDIO PEER FLURIN PEER	Czechoslovakia	FMS	KTM VMC						
69	DAVID BARAT SEBASTIEN BELLAUD	France	FFM	KAWASAKI EML						
70	FRANCK MORGAN PASCAL ROSTAINGT	France	FFM	KAWASAKI EML						
71	BETRAM MARTIN GEBHARD STADELMANN	Austria	OEAMTC	KTM EML						

WMS
BUILDING SUPPLIES

FRANK MUNDY

W. Mundy & Son

26 Eastsands, Burbage, Marlborough, Wilts SN8 3AN
Telephone: (0672) 810416 Fax: (0672) 810077

WMS
BUILDING SUPPLIES

1976

1991

Berkshire Cycle Co.

**CYCLES YOU KNOW AT DISCOUNT PRICES
FROM THE DEALERS YOU CAN TRUST**

OUR PRICE PROMISE!

IF YOU CAN BUY IT CHEAPER
LOCALLY FROM ANOTHER
DEALER WITHIN SEVEN DAYS
OF PURCHASE - WE'LL
REFUND THE DIFFERENCE -
GUARANTEED!



OVER 2000 NEW CYCLES ALWAYS IN STOCK

READING and CROWTHORNE — OPEN SUNDAY 10am-4pm

HIGH ST. CROWTHORNE
CROWTHORNE
(0344) 774520

18-20 WOKINGHAM
ROAD, READING
READING (0734) 661799

385 READING ROAD,
WINNERSH
READING (0734) 790797

LIGHTWEIGHT &
TOURING DEPT.
READING (0734) 667171

NOTICE TO PUBLIC

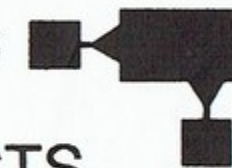
This Event is being held on private property and you are strictly forbidden to cause damage in any way.

Spectators are forbidden on the Course or in the Competitors Paddock or to proceed beyond the spectator area.

Persons ignoring the Course Marshals do so at their own risk. The Promotors do not accept responsibility from any accident arising therefrom.



DATUM 0705 592505



**RECYCLED PAPER PRODUCTS
& PRINTING**

**Prices Competitive with Non-Recycled Products
WHY USE PAPER ONLY ONCE?**

USE RECYCLED PRODUCTS FOR

- ✓ CIRCULARS & LEAFLETS
- ✓ WRITING PAPER
- ✓ NOTE PADS
- ✓ CARDS
- ✓ ENVELOPES
- ✓ COMPUTER PAPER
- ✓ PHOTOCOPYING
- ✓ JOB SHEETS
- ✓ BAGS
- ✓ WRAPPING PAPER
- ✓ PLATES & CUPS

WHY RECYCLED PAPER?

- ★ Less ENERGY used
- ★ Less LANDFILLING
- ★ Less INCINERATION
- ★ Less Intensive CONIFER PLANTATIONS

Why not telephone or call at our factory and see what we can do for you?

DATUM DESIGN 7 HILLSIDE INDUSTRIAL ESTATE
LONDON ROAD, HORNDEAN, HAMPSHIRE, PO8 0BL

Tel: HORNDEAN (0705) 592505 FAX: HORNDEAN (0705) 592569

SIDECAR MOTORCROSS CHAMPIONS

EUROPEAN CHAMPIONS

- | | | | |
|------|---------------------------------------|----|--------------|
| 1971 | Rikus Lubbers/Bart Notten | NL | Norton Wasp |
| 1972 | Robert Clogg/Gerhard Matinez | CH | Norton Wasp |
| 1973 | Lorenz Haller/Samuel Haller | CH | Honda SPP |
| 1974 | Robert Clogg/Andreas Grabner | CH | Norton Wasp |
| 1975 | Ton van Heugten/
Dick Steenbergen | NL | Yamaha Hagon |
| 1976 | Robert Clogg/Andreas Hüsser | CH | Norton Wasp |
| 1977 | Robert Clogg/Andreas Hüsser | CH | Norton Wasp |
| 1978 | Robert Clogg/Andreas Hüsser | CH | Norton Wasp |
| 1979 | Emil Bollhalder/
Roland Bollhalder | CH | Yamaha EML |

WORLD CHAMPIONS

- | | | | |
|------|---|----|-------------|
| 1980 | Reinhard Böhrer/
Siegfried Müller | D | Yamaha Wasp |
| 1981 | Ton van Heugten/Frits Kiggen | NL | Yamaha Wasp |
| 1982 | Emil Bollhalder/Karl Büsser | CH | Yamaha EML |
| 1983 | Emil Bollhalder/Karl Büsser | CH | Yamaha EML |
| 1984 | Hansi Bächtold/Fritz Füss | CH | Jumbo EML |
| 1985 | Hansi Bächtold/Fritz Füss | CH | Jumbo EML |
| 1986 | Hansi Bächtold/Fritz Füss | CH | Jumbo EML |
| 1987 | Hansi Bächtold/Fritz Füss | CH | Jumbo EML |
| 1988 | Christoph Hüsser/
Andreas Hüsser | CH | KTM-VMC |
| 1989 | Christoph Hüsser/
Andreas Hüsser | CH | KTM-VMC |
| 1990 | Benny Janssen/
Frans Geurts van Kessel | NL | Honda-EML |

NOTICE TO DOG OWNERS

In the interest of safety, all dogs must be ON A LEAD and stay under control at all times.

DELTA

Motocross

EML OUTFITS

AVAILABLE FROM STOCK
MINI JUMBO FRAME KITS
READY BUILT OR IN KIT FORM.

THE UK'S
LEADING
SIDECARCROSS
DEALER



CONTACT THE CHAIRMEN . . . RAY & PAUL AND LET THEM OUTFIT YOU

ANYTHING TAKEN IN PART EXCHANGE
SECONDHAND OUTFITS IN STOCK, REBUILDS & TECHNICAL SET-UPS

WORLD

KTM

MOTOCROSS CHAMPIONS

UK'S LARGEST

VMC & EML Stockist

SIDECAR CROSS ENGINE CONVERSIONS

KTM - 610 - 580 - 540

ZABEL 620 - 645

HONDA 550

KAWASAKI 540

OFFICIAL WHITEPOWER & OHLIN AGENT

75-77 St. Leonard's Road, Windsor, Berks
Tel: (0753) 855824/855235

Leigh Environmental

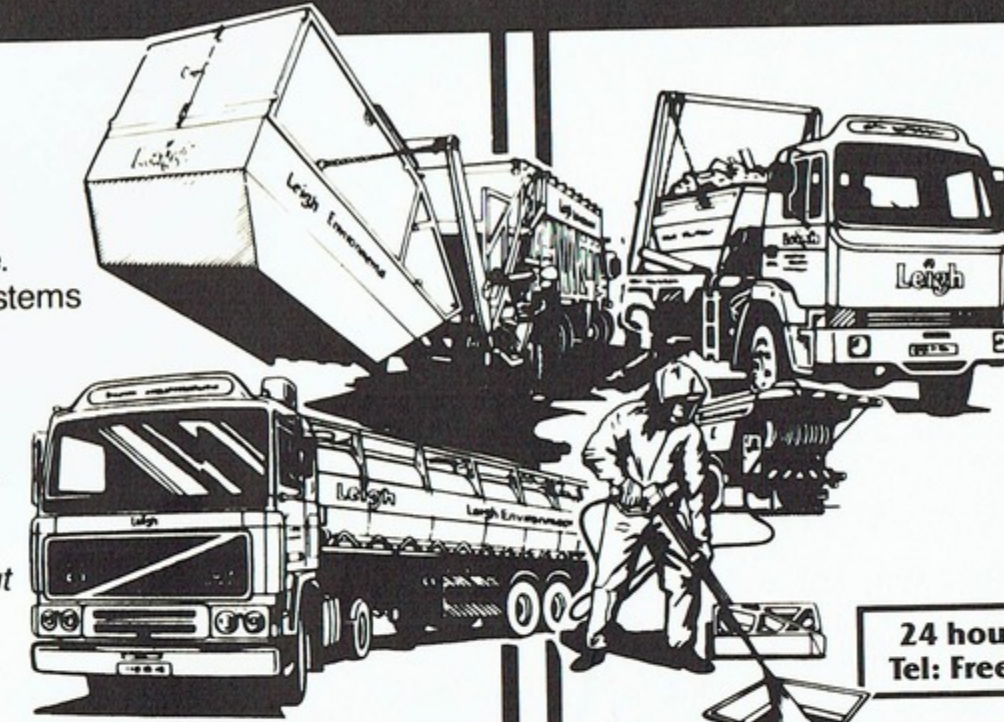
Let Leigh Share Your 'Duty of Care'

F. Hughes CONTAINER SERVICE LTD

Dry Waste

Skip Hire for -
Domestic, Industrial
& Commercial Waste.
Also Compaction Systems

- Free Appraisal
- Quick Efficient Removal Service
- Complete Range of Equipment
- Reassurance About Safe Disposal
- Local Waste Centre Network



Wet Waste

A Complete Waste Disposal, Industrial Decontamination & Cleaning Service

- Wet Waste
- Toxic & Non Toxic Effluents & Sludges
- Licensed Facilities

24 hour Emergency Service
Tel: Freephone (0800) 626274

Tel: Portsmouth (0705) 662218

Fax: (0705) 664472

Leigh Environmental Ltd., Dundas Spur, Dundas Lane,
Copnor, Portsmouth, Hants. PO3 5NY.

Tel: Portsmouth (0705) 671673

Fax: (0705) 650854

Leigh Environmental Ltd., Dundas Spur, Dundas Lane,
Copnor, Portsmouth, Hants. PO3 5NY.

TVS

JOHN ELLIOTT
QUAD RACING

0734
576691

0836
245626

SUZUKI QUADS
E.M.L.
YAMAHA

RACING QUADS, PLEASURE QUADS
ADULT QUADS, YOUTH QUADS,
LADIES QUADS, FARM QUADS
50cc up to 500cc

Join this fast growing sport of Quad racing

WASP CONVERSION KITS

Convert your trike to a quad. Available soon. Give us a Call!

JOHN ELLIOTT

No 1 Quad Dealer and Racer

Yamaha and Suzuki Agent. Phone for details of
Quads, clothing and Cobra Quad Club.

81 RUSSEL ST., READING, BERKS

BT



BT



TVS

1991 KEN HALL

SOLO TROPHY

SOLO SUPPORTING RESULTS

1st Leg - Race 1 - 20 min. plus 2 laps

1st	2nd	3rd	4th	5th
6th	7th	8th	9th	10th
11th	12th	13th	14th	15th

2nd Leg - Race 4 - 20 min. plus 2 laps

1st	2nd	3rd	4th	5th
6th	7th	8th	9th	10th
11th	12th	13th	14th	15th

No	Name	Entrant	Machine Home	Town
1	James Marsh		Kawasaki 500	Lyndhurst
2	Jason Morris	Vic Eastwood M/c's	Honda 500	Barnham
3	David Campbell	Micky Oates M/c's	Honda 250	Ayr
4	Steven McMillan		Honda 250	Eccleshall
5	Tim Wheeler		KTM 250	W-U-Edge
6	Stuart Coyle	Regent M/X	Honda 500	Builth Wells
7	Gary Hughes	Hanham M/c's	Honda 250	Wimborne
8	Steven Holmes	Silkolene Honda	Honda 250	Swansea
9	Paul Cooper	Husky Sport	Husqvarna 250	Bracknell
10	Jason Hewitt		Honda 250	Stourbridge
11	Rikki Priest	Cradley Kawasaki	Kawasaki 250	Stourbridge
12	Chris McMillan	Helyar M/c's	Honda 250	Ferndown
14	Jason Smyth	CGH M/X	Honda 250	Topsham
15	Craig Pratley	Silkolene Honda	Honda 250	Finstock
16	Ryan Hunt	Castrol Suzuki	Suzuki 250	Dunstable
17	Mark Bennett	Suzuki G.B.	Suzuki 250	Abingdon
18	Matthew Bates	Mitsui-Yamaha	Yamaha 250	Bracknell
19	Rob Wilkinson		KTM 500	Denmead
20	Barry Johnson	Castrol Suzuki	Suzuki 250	Halesowen
21	Lee Morrison	Castrol Suzuki	Suzuki 250	Milton Keynes
22	Matthew Gordon	Sherwood M/c's	Honda 250	West Midlands
23	Jason Higgs		Honda 250/500	Guildford
24	Matthew Harvey	Mitsui-Yamaha	Yamaha 250	Ipswich
25	Perry Leask	CCM (Britain) Ltd	CCM 500	Crawley
26	Rob Meek	TRM Racing	Honda 250	Gunthorpe
27	Lee King	Bill Brown M/c's	Husaberg 500	Chippenham
28	Lewis King		Honda	Abingdon
29	Greg Hanson	Ford & Ellis M/c's	Kawasaki 500	High Wycombe
30	Russell Jarman	KTM GB	KTM 300	Egham
31	Neil Prince		Honda 250	Wrexham
32	Gary Wingett		Honda 250	Calmore
33	Daniel Smith	Dymond Engineering	Kawasaki 500	Barnstaple
34	Alan Morrison	Silkolene Honda Britain	Honda 250	Killyleagh
35	Mark Broadbelt	Bikesport	Honda 500	Boroughbridge
36	Stevem Helyar	Des Helyar M/c's	Honda 500	Tadley
37	Lance Marshall		Honda 500	Wrotham
38	Julian Rawson	Castrol Suzuki	Suzuki 250	Bedford
39	Paul Chambers		Honda 250	Co. Derry
40	Dai Smith		Honda 250	Pontypool
41	Scott Wilkinson		KTM 500	Denmead

3rd Leg - Race 6 - 20 min. plus 2 laps

1st	2nd	3rd	4th	5th
6th	7th	8th	9th	10th
11th	12th	13th	14th	15th

OVERALL WINNER

1st	2nd	3rd
-----------	-----------	-----------

Reserves

42	Sean Cook	Honda 250/500	Alton
43	Simon Eyres	Kawasaki 250	Waterlooville
44	Yan Dixon	Kawasaki 500	Haywards Hth
45	Keith Rice	Honda 250	Canvey Island
46	Trevor Pope	Kawasaki 500	Waterlooville
47	Fred Sparkes	Honda 500	S. Courtney
48	Neil Spencer	Kawasaki 500	Fleet
49	Howard Standfield	Honda 500	Stockbridge
50	Leigh Williams	KTM 300	Bridgewater
51	Eddy Down	Cagiva 250	Denmead
52	Sean Giles	Honda 500	Clanfield

NOTICE TO RIDERS

Your attention is drawn to the serious consequences which could arise following an accident caused by unauthorised riding in the paddock. Liability for any claim could rest with the owner of the machine being used (or the parents in the case of a minor).



DES HELYAR

motorcycles

THE FORGE GARAGE, PAMBER HEATH ROAD, TADLEY, HAMPSHIRE

Telephone: (0734) 700665

OFFICIAL MAIN AGENTS
MOTO-CROSS & OFF ROAD SPECIALISTS
(Other makes also catered for)



100% SPARES STOCKISTS
HONDA & SUZUKI
SAME DAY PARTS DESPATCH



LARGE SELECTION OF NEW &
USED MOTORCYCLES ALWAYS
IN STOCK! (FINANCE AVAILABLE)

FULL RANGE OF MOTO-CROSS GOODIES
JT - AXO - OAKLEY - ARAI - SISI - M ROBERT - YOKO - TACKLA - TALON - HALLMAN - CLOVER
TECHNOSEL - ASCERBIS - SCOTT - GECAL - JONES - PREXPORT
SUZUKI RM250 EXCHANGE BARRELS AVAILABLE

SEE US ON STAND 2 TODAY

WHITE POWER SUSPENSION SERVICE CENTRE
FULL SERVICING - REBORES - CRANKS - WELDING - WHEEL BUILDING
YOU NAME IT WE DO IT

JUST FIND US ON THE A 340 - 6 MILES NORTH OF BASINGSTOKE

NGK - D.I.D. - IRIS - REGINA - RENTHAL - FINNA FILTERS - TWIN AIR - WHITE POWER - EBC

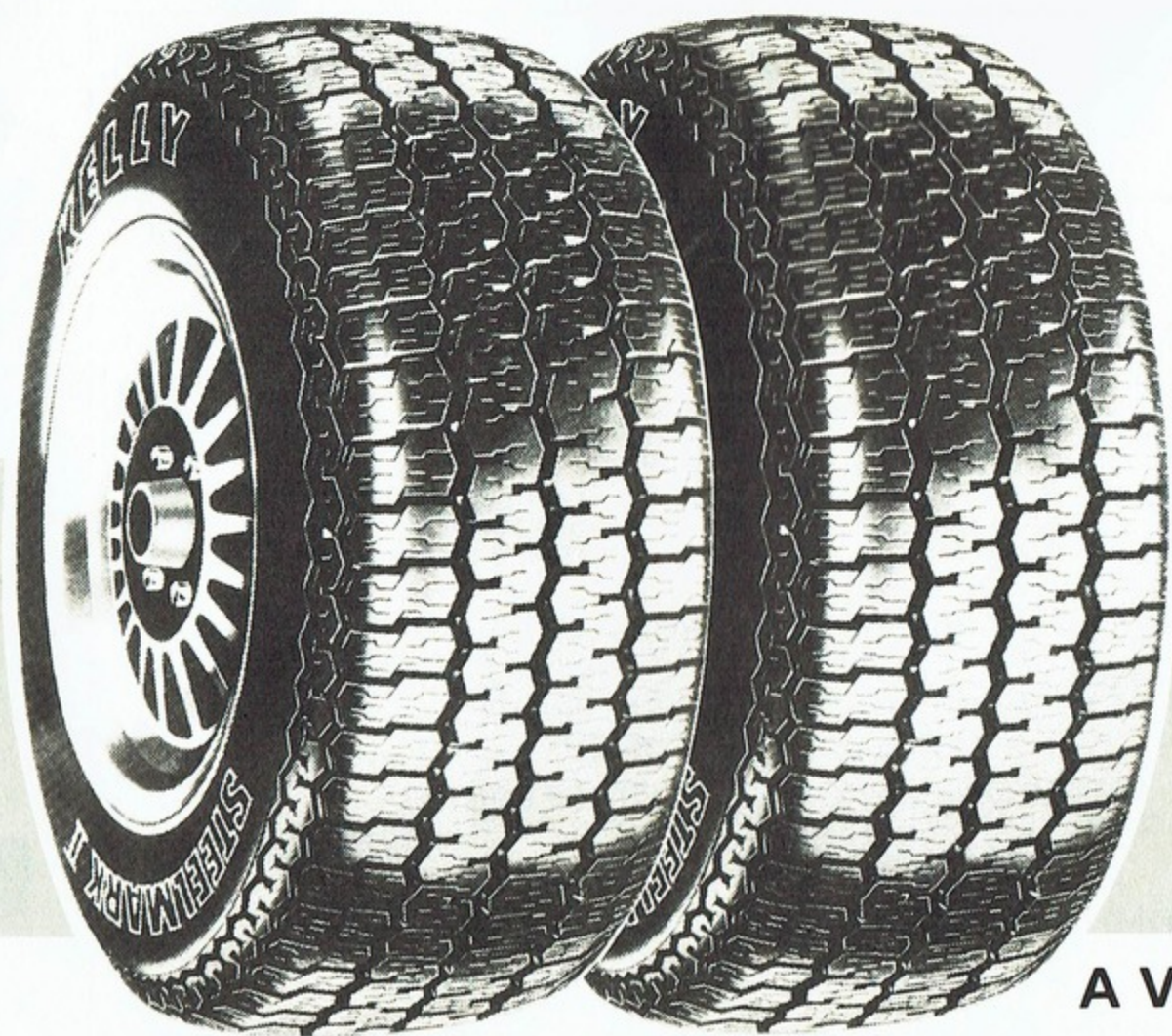
CASTROL - SILKOLENE - ROCK OIL

PULONE - DUNLOP - PIRELLI

TVS



**THE TYRE
WHICH PROVED
TO BE
ALL-ROUND
BETTER VALUE**



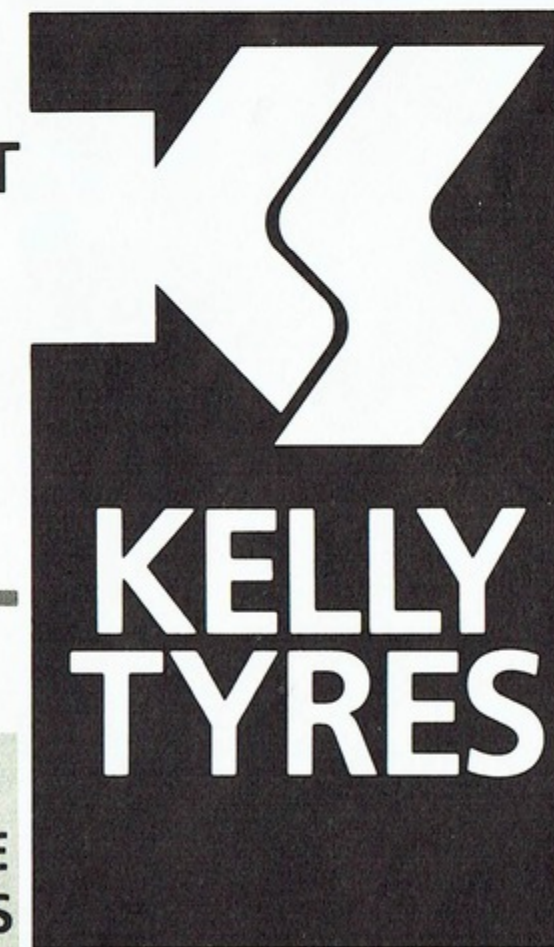
AVAILABLE · FROM · MOST · REPUTABLE · TYRE · DEALERS

KELLY

AS ACTIVE SUPPORTERS OF MOTOR-SPORT KELLY TYRES ARE DELIGHTED TO BE INVOLVED WITH THE BRITISH SIDE-CAR CROSS GRAND PRIX. WE KNOW ALL ABOUT COMPETITIVENESS—OUR RANGE OF TOP QUALITY TYRES REPRESENT THE BEST VALUE ON THE MARKET TODAY.

FOR THE NAME AND ADDRESS OF YOUR NEAREST KELLY STOCKISTS CALL US FREE-OF-CHARGE ON

0800 622581



A LEADING CONSUMER MAGAZINE RECOMMENDS THE KELLY STEELMARK II AS THE BEST VALUE TYRE AVAILABLE WHEN TESTED AGAINST THE COMPETITION FOR PERFORMANCE ON DRY ROADS, WET ROADS, SNOW, ICE, COMFORT AND MILEAGE.

YAMAHA

KAWASAKI

SUZUKI

HONDA

VESPA

SPARES

REBUILDS

PISTONS

REBORES

CRANKS

G.D. Brown Motorcycles

Haslemere Motorcycles



**MOTO-CROSS
AND ENDURO
PARTS.**

ATC SPECIALISTS.

**MOT and servicing 6 days a
week.**

*Next day delivery on parts moto-cross
and road.*

G.D. Brown Motorcycles
12 Meadrow,
Godalming, Surrey,
GU7 3HN.
Tel: (0483) 416969

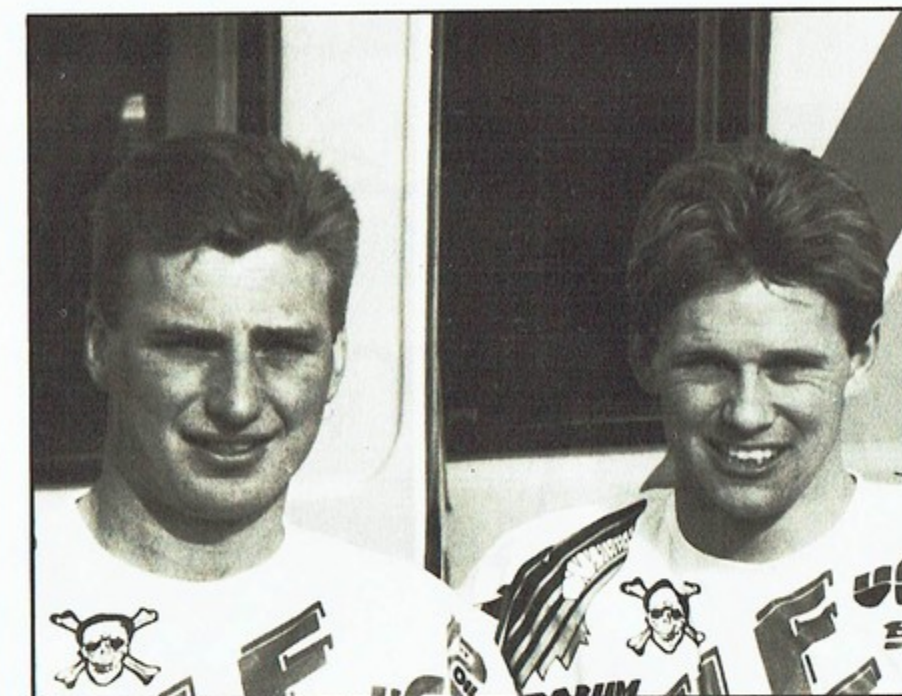


Wheel Sport Ltd

Haslemere Motorcycles
11-13 Weyhill,
Haslemere, Surrey,
GU27 1BZ.
Tel: (0428) 651580

SHAUN MALLOWS - Driver

SHANE SKEATES - Passenger



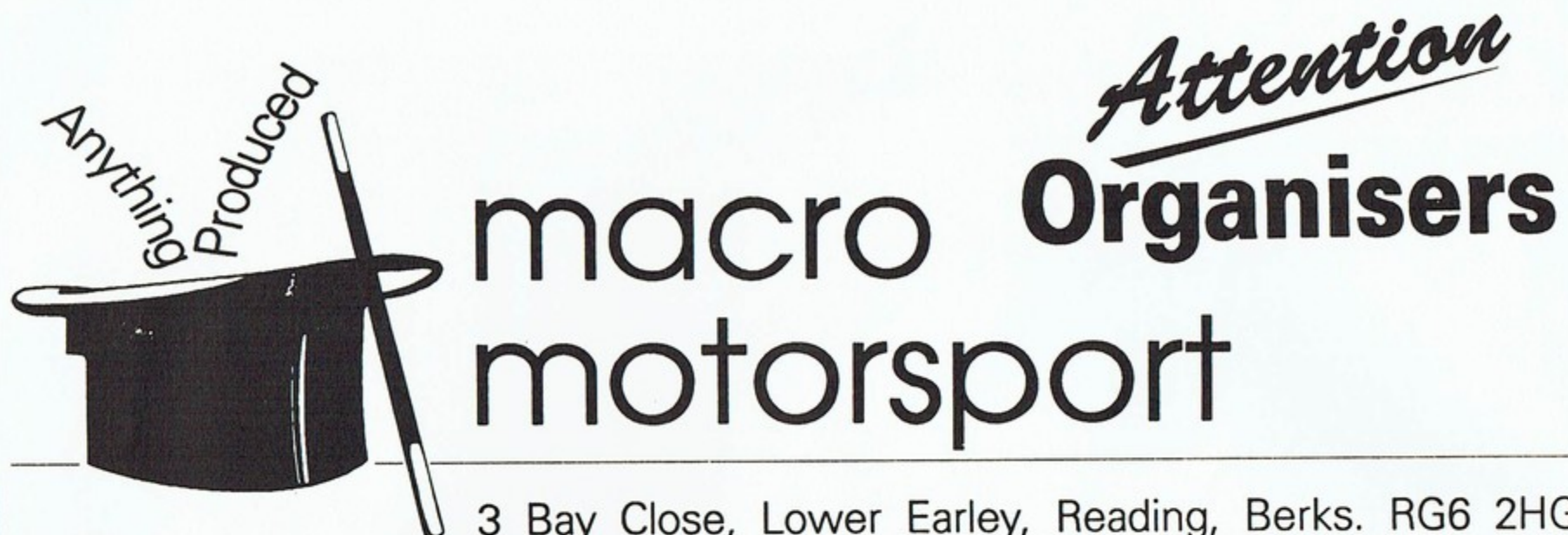
Britain's biggest threat to Chris Etheridge and Nick Brace in gaining a podium place today. Shaun from Tiptree in Essex teamed up with Shane two years ago and have been constant winners in British Championships, and with a little better mechanical luck could have edged Chris from the top spot. Shane Skeates younger brother of exBritish Champion and WMCC Racing Manager, George Skeates, has now matured as one of our best balancers of the spare wheel, and will with Shaun's determined driving give all of you reason to cheer as they thrash their KTM EML round for what we hope is their best ride ever.

**MEETEN
& WARD**



Genuine
Yamaha Parts
WE STOCK IT!

360 KINGSTON ROAD, EWELL, SURREY
Tel: 081-393-5193/2840 Fax: 081-786-8188



3 Bay Close, Lower Earley, Reading, Berks. RG6 2HG

There is really only *one* place to go for *all* your event needs — Macro Motorsport.

As suppliers of equipment to all levels of motorsport we are experienced in providing just what you need for the right price.

Ring **Paul Crossley** on **0734-755821** to discuss your needs, whether it be for safety tape, stickers, marshal's tabards or whatever — just take the logo at face value!

Get in touch — who else understands what *you* need?

MAKE IT A DATE !

☆ Sunday 22nd September ☆

THE CRAWLEY & DISTRICT M.C.C.

present **THE 7th. ROUND**
of the

500cc.

BRITISH CHAMPIONSHIP MOTO-CROSS

**TOP RIDERS IN SPECTACULAR ACTION **

at **UPPER SPARKES FARM**

CUCKFIELD, SUSSEX
(SIGNPOSTED FROM THE A23)

FIRST CHAMPIONSHIP RACE 1.00p.m.



THE SOUTH'S LEADING VIDEO CLUB

SPONSORS OF JASON MORRIS (HONDA)

WISH JASON and THE W.M.C.C. THE BEST OF LUCK

27 North Street, Emsworth, Hants

☎ 0243-377722

COLIN WARD

A.G. EQUIPMENT

For a full range of Anoraks

PLUS THE OFFICIAL GRAND PRIX '91'

TEE SHIRTS

only on
Trade Stand No 4

GILLES MÉCENE - Driver

ERIC MORGAN - Passenger

Gilles and Eric, Kawasaki's French Champions twelfth in 1990 in the world, this year have taken on a new lease of life after opening their score with two seconds at their home round in Southern France. Just seven points in Netherlands, followed a fourth and a third at Betekom in Belgium. A trip across to Portugal for well earned 26 points with another 12 in Germany. Switzerland gave them their first win of the season added to fifth, giving them 138 points and a lift into third place as they went north to Finland. Another pair flying at the moment with a possible podium position.



As used by Benny Janssen, Chris Etheridge, Colin Philpott
Also Paul Edmondson, Steve Saunders, Kelvin Tatum

SPROCKET BLANKS
OVER 500 DIFFERENT
SPROCKETS MADE
DISC. BRAKE CONVERSIONS
TRIALS AND MOTO X
HUBS AND WHEELS
REPLACEMENT DISCS
FOR TRIALS & M/X
WHEELBUILDING
AKRONT RIMS SUPPLIED
CNC MACHINING
TOOLMAKING

TALON ENGINEERING LIMITED
44 Lynx Trading Estate, Yeovil, Somerset BA20 2NZ, England
Telephone: (0935) 71508 - Your Contact GEORGE SARTIN
Fax: (0935) 31825

VIBROPLANT

NEED WE SAY ANY MORE?

- ▼ General Contractors Plant
- ▼ Large Air Compressors
- ▼ Hi-Work Platforms
- ▼ Trench Shoring
- ▼ Portable Accommodation

For all your specialist and general equipment needs from the country's leading non-operated plant hirer - just call your local Southampton depot

(0703) 770744

Also at:

London - West (0753) 685012 London - East (071) 4764194
Bridgwater (0278) 451616 Bristol (0272) 866696
Exeter (0392) 210618 Minehead (0643) 706693
Llanelli (0554) 741113

And at 28 other locations nationwide.

VIBROPLANT - HERE TO STAY

HIRE-A-TOOL

PORTSMOUTH (0705) 663131

8, CLAYBANK ROAD, COPNOR

FAREHAM (0329) 285324

18 QUAY STREET

GOSPORT (0705) 503100/503200

33 BROCKHURST ROAD

HAVANT (0705) 475530

47 WEST STREET

CHICHESTER (0243) 771898

QUARRY LANE

WATERLOOVILLE (0705) 265324/251213

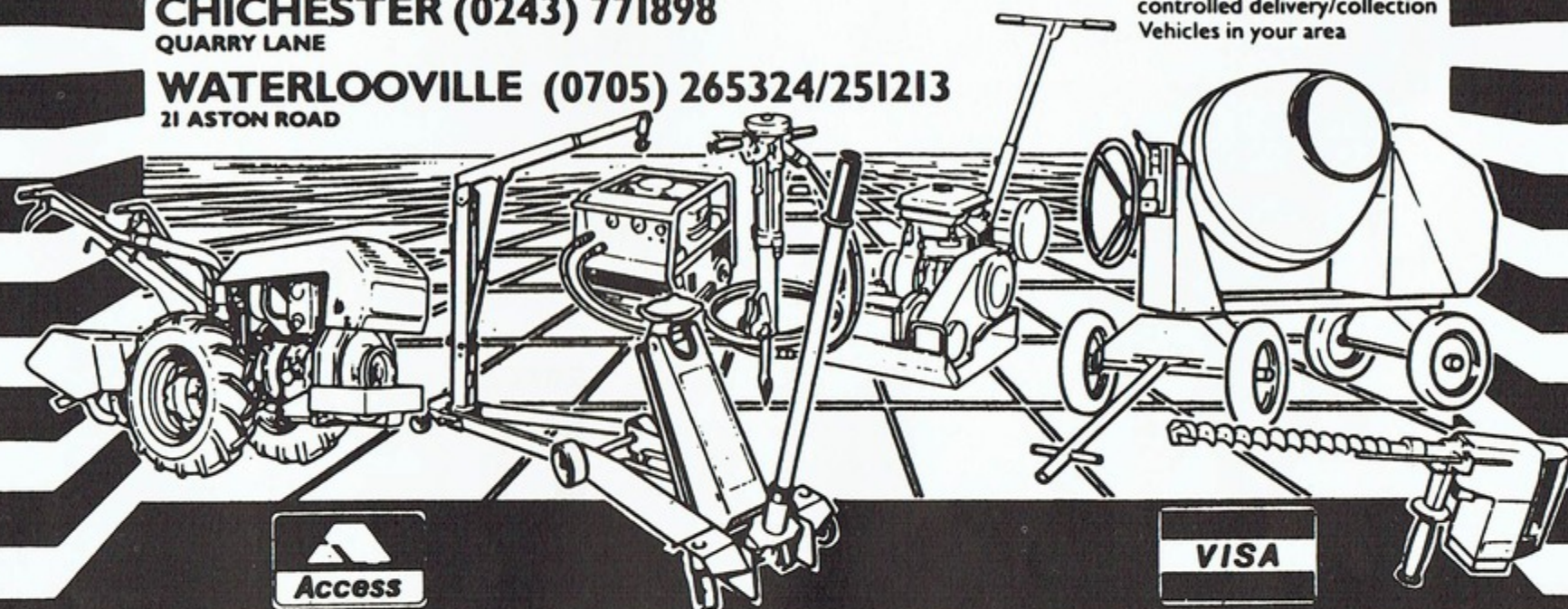
21 ASTON ROAD



Opening Times

Mon - Fri 8.00 - 5.00
Sat 8.00 - 12.00

Extensive Fleet of Radio
controlled delivery/collection
Vehicles in your area



A. Healey

Office Equipment Ltd

- Copiers • Typewriters
- Computers • Faxes

Tel: Waterlooville (0705) 269888

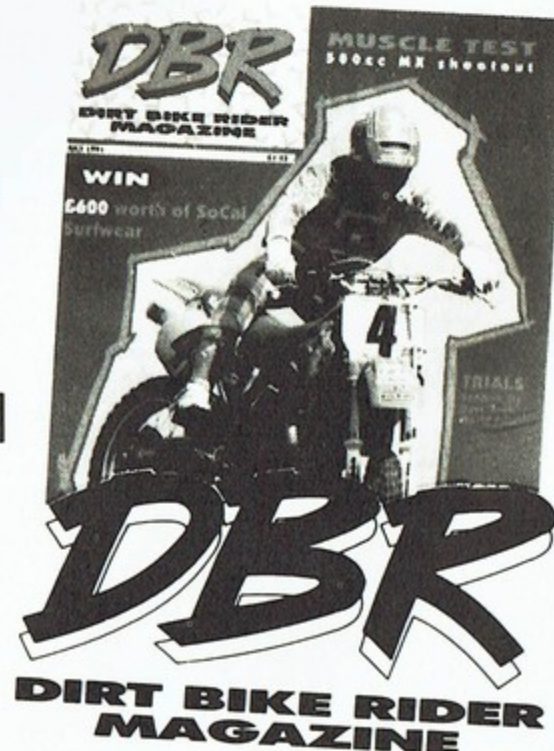
DBR

HAVE YOU SEEN IT LATELY?

New DBR is just full of off-road news and superb colour photos every month. We don't just cover MX but also trials, quads, trail bikes, enduros, schoolboy sport, tuning tips and keeping fit. Plus great prizes to win. Already this year we have given away a CR125 Honda, Yamaha TY250 Trials, Yamaha Super Jet Ski and £600's worth of Thor and Socal clothing *plus* 20 tickets for the NEC Supercross.

See what you're missing — fill in the coupon below and we'll send you a copy **FREE!**

THE COMPLETE OFF-ROAD MAG EVERY MONTH



**FREE
ISSUE**

Post to Dirt Bike Rider (Mail Order) P.O. Box 100, Stamford, Lincs. PE9 1XQ. Please send me a recent copy of DBR FREE.

Name.....

Address.....

CHRISTOPH HUESSER - Driver

ADRIAN KAESER - Passenger

IN 1976/1977 AND 1978 the world champion was Robert Grogg passengered by Andreas Huesser who's twin brother Christoph was campaigning a solo in the 250cc world championships. In the eighties Christoph switched to sidecar driving with his World Champion twin steering the spare wheel. This dynamic Swiss duo took the 1988 and 1989 World Championships. In 1990 after three reasonable rounds in Belgium, France and Czechoslovakia the rest of the season remained pointless, giving them a 19th position.

1991 opened in France with a sixth followed scoring rides in the following rounds leaving them in 8th as they head for Finland. Another couple coming to form ready to enter the fray at Langrish.





1990 FINAL POSITIONS



1 Janssen/Geurts v Kessel	NL Honda/EML	220	25 Bakens/Janssen	NL KTM/EML	21
2 Garhammer/Haas	D KTM/EML	207	26 Etheridge/Brace	GB Kawasaki/Wasp	21
3 Fuhrer/Stettler	CH Kawasaki/VMC	204	27 Nilsson/Johansson	S Honda/VMC	15
4 Netterscheid/Jehle	D Zabel/Heos	177	28 Hermesen/De Bresser	NL Maico/EML	14
5 Timmermans/Verhagen	NL Kawasaki/EML	147	29 Picut/Bouvet	F Honda/EML	10
6 Weinmann/Weinmann	D KTM/EML	147	30 Larsson/Gunnarson	S KTM/EML	8
7 Lenherr/Weber	CH Kawasaki/EML	136	31 Palsson/Davidsson	S KTM/EML	7
8 Ramon/Strubbe	B KTM/EML	126	32 Vanet/Bouvet	F Honda/VMC	6
9 Nielsen/Bitsch	DK Kawasaki/EML	88	33 Sandberg/Eriksson	S KTM/VMC	6
10 De Vries/De Visser	NL Zabel/VMC	86	34 Kops/v.d. Venne	NL Zabel/EML	6
11 Bens/Bijvelds	NL Zabel/EML	82	35 Sübert/Sübert	D KTM/EML	6
12 Mecene/Morgan	F Kawasaki/EML	64	36 Schweizer/Kopli	CH KTM/VMC	5
13 Morf/Bosshard	CH Honda/EML	64	37 Devoldere/Devoldere	B Kawasaki/Wasp	5
14 Brüstman/Kircher	D KTM/EML	63	38 Suominen/Hietala	SF KTM/VMC	5
15 Götz/Rommel	D Zabel/EML	56	39 Veldman/Veldman	NL Honda/EML	4
16 Bouvet/Bouvet	F Kawasaki/VMC	55	40 Nüssli/Meyer	CH Kawasaki/EML	4
17 v.d. Lagemaat/v.d. Lagemaat	NL Honda/EML	52	41 Bens/Bens	NL Zabel/EML	4
18 Thomas/Le Bouquin	F Honda/VMC	50	42 Novotny/Svuger	CS KTM/EML	4
19 Hüsser/Hüsser	CH KTM/VMC	36	43 Lattinen/Dammert	SF KTM/VAST	3
20 v. Heugten/Hurkmans	NL KTM/EML	33	44 Olson/Johansson	S KTM/EML	3
21 Fussenegger/Meusburger	A Kawasaki/EML	33	45 Gaillard/Duprat	F Kawasaki/EML	2
22 Roskopf/Wannersdorfer	D Zabel/EML	24	46 Gränicher/Gräicher	CH KTM/VMC	2
23 Herren/Pfister	CH Honda/EML	22	47 Wanger/Lederer	A KTM/EML	2
24 Knübben/Schneider	D Zabel/EML	22	48 Swendimann/Bühler	CH Kawasaki/EML	1



All Major
Motoring
Organisations

BOARHUNT GARAGE GROUP NORTH BOARHUNT • FAREHAM • HANTS. PO17 6JW



Retail Motor
Industry
Federation

The services of our establishments are listed below in order
to offer you our full range of facilities

BOARHUNT GARAGE (RECOVERY)

Contact: Rob Doney Snr. Tel: (0329) 833270 / 832291

24 Hour Rescue and Recovery Service for Car, Light Commercial
Heavy Commercial and Caravans

We have a fleet of 22 vehicles capable of moving almost 'Anything,
Anywhere, Anytime' Radio or Radio Telephone in ALL vehicles



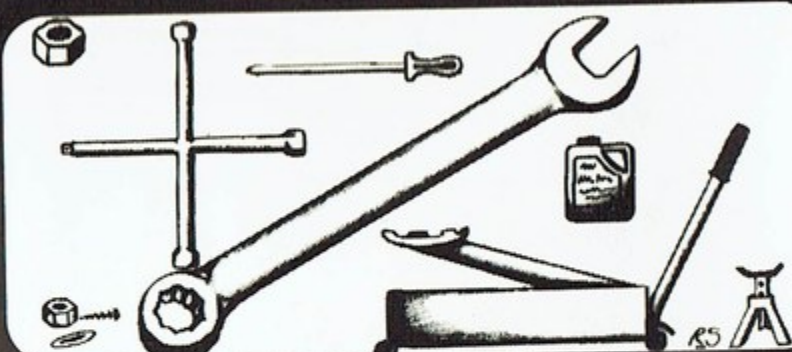
RS

BOARHUNT GARAGE

CARS and LIGHT COMMERCIALS Tel: (0329) 833270 / 832291
Fax: (0329) 834347

Contact: Paul Doney

Full Workshop Facilities include: Electronic Sun Tuner, Mig welding etc.
Servicing, Repairs, MOT Testing, Car Hire



BOARHUNT GARAGE COMMERCIALS

LIGHT, HEAVY COMMERCIALS and PSV's Tel: (0329) 833343
Contact: Rob Doney Jnr.

Full Workshop Facilities include: Somers Vehicle Hoist, Heavy Welding,
Steam Cleaning etc.

Servicing, Repairs, Plating & Testing preparation, Rescue & Recovery Service

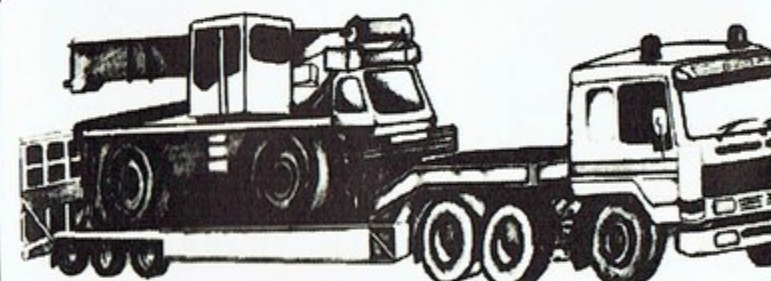


RS

BOARHUNT GARAGE (HAULAGE)

TRANSPORTATION SPECIALISTS Tel: (0329) 833343 / 833270
Transport Manager: Chris Sessions

We are capable of transporting all types of Plant or Machinery, new, used also
Damaged Cars and Commercial Vehicles
Low and Semi Low Loaders



RS

BOARHUNT FILLING STATION

Contact: Barry Doney or Nan

PETROL, OILS & ACCESSORIES Tel: (0329) 832198
NEWSAGENTS & POST OFFICE, OFF LICENCE
& GENERAL STORES



RS

NEWTOWN CRASH REPAIR CENTRE

CARS LIGHT COMMERCIALS & CARAVANS Tel: (0329) 834285
Contact: John Fisher

Full Workshop facilities include: Spraybake Oven, 3 Car Bench Body Repair Jigs,
Mig Welding etc.

Full body repair facilities, Major or Minor Repairs, Resprays etc.



RS

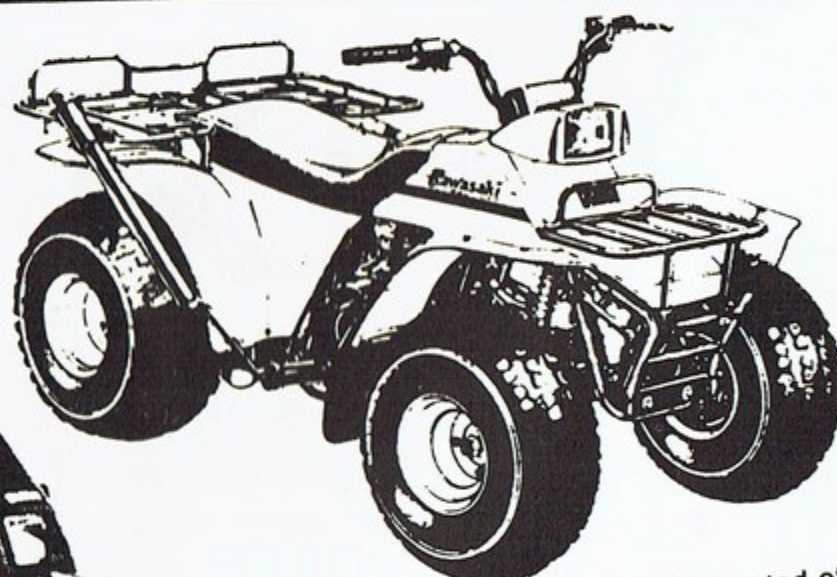
YAMAHA
SUZUKI
HONDA
KAWASAKI
LAMBRETTA
VESPA
PEUGEOT

YAMAHA A.T.V.
LOGIC EQUIPMENT
KAWASAKI
STRIMMERS
ECHO CHAINSAWS
COUNTX MOWERS
SHEDS
BARTECH FARM
GATES

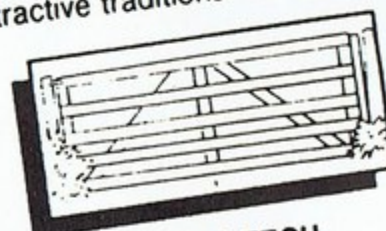
Rafferty Newman
1966 1991



THE COMPANY WITH A
25 YEAR PEDIGREE



All BARTECH gates are constructed of
QUALITY galvanised STEEL PROFILE
which allows for modern manufacturing
techniques at the same time preserving
attractive traditional designs



10FT. BARTECH
FIELD GATE

WORLD WIDE MAIL
ORDER SPARES SERVICE

Rafferty Newman

Exmouth Road Southsea (0705) 755125 West Street Fareham (0329) 232424 AMEY Ind. Estate Petersfield (0730) 64484

NEW!

MOTO X CENTRE
NOW OPEN AT
SOUTHSEA
BRANCH

Cash & Phonecard PAYPHONES

Provided for the British Moto-cross Grand Prix

by **BT**  PAYPHONES

COPYRIGHT

All literary matters in the official programme including the list of competitors and their racing numbers is copyright and any person making illegal use thereof will be prosecuted. It is also a condition of admission to any event held under an ACU Permit that no part of the meeting can be filmed or video recorded and/or video transmitted in any way without the written consent of the promoters/organisers and/or the ACU except for the sole purpose of private enjoyment.

TORRIDGE MOTOR CYCLE CLUB LTD.

will once again be running

A ROUND OF THE

BRITISH MX CHAMPIONSHIP

on

Sunday, September 8th, 1991

at

WAGGADON FARM,
TORRINGTON, N. DEVON

Table Tops - Whoops - Jumps
ALL ROUND VIEWING CIRCUIT

Practice at 9.30

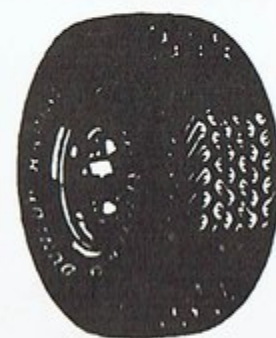
First Race 12.30

What the papers had to say about the 1990 Event:

Mike Greenough **MOTOR CYCLE NEWS** "The best round of the year"
Peter Plummer **TRIALS & MOTOCROSS NEWS** "The club put on an excellent event with not a hint of dust"

Jack Burnicle **DIRT BIKE RIDER** "Organisation in Devon was superb"

DENMEAD TYRE SERVICES



*Tyres
and
Batteries*

"TAXIDEN"

Hambledon Road, Denmead
Tel: Waterloo 255955

Free Power Washing
Today by



KEW
Cleaning Systems Ltd



HI-BAR

for
ALL
RIDERS

Gaters Mill, Mansbridge Road (A27)
West End, Southampton SO3 3HW
TEL: 0703-466221

—RIDE WITH THE BEST—



—BEST FOR SPORT—

—BEST FOR TESTS—

—BEST FOR BARGAINS—

—BEST GET IT WEDNESDAY—



Motor Cycle News THE WORLD'S No.1

**OFF
ROAD**



CHRIS ETHERIDGE AND NICK (no hands !) BRACE

1991 BRITISH CHAMPIONS

GIVING



THEIR

5th

CHAMPIONSHIP
IN A ROW 1987-1991

TRADE
ENQUIRIES

Raftery Newman

32 EXMOUTH ROAD • SOUTHSEA • HANTS PO5 2QL
TEL: (0705) 752792 • FAX: (0705) 291715