

SEMSEC

South East Motor Sport Enthusiast Club
Borough 19 MC



Lydden Festival of Cars and Racing

13th & 14th July





**NOTICE - WARNING TO THE PUBLIC
MOTOR SPORT IS DANGEROUS**

It is a condition of admission that all persons having any connection with the promotion and/or organisation and/or conduct of the meeting, including the owners of the land and the drivers and owners of the vehicles and passengers in the vehicles, are absolved from all liability arising out of accidents causing damage or personal injury (whether fatal or otherwise) however caused to spectators or ticket holders.

In the event of an accident, PLEASE REMAIN WHERE YOU ARE. There are doctors in attendance at this meeting as well as a trained Rescue Unit and Red Cross Personnel.

Spectator Notices

Please do not leave litter about the grounds, place it in the receptacles provided or take it home with you. Remember one piece of litter could be FATAL.

Please drive with care and consideration for others when leaving the circuit, this is a race track the road outside is not.

SPECIAL NOTICE - Dogs are allowed in the circuit grounds, but they must be kept securely on a lead, they are not allowed in the Paddock Area.

NOTE - It is a condition of the planning permission granted to Lydden Circuit that there be no engine noise prior to 9.00am on weekdays and Saturdays, and 12.30 on Sundays, and after 6.00pm on any day. Will competitors please comply. Furthermore competitors are forbidden to, and spectators are requested not to, approach or leave the circuit via Wootton Village, enter and exit via A2 only.

Prohibited Area Notice

The public are not permitted in the area where the notices are displayed. Any fences or gates are there for your protection. Any person found trespassing or wilfully damaging trees, fences etc WILL BE PROSECUTED BY THE CIRCUIT.

Today's Officials

Borough 19 Full Day Sprint – 13th July 2002

The MSA Permit No. 11225

MSA Steward
Club Stewards

Clerk of the Course
Deputy Clerk of the Course
Assistant Clerk of the Course
Chief Scrutineer
Chief Timekeeper
Chief MO
Chief Observer
Chief Startline
Chief Marshal
Environmental Scrutineer
Radio Control
Secretary of the Meeting

Neil Benfield
Steve Pattinson,
Tony Scott
Andy Westcott
Les Beer
Ken Greenfield
John Winder
Norman Manser
Dr Shanker
Gary Turtell
Gary Goodwin
Terry Harrison
Alan Blissett
Andy Stevens
Ken Greenfield

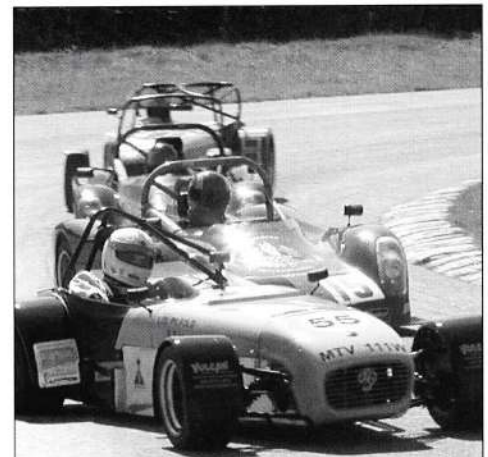
SEMSEC Race Meeting – 14th July 2002

MSA National B Race Permit No. 11218

MSA Steward
Club Stewards

Senior Clerk of the Course
Clerk of the Course
Deputy Clerk of the Course
Chief Marsha
Chief Judge
Chief Scrutineer
Chief Timekeeper
Chief Incident Officer
Chief Medical Officer
I/C Rescue Unit
Chief Observer
Secretary of the Meeting
Chief Noise Official

Mr D Wilkins
Norman Redhead,
Paul Phillips
Gary Turtell
Ken Greenfield
Mervyn Kennard
Terry Harrison
Andy Stevens
John Winder
Terry Stevens
Richard Sneader
Dr Zig Petrovic
Paul Butt
Gary Goodwin
Ken Greenfield
Howard Shaddock



Future SEMSEC Dates

Saturday 7th September Sprint & Race Meeting
Sunday 29th September Race Meeting
Saturday 26th October Sprint & Race Meeting



Course Car Supplied by Barratts of Canterbury

Go to SEMSEC's website to download championship and event regulations and pictures from today's meeting



Acknowledgments

The South East Motor Sport Enthusiast Club would like to thank the following: Credit Professionals, Goodridge, BSW Motorsport, Astratech and Barretts. Tunbridge Wells MC, Rochester MC, Borough 19 MC and all officials and marshals at today's event. All who have brought classic and custom cars and displays.

Foreword

Welcome to Lydden Circuit and this event promoted by the South East Motor Sport Enthusiasts Club (SEMSEC), a club based here at Lydden. Three provincial clubs, the Tunbridge Wells Motor Club, Rochester Motor Club and Borough 19 Motor Club assist SEMSEC.

This weekend's event sees much more than our usual on track action. Saturday sees Borough 19 Motor Club's Full Day Sprint with a capacity entry of over 100 cars. The entry is as varied as it is big with cars ranging from Minis through all types of TVR, Porsches, Caterhams, Jaguars, many types of MG to some stunningly quick single seater racecars. Sunday starts early with cycle races from the members of the V C Deal Cycling Club. Following the cycles will be a parade of classic and custom cars. Practice and nine races for saloons, sports cars and single seaters will make for a full day's action. But off track there is more. The Classic and Custom cars will be on display as will various other displays and activities. Entrance to the Paddock is free so you can also take a close look at the racing cars.

Today's programme of races features the Lydden based championships and challenge series. These championships cater for most types of car from saloons to single seater-racing cars. We also have a guest challenge from the John Cooper Challenge featuring the new BMW Minis, which is combined with some of SEMSEC's own Saloon and Sports cars. Details of SEMSEC championships are contained later in this programme and also from their website: www.semsec.org.uk.

The final race today will be the John Taylor Handicap Championship Race. Open to all saloons and sports cars, plenty of overtaking is guaranteed as faster cars try to make up time and distance penalties to catch up with the slower cars. The slower cars may have ten laps to complete and the fastest 12, so there should be no shortage of action.

Timetable

Saturday Sprint – 9.00am–6.00pm

Practice will consist of 2.9 consecutive laps of the circuit. One from a standing start and two flying laps.

There will be at least 3 timed runs for each competitor and each timed run will consist of 1.9 laps of the 1-mile circuit. The best-timed run will count towards the results.

Sunday SEMSEC Race Meeting

Race distance will be 12 laps except race 4 (Astratech Single Seater Championship, SEMSEC Single Seater Challenge & SEMSEC FF1600 Challenge Qualification Race) which will be 6 laps.

V C Deal Cycle Racing from 9.00am – 11.30am

Classic Car Parade 11.30am – 12.15pm

Race Practice 12.30pm – 2.40pm

Race One 2.45pm

Racing finished at 6.00pm

All timings shown above may be changed by the organisers without prior notice.

1. Super Saloon & Sports Car Race

Part of the TWMC Silhouette Saloons & Sports Championship – Cat A & B

2. Credit Professionals Sports Car Championship Qualification Race

3. Intermediate Saloon & Sports Car Race

Group 1, Classes 5 & 6 – Part of the TWMC Silhouette Saloons & Sports Championship – Cat C

4. Astratech Single Seater Championship, SEMSEC Single Seater Challenge & SEMSEC FF1600 Challenge Qualification Race

5. John Cooper Challenge Trophy Race & Intermediate Saloon & Sports Car Race

Group 2 – Classes 7 & 8. Part of the TWMC Silhouette Saloons & Sports Championship – Cat C

6. South East Sports & Saloon Car Challenge Race

Classes A & B

7. South East Sports & Saloon Car Challenge Race

Classes C, D & E

8. Astratech Single Seater Championship, SEMSEC Single Seater Challenge & SEMSEC FF1600 Challenge Race

9. John Taylor Handicap Championship Race

Mark Ellis



SEMSEC South East Motor Sport Enthusiasts Club



Allan Rawlings

The South East Motor Sport Enthusiasts Club was originally formed in 1994 to promote race and rallying meetings at Lydden Circuit. It was to be a joint venture between the British Automobile Racing Club London & Home Counties Centre, the Tunbridge Wells Motor Club (TWMC) and several prominent local motor sport enthusiasts.

In 1995 the management of the club was taken over by TWMC

who invited other local clubs to become involved and to use the club as a vehicle to run race and other events. Whilst a large number of clubs expressed initial interest it was left to TWMC to take SEMSEC forward with the support of Rochester Motor Club and Borough 19 Motor Club. These clubs supply many of the officials for SEMSEC events. Each club also run Sprints that are a part of some of the events. In 1995 the Lydden Marshals Club was also

amalgamated with SEMSEC and the club has grown from strength to strength ever since. 1995 saw a large increase in support for SEMSEC's meetings and they have been building on that ever since.

Although managed by TWMC and assisted by Rochester and Borough 19 Motor Club's, SEMSEC is a true Lydden based club. All of its meetings taking place at the circuit, with many local members and an

increasing number of local organisers. Many of the regular Lydden marshals are also full members of SEMSEC. SEMSEC hold regular club nights held at the Phoenix Railway Club, Crabble Road, Dover on the second Tuesday of each month start about 8pm. New members and prospective members are always welcome.

If you would like to join the club either to race, marshal, officiate or perhaps just as a social member, there is a membership application form included at the back of the programme. Racing membership is just £25.00 per annum whilst non-racing membership is £12.50 per annum. As a SEMSEC member you will also be entitled to take part in many of the Tunbridge Wells Motor Club's events and you will receive copies of both club's regular newsletters giving details of forthcoming events and reports on past events.

www.semsec.org.uk

About Sprinting

Borough 19 Motor Club Lydden Sprint

Borough 19 Motor Club organises up to seven Sprints each year at venues as diverse as North weald & Wethersfield Airfields in Essex, on the test track of Lotus Cars factory at Hethel in Norfolk and here at Lydden Race Circuit. Today's Sprint is a full day event and later in the year B19 will run a half-day Sprint, here at Lydden, followed by a SEMSEC race meeting.

Today's Sprint has proved to be terrifically popular with over 100 entries. It is a round of 11 different championships including those for GT40 and MG cars. It is also a round of the All Circuit Sprint Championship, which is promoted by of SEMSEC's associated clubs Tunbridge Wells Motor Club.

Sprint competitors compete against the clock. Each competitor has a practice of just under three laps and then two or three timed runs of just under two laps. The relatively short distance means there is no room for error. The competition is fierce and each competitor must be fully committed from when the red light turns to green and make no mistakes if they are to win their class. Cars are split into 19 different classes depending on type, engine capacity and state of

modification. There are classes for almost all types of car from standard unmodified road cars to full race prepared single seaters.

Sprints provide a real challenge to competitors. It can be a sport for purists and also an excellent introduction into motor sport for the novice. With its reduced risk of collisions with other competitors it is also a relatively cheap form of the sport.

You can find out more about Borough 19 Motor Club from their website: borough19motorclub.co.uk or by calling 0208 304 2037.



Paul Mayhew

The Clubs

Tunbridge Wells Motor Club

Tunbridge Wells Motor Club (TWMC) traces its origins back to 1911 when it was formed as a Motor Cycling Club. It later added a motor car section and is today entirely devoted to 4 wheels. The club is in its 90th year this year making it one of the oldest motor clubs in Britain today.

TWMC promotes two of the race championships which feature in today's meeting. More details of these Championships are contained elsewhere in this programme.

The Club today is also involved in a wide range of other competitive and social motoring activities. These include the Pestalozzi Hillclimb, Sprints, Trials and Autotests. For the

socially active there are Barbecues, a Dinner Dance, Ten Pin Bowling, Pub Walks, Quizzes etc. Whatever your interest, competitive or social motoring, we hope that you will join TWMC and enjoy the activities we have on offer.

TWMC meet on the first Tuesday of each month at the Junction Inn, Station Road, Groombridge, from around 8pm. New and prospective members are always welcome. Single person club membership costs £15.00 per annum whilst family membership is £17.50. For further information about the club phone the Club Chairman, Norman Redhead on 01323 502335 or visit: www.twmc.org.uk.



Above and right: fun and games at a recent TWMC club night.

Below left: Steve Farman and below right: Roy Edwards at the TWMC Lydden Sprint in June



Borough 19 Motor Club

Borough 19 Motor Club was initially formed in the Spring of 1963 and took its name after Bromley and Beckenham became the 19th London Borough. It was formed by schoolmates, workmates, customers and friends of Stoneham's Garage at Eden Park, Beckenham, Kent.

B19's first speed event was an Autocross at Stanstead Farm, Caterham in the Whitsun 1964 and later followed by a Road Rally. Borough 19 Motor Club is currently organising events for the clubman and grass roots motorsport enthusiast. It offers Production Car Trials and Autotests for members to enter in their standard road saloon cars. For the Speed enthusiasts the Club organises Autocross and Sprint meetings.

The club meets at the Colyers Arms PH, Station Road, Betsham, near Dartford on the 2nd and 4th Tuesday of every month.

Other events which are very popular with the members are the three local indoor Karting evenings and members also participate in Rallycross, Race Meetings and Rallies.

Membership is only £17 per annum. Members meet twice a month for Club Nights at Beckenham and Dartford. The Club also issues a monthly magazine.

Further membership details and forms can be obtained by telephoning: 0181 460 7632.

or visit: www.borough19motorclub.co.uk

Borough 19's Les Beer in a South East Sports and Saloons Challenge race



Rochester Motor Club

Founded in 1912, the club has one of the largest memberships in the South East, with over 300 members. The club is fairly unique in that its activities encompass karting, car and motorcycle events. The ever expanding karting section features four stroke racing with eight classes, from 8 year old upwards. This section operates under its own promotional banner of the Formula 6 Association. Also Rochester Motor Club, as one of the 3 clubs running the Kent Racing Combine, has long been promoting motorcycle road racing. It is currently promoting a

series of 6 Hour Endurance races. The car section is proud to promote events at Lydden and to participate in the promotion of the SEMSEC race series. Annual membership is only: £10.00 Junior, £12.00 Senior, £14.00 Joint

The Club has its own Offices at 120, Delce Road, Rochester, Kent ME1 2DT and may be contacted by phone on 01634 841499. or visit: www.rochestermc.co.uk

Jon Low at an RMC Lydden Sprint



Sprint Entry List

Borough 19 Motor Club Lydden Sprint – 13th July 2002

No. Driver Club Make Model CC's Champs

CATEGORY A – For Standard Production Sports & Saloon Cars

A0 Budget Cars of any engine capacity

1 Barry English Rochester Vauxhall Astra GTE 8V 1998

A1 Up to 1400cc

2 Mike Heath MGCC B.L. MG Metro 1300 1275
 3 John Roseblade MCAC Suzuki Swift GT1 1300 2,5
 4 Stanley Sweet Hart/Lancia Lancia Fulvia 1298 1
 5 James Eastwood MGCC Austin Healey Sprite 1275 11

A2 Over 1400cc to 2000cc

6 Niall Campbell MGCC MGB GT 1800 11
 7 Jonathan Dalby Sevenoaks Peugeot 309GTi 1905 1,7
 8 Nathan Corridon BARC SE Alfa Romeo 145 1970 8

A3 Over 2000cc

10 Brian Winstone Borough 19 Porsche 911RS 3600 4,5
 11 Robin Harris BARC (SE)/TVRCC TVR Griffith 500 4997 1,2,3,4,5,6,8
 12 Den Lyon BARC TVR Chimaera 4556 1
 13 Clive Wooster BARC SE Porsche 944 Turbo 2479 2,8
 14 Derek Jones BARC (SEC) BMW Z3M Coupe 3201 1,2,3,4,5,8
 15 David Balderson Sevenoaks TVR Tasmin 350FM 350 2
 210 Steven Winstone Borough 19 Porsche 911RS 3600

CATEGORY B – Roadgoing Production Sports & Saloon Cars

B4 Up to 1400cc

16 Andrew Actman Sevenoaks Austin Healey Sebring Sprite 1330 7
 17 Dan Condon BARC SE Clan Crusader 875 8
 18 Mike Edwards Sevenoaks Austin Mini 1380 1,6,7
 19 Dick Athow Sevenoaks Alpine Renault A110 1397 1,2
 20 Ross Savile Sevenoaks Austin Mini 1275 7

B5 Over 1400cc to 2000cc

21 Andrew Webber Sevenoaks Lotus Elan+2 1798 6,7
 22 Jonathan Miles Sevenoaks Escort RS2000 1993 1
 23 Stephen Craig Sevenoaks Ford RS2000 1998 1,2
 24 Chris Fulke Greville Sevenoaks Vauxhall Astra GSR 1998 1,2,3,4,5,7,8
 25 Ken Rorrison Lancia MC Lancia Fulvia 1584 2
 26 Jon Williams Club Alpine Renault Fiat X1/9 1498 9

B6 Over 2000cc

30 Denise Jones Sevenoaks Nissan Pulsar 2050 2,6
 31 Glen Keirl BARC SE Jaguar XJS 5343 8
 32 Steve Heath TVRCC/BARC TVR 390 SE 5150 1
 33 Frank Trueman Greenbelt Ford Sierra XR4x4 2900 3,8
 34 Steve Cox TWMC TVR V8S 3947 1,2
 35 Keith Crocker Sevenoaks Ginetta G33 4200
 36 Martyn Ellis Sevenoaks Talbot Sunbeam Lotus 2172 3,7,8
 37 Neil Armstrong Sevenoaks/BARC Mitsubishi Lancer 2000 2,4,5,7,8
 38 Philip Gooriah BARC SE & SW Mazda RX7 2600 8
 39 Jim Giddings Sevenoaks/RMC Triumph TR8 4600 7
 40 Les Beerling BARC Ford Cosworth 1993 8
 130 Trevor Jones Sevenoaks Nissan Pulsar 2050 2,6,7
 131 Dean Keirl BARC SE Jaguar XJS 5343 8

CATEGORY C – Roadgoing Kit Type Cars & Replica Cars

C7 Up to 1700cc

42 Daniel Pickett Central Sussex MC Westfield SE 1699 2
 43 Matt Bent Ricardo Motor Sylva Striker 1660 1,2
 44 Alex Clark Ricardo Motor Fisher Fury 900 2
 45 Gary Drew Brighton & Hove Westfield Sebring Sprite 1700 1
 46 David Offen Sevenoaks Westfield SE 1680 7
 142 Dennis Pickett Central Sussex MC Westfield SE 1699 2
 143 Tony Bent Ricardo Motor Sylva Striker 1660 1,2
 144 Roger Clark Ricardo Motor Fisher Fury 900 2

C8 Over 1700cc

47 Martin Hacon GTD 40's CC GTD GTD 40 5000 11
 48 Peter Ward Sevenoaks Caterham 7 1796 2,7
 49 Ian Crocker Sevenoaks Westfield SEIGHT 4200 2,6,7
 50 Mike Harrington Borough 19 Caterham 7 1796 3
 51 Tim Stevens BARC Lotus Exige 1796 1,2,3,5,8
 52 Martin Leach TWMC Lotus Europa 2000 1
 53 Paul Stoakes Borough 19 Caterham Seven 1800 1
 172 Roy Smart GTD40's CC GTD40 40 5600 10



Stanley Sweet



Jonathan Dalby



Den Lyon



Mike Edwards



Stephen Craig



Steve Cox



Matt & Tony Bent



Peter Ward

55	David Boon	Borough 19	Lotus	Exige	1796	2,4
56	Ian Rowles	ECMC	Westfield	Sei	1800	3
57	Stephen Laing	Peterborough MC	Lotus	Exige	1796	1,3,5
147	Mrs Mo McNicoll	GTD 40's CC	GTD	GTD 40	5000	11

CATEGORY D - Modified Production Cars Complying with MSA Sprint & Hillclimb Regulations
(excl. Kit Type cars & replicas, Lotus &, Elise, Exige and derivatives of these cars, Sylva, Caterham and Westfield cars)
D9 Up to 1400cc

D10	Over 1400cc to 2000cc					
60	Steve Holt	RMC/BARC	Ford	Escort	2000	4
61	Greg Pye	BARC	Alfa Romeo	Sud-Sprint	1760	1,8
62	Graham Bahr	Borough 19	BMW	2002Tii	2000	3,8
63	Nigel Craig	Sevenoaks	Ford	RS2000	1998	2
160	Peter Holt	RMC/BARC	Ford	Escort	2000	4

D11	Over 2000cc					
65	Mike Plant		Ford	Escort	2000	8
66	Michael Kavanagh	TWMC	MGC	GT	2912	4
67	Carole Wilks	B19/RMC/TWMC/7oaks	Ford Sierra	Sapphire	1998	1
165	Dave Plant		Ford	Escort	2000	8

CATEGORY E - For single Seaters, Sports Racing Cars & Special Saloons & Other cars not complying with categories A B C & D

E12 Special Saloons, Group B and GT1 Sports Cars, World Rally Cars, Kit Type & Replica Cars, any capacity, not complying with any other classes.

70	Ray Christopher	GTD Owners	GTD40	GT40	5700	11
71	Phil Rutherford	RMC	Sylva	Striker	900	4
72	Paul Thompson	GTD40's CC	GT Developments	GT40	5700	
73	Richard Lee	Sevenoaks	MGC	6R4	3000	1
74	David Parker	GTD40's CC	GTD	R42	5700	
75	Malcolm MacAdam	GTD 40's CC	GTD Dev.	GTD 40 ML1	5000	
76	Andrew Fordyce	GTD40's CC	GTD 40	Mark 1	5000	
77	Julian Kingston-Smith	GTD 40's CC	G T Dev.GTD 40	Mk1	5000	10
170	Roy Wing	GTD40's CC	GTD40	GT40	5700	11
171	Nick Rutherford	RMC	Sylva	Striker	900	4

E13 Pre 1994 Formula Ford 1600 & Formula First (both must be run on any control wheels & tyres accepted by the MSA for this class)

80	Dave Pearce	Borough 19	Formula Ford	Van Dieman RF83	1600	3,5
81	Keith Sollis	BARC/HAS	Van Diemen	RF86	1600	8
82	Innes Hickman	BARC	Van Dieman	RF89	1600	4
83	Jonathan Davis	HAS	Hawke	DL11	1600	8
84	Andrew Mathis	BARC SW	Laser	HD87 FF1600	1600	8
85	John Sharp	Borough 19	Formula Ford	Van Dieman		
86	Neville Moon	Borough 19	Jamun	M92	1600	5,8
87	Gary Tidwell	BARC	Alexis	Mk18B	1600	8
180	George Newton	Borough 19	Formula Ford	Van Dieman RF83	1600	

E14 Single Seaters & Sports Racing Cars up to 1300cc						
90	Glenn Del Medico	BARC/HAS	Jedi	Mk4	1180	1,3,4,8
91	Tony Birch	BARC	Radical	Clubsport	1095	2,5
92	Ian Catt	TWMC	OMS	SF2A	900	1

E15 Single Seaters & Sports Racing Cars over 1300cc and up to 1700cc						
93	Bill Johnson	BARC SE	Mallock	Mk21	1700	2,3,4,8
94	Steve Broughton	HAS	SBD Westfield	Sei Wide	1598	8
193	Glenn Del Medico	BARC/HAS	Mallock	Mk21	1700	

E16 Single Seaters & Sports Racing Cars over 1700cc.						
95	Richard Lee	Sevenoaks	March	813	1998	1
96	Barry Train	BARC	Reynard	SF78	1998	1,2,6
97	Peter E Voigt	BARC	Surtees	TS15 F2	1993	
98	Adrian Desoutter	HAS	Reynard	SF79	1989	8
99	Graham Wellsted	TWMC/BARC SE/SW	Zeus	Single Seater	1998	1
100	Neville Theobald	HASA/BARC	D J	ADS 2	1340	3

E17 Luffield Cars MGCC Championship Contenders						
101	Terry Pigott	MGCC	MG	BV8	4600	11
102	Mike Cole	MGCC	MG	B GT	1950	11
102	Christopher Cooper	MGCC	MG	C GT	2998	11
104	Martyn Phillis	MGCC	MG	MGA Coupe	1950	11
105	Keith Doherty	MGCC	MG	TF	1500	11
106	Ralph Higson	MGCC	MG	Midget	1380	11
107	John Taylor	MGCC	MG	1300	1300	11
108	John Rose	MGCC	MG	MGB V8	3900	11
109	Matt Dryell	MGCC	MG	Metro Turbo	1275	11
110	Marc Hanson	MGCC	MG	F UVC	1796	11
111	John Neighbour	MGCC	MG (1934)	N A Magnette	1271	11
112	David Toogood	MGCC/S Eastern	MG	GT	1800	11



Graham Bahr



Carole Wilks



Richard Lee



Innes Hickman



Glen Del Medico



Barry Train

Key to Championships

- 1 All Circuit Sprint
- 2 ACSMC
- 3 AEMC
- 4 ASEMC
- 5 LCAMC
- 6 Sprint Leaders
- 7 Marketing Machine
- 8 CCC
- 9 Club Alpine Renault
- 10 GTD 40's
- 11 Luffield MGCC

Race Entry List

South East Motor Sport Enthusiasts Club in association with the Tunbridge Wells Motor Club, Rochester Motor Club & Borough 19 Motor Club.

2002 Lydden Championship Race Meeting. Saturday 14th July 2002 MSA (NAT B) Permit No. 11218

Race 1 Super Saloon & Sports Car Race 12 Laps

Part of The TWMC Lydden Silhouette, Saloon & Sports Championship Race Cat A & B

No.	Driver	Make/Model	Engine/cc	Home Town
Class 1 – Sports Racing Cars, Prototype Sports & One Make Sports Cars specifically built and designed racing:				
7	Mike Roberts	Jade Sports	2000/SBD Vauxhall	Hailsham
15	Charles de Garston	Radical Clubsport	1100/Powertec/Kawasaki	Tunbridge Wells
22	Neil Huggins	Radical Pro-Sport	1300/Suzuki	Pimlico
82	Julian Dodd	Radical Clubsport	1100	Rickmansworth
87	Graham Richardson	Radical Clubsport	1052?Powertec Kawasaki	Basingstoke
88	Tony Eckford	Ginetta G27	1800/Ford Zetec	Bisham

Class 2 – Silhouette Saloons & Sports Cars over 1850cc

20	Mark Burton	Westfield Seven	2000/SBD Vauxhall	Biggin Hill
76	Denis Coomber	Halliday JF2	2000/Flowtech	Horsebridge

Class 3 – Silhouette Saloons & Sports Cars over 1400cc and up to 1850cc.

85	Peter Thurston	Sunbeam Stilleto	1800/Cosworth	Westmarsh
----	----------------	------------------	---------------	-----------

Race 2 Credit Professionals Sports Car Championship Race 12 Laps

Class A – Roadgoing Sports Cars up to 2000cc and Mass Production based Sports Cars up to 1700cc.

1	Steve Luscombe	MG Midget	1380/Bill Richards	London
---	----------------	-----------	--------------------	--------

Class B – Roadgoing Sports Cars over 2001cc, Mass Production based Sports Cars over 1701cc and Caterham 7 type cars up to 1700cc.

11	Rory Stockbridge	Caterham 7	1700/Ford Roger King	Farnham
51	John Hill	Caterham S	1400/Rover K Series	Beckenham
72	Simon Ray	Caterham 7	1700/Kent/Roger King	Padbury

Class C – ‘Caterham 7’ type cars over 1700 cc and motor cycle derived engined sports cars.

20	Mark Burton	Westfield Seven	2000/SBD Vauxhall	Biggin Hill
27	Steve Foster	Caterham Seven	1998/VX	Bisley
33	John Dewing	Westfield SEI	1999/SBD Vauxhall	West Malling
35	Neil Cordwell	Westfield SEI	1998/Ford Zetec	Shatterling
55	Lol Pilfold	Caterham Seven	1998/Vauxhall/Vulcan	East Preston
69	Merrick Linnett	Caterham SLR	1796/Minister	Felpham
77	Alan Maynard	Caterham Fireblade	916/Honda	Washington

Class D – Other Kit Cars and Sports Cars of limited production runs excluding sports racing cars and cars built for one make sports car formulae (i.e. Radicals, Global Lights etc).

3	Trevor Phillips	Sylva Clubmand MK 4	1998/Baines Cosworth	Crowborough
32	Mark Faulkner	Ginetta G12	1594/Lotus Twin Cam	Odiham
41	Denis Jones	Jade Clan	998/Trans Imp	Bletchingley

Race 3 BSW Motorsport Intermediate Saloons & Sports Cars Group 1 Race 12 Laps

Part of the TWMC Lydden Silhouette, Saloon & Sports Car Championship Race Cat C

Class 5 – Forced Induction Saloons which otherwise comply with GR J23 with the exception of J23.5.6 & Sports Cars over 2000cc.

3	Steve Govett	Rover 22 Turbo	1998/Rover	Sittingbourne
5	David Smart	Ford Sierra Sapphire	1998/Cosworth	Gravesend
10	Peter Wilkinson	Ford Sierra Cosworth	2000/Ford	Bethersden
18	Brian Leonard	Ford Sapphire Cosworth	1993/BBR	Eastchurch
D 45	Steve Weatherley	Ford Sierra Sapphire	2000/Cosworth	St Leonards on Sea
46	Peter Wilks	Ford Sierra Sapphire	1998/Cosworth	Orpington
47	Bolanji Odunsi	Ford Sierra Cosworth	2000/BSW Motorsport	Kingston u Thames
54	Peter Spiers	BMW M3 E30	2300/Standard	Tunbridge Wells
57	Nick Wadhams	Saab 9000 Turbo	1985	Emsworth
64	Peter Hillocks	Porsche 911T	3300/Porsche	Sunbury
89	Cem Osman	BMW M3	2300	London
91	Eward Christie	BMW M3	2300	London

Class 6 – Modified Saloons over 1800cc and sports cars up to 2000cc

8	Craig Dawson	Peugeot 205 Gti	1928/Peugeot	Ashford
19	Jody Halse	BMW 325 Sport	2500/Munich Legends	Tunbridge Wells
70	Neil Bostock	Ford Escort	2000	Woodingdean
95	Leigh Parkes	Triumph Vitesse	2600	Sutton
96	Nigel Craig	Ford MK II RS 2000	1998/Pinto	Canterbury

Results

1st

2nd

3rd

4th

5th

6th

Results

1st

2nd

3rd

4th

5th

6th

Results

1st

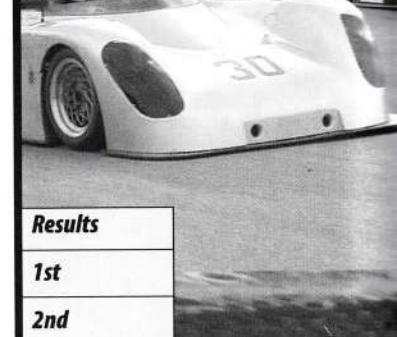
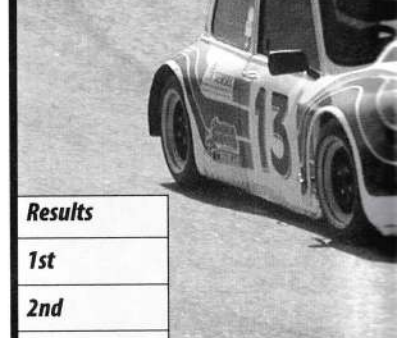
2nd

3rd

4th

5th

6th



Results**1st****2nd****3rd****4th****5th****6th**

Paul Bernal-Ryan

Race 4 Astratech Single Seater Championship, Semsec Single Seater Challenge & SEMSEC Ff1600 Challenge Qualifying Race 6 Laps**ASTRATECH SINGLE SEATER CHAMPIONSHIP**

Class B - Formula Ford Zetec Engined Cars and Formula Ford 2000 Cars

* 23 Robert Howe Van Diemen RF96 1800/Scholar Canterbury

SEMSEC SINGLE SEATER CHALLENGE

Class B - Formula Ford 1800 Zetec engined cars and Formula Ford 2000 Cars

* 23 Robert Howe Van Diemen RF96 1800/Scholar Canterbury

SEMSEC FF1600 CHALLENGE

Class B - Cars manufactured between 1/1/1982 & 31/12/1989

62 Mark Austin Crossle 62F 1600/Scholar Wickford

Mary Grinham

Charles de Garston

Mike Burton

Used throughout the Motor Sport world, developed for the most demanding customers; Formula One, Indy, Champ, Nascar and World Rally to project Thrust and Rolls Royce cars. Goodridge offers fluid transfer and hydraulic solutions for everyone. Our Engineers work daily with race teams and Development Engineers at all levels. All Goodridge customers can benefit from this experience and the Tried & Tested product range on offer. Goodridge has invested in product quality and excellence, with traceability, OE approvals, ISO 9002, TUV & DOT standards. When quality is essential, use the best - Goodridge products - Guaranteed Forever. There are Goodridge companies and distributors at the heart of Motor Racing worldwide. Our product knowledge is available to you as locally as possible. We continue to place ourselves at the heart of racing and automotive engineering worldwide.

High Performance Fluid Transfer Systems

Pushing the limits worldwide



Goodridge Ltd, Group Headquarters, Exeter Airport, Exeter, EX5 2UP, ENGLAND Phone: (01392) 369090 Fax: (01392) 441780
SILVERSTONE, Technical Centre: (01327) 858799

UNITED STATES Los Angeles:(310) 533 1924 Mooresville:(704) 662 9095 Indianapolis:(317) 244 1000
NETHERLANDS (015) 2565232 FRANCE (01) 64 38 44 44 GERMANY (6) 321 60168 JAPAN (03) 57 16 4795 SPAIN (96) 333 2044

Race 5 John Cooper Challenge Trophy Race & BSW Motorsport Intermediate Saloons Race Group 2 12 Laps Part of the TWM Lydden Silhouette, Saloon & Sports Car Championship Cat C Classes 7 & 8

John Cooper Challenge Cars

4	Liz Biagioni	BMW Mini Club Sport JCW 1598		London
9	Phillip Dyson	BMW Mini Club Sport 1600		Bognor Regis
10	Ross Dyson	BMW Mini Club Sport 1600		Bognor Regis
17	Tony Skelton	Mini Cooper 1600/STD		Elham
20	Andrew Stevens	Mini Cooper Clubsport 1600/John Cooper Works		Norwich

Intermediate Saloons & Sports

Class 7 - Modified Saloons over 1400cc and up to 1800cc

2	Nathan Mills	Ford Escort	1700	Faversham
24	Alan Cherry	Ford Fiesta Si	1796/Zetec	Dartford
26	Bill Richards	Rover Mini	1460/Bill Richards Racing	Romney Marsh
38	Andy Pipe	Ford Escort Mexico	1600/Kent Dave Wills	Harlow
78	Russell Bradley	VW Golf Gti	1781	Hornchurch

Class 8 - Modified Saloons and Sports Cars up to 1400cc and all Roadgoing Saloon & Sports Cars

51	Derek Parker	Caterham Seven	1400/Rover K Series	Orpington
77	Alan Maynard	Caterham Fireblade	916/Honda	Washington
94	Jon Orr Hillman	Imp 998/Patten	Oxshott	
99	Andrew Davenall	Sunbeam Tiger	4261/Ford 260cv V8	Middlesex

Race 6 South East Sports & Saloon Car Challenge Race Classes A & B 12 Laps

Class A - Sports Racing Cars up to 2000cc, & Sports Cars built & designed for one make Sports Racing

Series up to 2000cc

7	Mike Roberts	Jade Sports	2000/SBD Vauxhall	Hailsham
15	Charles de Garston	Radical Clubsport	1100/Powertec/Kawasaki	Tunbridge Wells
22	Neil Huggins	Radical Pro-Sport	1300/Suzuki	Pimlico
82	Julian Dodd	Radical Clubsport	1100	Rickmansworth
88	Tony Eckford	Ginetta G27	1800/Ford Zetec	Bisham

Class B - Silhouette GT Saloons over 1600cc, Production Kit Cars over 1700cc and Production based Sports Cars over 2500cc

35	Neil Cordwell	Westfield SEI	1998/Ford Zetec	Shatterling
55	Lol Pifold	Caterham Seven	1998/Vauxhall/Vulcan	East Preston
64	Peter Hillocks	Porsche 911T	3300/Porsche	Sunbury
69	Merrick Linnett	Caterham SLR	1796/Minister	Felpham
85	Peter Thurston	Sunbeam Stiletto	1800/Cosworth	Westmarsh
76	Denis Coomber	Halliday JF2	2000/Flowtech	Horsebridge
99	Andrew Davenall	Sunbeam Tiger	4261/Ford 260cv V8	Middlesex

Race 7 South East Sports & Saloon Car Challenge Race Classes C, D & E 12 Laps

Class C - Special Saloons, Production Based Sports Cars up to 2500cc and Forced Induction Modified Production Saloons and Silhouettes GT Saloons up to 1600cc and Production Kit Cars up to 1700cc

3	Steve Govett	Rover 22 Turbo	1998/Rover	Sittingbourne
10	Peter Wilkinson	Ford Sierra Cosworth	2000/Ford	Bethersden
11	Rory Stockbridge	Caterham 7	1700/Ford Roger King	Farnham
17	Geoff Weeks	Fiat 127GT	1297	Welling
13	Mary Grinham	Maguire Mini	1425/BL	Barnehurst
26	Bill Richards	Rover Metro	1298/Cosworth	Romney Marsh
D 45	Steve Weatherley	Ford Sierra Sapphire	2000/Cosworth	St Leonards on Sea
46	Peter Wilks	Ford Sierra Sapphire	1998/Cosworth	Orpington
47	Bolanji Odunsi	Ford Sierra Cosworth	2000/BSW Motorsport	Kingston upon Thames
67	Ray Barrow	Ford Escort RS 2000	2000/Ford	Brighton
72	Simon Ray	Caterham 7	1700/Kent/Roger King	Padbury
77	Alan Maynard	Caterham Fireblade	916/Honda	Washington
89	Cem Osman	BMW M3	2300	London

Class D - Modified Production Saloons up to 1700cc

2	Nathan Mills	Ford Escort	1700	Faversham
---	--------------	-------------	------	-----------

Class E - Modified Saloons over 1700cc

19	Jody Halse	BMW 325 Sport	2500/Munich Legends	Tunbridge Wells
36	Bob Nicholls	BMW 2000 Tii	1990	Meopham
57	Nick Wadham	Saab 9000 Turbo	1985	Emsworth
91	Eward Christie	BMW M3	2300	London
95	Leigh Parkes	Triumph Vitesse	2600	Sutton

Results

1st

2nd

3rd

4th

5th

6th

Results

1st

2nd

3rd

4th

5th

6th

Results

1st

2nd

3rd

4th

5th

6th



V C Deal - Cycling Club



Cycling for all ages

Our thanks once again to SEMSEC and the Lydden Circuit for allowing us to run the cycle races today. I hope you will find them interesting and entertaining.

As you will see, cycling is for all ages to enjoy. V C Deal strongly promotes the sport locally, especially to young people. Last year the club was awarded a lottery grant, which enabled them to purchase ten mountain bikes. This allows children who are not fortunate enough to own their own cycle to take part. Our qualified coaches take training sessions for youngsters from five years old upwards. This takes place during the summer months at Crabble Stadium, Dover, every Friday evening. It's an excellent facility, offering the youngsters a traffic free environment in which to enjoy and learn cycling. It is also the Club's headquarters.

Within the recent past the club has held in its ranks both National and County

Champions. In the Veterans class, our own club chairman won a World Championship title just two years ago. The competitive side to the sport is very well supported. However, those who just enjoy riding for pleasure are also encouraged. There is also a Touring section, plus a strong following for mountain bikers.

Lydden Circuit is thought upon as our second home! Every Tuesday evening from mid April to mid September we hold cycling sessions here. These cater for all standards and age groups. So, if you fancy trying out the sport, just come down on one of those evenings when you will be made most welcome. Even if you do not have a bike and just want to see what is going on, then please come.

Enjoy the racing and I hope you will have a good day.

Trevor Trett, V C Deal Club Secretary

Results
1st
2nd
3rd
4th
5th
6th

Race 8 Astratech Single Seater Championship, SEMSEC Single Seater Challenge & SEMSEC FF1600 Challenge Race 12 Laps

ASTRATECH SINGLE SEATER CHAMPIONSHIP

Class B - Formula Ford Zetec Engined Cars and Formula Ford 2000 Cars
 * 23 Robert Howe Van Diemen RF96 1800/Scholar Canterbury

SEMSEC SINGLE SEATER CHALLENGE

Class B - Formula Ford 1800 Zetec engined cars and Formula Ford 2000 Cars
 * 23 Robert Howe Van Diemen RF96 1800/Scholar Canterbury

SEMSEC FF1600 CHALLENGE

Class B - Cars manufactured between 1/1/1982 & 31/12/1989
 62 Mark Austin Crossle 62F 1600/Scholar Wickford

Results
1st
2nd
3rd
4th
5th
6th

Race 9 Goodridge John Taylor Handicap Championship Race 12 Laps

5	David Smart	Sierra Sapphire	1998/Cosworth	Gravesend
15	Charles de Garston	Radical Clubsport	1100/Powertec/Kawasaki	Tunbridge Wells
17	Tony Skelton	Mini Cooper	1600/STD	Elham
27	Steve Foster	Caterham Seven	1998/VX	Bisley
32	Mark Faulkner	Ginetta G12	1594/Lotus Twin Cam	Odiham
35	Neil Cordwell	Westfield SEI	1998/Ford Zetec	Shatterling
D 45	Steve Weatherley	Ford Sierra Sapphire	2000/Cosworth	St Leonards on Sea
47	Bolanji Odunsi	Ford Sierra Cosworth	2000/BSW Motorsport	Kingston upon Thames
54	Peter Spiers	BMW M3 E30	2300/Standard	Tunbridge Wells
55	Lol Pilfold	Lotus1960 Series 1 MK7A	1275	East Preston
57	Nick Wadham	Saab 9000 Turbo	1985	Emsworth
64	Peter Hillocks	Porsche 911T	3300/Porsche	Sunbury
69	Merrick Linnett	Caterham SLR	1796/Minister	Felpham
76	Denis Coomber	Halliday JF2	2000/Flowtech	Horsebridge
81	Ron Gee MG	B Roadster	1850/BMC	Wingham
82	Matthew Truelove	Radical Clubsport	1100	Fetcham
87	Graham Richardson	Radical Clubsport	1052/Powertec Kawasaki	Basingstoke
88	Tony Eckford	Ginetta G27	1800/Ford Zetec	Bisham
89	C Osman	BMW M3	2300	London
99	Andrew Davenall	Sunbeam Tiger	4261/Ford 260cv V8	Middlesex

Key

* Denote cars that are entered in more than one championship in the same race and therefore appear in the entry list for that race twice

D Denotes disabled driver

Championships

In 2002 the Tunbridge Wells Motor Club will promote three championships for various saloon and sports cars. One of the championships is jointly promoted by the British Automobile Racing Club South East Centre (BARC SEC). The South East Motor Sport Enthusiasts Club promotes a handicap championship for saloon and sports cars and jointly promotes a single seater racing car championship with BARC SEC.

Each championship has eight rounds at Lydden with some having extra rounds at Brands Hatch and Silverstone. Full details of all the championships can be downloaded from the SEMSEC website: www.semsec.org.uk.

Latest championship positions and race results are also available from the website.



Robert Bridger

Intermediate Saloon & Sports Car championship

The Intermediate Saloon & Sports Car championship is for modified saloon & sports cars and some forced induction saloons. The regulations are written to provide races for cars of similar levels of limited modification to compete on equal terms. This championship is suitable for cars built for the vast majority of one make saloon and hatchback series including: Alfa, Fiat, Fiesta Challenge, Tomcat, VW Cup, Super Coupe Cup, MG (all), Road Saloons, Modified Saloons and many more.

Cars retain the original bodyshell with limited modifications allowed. The engine block and cylinder head must be externally identifiable as that fitted to the original homologated model.



Craig Dawson

TWMC Lydden Silhouette, Saloon & Sports Championship

This championship allows for much greater modifications than the Intermediate Saloons & Sports. It allows for space framed cars and a free choice of engines and transmissions. The cars should have the silhouette of an original manufacturer's model, but there is a little poetic licence in this area. Non commercial sports prototypes and purpose built one-make sports cars up to a limit of 2000cc also compete in this championship.



Jim Greenfield

The John Taylor Handicap Championship

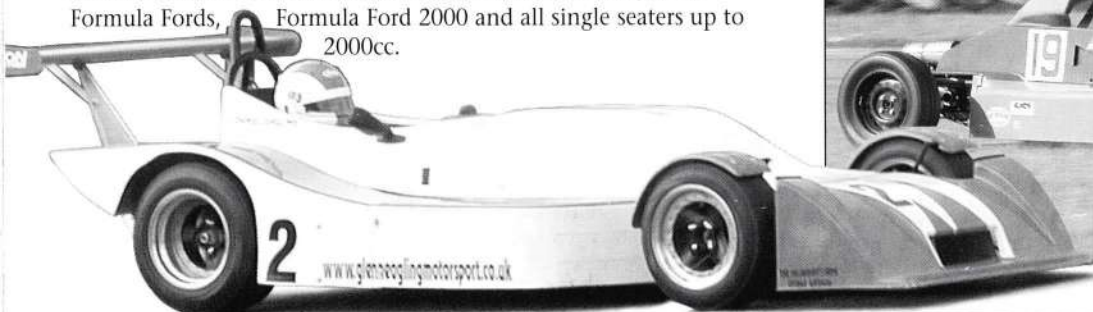
John Taylor was the SEMSEC timekeeper from 1995-97. It was John who devised a handicap championship for saloon and sports cars. The aim of this championship is to even-out the advantages of weight, power and driver from a wide range of entrants. A time handicap is applied according to performance and can be as much as two laps, with the slowest cars completing ten laps to the fastest cars 12 laps. A handicap race can be difficult to follow, but plenty of overtaking is guaranteed. Towards the end of the race cars start bunching together and in theory should cross the line together.



Steve Govett

Single Seater Championship

A championship for single seat racing cars with an engine capacity limit of 2000cc. There are classes for Formula Ford 1600, Zetec Formula Fords, Formula Ford 2000 and all single seaters up to 2000cc.



Championship and event details are available from SEMSEC's website: www.semsec.org.uk

Credit Professionals Sports Car Championship

A wide variety of sports cars are eligible to run in this championship. There are classes for Caterham Seven type cars, mass-produced sports cars, 'road-going' sports cars and sports cars of a limited production. Points are awarded according to class finishing position so the race winner may not be the only high scoring contender.

Credit Reports

ICC UK & European
Credit Information



The best online source for credit and business information on 31 million public and private companies worldwide

Debt Collection



**NO COLLECTION
NO COMMISSION**

Credit Professionals Ltd

WWW.CREDIT-MANAGER.CO.UK
Call: Trevor Phillips on 01892 665806
or Email: credit.professionals@btclick.com

Credit Professionals Sponsors of the TWMC Sports Car Championship



Trevor Phillips

SEMSEC and TWMC are delighted that once again Credit Professionals are supporting the 2002 TWMC Sports Car Championship. The owner of the company, Trevor Phillips, is a regular competitor in the series with his metallic cherry pink Sylva Clubman MkIV and is a previous championship award winner.

Trevor's company helps businesses to increase their profitability through better management of their credit control. He is Vice President of

The Institute of Credit Management, the professional body for credit managers and is a regular lecturer and presenter on the subject. Whether it is collecting a single debt, managing an entire sales ledger or providing training, staff or consultancy, CPL can help.

As part of credit professionals support the overall Credit Professionals Sports Car Championship winner will receive £250 and the runner up will receive £100.

BSW Motorsport Sponsors of the Intermediate Saloons



Nigel Craig

BSW Motorsport is the sponsor of the hugely successful Intermediate Saloons. This championship now has over thirty registered competitors, a figure which is expected to increase over the season.

BSW Motorsport is based at Fawkham, just three miles from Brands Hatch. The company specialises in building,

maintaining and tuning turbo and performance cars. BSW have a wealth of experience in the preparation of both race engines and race cars.

For further information call Mark Wright on 01474 700052 or visit their website at www.bswmotorsport.co.uk



Steve Luscombe

Car Displays



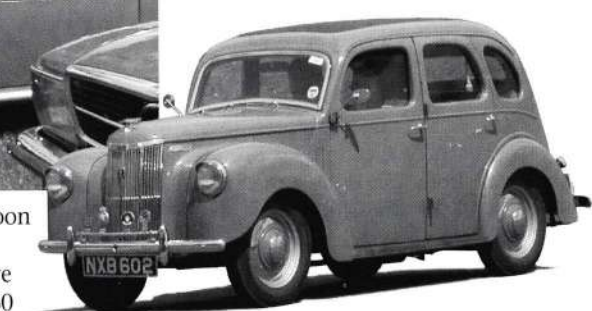
Custom Cars

G Littlemore	1948 Chevrolet Fleetmaster
G Cowie	1929 Ford A Pickup
R Mc Cabe	1982 V.W Transporter
J Densham	1991 Cobretti Viper 4 Cobra
B Slater	1942 Dodge Carvall
	1959 Hotkiss Jeep

Classic Cars

S Smith	1957 Rover P4
P Friday	1971 Rover 2000tc
C Tring	1995 Tvr Chimeara
A Clark	1985 Mercedes 500sl
D Bodiam	1959 Rover 100
W Love	1969 Rover Coupe P5
J Foxwell	1973 Rover 3500s P6
W Crow	1949 Rover P3 75 Ss
T Jenkins	1983 Porche 944 Lux
J Homer	1971 Landrover S111 88
R de Garston	1927 Lagonda 16/65
T Keeler	1961 Rover 100
R Felton	1969 MGC Roadster
M Callaway	1969 MG Roadster
J Mepsted	1962 MG A Mk11
J Cheeseman	1957 Austin Metropolitan
Mr Cowie	1970 Jaguar E Type Roadster
Mrs Cowie	1953 XK120 Roadster
J Olbrechts	1965 Ford Mustang

R Vickery	1932 Austin Seven Box Saloon
D Skates	1966 Triumph Herald
J Clark	1958 Austin Healey Frogeye
E Brown	1970 Triumph Herald 13/60
M&B Kuschel	1953 Cadillac Coupe De Ville
T Restell	1954 Morris Cowley
P Mc Master	1982 Jaguar XJS
B Wray	1974 Vauxhall Firenza
P Dunk	1986 Mini Convertable
P Cork	1973 Jaguar E Type V 12
J Gooding	1986 Ford Escort Gartrac



Toyota Mr2 Mk1 Club

A Cayzer	1988 T Bar
J Hutton	1988 T Bar
T Natton	1988 Coupe
M Bagley	1985 Coupe
D Price	1987 T Bar
A Bonnette	1985 Coupe
N Challenor	1985 Coupe

Club Displays

South Eastern Vintage & Classic Vehicle Club

R Dowding	1966 Gordon-Keeble Gk1
G Overy	1964 Daimler Sp 250

Ford Anglia 105e Owners Club

A Humphrey	1967 Deluxe
A Wilkinson	1965 Deluxe
J Castell	1964 Deluxe
J Colyer	1960 Base
W Ridge	1965 Deluxe
M Brown	1964 Super
L Terry	1962 Deluxe
G Spong	1965 Deluxe



Goodridge

Sponsors of the John Taylor Handicap Championship

Goodridge have confirmed their support of the John Taylor Handicap. For each championship round from the 6th May the Winner of the race will receive a £75 gift voucher for Goodridge products, 2nd will win a voucher for £50 and third will win a voucher for £25. In addition Goodridge have offered all SEMSEC members a 25% discount on their product range.

To find out more about Goodridge visit their website at

www.goodridge.net.



Membership Form

I would like to apply for membership of the South East Motor Sports Enthusiasts Club.

1. DETAILS OF APPLICANT

Name:

Address:

Post Code:

Tel: (Home)

(Work)

Type of car(s) owned:

2. INTERESTS

Competitor / Official / Marshal (circle those appropriate)

Competition Car Formula / Type of race entered

Championships (which registered for)

3. DO YOU REQUIRE COPIES OF TWMC/SEMSEC CHAMPIONSHIP REGULATIONS AND REGISTRATION FORMS?

YES/NO (delete as appropriate)

If YES which championships: (circle those appropriate below)

Saloon / Special & Silhouette / Sports Car / Saloon & Sports Car Handicap /
Up to 1600cc Single Seater / Sprint

4. TYPE OF MEMBERSHIP

- Discounted non-racing membership for marshals £ 7.50 (first year subject to conditions)
Non-racing Membership £ 12.50 (per annum)
Racing Membership £ 25.00 (per annum)

5. I ENCLOSE A CHEQUE/POSTAL ORDER PAYABLE TO THE 'SOUTH EAST MOTOR SPORTS ENTHUSIASTS CLUB'

for £

Please send all membership applications to: Lorraine Greenfield, Membership Secretary, SEMSEC, Greenfields, 16 Saxonbury Close, Crowborough, East Sussex TN6 1EA.

The South East Motor Sports Enthusiasts Club is a company limited by the guarantee of its members up to a limit of £1.00

Ronnie Woods Memorial Trophy

The 'RONNIE WOOD MEMORIAL TROPHY' will be presented to the competitor who in the opinion of a panel of Judges, has campaigned a tidy well prepared car on a shoestring budget with a competitive showing. As well as receiving the Ronnie Woods Memorial Trophy, held for 11 months, the winner will receive a replica and an £80.00 cash award. Last year this trophy was won by Nathan Mills.

The Ronnie Woods Memorial Trophy is an accumulative award in memory of Ronnie who was tragically killed at Silverstone in 1985.

Ronnie was a Kent motorsport enthusiast who lived in Gravesend and successfully campaigned a Modsports/GT Ginetta G15 during the early 1980's at various circuits around the country. He had quite a few outright and class wins at Lydden during that time, the circuit suiting the nimble-ness of this car. It is therefore appropriate that this award be associated with Lydden Silhouette/GT racing. The Trophy will be presented to the competitor in the Lydden series who competes in the style and manner that was typified by Ronnie.

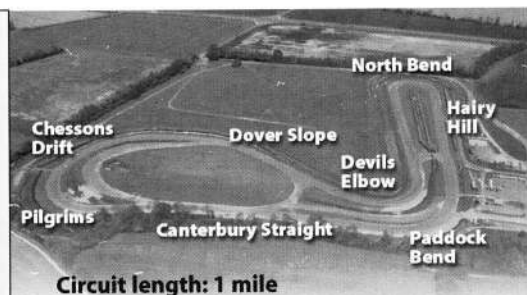


MG MOSS Thoroughbred Sports Car Championship - 1st June Lydden

Lydden Circuit

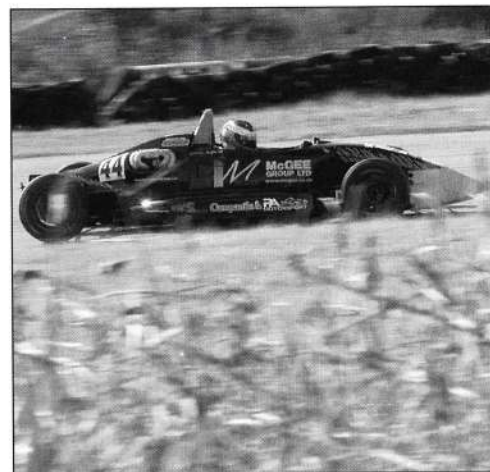
Lap Speed Chart

Time secs	Speed mph	Time secs	Speed mph	Time secs	Speed mph	Time secs	Speed mph	Time secs	Speed mph	Time secs	Speed mph
43.0	83.72	45.9	78.43	48.8	73.77	51.7	69.63	54.6	65.93	57.5	62.60
43.1	83.53	46.0	78.26	48.9	73.62	51.8	69.49	54.7	65.81	57.6	62.50
43.2	83.33	46.1	78.09	49.0	73.47	51.9	69.36	54.8	65.69	57.7	62.39
43.3	83.14	46.2	77.92	49.1	73.32	52.0	69.23	54.9	65.57	57.8	62.28
43.4	82.95	46.3	77.75	49.2	73.17	52.1	69.09	55.0	65.45	57.9	62.17
43.5	82.76	46.4	77.59	49.3	73.02	52.2	68.96	55.1	65.33	58.0	62.06
43.6	82.57	46.5	77.42	49.4	72.87	52.3	68.83	55.2	65.21	58.1	61.96
43.7	82.38	46.6	77.25	49.5	72.73	52.4	68.70	55.3	65.09	58.2	61.85
43.8	82.19	46.7	77.09	49.6	72.58	52.5	68.57	55.4	64.98	58.3	61.74
43.9	82.00	46.8	76.92	49.7	72.43	52.6	68.44	55.5	64.86	58.4	61.64
44.0	81.82	46.9	76.75	49.8	72.29	52.7	68.31	55.6	64.77	58.5	61.53
44.1	81.63	47.0	76.60	49.9	72.14	52.8	68.18	55.7	64.63	58.6	61.43
44.2	81.45	47.1	76.43	50.0	72.00	52.9	68.05	55.8	64.51	58.7	61.32
44.3	81.26	47.2	76.27	50.1	71.86	53.0	67.92	55.9	64.40	58.8	61.22
44.4	81.08	47.3	76.11	50.2	71.71	53.1	67.79	56.0	64.28	58.9	61.12
44.5	80.90	47.4	75.95	50.3	71.57	53.2	67.66	56.1	64.17	59.0	61.01
44.6	80.72	47.5	75.79	50.4	71.43	53.3	67.54	56.2	64.05	59.1	60.91
44.7	80.54	47.6	75.63	50.5	71.29	53.4	67.41	56.3	63.94	59.2	60.81
44.8	80.36	47.7	75.47	50.6	71.15	53.5	67.28	56.4	63.82	59.3	60.70
44.9	80.18	47.8	75.31	50.7	71.01	53.6	67.16	56.5	63.71	59.4	60.60
45.0	80.00	47.9	75.15	50.8	70.86	53.7	67.03	56.6	63.60	59.5	60.50
45.1	79.82	48.0	75.00	50.9	70.72	53.8	66.91	56.7	63.49	59.6	60.40
45.2	79.65	48.1	74.84	51.0	70.88	53.9	66.79	56.8	63.38	59.7	60.30
45.3	79.47	48.2	74.69	51.1	70.45	54.0	66.66	56.9	63.26	59.8	60.20
45.4	79.30	48.3	74.53	51.2	70.31	54.1	66.54	57.0	63.15	59.9	60.10
45.5	79.12	48.4	74.38	51.3	70.17	54.2	66.42	57.1	63.04	60.0	60.00
45.6	78.95	48.5	74.23	51.4	70.03	54.3	66.29	57.2	62.93		
45.7	78.77	48.6	74.07	51.5	69.90	54.4	66.17	57.3	62.82		
45.8	78.60	48.7	73.92	51.6	69.76	54.5	66.05	57.4	62.71		



Circuit length: 1 mile

Lydden International Motor Racing Circuit
Wotton Canterbury, Kent Tel: 01304 830557



Tunbridge Wells Motor Club's

All Circuit **TWMC** 2002 SPRINT CHAMPIONSHIP

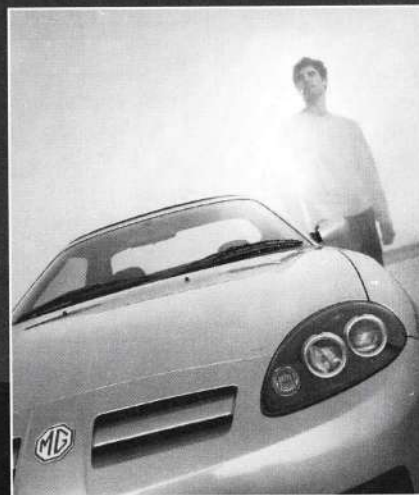
- 14 rounds
- 2 Circuits: Goodwood and Lydden
- Results sent after every round
- 'Sprint Update' newsletter with reports on all rounds
- On-line information and results at: www.twmc.org.uk
- Download regulations and results from the website



Contact: Gary Goodwin 01892 516365 all_circuit@twmc.org.uk

Pictures from today's event will be available from SEMSEC's website:

www.semsec.org.uk



The stunning MG Rover range is in our showroom. Call now and arrange your test drive.



Barretts

www.barrettskent.co.uk

Broad Oak Road
Canterbury
tel: 01227 864455