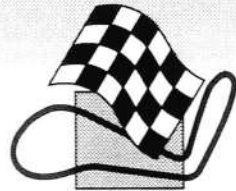
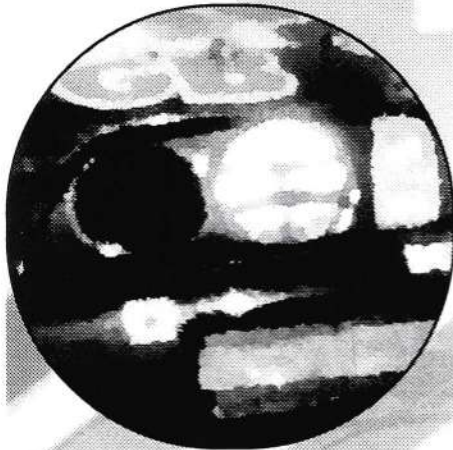




Family Fun Day

Race meeting



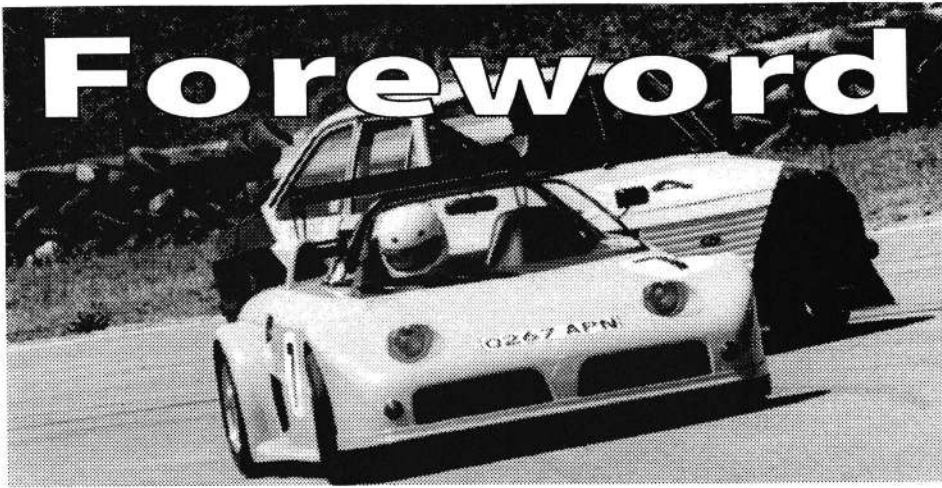
SEMSEC



2nd July 2000

Official Programme £1 - MSA Permit No. 00978

Foreword



Today the Lydden Motor Racing Circuit pays host to a wide variety of attractions beside the usual track action. Take a ride on a World Speed Record holding JCB, a 6 wheel drive all terrain Argocat or a Children's Go Kart. We have fair ground attractions, face painting, bouncy castle, classic and custom car displays and numerous motor club displays.

On the track the South East Motor Sport Enthusiasts Club (SEMSEC) will be running 9 races for Single Seaters, Sports Cars and Saloons. A special treat for today is the 5 litre AC Cobras and 'D' & 'E' type Jaguars of the Sports Racing & GT Championship. Competitors in the very popular Kent County Formula Ford Championship return for their second visit to a SEMSEC race meeting this year and with an expected full entry in the AstraTech Single Seater Championship race we should see plenty of action from our open wheel racers.

Today sees is the third of nine rounds from the Credit Professionals Sports Car Championship and TWMC Lydden Silhouette Saloons & Sports Championship. The Formula One Motorsport Saloon Car Championship is normally one of the best supported Lydden Championships and features a wide variety of cars. Regular race leader Rod Birley will hard to beat, but there will be very good racing for the top positions and the class honours. Since the championship points are awarded for class finishing position it is those positions which are more important than the race win for deciding the championship winner at the end of the year. The championships are based predominately around races here at Lydden, but in three weeks time they will also feature a race at Brands Hatch.

The final race of the day will be the John Taylor Handicap. Plenty of overtaking is guaranteed with the fastest cars completing one or two laps more than the slowest. These races can be difficult to follow but in the later stages the cars start bunching together as, in theory, all the cars should finish across the line together. As they start to bunch together watch the start line to see who is shown the last lap board first. Often the race can be won or lost on the final lap.

Following the last practice the classic and custom cars will take to the track for a few laps. This is a good opportunity to see the wide variety of cars we have here today before the racing starts. The hot air balloons are due to take off shortly after racing finishes at 6pm so don't rush off and miss this spectacle.

We hope you enjoy today's motor sport from the South East Motor Sports Enthusiasts Club. You can find out more about the club, it's associated clubs and the motor sport they each run by visiting the club stand in the lower paddock area close to the main paddock offices. Future SEMSEC meetings at Lydden are on Saturday 2nd September, Saturday 23rd September and Saturday 28th October.



SPECIAL NOTICE - Dogs are allowed in the circuit grounds, but they must be kept securely on a lead, they are not allowed in the Paddock Area.

Note - It is a condition of the planning permission granted to Lydden Circuit that there be no engine noise prior to 9.00am on weekdays and Saturdays, and 12.30 on Sundays, and after 6.00pm on any day. Will competitors please comply. Furthermore competitors are forbidden to, and spectators are requested not to, approach or leave the circuit via Wootton Village, enter and exit via A2 only.

Spectator Notices

Please do not leave litter about the grounds, place it in the receptacles provided or take it home with you. Remember one piece of litter could be FATAL.

Please drive with care and consideration for others when leaving the circuit, this is a race track the road outside is not.

Prohibited Area Notice

The public are not permitted in the area where the notices are displayed. Any fences or gates are there for your protection. Any person found trespassing or wilfully damaging trees, fences etc WILL BE PROSECUTED BY THE CIRCUIT.

NOTICE - WARNING TO THE PUBLIC MOTOR SPORT IS DANGEROUS

It is a condition of admission that all persons having any connection with the promotion and/or organisation and/or conduct of the meeting, including the owners of the land and the drivers and owners of the vehicles and passengers in the vehicles, are absolved from all liability arising out of accidents causing damage or personal injury (whether fatal or otherwise) however caused to spectators or ticket holders.

In the event of an accident, PLEASE REMAIN WHERE YOU ARE. There are doctors in attendance at this meeting as well as a trained Rescue Unit and Red Cross Personnel.



RACEWEAR

Lowest Prices Guaranteed!!

**South East England's leading Motorsport
Equipment Suppliers**

Formula One Motorsport Ltd, Main Road, West Kingsdown, Sevenoaks, Kent TN15 6EU
Tel: 01474 852271 & 853258 Fax: 01474 853808

Acknowledgements

The South East Motor Sport Enthusiast Club would like to thank the following:
Formula One Motorsport, Credit Professionals, Astratech, Tunbridge Wells Motor Club, Rochester Motor Club, Borough 19 Motor Club and all officials and marshals at today's event.

Race Event Permit No: 00978

Held under the General Regulations of The Motor Sports Association (incorporating the provisions of the International Sporting Code of the FIA) the Supplementary Regulations.

Officials

SENIOR OFFICIALS:

STEWARDS: TBA (appointed by the MSA)

Neil Benfield, Norman Redhead - (appointed by the Organising Club)

Senior Clerk of the Course :

Clerk of the Course:

Deputy Clerk of the Course(Race):

Chief Marshal:

Chief Incident Marshal:

Chief Judge:

Chief Scrutineer(Race):

Chief Timekeeper(Race):

Chief Medical Officer:

I/C Rescue Unit:

Chief Observer:

Secretary of the Meeting:

Noise Inspector:

Gary Turtell

Mervyn Kennard

Alan Rees

Kevin White

Terry Harrison

Steve Goodwin

John Winder

John Williams

Dr D Hubbard

Paul Butt

Gary Goodwin

Nikki Stevens

Howard Shaddock

Timetable

Race Practice from 12.30 hrs

Classic Car & Custom Car Demonstration Laps

First Race approximately 15.15hrs

Practice/Race order:

- 1 South East Sports & Saloon Car Challenge Race
- 2 Kent County Formula Ford Championship (Kent Class) Race
- 3 Formula One Racewear Saloon Car Championship Race
- 4 Credit Professionals Sports Car Championship Race
- 5 AstraTech Single Seater Championship Race
- 6 TWMC Lydden Silhouette Saloon Car Championship Race
- 7 Sports Racing & GT Championship Race
- 8 Kent County Formula Ford Championship (Zetec Class) & Single Seater Trophy Race
- 9 John Taylor Handicap Race

**HOT AIR BALLOON TAKE OFF at 18.15hrs
(Weather Permitting)**

SEMSEC - South East Motor Sports Enthusiasts Club

The Club was originally formed in 1994 to promote race and rallycross meetings at Lydden Circuit. SEMSEC was formed as a joint venture between the British Automobile Racing Club London & Home Counties Centre, the Tunbridge Wells Motor Club and several prominent local motor sport enthusiasts. After a slow start interest grew and has been built upon ever since.

In 1995 the management of the club was taken over by Tunbridge Wells Motor Club (TWMC) who invited other local clubs to become involved. Rochester Motor Club and Borough 19 Motor Club took up the offer and the three clubs supply the officials for SEMSEC and each runs a Sprint as part of the events. In 1995 the Lydden Marshals Club membership was amalgamated with SEMSEC and the club has grown from strength to strength ever since.

This year the Club will run 6 race meetings at Lydden Circuit including today's event with 5 of these supported by sprints. Meetings have already taken place in April and June with future events planned for:

Saturday 2nd September

Saturday 23rd September

Saturday 28th October

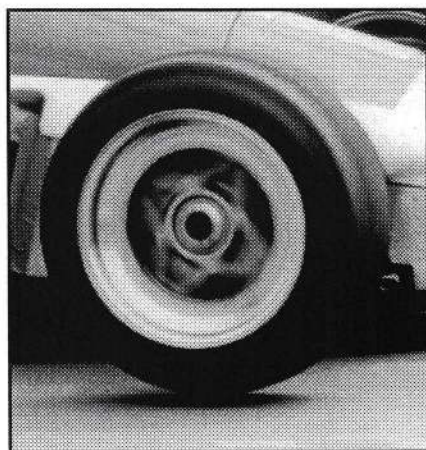
The meeting on Saturday 28th October will provide the final rounds of each of the five Lydden Championships together with the last event in the South East Sports and Saloon Challenge.

Although managed by Tunbridge Wells and assisted by Rochester and Borough 19 Motor Club's, SEMSEC is a true Lydden based club with all its meetings taking place at the circuit many of SEMSEC's members are local as well as an increasing number of its organisers. SEMSEC also has the very valuable support of regular marshals many of whom are full members of SEMSEC. There are regular monthly club nights held at the Phoenix Railway Club, Crabble Road, Dover on the second Tuesday of each month from about 8pm and new members and prospective members are always welcome to attend.

If you would like to join the club either to race, marshal, officiate or perhaps just as a social member, then there is a membership application included in the programme. Alternatively come along to one of the monthly club nights. Racing membership is just £25.00 per annum whilst non-racing membership is £12.50 per annum. As a SEMSEC member you will also be entitled to take part in many of the Tunbridge Wells Motor Club's events and you will receive copies of both club's newsletters giving details of forthcoming events and reports on past events.

We hope you have an enjoyable day at today's event and will want to support our club by joining us as a member.





Formula One - the sponsors of the Saloon Car Championship

We are most grateful for the support provided for our 2000 saloon car championship by Formula One Motorsport of West Kingsdown. Formula One sell all manner of road and motor sport parts, accessories and equipment. They are situated at Main Road, West Kingsdown, not far from the main entrance to Brands Hatch and are well worth a call if you are looking for that little bit extra performance from your race car or just a useful accessory to your road car.

As part of the support for the 2000 Formula One Motorsport Saloon Car Championship the company has very kindly offered a voucher to spend at their shop in West Kingsdown worth £350 to the championship winning driver.

Formula One Accessories and Racewear can be contacted on 01474 852271 & 853258, Fax 01474 853808.

Race 1



SOUTH EAST SPORTS & SALOON CAR CHALLENGE RACE - 12 LAPS

Class B - Silhouette GT Saloons over 1600cc, Production Kit Cars over 1700cc and Production based Sports Cars over 2500cc

No.	Driver	Make	Model	Engine/cc	Home Town
27	Nick Taylor	Gardener	Cobra	Chevrolet 6100	Nottingham
55	Lol Pilfold	Caterham	Seven	Vauxhall/2000	East Preston
65	Stephen Storey	Caterham	Seven	Vauxhall 2000	Gerrards Cross

Class C - Special Saloons, Production Based Sports Cars up to 2500cc and Forced Induction Modified Production Saloons and Silhouettes GT Saloons up to 1600cc and Production Kit Cars up to 1700cc

No.	Driver	Make	Model	Engine/cc	Home Town
3	Steve Govett	Rover	220 Turbo	Rover 1998	Sittingbourne
4	Rod Birley	Ford	Escort WRC	Cosworth 2000T	West Kingsdown
76	John Bird	Caterham	Super 7	Ford Zetec 1800	Cophthorne

Class D - Modified Production Saloons

No.	Driver	Make	Model	Engine/cc	Home Town
51	John Woods	Vauxhall	Chevette	Gemini 2000	Higham
54 (D)	Steve Weatherley	Ford	Sierra Sapphire	Pinto 2000	St Leonards
66	Alex Thorogood	Vauxhall	Chevette HSR	Vauxhall 2600	Penge
95	Peter Thurston	Ford	Escort V8	PTR 5000	Westmarsh

Race result	1st	2nd	3rd	4th	5th	6th
-------------	-----	-----	-----	-----	-----	-----

Race 2



KENT COUNTY FORMULA FORD CHAMPIONSHIP RACE (Kent Class) - 12 LAPS

No.	Driver	Make	Model	Engine/cc	Home Town
1	Bret Francis	Swift	SC93F	Auriga 1600	Australia
3	Christian Akerstrom	Swift	SC95F	Greenwood 1600	Sweden
4	Rui Santos	Swift	SC93F	Bold 1600	Portugal
7	Dave Connor	Jamun	M92	Auriga 1600	Brentwood
8	Chris Glazier	Swift	SC92F	Auriga 1600	Gillingham
10	Mike Ayton	Swift		Bellchamber 1600	Theydon Bois
12	David Richards	Van Dieman	RF91	Auriga 1600	Chislehurst
13	Simon Pruce	Ray	GR98K	Bold 1600	Maidstone
15	Richard Mansell	Van Dieman	RF90	Auriga 1598	Redhill
16	Mark Byatt	Swift	SC92	Auriga 1600	Teddington
25	Marc Sawyer	Van Dieman	RF90	Auriga 1600	Old Coulsdon
27	Paul Jarvis	Swift		Bellchamber 1600	Higham
45	Kevin Nolan	Mondale	M93	Minister 1600	Sevenoaks
62	Colin Johnson	Reynard	RF89	Minister 1600	Hornchurch
67	John Hagen	Reynard		Auriga 1600	Silchester
68	Chris Pennington	Van Dieman	RF90	Auriga 1600	Alton

Race result	1st	2nd	3rd	4th	5th	6th
-------------	-----	-----	-----	-----	-----	-----

Race 3



FORMULA ONE RACEWEAR SALOON CAR CHAMPIONSHIP RACE - 12 LAPS

Class A - Saloon & Hatchback Cars exceeding 2000cc and Forced Induction Saloons & Hatchback cars exceeding 1600cc

3	Steve Govett	Rover	220 Turbo	Rover 1998	Sittingbourne
4	Rod Birley	Ford	Escort WRC	Cosworth 2000T	West Kingsdown
58	Brian Wray	Vauxhall	Chevette	Jon Mowatt 2300	Edenbridge
66	Alex Thorogood	Vauxhall	Chevette HSR	Vauxhall 2600	Penge

Class B - Saloon & Hatchback Cars exceeding 1600cc up to 2000cc, Forced Induction Saloon & Hatchback Cars up to 1600cc, Roadgoing Saloon & Hatchback Cars exceeding 2000cc and Forced Induction Roadgoing Saloon & Hatchback Cars exceeding 1600cc

7	Brian Leonard	Mazda	RX7	WGT 1964	Blindley Heath
8	Craig Dawson	Peugeot	205 GTI	Peugeot 1935	Ashford
54 (D)	Steve Weatherley	Ford	Sierra Sapphire	Pinto 2000	St Leonards

Class C - Saloon & Hatchback Cars up to 1600cc, Road Going Saloon & Hatchback Cars up to 2000cc, Forced Induction Road Going Saloon & Hatchback Cars up to 1600cc

26	Bill Richards	Rover	Mini	Bill Richards 1400	Brookland
51	Andrew Gatfield	Vauxhall	Nova	Vaux/AGME 1598	Ongar
67	Raymond Barrow	Ford	Escort	Ford 1600	Brighton
71	Jamie Henderson	Rover	Mini	Rover/Hodson 1380	Aylesford
87	Victor Smith	Morris	Mini	BMC A	Deal

Class D - Standard Saloon & Hatchback Cars up to 1600cc

19	Peter Osborne	MG	Metro	BL 1275	Rye
----	---------------	----	-------	---------	-----

Race result	1st	2nd	3rd	4th	5th	6th
-------------	-----	-----	-----	-----	-----	-----

Race 4



CREDIT PROFESSIONALS SPORTS CAR CHAMPIONSHIP - 12 LAPS

Class A - Roadgoing Sports Cars up to 2000cc and Mass Production based Sports Cars up to 1700cc.

62	Ron Gee	MG	B Roadster	BMC/P Burgess 1850	Wingham
----	---------	----	------------	--------------------	---------

Class B - Roadgoing Sports Cars over 2001cc, Mass Production based Sports Cars over 1701cc and Caterham '7' type cars up to 1700cc.

34	Lee Welch	Westfield	Seven SE	Ford Crossflow 1700	Bracknell
----	-----------	-----------	----------	---------------------	-----------

Class C - 'Caterham 7' type cars over 1700 cc.

33	John Dewing	Westfield	SE1	Vauxhall 2000	West Malling
55	Lol Pilfold	Caterham	Seven	Vauxhall/2000	East Preston
76	John Bird	Caterham	Super 7	Ford Zetec 1800	Copthorne

Class D - Other Kit Cars and Sports Cars of limited production runs excluding sports racing cars and cars built for one make sports car formulae (i.e. Radicals, Global Lights etc).

7	Trevor Phillips	Sylva	Clubman Mk7	Cosworth/Baines 1998	Crowborough
27	Tony McQueen	Davrian	Mk7	Sunbeam-Card/Sykes 998	Waterlooville
74	Peter Wilks	Juno	Stealth	Pinto 1993	Orpinaton

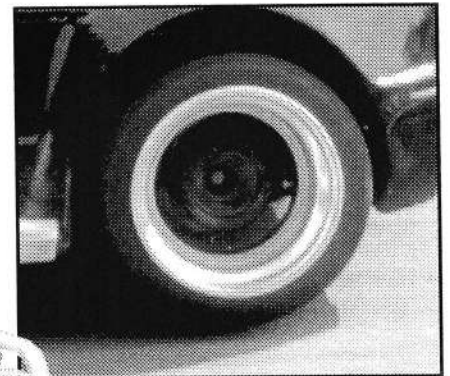
Race result	1st	2nd	3rd	4th	5th	6th
-------------	-----	-----	-----	-----	-----	-----

Credit Professionals Support the Sports Cars

SEMSEC and TWMC are delighted to announce that they have obtained sponsorship of the TWMC Sports Car Championship for next season from Credit Professionals Ltd of Crowborough, East Sussex. The owner of the company, Trevor Phillips, is a regular competitor in the series with his metallic cherry pink Sylva Clubman MkIV and last season won the Class D category.

Trevor's company helps businesses to increase their profitability through better management of their credit control. He is Vice President of The Institute of Credit Management, the professional body for credit managers and is a regular lecturer and presenter on the subject. Whether it is collecting a single debt, managing an entire sales ledger or providing training, staff or consultancy, CPL can help.

As part of credit professionals support the overall Credit Professionals Sports Car Championship winner will receive £250 and the runner up will receive £100.



Race 5

ASTRATECH SINGLE SEATER CHAMPIONSHIP- 12 LAPS

Class A - Formula Ford 1600 Kent Engined Cars & Formula First Cars

4	Rui Santos	Swift	SC93F	Bold 1600	Portugal
7	Dave Connor	Jamun	M92	Auriga 1600	Brentwood
8	Chris Glazier	Swift	SC92F	Auriga 1600	Gillingham
12	David Richards	Van Dieman	RF91	Auriga 1600	Chislehurst
16	Mark Byatt	Swift	SC92	Auriga 1600	Teddington
18	Dan Black	Elden	MK30	Searle 1600	Eastbourne

Class D - Single Seater racing cars up to 2000cc (including single seater racing cars complying to MSA Sprint & Hillclimb regulations)

1	Richard Carrison	Van Dieman	FR95	Minister 2000	Ashford
5	Barry Andrews	Formula Renault	N D Hill 1700	Herne Bay	
57	Iain Morton	Formula Renault STRYX	BD 96	Vegantune 2000	London
64	Charles Harvey-Kelly	Formula Vauxhall Lotus	Vauxhall 2000	Kemsing	
70	John Lord	Jedi		Yamaha 998	Bookhm
83	Chris Farr	Van Dieman	RF85	Connaught 1600	Bexleyheath

Race result	1st	2nd	3rd	4th	5th	6th
-------------	-----	-----	-----	-----	-----	-----

Race 6

TWMC LYDDEN SILHOUETTE SALOON CAR CHAMPIONSHIP RACE - 12 LAPS

Class A - Prototype Sports cars & Sports Racing Cars, Sports Cars built for one make sports car series, up to 2000cc:

7	John Oxborrow	OX7		Connaught 2000	Seaford
54	Robin Harvey	Ray		Boss Ford 1700	Billingshurst

Class B - Saloons 2001cc and above and all Forced Induction engined saloons

4	Rod Birley	Ford	Escort WRC	Cosworth 2000T	West Kingsdown
44	Tony Sharpe	Ford	Cortina Mkl	Cosworth 1995T	Hollingbourne

Class C - Saloons 1501 - 2000cc (excluding forced induction engined saloons).

31	Tom Carey	Vauxhall	Chevette	Ford 2000	Gravesend
----	-----------	----------	----------	-----------	-----------

Class D - Saloons up to 1500cc (excluding forced induction engined saloons)

6	Mary Grinham	Maquire	Mini	BL1300	Barnehurst
26	Bill Richards	Rover	Cosworth Metro	Cosworth 1300	Brookland

Class E - Steel Bodied Saloons up to 2000cc

51	John Woods	Vauxhall	Chevette	Gemini 2000	Higham
----	------------	----------	----------	-------------	--------

Race result	1st	2nd	3rd	4th	5th	6th
-------------	-----	-----	-----	-----	-----	-----

Race 7

SPORTS RACING AND GT CHAMPIONSHIP RACE - 12 LAPS

Class A - Cars with V configuration engines of two valve per cylinder min capacity 2800cc max 7000cc

5	Mark Jordan	RAM SC	Cobra	Chevrolet 6400	Estree
10	Tony Clinkard	Cobra	Replica	Chevrolet 5700	Harwell
27	Nick Taylor	Gardener	Cobra	Chevrolet 6100	Nottingham

Class B - Front/Mid/Rear engined cars upto six cylinders max capacity 4235cc

17	Mike Walker	Porsche	911	Neil Bainbrige 3500	Bristol
70	Henry Lawson	Jaguar	D Type Replica	4235	Henfield

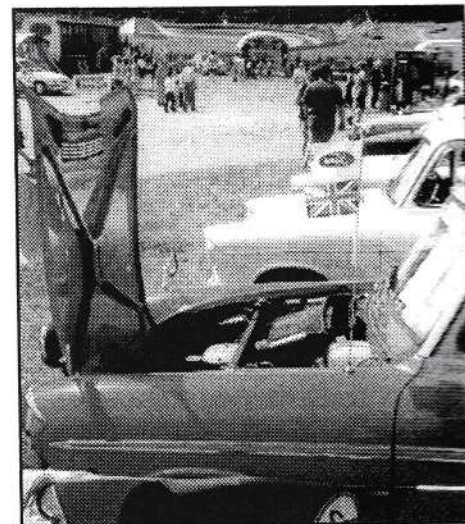
Class C - Front/Mid/Rear engined cars upto six cylinders max capacity 2000cc

7	Graham Paddock	Lotus 23 replica 23B	Ford Crossflow	Henley-on-Thames	
20	Alan Wilkinson	Westfield Eleven	BMC A Series	St Albans	

Class D - Ginetta upto 1220cc

8	Paul Morgan	Ginetta	G15	Rootes/Carter 998	Clafont St Peter
19	Rob Morgan	Ginetta	G15	998	Stoke Poges

Race result	1st	2nd	3rd	4th	5th	6th
-------------	-----	-----	-----	-----	-----	-----



Club Stands

Throttlers
 White Cliff M G Owners Club (1108s)
 Sevenoaks & District Motor Club
 750 Motor Club
 Sunbeam Rapier Owners Club
 Avengers & Sunbeam Owners Club
 Riley Motor Club
 Austin Healey Club
 Panther Enthusiasts Club UK
 Nissan Turbo Owners Club
 London & Surrey Mini Owners Club
 T R Register Kent Group
 Group B Car Club
 Toyota MR2 (MKI) Register
 Ford Anglia 105E Owners Club
 Sporting Escort Owners Club
 Renault Owners Club



Race 8



KENT COUNTY FORMULA FORD CHAMPIONSHIP RACE (Zetec Class) and Single Seater Trophy Race - 12 LAPS

Trophy Race

Class A - Formula Ford 1600 Kent Engine Cars & Formula First Cars

4	Rui Santos	Swift	SC93F	Bold 1600	Portugal
12	David Richards	Van Dieman	RF91	Auriga 1600	Chislehurst
13	Simon Pruce	Ray	GR98K	Bold 1600	Maidstone
16	Mark Byatt	Swift	SC92	Auriga 1600	Teddington

Class C - Formula Ford 2000 Cars

51	Stuart Olley	Royale	RP27	Ford 2000	Ashstead
----	--------------	--------	------	-----------	----------

Class D -- Single Seater racing cars up to 2000cc (including single seater racing cars complying to MSA Sprint & Hillclimb regulations)

5	Barry Andrews	Formula Renault	N D Hill 1700	Herne Bay	
57	Iain Morton	Formula Renault STRYX	BD 96	Vegantune 2000	London
64	Charles Harvey-Kelly	Formula Vauxhall Lotus	Vauxhall 2000	Kemsing	
83	Chris Farr	Van Dieman	RF85	Connaught 1600	Bexleyheath

Kent County Formula Ford Championship Race (Zetec Class)

6	Dave Hardisty	Van Dieman	RF99	Auriga1800	Goose Green
15	Neil Tofts	Swift	SC982	Anderson 1800	Broxborne
24	Matt Hayes	Jamun	M97Z	Minister	Dover

Race result	1st	2nd	3rd	4th	5th	6th
-------------	-----	-----	-----	-----	-----	-----

Race 9



JOHN TAYLOR HANDICAP CHAMPIONSHIP RACE - 12 LAPS

4	Rod Birley	Ford	Escort WRC	2000T	West Kingsdown
27	Nick Taylor	Gardener	Cobra	Chevrolet 6100	Nottingham
44	Tony Sharpe	Ford	Cortina Mkl	Cosworth 1995T	Hollingbourne
54 (D)	Steve Weatherley	Ford	Sierra Sapphire	Pinto 2000	St Leonards
55	Lol Pilfold	Caterham	Seven	Vauxhall/2000	East Preston
62	Ron Gee	MG	B Roadster	BMC/P Burgess 1850	Wingham
76	John Bird	Caterham	Super 7	Ford Zetec 1800	Copthorne

Race result	1st	2nd	3rd	4th	5th	6th
-------------	-----	-----	-----	-----	-----	-----

So, you need to increase profits?

We have over 30 years experience in successfully increasing profitability for businesses through reducing bad debts, identifying high risk customers and getting clients money back into their own banks!

CREDIT PROFESSIONALS LTD

Credit Management Services

SERVICES INCLUDE:

- Cash Acceleration Programmes • Financial Health Checks • Recovery of difficult debts
- Credit Risk Assessments • Consultancy
- Litigation Services • Staff Recruitment
- Collections Software



Trevor Phillips FICM, FFA
 PO Box 83, Crowborough
 TN6 1WH
 Phone: 01892 665806
 Fax: 01892 610353
 Email: credit@btinternet.com
 www.credit-manager.co.uk

Y2000 SEMSEC Sponsors for: The Credit Professionals Sports Car Championship



**TWMC,
SEMSEC &
BARC SEC**

Lydden Championships

Tunbridge Wells Motor Club has three Lydden Racing Championships one of which is jointly promoted by the British Automobile Racing Club South East Centre. The South East Motor Sports Enthusiasts Club promotes the John Taylor Saloon and Sports Car Handicap Championship and jointly promotes the Astratech Single Seater Championship with BARC South East Centre.

Astratech Single Seater Championship

As its name suggests this championship is for Single Seaters. This year we are pleased to again have the support of Astratech, a firm specialising in the manufacture and supply of specialist race timing equipment.

There are classes for Formula Ford 1600's, Zetec Formula Fords, Formula Ford 2000's and all other single seaters up to 2 litre.

Credit Professionals Sports Car Championship

This year's Lydden sports car championship benefits from the support of Credit Professionals and provides some cash prizes for the overall championship winner and runner up. The championship is for a wide variety of sports cars. It includes a class for Caterham Seven type cars as well as classes for other mass-produced sports cars, 'roadgoing' sports cars and a class for sports cars with a limited production run. This will be the sixth year that TWMC have promoted this championship and it increases in popularity each year. Points are awarded according to class finishing position so the outright race winner may not always be the only high scoring championship contender. The degree of allowable modification to cars is quite large and we wait to see just how competitive some of the new comers to this year's championship are.

FORMULA ONE MOTORSPORT Saloon Car Championship

FORMULA ONE MOTORSPORT return to support the popular Saloon Car Championship. Formula One are retailers of various motoring and motor sport accessories based in West Kingsdown close to Brands Hatch. If you are looking for an accessory for your car call Formula One now on 01474 852271 to get details of their extensive range. The Formula One Motorsport Saloon Car Championship is a combination of the Tunbridge Wells Motor Club and BARC L&HCC Lydden Saloon car championships which were run up until 1998. Both SEMSEC and BARC South East Centre will promote rounds at each of their Lydden meetings during 2000 and there is a special away round to be held at Brands Hatch on 22nd July. This is a championship for saloon and hatchback cars retaining the original engine block and head. Changes to both bodywork and mechanical components are restricted. The class structure caters for cars running on 'slicks' or 'road going' cars using normal road tyres. There is also provision for the inclusion of forced induction saloons and classes are again structured to recognise the power advantage these cars may have. There are restrictions on the type of Turbo unit and intercooler the cars can use. Championship points are awarded according to a competitors class finishing

position, not overall position, so there is plenty of chance for some of the smaller less powerful cars to compete for the overall championship honours. The 1999 champion was Rod Birley and we wait to see if anyone else can challenge his current supremacy in this championship.

TWMC Lydden Silhouette Saloon Championship

The TWMC Lydden Silhouette Championship allows much greater modification to cars than the saloon car championship with many of the cars being space framed. The choice of engines and transmissions is free. The cars should retain the silhouette of an original manufacturer's model but there seems to be a little poetic licence in this area. For the second year we have also allowed home built non commercial sports prototypes to compete in this championship. New for this year we have also introduced a class for special sports racing cars up to a 2000cc limit. This championship is again increasing in popularity and provides some very fine racing. We have also created a class structure which provides the opportunity for some of the steel bodied special saloons to compete and have a chance of overall championship honours.

The John Taylor Handicap Championship

Our Chief Timekeeper at SEMSEC events between 1995 and 1997 was John Taylor and it is John who introduced us to the idea of running a Handicap Saloon and Sports Car race at each of our meetings. Unfortunately John has had to retire from officiating at our events due to work commitments but the championship lives on still carrying his name. This has proved to be a very successful formula and in 2000 continues its full championship status for a series of six races. The aim of this format of racing is to even up all the different power, weight and driver advantages and disadvantages from a wide range of saloon and sports cars. This is done by giving each competitor a time handicap according to his/her known performance. In some cases the slower cars may have a one or even two lap advantage over the fastest cars so having to complete 10 instead of 12 laps. This means that to win the fastest cars may have had to lap the slowest cars twice. This all makes for very exciting racing and whilst you will find it hard to follow at first you can be sure that when the cars all start bunching together the end of the race is not far away because in an ideal world, and if the handicapper got it right, the whole grid should finish across the line together.

Championship Standings



The Credit Professionals Sports Car Championship

Name	Class	Total
Steve Luscombe	A	46
James Bilisland	A	27
Ron Gee	A	17
Mark Burnside	B	26
Andy Young	B	21
Dave Colyer	B	16
John Dewing	C	53
Lol Pilford	C	38
Julian Sage	C	21
Mike Dickson	C	17
Trevor Philips	D	25
Geoff Cain	D	24
Tony McQueen	D	20

2000 Formula One Motorsport Saloon Car Championship

Name	Class	Total
Rod Birley	A	106
Alex Sidwell	A	42
Peter Ashton	A	24
Alex Thorogood	A	36
Craig Dawson	B	102
Steve Weatherley	B	81
Neil Gardener	B	61
Paul Metson	B	35
Neil Bostock	B	23
Raymond Barrow	C	79
Bill Richards	C	83
Steve Govett	C	49
Nick Oakes	C	49
Mark Chandler	C	25
Jamie Henderson	C	22

2000 Silhouette Saloons and Sports Championship

Name	Class	Total
John Oxborrow	A	24
Rod Birley	B	56
Robert Bridger	B	45
Mick Tester	B	19
Peter Thurston	B	16
Tony Sharpe	B	16
Wayne Phelan	B	13
Bill Richards	D	49
Mary Grinham	D	20
John Woods	E	24
Steve Weatherley	E	24

2000 John Taylor Handicap Championship

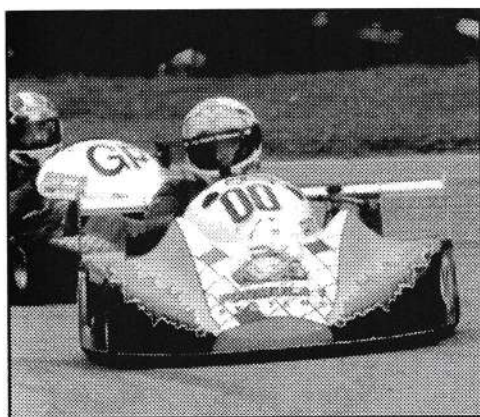
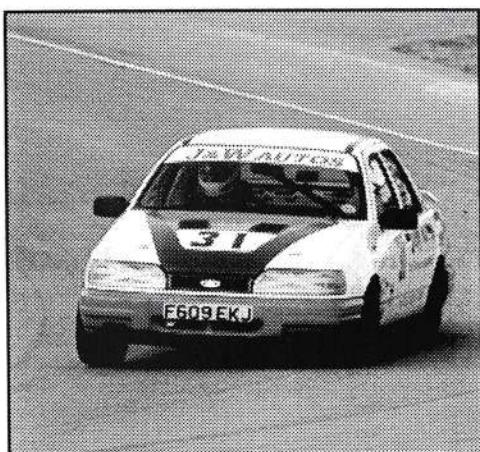
Name	Total
Lol Pilford	36
Rod Birley	31
Wayne Phelan	20
Ron Gee	20
Mark Burnside	19
Andy Young	18
Steve Weatherley	18
Peter Ashton	16
Edward Bridger-Stillie	16
Dave Colyer	15
John Woods	15
Bob Ross	13

2000 Astratech Single Seater Championship

Name	Class	Total
Chris Glazier	A	52
Jon Bennett	A	43
Ben Cooper	A	36
Dave Connor	A	36
Dan Black	A	34
Andy Neate	A	29
Christian Akerstom	A	25
David Richards	A	24
Kevin Nolan	A	20
Colin Goodwin	A	17
Alaistair Crees	A	13
Matt Hayes	B	25
Dave Hardisty	B	20
Stuart Olley	C	48
Ian Osborne	C	24
Richard Carrison	D	71
Barry Andrews	D	67
John Lord	D	45
Charles Harvey-Kelly	D	41
Jensen Lunn	D	33
Richard Purcell	D	28
Jed Filmer	D	23
Andy Utterley	D	20
Iain Morton	D	18
Anthony Wadie	D	14
Jackie Lockyer	D	5

South East Sports and Saloon Car Challenge

Name	Class	Total
Lol Pilford	B	51
Peter Thurston	B	40
Robert Bridger	B	24
Julian Sage	B	20
David Lees	B	20
Lee Welch	B	14
Neil Bostock	B	14
Stephen Storey	B	10
Paul Soames	B	8
Max Izen	B	6
Rod Birley	C	45
Bob Ross	C	24
James Bilisland	C	20
John Woods	C	20
Peter Ashton	C	17
Dave Colyer	C	16
Derek Parker	C	13
Steve Govett	C	11
Steve Weatherley	D	59
Roger Wilkins	D	19
Andrew Gatfield	D	11



Ronnie Woods Memorial Trophy For Silhouettes

The 'RONNIE WOOD MEMORIAL TROPHY' will be presented to the competitor who in the opinion of a panel of Judges, has presented a tidy well prepared car on a relative shoestring budget with a competitive showing. As well as receiving the Ronnie Woods Memorial Trophy to be held for 11 months, the winner will also receive a replica and an £80.00 cash award. Last year this trophy was won by John Woods, Ronnie brother, driving his beautifully prepared and Vauxhall Chevette which John has campaigned in TWMC's Silhouette Saloons Championship for the last 7 years.

The Ronnie Woods Memorial Trophy is an accumulative award in memory of Ronnie who was tragically killed at Silverstone in 1985 whilst racing his Modsports/GT Ginetta G15.

Ronnie was a Kent motorsport enthusiast who lived in Gravesend, and successfully campaigned a Modsports/GT Ginetta G15 during the early eighties at various circuits around the country. He had quite a few outright and class wins at Lydden during that time, the circuit suiting the nimbleness of this car. It is therefore appropriate that this award be associated with Lydden Silhouette/GT racing. The Trophy will be presented to the competitor in the Lydden series who competes in the style and manner that was typified by Ronnie. Namely a car that is well presented, self prepared for the most part and has utilised a 'shoestring' budget.

The Judges will be viewing the cars entered in all the qualifying events throughout the 2000 to decide exactly who will be the winner of 'RONNIE WOOD MEMORIAL TROPHY' will be for this season.

Tunbridge Wells Motor Club

Tunbridge Wells Motor Club (TWMC) traces its origins back to 1911 when it was formed as a Motor Cycling Club. It later added a motor car section and is today entirely devoted to 4 wheels. The club is in its 89th year making it one of the oldest motor clubs in Britain.

TWMC promotes three of the race championships which feature in today's meeting. More details of these Championships are contained elsewhere in this programme.

TWMC is also involved in a wide range of other competitive and social motoring activities. These include Championship Stage Rallies, the Pestalozzi Hillclimb, Sprints, Trials and Autotests. We have a very active social scene with barbecues, a dinner dance, various trips, 10 pin bowling and much more.

TWMC meet on the first Tuesday of each month at the Junction Inn, Station Road, Groombridge, from around 8pm. New and prospective members are always welcome. Single person club membership costs £15.00 per annum whilst family membership is £17.50. For further information about the club phone the Club Chairman, Norman Redhead on 01323 502335.

Rochester Motor Club

Founded in 1912, the club has one of the largest memberships in the South East, with over 300 members. The club is fairly unique in that its activities encompass karting, car and motorcycle events. The ever expanding karting section features four stroke racing with eight classes, from 8 year olds upwards. This section operates under its own promotional banner of the Formula 6 Association. Also Rochester Motor Club, as one of the 3 clubs running the Kent Racing Combine, has long been promoting motorcycle road racing. It is currently promoting a series of 6 Hour Endurance races. The car section is proud to promote events at Lydden and to participate in the promotion of the SEMSEC race series. Annual membership is only:

£8.00 Junior £10.00 Senior £12.00 Joint

The Club has its own Offices at 120, Delce Road, Rochester, Kent ME1 2DT and may be contacted by phone on 01634 841499.

Borough 19 Motor Club

Borough 19 Motor Club was initially formed in the Spring of 1963 and took its name after Bromley and Beckenham became the 19th London Borough. It was formed by schoolmates, workmates, customers and friends of Stoneham's Garage at Eden Park, Beckenham, Kent.

Customers and colleagues at the West Wickham (1936) Garage and Squires Timber joined the Club. Meetings were held at the Eden Park Hotel as were meetings of Eden Park 100 Motor Club. This latter club collapsed and most of its members joined Borough 19 as did several members of the Bromley Motor Club which was soon to suffer a similar fate. Borough 19 Motor Club then became affiliated to the Royal Automobile Club.

The first speed event was an Autocross at Stanstead Farm, Caterham int Whitsun 1964 and later followed by a Road Rally. Borough 19 Motor Club is currently organising events for the clubman and grass roots motorsport enthusiast. It offers Production Car Trials and Autotests for members to enter in their standard road saloon cars. For the Speed enthusiasts the Club organises Autocross and Sprint meetings.

The club meets at the Colyers Arms PH, Station Road, Betsham, near Dartford on the 2nd and 4th Tuesday of every month.

Other events which are very popular with the members are the three local indoor Karting evenings and members also participate in Rallycross, Race Meetings and Rallies.

Membership is only £17 per annum. Members meet twice a month for Club Nights at Beckenham and Dartford. The Club also issues a monthly magazine.

Further membership details and forms can be obtained by telephoning 0181 460 7632.



Lap Speed Chart

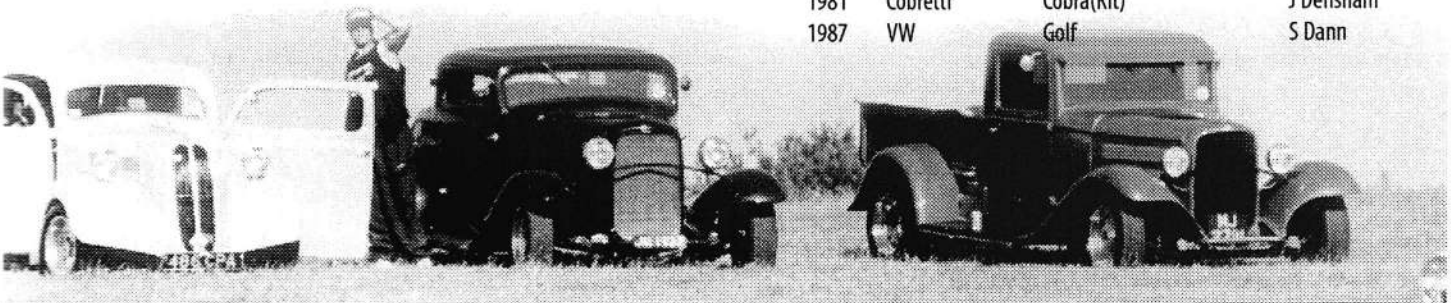
Time secs	Speed mph	Time secs	Speed mph	Time secs	Speed mph	Time secs	Speed mph
43.0	83.72	47.4	75.95	51.8	69.49	56.2	64.05
43.1	83.53	47.5	75.79	51.9	69.36	56.3	63.94
43.2	83.33	47.6	75.63	52.0	69.23	56.4	63.82
43.3	83.14	47.7	75.47	52.1	69.09	56.5	63.71
43.4	82.95	47.8	75.31	52.2	68.96	56.6	63.60
43.5	82.76	47.9	75.15	52.3	68.83	56.7	63.49
43.6	82.57	48.0	75.00	52.4	68.70	56.8	63.38
43.7	82.38	48.1	74.84	52.5	68.57	56.9	63.26
43.8	82.19	48.2	74.69	52.6	68.44	57.0	63.15
43.9	82.00	48.3	74.53	52.7	68.31	57.1	63.04
44.0	81.82	48.4	74.38	52.8	68.18	57.2	62.93
44.1	81.63	48.5	74.23	52.9	68.05	57.3	62.82
44.2	81.45	48.6	74.07	53.0	67.92	57.4	62.71
44.3	81.26	48.7	73.92	53.1	67.79	57.5	62.60
44.4	81.08	48.8	73.77	53.2	67.66	57.6	62.50
44.5	80.90	48.9	73.62	53.3	67.54	57.7	62.39
44.6	80.72	49.0	73.47	53.4	67.41	57.8	62.28
44.7	80.54	49.1	73.32	53.5	67.28	57.9	62.17
44.8	80.36	49.2	73.17	53.6	67.16	58.0	62.06
44.9	80.18	49.3	73.02	53.7	67.03	58.1	61.96
45.0	80.00	49.4	72.87	53.8	66.91	58.2	61.85
45.1	79.82	49.5	72.73	53.9	66.79	58.3	61.74
45.2	79.65	49.6	72.58	54.0	66.66	58.4	61.64
45.3	79.47	49.7	72.43	54.1	66.54	58.5	61.53
45.4	79.30	49.8	72.29	54.2	66.42	58.6	61.43
45.5	79.12	49.9	72.14	54.3	66.29	58.7	61.32
45.6	78.95	50.0	72.00	54.4	66.17	58.8	61.22
45.7	78.77	50.1	71.86	54.5	66.05	58.9	61.12
45.8	78.60	50.2	71.71	54.6	65.93	59.0	61.01
45.9	78.43	50.3	71.57	54.7	65.81	59.1	60.91
46.0	78.26	50.4	71.43	54.8	65.69	59.2	60.81
46.1	78.09	50.5	71.29	54.9	65.57	59.3	60.70
46.2	77.92	50.6	71.15	55.0	65.45	59.4	60.60
46.3	77.75	50.7	71.01	55.1	65.33	59.5	60.50
46.4	77.59	50.8	70.86	55.2	65.21	59.6	60.40
46.5	77.42	50.9	70.72	55.3	65.09	59.7	60.30
46.6	77.25	51.0	70.58	55.4	64.98	59.8	60.20
46.7	77.09	51.1	70.45	55.5	64.86	59.9	60.10
46.8	76.92	51.2	70.31	55.6	64.77	60.0	60.00
46.9	76.75	51.3	70.17	55.7	64.63		
47.0	76.60	51.4	70.03	55.8	64.51		
47.1	76.43	51.5	69.90	55.9	64.40		
47.2	76.27	51.6	69.76	56.0	64.28		
47.3	76.11	51.7	69.63	56.1	64.17		

Classic Cars

Year	Make	Model	Owner
1932	Austin	7	R E Vickery
1937	MG	TA Sports	P Knowles
1952	Jaguar	XK 120 OTS(Comp)	Valerie Cowie
1953	Cadillac	Coupe De Ville	M & B Kushel
1953	Daimler	Conquest	C Haynes
1957	Austin	Metropolitan	J W Cheeseman
1958	Buick	Special	D Debenham
1958	Cadillac	60 Special Fleetwood	M Eyles
1959	Vauxhall	Victor F Series	R Stevens
1960	Morris	Minor 1000	M Tomsett
1960	Wolsley	1500	L Mayatt
1961	Morris	1000 4Door Saloon	J Cross
1961	Jaguar	MK II	J Hunter
1962	Jaguar	E-Type 3.8	P K Hogben
1965	Morris	Traveller	V Elliott
1965	Morris	Minor	K Arnold
1966	MG	BGT MKI	T Copeland
1966	Triumph	Herald 1200	D Skates
1967	Austin	Mini	J McNair
1968	Volvo	121	T Young
1969	Triumph	Spitfire M14B	D Cleford
1969	Chevrolet	Camaro	S Robinson
1970	Jaguar	E Type Roadster	Gordon Cowie
1971	Morris	Traveller	P Hinge
1971	Triumph	Herald	Sharon Cleford
1971	Morris	Minor	Tracey Restell
1971	Triumph	Herald13/60 Sports	Frances Smith
1972	Vauxhall	Firenza Sport	T J Price
1972	Ford	Cortina Mk3	A Fifield
1973	MGBGT V8	Coupe	M J Bean
1973	Triumph	Stag	I Glover
1974	Rover	P6 3500	J Bean
1974	Alfa Romeo	Montreal	J Mepsted
1974	Ford	Mexico	G Crafter
1974	Vauxhall	Droop Snoop Firenza	B Wray
1974	Triumph	Dolomite Sprint	K Rudrum
1975	Porsche	911 Turbo Coupe	A Elward
1975	Triumph	Dolomite	P Cleford
1978	Triumph	Dolomite Sprint	J Webb
1981	Triumph	TR73 5VB Conv	G J Foreman
1987	Austin	Mini Convertible	P Dunk
1988	BMW	M3	R Bayerlein

Custom Cars

Year	Make	Model	Owner
1923	Ford	T	Graham Cowie
1934	Ford	Phantom	G Lawrence
1955	Ford	Popular	Hilary Bannock
1957	Ford	Popular	R & F Siggery
1981	Cobretti	Cobra(Kit)	J Densham
1987	VW	Golf	S Dann



Membership Form

I would like to apply for membership of the South East Motor Sports Enthusiasts Club.

DETAILS OF APPLICANT

NAME _____

ADDRESS _____

_____ POST CODE _____

TELEPHONE NO.(HOME) _____ (WORK) _____

TYPE OF CAR(S) OWNED

INTERESTS

COMPETITOR / OFFICIAL / MARSHAL (circle those appropriate)

Competition Car Formula/ Type of race entered

Championships (which registered for)

Do you require copies of TWMC Championship regulations and registration forms YES/NO (delete as appropriate)

If so which championships: (circle those appropriate below)

(Saloon/Special & Silhouette/Sports Car/Saloon & Sports Car Handicap/Up to 1600cc Single Seater/Sprint)

TYPES OF MEMBERSHIP

DISCOUNTED NON RACING MEMBERSHIP FOR MARSHALS £ 7.50 (first year subject to conditions)

NON RACING MEMBERSHIP £ 12.50 (per annum)

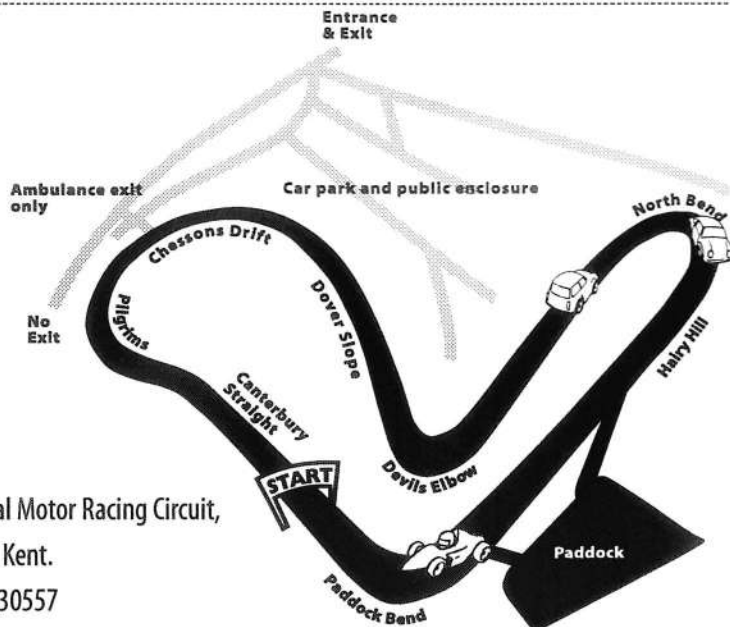
RACING MEMBERSHIP £ 25.00 (per annum)

I enclose a cheque/postal order for £ payable to the SOUTH EAST MOTOR SPORTS ENTHUSIASTS CLUB.

Please send all membership applications to: Lorraine Greenfield, Membership Secretary, South East Motor Sports Enthusiasts

Club, Greenfields, 16 Saxonbury Close, Crowborough, East Sussex TN6 1EA.

The South East Motor Sports Enthusiasts Club is a company limited by the guarantee of its members up to a limit of £1.00



Lydden International Motor Racing Circuit,

Wotton Canterbury, Kent.

Telephone: 01304 830557

Do You Want to Keep Racing at Lydden?

The owners of Lydden Circuit, TAG-McLaren, plan to build a factory and test-track here for the new Mercedes sports car, which means that motorsport may have to cease here after 2001.

At the end of last year it seemed that both McLaren and Dover District Council were prepared to allow racing to continue here if there was sufficient support. But in March the council produced a report which recommends that "The new circuit is not to be used for racing of any motor vehicle or for the testing of Formula 1 cars or other unsilenced vehicles" and "The use of the existing circuit for racing shall cease upon the commencement of the first phase of the factory, or the commencement of the new circuit." So unless we do something about it, racing will finish at Lydden.

I believe that neither the council nor McLaren have any idea of the number of enthusiasts who rely on Lydden for their motorsport entertainment and who would be affected by its closure. At the moment the council is influenced solely by a very few people who complain about the noise.

Hundreds of racers on two wheels and four, including world champions such as James Hunt, Damon Hill, Barry Sheene, Carl Fogarty and Darren Dixon, have made their mark in motorsport after starting out at Lydden. And many more continue to enjoy their motorsport at the circuit without wishing to watch, or race, anywhere else.

I intend to make McLaren and Dover District Council aware of the level of support that exists for motorsport to continue at Lydden, not in a militant or obstructive way, but in what I believe to be a constructive manner, by organising a petition.

Please help us to help you and keep motorsport alive by signing the petition, either at the entrance booths to the circuit or at the Paddock Office. If, like me, you feel sufficiently passionate about motorsport to do something extra you may wish to set out your views in a letter addressed to The Director of Planning, Dover District Council and forward it to me at the address below, so that I can collate them all with the signatures on the petition. Thank you for your support.

Kerry Dunlop, 3, The Downings, Herne Bay, Kent, CT6 7EJ