

SEMSEC

South East Motor Sport Enthusiasts Club

Tunbridge Wells Motor Club



Sprint and Race Meeting 21st June 2003



SEMSEC

Today's Officials

Held under the General Regulations of The Motor Sports Association (incorporating the provisions of the International Sporting Code of the FIA) the Supplementary Regulations.

Permit Numbers: Race 18023 Nat B, Sprint 18016 Nat B

Race Officials:

MSA Steward:	Mr Neil Benfield
Club Stewards:	Duncan Welch, Jim Greenfield
Senior Clerk of the Course:	Mervyn Kennard
Clerk of the Course:	Ken Greenfield
Deputy Clerk of the Course:	Nikki Stevens
Assistant Clerk of the Course:	David Llewellyn
Chief Marshal:	Terry Harrison
Chief Judge:	Steve Goodwin
Chief Scrutineer:	John Winder
Chief Timekeeper:	Debbie Oates
Chief Incident Officer:	Richard Snedder
Chief Medical Officer:	Dr Alan Jones
I/C Rescue Unit:	Paul Butt
Chief Observer:	Gary Goodwin
Secretary of the Meeting:	Katrina Low - Assistant: Anthony Miles Howard Shaddock
Chief Noise Official:	

Sprint Officials:

MSA Steward:	Mr Neil Benfield
Club Stewards:	Duncan Welch, Jim Greenfield
Senior Clerk of the Course:	Ken Greenfield
Clerk of the Course:	Nikki Stevens
Deputy Clerk of the Course:	Peter Wilks
Assistant Clerk of the Course:	David Llewellyn
Chief Marshal & I/O:	Adrian Dawkins
Chief Judge:	Steve Goodwin
Chief Scrutineer:	John Winder
Chief Timekeeper:	Debbie Oates
Chief Medical Officer:	Dr Will Manger
I/C Rescue Unit:	Paul Butt
Chief Observer:	Gary Goodwin
Secretary of the Meeting:	Katrina Low - Assistant: Anthony Miles Howard Shaddock
Chief Noise Official:	



NOTICE - WARNING TO THE PUBLIC MOTOR SPORT IS DANGEROUS

It is a condition of admission that all persons having any connection with the promotion and/or organisation and/or conduct of the meeting, including the owners of the land and the drivers and owners of the vehicles and passengers in the vehicles, are absolved from all liability arising out of accidents causing damage or personal injury (whether fatal or otherwise) however caused to spectators or ticket holders.

In the event of an accident, PLEASE REMAIN WHERE YOU ARE. There are doctors in attendance at this meeting as well as a trained Rescue Unit and Red Cross Personnel.

Spectator Notices

Please do not leave litter about the grounds, place it in the receptacles provided or take it home with you. Remember one piece of litter could be FATAL.

Please drive with care and consideration for others when leaving the circuit, this is a race track the road outside is not.

SPECIAL NOTICE - Dogs are allowed in the circuit grounds, but they must be kept securely on a lead, they are not allowed in the Paddock Area.

NOTE - It is a condition of the planning permission granted to Lydden Circuit that there be no engine noise prior to 9.00am on weekdays and Saturdays, and 12.30 on Sundays, and after 6.00pm on any day. Will competitors please comply. Furthermore competitors are forbidden to, and spectators are requested not to, approach or leave the circuit via Wootton Village, enter and exit via A2 only.

Prohibited Area Notice

The public are not permitted in the area where the notices are displayed. Any fences or gates are there for your protection. Any person found trespassing or wilfully damaging trees, fences etc WILL BE PROSECUTED BY THE CIRCUIT.

Foreword

SEMSEC and Tunbridge Wells Motor Club (TWMC) have joined forces for today's sprint and race meeting. The TWMC sprint will get the day underway with an event, which is part of the very popular All Circuit Sprint Championship. It is also a part of four regional championships and the Caterham Academy Championship. Competitors in this type of event are competing against the clock to achieve the best possible time in their class or the event overall. Each competitor will be given the opportunity of a 2³/₄ lap practice and then two timed runs of 1³/₄ laps.

Following the sprint and a short lunch break, SEMSEC take over the circuit for a race meeting of SEMSEC's various saloon, sports car and single seater championships and challenge series. There are some established Championships and series such as the BSW Intermediate Saloons and Sports Cars, the Credit Professional Sports Car Championship, the John Taylor Handicap Championship and the South East Sports & Saloon Challenge Series. The SEMSEC Super Mini Challenge, the 7 Type Sports Car easyTRACK Challenge are among some new challenge series for 2003. The SEMSEC Open Single Seater challenge has been revamped to provide a greater challenge and more variety throughout the year in the hope that more single seater entries can be attracted to race at Lydden. There is also a race for the Caterham Academy cars that took part in the mornings Sprint event.

We hope you enjoy today's meeting and return for one of SEMSEC's future events in 2003.

www.semsec.org.uk

Designed by SGSS Design 01892 668508 www.sg-ss.co.uk

Timetable

- Sprint Practice from 9.00am
- 1st Timed Runs 10.30am approx
- Lunch break following completion of sprint
- First Race Practice 12.45 hrs
- First Race 14.45 hrs
- Last Race completed by 18.00 hrs



Graham Wells

SEMSEC Dates

Sunday 6th July Race Meeting

Saturday 12th July Sprint

Saturday 2nd August Sprint and Race Meeting

Saturday 6th September Sprint and Race Meeting

Sunday 28th September Race Meeting

Saturday 25th October Sprint and Race Meeting

Cover: Graham Farmer (12), Bill Richards (26) and Peter Wilks (10). Above: A Paramedic helps dig out Peter Wilks' Porsche from the tyre wall at Devils Elbow.

The Club was formed in 1994 to promote race and rallycross meetings at Lydden Circuit. Formed as a joint venture between the British Automobile Racing Club London & Home Counties Centre, the Tunbridge Wells Motor Club (TWMC) and several prominent local motor sport enthusiasts.

In 1995 the management of the club was taken over by TWMC who invited local clubs to become involved and use the club as a vehicle to run race events and other events. Whilst a large number of clubs expressed interest it was left to TWMC to take SEMSEC forward with the support of Rochester MC and Borough 19 MC. These clubs supply many of the officials for SEMSEC events. Each club also run Sprints that are part of the events. In 1995 the Lydden Marshals Club was also amalgamated with SEMSEC. 1995 saw a large increase in support for SEMSEC's meetings and they have been building on this ever since.

Although managed by TWMC and assisted by

Rochester and Borough 19 Motor Club's, SEMSEC is a true Lydden based club. All of its meetings taking place at the circuit, with many local members and an increasing number of local organisers. Many of the regular Lydden marshals are also full members of SEMSEC. SEMSEC hold club nights at the Phoenix Railway Club, Crabble Road, Dover on the second Tuesday of each month starting at 8pm. New and prospective members are always welcome.

If you would like to join the club to race, marshal, officiate or as a social member, there is an application form at the back of this programme. Racing membership is just £25.00 per annum whilst non-racing membership is £12.50 per annum. As a SEMSEC member you will also be entitled to take part in many of the TWMC's events and you will receive copies of both club's newsletters giving details of forthcoming events and reports on past events.

The club's programme of events for 2003 includes eight race meetings at Lydden Circuit. Six of these are supported by sprints with one stand alone sprint event in July. The remaining dates of this years events are:



Colin Rooney

Sunday 6th July – Race Meeting, Cycle Racing, Classic Cars Displays
Saturday 12th July – Sprint
Saturday 2nd August – Sprint & Race Meeting
Saturday 6th September – Sprint & Race Meeting
Sunday 28th September – SEMSEC Race Meeting
Saturday 25th October – RMC Sprint & SEMSEC Race Meeting

Results from today's event will be available from SEMSEC's website:

www.semsec.org.uk

Tunbridge Wells Motor Club

Tunbridge Wells Motor Club (TWMC) traces its origins back to 1911 when it was formed as a Motor Cycling Club. It later added a motor car section and is today entirely devoted to 4 wheels. The club is in its 92nd year this year making it one of the oldest provincial motor clubs in Britain today.

The Club is also involved in a wide range of other competitive and social motoring activities. These include Racing, Sprints, Trials and Autotests. Members also compete in many other events such as Stage Rallies, Historic & Classic Rallying, Hillclimbs, Karting and Rallycross

For the socially active there are Barbecues, a Dinner Dance and various trips to major motoring events

around Europe. Whatever your interest, competitive or social motoring, we hope that you will join the Tunbridge Wells Motor Club and enjoy the activities we have on offer.

TWMC meet on the first Tuesday of each month at the Junction Inn, Station Road, Groombridge, from around 8pm. New and prospective members are always welcome. Single person club membership costs £15.00 per annum whilst family membership is £17.50. For further information about the club phone the Club Chairman, Norman Redhead on 01323 502335 or visit the club's website at

www.twmc.org.uk

Borough 19 Motor Club

Borough 19 Motor Club was initially formed in 1963 and took its name after Bromley and Beckenham became the 19th London Borough. It was formed by schoolmates, workmates, customers and friends of Stoneham's Garage at Eden Park, Beckenham, Kent. Customers and colleagues at the West Wickham (1936) Garage and Squires Timber joined the Club. Meetings were held at the Eden Park Hotel as were meetings of Eden Park 100 Motor Club. This latter club collapsed and most of its members joined Borough 19 as did several members of the Bromley Motor Club which was soon to suffer a similar fate. Borough 19 Motor Club then became affiliated to the Royal Automobile Club.

The first speed event was an Autocross at Stanstead Farm, Caterham in Whitsun 1964 and later followed by a Road Rally. Borough 19 MC is currently organising events for the clubman and grass roots

motorsport enthusiast. It offers Production Car Trials and Autotests for members to enter in their standard road saloon cars. For the Speed enthusiasts the Club organises Autocross and Sprint meetings. The club meets at the Colyers Arms PH, Station Road, Betham, near Dartford on the 2nd Tuesday of every month.

Other events, which are very popular with the members, are the three local indoor karting evenings and members also participate in Rallycross, Race Meetings and Rallies.

Membership is only £17 per annum. The Club also issues a monthly magazine.

Further membership details and forms can be obtained by telephoning 01732 351419 or visiting the web site at:

www.borough19motorclub.co.uk

Rochester Motor Club

Founded in 1912, the club has one of the largest memberships in the South East, with over 300 members. The club is fairly unique in that it's activities encompass karting, car and motorcycle events. The ever expanding karting section features four stroke racing with eight classes, from 8 year old upwards. This section operates under its own promotional banner of the Formula 6 Association. Also Rochester Motor Club, as one of the three clubs running the Kent Racing Combine, has long been promoting motorcycle road racing. It is currently promoting a series of six hour endurance races. The

car section is proud to promote events at Lydden and to participate in the promotion of the SEMSEC race series.

The Club has its own Offices at Tiger Month Pub, Davis Estate Chatham on 1st and 3rd Thursday of each month.

Contact: Ron McCabe on 01622 745714

Membership Fees: Junior £10.00, Senior - £12.00
Husband & Wife £14.00

www.rochestermc.co.uk

The stunning MG Rover range is in our showroom. Call now and arrange your test drive.

Barretts
www.barrettskent.co.uk

Broad Oak Road
Canterbury
tel: 01227 864455

Championships

In 2003 SEMSEC has three championships and five challenge series. The championships and challenge series will be contested over a total of 8 or 9 events. Today's event provides the first round of 2003 in all of these championships and series.

Credit Professionals Sports Car Championship

The Lydden sports car championship benefits from support from Credit Professionals which provides some cash prizes for the championship winner and runner up. The championship is for a wide variety of sports cars. It includes a class for Caterham Seven type cars as well as classes for mass-produced sports cars, 'roadgoing' sports cars and a class for sports cars with a limited production run. This will be the ninth year that this championship has been promoted and it increases in popularity each year. Support from Caterham drivers has increased so much that there has been a spin of series of half hour races for '7 Type' sports cars. For this years championship points are awarded according to class finishing position so the outright race winner may not always be the only high scoring championship contender. There was some very close racing in this championship last year so we are hoping for some exciting racing in today's Credit Professionals Sports Car Championship race.

BSW Intermediate Saloon & Sports Car Championship

Part of the SEMSEC Saloon & Sports Championship

The BSW Intermediate Saloon & Sports Car Championship is for saloon and hatchback cars retaining the original engine block and head. There are restrictions on what can be changed with regard to both mechanical components and bodywork. The class structure caters for cars running on slicks or 'road going' cars using normal road tyres. There is also provision for the inclusion of forced induction saloons and classes are again structured to recognise the power advantage these cars may have. There are however restrictions on the type of turbo unit and intercooler the cars can use. Additionally, to equalise power and traction advantages four wheel drive cars can only run on road tyres. As with the sports car championship, points are awarded according to a competitors class finishing position, not overall position, so there is plenty of chance for some of the smaller less powerful cars to compete for the overall championship honours. Bill Richards' built a mini especially for this championship in 2000 and took the overall championship honours that year by a very close margin. Last year the winner was Warren Johnson in a Peugeot 206 and of course there are a whole range of powerful Cosworth powered cars that will be fighting to lead the race.



BSW Motorsport

Competition Car Preparation

Race Car Hire

Telephone Mark Wright on 01474 700052

Sponsors of SEMSEC's Intermediate Saloons & Sports Car Category

Sprint Entry List

Tunbridge Wells Motor Club June Sprint - 21st June 2003

No.	Driver	Club	Make/Model	CC	Champ
-----	--------	------	------------	----	-------

Category A: For Standard Production Sports & Saloon Cars

A1 up to 1400cc

7	Graham Pickard	Rochester	Peugeot 106 Rallye	1294cc	
---	----------------	-----------	--------------------	--------	--

A2 over 1400cc to 2000cc

1	Julian Spender	TWMC	Peugeot 205 Gti	1905cc	1
2	Stephen Beesley	B19	Peugeot 405	1905cc	12345
11	Bryan Crouch	RSSOC	Reliant SST	1800cc	

Category B: Roadgoing Production Sports & Saloon Cars

B4 up to 1400cc

3	Dick Athow	7Oaks	Alpine Renault A110	1397cc	45
---	------------	-------	---------------------	--------	----

B5 over 1400cc to 2000cc

4	Glyn Jones	TWMC	Ford Cortina	1600cc	1
5	Colin Ashton	TWMC	Ford Cortina	1700cc	1

B6 over 2000cc

8	Paul Bartlam	TWMC	Ford Escort	1700cc	1
9	Don Ross	RSSOC	Reliant Scimitar	2994cc	

Category C: Roadgoing Kit Cars & Replica Cars

C7 Up to 1700cc

10	Andrew Gardner	Rochester MC	Caterham 7	1699cc	1
19	Rob Thomas	BARC	Caterham 7	1600cc	

C8 Over 1700cc

12	Mark Anderson	SELOC	Lotus Elise S160	1800cc	
14	Nicholas Bird	SELOC	Lotus Elise S160	1800cc	
15	Stephen Laing	Peterborough	Lotus Exige	1796cc	14
16	Jeremy Milligan	B19	Westfield SEW	1800cc	
17	Paul Golding	SELOC	Lotus Elise	1800cc	
18	Mike Harrington	B19	Caterham 7	1796cc	3
181	Peter Wards	SDMC	Caterham 7	1796cc	15

Category D: Modified Production Cars Complying with MSA Sprint & Hillclimb Regs

D9 Up to 1400cc

20	Nick Crush	SDMC/B19	Austin Mini	1380cc	1
21	Chris Judge	B19	Mini Cooper	1293cc	12345

D10 Over 1400 to 2000cc

22	Roy Edwards	TWMC	Ford Escort MK1 RS	1997cc	1
23	Roger Burgess	B19	Ford Escort Mk2	1993cc	234
24	Paul Bartlam	TWMC	Ford Escort	1700cc	1
25	Jason Podd	TWMC	Ford Escort Mk2 RS	1997cc	

D11 Over 2000cc

26	Steve Heath	BARC/TVR	TVR 390SE	5150cc	12345
----	-------------	----------	-----------	--------	-------

Category E: For Single Seaters, Sports Racing Cars, & Special saloons & Other Cars not complying with Categories ABC & D.

E12 Special Saloons, Group B & GT1 Sports Cars, World Rally Cars, Kit type 7 Replica Cars, any capacity, not complying with any other class.

27	Doug Setters withdrawn	SELOC	Westfield SE1	2000cc	
----	------------------------	-------	---------------	--------	--

E13 Pre 1994 Formula Ford 1600 & Formula First

28 Innes Hickman BARC Van Diemen RF89 1600cc 1234

E14 Single Seaters & Sports Racing Cars up to 1300cc

29 Stephen Knight B19 Van Diemen RF93 1137cc
30 Ian Catt TWMC OMS SFA/2 900cc 1
31 Chris Setters withdrawn SELOC Radical 1200cc

E15 Single Seaters & Sports Racing Cars over 1300cc and up to 1700cc

32 Ray Heal Withdrawn BARC Mallock Mk21 1700cc

E16 Single Seaters & Sports Racing Cars over 1700cc

34 Tony Staines B19 Reynard Opel 1998cc 2345
35 Bill Johnson BARC Reynard FVL 1998cc 12
351 Glenn Del Medico BARC Reynard FVL 1998cc 12

Special Classes:

S17 Cars Complying with the Caterham Academy Championship Regulations

40	Andrew Beaumont	BARC	Caterham 7	1600cc	6
41	Merlin Inkley	BARC	Caterham 7	1600cc	6
42	Garret Kilner	BARC	Caterham 7	1600cc	6
43	Nathan Bell	BARC	Caterham 7	1600cc	6
44	Mike Styles	BARC	Caterham 7	1600cc	6
45	Neil Fletcher	BARC	Caterham 7	1600cc	6
46	Antony Lorenzo	BARC	Caterham 7	1600cc	6
47	Alan Kingsman	BARC	Caterham 7	1600cc	6
48	Peter Dickinson	BARC	Caterham 7	1600cc	6
49	Christian Hoper	BARC	Caterham 7	1600cc	6
50	Clifford Murphy	BARC	Caterham 7	1600cc	6
51	Ben Pontin	BARC	Caterham 7	1600cc	6
52	Richard Stansfield	BARC	Caterham 7	1600cc	6
53	Simon Mardle	BARC	Caterham 7	1600cc	6
54	Ron Johnson	WITHDRAWN	Caterham 7	1600cc	6
55	Jim Tatchell	BARC	Caterham 7	1600cc	6
56	Howard Pessall	BARC	Caterham 7	1600cc	6
57	Bill Addison	BARC	Caterham 7	1600cc	6
58	Steve Delvin	BARC	Caterham 7	1600cc	6
59	Michael Thornhill	BARC	Caterham 7	1600cc	6
60	Matt Louth	BARC	Caterham 7	1600cc	6
61	Graham Smith	BARC	Caterham 7	1600cc	6
62	Gary Brown	BARC	Caterham 7	1600cc	6
63	Stephen Rowden	BARC	Caterham 7	1600cc	6
64	Michael Richards	BARC	Caterham 7	1600cc	6



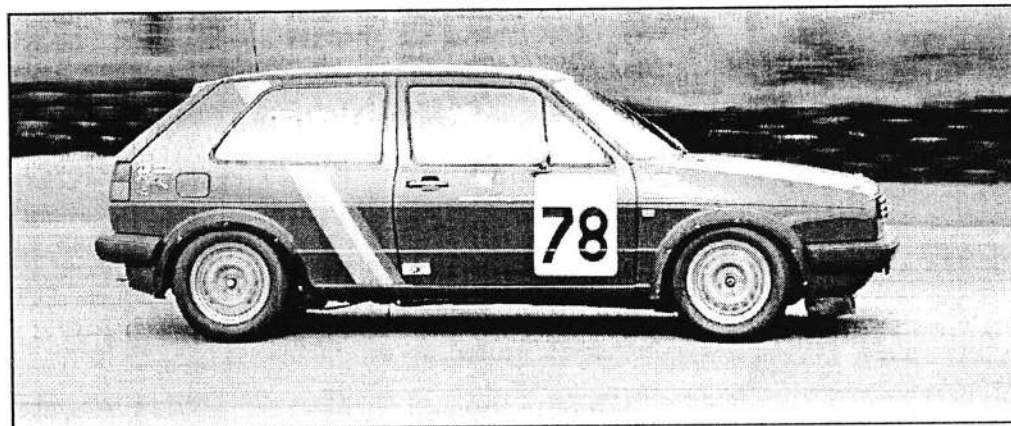
Championships:

1 The Tunbridge Wells Motor Club All Circuit Sprint Championship
2 Association of South Eastern Motor Clubs Speed Championship (ASEMC)
3 Association of Eastern Motor Clubs Sprint Championship (AEMC)

4 London Counties Association of Motor Clubs Sprint Challenge (ACSMC)
5 The Marketing Machine Speed League 2003 Championship
6 Caterham Academy 2003

Race Entry List

South East Motor Sport Enthusiasts Club in association with the Tunbridge Wells Motor Club, Rochester Motor Club & Borough 19 Motor Club. 2003 Lydden Championship Race Meeting. Saturday 21st June 2003
MSA (NAT B) Permit No. 18022



Race 1 South East Sports & Saloon Car Challenge Race - 12 Laps

No.	Driver	Make/Model	Engine/cc	Home Town
Class A - Sports Racing Cars up to 2000cc, & Sports Cars built & designed for one make Sports Racing Series up to 2000cc				
7	Mike Roberts	Jade Sports Prototype	Vauxhall SBD/2000	Hailsham
50	Ian Coburn	ADR Sports 1000	BMW K100/1000	Surrey
95	Leigh Parkes	Vision V86	Vauxhall/2000	Sutton
99	Neil Burroughs	ADR Sports 1000	BMW/1000	Reading

Class B - Silhouette GT Saloons over 1600cc, Production Kit Cars over 1700cc and Production based Sports Cars over 2500cc				
20	Mark Burton	Westfield Seven	SBD/2000	Biggin Hill
35	Neil Cordwell	Westfield SEIW	Ford Zetec/1998	Kent
66	Darren Duffield	Caterham Superlight R	Vauxhall/2000	Horsham
86	Gary Pickles	Caterham Seven	Minister/1800	Chichester

Class C - Special Saloons, Production Based Sports Cars up to 2500cc and Forced Induction Modified Production Saloons and Silhouettes GT Saloons up to 1600cc and Production Kit Cars up to 1700cc

3	Steve Govett	Rover 220 Turbo	Rover/1998t	Sittingbourne
9	Barney Halse	BMW 325	BMW/2500	London
26	Bill Richards	Metro Cosworth	Bill Richards/1298	Romney Marsh
(D)45	Steve Weatherley	Ford Sierra Sapphire	Cosworth/2000t	St Leonards
54	Stephen Craig	Ford Escort	Pinto-Maylum/1998	Canterbury
89	Chem Osman	BMW M3	BMW/2300	London

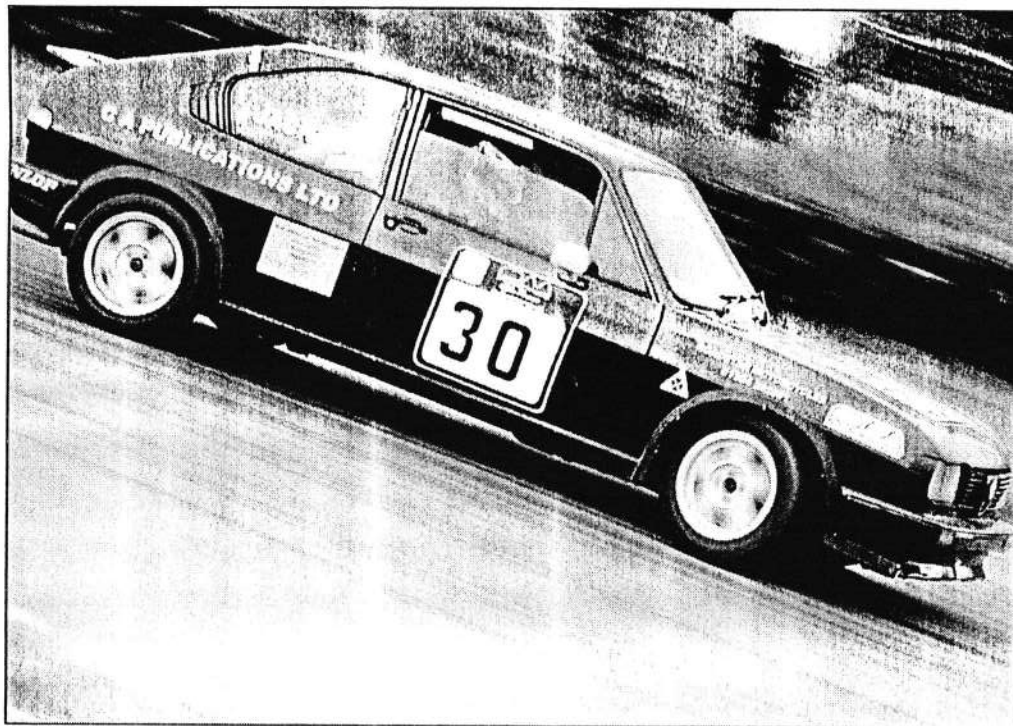
Class D - Modified Production Saloons up to 1700cc

4	Ron Watson	Rover Mini	Bill Richards/1380	London
---	------------	------------	--------------------	--------

Class E - Modified Saloons over 1700cc

10	Peter Wilkinson	Ford Sierra Cosworth	Ford/2000t	Bethersden
----	-----------------	----------------------	------------	------------

Results	1st	2nd	3rd	4th	5th	6th
---------	-----	-----	-----	-----	-----	-----



Race 2 Caterham Academy Trophy Race - 12 Laps

1	Mike Styles	Caterham Roadsport	R631227/1588	Hornchurch
4	Merlin Inkley	Caterham Academy	1600	London
5	Alan Kingsman	Caterham Academy	Rover K Series/1600	Oxon
6	Gary Brown	Caterham Seven	Rover K Series/1600	Surrey
7	Bill Addison	Caterham Super 7	1600	Stockton
9	Jim Tatchell	Caterham Super 7	Rover K Series/1600	Bishops Stortford
10	Garrett Kilner	Caterham Academy	1598	Coulsdon
12R1	Nicholas Potter	Caterham Academy	Rover K Series/1600	Leicester
14	Mike Richards	Caterham Super 7	1588	Rayleigh
15	Andrew Beaumont	Caterham Academy	Rover K Series/1600	Walton on Thames
20	Steve Devlin	Caterham Academy	Rover K Series/1600	Brentford
22	Cliff Murphy	Caterham Academy	Rover K Series/1600	Wimbledon
24	Neil Fletcher	Caterham Academy	Rover K Series/1600	Hornchurch
39	Matt Louth	Caterham Super 7	Rover k Series/1588	Southampton
40	Richard Stansfield	Caterham Academy	Rover K Series/1600	Oxford
47	Graham Smith	Caterham Academy	Rover K Series/1600	York
65	Peter Dickinson	Caterham Roadsport	Rover K Series/1600	Oxford
69	Michael Thornhill	Caterham Super 7	Rover/1600	Rotherham
70	Simon Mardle	Caterham Seven	Rover k Series/1600	Twickenham
75	Howard Pessall	Caterham Academy	1600	Leicester
79	Nathan Bell	Caterham Academy	Rover K Series/1600	Swindon
99	Anthony Di Lorenzo	Caterham Academy	Rover /1600	London

Results	1st	2nd	3rd	4th	5th	6th
---------	-----	-----	-----	-----	-----	-----

Race 3 Credit Professionals Sports Car Championship, Sports Racing and Super Saloon Championship (Part of the 2003 SEMSEC Saloons and Sports Championship) - 12 Laps

Class A - Roadgoing Sports Cars up to 2000cc and Mass Production based Sports Cars up to 1700cc.

23	Paul Bernal-Ryan	MG Midget	Home Brewed/1380	Ashford
11	Steve Luscombe	MG Midget	Bill Richards/1380	London
95	Leigh Parkes	Vision V86	Vauxhall/2000	Sutton

Class B - Roadgoing Sports Cars up to 2000cc, Mass Production based Sports Cars up to 1700cc and Caterham type cars up to 1700cc.

51	Derek Parker	Caterham Seven	Rover K Series/1400	Orpington
----	--------------	----------------	---------------------	-----------

Class C - Caterham 7 type cars over 1700 cc and motor cycle derived engined sports cars.

1	Trevor Phillips	Caterham Seven	Ford BDA /1790	Crowborough
17	Graham Booth	Caterham Seven Blackbird	Honda/1137	Hove
20	Mark Burton	Westfield Seven	SBD/2000	Biggin Hill
27	Nigel Bent	Caterham Seven SV	Minister/1796	Tunbridge Wells
33	John Dewing	Westfield SEI	Vauxhall/1998	Offham
35	Neil Cordwell	Westfield SEIW	Ford Zetec/1998	Kent
77	Alan Maynard	Caterham Fireblade	Honda/916	Washington
86	Gary Pickles	Caterham Seven	Minister/1800	Chichester
97	Marcus Thomas	Caterham Super Seven	K Series/1600	Sparsholt

Category A: Sports Racing

Class 1 - Sports Racing Cars, Prototype Sports & One Make Sports Cars specifically built and designed racing:

7	Mike Roberts	Jade Sports Prototype	Vauxhall SBD/2000	Hailsham
50	Ian Coburn	ADR Sports 1000	BMW K100/1000	Surrey
99	Neil Burroughs	ADR Sports 1000	BMW/1000	Reading

Category B: Super Saloons and Sports Cars (exc. Caterham 7 type cars)

Class 4 - Silhouette Saloons up to 1400cc and all steel bodied silhouette saloons

38	Graham Palmer	Peugeot 205 Gti	1600	Hove
----	---------------	-----------------	------	------

Results	1st	2nd	3rd	4th	5th	6th
---------	-----	-----	-----	-----	-----	-----



Race 4 BSW Intermediate Saloons and Sports Car Championship Race (Part of the 2003 SEMSEC Saloons and Sports Championship), 2003 SEMSEC Imp Engine Saloon, Sports Cars and Special Saloon Challenge 12 Laps

Category C: Intermediate Saloon Cars

Class 5 - Forced Induction Intermediate & Intermediate Sports Cars over 2000cc.

3	Steve Govett	Rover 220 Turbo	Rover/1998t	Sittingbourne
10	Peter Wilkinson	Ford Sierra Cosworth	Ford/2000t	Bethersden
(D)45	Steve Weatherley	Ford Sierra Sapphire	Cosworth/2000t	St Leonards
64	Peter Hillocks	Porche 911t	3300	Tunbridge Wells
96	Nigel Craig	Ford RS2000	Pinto/2100	Canterbury

Class 6 - Intermediate Saloons over 1800cc and Intermediate Sports Cars over 1400cc up to 1850cc

9	Jodie Halse	BMW 325	BMW/2502	London
17	Brian Wray	Vauxhall Chevette	Jon Mowatt/2300	Edenbridge
89	Barney Halse	BMW M3	BMW/2300	London

Class 7 - Intermediate Saloons over 1400cc and up to 1800cc

6	Chris Adams	Rover 216 Gti	Y-B-T Racing/1600	Romford
26	Bill Richards	Rover Mini	Bill Richards/1460	Romney Marsh
38	Andy Pipe	Ford Escort	Kent Dave Wills/1600	Harlow
43	David Terris	VW Golf Gti	VW/1781	Essex

Class 8 - Intermediate Saloons and Intermediate Sports Cars up to 1400cc and all Roadgoing Saloon & Sports Cars

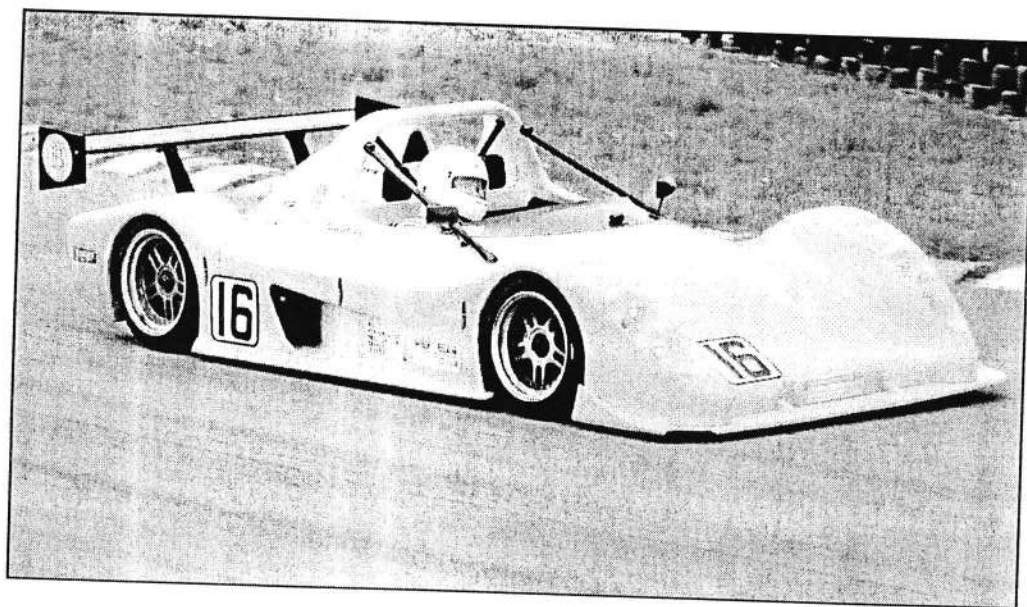
4	Ron Watson	Rover Mini	Bill Richards/1380	London
19	Bruce McKie	Peugeot 205 Gti	1580	Bexleyheath
68	Jack Brann	Ford Fiesta	CVM/1400	Tunbridge Wells
98	Allan Rawlings	Rover Mini	Bill Richards/1380	Ashford

2003 SEMSEC Imp Engine Saloon, Sports Cars and special Saloon Challenge

Class C - Imp Engine Modified Sports Cars and Special Saloons

14	Colin Rooney	Chamois Imp	Dan Rooney/998	Epsom
----	--------------	-------------	----------------	-------

Results	1st	2nd	3rd	4th	5th	6th
---------	-----	-----	-----	-----	-----	-----



Race 5 7 Type Sports Car easyTRACK Challenge - 30 minutes + 1 Lap

Class A - Standard engines up to 1400cc,

1	John Hill	Caterham Seven	Rover K Series/1400	Orpington
---	-----------	----------------	---------------------	-----------

Class B - Standard engines up to 1401cc to 1700cc, motorbike engines up to 1000cc

77	Alan Maynard	Caterham Fireblade	Honda/916	Washington
97	Marcus Thomas	Caterham Super Seven	K Series/1600	Sparsholt

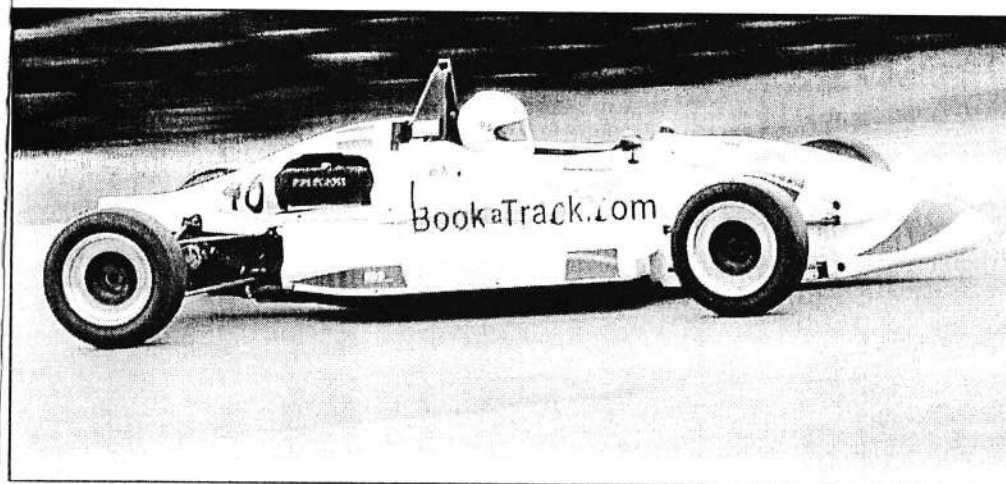
Class C - Standard engines over 1700cc, Modified engines up to 1700cc, motorbike engines 1001cc up to 1200cc

7	Graham Booth	Caterham Seven Blackbird	Honda/1137	Hove
36	Gary Merritt	Westfield SE	HPE/1700	Worcester Park
57	John Bird	Caterham Blackbird	Prosportif/1137	Copthorne

Class D - Modified engines over 1701cc, motorbike engines over 1201cc

1	Trevor Phillips	Caterham Seven	Ford BDA/1790	Crowborough
27	Nigel Bent	Caterham Seven SV	Minister/1796	Tunbridge Wells
66	Darren Duffield	Caterham Superlight R	Vauxhall/2000	Horsham

Results	1st	2nd	3rd	4th	5th	6th
---------	-----	-----	-----	-----	-----	-----



Race 6 SEMSEC Open Single Seater Challenge - 25 Laps

Class B - Formula Ford 1600 and Formula First Cars

1	Douglas Cross	Van Diemen	Formula Ford/1600	Koeln, Germany
12	Graham Fernor	Crossle 62F	Ford/1600	Tunbridge Wells

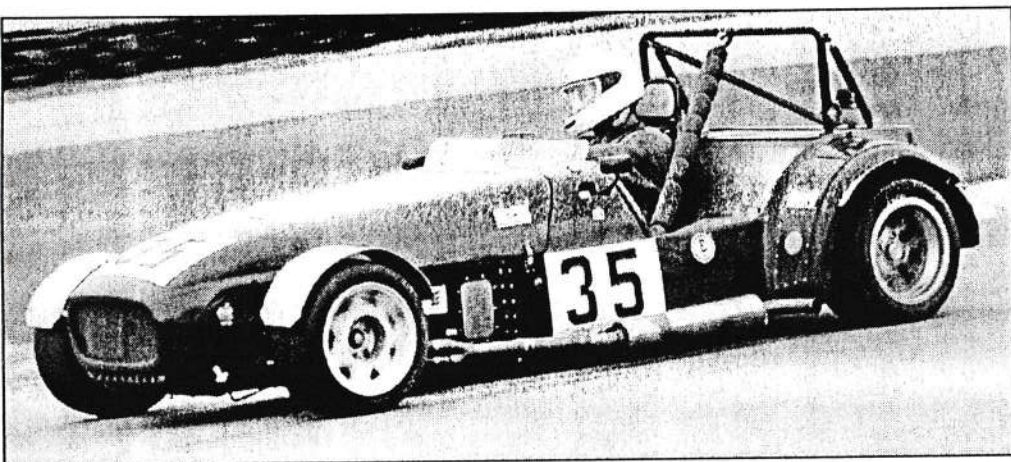
Class C - Formula Ford 1800 zetec cars and Formula Ford 2000cc

47	Ian Osborne	Reynard SF79	Warrior/2000	Maidstone
----	-------------	--------------	--------------	-----------

Class D - Formula Renault and Formula Vauxhall cars

76	Gary Tidwell	Swift SC94R	Renault/1720	Canterbury
37	James Gowens	Swift 93 SCR	Connaught/1720	Maidstone

Results	1st	2nd	3rd	4th	5th	6th
---------	-----	-----	-----	-----	-----	-----



Race 7 John Taylor Handicap Championship Race - 12 Laps

9	Jodie Halse	BMW 325	BMW/2502	London
27	Nigel Bent	Caterham Seven SV	Minister/1796	Tunbridge Wells
35	Neil Cordwell	Westfield SEIW	Ford Zetec/1998	Kent
43	David Terris	VW Golf Gti	VW/1781	Essex
50	Ian Coburn	ADR Sports1000	BMW K100	Surrey
89	Chem Osman	BMW M3	BMW/2300	London
97	Marcus Thomas	Caterham Super Seven	K Series/1600	Sparsholt

Results	1st	2nd	3rd	4th	5th	6th
---------	-----	-----	-----	-----	-----	-----

Key

* Denote cars that are entered in more than one championship in the same race and therefore appear in the entry list for that race twice

D Denotes disabled driver

R1 First Reserve

R2 Second Reserve

R3 Third Reserve

R4 Forth Reserve

Go to SEMSEC's website to download championship and event regulations and pictures from today's meeting

www.semsec.org.uk

SEMSEC Super Saloons & Sports Categories

Part of the SEMSEC Saloon & Sports Championship

The SEMSEC Super Saloons & Sports Categories allow much greater modification to cars than the BSW Intermediate Saloons category with many of the cars being space framed. The choice of engines and transmissions is free and the bodies are often made of lightweight materials such as fibreglass or Kevlar. There are also classes for Special Saloons. These cars retain steel bodies but have a wider choice of engines and transmissions available to them. All the saloon cars should retain the silhouette of an original manufacturer's model but as you will see there seems to be a little poetic licence in this area. For the third year we have also allowed home built non-commercial sports prototypes and sports racing and purpose built one make sports cars up to a 2000cc limit, to compete in this championship in their own class. We have seen some very close and exciting racing at the front of the field from these cars.

The John Taylor Handicap Championship Race

Our Chief Timekeeper at SEMSEC events between 1995 and 1997 was John Taylor and it was John who introduced us to the idea of running a Handicap Saloon and Sports Car race at each of our meetings. Unfortunately John had to retire from officiating at our events due to work commitments but the championship lives on. It has proved to be a very successful formula and in 2003 continues its full championship status for a series of eight races. The aim of this format of racing is to even up all the different power, weight and driver advantages and disadvantages from a wide range of saloon and sports cars. This is done by giving each competitor a time handicap according to his/her known performance. In some cases the slower cars may have a one or even two lap advantage over the fastest cars. This means that to win the fastest cars may have had to lap the slowest cars twice. This all makes for very exciting racing and whilst you will find it hard to follow at first you can be sure that when the cars all start bunching together the end of the race is not far away. In an ideal world, and if the handicapper got it right, the whole grid should finish across the line together. Of course this never happens as competitors get delayed passing others or are just unable to repeat their optimum performance lap after lap. However often the finishes can be very close with just a handful of seconds covering the top places and 20 seconds or so seconds covering the whole field.

SEMSEC Open Single Seater Challenge

As its name suggests this championship is for Single Seaters. There are classes for Formula Ford 1600's, Zetec Formula Fords, Formula Ford 2000's, Formula Renault, Formula Vauxhall, motorcycle engined single seaters and other single seaters up to 2 litre engine capacity. There is also a class for clubmans cars. All eight of the championship rounds will be run at Lydden. There are however four different race formats being used in this series and some events will include double headers, some will have a sprint race and a main race and some will include just a single race of either 12 or 15 laps or a longer race of 25 laps. The aim is to provide competitors with variety and enjoyable racing.

7 Type Sports Car easyTRACK Challenge

The 7 Type Sports Car easyTRACK Challenge is another new series for 2003 and was devised following a request for some longer races by our sports car drivers. The series is supported by easyTRACK who are promoters of track days and other events. The support from easyTRACK provides drivers with a number of cash prizes at each race. The 7 Type Sports Car easyTRACK Challenge features in six of SEMSEC's 2003 race meetings and provides a practice session and a half-hour race at each. There is also a fifteen-minute race at the Jaguar Car Club's Pembrey race meeting on 7th June. The series is restricted to Lotus/Caterham Seven type cars and there are four classes depending on the level of modification.

South East Sports & Saloon Challenge

This is a challenge series of nine races. Eight of these are at SEMSEC's Lydden events and there is also a race at the Jaguar Car Club's meeting at Pembrey in Wales on 7th June. There are classes in this series for a wide range of cars, which include all the Saloons and Sports Cars entitled to compete in the various other club championships. This series provides an additional race opportunity for those competitors and also the chance to compete at other circuits. We hope to be adding further races to this series as the year progresses.

SEMSEC Super Mini Challenge

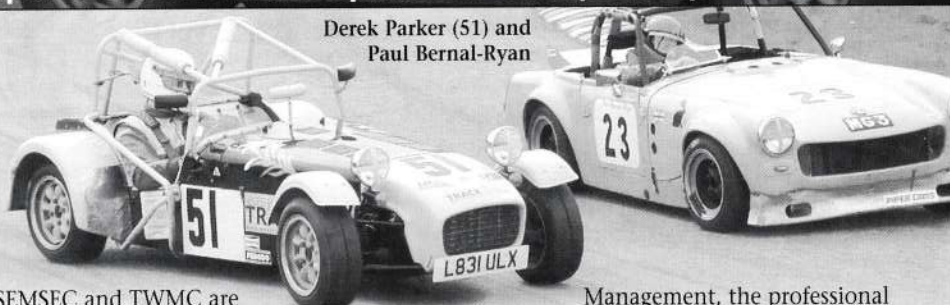
This is a new series introduced for 2003 aimed to cater for Minis which comply with Mini Seven, Mini Miglia, Mighty Mini or Super Mighty Mini regulations. There is also a class for the new BMW Mini Coopers. It is intended that there will be eight in 2003, one at each of the SEMSEC events at Lydden. Lydden is considered to be an ideal circuit for Mini racing providing a challenging course yet playing to the minis strengths and the cars nimbleness. We watch with interest to see how this new series will progress after the great interest it received when it was first announced.

SEMSEC Imp Engined Saloon & Sports Cars and Special Saloon Challenge

The Imp Engine Saloon, Sports Cars and Special Saloon Challenge was a new challenge series introduced in 2002 for cars using imp engines. There are classes to include various levels of modification and performance, which include a wide range of cars from relatively standard imps to space Framed Imps, Stiletos and Imp-engined sports cars. It is hoped that the start made in 2002 can be built upon for 2003.

Credit Professionals Sponsors of the TWMC Sports Car Championship

Derek Parker (51) and
Paul Bernal-Ryan



SEMSEC and TWMC are delighted that Credit Professionals (CPL) are supporting the 2003 TWMC Sports Car Championship. The owner of the company, Trevor Phillips, is a regular competitor in the series with his Caterham 7 and is a previous championship award winner.

Trevor's company helps businesses to increase their profitability through better management of their credit control. He is Vice President of The Institute of Credit

Management, the professional body for credit managers and is a regular lecturer and presenter on the subject. Whether it is collecting a single debt, managing an entire sales ledger or providing training, staff or consultancy, CPL can help.

As part of credit professionals support the overall Championship winner will receive £250 and the runner up will receive £100.
www.credit-manager.co.uk

easyTRACK Sponsors of the 7 Type Sports Car easyTRACK Challenge

Now the UK's largest and most prolific "trackday" organiser, Easytrack run events at circuits as far afield as the Hungaroring, Spa and Barcelona to all the top UK venues. Including many events on the exclusive Brands Hatch Grand Prix track.

By employing internet technology, securing tracktime has never been easier for the trackday driver. They simply need only visit www.easytrack.co.uk and they'll find all they need.

Club, group and corporate customers are welcome too and our experienced event management team can ensure clients get a great fun, smooth running and value for money circuit based motor event.

Contact Marcus or Peter on 01235 751854, visit our website at:

www.easytrack.co.uk

or drop us an email at info@easytrack.co.uk



Marcus Thomas

BSW Motorsport Sponsors of the Intermediate Saloons



Stephen Craig (54) and
Steve Weatherley

BSW Motorsport are a competition car preparation business based in West Kingsdown just three miles from Brands Hatch. BSW also hire race cars to competitors. If you are looking for someone to prepare your car or to hire a competition car BSW Motorsport can help

The company specialises in building,

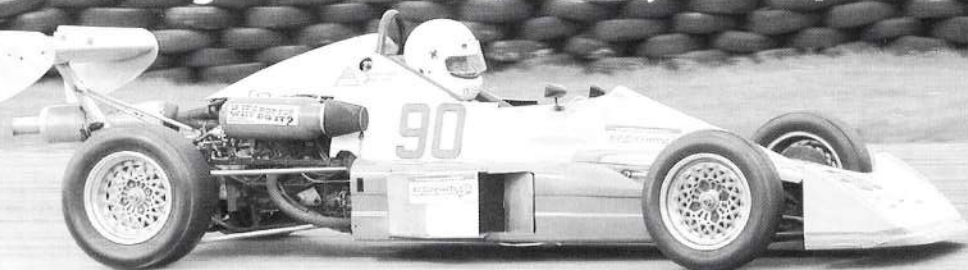
maintaining and tuning turbo and performance cars. BSW have a wealth of experience in the preparation of both race engines and race cars.

For further information call Mark Wright on 01474 700052 or visit their website at:

www.bswmotorsport.co.uk

Today's Sprint

Tunbridge Wells Motor Club Lydden Sprint



Barry Train

Each of the clubs involved in the running of SEMSEC also organises at least one of the sprints, that are a part of the events, each year. Today it is the turn of Tunbridge Wells Motor Club (TWMC).

Sprint competitors compete against the clock. Each competitor has a practice of just under three laps and then two timed runs of just under two laps. The relatively short distance means there is no room for error. The competition is fierce and each competitor must be fully committed from when the red light turns to green and make no mistakes if they are to win their class. Cars are split into 19 different classes depending on type, engine capacity and state of modification. There are classes for almost all types of car from standard unmodified road cars to full race

prepared single seaters.

Sprints provide a real challenge to competitors. It can be a sport for purists and also an excellent introduction into motor sport for the novice. With its reduced risk of collisions with other competitors it is also a relatively cheap form of the sport.

Today's event is a part of TWMC's very popular All Circuit Sprint Championship. This is the first of the 12 round championship using events run here at Lydden and Goodwood Circuits. It is also a round of four regional championships and the Caterham Academy Cars Championship.

You can find out more about TWMC from their website: www.twmc.org.uk

Membership Form

I would like to apply for membership of the South East Motor Sports Enthusiasts Club.

1. DETAILS OF APPLICANT

Name:

Address:

Post Code:

Tel: (Home)

(Work)

Type of car(s) owned:

2. INTERESTS

Competitor / Official / Marshal (circle those appropriate)

Competition Car Formula / Type of race entered

Championships (which registered for)

3. DO YOU REQUIRE COPIES OF TWMC/SEMSEC CHAMPIONSHIP REGULATIONS AND REGISTRATION FORMS?

YES/NO (delete as appropriate)

If YES which championships: (circle those appropriate below)

Saloon / Special & Silhouette / Sports Car / Saloon & Sports Car Handicap /
Up to 1600cc Single Seater / Sprint

4. TYPE OF MEMBERSHIP

- | | | |
|---|-------------------------------------|---|
| Discounted non-racing membership for marshals | <input checked="" type="checkbox"/> | £ 7.50 (first year subject to conditions) |
| Non-racing Membership | <input type="checkbox"/> | £ 12.50 (per annum) |
| Racing Membership | <input type="checkbox"/> | £ 25.00 (per annum) |

5. I ENCLOSE A CHEQUE/POSTAL ORDER PAYABLE TO THE 'SOUTH EAST MOTOR SPORTS ENTHUSIASTS CLUB'

for £

Please send all membership applications to: Lorraine Greenfield, Membership Secretary, SEMSEC, Greenfields, 16 Saxonbury Close, Crowborough, East Sussex TN6 1EA.

The South East Motor Sports Enthusiasts Club is a company limited by the guarantee of its members up to a limit of £1.00

Credit Reports



**UK & European
Credit Information**



The best online source for credit and
business information on 31 million
public and private companies worldwide

Debt Collection



**NO COLLECTION
NO COMMISSION**

Credit Professionals Ltd

WWW.CREDIT-MANAGER.CO.UK

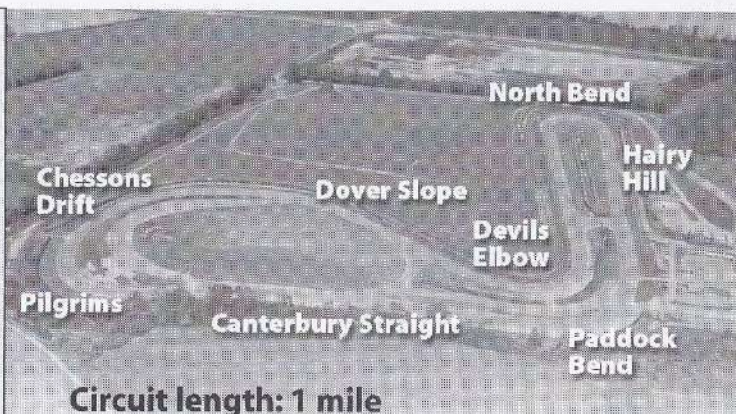
Call: Trevor Phillips on 01892 665806

or Email: credit.professionals@btclick.com

Lydden Circuit

Lap Speed Chart

Time	Speed						
secs	mph						
38	94.73	43.4	82.95	49.0	73.47	54.6	65.93
38.1	94.48	43.5	82.76	49.1	73.32	54.7	65.81
38.2	94.24	43.6	82.57	49.2	73.17	54.8	65.69
38.3	93.99	43.7	82.38	49.3	73.02	54.9	65.57
38.4	93.75	43.8	82.19	49.4	72.87	55.0	65.45
38.5	93.50	43.9	82.00	49.5	72.73	55.1	65.33
38.6	93.26	44.0	81.82	49.6	72.58	55.2	65.21
38.7	93.02	44.1	81.63	49.7	72.43	55.3	65.09
38.8	92.78	44.2	81.45	49.8	72.29	55.4	64.98
38.9	92.54	44.3	81.26	49.9	72.14	55.5	64.86
39	92.30	44.4	81.08	50.0	72.00	55.6	64.77
39.1	92.07	44.5	80.90	50.1	71.86	55.7	64.63
39.2	91.83	44.6	80.72	50.2	71.71	55.8	64.51
39.3	91.60	44.7	80.54	50.3	71.57	55.9	64.40
39.4	91.37	44.8	80.36	50.4	71.43	56.0	64.28
39.5	91.13	44.9	80.18	50.5	71.29	56.1	64.17
39.6	90.90	45.0	80.00	50.6	71.15	56.2	64.05
39.7	90.68	45.1	79.82	50.7	71.01	56.3	63.94
39.8	90.45	45.2	79.65	50.8	70.86	56.4	63.82
39.9	90.22	45.3	79.47	50.9	70.72	56.5	63.71
40	90.00	45.4	79.30	51.0	70.58	56.6	63.60
40.1	89.77	45.5	79.12	51.1	70.45	56.7	63.49
40.2	89.55	45.6	78.95	51.2	70.31	56.8	63.38
40.3	89.33	45.7	78.77	51.3	70.17	56.9	63.26
40.4	89.10	45.8	78.60	51.4	70.00	57.0	63.15
40.5	88.88	45.9	78.43	51.5	69.90	57.1	63.04
40.6	88.66	46.0	78.26	51.6	69.76	57.2	62.93
40.7	88.45	46.1	78.09	51.7	69.63	57.3	62.82
40.8	88.23	46.2	77.92	51.8	69.49	57.4	62.71
40.9	88.01	46.3	77.75	51.9	69.36	57.5	62.60
41	87.80	46.4	77.59	52.0	69.23	57.6	62.50
41.1	87.59	46.5	77.42	52.1	69.09	57.7	62.39
41.2	87.37	46.6	77.25	52.2	68.96	57.8	62.28
41.3	87.16	46.7	77.09	52.3	68.83	57.9	62.17
41.4	86.95	46.8	76.92	52.4	68.70	58.0	62.06
41.5	86.74	46.9	76.75	52.5	68.57	58.1	61.96
41.6	86.53	47.0	76.60	52.6	68.44	58.2	61.85
41.7	86.33	47.1	76.43	52.7	68.31	58.3	61.74
41.8	86.12	47.2	76.27	52.8	68.18	58.4	61.64
41.9	85.91	47.3	76.11	52.9	68.05	58.5	61.53
42	85.71	47.4	75.95	53.0	67.92	58.6	61.43
42.1	85.51	47.5	75.79	53.1	67.79	58.7	61.32
42.2	85.30	47.6	75.63	53.2	67.66	58.8	61.22
42.3	85.10	47.7	75.47	53.3	67.54	58.9	61.12
42.4	84.90	47.8	75.31	53.4	67.41	59.0	61.01
42.5	84.70	47.9	75.15	53.5	67.28	59.1	60.91
42.6	84.50	48.0	75.00	53.6	67.16	59.2	60.81
42.7	84.30	48.1	74.84	53.7	67.03	59.3	60.70
42.8	84.11	48.2	74.69	53.8	66.91	59.4	60.60
42.9	83.91	48.3	74.53	53.9	66.79	59.5	60.50
43	83.72	48.4	74.38	54.0	66.66	59.6	60.40
43.1	83.53	48.5	74.23	54.1	66.54	59.7	60.30
43.2	83.33	48.6	74.07	54.2	66.42	59.8	60.20
43.3	83.14	48.7	73.92	54.3	66.29	59.9	60.10
		48.8	73.77	54.4	66.17	60.0	60.00
		48.9	73.62	54.5	66.05		



Circuit length: 1 mile

Lydden International Motor Racing Circuit
Wotton Canterbury, Kent Tel: 01304 830557

easy TRACK

www.easyTRACK.co.uk

Trackday organisers

easyTRACK Ltd

PO Box 67, Wantage OX12 9GB

Phone: 01235 751854

Email: marcus@easytrack.co.uk

SPA

Nurburgring

Al Ring

Brands Hatch

Silverstone

Rockingham

Acknowledgments

The South East Motor Sport Enthusiast Club would like to thank the following: Credit Professionals, BSW Motorsport, easyTRACK, Tunbridge Wells MC, Rochester MC, Borough 19 MC and all officials and marshals at today's event.