

**"I HERE AVOW MY INTENTION THAT I WILL PARTICIPATE IN THE TT RACE AND I PROCLAIM WITH MY FELLOW EMPLOYEES THAT I WILL POUR ALL MY ENERGY AND CREATIVE POWERS INTO WINNING"**

**Soichiro Honda, 1954.**

1. 1961 - ULTRA LIGHTWEIGHT - MIKE HAILWOOD - 125 HONDA 2. 1961 - LIGHTWEIGHT - MIKE HAILWOOD - 249 HONDA 3. 1962 - LIGHTWEIGHT - DEREK MINTER - 249 HONDA 4. 1962 - ULTRA LIGHTWEIGHT TT - LUIGI TAVERI - 125 HONDA 5. 1963 - LIGHTWEIGHT TT - JIM REDMAN - 250 HONDA 6. 1963 - JUNIOR TT - JIM REDMAN - 350 HONDA 7. 1964 - ULTRA LIGHTWEIGHT TT - LUIGI TAVERI - 125 HONDA 8. 1964 - LIGHTWEIGHT TT - JIM REDMAN - 250 HONDA 9. 1964 - JUNIOR TT - JIM REDMAN - 350 HONDA 10. 1965 - LIGHTWEIGHT TT - JIM REDMAN - 250 HONDA 11. 1965 - JUNIOR TT - JIM REDMAN - 350 HONDA 12. 1965 - 50CC TT - LUIGI TAVERI - 50 HONDA 13. 1966 - LIGHTWEIGHT TT - MIKE HAILWOOD - 250 HONDA 14. 1966 - 50CC TT - RALPH BRYANS - 50 HONDA 15. 1966 - SENIOR TT - MIKE HAILWOOD - 500 HONDA 16. 1967 - LIGHTWEIGHT TT - MIKE HAILWOOD - 250 HONDA 17. 1967 - JUNIOR TT - MIKE HAILWOOD - 297 HONDA 18. 1967 - SENIOR TT - MIKE HAILWOOD - 500 HONDA 19. 1969 - PRODUCTION 500TT - BILL PENNY - 444 HONDA 20. 1971 - PRODUCTION 250TT - BILL SMITH - 249 HONDA 21. 1971 - PRODUCTION 500 - JOHN WILLIAMS - 450 HONDA 22. 1972 - PRODUCTION 250 - JOHN WILLIAMS - 250 HONDA 23. 1973 - PRODUCTION 500TT - BILL SMITH - 500 HONDA 24. 1977 - FORMULA ONE - PHIL READ - 820 HONDA 25. 1977 - FORMULA TWO - ALAN JACKSON - 598 HONDA 26. 1977 - FORMULA THREE - JOHN KIDSON - 398 HONDA 27. 1978 - FORMULA TWO - ALAN JACKSON - 598 HONDA 28. 1978 - FORMULA THREE - BILL SMITH - 398 HONDA 29. 1979 - FORMULA ONE - ALEX GEORGE - 996 HONDA 30. 1979 - FORMULA TWO - ALAN JACKSON - 598 HONDA 31. 1979 - CLASSIC 1000CC - ALEX GEORGE - 996 HONDA 32. 1980 - FORMULA ONE - MICK GRANT - 999 HONDA 33. 1982 - FORMULA ONE - RON HASLAM - 999 HONDA 34. 1983 - FORMULA ONE - JOEY DUNLOP - 850 HONDA 35. 1984 - FORMULA ONE - JOEY DUNLOP - 748 HONDA 36. 1984 - PRODUCTION 750 - TREVOR NATION - 750 HONDA 37. 1985 - FORMULA ONE - JOEY DUNLOP - 748 HONDA 38. 1985 - JUNIOR TT - JOEY DUNLOP - 247 HONDA 39. 1985 - PRODUCTION 250 - MAT OXLEY - 250 HONDA 40. 1985 - PRODUCTION 1500 - GEOFF JOHNSON - 998 HONDA 41. 1985 - SENIOR TT - JOEY DUNLOP - 750 HONDA 42. 1986 - FORMULA ONE - JOEY DUNLOP - 750 HONDA 43. 1986 - JUNIOR TT - STEVE CULL - 249 HONDA 44. 1986 - SENIOR TT - ROGER BURNETT - 500 HONDA 45. 1987 - FORMULA ONE - JOEY DUNLOP - 750 HONDA 46. 1987 - SENIOR TT - JOEY DUNLOP - 750 HONDA 47. 1988 - PRODUCTION.C - BRIAN MORRISON - 600 HONDA 48. 1988 - PRODUCTION.B - STEVE HISLOP - 750 HONDA 49. 1988 - FORMULA ONE - JOEY DUNLOP - 750 HONDA 50. 1988 - JUNIOR TT - JOEY DUNLOP - 250 HONDA 51. 1988 - SENIOR TT - JOEY DUNLOP - 748 HONDA 52. 1989 - SUPERSPORT 600 - STEVE HISLOP - 600 HONDA 53. 1989 - FORMULA ONE - STEVE HISLOP - 750 HONDA 54. 1989 - PRODUCTION 750 - CARL FOGARTY - 750 HONDA 55. 1989 - ULTRA LIGHTWEIGHT TT - ROBERT DUNLOP - 125 HONDA 56. 1989 - SENIOR TT - STEVE HISLOP - 750 HONDA 57. 1990 - FORMULA ONE - CARL FOGARTY - 750 HONDA 58. 1990 - ULTRA LIGHTWEIGHT - ROBERT DUNLOP - 125 HONDA 59. 1990 - SENIOR TT - CARL FOGARTY - 750 HONDA 60. 1991 - FORMULA ONE - STEVE HISLOP - 750 HONDA 61. 1991 - SIDECAR TT 'A' - MICK BODDICE & DAVE WELLS - 600 HONDA 62. 1991 - ULTRA LIGHTWEIGHT TT - ROBERT DUNLOP - 125 HONDA 63. 1991 - SIDECAR TT 'B' - MICK BODDICE & DAVE WELLS - 600 HONDA 64. 1991 - SUPERSPORT 600 - STEVE HISLOP - 600 HONDA 65. 1991 - SENIOR TT - STEVE HISLOP - 750 HONDA 66. 1992 - FORMULA ONE - PHILLIP MCCALLEN - 750 HONDA 67. 1992 - ULTRA LIGHTWEIGHT TT - JOEY DUNLOP - 125 HONDA 68. 1992 - SUPERSPORT 600 - PHILLIP MCCALLEN - 600 HONDA 69. 1993 - FORMULA ONE - NICK JEFFERIES - 750 HONDA 70. 1993 - ULTRA LIGHTWEIGHT TT - JOEY DUNLOP - 125 HONDA 71. 1993 - SUPERSPORT 600 - JIM MOODIE - 600 HONDA 72. 1993 - SENIOR TT - PHILLIP MCCALLEN - 750 HONDA 73. 1994 - FORMULA ONE - STEVE HISLOP - 750 HONDA 74. 1994 - ULTRA LIGHTWEIGHT TT - JOEY DUNLOP - 125 HONDA 75. 1994 - JUNIOR TT - JOEY DUNLOP - 250 HONDA 76. 1994 - SENIOR TT - STEVE HISLOP - 750 HONDA 77. 1995 - FORMULA ONE - PHILLIP MCCALLEN - 750 HONDA 78. 1995 - ULTRA LIGHTWEIGHT TT - MARK BALDWIN - 125 HONDA 79. 1995 - LIGHTWEIGHT TT - JOEY DUNLOP - 250 HONDA 80. 1995 - JUNIOR TT - IAIN DUFFUS - 600 HONDA 81. 1995 - SENIOR TT - JOEY DUNLOP - 750 HONDA 82. 1996 - FORMULA ONE - PHILLIP MCCALLEN - 750 HONDA 83. 1996 - LIGHTWEIGHT TT - JOEY DUNLOP - 250 HONDA 84. 1996 - ULTRA LIGHTWEIGHT - JOEY DUNLOP - 125 HONDA 85. 1996 - JUNIOR TT - PHILLIP MCCALLEN - 600 HONDA 86. 1996 - PRODUCTION RACE - PHILLIP MCCALLEN - 900 HONDA 87. 1996 - SENIOR TT - PHILLIP MCCALLEN - 750 HONDA 88. 1997 - FORMULA ONE - PHILLIP MCCALLEN - 750 HONDA 89. 1997 - LIGHTWEIGHT TT - JOEY DUNLOP - 250 HONDA 90. 1997 - ULTRA LIGHTWEIGHT TT - IAN LOUGHER - 125 HONDA 91. 1997 - JUNIOR TT - IAN SIMPSON - 600 HONDA 92. 1997 - PRODUCTION RACE - PHILLIP MCCALLEN - 900 HONDA 93. 1997 - SENIOR TT - PHILLIP MCCALLEN - 750 HONDA 94. 1998 - FORMULA ONE - IAN SIMPSON - 750 HONDA 95. 1998 - LIGHTWEIGHT TT - JOEY DUNLOP - 250 HONDA 96. 1998 - SIDECAR TT - DAVE MOLYNEUX & DOUG JEWELL - 600 HONDA 97. 1998 - ULTRA LIGHTWEIGHT - ROBERT DUNLOP - 125 HONDA 98. 1998 - SUPERSPORT 400 - PAUL WILLIAMS - 400 HONDA 99. 1998 - JUNIOR - MICHAEL RUTTER - 600 HONDA 100. 1998 - PRODUCTION RACE - JIM MOODIE - 900 HONDA 101. 1998 - SENIOR TT - IAN SIMPSON - 750 HONDA

For Soichiro Honda, racing was in the blood - he had built and raced his own cars long before he ever dreamed of building motorcycles. But when he uttered those immortal words in 1954, not even his astonishing vision could have foreseen the remarkable events of 1 - 12 June 1988. As the company he founded celebrated its 50th anniversary at the Isle of Man TT races, Jim Moodie's

victory in the Production Race notched up Honda TT win number 100; followed swiftly by Ian Simpson's Senior TT victory for number 101.

The technical excellence and mechanical innovation of our technicians and engineers that has led to this phenomenal Isle of Man TT success is to be found in every one of our current range of road going motorcycles. As for the riding, well, you may not be a

Hailwood or a Simpson, or anyone else in between. But you can still be a real rider.

**HONDA**  
REAL RIDERS RIDE HONDA



ALL NEW HONDA MOTORCYCLES 600cc AND ABOVE COME WITH TWO DAYS FREE TRAINING ON THE MOTORCYCLE APPRECIATION COURSE (MAC). ALL NEW HONDA MOTORCYCLES OVER 250CC COME WITH A 2 YEAR UNLIMITED MILEAGE WARRANTY AND TWO YEARS FREE AA COVER. CALL 0345 985 570 FOR A FREE BROCHURE.



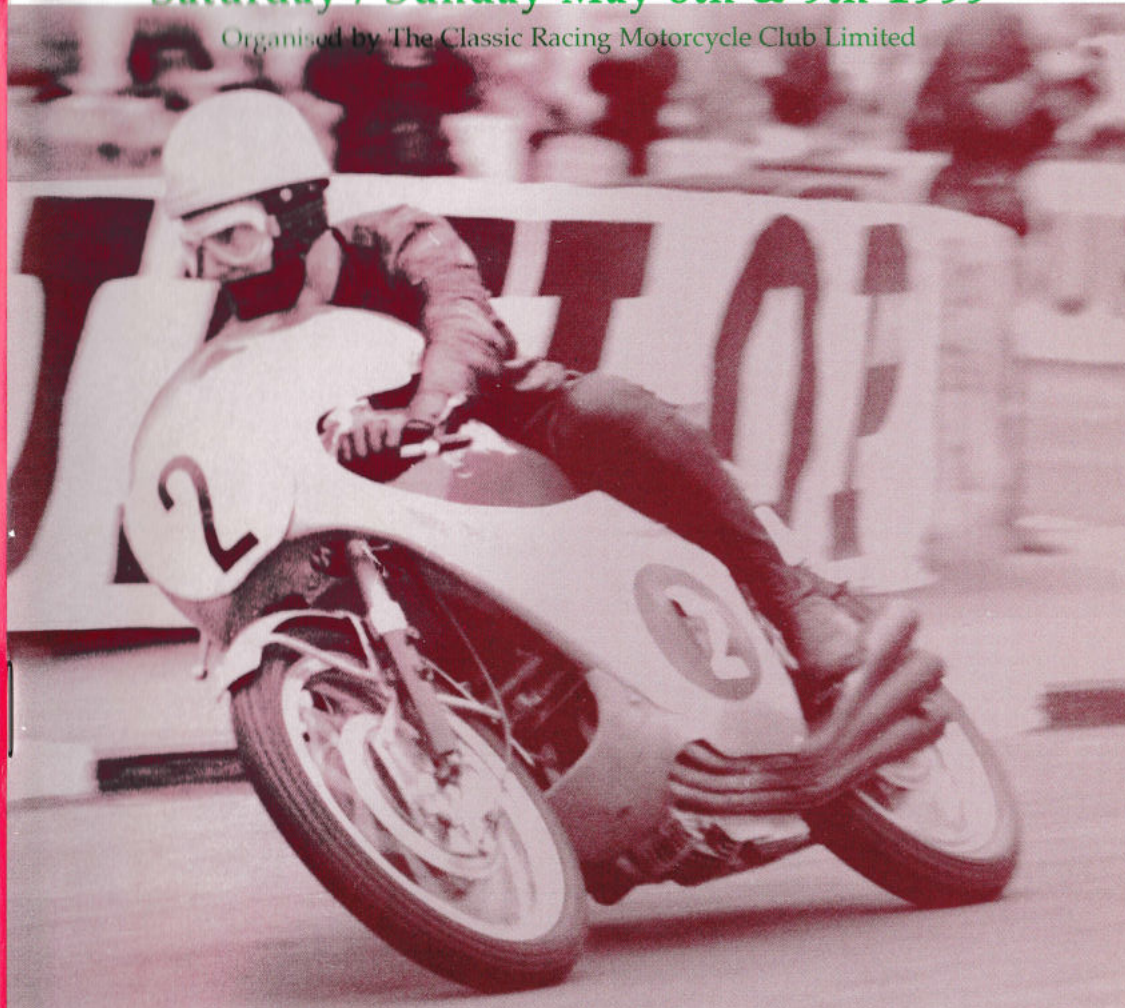
**Classic Racing Motorcycle Club Ltd**

Dedicated to the Preservation and use of Postwar Racing and Sporting Machines

**CLASSIC LYDDEN**

**Saturday / Sunday May 8th & 9th 1999**

Organised by The Classic Racing Motorcycle Club Limited



**The Charlie Sanby Trophy Meeting**

**OFFICIAL PROGRAMME £ 2.00**

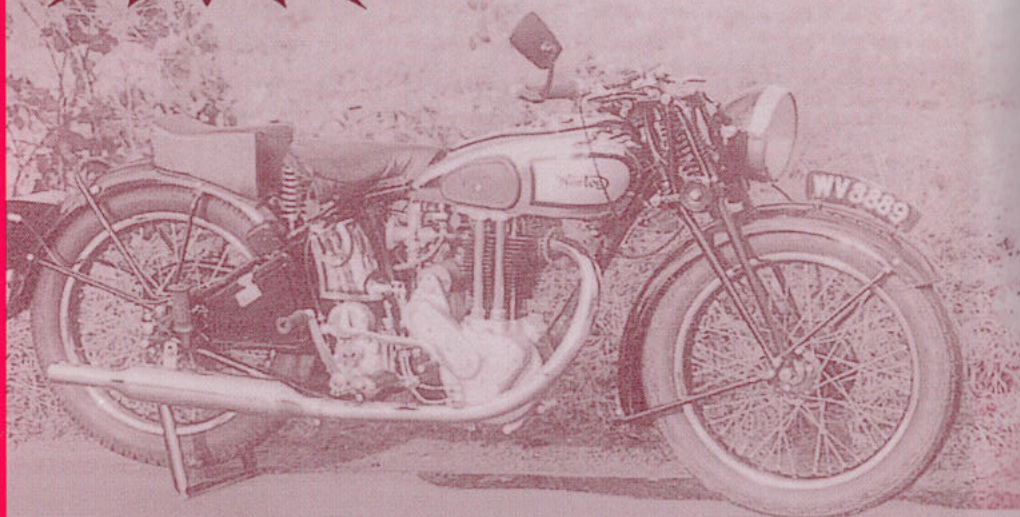
For conditions of admission see inside

# OLD BIKE MART

TAKING OUR MOTORCYCLING PAST INTO THE FUTURE

**ONLY  
£8.50**  
for 12 issues UK  
**£14.75** Europe  
**£18.75** Rest of  
World

1000's of CLASSIFIEDS EACH MONTH  
THE BEST SHOW & AUCTION REPORTS  
HISTORIC & CLASSIC RACING  
CLUB NEWS & EVENTS  
THE ULTIMATE WHAT'S ON LIST



FOR SUBSCRIPTIONS & ADVERTISING ENQUIRIES

P.O. BOX 99, Horncastle, Lincolnshire, LN9 6LZ.

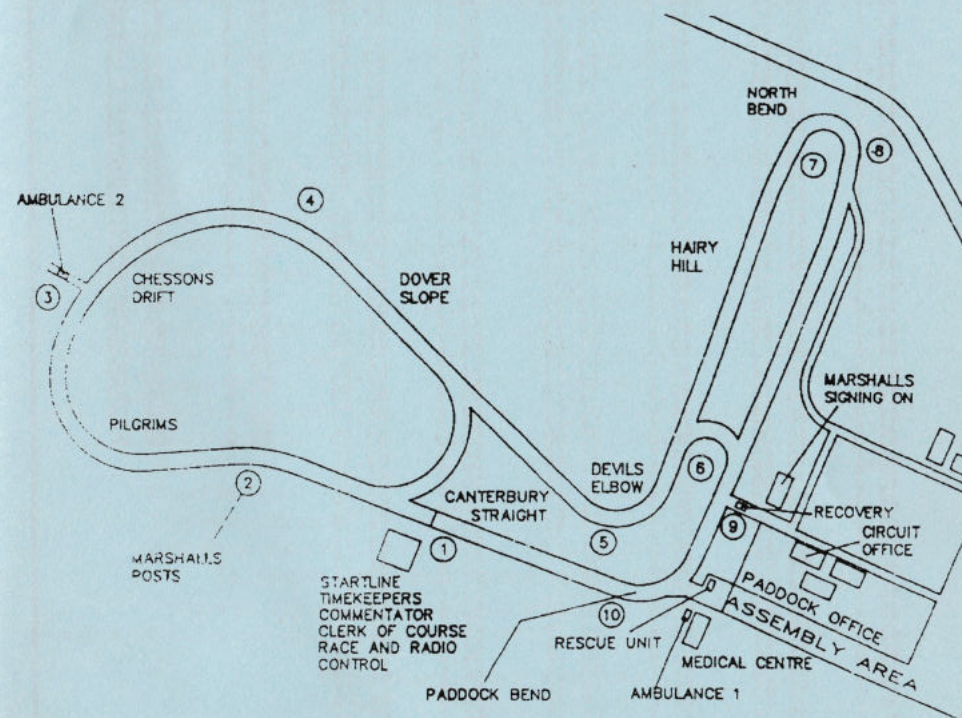
Telephone: +44 (01507) 524004

Fax: +44 (01507) 525002

<http://www.oldbikemart.co.uk>

e-mail: [obm@oldbikemart.co.uk](mailto:obm@oldbikemart.co.uk)

## WELCOME TO THE CHARLIE SANBY TROPHY MEETING AT CLASSIC LYDDEN



### TIMETABLE

**Saturday 8th May 1999**

**Practice 09.15 approx**

**1st Parade approx. 10.45 followed by Race 1**

There will be a lunch break of one hour between 12.00 and 14.00 on Saturday.

**Sunday 9th May 1999**

**Practice 12.30 approx**

**1st Parade approx. 1.00 followed by Race 1**

## LYDDEN SPEED TABLE

Time secs	Speed mph	Time secs	Speed mph	Time secs	Speed mph	Time secs	Speed mph
43.0	83.72	48.0	75.00	53.0	67.92	58.0	62.06
43.1	83.53	48.1	74.84	53.1	67.79	58.1	61.96
43.2	83.33	48.2	74.69	53.2	67.66	58.2	61.85
43.3	83.14	48.3	74.53	53.3	67.54	58.3	61.74
43.4	82.95	48.4	74.38	53.4	67.41	58.4	61.64
43.5	82.76	48.5	74.23	53.5	67.28	58.5	61.53
43.6	82.57	48.6	74.07	53.6	67.16	58.6	61.43
43.7	82.38	48.7	73.92	53.7	67.03	58.7	61.32
43.8	82.19	48.8	73.77	53.8	66.91	58.8	61.22
43.9	82.00	48.9	73.62	53.9	66.79	58.9	61.12
44.0	81.82	49.0	73.47	54.0	66.66	59.0	61.01
44.1	81.63	49.1	73.32	54.1	66.54	59.1	60.91
44.2	81.45	49.2	73.17	54.2	66.42	59.2	60.81
44.3	81.26	49.3	73.02	54.3	66.29	59.3	60.70
44.4	81.08	49.4	72.87	54.4	66.17	59.4	60.60
44.5	80.90	49.5	72.73	54.5	66.05	59.5	60.50
44.6	80.72	49.6	72.58	54.6	65.93	59.6	60.40
44.7	80.54	49.7	72.43	54.7	65.81	59.7	60.30
44.8	80.36	49.8	72.29	54.8	65.69	59.8	60.20
44.9	80.18	49.9	72.14	54.9	65.57	59.9	60.10
45.0	80.00	50.0	72.00	55.0	65.45	60.0	60.00
45.1	79.82	50.1	71.86	55.1	65.33		
45.2	79.65	50.2	71.71	55.2	65.21		
45.3	79.47	50.3	71.57	55.3	65.09		
45.4	79.30	50.4	71.43	55.4	64.98		
45.5	79.12	50.5	71.29	55.5	64.86		
45.6	78.95	50.6	71.15	55.6	64.77		
45.7	78.77	50.7	71.01	55.7	64.63		
45.8	78.60	50.8	70.86	55.8	64.51		
45.9	78.43	50.9	70.72	55.9	64.40		
46.0	78.26	51.0	70.88	56.0	64.28		
46.1	78.09	51.1	70.45	56.1	64.17		
46.2	77.92	51.2	70.31	56.2	64.05		
46.3	77.75	51.3	70.17	56.3	63.94		
46.4	77.59	51.4	70.03	56.4	63.82		
46.5	77.42	51.5	69.90	56.5	63.71		
46.6	77.25	51.6	69.76	56.6	63.60		
46.7	77.09	51.7	69.63	56.7	63.49		
46.8	76.92	51.8	69.49	56.8	63.38		
46.9	76.75	51.9	69.36	56.9	63.26		
47.0	76.60	52.0	69.23	57.0	63.15		
47.1	76.43	52.1	69.09	57.1	63.04		
47.2	76.27	52.2	68.96	57.2	62.93		
47.3	76.11	52.3	68.83	57.3	62.82		
47.4	75.95	52.4	68.70	57.4	62.71		
47.5	75.79	52.5	68.57	57.5	62.60		
47.6	75.63	52.6	68.44	57.6	62.50		
47.7	75.47	52.7	68.31	57.7	62.39		
47.8	75.31	52.8	68.18	57.8	62.28		
47.9	75.15	52.9	68.05	57.9	62.17		

## LYDDEN

Saturday / Sunday 8 / 9 May 1999

A closed to Club competition organised by the Classic Racing Motorcycle Club. Held under the National Sporting Code of the ACU, Standing Regulations of the Auto-Cycle Union for all road races and the Supplementary Regulations and the Final instructions issued by the promoting club. The meeting is classed as Grade E.

A.C.U. Permit No 003880

Course Cert. No. PC 003

### Officials for the Meeting Stewards

A.C.U. To be advised C.R.M.C. Stewards Geoff Waldmeyer/Jackie Peat

<b>Clerk of the Course</b>	Brian Rice
<b>Deputy Clerk of the Course</b>	Les Peat
<b>Secretary of the Meeting</b>	Brenda Millar
<b>Safety Officers</b>	Margaret Sparrow
<b>Timekeeper</b>	Linda Crabtree
<b>Race Recorders</b>	Mary Styles & June Mitchell
<b>Chief Scrutineer</b>	Chris Jones
<b>Noise Meter</b>	Chris Jones
<b>Eligibility Scrutineers</b>	Gordon Russell & Andy Evans
<b>Commentator</b>	Allan Robinson MBE
<b>Starter</b>	Brian Rogers
<b>Chief Marshal</b>	Derek Huckle
<b>Travelling Marshal</b>	Gordon Church
<b>Recovery Vehicles</b>	Keith Baynham

### St. John's Ambulance Association and Brigade

are in attendance with our appreciation and thanks

Thanks are also due to Brentwood Communications for the provision of Radio Communication facilities.

### Promoters of the Meeting The Classic Racing Club Limited.

### Conditions of Admission

Whilst care is taken to establish the bona fides of advertisers, spectators are strongly advised to take their own precautions before parting with money in response to any advertisement. Reprinting in whole or in part of any material in this publication is forbidden without prior permission. Dogs are not permitted on the circuit.

### Postponement of the Meeting

The Club reserves the right to postpone or cancel all or part of the meeting.

### Programme Copyright

The promoters reserve the right to amend or cancel the programme without notice or refund. All literary matter in this programme, including the list of competitors and their racing numbers is copyright and any person found making illegal use thereof will be prosecuted. Although every endeavour is made to avoid inaccuracies in the description of competing motorcycles, the Club accepts no responsibility for any that may occur. It is a condition of admission to these premises that photography, cine-film, video-film, sound or any other visual or audio recording or reproduction of the events or any part or parts of them for any (non private) use, including making copies of the recording/reproduction, causing or permitting it to be seen or heard in public, broadcasting, diffusing, selling, renting, exchanging, lending, using for gain or otherwise dealing with in whole or in part, is strictly prohibited. Use of privately owned camcorders for private viewing purposes only is permitted by the circuit owners with prior permission. Furthermore, Brands Hatch leisure Group Limited reserves the right to confiscate and retain possession of any photographs or film made in breach of this condition and without its express consent in writing.

**LEAFLET DISTRIBUTION IS STRICTLY PROHIBITED**

### Car Park Conditions

Vehicles are taken into the car park on condition that neither the Club or Circuit Company shall be liable for loss or damage to the vehicle or any part or accessory thereof or to any animal or thing left in or about or with any vehicle, in whatever way or by whatever means such loss or damage may be caused.

### ACKNOWLEDGEMENTS

The Classic Racing Motorcycle Club acknowledges with grateful thanks the following individuals, groups and firms:-

The Circuit Management and Staff • Members of the CRMC Marshals Section • All other individuals helping and officiating at this meeting, including office staff, scrutineers, medical staff, committee members, and any others who have contributed in any way to the organisation of the meeting.

Without your help racing could not take place.

We ask all enthusiasts to  
**SUPPORT THOSE WHO SUPPORT THE SPORT**

### FOR SPECTATORS CRMC TERMINOLOGY:

**Period:** Period One machines were produced before December 31st 1963; Period Two machines after January 1st 1964.

**Group:** Group One refers to thoroughbred TT and GP machines; Group Two to short circuit machines and specials; Group Three to sports and production racing machines.

**Post Classic:** is for genuine Grand Prix machines manufactured after the Classic cut off dates.

**Sideplates:** Green denotes up to 250 cc • Blue denotes up to 350cc • Yellow denotes up to 500 cc • White denotes up to 750 cc Red denotes Unlimited

### FLAG SIGNALS

**Red:** Immediately stop racing

**Yellow (Steady):** Signal of danger. (Waved): Slow down, driver must be prepared to stop. OVERTAKING STRICTLY FORBIDDEN.

**National Flag or Green:** Start

**Green:** Course clear.

**Black** displayed with white number: Informs the driver of the motorcycle the number of which is shown that he must stop at the pit on the next lap.

**Yellow with Red stripes:** Deterioration of adhesion of the track surface.

**White:** Slow moving intervention vehicle on track. The white flag informs drivers that they are about to overtake a vehicle which is travelling on the track at much slower speed than competing motorcycles.

**Blue:** Overtaking signal. The blue flag informs the driver that he is going to be overtaken by one or more faster motorcycles.

**Yellow with black diagonal cross:** Start of the last lap.

**Black/White Chequered:** End of Race.

**This meeting is organised by  
Brenda Millar, to whom all  
correspondence regarding this  
meeting should be addressed:**

65 Hillmead  
Gossops Green  
Crawley  
Sussex RH11 8RP

**Anyone Reported using excess  
speed in the Paddock will be  
excluded from the days racing.**

**Monkey Bikes, BMX Bikes.  
Scramble Bikes etc. are not  
allowed in the Paddock**

### SPECTATOR NOTICES

Please do not leave litter about the grounds - take it with you. Remember to drive with care and caution when leaving the grounds. To safeguard both competitors and public - **animals are not admitted. This is most important.**

### PROHIBITED AREA NOTICES.

The public are not permitted in the areas where these notices are displayed. The fences are there for protection and any person or persons found trespassing or wilfully damaging trees, fences etc. will be prosecuted. The promoters reserve the right, without notice, to make any alteration in the race programme.

### SPECIAL NOTICE

It is a condition of the planning permission granted to Lydden Circuit that there will be no engine noise prior to 9 am on weekdays and Saturdays, and 12.30 pm on Sundays, and after 6.00 pm on any day. Will competitors please comply. Furthermore, competitors are forbidden to, and spectators are requested not to, approach or leave the circuit via Wootton Village, enter and exit via A2 only.

### MARSHALS OVERALLS AND TABARDS SPONSORED BY

ADDCO Commercial Components  
(01604 621055)

Andy Evans Racing

Carole Nash Insurance Consultants  
(0161 980 1305)

Dyson King Ltd. (01243 776 739)

J&M Attwood Ltd. -Airfreight Services  
(0181 577 2370)

Mick Hemmings Motorcycles  
(01604 638 505)

Derek Huckle Transport  
(01604 701 832)

Andy Molnar Stainless Engineering  
(01772 700 700)

David Newman(Camshafts) & Co.  
(01689 857 109)

NJB Racing Shocks  
(01621 816 148)

P & M Motorcycles (0181 847 1711)

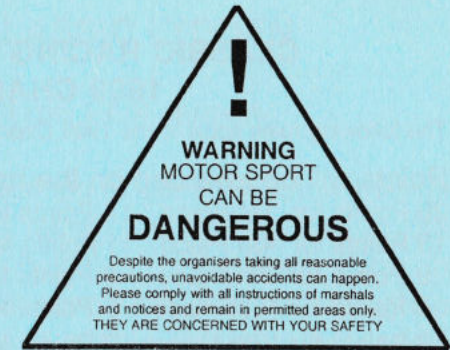
Racing Fifty Enthusiasts Club  
01733 708453

Triple Cycles (0181 478 4807)

John Wittmann -"Witty Ducati"  
(01582 419 769)

Marshals overalls manufactured by  
Slinn Clothing Ltd (0742 314900)

Marshals drinks kindly supplied by Associated Beverage Services Limited



**MOTOR SPORT CAN BE  
DANGEROUS AND  
PERSONS ATTENDING THE  
MEETING DO SO AT THEIR  
OWN RISK**

In the event of an accident,  
**PLEASE REMAIN WHERE YOU  
ARE.** there are doctors in  
attendance at this meeting as well  
as a trained Rescue Unit and St  
Johns Ambulance Personnel.

## CLASSIC RACING MOTORCYCLE CLUB 1999 CHAMPIONSHIPS

The following rules apply to the 1999 Classic Racing Motorcycle Club Championships.

Points will be awarded on the basis of:-

20 Points for 1st Place	17 Points for 2nd Place	15 Points for 3rd Place
13 Points for 4th Place	11 Points for 5th Place	10 Points for 6th Place
9 Points for 7th Place	8 Points for 8th Place	7 Points for 9th Place
6 Points for 10th Place	5 Points for 11th Place	4 Points for 12th Place
3 Points for 13th Place	2 Points for 14th Place	1 Point for 15th Place

**TROPHIES** will be awarded to the first three in each championship class plus Unlimited P1. No Trophies will be awarded in the National Summerfield Eng. / Old Bike Mart Championship.

All races at the following meetings count towards the championships:

Cadwell	4/5 April	Oulton Park	10 July
Lydden	8/9 May	Mallory Park	25 July
Three Sisters	30/31 May	Brands Hatch	7/8 August
Pembrey	19/20 June	Snetterton	11/12 September

### POST CLASSIC IMPORTANT NEWS Group 2 Period 3

This year we have opened up our classes to include a new range of machines. We started our 'Post Classic' series some two or three years ago which was for genuine racing machines raced from the end of the classic period, i.e. from the end of 1972 up to the end of 1981. The idea was to get machines like the RG500 and the ubiquitous Yamaha TZ range from 125 through to the fearsome 750, Rotax's and so on out there scrapping as they did at Grand Prix in the period. It has to be said that although we have had some superb racing from the likes of Mark Pinkney, Chris Rose, Kevin Richards and of course our esteemed chairman Peter Crew we have not had the depth of support we would have wished.

The club has always distinguished between bikes derived from road machinery (group 2) Post Classic was clearly for group 1 and so it seemed an obvious move to allow Group 2 type bikes into the Post Classic event. The type of thing we were hoping to get on the grid were the likes of TT Formula 1,2 &3, P&M Kawasakis and the like. A motion was put forward to the AGM last year to the effect of allowing the committee to begin registering such machines. The AGM passed this motion so we published this change of rules in various publications. To say that there has been considerable interest is to understate the case. Actual registrations are still building but I hope that the spectacle of big four strikes mixing it with TZ 350's will soon be gracing our meetings this year. If you are interested in joining in the fun please find me in the paddock or contact me on 01953 850 677.

**Gordon Russell** - Eligibility Officer, CRMC.

## WELCOME TO CLASSIC LYDDEN

Welcome to our second meeting of the 1999 season.

Anyone who was at our Lydden meeting in 1998 will know that they were treated to some of the best racing the season had to offer; here's hoping for some second helpings! I honestly think that someone put something in the water supply last year that brought out the demon that lurks inside all those affable chaps in the paddock when they get to the start line.

Included in this weekends' programme are more races from the Gold Star Owners Club series as well as usual range of CRMC races. The CRMC experiment to allow bigger grids for the Post Classic class started well at Cadwell Park, let's hope we will see some of those big P&M style kwackers thrashing round this weekend.

Above all lets hope for a weekend of incident free excitement.

*Phil Date*

Editor CRMC

**RACE RESULTS SERVICE**  
Kindly sponsored by  
**TGA RACING SERVICES**  
(situated in the Paddock)

8/05/99  
 Race A 0 Laps  
 Parade of Classic Solo Motorcycles  
 Lap Distance: 1.0000 Miles  
 Race Distance: 0.0000 Miles

**Associated Beverage  
 Services Limited**

The Right Solution  
 Pleased to be Associated with the CRMC

No	Rider	Machine	Year	cc	Town
1					
2	ROSS DYSON	Ducati	1966	250	BOGNOR REGIS
3	DEREK RANDALL	Trilon	1972	750	CROYDON
4	PHILLIP DYSON	Manx Norton	1956	350	BOGNOR REGIS
5	TONY BASTICK	Manx Norton	1955	500	ORPINGTON
6	RICHARD A JEFFREY	Ducati	1964	200	TONBRIDGE
8	RICHARD WOODMAN	Montesa Impala	1967	250	HAYES END
9	NICHOLAS ESH	BSA	1948	350	AMPTHILL
11	DEREK MINTER	Norton	1962	500	WHITSTABLE
12	JOHN DALY	Ducati	1970	350	LUTON
14	CHARLIE MATES	Honda	1972	350	WHITE HART LANE
15	MIKE HOPE	BSA Gold Star	1959	350	SPALDING
18	VIC SELL	AJS	1959	350	LOUGHTON
19	MEL BOUSTEAD	Tricali	1972	500	PETERBOROUGH
20	STEVE HIGGINS	Honda	1963	350	MARGATE
21	MARK LOXLEY	Honda 4	1972	350	HEATHFIELD
23	MICHAEL NORRIS	Honda K4	1969	250	NR GUILDFORD
26	PETER HAYLOCK	Triumph	1970	750	ROMFORD
27	ERIC DOWNEY	Matchless G50	1962	498	CAMBRIDGE
30	DANNY PULLEN	Suzuki	1968	500	ADDLESTONE
31	EDOUARD CHAUDRON	BMW	1974	978	BELGIUM
34	LARRY BARNES	Ducati	1972	249	HARWICH
37	GEOFF ROGERS	Norton	1961	750	FRAMLINGHAM
64	ALAN WOOLLEY	Trilon	1961	650	WOLVERHAMPTON
72	JOHN SNOW	Aermacchi	1967	344	GUILDFORD
74	SUSAN SNOW	DMW	1967	247	GUILDFORD
99	JOHN BAKER	Trilon GP	1962	500	ROCKLAND ST MARY

8/05/99  
 Race 1 8 Laps  
 Carole Nash Championship Race  
 F750 and Group 3 Production  
 Lap Distance: 1.0000 Miles  
 Race Distance: 8.0000 Miles



**CAROLE NASH**  
 INSURANCE CONSULTANTS LTD

No	Rider	Machine	Year	cc	Town
8a					
2	BARRY RODWELL	P&M Trident	1972	750	SUTTON VALENCE
3	PHILIP INGLE	Triumph	1972	750	ABBOTSLEY
4	AXEL SCHILLING	Laverda	1972	744	76131 KARLSRUHE
6	JEAN-PIERRE CAPEL	Seeley Norton	1972	750	BELTIUM
8	PHIL DAVENPORT	RPS Triumph	1972	750	BOURNEMOUTH
9	GERALD FAYUAIS	Moto Guzzi	1971	750	H5500 GIEN
14	YANN DUFOUR	Triumph Weslake		750	ROUEN
18	BARRY GOODING	Miles Trident	1971	750	DEAL
22	PAUL MORGAN	P&M Trident	1972	748	ICKFORD
23	RICHARD BURCH	Egli Laverda	1971	750	NEWBURY
25	RAY WARREN	Miles Trident	1972	750	STANFORD LE HOPE
26	SIMON WALSH	Haylock Triumph	1970	750	GRANTHAM
30	ROUDENKO DIMITRI	Norton Seeley	1971	750	
32	TIM ANTILL	Triumph	1972	741	NR MANSFIELD
33	DANNY BRENNAN	Triumph	1972	750	GUILDFORD
35	DANIEL IMBERG	Rosner Triumph	1972	750	FLITWICK
38	TERENCE MORING	Triumph	1972	750	READING
41	DAVID TURNER	Triumph Trident	1972	750	GUILDFORD
90	ALAN WALSH	Triumph	1972	750	GRANTHAM
8b					
17	BRIAN WACKETT	Triumph	1972	743	WALTHAM ABBEY
36	DAVID JOHN MEAD	Triumph T150T	1968	741	RUGELY
39	BRENDAN RYAN	Triumph	1971	750	HESTON

8/05/99  
 Race 2 8 Laps  
 Honda UK Championship Race  
 250cc & 350 cc Twins  
 Lap Distance: 1.0000 Miles  
 Race Distance: 8.0000 Miles



No	Rider	Machine	Year	cc	Town
4b					
1	KARL HAYES	Suzuki	1967	247	CLAY CROSS
4	KEITH BROWN	Suzuki	1967	246	FARNDON
9	IAIN GREEN	Invicta Arrow	1960	247	ORPINGTON
16	RICHARD BOSHIER	Honda	1962	247	HIGH WYCOMBE
23	KEN RATCLIFFE	Suzuki T20	1967	250	WALTON-ON-THAMES
28	STEVE CLARK	Suzuki	1967	250	CLAY CROSS
30	DANNY PULLEN	Suzuki	1967	250	ADDLESTONE
33	ADAM PIKE	Suzuki T20	1966	247	SINFIN
59	ROBERT EDWARDS	Ariel Arrow	1960	247	LUTON
77	DIXE DEAN	Yamaha	1967	250	THETFORD
6a					
2	MARK DAYNES	Honda	1971	350	THEMELTHORPE
3	LEN COOPER	Honda	1972	350	CROWTHORPE
5	GEOFF TAYLOR	Honda K4	1972	350	MERIDEN
6	PETER WILKINS	Honda K4	1971	350	READING
7	GRAHAM ORRIN	Honda	1971	350	OLNEY
8	BOB SLEIGHTHOLME	Honda K4	1971	350	YORK
11	SIMON FISHER	Honda	1971	350	NR OLNEY
12	RODNEY BOTTING	Honda K4	1972	350	BETCHWORTH
14	ANTHONY AMBLER	Honda CL	1972	350	BRAMPTON
15	IAN AMBLER	Honda	1972	350	BRAMPTON
17	GORDON POWELL	Honda K4	1971	347	BEDWAS
19	PAUL METCALFE	Honda K4	1972	350	SOUTHWELL
20	MARTIN HILL	Honda K4	1971	350	HOCKLEY
21	GEOFF BROWN	Honda	1974	348	SHEFFIELD
22	STEVEN FOSTER	Honda K4	1972	350	THORNLEY
24	CHRISTOPHER AMBLER	Honda K4	1970	350	BRAMPTON
26	PETE CURZONS	Honda K4	1972	346	DORDON
37	PETER BACON	Honda K4	1971	346	KIDLINGTON

8/05/99  
 Race 3 8 Laps  
 500 cc Group 2 - P1 & P2 Championship Race  
 Lap Distance: 1.0000 Miles  
 Race Distance: 8.0000 Miles

No	Rider	Machine	Year	cc	Town
6b					
2	STEVE CATTON	Norton Dominator	1959	500	AYLESBURY
3	TIM HEALY	Norton 88	1962	500	NR SALISBURY
4	BRIAN WHITE	Dresda	1969	490	SLINFOLD
5	LEIGH CLARK	Triumph	1971	490	HARROW
6	CHRIS BARFE	Honda	1971	500	BERGH APTON
7	PAUL POTTER	BSA	1971	500	BETCHWORTH
8	STEPHEN POTTER	Norton	1960	500	ASHFORD
9	NIGEL HEATH	Velocette	1958	499	BANBURY
10	NICK BEDFORD	BSA Gold Star	1960	499	BALSHAM
11	KEITH SOALI	Honda	1966	500	COLCHESTER
12	KIM HICKS	BSA	1971	499	GRAVESEND
14	DON ORCHARD	Triumph	1973	500	ARUNDEL
15	BARRY DURKIN	Norton	1961	500	WOLVERHAMPTON
16	IAN BAINBRIDGE	BSA	1972	500	BARNARD CASTLE
17	ADAM WILSON	Honda	1971	500	LONDON
18	MARK CAMPION	Seeley Triumph	1972	492	LANCASTER
19	BRIAN WILLIMONT	Triumph	1967	500	ROMFORD
28	KEITH JAGGARD	Triumph	1969	490	RUGBY
32	JOHN ALLEN	Dresda	1970	492	TWICKENHAM
64	NIC POWELL	Triumph	1968	490	RUGBY
77	CLIFF RANSLEY	Velo VM	1966	500	HORNSEY

LYDDEN CIRCUIT IS OWNED AND OPERATED BY  
 BRITISH MOTOR CYCLE RACING CLUB LIMITED  
 Wootton, Nr. canterbury, Kent CT4 6RX  
 Telephone: 01304 830 557 Fax: 01304 831 715  
 Circuit Manager : Pauline Santer

8/05/99  
 Race 4 8 Laps  
 R & E Presswork Championship Race  
 251 - 350 cc Single Cylinders  
 Lap Distance: 1.0000 Miles  
 Race Distance: 8.0000 Miles

No	Rider	Machine	Year	cc	Town
4a					
1	JERRY SUMMERFIELD	Petty Manx	1970	349	WIRKEWORTH
2	ROBERT ROWE	Manx Norton	1960	349	ASHFORD
3	JERRY WEST	BSA B40	1970	350	WEST WIMBLEDON
4	NICK HOUGHTON	Ducati	1972	350	OAKHAM
5	NICHOLAS HOOPER	Ducati	1964	350	DARTFORD
6	RICHARD SALISBURY	Aermacchi	1970	350	WESTERHAM
7	SHAUN HARVEY	Greeves Oulton	1968	344	ONGAR
8	ANDY REYNOLDS	Seeley AJS		349	BERKHAMSTED
10	HANS-GEORG STUTZ	Norton Manx	1961	350	D-36275 KIRCHHEIM
15	PETER CREW	Higley Evans	1967	350	SANDHURST
16	STEVE TOMES	AJS	1966	350	BELPER
17	BOB WARREN	AJS	1961	349	NR WROTHAM
18	MARTIN HUDSON	Seeley 7R	1960	349	ANDOVER
20	PHILIP SHARP	Aermacchi	1967	350	ALBURY
23	BILL DAVIDSON	BSA B40	1971	350	BELVERDERE
24	DAVID HARRISON	Ducati	1972	350	SOLIHULL
28	TONY HIERONS	Aermacchi Melisse	1968	349	LEATHERHEAD
30	DAVID JAMES	Aermacchi	1968	349	PEVENSLEY
36	ADRIAN ARMSON	Colton Teistar	1964	350	WOODHOUSE
37	NIGEL PALMER	Ducati	1967	350	GEDDINGTON
39	LEN HOMER	Ducati	1968	348	MILTON KEYNES
40	LUKE NOTTON	Dubsa	1972	342	WARBOYS
53	VIC HASKELL	Rickman Gold Star	1968	348	LINCOLN
61	RON KEY	Gold Star	1955	350	WOLVERHAMPTON
71	DOUGLAS SNOW	Ducati	1967	340	GUILDFORD

### MARSHALS:

If you would like to be part of the action and spectacle of top flight Classic Motorcycle Racing but don't race yourself then the club is always looking for marshals to help either at trackside or behind the scenes with organising our hectic race days. Full details of how you could help are available from our marshals Co-ordinator. Telephone Jackie Peat on 01842 879 311 or fax 01842 879 312

8/05/99  
 Race 5 8 Laps  
 Boyer Bransden Championship  
 501 cc - Unlimited P1 & P2  
 Lap Distance: 1.0000 Miles  
 Race Distance: 8.0000 Miles

Boyer Bransden Ignitions  
*Electrifying Performance*  
 Tel: 01622 730 939

No	Rider	Machine	Year	cc	Town
5a					
5	LEN HUNT	Norton	1953	750	COLCHESTER
7	KEVIN HINTON	Triton	1960	649	ROCHESTER
24	DAVID HARRISON	Triton	1959	650	SOLIHULL
28	STEPHEN BATCHELOR	Triton	1961	650	SANDWICH
29	TIM O'CONNELL	Norton	1985	650	FARNBOROUGH
40	ROBERT PATON	Triton	1953	750	CHELMSFORD
5b					
2	BARRY RODWELL	P&M Trident	1972	940	SUTTON VALENCE
4	AXEL SCHILLING	Laverda	1972	860	76131 KARLSRUHE
10	ADRIAN COOPER	Norton	1971	920	FLITTON
11	MAXIMILIEN JARRY	BMW	1971	1020	45500 GIEN
12	DAVID BARRETT	Ducati	1974	905	CRANFIELD
15	KEITH RICHARDSON	Rickman Norton	1975	840	SPILSBY
16	ROY ROBERTSON	Egli Vincent	1972	1272	WORTHING
18	BARRY GOODING	Capon Vincent	1970	998	DEAL
19	ALAN FOSTER	Norton Melissae	1970	750	WOLVERHAMPTON
20	JEFFREY JONES	Triumph	1970	748	DUNSTABLE
21	JOHN JONES	Seeley Norton	1971	745	DUNSTABLE
23	RICHARD BURCH	Egli Laverda	1971	750	NEWBURY
27	GORDON RUSSELL	Seeley Weslake	1971	750	NORWICH
31	PAUL HOGAN	BMW	1972	1000	MEOPHAM
34	NICHOLAS SEARS	Seeley Norton		749	BIGGLESWADE
38	TERENCE MORING	Triumph	1972	830	READING
42	JOHN DOWNS	BMW	1972	998	
77	CLIFF RANSLEY	Dresda	1971	750	HORNSEY



8/05/99  
 Race 6 8 Laps  
 Atlantic Motorcycles Championship  
 Sidecars - P1 & P2  
 Lap Distance: 1.0000 Miles  
 Race Distance: 8.0000 Miles

## ATLANTIC MOTORCYCLES CHAMPIONSHIP

No	Driver and Passenger	Machine	Year	cc	Home Town
2a					
4	DAVID RAMSDEN / YVONNE OADES	BMW	1972	750	CLECKHEATON
8	KEITH MILLAR / TERRY KELLY	BMW	1972	750	CRAWLEY
10	ROD CLAPHAM / PAUL COATES	BMW	1970	1000	LEEDS
22	DENNIS ETHERIDGE / CHRISTINE ETHERIDGE	Norton	1967	750	MAIDSTONE
23	JEAN-CLAUDE LUIJCKX / KRIS ??	Norton		500	HOLLAND
24	PAUL THOMAS / NANCY THOMAS	Triton	1960	650	COLCHESTER
76	LARRY LEWIS / KATY LEWIS	Triumph	1952	650	TUNBRIDGE WELLS
99	ADRIAN DEDMAN / THERESA LANGFORD	Norton	1958	745	ELY
2b					
2	IAN Mc GHEE / GORDON LUNDBERG	Weslake	1972	900	HITCHIN
6	JEAN-PIERRE CAPEL / DAMIEN VAN PEE	Windle Nourish	1972	900	BELTIUM
7	MICHEL LEDERMANN / BERNADETTE LEDERMANN	Windle Triumph	1972	830	1150 BEUXELLES
9	SEAN REEVES / SARAH EVANS	Saab	1965	750	ASHFORD
11	ANDY EVANS / KEVIN SCOTT	Windle Trident	1971	860	DEXLEY
12	JOHN ANSON / DAVID WELLS	Imp	1971	998	BEWDLEY
20	JOHN SMITH / DANIEL RUDKIN	Triumph Weslake	1972	750	SWAFFHAM
21	KEITH LATHERON / DAVID LATHERON	Imp	1970	998	LEIGH
35	RAYMOND REEVES / JOHN MARSHALL	Windle Weslake	1972	880	ASHFORD

8/05/99  
 Race 7 8 Laps  
 Gold Star Owners Club Race  
 350 cc and 500cc Gold Stars  
 Lap Distance: 1.0000 Miles  
 Race Distance: 8.0000 Miles

No	Rider	Machine	Year	cc	Town
30a					
5	KAY STREETS	Gold Star DB32	1956	350	HALIFAX
6	DAVID STREETS	Gold Star DB32	1956	350	EDENBRIDGE
7	PAUL STEWART	Gold Star CB32	1955	350	LINCOLN
14	TERENCE COVILL	BSA Gold Star	1958	350	NEW BARNET
53	VIC HASKELL	Rickman Gold Star	1968	348	LINCOLN
30b					
2	ANDY MARCHINGTON	Gold Star DBD34	1957	500	WOKINGHAM
3	BRIAN TUTTLEBEE	Gold Star Norton	1954	500	STIBBINGTON
4	GRAHAM PICKSLEY	BSA Gold Star	1956	500	LOUGHBOROUGH
8	ALAN KYSON	Norton Gold Star	1958	500	AYLESBURY
9	DALE WILKINSON	Gold Star	1954	500	WARSOP
10	NICK BEDFORD	BSA Gold Star	1960	499	BALSHAM
11	WAYNE SCHOLTER	Gold Star Manx		500	TOTON
12	GEORGE GOLDIE	Seeley Gold Star	1971	500	KILMARNOCK
14	TERENCE COVILL	BSA Gold Star	1958	350	NEW BARNET
15	MIKE HOPE	BSA Gold Star	1958	500	SPALDING
23	PETER SULLIVAN	Norton Gold Star	1956	500	RUGBY
24	MICK MIDDLEMAS	Seeley Gold Star	1957	499	BROUGHTON ASTLEY

Period I and Period II Sidecars are catered for within the Atlantic Sidecar Championship. **Computer Training Services** will donate the end of year championship trophies for the Period I competitors.

8/05/99  
 Race 8 8 Laps  
 Post Classic Championship Race  
 G1 and G2 Post Classic Machines  
 Lap Distance: 1.0000 Miles  
 Race Distance: 8.0000 Miles

No	Rider	Machine	Year	cc	Town
2	ANDY MARCHINGTON	Suzuki RG500	1981	500	WOKINGHAM
3	ADAM BEXLEY	Yamaha	1980	500	HOOK
4	MICHAEL RUSSELL	Yamaha TZ	1980	359	NORWICH
6	MARK PINCKNEY	Exactweld Yamaha	1981	250	BISHOPS STORTFORD
8	PHIL DAVENPORT	Harris TZ	1981	350	BOURNEMOUTH
9	TERRY SMITH	Maxton Yamaha	1980	350	GRANTHAM
10	ANDREW MAHON	Spondon TZE	1978	347	NUNEATON
15	PETER CREW	Yamaha TZ	1980	350	SANDHURST
20	RICHARD PARKER	Yamaha TZ	1981	350	SWADLINCOTE
50	KEVIN RICHARDS	Yamaha TZ	1981	350	FAVERSHAM

9b

5	IAN SALTER	Yamaha RD250LC	1981	250	ROMFORD
7	NICK STRATTON	P&M Kawasaki	1980	1075	COLCHESTER
11	MICHAEL CQBB	Honda	1974	408	BROADSTAIRS
23	IAN DENNY	Yamaha	1978	400	DIDCOT
25	RAY WARREN	P&M Kawasaki	1976	998	STANFORD LE HOPE
37	PHIL TODD	Laverda	1980	1127	WHYTELEAFE
77	IAN BENTLEY - HOLROYD	P&M Honda	1977	750	SOUTHAM

### MARSHALS OVERALLS

The CRMC are indebted to all those who have helped us to provide the overalls for use by our marshals. If you think you or your business could sponsor the provision of a pair of overalls for the modest sum of £25 please contact our marshals Co-ordinator Jackie Peat on 01842 879 311 or fax 01842 879 312

8/05/99  
 Race 9 8 Laps  
 Honda UK Championship Race  
 Up to 200 cc  
 Lap Distance: 1.0000 Miles  
 Race Distance: 8.0000 Miles



No	Rider	Machine	Year	cc	Town
2	RICHARD GILHAM	Triumph Cub	1963	200	CRANLEIGH
3	JOHN BOWERS	Honda	1970	198	FAREHAM
4	DANIEL BOWERS	Honda	1970	190	FAREHAM
5	NIGEL BANKS	Honda	1971	197	DOWNHAM MARKET
6	PETER TANNER	Triumph	1963	200	GOMELDON
7	KEITH DAVIS	Bullaco	1963	196	WATFORD
11	ROGER NICHOLS	Honda	1971	125	MITCHAM
12	SIMON SCROGGINS	Triumph	1965	200	MITCHAM
15	DAVID GILBERT	Suzuki	1967	196	HERSHAM
17	CLIFF FIGES	Minarelli	1971	50	SHEPHERDSWELL
18	ANDY BLUEMAN	Honda CR93	1965	198	SOUTHEND ON SEA
20	FRANK WEBB	Tiger Cub	1960	200	FINCHAMSTEAD
21	CHRISTOPHER GREGORY	CR93 Rep	1968	198	WESTCLIFF ON SEA
22	JOHN LEE	Triumph Tiger Cub	1965	199	NR RUGBY
23	IAN DENNY	Minarelli	1970	49	DIDCOT
24	CHRISTIAN GREGORY	CR93 Rep	1965	198	WESTCLIFF ON SEA
25	GARETH CREW	Honda	1972	200	SANDHURST
30	STEVE BEDFORD	Minarelli	1972	50	PETERBOROUGH
50	HANS BREGT	Jamathi		50	ROTTERDAM
58	MARK CARKEEK	Bantam	1965	125	KETTERING

8/05/99  
 Race 10 8 Laps  
 Summerfield Eng. Championship Race  
 350 & 500 cc Group 1 P1 & P2  
 Lap Distance: 1.0000 Miles  
 Race Distance: 8.0000 Miles

**SUMMERFIELD  
 ENGINEERING  
 LIMITED**

No	Rider	Machine	Year	cc	Town
7a					
1	JERRY SUMMERFIELD	Petty Norton	1961	500	WIRKEWORTH
2	ROBERT ROWE	Manx Norton	1960	499	ASHFORD
3	PHIL BEATON	G50 Melisse	1963	500	LITTLEHAMPTON
4	NICK HOUGHTON	Seeley Nourish	1972	500	OAKHAM
5	MICK MORETON	Seeley G50	1970	496	STOURPOER ON SEVERN
6	BRIAN PENFOLD	Manx Norton	1958	499	TUNBRIDGE WELLS
7	ERIC QUARTIER	G50 Seeley	1967	496	
8	VERNON GLASHIER	Rutter Matchless	1972	496	DUNMOW
9	TIM JACKSON	Norton	1958	500	NORTON LINDSEY
10	HANS-GEORG STUTZ	Petty Manx	1970	500	D-36275 KIRCHHEIM
11	TONY SMITH	Matchless	1962	500	READING
12	GEORGE GOLDIE	Seeley G50		500	KILMARNOCK
14	DESMOND WOOTON	Manx Norton	1958	500	DAVENTRY
16	STEVE TOMES	Norton Manx		500	BELPER
18	MARTIN HUDSON	Seeley G50	1968	496	ANDOVER
19	BRUCE CARTER	Allen Manx	1961	499	TADLEY
22	PAUL MORGAN	Seeley Matchlessw MkII	1968	498	ICKFORD
23	YVES BIRAUD	Seeley G50		500	94140 ALFORTVILLE
24	ANDREW EITE,	Manx	1961	499	BOLTON
27	GORDON RUSSELL	Manx Norton	1958	500	NORWICH
28	TONY HIERONS	Seeley G50	1970	496	LEATHERHEAD
33	ANDY PIKE	Seeley G50	1970	500	LOUGHBOROUGH
71	DOUGLAS SNOW	Seeley	1972	496	GUILDFORD
7b					
17	BOB WARREN	AJS	1961	349	NR WROTHAM
20	PHILIP SHARP	Aermacchi	1967	350	ALBURY

A Classic Racing Motorcycle Club Promotion

8/05/99  
 Race 11 8 Laps  
 Arai Helmet Championship Race  
 250 cc Single Cylinder  
 Lap Distance: 1.0000 Miles  
 Race Distance: 8.0000 Miles



No	Rider	Machine	Year	cc	Town
3a					
2	RICHARD BOOL	Ducati	1964	248	DATCHET
3	ROBIN READ	BSA	1970	250	STONDON
4	CHARLES WATSON	Ducati	1968	250	AYLESFORD
5	JAMES TOLEMAN	Ducati Monza	1968	250	TWICKENHAM
6	ROY RANDALL	Ducati	1964	250	WEST WICKHAM
7	ROBERT DAVIES	Ducati	1964	250	MALDON
8	WIL SMITH	Ducati	1967	250	SWAFFHAM
9	ROBIN SCUDDER	Ducati	1968	250	READING
10	ROY GILLARD	Ducati	1972	248	SAFFRON WALDEN
11	TERRY CONNER	Ducati	1969	250	GOSPEL OAK
12	JOHN BRADLEY	Montesa	1967	250	YORK
14	CHRIS WALLACE	Ducati	1972	250	BUNTINGFORD
15	KEITH RICHARDSON	Montesa	1968	248	SPILSBY
16	DANIEL SHARMAN	Ducati	1972	250	GILLINGHAM
17	PETER ASTON	Greeves	1966	250	WITHERLEY
18	DEREK JORDAN	Colton	1965	247	LEICESTER
19	COLIN SPARROW	Greeves	1966	259	CHESHUNT
20	STEVE CROOK	Ducati	1966	250	CAMBRIDGE
21	MERVYN STRATFORD	Greeves	1966	247	NR AYLESBURY
22	BRIAN FOSTER	Colton	1964	250	HERTFORD
24	MARTIN HANLON	Colton	1964	247	CHESHAM
25	BRIAN MIDGLEY	Triumph	1971	250	NR BARNSELY
26	ALAN SMALLBONES	Ducati	1966	250	LINCOLN
27	NEIL ROGERS	Ducati Mach 1		250	BORDON
28	TONY HIERONS	Saxon Ducati	1966	250	LEATHERHEAD
29	STEPHEN BATH	Ducati	1969	250	ST LEONARDS ON SEA
30	DAVID JAMES	Aermacchi	1963	248	PEVENSLEY
37	NIGEL PALMER	Ducati	1960	250	GEDDINGTON
50	JOHN HYNES	Ducati	1967	250	NR WINCHESTER
74	THOMAS SNOW	DMW	1967	247	GUILDFORD

A Classic Racing Motorcycle Club Promotion

8/05/99  
 Race B 0 Laps  
 Parade of Classic Solo Motorcycles  
 Lap Distance: 1.0000 Miles  
 Race Distance: 0.0000 Miles

**Associated Beverage  
 Services Limited**

The Right Solution  
 Pleased to be Associated with the CRMC

No	Rider	Machine	Year	cc	Town
1					
2	ROSS DYSON	Ducati	1966	250	BOGNOR REGIS
3	DEREK RANDALL	Trilon	1972	750	CROYDON
4	PHILLIP DYSON	Manx Norton	1956	350	BOGNOR REGIS
5	TONY BASTICK	Manx Norton	1955	500	ORPINGTON
6	RICHARD A JEFFREY	Ducati	1964	200	TONBRIDGE
8	RICHARD WOODMAN	Montesa Impala	1967	250	HAYES END
11	DEREK MINTER	Norton	1962	500	WHITSTABLE
12	JOHN DALY	Ducati	1970	350	LUTON
14	CHARLIE MATES	Honda	1972	350	WHITE HART LANE
18	VIC SELL	AJS	1959	350	LOUGHTON
19	MEL BOUSTEAD	Ducati	1972	350	PETERBOROUGH
20	STEVE HIGGINS	Honda	1963	350	MARGATE
21	MARK LOXLEY	Honda 4	1972	350	HEATHFIELD
22	MICHAEL WAUGH	Laverda	1979	552	GRINSBY
23	MICHAEL NORRIS	Honda K4	1969	250	NR GUILDFORD
26	PETER HAYLOCK	Triumph	1970	750	ROMFORD
27	ERIC DOWNEY	Matchless G50	1962	498	CAMBRIDGE
31	EDOUARD CHAUDRON	BMW	1974	978	BELGIUM
34	LARRY BARNES	Ducati	1972	249	HARWICH
37	GEOFF ROGERS	Norton	1961	750	FRAMLINGHAM
64	ALAN WOOLLEY	Trilon	1961	650	WOLVERHAMPTON
72	JOHN SNOW	Aermacchi	1967	344	GUILDFORD
74	SUSAN SNOW	DMW	1967	247	GUILDFORD
99	JOHN BAKER	Trilon GP	1962	500	ROCKLAND ST MARY

8/05/99  
 Race 12 8 Laps  
 Carole Nash Championship Race  
 F750 and Group 3 Production  
 Lap Distance: 1.0000 Miles  
 Race Distance: 8.0000 Miles



**CAROLE NASH**  
 INSURANCE CONSULTANTS LTD

No	Rider	Machine	Year	cc	Town
8a					
2	BARRY RODWELL	P&M Trident	1972	750	SUTTON VALENCE
3	PHILIP INGLE	Triumph	1972	750	ABBOTSLEY
4	AXEL SCHILLING	Laverda	1972	744	76131 KARLSRUHE
6	JEAN-PIERRE CAPEL	Seeley Norton	1972	750	BELTIUM
8	PHIL DAVENPORT	RPS Triumph	1972	750	BOURNEMOUTH
9	GERALD FAYUAIS	Moto Guzzi	1971	750	H5500 GIEN
14	YANN DUFOUR	Triumph Weslake		750	ROUEN
18	BARRY GOODING	Miles Trident	1971	750	DEAL
22	PAUL MORGAN	P&M Trident	1972	748	ICKFORD
25	RAY WARREN	Miles Trident	1972	750	STANFORD LE HOPE
26	SIMON WALSH	Haylock Triumph	1970	750	GRANTHAM
30	ROUDENKO DIMITRI	Norton Seeley	1971	750	
32	TIM ANTILL	Triumph	1972	741	NR MANSFIELD
33	DANNY BRENNAN	Triumph	1972	750	GUILDFORD
35	DANIEL IMBERG	Rosner Triumph	1972	750	FLITWICK
38	TERENCE MORING	Triumph	1972	750	READING
41	DAVID TURNER	Triumph Trident	1972	750	GUILDFORD
90	ALAN WALSH	Triumph	1972	750	GRANTHAM
8b					
17	BRIAN WACKETT	Triumph	1972	743	WALTHAM ABBEY
36	DAVID JOHN MEAD	Triumph T150T	1968	741	RUGELY
39	BRENDAN RYAN	Triumph	1971	750	HESTON



8/05/99  
 Race 14 8 Laps  
 Honda UK Championship Race  
 250cc & 350 cc Twins  
 Lap Distance: 1.0000 Miles  
 Race Distance: 8.0000 Miles



No	Rider	Machine	Year	cc	Town
4b					
1	KARL HAYES	Suzuki	1967	247	CLAY CROSS
4	KEITH BROWN	Suzuki	1967	246	FARNDON
9	IAIN GREEN	Invicta Arrow	1960	247	ORPINGTON
16	RICHARD BOSHER	Honda	1962	247	HIGH WYCOMBE
23	KEN RATCLIFFE	Suzuki T20	1967	250	WALTON-ON-THAMES
28	STEVE CLARK	Suzuki	1967	250	CLAY CROSS
30	DANNY PULLEN	Suzuki	1967	250	ADDLESTONE
33	ADAM PIKE	Suzuki T20	1966	247	SINFIN
59	ROBERT EDWARDS	Ariel Arrow	1960	247	LUTON
77	DIXE DEAN	Yamaha	1967	250	THETFORD
6a					
2	MARK DAYNES	Honda	1971	350	THEMELTHORPE
3	LEN COOPER	Honda	1972	350	CROWTHORPE
5	GEOFF TAYLOR	Honda K4	1972	350	MERIDEN
6	PETER WILKINS	Honda K4	1971	350	READING
7	GRAHAM ORRIN	Honda	1971	350	OLNEY
8	BOB SLEIGHTHOLME	Honda K4	1971	350	YORK
11	SIMON FISHER	Honda	1971	350	NR OLNEY
12	RODNEY BOTTING	Honda K4	1972	350	BETCHWORTH
14	ANTHONY AMBLER	Honda CL	1972	350	BRAMPTON
15	IAN AMBLER	Honda	1972	350	BRAMPTON
17	GORDON POWELL	Honda K4	1971	347	BEDWAS
19	PAUL METCALFE	Honda K4	1972	350	SOUTHWELL
20	MARTIN HILL	Honda K4	1971	350	HOCKLEY
21	GEOFF BROWN	Honda	1974	348	SHEFFIELD
22	STEVEN FOSTER	Honda K4	1972	350	THORNLEY
24	CHRISTOPHER AMBLER	Honda K4	1970	350	BRAMPTON
26	PETE CURZONS	Honda K4	1972	346	DORDON
37	PETER BACON	Honda K4	1971	346	KIDLINGTON

8/05/99  
 Race 15 8 Laps  
 Atlantic Motorcycles Championship  
 Sidecars - P1 & P2  
 Lap Distance: 1.0000 Miles  
 Race Distance: 8.0000 Miles

## ATLANTIC MOTORCYCLES CHAMPIONSHIP

No	Driver and Passenger	Machine	Year	cc	Home Town
2a					
4	DAVID RAMSDEN / YVONNE OADES	BMW	1972	750	CLECKHEATON
8	KEITH MILLAR / TERRY KELLY	BMW	1972	750	CRAWLEY
10	ROD CLAPHAM / PAUL COATES	BMW	1970	1000	LEEDS
22	DENNIS ETHERIDGE / CHRISTINE ETHERIDGE	Norton	1967	750	MAIDSTONE
23	JEAN-CLAUDE LUJCX / KRIS ??	Norton		500	HOLLAND
24	PAUL THOMAS / NANCY THOMAS	Triton	1960	650	COLCHESTER
76	LARRY LEWIS / KATY LEWIS	Triumph	1952	650	TUNBRIDGE WELLS
99	ADRIAN DEDMAN / THERESA LANGFORD	Norton	1958	745	ELY
2c					
3	ALAN CAVEY / JIM LAIDER	Fiddaman Triumph	1963	670	HAWKHURST
5	RICHARD HOLMES / MARTIN CASBON	BSA	1970	750	WOODFORD GREEN
14	ROGER FARRINGTON / MICHAEL FARRINGTON	Norton	1972	830	WATFORD VILLAGE
15	BILL MC LAREN / PAUL KING	Yamaha	1972	840	CARSHALTON
16	NICHOLAS LUCOCK / SIMON DACTLER	BSA	1970	750	NR SANDY
17	ROD DAWE / BRIAN ROBSON	Lynx Yamaha	1972	880	DUSTON
18	VINCENT WORTHINGTON / LINDA MCSHANE	Yamaha	1972	880	ERITH
19	MATHYS KERSTEN / Anja Vereyken	Triumph	1966	650	
71	JAN HERBERT / ALAN BEDFORD	Windle Imp	1970	998	CHELMSFORD

### REMAINING CRMC RACE DATES FOR 1999

<b>Sunday / Monday</b>	<b>30/31 May</b>	<b>Three Sisters</b>
<b>Saturday / Sunday</b>	<b>19/20 June</b>	<b>Pembrey</b>
<b>Saturday,</b>	<b>10 July</b>	<b>Oulton Park</b>
<b>Sunday</b>	<b>25 July</b>	<b>Mallory Park</b>
<b>Saturday / Sunday</b>	<b>7/8 August</b>	<b>Brands Hatch</b>
<b>Saturday / Sunday</b>	<b>11/12 September</b>	<b>Snetterton</b>

8/05/99  
 Race 16 8 Laps  
 500 cc Group 2 - P1 & P2 Championship Race  
 Lap Distance: 1.0000 Miles  
 Race Distance: 8.0000 Miles

No	Rider	Machine	Year	cc	Town
2	STEVE CATTON	Norton Dominator	1959	500	AYLESBURY
3	TIM HEALY	Norton 88	1962	500	NR SALISBURY
4	BRIAN WHITE	Dresda	1969	490	SLINFOLD
5	LEIGH CLARK	Triumph	1971	490	HARROW
6	CHRIS BARFE	Honda	1971	500	BERGH APTON
7	PAUL POTTER	BSA	1971	500	BETCHWORTH
8	STEPHEN POTTER	Norton	1960	500	ASHFORD
9	NIGEL HEATH	Velocette	1958	499	BANBURY
10	NICK BEDFORD	BSA Gold Star	1960	499	BALSHAM
11	KEITH SOALL	Honda	1966	500	COLCHESTER
12	KIM HICKS	BSA	1971	499	GRAVESEND
14	DON ORCHARD	Triumph	1973	500	ARUNDEL
15	BARRY DURKIN	Norton	1961	500	WOLVERHAMPTON
16	IAN BAINBRIDGE	BSA	1972	500	BARNARD CASTLE
17	ADAM WILSON	Honda	1971	500	LONDON
18	MARK CAMPION	Seeley Triumph	1972	492	LANCASTER
19	BRIAN WILLIMONT	Triumph	1967	500	ROMFORD
28	KEITH JAGGARD	Triumph	1969	490	RUGBY
32	JOHN ALLEN	Dresda	1970	492	TWICKENHAM
64	NIC POWELL	Triumph	1968	490	RUGBY
77	CLIFF RANSLEY	Velo VM	1966	500	HORNSEY

3b

8/05/99  
 Race 17 8 Laps  
 R & E Presswork Championship Race  
 251 - 350 cc Single Cylinders  
 Lap Distance: 1.0000 Miles  
 Race Distance: 8.0000 Miles

No	Rider	Machine	Year	cc	Town
1	JERRY SUMMERFIELD	Petty Manx	1970	349	WIRKEWORTH
2	ROBERT ROWE	Manx Norton	1960	349	ASHFORD
3	JERRY WEST	BSA B40	1970	350	WEST WIMBLEDON
4	NICK HOUGHTON	Ducati	1972	350	OAKHAM
5	NICHOLAS HOOPER	Ducati	1964	350	DARTFORD
6	RICHARD SALISBURY	Aermacchi	1970	350	WESTERHAM
7	SHAUN HARVEY	Greeves Oulton	1968	344	ONGAR
8	ANDY REYNOLDS	Seeley AJS		349	BERKHAMSTED
10	HANS-GEORG STUTZ	Norton Manx	1961	350	D-36275 KIRCHHEIM
15	PETER CREW	Higley Evans	1967	350	SANDHURST
16	STEVE TOMES	AJS	1966	350	BELPER
18	MARTIN HUDSON	Seeley 7R	1968	349	ANDOVER
20	PHILIP SHARP	Aermacchi	1967	350	ALBURY
23	BILL DAVIDSON	BSA B40	1971	350	BELVERDERE
24	DAVID HARRISON	Ducati	1972	350	SOLIHULL
28	TONY HIERONS	Aermacchi Melisse	1968	349	LEATHERHEAD
30	DAVID JAMES	Aermacchi	1968	349	PEVENSLEY
36	ADRIAN ARMSON	Cotton Telstar	1964	350	WOODHOUSE
37	NIGEL PALMER	Ducati	1967	350	GEDDINGTON
39	LEN HOMER	Ducati	1968	348	MILTON KEYNES
40	LUKE NOTTON	Dubsa	1972	342	WARBOYS
53	VIC HASKELL	Rickman Gold Star	1968	348	LINCOLN
61	RON KEY	Gold Star	1955	350	WOLVERHAMPTON
71	DOUGLAS SNOW	Ducati	1967	340	GUILDFORD

4a

8/05/99  
 Race 18 8 Laps  
 Boyer Bransden Championship  
 501 cc - Unlimited P1 & P2  
 Lap Distance: 1.0000 Miles  
 Race Distance: 8.0000 Miles

**Boyer Bransden Ignitions**  
*Electrifying Performance*  
 Tel: 01622 730 939

No	Rider	Machine	Year	cc	Town
5a					
5	LEN HUNT	Norton	1963	750	COLCHESTER
7	KEVIN HINTON	Triton	1960	649	ROCHESTER
24	DAVID HARRISON	Triton	1959	650	SOLIHULL
28	STEPHEN BATCHELOR	Triton	1961	650	SANDWICH
29	TIM O'CONNELL	Norton	1985	650	FARNBOROUGH
40	ROBERT PATON	Triton	1953	750	CHELMSFORD
5b					
2	BARRY RODWELL	P&M Trident	1972	940	SUTTON VALENCE
4	AXEL SCHILLING	Laverda	1972	860	76131 KARLSRUHE
10	ADRIAN COOPER	Norton	1971	920	FLITTON
11	MAXIMILIEN JARRY	BMW	1971	1020	45500 GIEN
12	DAVID BARRETT	Ducati	1974	905	CRANFIELD
15	KEITH RICHARDSON	Rickman Norton	1975	840	SPILSBY
16	ROY ROBERTSON	Egli Vincent	1972	1272	WORTHING
18	BARRY GOODING	Capon Vincent	1970	998	DEAL
19	ALAN FOSTER	Norton Metisse	1970	750	WOLVERHAMPTON
20	JEFFREY JONES	Triumph	1970	748	DUNSTABLR
21	JOHN JONES	Seeley Norton	1971	745	DUNSTABLE
27	GORDON RUSSELL	Seeley Weslake	1971	750	NORWICH
31	PAUL HOGAN	BMW	1972	1000	MEOPHAM
33	DANNY BRENNAN	Triumph	1972	750	GUILDFORD
34	NICHOLAS SEARS	Seeley Norton		749	BIGGLESWADE
38	TERENCE MORING	Triumph	1972	830	READING
42	JOHN DOWNS	BMW	1972	998	
77	CLIFF RANSLEY	Dresda	1971	750	HORNSEY



8/05/99  
 Race 19 8 Laps  
 Gold Star Owners Club Race  
 350 cc and 500cc Gold Stars  
 Lap Distance: 1.0000 Miles  
 Race Distance: 8.0000 Miles

No	Rider	Machine	Year	cc	Town
30a					
5	KAY STREETS	Gold Star DB32	1956	350	HALIFAX
6	DAVID STREETS	Gold Star DB32	1956	350	EDENBRIDGE
7	PAUL STEWART	Gold Star CB32	1955	350	LINCOLN
14	TERENCE COVILL	BSA Gold Star	1958	350	NEW BARNET
53	VIC HASKELL	Rickman Gold Star	1968	348	LINCOLN
30b					
2	ANDY MARCHINGTON	Gold Star DBD34	1957	500	WOKINGHAM
3	BRIAN TUTTLEBEE	Gold Star Norton	1954	500	STIBBINGTON
4	GRAHAM PICKSLEY	BSA Gold Star	1956	500	LOUGHBOROUGH
8	ALAN KYSON	Norton Gold Star	1958	500	AYLESBURY
9	DALE WILKINSON	Gold Star	1954	500	WARSOP
11	WAYNE SCHOLTER	Gold Star Manx		500	TOTON
12	GEORGE GOLDIE	Seeley Gold Star	1971	500	KILMARNOCK
15	MIKE HOPE	BSA Gold Star	1958	500	SPALDING
23	PETER SULLIVAN	Norton Gold Star	1956	500	RUGBY
24	MICK MIDDLEMAS	Seeley Gold Star	1957	499	BROUGHTON ASTLEY

8/05/99  
 Race 20 8 Laps  
 Post Classic Championship Race  
 G1 and G2 Post Classic Machines  
 Lap Distance: 1.0000 Miles  
 Race Distance: 8.0000 Miles

No	Rider	Machine	Year	cc	Town
9a					
2	ANDY MARCHINGTON	Suzuki RG500	1981	500	WOKINGHAM
3	ADAM BEXLEY	Yamaha	1980	500	HOOK
4	MICHAEL RUSSELL	Yamaha TZ	1980	359	NORWICH
6	MARK PINCKNEY	Exactweld Yamaha	1981	250	BISHOPS STORTFORD
8	PHIL DAVENPORT	Harris TZ	1981	350	BOURNEMOUTH
9	TERRY SMITH	Maxton Yamaha	1980	350	GRANTHAM
10	ANDREW MAHON	Spondon TZE	1978	347	NUNEATON
15	PETER CREW	Yamaha TZ	1980	350	SANDHURST
20	RICHARD PARKER	Yamaha TZ	1981	350	SWADLINCOTE
50	KEVIN RICHARDS	Yamaha TZ	1981	350	FAVERSHAM
9b					
5	IAN SALTER	Yamaha RD250LC	1981	250	ROMFORD
7	NICK STRATTON	P&M Kawasaki	1980	1075	COLCHESTER
11	MICHAEL COBB	Honda	1974	408	BROADSTAIRS
23	IAN DENNY	Yamaha	1978	400	DIDCOT
25	RAY WARREN	P&M Kawasaki	1976	998	STANFORD LE HOPE
37	PHIL TODD	Laverda	1980	1127	WHYTELEAFE
77	IAN BENTLEY - HOLROYD	P&M Honda	1977	750	SOUTHAM

8/05/99  
 Race 21 8 Laps  
 Honda UK Championship Race  
 Up to 200 cc  
 Lap Distance: 1.0000 Miles  
 Race Distance: 8.0000 Miles



No	Rider	Machine	Year	cc	Town
3b					
2	RICHARD GILHAM	Triumph Cub	1963	200	CRANLEIGH
3	JOHN BOWERS	Honda	1970	198	FAREHAM
4	DANIEL BOWERS	Honda	1970	190	FAREHAM
5	NIGEL BANKS	Honda	1971	197	DOWNHAM MARKET
6	PETER TANNER	Triumph	1963	200	GOMELDON
7	KEITH DAVIS	Bultaco	1963	196	WATFORD
11	ROGER NICHOLS	Honda	1971	125	MITCHAM
12	SIMON SCROGGINS	Triumph	1965	200	MITCHAM
15	DAVID GILBERT	Suzuki	1967	196	HERSHAM
17	CLIFF FIGES	Minarelli	1971	50	SHEPHERDSWELL
18	ANDY BLUEMAN	Honda CR93	1965	198	SOUTHEND ON SEA
20	FRANK WEBB	Tiger Cub	1960	200	FINCHAMSTEAD
21	CHRISTOPHER GREGORY	CR93 Rep	1968	198	WESTCLIFF ON SEA
22	JOHN LEE	Triumph Tiger Cub	1965	199	NR RUGBY
23	IAN DENNY	Minarelli	1970	49	DIDCOT
24	CHRISTIAN GREGORY	CR93 Rep	1965	198	WESTCLIFF ON SEA
25	GARETH CREW	Honda	1972	200	SANDHURST
30	STEVE BEDFORD	Minarelli	1972	50	PETERBOROUGH
50	HANS BREGT	Jamathi		50	ROTTERDAM
58	MARK CARKEEK	Bantam	1965	125	KETTERING



8/05/99  
 Race 22 8 Laps  
 Summerfield Eng. Championship Race  
 350 & 500 cc Group 1 P1 & P2  
 Lap Distance: 1.0000 Miles  
 Race Distance: 8.0000 Miles

**SUMMERFIELD  
 ENGINEERING  
 LIMITED**

No	Rider	Machine	Year	cc	Town
7a					
1	JERRY SUMMERFIELD	Petty Norton	1961	500	WIRKEWORTH
2	ROBERT ROWE	Manx Norton	1960	499	ASHFORD
3	PHIL BEATON	G50 Melisse	1963	500	LITTLEHAMPTON
4	NICK HOUGHTON	Seeley Nourish	1972	500	OAKHAM
5	MICK MORETON	Seeley G50	1970	496	STOURPOER ON SEVERN
6	BRIAN PENFOLD	Manx Norton	1958	499	TUNBRIDGE WELLS
7	ERIC QUARTIER	G50 Seeley	1967	496	
8	VERNON GLASHIER	Rutter Matchless	1972	496	DUNMOW
9	TIM JACKSON	Norton	1958	500	NORTON LINDSEY
10	HANS-GEORG STUTZ	Petty Manx	1970	500	D-36275 KIRCHHEIM
11	TONY SMITH	Matchless	1962	500	READING
12	GEORGE GOLDIE	Seeley G50		500	KILMARNOCK
14	DESMOND WOOTON	Manx Norton	1958	500	DAVENTRY
16	STEVE TOMES	Norton Manx		500	BELPER
18	MARTIN HUDSON	Seeley G50	1968	496	ANDOVER
19	BRUCE CARTER	Allen Manx	1961	499	TADLEY
22	PAUL MORGAN	Seeley Matchlessw MkII	1968	498	ICKFORD
23	YVES BIRAUD	Seeley G50		500	94140 ALFORTVILLE
24	ANDREW EITE	Manx	1961	499	BOLTON
28	TONY HIERONS	Seeley G50	1970	496	LEATHERHEAD
33	ANDY PIKE	Seeley G50	1970	500	LOUGHBOROUGH
71	DOUGLAS SNOW	Seeley	1972	496	GUILDFORD
7b					
20	PHILIP SHARP	Aermacchi	1967	350	ALBURY

08/05/99  
 Race 23 Laps:8  
 Arai Helmets Championship Race  
 201-250cc Single cylinder  
 Course length: 1.000 Miles  
 Race Distance: 8 Miles



No	Rider	Machine	Year	cc	Town
3a					
2	RICHARD BOOL	Ducati	1964	248	DATCHET
3	ROBIN READ	BSA	1970	250	STONDON
4	CHARLES WATSON	Ducati	1968	250	AYLESFORD
5	JAMES TOLEMAN	Ducati Monza	1968	250	TWICKENHAM
6	ROY RANDALL	Ducati	1964	250	WEST WICKHAM
7	ROBERT DAVIES	Ducati	1964	250	MALDON
8	WIL SMITH	Ducati	1967	250	SWAFFHAM
9	ROBIN SCUDDER	Ducati	1968	250	READING
10	ROY GILLARD	Ducati	1972	248	SAFFRON WALDEN
11	TERRY CONNER	Ducati	1969	250	GOSPEL OAK
12	JOHN BRADLEY	Montesa	1967	250	YORK
14	CHRIS WALLACE	Ducati	1972	250	BUNTINGFORD
15	KEITH RICHARDSON	Montesa	1968	248	SPILSBY
16	DANIEL SHARMAN	Ducati	1972	250	GILLINGHAM
17	PETER ASTON	Greeves	1966	250	WITHERLEY
18	DEREK JORDAN	Colton	1965	247	LEICESTER
19	COLIN SPARROW	Greeves	1966	259	CHESHUNT
20	STEVE CROOK	Ducati	1965	250	CAMBRIDGE
21	MERVYN STRATFORD	Greeves	1966	247	NR AYLESBURY
22	BRIAN FOSTER	Colton	1964	250	HERTFORD
24	MARTIN HANLON	Colton	1964	247	CHESHAM
25	BRIAN MIDGLEY	Triumph	1971	250	NR BARNSELY
26	ALAN SMALLBONES	Ducati	1966	250	LINCOLN
27	NEIL ROGERS	Ducati Mach 1		250	BORDON
28	TONY HIERONS	Saxon Ducati	1966	250	LEATHERHEAD
29	STEPHEN BATH	Ducati	1969	250	ST LEONARDS ON SEA
30	DAVID JAMES	Aermacchi	1963	248	PEVENSLEY
37	NIGEL PALMER	Ducati	1960	250	GEDDINGTON
50	JOHN HYNES	Ducati	1967	250	NR WINCHESTER
74	THOMAS SNOW	DMW	1967	247	GUILDFORD

8/05/99  
 Race 24 8 Laps  
 Atlantic Motorcycles Championship Race  
 Sidecars - P1 & P2  
 Lap Distance: 1.0000 Miles  
 Race Distance: 8.0000 Miles

## ATLANTIC MOTORCYCLES CHAMPIONSHIP

No	Driver and Passenger	Machine	Year	cc	Home Town
2b					
2	IAN Mc GHEE / GORDON LUNDBERG	Weslake	1972	900	HITCHIN
6	JEAN-PIERRE CAPEL / DAMIEN VAN PEE	Windle Nourish	1972	900	BELTIUM
7	MICHEL LEDERMANN / BERNADETTE LEDERMANN	Windle Triumph	1972	830	1150 BEUXELLES
9	SEAN REEVES / SARAH EVANS	Saab	1965	750	ASHFORD
11	ANDY EVANS / KEVIN SCOTT	Windle Trident	1971	860	BEXLEY
12	JOHN ANSON / DAVID WELLS	Imp	1971	998	BEWDLEY
20	JOHN SMITH / DANIEL RUDKIN	Triumph Weslake	1972	750	SWAFFHAM
21	KEITH LATHERON / DAVID LATHERON	Imp	1970	998	LEIGH
35	RAYMOND REEVES / JOHN MARSHALL	Windle Weslake	1972	880	ASHFORD
2c					
3	ALAN CAVEY / JIM LAIDER	Fiddaman Triumph	1963	670	HAWKHURST
5	RICHARD HOLMES / MARTIN CASBON	BSA	1970	750	WOODFORD GREEN
14	ROGER FARRINGTON / MICHAEL FARRINGTON	Norton	1972	830	WATFORD VILLAGE
15	BILL MC LAREN / PAUL KING	Yamaha	1972	840	CARSHALTON
16	NICHOLAS LUCOCK / SIMON DACTLER	BSA	1970	750	NR SANDY
17	ROD DAWE / BRIAN ROBSON	Lynx Yamaha	1972	880	DUSTON
18	VINCENT WORTHINGTON / LINDA MCSHANE	Yamaha	1972	880	ERITH
19	MATHYS KERSTEN / Anja Vereyken	Triumph	1966	650	
71	JAN HERBERT / ALAN BEDFORD	Windle Imp	1970	998	CHELMSFORD

# ATLANTIC MOTORCYCLES

*Sponsors  
 of the  
 Sidecar  
 Championship*

Period I and Period II Sidecars are catered for within the Atlantic Sidecar Championship. **Computer Training Services** will donate the end of year championship trophies for the Period I competitors.

9/05/99  
 Race A 0 Laps  
 Parade of Classic Solo Motorcycles  
 Lap Distance: 1.0000 Miles  
 Race Distance: 0.0000 Miles

**Associated Beverage  
 Services Limited**

The Right Solution  
 Pleased to be Associated with the CRMC

No	Rider	Machine	Year	cc	Town
2	ROSS DYSON	Ducati	1966	250	BOGNOR REGIS
3	DEREK RANDALL	Trilon	1972	750	CROYDON
4	PHILLIP DYSON	Manx Norton	1956	350	BOGNOR REGIS
5	TONY BASTICK	Manx Norton	1955	500	ORPINGTON
6	RICHARD A JEFFREY	Ducati	1964	200	TONBRIDGE
7	DAVID HARTLEY	Velocette	1962	499	HUNTINGDON
11	DEREK MINTER	Norton	1962	500	WHITSTABLE
12	JOHN DALY	Ducati	1970	350	LUTON
16	MATHEW WALMSLEY	Norton 88		497	BLACKBURN
17	DAVE FROST	Greeves RAS	1963	200	BENFLEET
18	VIC SELL	AJS	1959	350	LOUGHTON
19	MEL BOUSTEAD	Tricati	1972	500	PETERBOROUGH
23	MICHAEL NORRIS	Honda K4	1969	250	NR GUILDFORD
26	PETER HAYLOCK	Triumph	1970	750	ROMFORD
27	ERIC DOWNEY	Matchless G50	1962	498	CAMBRIDGE
31	EDOUARD CHAUDRON	BMW	1974	978	BELGIUM
34	LARRY BARNES	Ducati	1972	249	HARWICH
64	ALAN WOOLLEY	Trilon	1961	650	WOLVERHAMPTON
72	JOHN SNOW	Aermacchi	1967	344	GUILDFORD
74	SUSAN SNOW	DMW	1967	247	GUILDFORD
99	JOHN BAKER	Trilon GP	1962	500	ROCKLAND ST MARY

9/05/99  
 Race 1 8 Laps  
 Carole Nash Championship Race  
 F750 and Group 3 Production  
 Lap Distance: 1.0000 Miles  
 Race Distance: 8.0000 Miles



**CAROLE NASH**  
 INSURANCE CONSULTANTS LTD

No	Rider	Machine	Year	cc	Town
3	PHILIP INGLE	Triumph	1972	750	ABBOTSLEY
6	JEAN-PIERRE CAPEL	Seeley Norton	1972	750	BELTIUM
8	PHIL DAVENPORT	RPS Triumph	1972	750	BOURNEMOUTH
9	GERALD FAYUAIS	Moto Guzzi	1971	750	H5500 GIEN
14	YANN DUFOUR	Triumph Westlake		750	ROUEN
18	BARRY GOODING	Miles Trident	1971	750	DEAL
22	PAUL MORGAN	P&M Trident	1972	748	ICKFORD
25	RAY WARREN	Miles Trident	1972	750	STANFORD LE HOPE
26	SIMON WALSH	Haylock Triumph	1970	750	GRANTHAM
30	ROUDENKO DIMITRI	Norton Seeley	1971	750	
32	TIM ANTILL	Triumph	1972	741	NR MANSFIELD
33	DANNY BRENNAN	Triumph	1972	750	GUILDFORD
35	DANIEL IMBERG	Rosner Triumph	1972	750	FLITWICK
38	TERENCE MORING	Triumph	1972	750	READING
41	DAVID TURNER	Triumph Trident	1972	750	GUILDFORD
90	ALAN WALSH	Triumph	1972	750	GRANTHAM
8b					
17	BRIAN WACKETT	Triumph	1972	743	WALTHAM ABBEY
36	DAVID JOHN MEAD	Triumph T150T	1968	741	RUGELY
39	BRENDAN RYAN	Triumph	1971	750	HESTON

9/05/99  
 Race 2 8 Laps  
 Honda UK Championship Race  
 250cc & 350 cc Twins  
 Lap Distance: 1.0000 Miles  
 Race Distance: 8.0000 Miles



No	Rider	Machine	Year	cc	Town
4b					
1	KARL HAYES	Suzuki	1967	247	CLAY CROSS
4	KEITH BROWN	Suzuki	1967	246	FARNDON
9	IAIN GREEN	Invicta Arrow	1960	247	ORPINGTON
16	RICHARD BOSHIER	Honda	1962	247	HIGH WYCOMBE
23	KEN RATCLIFFE	Suzuki T20	1967	250	WALTON-ON-THAMES
28	STEVE CLARK	Suzuki	1967	250	CLAY CROSS
30	DANNY PULLEN	Suzuki	1967	250	ADDLESTONE
33	ADAM PIKE	Suzuki T20	1966	247	SINFIN
59	ROBERT EDWARDS	Ariel Arrow	1960	247	LUTON
77	DIXE DEAN	Yamaha	1967	250	THETFORD
6a					
2	MARK DAYNES.	Honda	1971	350	THEMELTHORPE
3	LEN COOPER	Honda	1972	350	CROWTHORPE
5	GEOFF TAYLOR	Honda K4	1972	350	MERIDEN
6	PETER WILKINS	Honda K4	1971	350	READING
7	GRAHAM ORRIN	Honda	1971	350	OLNEY
8	BOB SLEIGHTHOLME	Honda K4	1971	350	YORK
10	JOHN BOTTING	Honda K4	1972	350	BETCHWORTH
11	SIMON FISHER	Honda	1971	350	NR OLNEY
12	RODNEY BOTTING	Honda K4	1972	350	BETCHWORTH
14	ANTHONY AMBLER	Honda CL	1972	350	BRAMPTON
15	IAN AMBLER	Honda	1972	350	BRAMPTON
17	GORDON POWELL	Honda K4	1971	347	BEDWAS
19	PAUL METCALFE	Honda K4	1972	350	SOUTHWELL
20	MARTIN HILL	Honda K4	1971	350	HOCKLEY
21	GEOFF BROWN	Honda	1974	348	SHEFFIELD
22	STEVEN FOSTER	Honda K4	1972	350	THORNLEY
24	CHRISTOPHER AMBLER	Honda K4	1970	350	BRAMPTON
26	PETE CURZONS	Honda K4	1972	346	DORDON
37	PETER BACON	Honda K4	1971	346	KIDLINGTON

9/05/99  
 Race 3 8 Laps  
 500 cc Group 2 - P1 & P2 Championship Race  
 Lap Distance: 1.0000 Miles  
 Race Distance: 8.0000 Miles

No	Rider	Machine	Year	cc	Town
6b					
2	STEVE CATTON	Norton Dominator	1959	500	AYLESBURY
3	TIM HEALY	Norton 88	1962	500	NR SALISBURY
4	BRIAN WHITE	Dresda	1969	490	SLINFOLD
5	LEIGH CLARK	Triumph	1971	490	HARROW
6	CHRIS BARFE	Honda	1971	500	BERGH APTON
7	PAUL POTTER	BSA	1971	500	BETCHWORTH
8	STEPHEN POTTER	Norton	1960	500	ASHFORD
9	NIGEL HEATH	Velocette	1958	499	BANBURY
10	NICK BEDFORD	BSA Gold Star	1960	499	BALSHAM
11	KEITH SOALL	Honda	1966	500	COLCHESTER
12	KIM HICKS	BSA	1971	499	GRAVESEND
14	DON ORCHARD	Triumph	1973	500	ARUNDEL
15	BARRY DURKIN	Norton	1961	500	WOLVERHAMPTON
16	IAN BAINBRIDGE	BSA	1972	500	BARNARD CASTLE
17	ADAM WILSON	Honda	1971	500	LONDON
18	MARK CAMPION	Seeley Triumph	1972	492	LANCASTER
19	BRIAN WILLIMONT	Triumph	1967	500	ROMFORD
28	KEITH JAGGARD	Triumph	1969	490	RUGBY
32	JOHN ALLEN	Dresda	1970	492	TWICKENHAM
64	NIC POWELL	Triumph	1968	490	RUGBY
77	CLIFF RANSLY	Velo VM	1966	500	HORNSEY

**THE FRIENDLIEST CLUB IN  
 RACING ! JOIN US NOW!**

Membership details are available from:  
**PETER HAYLOCK, CRMC Membership Secretary**  
 P.O. Box 3030 Harold Hill, Essex RM3 9BW  
 Or visit our web site [www.crmc.co.uk](http://www.crmc.co.uk)

9/05/99  
 Race 4 8 Laps  
 R & E Presswork Championship Race  
 251 - 350 cc Single Cylinders  
 Lap Distance: 1.0000 Miles  
 Race Distance: 8.0000 Miles

No	Rider	Machine	Year	cc	Town
1a					
1	JERRY SUMMERFIELD	Petty Manx	1970	349	WIRKEWORTH
2	ROBERT ROWE	Manx Norton	1960	349	ASHFORD
4	NICK HOUGHTON	Ducati	1972	350	OAKHAM
5	NICHOLAS HOOPER	Ducati	1964	350	DARTFORD
7	SHAUN HARVEY	Greeves Oulton	1968	344	ONGAR
8	ANDY REYNOLDS	Seeley AJS		349	BERKHAMSTED
10	HANS-GEORG STUTZ	Norton Manx	1961	350	D-36275 KIRCHHEIM
15	PETER CREW	Higley Evans	1967	350	SANDHURST
16	STEVE TOMES	AJS	1966	350	BELPER
17	BOB WARREN	AJS	1961	349	NR WROTHAM
18	MARTIN HUDSON	Seeley 7R	1968	349	ANDOVER
20	PHILIP SHARP	Aermacchi	1967	350	ALBURY
23	BILL DAVIDSON	BSA B40	1971	350	BELVERDERE
24	DAVID HARRISON	Ducati	1972	350	SOLIHULL
28	TONY HIERONS	Aermacchi Metisse	1963	349	LEATHERHEAD
30	DAVID JAMES	Aermacchi	1968	349	PEVENSLEY
33	ANDY PIKE	Aermacchi	1970	350	LOUGHBOROUGH
36	ADRIAN ARMSON	Cotton Telstar	1964	350	WOODHOUSE
37	NIGEL PALMER	Ducati	1967	350	GEDDINGTON
39	LEN HOMER	Ducati	1968	348	MILTON KEYNES
40	LUKE NOTTON	Dubsa	1972	342	WARBOYS
53	VIC HASKELL	Rickman Gold Star	1968	348	LINCOLN
61	RON KEY	Gold Star	1955	350	WOLVERHAMPTON
71	DOUGLAS SNOW	Ducati	1967	340	GUILDFORD

## THE FRIENDLIEST CLUB IN RACING ! JOIN US NOW!

Membership details are available from:  
**PETER HAYLOCK, CRMC Membership Secretary**  
 P.O. Box 3030 Harold Hill, Essex RM3 9BW  
 Or visit our web site [www.crmc.co.uk](http://www.crmc.co.uk)



# RACING IGNITION SYSTEMS



## TRIGGER RACE WINS

- \* CRANK TRIGGERED RACING IGNITION SYSTEMS
- \* POWER BOXES FOR BATTERYLESS IGNITION
- \* TOTAL LOSS AND ALTERNATOR DRIVEN SYSTEMS
- \* MICRO DIGITAL MAPPED IGNITION
- \* UNIQUE PROGRAMMING TO CUSTOMERS REQUIREMENTS
- \* SPECIALISED MINIATURE RACING COILS
- \* PROGRAMMED REV LIMITER AVAILABLE
- \* AGENTS FOR DENSO SPARK PLUGS

**TO DISCUSS YOUR REQUIREMENTS OR PROJECT CALL 01622 730939**



**Boyer Bransden Ignitions**  
*Electrifying Performance*

Boyer-Bransden Electronics Ltd, Dept (OM), Frindsbury House,  
 Cox Lane, Delling, Maidstone, Kent ME14 3HE. Fax 01622 730930

9/05/99  
 Race 5 8 Laps  
 Boyer Bransden Championship  
 501 cc - Unlimited P1 & P2  
 Lap Distance: 1.0000 Miles  
 Race Distance: 8.0000 Miles

**Boyer Bransden Ignitions**  
*Electrifying Performance*  
 Tel: 01622 730 939

No	Rider	Machine	Year	cc	Town
5a					
5	LEN HUNT	Norton	1963	750	COLCHESTER
7	KEVIN HINTON	Triton	1960	649	ROCHESTER
24	DAVID HARRISON	Triton	1959	650	SOLIHULL
28	STEPHEN BATCHELOR	Triton	1961	650	SANDWICH
29	TIM O'CONNELL	Norton	1985	650	FARNBOROUGH
37	GEOFF ROGERS	Norton	1961	750	FRAMLINGHAM
40	ROBERT PATON	Triton	1953	750	CHELMSFORD
5b					
4	AXEL SCHILLING	Laverda	1972	860	76131 KARLSRUHE
10	ADRIAN COOPER	Norton	1971	920	FLITTON
11	MAXIMILIEN JARRY	BMW	1971	1020	45500 GIEN
12	DAVID BARRETT	Ducati	1974	905	CRANFIELD
15	KEITH RICHARDSON	Rickman Norton	1975	840	SPLSBY
18	BARRY GOODING	Capon Vincent	1970	998	DEAL
19	ALAN FOSTER	Norton Melisse	1970	750	WOLVERHAMPTON
20	JEFFREY JONES	Triumph	1970	748	DUNSTABLR
21	JOHN JONES	Seeley Norton	1971	745	DUNSTABLE
27	GORDON RUSSELL	Seeley Weslake	1971	750	NORWICH
31	PAUL HOGAN	BMW	1972	1000	MEOPHAM
33	DANNY BRENNAN	Triumph	1972	750	GUILDFORD
38	TERENCE MORING	Triumph	1972	830	READING
42	JOHN DOWNS	BMW	1972	998	
53	BILL CANNON	Egli Vincent	1969	998	LEIGH - ON - SEA
77	CLIFF RANSLEY	Dresda	1971	750	HORNSEY

9/05/99  
 Race 6 8 Laps  
 Atlantic Motorcycles Championship  
 Sidecars - P1 & P2  
 Lap Distance: 1.0000 Miles  
 Race Distance: 8.0000 Miles

**ATLANTIC  
 MOTORCYCLES  
 CHAMPIONSHIP**

No	Driver and Passenger	Machine	Year	cc	Home Town
2a					
4	DAVID RAMSDEN / YVONNE OADES	BMW	1972	750	CLECKHEATON
8	KEITH MILLAR / TERRY KELLY	BMW	1972	750	CRAWLEY
10	ROD CLAPHAM / PAUL COATES	BMW	1970	1000	LEEDS
22	DENNIS ETHERIDGE / CHRISTINE ETHERIDGE	Norton	1967	750	MAIDSTONE
23	JEAN-CLAUDE LUIJCX / KRIS ??	Norton		500	HOLLAND
24	PAUL THOMAS / NANCY THOMAS	Triton	1960	650	COLCHESTER
76	LARRY LEWIS / KATY LEWIS	Triumph	1952	650	TUNBRIDGE WELLS
99	ADRIAN DEDMAN / THERESA LANGFORD	Norton	1958	745	ELY
2b					
2	IAN Mc GHEE / GORDON LUNDBERG	Weslake	1972	900	HITCHIN
6	JEAN-PIERRE CAPEL / DAMIEN VAN PEE	Windle Nourish	1972	900	BELTIUM
7	MICHEL LEDERMANN / BERNADETTE LEDERMANN	Windle Triumph	1972	830	1150 BEUXELLES
9	SEAN REEVES / SARAH EVANS	Saab	1965	750	ASHFORD
11	ANDY EVANS / KEVIN SCOTT	Windle Trident	1971	860	BEXLEY
12	JOHN ANSON / DAVID WELLS	Imp	1971	998	BEWDLEY
20	JOHN SMITH / DANIEL RUDKIN	Triumph Weslake	1972	750	SWAFFHAM
21	KEITH LATHERON / DAVID LATHERON	Imp	1970	998	LEIGH
25	ANDREW REEVES / WAYNE HEMMINGS	Imp	1969	928	TIPTREE
35	RAYMOND REEVES / JOHN MARSHALL	Windle Weslake	1972	880	ASHFORD

Period I and Period II Sidecars are catered for within the Atlantic Sidecar Championship. **Computer Training Services** will donate the end of year championship trophies for the Period I competitors.

9/05/99  
 Race 7 8 Laps  
 Gold Star Owners Club Race  
 350 cc and 500cc Gold Stars  
 Lap Distance: 1.0000 Miles  
 Race Distance: 8.0000 Miles

No	Rider	Machine	Year	cc	Town
30a					
5	KAY STREETS	Gold Star DB32	1956	350	HALIFAX
6	DAVID STREETS	Gold Star DB32	1956	350	EDENBRIDGE
7	PAUL STEWART	Gold Star CB32	1955	350	LINCOLN
14	TERENCE COVILL	BSA Gold Star	1958	350	NEW BARNET
53	VIC HASKELL	Rickman Gold Star	1968	348	LINCOLN
30b					
2	ANDY MARCHINGTON	Gold Star DBD34	1957	500	WOKINGHAM
3	BRIAN TUTTLEBEE	Gold Star Norton	1954	500	STIBBINGTON
4	GRAHAM PICKSLEY	BSA Gold Star	1956	500	LOUGHBOROUGH
8	ALAN KYSON	Norton Gold Star	1958	500	AYLESBURY
9	DALE WILKINSON	Gold Star	1954	500	WARSOP
10	NICK BEDFORD	BSA Gold Star	1960	499	BALSHAM
11	WAYNE SCHOLTER	Gold Star Manx		500	TOTON
12	GEORGE GOLDIE	Seeley Gold Star	1971	500	KILMARNOCK
15	MIKE HOPE	BSA Gold Star	1958	500	SPALDING
23	PETER SULLIVAN	Norton Gold Star	1956	500	RUGBY
24	MICK MIDDLEMAS	Seeley Gold Star	1957	499	BROUGHTON ASTLEY

9/05/99  
 Race 8 8 Laps  
 Post Classic Championship Race  
 G1 and G2 Post Classic Machines  
 Lap Distance: 1.0000 Miles  
 Race Distance: 8.0000 Miles

No	Rider	Machine	Year	cc	Town
9a					
2	ANDY MARCHINGTON	Suzuki RG500	1981	500	WOKINGHAM
3	ADAM BEXLEY	Yamaha	1980	500	HOOK
4	MICHAEL RUSSELL	Yamaha TZ	1980	359	NORWICH
6	MARK PINCKNEY	Exactweld Yamaha	1981	250	BISHOPS STORTFORD
8	PHIL DAVENPORT	Harris TZ	1981	350	BOURNEMOUTH
9	TERRY SMITH	Maxton Yamaha	1980	350	GRANTHAM
10	ANDREW MAHON	Spondon TZE	1978	347	NUNEATON
15	PETER CREW	Yamaha TZ	1980	350	SANDHURST
20	RICHARD PARKER	Yamaha TZ	1981	350	SWADLINCOTE
50	KEVIN RICHARDS	Yamaha TZ	1981	350	FAVERSHAM
9b					
5	IAN SALTER	Yamaha RD250LC	1981	250	ROMFORD
7	NICK STRATTON	P&M Kawasaki	1980	1075	COLCHESTER
11	MICHAEL COBB	Honda	1974	408	BROADSTAIRS
23	IAN DENNY	Yamaha	1978	400	DIDCOT
25	RAY WARREN	P&M Kawasaki	1976	998	STANFORD LE HOPE
37	PHIL TODD	Laverda	1980	1127	WHYTELEAFE
77	IAN BENTLEY - HOLROYD	P&M Honda	1977	750	SOUTHAM

### MARSHALS OVERALLS

The CRMC are indebted to all those who have helped us to provide the overalls for use by our marshals. If you think you or your business could sponsor the provision of a pair of overalls for the modest sum of £25 please contact our marshals Co-ordinator Jackie Peat on 01842 879 311 or fax 01842 879 312

9/05/99  
 Race 9 8 Laps  
 Honda UK Championship Race  
 Up to 200 cc  
 Lap Distance: 1.0000 Miles  
 Race Distance: 8.0000 Miles



No	Rider	Machine	Year	cc	Town
3b					
2	RICHARD GILHAM	Triumph Cub	1963	200	CRANLEIGH
3	JOHN BOWERS	Honda	1970	198	FAREHAM
4	DANIEL BOWERS	Honda	1970	190	FAREHAM
5	NIGEL BANKS	Honda	1971	197	DOWNHAM MARKET
6	PETER TANNER	Triumph	1963	200	GOMELDON
11	ROGER NICHOLS	Honda	1971	125	MITCHAM
12	SIMON SCROGGINS	Triumph	1965	200	MITCHAM
15	DAVID GILBERT	Suzuki	1967	196	HERSHAM
17	CLIFF FIGES	Minarelli	1971	50	SHEPHERDSWELL
18	ANDY BLUEMAN	Honda CR93	1965	198	SOUTHEND ON SEA
20	FRANK WEBB	Tiger Cub	1960	200	FINCHAMSTEAD
21	CHRISTOPHER GREGORY	CR93 Rep	1968	198	WESTCLIFF ON SEA
22	JOHN LEE	Triumph Tiger Cub	1965	199	NR RUGBY
23	IAN DENNY	Minarelli	1970	49	DIDCOT
24	CHRISTIAN GREGORY	CR93 Rep	1965	198	WESTCLIFF ON SEA
25	GARETH CREW	Honda	1972	200	SANDHURST
30	STEVE BEDFORD	Minarelli	1972	50	PETERBOROUGH
58	MARK CARKEEK	Banlam	1965	125	KETTERING

9/05/99  
 Race 10 8 Laps  
 Summerfield Eng. Championship Race  
 350 & 500 cc Group 1 P1 & P2  
 Lap Distance: 1.0000 Miles  
 Race Distance: 8.0000 Miles



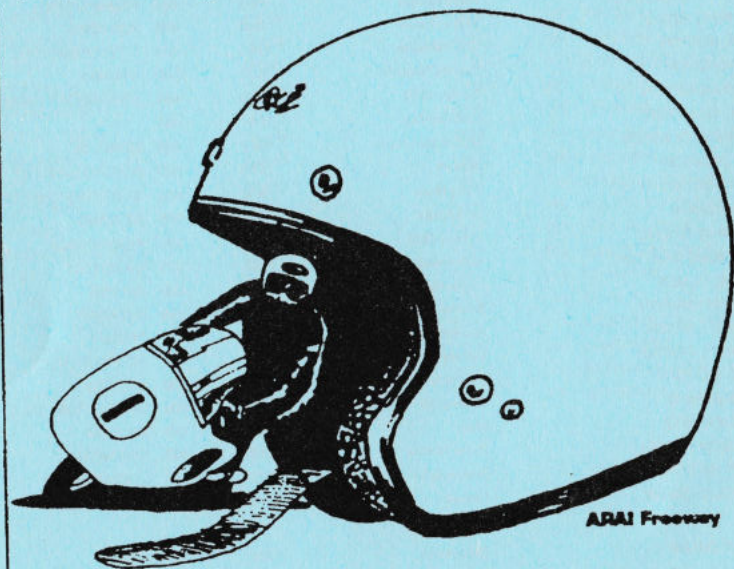
No	Rider	Machine	Year	cc	Town
7a					
1	JERRY SUMMERFIELD	Petty Norton	1961	500	WIRKEWORTH
2	ROBERT ROWE	Manx Norton	1960	499	ASHFORD
3	PHIL BEATON	G50 Metisse	1963	500	LITTLEHAMPTON
4	NICK HOUGHTON	Seeley Nourish	1972	500	OAKHAM
5	MICK MORETON	Seeley G50	1970	496	STOURPOER ON SEVERN
7	ERIC QUARTIER	G50 Seeley	1967	496	
8	VERNON GLASHIER	Rutter Matchless	1972	496	DUNMOW
9	TIM JACKSON	Norton	1958	500	NORTON LINDSEY
10	HANS-GEORG STUTZ	Petty Manx	1970	500	D-36275 KIRCHHEIM
11	TONY SMITH	Matchless	1962	500	READING
12	GEORGE GOLDIE	Seeley G50		500	KILMARNOCK
14	DESMOND WOOTON	Manx Norton	1958	500	DAVENTRY
16	STEVE TOMES	Norton Manx		500	BELPER
18	MARTIN HUDSON	Seeley G50	1968	496	ANDOVER
19	BRUCE CARTER	Allen Manx	1961	499	TADLEY
21	MICHAEL CARTER	Seeley G50	1970	500	SOUTH CHAILEY
22	PAUL MORGAN	Seeley Matchlessw MkII	1968	498	ICKFORD
23	YVES BIRAUD	Seeley G50		500	94140 ALFORTVILLE
24	ANDREW EITE	Manx	1961	499	BOLTON
27	GORDON RUSSELL	Manx Norton	1958	500	NORWICH
28	TONY HIERONS	Seeley G50	1970	496	LEATHERHEAD
71	DOUGLAS SNOW	Seeley	1972	496	GUILDFORD
7b					
20	PHILIP SHARP	Aermacchi	1967	350	ALBURY





*there is a difference*

**ARAI safety helmets,**



**even for your Classic.**

**ARAI Helmet (Europe) B.V.  
P.O.Box 112, 3870 CC Hoevelaken, The Netherlands**

9/05/99  
Race 11 8 Laps  
Arai Helmet Championship Race  
250 cc Single Cylinder  
Lap Distance: 1.0000 Miles  
Race Distance: 8.0000 Miles



No	Rider	Machine	Year	cc	Town
3a					
2	RICHARD BOOL	Ducati	1964	248	DATCHET
3	ROBIN READ	BSA	1970	250	STONDON
4	CHARLES WATSON	Ducati	1968	250	AYLESFORD
5	JAMES TOLEMAN	Ducati Monza	1968	250	TWICKENHAM
6	ROY RANDALL	Ducati	1964	250	WEST WICKHAM
7	ROBERT DAVIES	Ducati	1964	250	MALDON
8	WIL SMITH	Ducati	1967	250	SWAFFHAM
9	ROBIN SCUDDER	Ducati	1968	250	READING
10	ROY GILLARD	Ducati	1972	248	SAFFRON WALDEN
11	TERRY CONNER	Ducati	1969	250	GOSPEL OAK
14	CHRIS WALLACE	Ducati	1972	250	BUNTINGFORD
15	KEITH RICHARDSON	Montesa	1968	248	SPILSBY
16	DANIEL SHARMAN	Ducati	1972	250	GILLINGHAM
17	PETER ASTON	Greeves	1966	250	WITHERLEY
18	DEREK JORDAN	Cotton	1965	247	LEICESTER
19	COLIN SPARROW	Greeves	1966	259	CHESHUNT
20	STEVE CROOK	Ducati	1966	250	CAMBRIDGE
21	MERVYN STRATFORD	Greeves	1966	247	NR AYLESBURY
22	BRIAN FOSTER	Cotton	1964	250	HERTFORD
25	BRIAN MIDGLEY	Triumph	1971	250	NR BARNSELY
26	ALAN SMALLBONES	Ducati	1966	250	LINCOLN
28	TONY HIERONS	Saxon Ducati	1966	250	LEATHERHEAD
29	STEPHEN BATH	Ducati	1969	250	ST LEONARDS ON SEA
30	DAVID JAMES	Aermacchi	1963	248	PEVENSLEY
37	NIGEL PALMER	Ducati	1990	250	GEDDINGTON
50	JOHN HYNES	Ducati	1967	250	NR WINCHESTER
74	THOMAS SNOW	DMW	1967	247	GUILDFORD



**THE BEST OF BRITISH**

A Classic Racing Motorcycle Club Promotion

9/05/99  
 Race B 0 Laps  
 Parade of Classic Solo Motorcycles  
 Lap Distance: 1.0000 Miles  
 Race Distance: 0.0000 Miles

**Associated Beverage  
 Services Limited**  
 The Right Solution  
 Pleased to be Associated with the CRMC

No	Rider	Machine	Year	cc	Town
1					
2	ROSS DYSON	Ducati	1966	250	BOGNOR REGIS
3	DEREK RANDALL	Trilon	1972	750	CROYDON
4	PHILLIP DYSON	Manx Norton	1956	350	BOGNOR REGIS
5	TONY BASTICK	Manx Norton	1955	500	ORPINGTON
6	RICHARD A JEFFREY	Ducati	1964	200	TONBRIDGE
7	DAVID HARTLEY	Velocette	1962	499	HUNTINGDON
11	DEREK MINTER	Norton	1962	500	WHITSTABLE
12	JOHN DALY	Ducati	1970	350	LUTON
16	MATHEW WALMSLEY	Norton 88		497	BLACKBURN
17	DAVE FROST	Greeves RAS	1963	200	BENFLEET
18	VIC SELL	AJS	1959	350	LOUGHTON
19	MEL BOUSTEAD	Ducati	1972	350	PETERBOROUGH
22	MICHAEL WAUGH	Laverda	1979	552	GRINSBY
23	MICHAEL NORRIS	Honda K4	1969	250	NR GUILDFORD
26	PETER HAYLOCK	Triumph	1970	750	ROMFORD
27	ERIC DOWNEY	Matchless G50	1962	498	CAMBRIDGE
31	EDOUARD CHAUDRON	BMW	1974	978	BELGIUM
34	LARRY BARNES	Ducati	1972	249	HARWICH
64	ALAN WOOLLEY	Trilon	1961	650	WOLVERHAMPTON
72	JOHN SNOW	Aermacchi	1967	344	GUILDFORD
74	SUSAN SNOW	DMW	1967	247	GUILDFORD
99	JOHN BAKER	Trilon GP	1962	500	ROCKLAND ST MARY



9/05/99  
 Race 12 8 Laps  
 Carole Nash Championship Race  
 F750 and Group 3 Production  
 Lap Distance: 1.0000 Miles  
 Race Distance: 8.0000 Miles



No	Rider	Machine	Year	cc	Town
3	PHILIP INGLE	Triumph	1972	750	ABBOTSLEY
6	JEAN-PIERRE CAPEL	Seeley Norton	1972	750	BELTIUM
8	PHIL DAVENPORT	RPS Triumph	1972	750	BOURNEMOUTH
9	GERALD FAYUAIS	Moto Guzzi	1971	750	H5500 GIEN
14	YANN DUFOUR	Triumph Weslake		750	ROUEN
18	BARRY GOODING	Miles Trident	1971	750	DEAL
22	PAUL MORGAN	P&M Trident	1972	748	ICKFORD
25	RAY WARREN	Miles Trident	1972	750	STANFORD LE HOPE
26	SIMON WALSH	Haylock Triumph	1970	750	GRANTHAM
30	ROUDENKO DIMITRI	Norton Seeley	1971	750	
32	TIM ANTILL	Triumph	1972	741	NR MANSFIELD
35	DANIEL IMBERG	Rosner Triumph	1972	750	FLITWICK
38	TERENCE MORING	Triumph	1972	750	READING
41	DAVID TURNER	Triumph Trident	1972	750	GUILDFORD
90	ALAN WALSH	Triumph	1972	750	GRANTHAM
17	BRIAN WACKETT	Triumph	1972	743	WALTHAM ABBEY
36	DAVID JOHN MEAD	Triumph T150T	1968	741	RUGELY
39	BRENDAN RYAN	Triumph	1971	750	HESTON

**MARSHALS:**

If you would like to be part of the action and spectacle of top flight Classic Motorcycle Racing but don't race yourself then the club is always looking for marshals to help either at trackside or behind the scenes with organising our hectic race days. Full details of how you could help are available from our marshals Co-ordinator. Telephone Jackie Peat on 01842 879 311 or fax 01842 879 312

9/05/99

Race 14 10 Laps

## THE CHARLIE SANBY MEMORIAL TROPHY RACE

Group 1 Machines - Single Cylinder

Lap Distance: 1.0000 Miles

Race Distance: 10.0000 Miles

No	Rider	Machine	Year	cc	Town
20a					
1	JERRY SUMMERFIELD	Pelly Norton	1961	500	WIRKEWORTH
2	ROBERT ROWE	Manx Norton	1960	499	ASHFORD
3	PHIL BEATON	G50 Melisse	1963	500	LITTLEHAMPTON
4	NICK HOUGHTON	Seeley Nourish	1972	500	OAKHAM
5	MICK MORETON	Seeley G50	1970	496	STOURPOER ON SEVERN
7	ERIC QUARTIER	G50 Seeley	1967	496	
9	TIM JACKSON	Norton	1958	500	NORTON LINDSEY
10	HANS-GEORG STUTZ	Pelly Manx	1970	500	D-36275 KIRCHHEIM
11	TONY SMITH	Matchless	1962	500	READING
12	GEORGE GOLDIE	Seeley G50		500	KILMARNOCK
14	DESMOND WOOTON	Manx Norton	1958	500	DAVENTRY
16	STEVE TOMES	Norton Manx		500	BELPER
18	MARTIN HUDSON	Seeley G50	1968	496	ANDOVER
19	BRUCE CARTER	Allen Manx	1961	499	TADLEY
21	MICHAEL CARTER	Seeley G50	1970	500	SOUTH CHALEY
22	PAUL MORGAN	Seeley Matchlessw Mkl	1968	498	ICKFORD
23	YVES BIRAUD	Seeley G50		500	94140 ALFORTVILLE
24	ANDREW EITE	Manx	1961	499	BOLTON
27	GORDON RUSSELL	Manx Norton	1958	500	NORWICH
28	TONY HIERONS	Seeley G50	1970	496	LEATHERHEAD
33	ANDY PIKE	Seeley G50	1970	500	LOUGHBOROUGH
71	DOUGLAS SNOW	Seeley	1972	496	GUILDFORD
81	VERNON GLASHIER	Rutter Matchless	1977	496	DUNMOW
20b					
8	ANDY REYNOLDS	Seeley AJS		349	BERKHAMSTED
15	PETER CREW	Higley Evans	1967	350	SANDHURST
17	BOB WARREN	AJS	1961	349	NR WROTHAM
20	PHILIP SHARP	Aermacchi	1967	350	ALBURY
30	DAVID JAMES	Aermacchi	1968	349	PEVENSLEY
36	ADRIAN ARMSON	Collon Telstar	1964	350	WOODHOUSE
77	SHAUN HARVEY	Greaves Oulton	1968	344	ONGAR

### THE CHARLIE SANBY TROPHY

The Charlie Sanby Trophy is an invitation race for Group 1 500cc, 350cc and 250cc motorcycles. This race is held each year at Lydden, in memory of Charlie Sanby - a previous winner of the "Lord of Lydden" title. Charlie was a frequent rider with the Classic Club until his death from cancer in 1993. Charlie regularly rode David James's Manx Norton at CRMC meetings with great success.

Wally Maisey his ex-mechanic and a few friends decided to donate a trophy in his memory, and as Lydden was his favourite circuit, it seemed to be the obvious choice for the race to be held here. Wally will be here today to present the trophy to the race winner.

Last years winner was Jerry Summerfield.

9/05/99

Race 15 8 Laps

Atlantic Motorcycles Championship

Sidecars - P1 &amp; P2

Lap Distance: 1.0000 Miles

Race Distance: 8.0000 Miles

## ATLANTIC MOTORCYCLES CHAMPIONSHIP

No	Driver and Passenger	Machine	Year	cc	Home Town
2a					
4	DAVID RAMSDEN / YVONNE OADES	BMW	1972	750	CLECKHEATON
8	KEITH MILLAR / TERRY KELLY	BMW	1972	750	CRAWLEY
10	ROD CLAPHAM / PAUL COATES	BMW	1970	1000	LEEDS
22	DENNIS ETHERIDGE / CHRISTINE ETHERIDGE	Norton	1967	750	MAIDSTONE
23	JEAN-CLAUDE LUJCK / KRIS ??	Norton		500	HOLLAND
24	PAUL THOMAS / NANCY THOMAS	Triton	1960	650	COLCHESTER
76	LARRY LEWIS / KATY LEWIS	Triumph	1952	650	TUNBRIDGE WELLS
99	ADRIAN DEDMAN / THERESA LANGFORD	Norton	1958	745	ELY
2c					
3	ALAN CAVEY / JIM LAIDER	Fiddaman Triumph	1963	670	HAWKHURST
5	RICHARD HOLMES / MARTIN CASBON	BSA	1970	750	WOODFORD GREEN
14	ROGER FARRINGTON / MICHAEL FARRINGTON	Norton	1972	830	WATFORD VILLAGE
15	BILL MC LAREN / PAUL KING	Yamaha	1972	840	CARSHALTON
16	NICHOLAS LUCOCK / SIMON DACHTLER	BSA	1970	750	NR SANDY
17	ROD DAWE / BRIAN ROBSON	Lynx Yamaha	1972	880	DUSTON
18	VINCENT WORTHINGTON / LINDA MCGSHANE	Yamaha	1972	880	ERITH
19	MATHYS KERSTEN / Anja Vereyken	Triumph	1966	650	
71	JAN HERBERT / ALAN BEDFORD	Windle Imp	1970	998	CHELMSFORD

Period I and Period II Sidecars are catered for within the Atlantic Sidecar Championship. **Computer Training Services** will donate the end of year championship trophies for the Period I competitors.

9/05/99  
 Race 16 8 Laps  
 Honda UK Championship Race  
 250cc & 350 cc Twins  
 Lap Distance: 1.0000 Miles  
 Race Distance: 8.0000 Miles

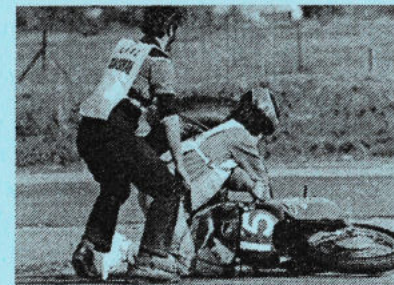


No	Rider	Machine	Year	cc	Town
4b					
1	KARL HAYES	Suzuki	1967	247	CLAY CROSS
4	KEITH BROWN	Suzuki	1967	246	FARNDON
9	IAIN GREEN	Invicta Arrow	1960	247	ORPINGTON
16	RICHARD BOSHIER	Honda	1962	247	HIGH WYCOMBE
23	KEN RATCLIFFE	Suzuki T20	1967	250	WALTON-ON-THAMES
28	STEVE CLARK	Suzuki	1967	250	CLAY CROSS
30	DANNY PULLEN	Suzuki	1967	250	ADDLESTONE
33	ADAM PIKE	Suzuki T20	1966	247	SINFIN
59	ROBERT EDWARDS	Ariel Arrow	1960	247	LUTON
77	DIXE DEAN	Yamaha	1967	250	THETFORD
6a					
2	MARK DAYNES	Honda	1971	350	THEMELTHORPE
3	LEN COOPER	Honda	1972	350	CROWTHORPE
5	GEOFF TAYLOR	Honda K4	1972	350	MERIDEN
6	PETER WILKINS	Honda K4	1971	350	READING
7	GRAHAM ORRIN	Honda	1971	350	OLNEY
8	BOB SLEIGHTHOLME	Honda K4	1971	350	YORK
10	JOHN BOTTING	Honda K4	1972	350	BETCHWORTH
11	SIMON FISHER	Honda	1971	350	NR OLNEY
12	RODNEY BOTTING	Honda K4	1972	350	BETCHWORTH
14	ANTHONY AMBLER	Honda CL	1972	350	BRAMPTON
15	IAN AMBLER	Honda	1972	350	BRAMPTON
17	GORDON POWELL	Honda K4	1971	347	BEDWAS
19	PAUL METCALFE	Honda K4	1972	350	SOUTHWELL
20	MARTIN HILL	Honda K4	1971	350	HOCKLEY
21	GEOFF BROWN	Honda	1974	348	SHEFFIELD
22	STEVEN FOSTER	Honda K4	1972	350	THORNLEY
24	CHRISTOPHER AMBLER	Honda K4	1970	350	BRAMPTON
26	PETE CURZONS	Honda K4	1972	346	DORDON
37	PETER BACON	Honda K4	1971	346	KIDLINGTON

9/05/99  
 Race 17 8 Laps  
 500 cc Group 2 - P1 & P2 Championship Race  
 Lap Distance: 1.0000 Miles  
 Race Distance: 8.0000 Miles

No	Rider	Machine	Year	cc	Town
6b					
2	STEVE CATTON	Norton Dominator	1959	500	AYLESBURY
3	TIM HEALY	Norton 88	1962	500	NR SALISBURY
4	BRIAN WHITE	Dresda	1969	490	SLINFOLD
5	LEIGH CLARK	Triumph	1971	490	HARROW
6	CHRIS BARFE	Honda	1971	500	BERGH APTON
7	PAUL POTTER	BSA	1971	500	BETCHWORTH
8	STEPHEN POTTER	Norton	1960	500	ASHFORD
9	NIGEL HEATH	Velocette	1958	499	BANBURY
11	KEITH SOALL	Honda	1966	500	COLCHESTER
12	KIM HICKS	BSA	1971	499	GRAVESEND
14	DON ORCHARD	Triumph	1973	500	ARUNDEL
15	BARRY DURKIN	Norton	1961	500	WOLVERHAMPTON
16	IAN BAINBRIDGE	BSA	1972	500	BARNARD CASTLE
17	ADAM WILSON	Honda	1971	500	LONDON
18	MARK CAMPION	Seeley Triumph	1972	492	LANCASTER
19	BRIAN WILLIMONT	Triumph	1967	500	HARFORD
28	KEITH JAGGARD	Triumph	1969	490	RUGBY
32	JOHN ALLEN	Dresda	1970	492	TWICKENHAM
64	NIC POWELL	Triumph	1968	490	RUGBY
77	CLIFF RANSLEY	Velo VM	1966	500	HORNSEY

MARSHALS URGENTLY REQUIRED  
 COME AND JOIN IN WITH  
 THE FRIENDLIEST CLUB IN RACING !



BE A PART OF IT ALL !  
 Contact Jackie Peat on 01842 879 311 for details.

9/05/99  
 Race 18 8 Laps  
 R & E Presswork Championship Race  
 251 - 350 cc Single Cylinders  
 Lap Distance: 1.0000 Miles  
 Race Distance: 8.0000 Miles

No	Rider	Machine	Year	cc	Town
1	JERRY SUMMERFIELD	Pelly Manx	1970	349	WIRKEWORTH
2	ROBERT ROWE	Manx Norton	1960	349	ASHFORD
4	NICK HOUGHTON	Ducati	1972	350	OAKHAM
5	NICHOLAS HOOPER	Ducati	1964	350	DARTFORD
7	SHAUN HARVEY	Grooves Oulton	1968	344	ONGAR
8	ANDY REYNOLDS	Seeley AJS		349	BERKHAMSTED
10	HANS-GEORG STUTZ	Norton Manx	1961	350	D-36275 KIRCHHEIM
15	PETER CREW	Higley Evans	1967	350	SANDHURST
16	STEVE TOMES	AJS	1966	350	BELPER
18	MARTIN HUDSON	Seeley 7R	1968	349	ANDOVER
20	PHILIP SHARP	Aermacchi	1967	350	ALBURY
23	BILL DAVIDSON	BSA B40	1971	350	BELVERDERE
24	DAVID HARRISON	Ducati	1972	350	SOLIHULL
28	TONY HIERONS	Aermacchi Metisse	1968	349	LEATHERHEAD
30	DAVID JAMES	Aermacchi	1968	349	PEVENSLEY
33	ANDY PIKE	Aermacchi	1970	350	LOUGHBOROUGH
36	ADRIAN ARMSON	Cotton Telstar	1964	350	WOODHOUSE
37	NIGEL PALMER	Ducati	1967	350	GEDDINGTON
39	LEN HOMER	Ducati	1968	348	MILTON KEYNES
40	LUKE NOTTON	Dubsa	1972	342	WARBOYS
53	VIC HASKELL	Rickman Gold Star	1968	348	LINCOLN
61	RON KEY	Gold Star	1955	350	WOLVERHAMPTON
71	DOUGLAS SNOW	Ducati	1967	340	GUILDFORD

9/05/99  
 Race 19 8 Laps  
 Boyer Bransden Championship  
 501 cc - Unlimited P1 & P2  
 Lap Distance: 1.0000 Miles  
 Race Distance: 8.0000 Miles

Boyer Bransden Ignitions  
*Electrifying Performance*  
 Tel: 01622 730 939

No	Rider	Machine	Year	cc	Town
5a					
5	LEN HUNT	Norton	1963	750	COLCHESTER
7	KEVIN HINTON	Triton	1960	649	ROCHESTER
24	DAVID HARRISON	Triton	1959	650	SOLIHULL
28	STEPHEN BATCHELOR	Triton	1961	650	SANDWICH
29	TIM O'CONNELL	Norton	1985	650	FARNBOROUGH
37	GEOFF ROGERS	Norton	1961	750	FRAMLINGHAM
40	ROBERT PATON	Triton	1953	750	CHELMSFORD
5b					
4	AXEL SCHILLING	Laverda	1972	860	76131 KARLSRUHE
10	ADRIAN COOPER	Norton	1971	920	FLITTON
11	MAXIMILIEN JARRY	BMW	1971	1020	45500 GIEN
12	DAVID BARRETT	Ducati	1974	905	CRANFIELD
15	KEITH RICHARDSON	Rickman Norton	1975	840	SPILSBY
18	BARRY GOODING	Capon Vincent	1970	998	DEAL
19	ALAN FOSTER	Norton Metisse	1970	750	WOLVERHAMPTON
20	JEFFREY JONES	Triumph	1970	748	DUNSTABLE
21	JOHN JONES	Seeley Norton	1971	745	DUNSTABLE
31	PAUL HOGAN	BMW	1972	1000	MEOPHAM
33	DANNY BRENNAN	Triumph	1972	750	GUILDFORD
38	TERENCE MORING	Triumph	1972	830	READING
42	JOHN DOWNS	BMW	1972	998	
53	BILL CANNON	Egli Vincent	1969	998	LEIGH - ON - SEA
77	CLIFF RANSELY	Dresda	1971	750	HORNSEY

9/05/99  
 Race 20 8 Laps  
 Post Classic Championship Race  
 G1 and G2 Post Classic Machines  
 Lap Distance: 1.0000 Miles  
 Race Distance: 8.0000 Miles

No	Rider	Machine	Year	cc	Town
9a					
2	ANDY MARCHINGTON	Suzuki RG500	1981	500	WOKINGHAM
3	ADAM BEXLEY	Yamaha	1980	500	HOOK
4	MICHAEL RUSSELL	Yamaha TZ	1980	359	NORWICH
6	MARK PINCKNEY	Exactweld Yamaha	1981	250	BISHOPS STORTFORD
8	PHIL DAVENPORT	Harris TZ	1981	350	BOURNEMOUTH
9	TERRY SMITH	Maxton Yamaha	1980	350	GRANTHAM
10	ANDREW MAHON	Spondon TZE	1976	347	NUNEATON
15	PETER CREW	Yamaha TZ	1980	350	SANDHURST
20	RICHARD PARKER	Yamaha TZ	1981	350	SWADLINCOTE
50	KEVIN RICHARDS	Yamaha TZ	1981	350	FAVERSHAM
9b					
5	IAN SALTER	Yamaha RD250LC	1981	250	ROMFORD
7	NICK STRATTON	P&M Kawasaki	1980	1075	COLCHESTER
11	MICHAEL COBB	Honda	1974	408	BROADSTAIRS
23	IAN DENNY	Yamaha	1978	400	DIDCOT
25	RAY WARREN	P&M Kawasaki	1976	998	STANFORD LE HOPE
37	PHIL TODD	Laverda	1980	1127	WHYTELEAFE
77	IAN BENTLEY - HOLROYD	P&M Honda	1977	750	SOUTHAM

9/05/99  
 Race 21 8 Laps  
 Honda UK Championship Race  
 Up to 200 cc  
 Lap Distance: 1.0000 Miles  
 Race Distance: 8.0000 Miles



No	Rider	Machine	Year	cc	Town
3b					
2	RICHARD GILHAM	Triumph Cub	1963	200	CRANLEIGH
3	JOHN BOWERS	Honda	1970	198	FAREHAM
4	DANIEL BOWERS	Honda	1970	190	FAREHAM
5	NIGEL BANKS	Honda	1971	197	DOWNHAM MARKET
6	PETER TANNER	Triumph	1963	200	GOMELDON
11	ROGER NICHOLS	Honda	1971	125	MITCHAM
12	SIMON SCROGGINS	Triumph	1965	200	MITCHAM
15	DAVID GILBERT	Suzuki	1967	196	HERSHAM
17	CLIFF FIGES	Minarelli	1971	50	SHEPHERDSWELL
18	ANDY BLUEMAN	Honda CR93	1965	198	SOUTHEND ON SEA
20	FRANK WEBB	Tiger Cub	1960	200	FINCHAMSTEAD
21	CHRISTOPHER GREGORY	CR93 Rep	1968	198	WESTCLIFF ON SEA
22	JOHN LEE	Triumph Tiger Cub	1965	199	NR RUGBY
23	IAN DENNY	Minarelli	1970	49	DIDCOT
24	CHRISTIAN GREGORY	CR93 Rep	1965	198	WESTCLIFF ON SEA
25	GARETH CREW	Honda	1972	200	SANDHURST
30	STEVE BEDFORD	Minarelli	1972	50	PETERBOROUGH
58	MARK CARKEEK	Banlam	1965	125	KETTERING

9/05/99  
 Race 22 8 Laps  
 Summerfield Eng. Championship Race  
 350 & 500 cc Group 1 P1 & P2  
 Lap Distance: 1.0000 Miles  
 Race Distance: 8.0000 Miles

**SUMMERFIELD  
 ENGINEERING  
 LIMITED**

No	Rider	Machine	Year	cc	Town
7a					
1	JERRY SUMMERFIELD	Petty Norton	1961	500	WIRKEWORTH
2	ROBERT ROWE	Manx Norton	1960	499	ASHFORD
3	PHIL BEATON	G50 Melisse	1963	500	LITTLEHAMPTON
4	NICK HOUGHTON	Seeley Nourish	1972	500	OAKHAM
5	MICK MORETON	Seeley G50	1970	496	STOURPOER ON SEVERN
7	ERIC QUARTIER	G50 Seeley	1967	496	
8	VERNON GLASHIER	Rutter Matchless	1972	496	DUNMOW
9	TIM JACKSON	Norton	1958	500	NORTON LINDSEY
10	HANS-GEORG STUTZ	Petty Manx	1970	500	D-36275 KIRCHHEIM
11	TONY SMITH	Matchless	1962	500	READING
12	GEORGE GOLDIE	Seeley G50		500	KILMARNOCK
14	DESMOND WOOTON	Manx Norton	1958	500	DAVENTRY
16	STEVE TOMES	Norton Manx		500	BELPER
18	MARTIN HUDSON	Seeley G50	1968	496	ANDOVER
19	BRUCE CARTER	Allen Manx	1961	499	TADLEY
21	MICHAEL CARTER	Seeley G50	1970	500	SOUTH CHAILEY
22	PAUL MORGAN	Seeley Matchlessw MkII	1968	498	ICKFORD
23	YVES BIRAUD	Seeley G50		500	94140 ALFORTVILLE
24	ANDREW EITE	Manx	1961	499	BOLTON
27	GORDON RUSSELL	Manx Norton	1958	500	NORWICH
28	TONY HIERONS	Seeley G50	1970	496	LEATHERHEAD
71	DOUGLAS SNOW	Seeley	1972	496	GUILDFORD
7b					
20	PHILIP SHARP	Aornacclii	1967	350	ALBURY

**SUMMERFIELD  
 ENGINEERING  
 LIMITED**

**MANUFACTURERS  
 OF CHAMPIONSHIP  
 WINNING 350 &  
 500cc MANX  
 NORTON ENGINES.  
 5 & 6 SPEED  
 GEARBOXES.**

**Cotes Park Industrial Estate  
 Somercotes Derbyshire DE55 4NJ**

**Tel: (01773) 833 025**

**(01773) 835 977**

**Fax: (01773) 520 144**

9/05/99  
 Race 23 8 Laps  
 Arai Helmet Championship Race  
 250 cc Single Cylinder  
 Lap Distance: 1.0000 Miles  
 Race Distance: 8.0000 Miles



No	Rider	Machine	Year	cc	Town
2	RICHARD BOOL	Ducati	1964	248	DATCHET
3	ROBIN READ	BSA	1970	250	STONDON
4	CHARLES WATSON	Ducati	1968	250	AYLESFORD
5	JAMES TOLEMAN	Ducati Monza	1968	250	TWICKENHAM
6	ROY RANDALL	Ducati	1964	250	WEST WICKHAM
7	ROBERT DAVIES	Ducati	1964	250	MALDON
8	WIL SMITH	Ducati	1967	250	SWAFFHAM
9	ROBIN SCUDDER	Ducati	1968	250	READING
10	ROY GILLARD	Ducati	1972	248	SAFFRON WALDEN
11	TERRY CONNER	Ducati	1969	250	GOSPEL OAK
14	CHRIS WALLACE	Ducati	1972	250	BUNTINGFORD
16	DANIEL SHARMAN	Ducati	1972	250	GILLINGHAM
17	PETER ASTON	Greeves	1966	250	WITHERLEY
18	DEREK JORDAN	Colton	1965	247	LEICESTER
19	COLIN SPARROW	Greeves	1966	259	CHESHUNT
20	STEVE CROOK	Ducati	1966	250	CAMBRIDGE
21	MERVYN STRATFORD	Greeves	1966	247	NR AYLESBURY
22	BRIAN FOSTER	Colton	1964	250	HERTFORD
25	BRIAN MIDGLEY	Triumph	1971	250	NR BARNSELY
26	ALAN SMALLBONES	Ducati	1966	250	LINCOLN
28	TONY HIERONS	Saxon Ducati	1966	250	LEATHERHEAD
29	STEPHEN BATH	Ducati	1969	250	ST LEONARDS ON SEA
30	DAVID JAMES	Aermacchi	1963	248	PEVENSLEY
37	NIGEL PALMER	Ducati	1960	250	GEDDINGTON
50	JOHN HYNES	Ducati	1967	250	NR WINCHESTER
74	THOMAS SNOW	DMW	1967	247	GUILDFORD

3a

9/05/99  
 Race 24 8 Laps  
 Atlantic Motorcycles Championship Race  
 Sidecars - P1 & P2  
 Lap Distance: 1.0000 Miles  
 Race Distance: 8.0000 Miles

# ATLANTIC MOTORCYCLES CHAMPIONSHIP

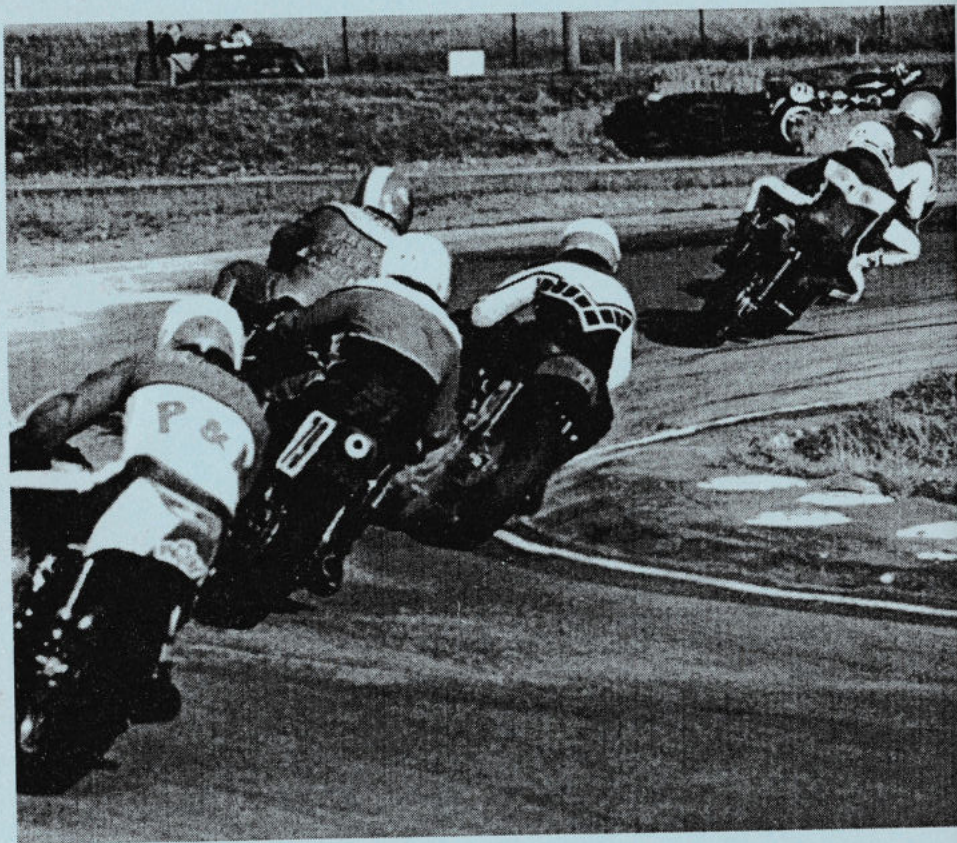
No	Driver and Passenger	Machine	Year	cc	Home Town
2	IAN Mc GHEE / GORDON LUNDBERG	Weslake	1972	900	HITCHIN
6	JEAN-PIERRE CAPEL / DAMIEN VAN PEE	Windle Nourish	1972	900	BELTIUM
7	MICHEL LEDERMANN / BERNADETTE LEDERMANN	Windle Triumph	1972	830	1150 BEUXELLES
9	SEAN REEVES / SARAH EVANS	Saab	1965	750	ASHFORD
11	ANDY EVANS / KEVIN SCOTT	Windle Trident	1971	860	BEXLEY
12	JOHN ANSON / DAVID WELLS	Imp	1971	998	BEWDLEY
20	JOHN SMITH / DANIEL RUDKIN	Triumph Weslake	1972	750	SWAFFHAM
21	KEITH LATHERON / DAVID LATHERON	Imp	1970	998	LEIGH
25	ANDREW REEVES / WAYNE HEMMINGS	Imp	1969	928	TIPTREE
35	RAYMOND REEVES / JOHN MARSHALL	Windle Weslake	1972	880	ASHFORD
3	ALAN CAVEY / JIM LAIDER	Fiddaman Triumph	1963	670	HAWKHURST
5	RICHARD HOLMES / MARTIN CASBON	BSA	1970	750	WOODFORD GREEN
14	ROGER FARRINGTON / MICHAEL FARRINGTON	Norton	1972	830	WATFORD VILLAGE
15	BILL MC LAREN / PAUL KING	Yamaha	1972	840	CARSHALTON
16	NICHOLAS LUCOCK / SIMON DACHTLER	BSA	1970	750	NR SANDY
17	ROD DAWE / BRIAN ROBSON	Lynx Yamaha	1972	880	DUSTON
18	VINCENT WORTHINGTON / LINDA MCSHANE	Yamaha	1972	880	ERITH
19	MATHYS KERSTEN / Anja Vereyken	Triumph	1966	650	
71	JAN HERBERT / ALAN BEDFORD	Windle Imp	1970	998	CHELMSFORD

2b

2c



**THAT'S ALL FOLKS !  
SEE YOU AT OUR  
NEXT MEETING**



**Three Sisters  
SATURDAY 30 MAY / SUNDAY 31 MAY**

  
**CAROLE NASH**  
INSURANCE CONSULTANTS LTD



Voted No.1 by 'RIDE'  
Magazine Readers

**For Award Winning  
Bike Insurance  
Call FREEPHONE**

**0800  
298 5500**

Instant Cover and Free Breakdown Recovery on all policies.

**Open 8.00-6.30 Mon-Fri  
9.00-12.00 Sat**

