



OFFICIAL PROGRAMME 2s. 6d.

SHELSLEY WALSH

for racing and sports cars

Sunday 14 June 1964 12.30

INCLUDING RAC HILL CLIMB CHAMPIONSHIP
FOR 1964

MIDLAND AUTOMOBILE CLUB

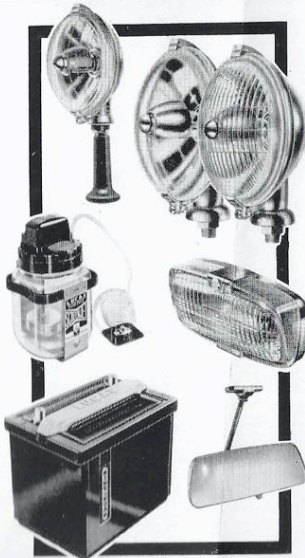


Autocar

FIRST AWAY AND ALWAYS AHEAD · FRIDAY 1s. 6d.

LUCAS

QUALITY ELECTRICAL EQUIPMENT & ACCESSORIES



LUCAS motor essentials and accessories give style and safety to your car - add pleasure to your motoring.

The range includes:-

Foglamp SFT.576 and matching long range lamp SLR.576. Add safety and elegance 79/6 each.

HL.576 portable handlamp. 12 volt 130/- each.

Screenjet. All electric and automatic, works at a touch of a button. Complete with fittings 87/6 each.

Reversing lamp 661. Slim style back-fixing model. Functional luxury for any car. 57/6 each.

S7 Battery. All LUCAS car type batteries have one years insured life plus 12 months guarantee.

Anti-dazzle-dipping mirror. 8" prismatic pattern with finger touch button to eliminate glare. 49/6 each.

obtainable from

A. T. GITTINS & SON LTD.

THE LARGEST LUCAS MIDLAND AGENT
GIVING DAILY SERVICE TO THE TRADE

115-116 IRVING STREET, BIRMINGHAM 15 · TEL: MIDLAND 2060

NOTICE

WARNING TO THE PUBLIC

MOTOR RACING IS

DANGEROUS

"It is a condition of admission that all persons having any connection with the promotion and/or organisation and/or conduct of the meeting including the owners of the land and the drivers and owners of the vehicles and passengers in the vehicles, are absolved from all liability arising out of accidents causing damage or personal injury (whether fatal or otherwise) howsoever caused to spectators or ticket holders."



DISTRIBUTORS

AUSTIN

R. J. EVANS & KITCHEN LTD.

HORSEFAIR
BIRMINGHAM, 1

MIDLAND 2781

2

MIDLAND AUTOMOBILE CLUB

President — S. H. NEWSOME, J.P.

FOUNDED AND AFFILIATED TO THE A.C.G.B.I. IN 1901

OFFICIAL PROGRAMME

OF THE
SHELSLEY WALSH

NATIONAL OPEN SPEED HILL CLIMB

FOR
RACING, SPORTS & G.T. CARS

A QUALIFYING EVENT FOR THE FOLLOWING CHAMPIONSHIPS

THE R.A.C. BRITISH HILL CLIMB CHAMPIONSHIP

M.A.C. JUNIOR HILL CLIMB & SPRINT CHAMPIONSHIP

THE "SPORTS CAR" CHAMPIONSHIP

HELD ON

SUNDAY, 14th JUNE, 1964

at 12.30 p.m.

R.A.C. PERMIT No. RS/704

SECRETARY'S OFFICE

4 VICARAGE ROAD, EDGBASTON, BIRMINGHAM 15

TELEPHONE : EDGbaston 0440

SHELSLEY OFFICE—Telephone : SHELSLEY BEAUCHAMP 251

SHELSLEY PRESS —Telephone : SHELSLEY BEAUCHAMP 211

3

"PROGRESSO"

STEEL BIN STORAGE SYSTEM



All Units are 36" wide x 9" high x 12" deep.

The STANDARD UNIT
includes 2 Adjustable Dividers.

The "A" UNIT
12 Drawers each with Cardholder, Drawer Pull and 2 Adjustable Dividers.

The "B" UNIT
2 Flat-shelf compartments each 36" wide x 4½" high x 12" deep.

The "C" UNIT
Two lock up compartments with differing locks.

The "D" UNIT
As the "B" Unit without centre shelf.

Tops, Bases, Bar Stock-Rails and Gasket Peg Racks also available.

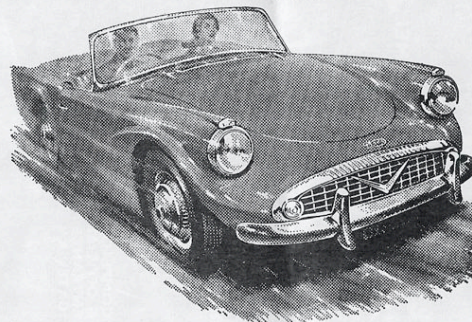
BUY "PROGRESSOS" FROM THE MANUFACTURER OF STEEL STORAGE EQUIPMENT FOR OVER 40 YEARS

STEEL EQUIPMENT COMPANY LTD
OLDBURY ROAD, GREETS GREEN, WEST BROMWICH Tel: TIPTON 2521/5

4

Exciting....Exhilarating

Daimler SP 250



Never before has such dash and dignity been combined in so masterful a sports car, never before such vivid V8 power — such pinpoint handling and balanced suspension. Disc brake safety on all four wheels — real hide trim and a choice of fabric or detachable hard top. Come and take the wheel of this Daimler speed sensation for a trial run...SOON!

The Daimler range also includes the 4½ litre Majestic Major, the Daimler Limousine and 2½ litre V8 Saloon.

REEVE & STEDEFORD LTD

BROAD STREET
BIRMINGHAM, 1

Telephone: MID 0842

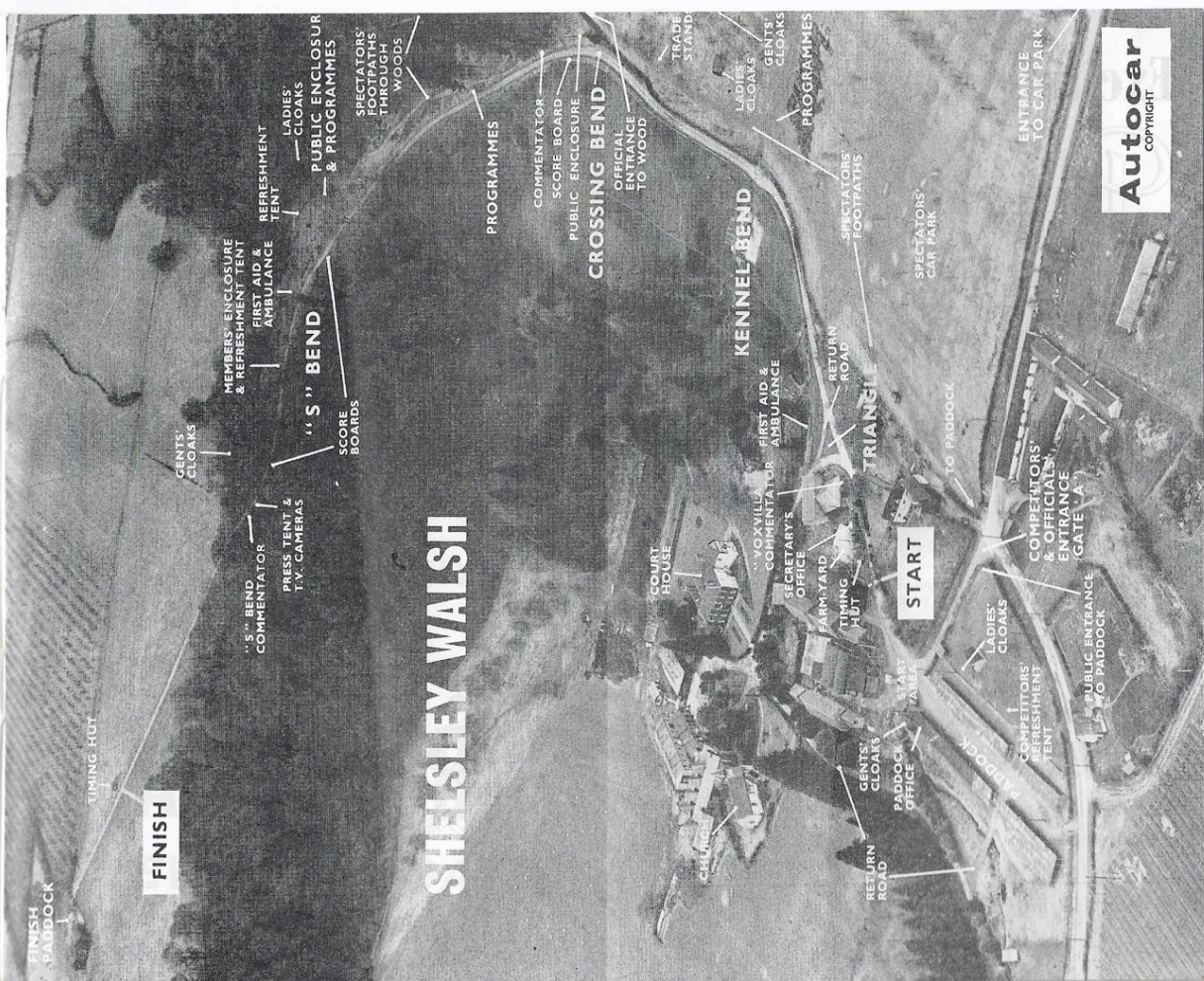


Daimler Distributors

for Birmingham

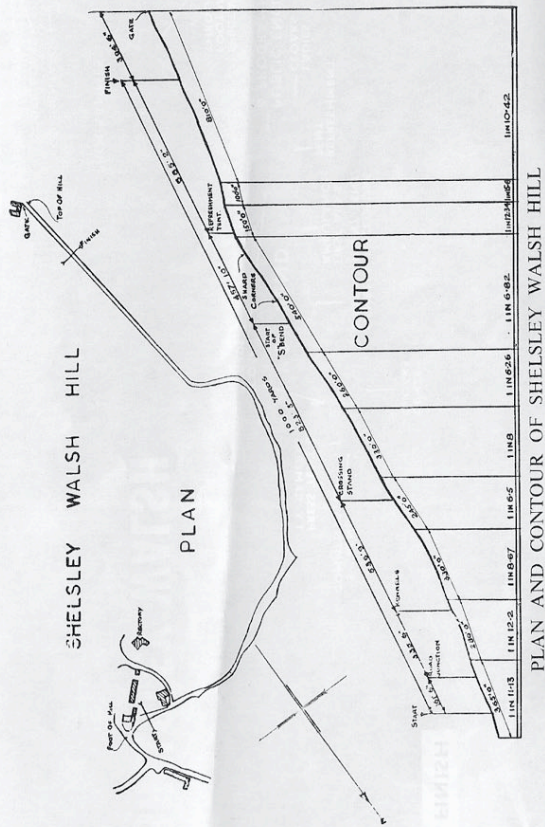
★ OPEN FOR PLAN OF HILL

5



SHELSLEY WALSH

Autocar
COPYRIGHT



**FOR REALLY
UP-TO-DATE COMMENT
AND PICTURES ON**

motoring news

motoring sport

motor racing

read

AUTOSPORT

EVERY FRIDAY

VOLKSWAGEN?

FIAT?

Call At:

**BLYTHEWAY MOTORS
LTD.**

Directors: B. ECCLES S. A. ECCLES

ALCESTER ROAD · WYTHALL

Telephone: 2130

Where you will receive the personal attention of
Bryan Eccles (unable to hillelimb this season owing
to pressure of business).

He will be delighted to give you a demonstration in
any model and also the very highest allowance for
your present vehicle

Excellent Service and Spares Facilities

OPEN UNTIL 9 p.m. EVERY DAY

MIDLAND AUTOMOBILE CLUB

(FOUNDED 1901)

OFFICIALS

1964

President

S. H. NEWSOME, J.P.

Vice-Presidents

Commodore The Rt. Hon. The EARL HOWE, P.C., C.B.E., V.R.D.,
R.N.V.R.

Sir FRANCIS WINNINGTON, Bt.

GEORGE LANCHESTER

C. A. BIRD

SIR GERALD NABARRO, M.P.

LESLIE WILSON

L. M. AUSTIN

General Committee

J. L. COZENS, M.B.E., T.D. (Chairman)

R. HUGHES

T. R. PRICE

R. G. HARPER

C. R. INSTONE, M.B.E.

R. B. BECK

G. S. H. WARD

W. J. WHITTALL

M. CHAFFEY

E. S. SAPCOTE

C. S. HENDERSON

R. W. PHILLIPS

A. B. GRIFFITHS

H. C. HASTINGS

D. A. HAIGH

Treasurer

G. OLDFIELD, A.A.C.C.A., A.T.I.I.

Auditors

E. WOOLLEY & CO.

Secretary

GERARD B. FLEWITT

Assistant Secretary

Miss M. E. GRIFFITHS

M.A.C. OFFICE, 4 VICARAGE ROAD, EDGBASTON, BIRMINGHAM 15

STOCKLAND

BIRMINGHAM

A BRIEF SUMMARY OF OUR PREMISES AND SERVICES OFFERED

Stockland Garage

MARSH HILL, ERDINGTON
ERD 2488

Gliderways Coaches

BEARWOOD RD., SMETHWICK
BEA 2388

Stockland Finance

MARSH HILL, ERDINGTON
ERD 2488

Stockland Garage

WHITEHEAD ST., LOZELLS
NOR 1404

Stockland Garage

SHORT HEATH RD. ERDINGTON
ERD 7239

Stockland Garage

6 WITTON ROAD, ASTON
NOR 4588

Farcroft Service Station

ROOKERY RD., HANDSWORTH
NOR 7125

Stockland Garage

NEW JOHN STREET WEST,
NEWTOWN
NOR 1224

Stockland and Gliderways Coaches for Express Holiday Services to the Coast
Day, Half-Day and Evening Tours — Private Hire and Continental Tours
Ford, Austin and Rootes, Sales and Service — Mechanical and Body Repairs
Vehicle Recovery & Breakdown Service — Hire Purchase — Regent Petrol Service

HILL CLIMB OFFICIALS

SUNDAY, 14th JUNE, 1964

STEWARDS OF THE MEETING

For the R.A.C.—To be appointed.

For the M.A.C.—S. H. NEWSOME, J.P., J. L. COZENS, M.B.E., T.D.
R. HUGHES

Clerk of the Course—C. R. INSTONE, M.B.E.

Deputy Clerk of the Course—C. S. HENDERSON

Timekeeper (R.A.C.)—G. HALL

Scrutineers (R.A.C.)—J. HARTLEY-SMITH, G. HARTLEY-SMITH,
G. W. G. WARD and TEAM

Chief Marshal—P. M. STEVENSON

Chief Hon. Medical Officers—Drs. W. D. STEEL, F. KURREIN,
J. L. HUNTER, R. MAYFIELD
A. LAIDLAW, Mr. J. JAMES, F.R.C.S.

Start Judges—W. GIBBS and A. E. GABRIEL.

CHIEF SECTION MARSHALS

Fire Precaution—T. L. LANGFORD (Course).

Paddock—(Start) B. BODYCOMBE (Finish) A. E. R. SMITH

Course Control—(Start) G. S. TANNER, E. S. SANCOTE
(Finish) B. SPENCER, O.B.E.

Time Boards—(Paddock) Mrs. A. D. RICHARDS, Mrs. G. TANNER

Times Audit—B. SANCOTE and TEAM.

Car Park—R. G. HARPER.

Programmes—R. G. HARPER

Public Address Announcers—N. HAY (Vox Villa)
G. RICHARDSON (Vox Villa).
A. DERRY (Crossing).
J. WILLIS
H. OLIVE } (S. Bend).
P. CAHILL }

Breakdown Service—BEACON MOTORS LTD.
COLMORE DEPOT LTD.

Ambulance and First Aid—THE ST. JOHN AMBULANCE BRIGADE

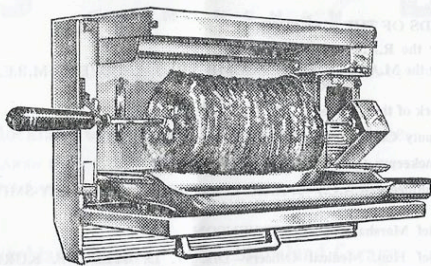
Public Address Equipment and

Course Communications—THE "ANTONE" COMPANY.

Control Office—Miss M. E. GRIFFITHS.

Secretary of the Meeting—GERARD B. FLEWITT.

The most exciting cooking development of the century



Cannon 'Foldaway'

OPEN ROASTING SPIT AND GRILL

Open Spit Roasting retains the succulent flavour of meat and poultry and game, impossible by any other method of cooking. Cooking in an oven is Baking — not Roasting! Overnight, with the amazing 'Foldaway' you become the equal of the finest Roast and Grill Chef in the world... you can grill or roast anything from a sausage to a 12 lb. joint or bird. It's plug-in portable for instant use in kitchen, dining-room, or out-of-doors for a family barbecue.

- NO SMELLS OR SMOKE
- NO SPITTING OR SPLATTERING
- WIPE-OVER CLEANED IN 30 SECONDS
- DIRTY OVEN CLEANING BANISHED FOR EVER
- FOLDS AWAY INTO 4½" OF SPACE

33 guineas
(including Kebab Attachment)

Ask for a demonstration at

FLEWITT LIMITED

4 VICARAGE ROAD, EDGBASTON, BIRMINGHAM 15

TELEPHONE: EDG 0204

PROGRAMME AND ORDER OF ASCENT

14th JUNE, 1964, at 12.30 p.m.

Governed by the International Sporting Code of the F.I.A., the General Competition Rules and Standing Supplementary Regulations of the Royal Automobile Club and the Supplementary Regulations of the Midland Automobile Club.

Each car will have two runs in the Open Competition—the better time to count for all awards.

For the R.A.C. Hill Climb Championship see page 28. Cars entered for this will have two extra runs at the end of the second runs in the Open Competition.

†—R.A.C. Hill Climb Championship. ‡—M.A.C. Junior Hill Climb and Sprint Championship. *—Sports Car Championship. CAR RECORD: TONY MARSH, 33.54 secs.

CLASS I—Production, Touring, Sports and G.T. Cars up to 2600 c.c.

CAR No.	DRIVER	CAR	S.	C.C.	ENTRANT'S TOWN	1st RUN	2nd RUN
1. (†)	G. H. Keylock	Lotus Elan	—	1596	Hoy-on-Wye	—	—
2.	D. J. R. Preston	Lotus Elan	—	1958	Sutton Coldfield	—	—
3.	L. D. Abbott	Lotus Elite	—	1216	Belper	—	—
4.	J. Jackson	Lotus Elan	—	1596	Birmingham	—	—
5.	Miss B. Haig	Frazer Nash	—	1971	Peworth	—	—
		Le Mans	—			—	—
6.	D. A. Haigh	Frazer Nash	—	1970	Four Oaks	—	—
		Le Mans	—			—	—
7. (*)	W. A. Cleave	Morris (1937)	—	1086	Callington	—	—

RECORD: R. ROSE 39.45 secs

Spectators must keep behind the barriers and those occupying front seats of the enclosures must remain seated and not obscure the view of those behind.

BIRMINGHAM'S FORD CENTRE

BEACON
FORD DISTRIBUTORS

Every Ford facility under one roof

NEW FORD CARS

Immediate delivery of all models

NEW FORD VANS & COMMERCIALS

USED CARS VANS & COMMERCIALS

SPARES & ACCESSORIES

SERVICING & REPAIRS

UNDERSEALING

BEACON MOTORS LTD.
ASTON ROAD, BIRMINGHAM, 6
Phone ASTon 5841 (10 lines)

PROGRAMME AND ORDER OF ASCENT (continued)

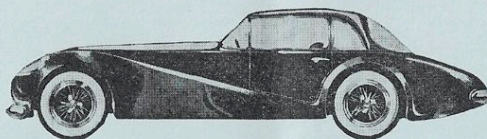
CAR No.	DRIVER	CAR	S.	C. C.	ENTRANT'S TOWN	1st RUN	2nd RUN
8.	R. E. Meredith	Morgan +4	—	1991	Bromsgrove
9.	B. V. M. Jenkins	Morgan +4	—	2138	Swense
10.	S. Perry	Morgan +4 Plus	—	2138	Birmingham
11. (H)	Tony Marsh	Reliant Sabre 6	—	2553	Petersfield
ENTRANT: A. RUSLING							
12.	R. Rose	Marcos	—	1800	Henley-in-Arden
14.	R. D. Jennings	Austin Cooper	—	1300	Guildford
15.	G. P. Smith	T.V.R. II	—	1800	Wen
16.	D. N. Fletcher	Austin Healey Sprite	—	1098	Shrewsbury
17. (H)	D. R. Good	Lotus Elan	—	1596	Maidenhead
ENTRANT: G. H. KEYLOCK							

CLASS 2.—Production, Touring, Sports and G.T. Cars 2601 c.c. and over

RECORD: P. SCRAGG 39.02 secs

18.	A. J. Lambert	Jaguar "E"	—	3781	Solihull
19.	P. Gaskell	Jaguar XK140 C	—	3442	Solihull
20.	G. S. H. Ward	Jaguar Mk. II	—	3781	Sutton Coldfield
21.	T. B. L. Jones	Austin Healey	—	2639	Crown Arms
22. (H)	P. Scragg	Jaguar "E"	—	3781	Macclesfield
23.	Mrs. R. Lambert	Jaguar "E"	—	3781	Solihull

*You can't tell
a Sievwright job . . .*



. . . that's the Beauty of it !

Should you have an ACCIDENT . . .

We are enthusiasts about all types of Motoring, whether it be racing, rallying, hill-climbs, sprints or normal everyday driving, and we hate to see good cars damaged.

Unfortunately, even the finest drivers do have accidents, even though sometimes it may be somebody else's fault.

You may have a large and expensive car or a small inexpensive one. It may be old or new; veteran, vintage or bread and butter, and it may be severely damaged or only grazed; but however small or however large the trouble may be, it needs the care and expertise that only years of experience can give.

We have been enthusiasts for over forty years and we like working for enthusiasts. If you need our help, our experience is at your immediate service.

**R. H. SIEVWRIGHT
& CO. LTD.**

ACCIDENT REPAIR SPECIALISTS

CLEVELAND ROAD · WOLVERHAMPTON

Telephone: **WOLVERHAMPTON 26535-7**

PROGRAMME AND ORDER OF ASCENT (continued)

CLASS 3—Sports Racing Cars up to 1600 c.c.

CAR No.	DRIVER	CAR	S.	C. C.	ENTRANT'S TOWN	1st RUN	2nd RUN
24. (††)	B. A. Reardon-Smith	Lotus 23B	—	1588	Coventry
ENTRANT: REARDON-FIELD RACING TEAM							
25. (†)	R. M. Terry	Terry Aero Climax	—	1475	Redditch
26. (††)	G. M. Campbell	Eva VII	—	1150	Nottingham
27. (††)	J. T. Butterworth	Lotus 23	—	1474	Rossendale
28.	B. D. Parcock	Lotus Climax	—	1098	Skippon
ENTRANT: T. R. CLAPHAM (ENG.) LIMITED							
29. (†)	A. H. Van Moyland	Cooper Climax	—	1460	Aberavenny
ENTRANT: A. V. M. MOTORS LTD.							
30.	A. Jones	Lotus	—	1098	London
31. (†)	B. L. Field	Lotus 23B	—	1594	Cardiff

RECORD: P. BOSHER, JONES 37.24, 1sec.

CLASS 4—Sports Racing Cars 1601 c.c. and over

32.	D. B. Farrell	Farralac	—	5980	Edgware
33.	P. Chapman	Chapman Mercury	—	5420	Sheffield
34. (††)	P. Scragg	Cooper Monaco	—	5340	Macclesfield
35.	J. R. Walton	Walton-Bristol	—	1971	Sheffield

RECORD: C. SUMMERS 35.94, 1sec.

DISTRIBUTORS OF:
**MORRIS, M.G., RILEY
 VANDEN PLAS PRINCESS**
 CARS
MORRIS COMMERCIAL
 VEHICLES
 R. DEALERS OF:
WOLSELEY CARS

BRADBURN & WEDGE LTD.
 DARLINGTON STREET, WOLVERHAMPTON. Tel.: 20456

THE LATEST
 MODELS OF THE ABOVE
 ARE ON DISPLAY
 AT OUR WOLVERHAMPTON
 SHOWROOMS
 THESE INCLUDE
 THE FABULOUS
**MORRIS MINI-MINOR
 AND M.G. MIDGET**

PROGRAMME AND ORDER OF ASCENT (continued)

CLASS 5—Formula Junior and Formula 3

CAR No.	DRIVER	CAR	S.	C.C.	ENTRANT'S TOWN	1st RUN	2nd RUN
36. (†)	C. Priddey	Lotus 20	—	1098	Swansea
37. (‡)	D. Parker	Lotus 18	—	1100	Shirley
38.	E. J. Brabin	Lotus 18	—	997	Loughborough
39.	D. Robinson	Lotus	—	997	Liverpool
40. (†)	L. H. Woodcock	Lotus 20	—	1098	Kingswinford
41. (††)	D. Nicklin	Lotus 20	—	1100	Ebbw Vale
42.	J. B. Welton	Eva F.3	—	850	Preston
43. (†)	M. J. Hawley	Cooper, F. J.	—	1098	Solihull
44.	T. Jones	Envoy F. J.	—	997	Pontyclun
45.	R. Fuchs	Lotus 20	—	1098	Swansea

RECORD: J. MACKLIN 37.11 sec.

CLASS 6—Racing Cars up to 500 c.c.

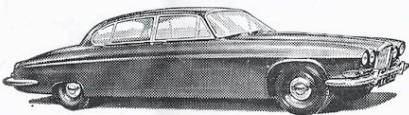
46.	A. A. May	Cooper Mk. IX	—	499	Solihull
47.	P. Williams	Cooper Mk. IX	—	500	Shrewsbury
48.	C. Burrows	Cooper Mk. IX	—	500	Birmingham
49. (‡)	P. M. Schroeder	Cooper-Norton	—	499	Stafford
50. (‡)	M. E. Turner	Cooper Mk. IV	—	498	Birmingham
51. (†)	R. L. Sweet	Dastle-Norton	—	500	Salisbury
52.	D. J. Gill	J.B.S. JAP	—	500	Wellington

RECORD: R. B. JAMES 39.33 sec.

JAGUAR



JAGUAR 'E' FIXED HEAD COUPE £1913.7.1 inc. P.T.



JAGUAR MARK X SALOON AUTOMATIC TRANSMISSION
£2157.8.9 inc. P.T.

DISTRIBUTOR

W'TON
25852
STAFFORD
2366

ATTWOOD

WALSALL
5111
BILSTON
41538

Daimler

Cyril Williams
(MOTORS) LTD

ST. MARK'S STREET, WOLVERHAMPTON

Telephone: 25374-5-6-7 (4 lines)

DISTRIBUTORS OF DAIMLER CARS
FOR SOUTH STAFFORDSHIRE & SHROPSHIRE



Cyril Williams
MOTORS LTD

ST. MARK'S STREET, WOLVERHAMPTON

Telephone: 25374-5-6-7 (4 lines)

DISTRIBUTORS OF ASTON MARTIN & LAGONDA CARS
IN 10 COUNTIES OF MIDLANDS & WALES

BRADBURN & WEDGE LIMITED

Morris Distributors

Wolverhampton 20456

THE BIG BREAKTHROUGH
IN SUSPENSION !!

Completely New M.G. 1100

WITH
HYDROLASTIC FLOAT ON FLUID
SUSPENSION

ANOTHER *by* the ISSIGONIS TEAM
WORLD BEATER

PROGRAMME AND ORDER OF ASCENT (continued)

CAR No.	DRIVER	CAR	S.	C.C.	ENTRANT'S TOWN	1st RUN	2nd RUN
53. (†)	L. A. Stone	Cooper-Norton Mk. VII	—	499	Basingstoke		
54. (‡)	J. Barrowclough	Cooper Mk. X	—	499	Wallington		
55.	R. Williams	Cooper Mk. X	—	499	Manchester		
56. (†)	J. Horrex	Cooper Mk. X	—	500	Hove		
57. (‡)	M. J. M. Walker	Kieft "Tiger Kitten"	—	500	Hagley		
58. (‡)	P. Meyer-Scarle	Cooper Mk. VIII	—	500	Swansen		
59.	M. J. Murphy	Cooper Mk. V	—	500	Stafford		

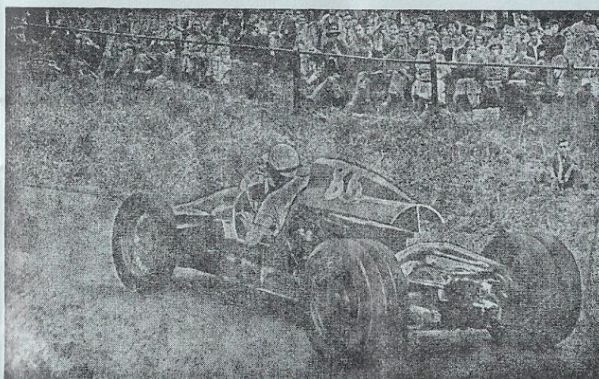
CLASS 7—Racing Cars 501 c.c. to 1500 c.c.

60. (†)	J. D. Macartney-Filigate	Cooper Mk. VI	S	1142	Solihull		
61.	J. Royal	Cooper Climax	—		Shrewsbury		
ENTRANT: F. PURSLOW							
62.	Sir N. Williamson Bt.	Cooper	—	1475	Mortimer		
63.	P. R. Dobson	Cooper Mk. V	S	1000	Cleghurt		
64. (†)	T. R. Clapham	Cooper	—	1220	Keighley		
65. (†)	J. T. Payne	Cooper	S	998	Birmingham		
66.	R. G. Phillips	Cooper Mk. VI	—	650	Pontypool		
67. (†)	K. Moore	Fairley	S	1460	Birkenhead		
68.	P. J. A. Evans	Chawner, G. N. Special	—	1000	Sale		
69. (†)	P. Boshier-Jones	Lotus Shorrock Climax	S	1220	Newport		
70. (‡)	P. V. Ridgway	Lotus F1	—	1500	Redditch		

RECORD: R. W. PHILLIPS 35.08 secs.

SPECIAL BADGES TO CLUBS' REQUIREMENTS

SUPPLIERS OF CAR AND MEMBERSHIP BADGES TO THE
M.A.C. AND MANY OF THE LEADING CLUBS
AT HOME AND ABROAD.



FRANK LeGALLAIS (L.G.S.) N/Sc. Shelsley Special Record Holder, 38'20 secs.

ACTUAL MANUFACTURERS
OF
ENAMELLED BADGES · MEDALS · CUPS
SHIELDS · TANKARDS
TROPHIES OF EVERY KIND
DESIGNS AND QUOTATIONS ON REQUEST

MARPLES & BEASLEY LTD.
260 NEW JOHN ST. WEST, BIRMINGHAM 19
Telephone: **NORthern** 5621/2

PROGRAMME AND ORDER OF ASCENT (continued)

CAR No.	DRIVER	CAR	S.	C.C.	ENTRANT'S TOWN	1st RUN	2nd RUN
71.	R. C. Cook	Cooper	—	998	Worcester		
72.	B. H. Davenport	G. N. Spider	—	1496	Macclesfield		
73.	M. C. Elwes ENTRANT: SIR. N. WILLIAMSON, Bt.	Cooper	—	1475	Mortimer		
74.	A. L. Dealey ENTRANT: J. D. MACARTNEY-FILGATE	Cooper Mk. VI	S	1142	Birmingham		
75. (†) F. Purstow		Cooper Climax	—		Strewsbury		

CLASS 8—Racing Cars 1501 c.c. and over

76. (†) R. G. Mickel	Cooper	—	2462	Glasgow		
77. (†) A. B. Griffiths	B.R.M.	—	2485	Fair Oaks		
78. (†) Miss P. Burt	Cooper	—	1980	Gt. Bookham		
79. (†) W. A. Liddell	Cooper	—	4727	Andover		
80. (†) J. Macklin	Cooper-Butck	—	3500	Christchurch		

RECORD: TONY MARSH 33.54 secs.

THE MIDLAND AUTOMOBILE CLUB

4 VICARAGE ROAD · EDGBASTON
BIRMINGHAM 15

FIXTURES FOR 1964

- January 24th (Friday)**
FILM SHOW 7.30 p.m., The Kings Head Hotel, Hagley Road, Bearwood.
"The Ragged Edge (Indianapolis 1962), "Shelsley" (1931-1938), and other films of interest. Followed by Buffet.
- February 7th (Friday)**
DINNER AND DANCE 7.30 p.m., George Hotel, Solihull.
- February 21st (Friday)**
FILM SHOW 7.30 p.m., The Kings Head Hotel, Hagley Road, Bearwood.
"Moss, the First 10 Years"; "The Home Made Car" (an enthusiast discovers a bull-nosed Morris); "The Faithful Carrier" (historic vehicles), etc. Followed by Buffet.
- March 13th (Friday)**
ANNUAL GENERAL MEETING 7.00 p.m. FILM SHOW 8.00 p.m., The Kings Head Hotel, Hagley Road, Bearwood. "Works Entry" (Ford and B.M.C. Rallying 1963); "Highway Holiday" (Rallying in France, Switzerland and Italy, etc.); "Six Days in Scotland" (Six-Day Motor Cycle Trial), etc. Followed by Buffet.
- April 12th (Sunday)**
SPRINT (C) CURBOROUGH (Near Lichfield). Co-Promotion Coventry and Warwicks M.C.
- June 13th/14th (Saturday and Sunday)**
SHELSLEY WALSH NATIONAL OPEN HILL CLIMB (R.A.C. HILL CLIMB CHAMPIONSHIP EVENT).
- July 18th (Saturday)**
MEMBERS' TESTING DAY.
- July 19th (Sunday)**
SHELSLEY WALSH (R) INTER-CLUB HILL CLIMB.
- August 29th/30th (Saturday and Sunday)**
SHELSLEY WALSH NATIONAL OPEN HILL CLIMB (R.A.C. HILL CLIMB CHAMPIONSHIP EVENT).
- October 4th (Sunday)**
SPRINT (R) CURBOROUGH (Near Lichfield)
- October 9th (Friday)**
FILM SHOW 7.30 p.m., The Kings Head Hotel, Hagley Road, Bearwood.
"Objective Monte Carlo" (1963 Monte); "Safari to Success" (East African Safari Rally), etc. Followed by Buffet.
- November 6th (Friday)**
COVENTRY THEATRE PARTY, 7.30 p.m.
- November 7th (Saturday)**
BONFIRE PARTY, 6.30 p.m.
- December 3rd (Thursday)**
SKITTLES 8.00 p.m. "White Swan", Chad Hill, Harborne.

PROGRAMME AND ORDER OF ASCENT (continued)

CAR No.	DRIVER	CAR	S.	C.C.	ENTRANT'S TOWN	1st RUN	2nd RUN
81. (††) B. W. Brown	Kieft	—	1642	Wick
82. (†) Tony Marsh	Marsh Special	—	1960	Petersfield
83. I. Stewright	Ferrari	—	2498	Shifnal
84. The Rt. Hon. The Lord Doune	Maserati	S	2600	Doone
85. (†) R. Fielding	Lotus 21	—	2500	Forres
86. (†) R. P. G. Sturgess	Lotus 22	—	1574	Melton Mowbray
87. (†) P. H. G. Cottrill	Felday Daimler	S	2548	Pontypridd
88. J. Brown	Cooper	—	1960	London
89. (†) I. McLaughlin	Clewer Special	—	4500	Birmingham
90. (†) W. C. Cuff	Cooper-Daimler	—	2548	Frome
91. (†) G. Baird	Lotus Buick	—	3500	West Bromwich
92. (†) Mrs. A. Mickel	Cooper	—	2462	Glasgow

ON COMPLETION OF THE FIRST RUN THERE WILL BE (IF TIME ALLOWS) AN INTERVAL

THE COVENTRY THEATRE

Regency Restaurant open to the public for Luncheons daily. Phone 23143
Box Office 10 a.m. to 8 p.m. COV. 23141 (3 lines)

From Wednesday, 17th JUNE to Saturday, 27th JUNE
Monday to Friday 7.30 p.m. Matinees Thursdays 2.30 p.m. Saturdays at 5 and 8 p.m.

WORLD PREMIERE OF A NEW HILARIOUS WHITEHALL FARCE

"CHASE ME COMRADE!"

by RAY COONEY (Co-author of "One For The Pot")

starring

BRIAN RIX

with

LEO FRANKLYN

BASIL LORD

LARRY NOBLE

leading the famous Whitehall Laughter team

See it **HERE** before it opens at the Whitehall Theatre, London, on the 15th July

Two Weeks Commencing 29th JUNE

Evenings at 7 p.m. Matinees on Saturday at 2 p.m.

Only Visit to the Midlands

THE COVENT GARDEN OPERA

with THE COVENT GARDEN OPERA CHORUS

and THE COVENT GARDEN ORCHESTRA

Repertoire includes:

LE NOZZE DI FIGARO LA BOHEME MACBETH
AIDA MADAMA BUTTERFLY DER ROSENKAVALIER

Full details of repertoire and artistes appearing on request

Week Commencing 13th JULY

Monday to Friday at 7.30 p.m. Saturday at 5 and 8 p.m.

BRIAN RIX ENTERPRISES LTD. PRESENT

"ONE FOR THE POT"

with

JOHN SLATER

Direct from the Whitehall Theatre after a record-breaking three years' run

6-Week Season Commencing 17th AUGUST

THE COVENTRY THEATRE'S SECOND ANNUAL

FESTIVAL SEASON

of OPERA, BALLET, MUSIC and DRAMA

Booking Opens on 29th June—Send for details

Advance Booking Now Open for our Fabulous

1964 BIRTHDAY SHOW

(7-week season commencing Friday, 16th October)

and for

S. H. NEWSOME'S 28th ANNUAL PANTOMIME

"CINDERELLA"

Season commencing on or about 21st December

THEATRE RESTAURANT (FULLY LICENSED)
LUNCHEONS, TEAS, DINNERS (SUPPERS AFTER THE SHOW BY PREVIOUS BOOKING)
PATRONS FROM OTHER PARTS OF THE MIDLANDS CAN BOOK THEIR SEATS FOR THIS
THEATRE AT MOST LEADING TICKET AGENCIES. FULL LIST ON REQUEST
FOR DETAILS OF REDUCED PRICES OF ADMISSION FOR PARTIES OF 75 AND OVER APPLY TO BOX OFFICE
CORPORATION CAR PARK OPPOSITE THEATRE

PROGRAMME AND ORDER OF ASCENT (continued)


R.A.C. BRITISH HILL CLIMB CHAMPIONSHIP ENTRANTS, 1964

NOTE: Drivers who have more than one car entered will nominate which car they will use for the Championship and the numbers of the cars chosen will be announced on the loudspeakers. Only the ten fastest Drivers will run in the Championship, the slowest Driver of the ten starting first and so on.

CAR No.	DRIVER	1st RUN	2nd RUN	CAR No.	DRIVER	1st RUN	2nd RUN
.....	G. H. Keylock	J. D. Macartney-Filigate
.....	Tony Marsh	T. R. Clapham
.....	D. R. Good	J. T. Payne
.....	B. A. Reardon-Smith	K. Moore
.....	R. M. Terry	P. Boshier-Jones
.....	G. M. Campbell	P. H. G. Cortrell
.....	J. T. Butterworth	R. G. Mickel
.....	P. Scragg	A. B. Griffiths
.....	A. H. Van Moyland	Miss P. Burt
.....	B. L. Field	W. A. Liddell
.....	C. Priddy	J. Macklin
.....	F. Purslow	B. W. Brown
.....	L. H. Woodcock	R. Fielding
.....	D. Nicklin	R. P. G. Sturgess
.....	M. J. Hawley	I. McLaughlin
.....	R. L. Sweet	W. C. Cuff
.....	L. A. Stone	G. Bard
.....	J. Horrex	Mrs. A. Mickel

PHOTOGRAPH FRAMES

THE



**FRAMES
ARE THE BEST**

ELISHA MANDER LTD. SUTTON COLDFIELD
ESTABLISHED 1843

J. D. ROSE & SON LTD.

HEAVY HAULAGE CONTRACTORS
AND MILLWRIGHTS

MOBILE CRANE HIRE
MAKERS OF SPECIAL PURPOSE
MACHINERY, JIGS & FIXTURES

COMPLETE FACTORY REMOVALS

72 FACTORY CENTRE, KINGS NORTON, BIRMINGHAM 30
Tel: KIN 3680 and 3010

NATIONAL OPEN SPEED HILL CLIMB

SHELSLEY WALSH :: 14th June 1964

PREMIER AWARDS

CARS

Fastest Time of Day.....£60 and CHALLENGE TROPHY
Second Fastest Time of Day.....£35
Third Fastest Time of Day.....£20

SPORTS CARS

Fastest Time of Day—
"THE M.A.C. SPORTS CHALLENGE TROPHY"

CLASS AWARDS

CLASS	1st	2nd	3rd
1 Production, Touring, Sports and Grand Touring Cars up to 2,600 c.c.	£10	£5	£3
2 Production, Touring, Sports and Grand Touring Cars, 2,601 c.c. and over	£10	£5	£3
3 Sports Racing Cars, up to 1,600 c.c.	£10	£5	£3
4 Sports Racing Cars, 1,601 c.c. and over	£10	£5	£3
5 Formula Junior and Formula 3	£10	£5	£3
6 Racing Cars up to 500 c.c.	£10	£5	£3
7 Racing Cars, 501 to 1,500 c.c.	£10	£5	£3
8 Racing Cars, 1,501 c.c. and over	£10	£5	£3

For the best aggregate of the best times made at the June and August Meetings

"THE KEN WHARTON MEMORIAL TROPHY."

Fastest Time by an E.R.A. Car (at the June or August Meeting) :—
"THE RAYMOND MAYS SHELSLEY E.R.A. CHALLENGE TROPHY." (A souvenir will be awarded for fastest E.R.A. time at each meeting).

Fastest Time by a Shelsley Special :—
"THE ROSSITER CHALLENGE TROPHY."

Fastest Time by a Lady Driver :—
"THE SHELSLEY LADIES' CHALLENGE TROPHY."

Fastest Time by a Non-Supercharged Car :—
"M.A.C. CHALLENGE TROPHY."

Fastest Time by a Formula Junior and Formula 3 :—
"THE GOMM TROPHY."

Team Event, Racing Cars (teams of three Racing Cars, any make) :—
"M.A.C. CHALLENGE CUP."

Team Event, Sports Cars (teams of three Sports Cars of same make) :—
"M.A.C. CHALLENGE TROPHY."

Fastest Time by a Registered Entrant for the Junior Hill Climb and Sprint Championship :—
"M.A.C. TANKARD."



**Pictorial
Calendar
Specialists**

Send For Details

THE CITY PRESS (BIRMINGHAM) LTD.
140 GREAT CHARLES STREET
BIRMINGHAM 3
Telephone: CENTRAL 6245

**Soften the
Blow with a
THOR
Soft-faced
HAMMER**

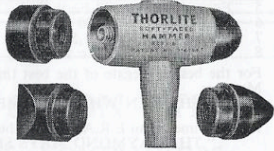


Illustration shows the new and versatile THORLITE soft-faced Hammer Set for most hammering needs. It comprises an aluminium-alloy head, four 2" diameter interchangeable screw-on rubber faces of flat, dome, cone and wedge shapes, and 12" ash handle. Weight 1½ lbs. with any two faces. Ref. 616. Price 19/6d. set.

WILL GIVE A SAFE AND EFFECTIVE BLOW — WITHOUT DAMAGE

A 2½" by 3 lbs. similar set suitable for tyre changing, bodywork and heavy blows is also available. Ref. 620. Price 29/6d. set.

FOR CONSTRUCTING, REPAIRING and SERVICING

Other types now popular with motorists: THOR Copper and Rawhide Hammer, 1½" diam. by 2½ lbs. for knock-off wheel nuts. Price 14/6d. THOR Copper Hammer, 1" x 1 lb. A useful addition to every tool-kit. Price 7/6d. Junior THORLITE Rubber-faced Hammer, 1½" x 10 ozs. For very light work. Price 7/6d.

THOR HAMMER COMPANY have over 25 years of experience in manufacturing soft-faced hammers for the automobile, aircraft, engineering and metalworking industries. The types mentioned above have been produced for motorists, householders, motor-cyclists, do-it-yourselfers and handicraft workers, TO PREVENT DAMAGE AND PROTECT THE FINISH.

Your nearest Halfords branch, garage, tool-dealer or D.J.Y. shop can obtain any of these hammers for you should they not carry stocks. In case of difficulty, please write to makers.

THOR HAMMER COMPANY

HIGHLANDS ROAD . SHIRLEY . BIRMINGHAM

PRESENT HOLDERS OF SHELSLEY RECORDS

30th AUGUST, 1963

Record	Holder	Vehicle	Time
1. Fastest Vehicle (any type)	TONY MARSH	B.R.M.	33.54
2. Fastest M/cycle	GEORGE BROWN	Vincent Special	36.60
3. Fastest M/cycle (Three-Wheeler)	F. BRINDLEY	Vincent Special	40.91
4. Fastest N/S Car	(Pass. : J. WAUGH) TONY MARSH	B.R.M.	33.54
5. S/C Shelsley Special	R. W. PHILLIPS	Fairley Special	35.08
6. N/Sc. Shelsley Special	FRANK LeGALLAIS	L.G.S.	38.20
7. Ladies' Record	Mrs. A. MICKEL	Cooper	36.30
8. Sports Cars	C. SUMMERS	Cooper Monaco	35.94
9. Team (3 Cars)	{ TONY MARSH	B.R.M.	34.41
	{ C. RICHARDSON	Cooper R.R.A.	35.93
	{ The Late J. BERRY	Connaught	38.11
			108.45 secs.

FOR CLASS RECORDS SEE CLASS HEADINGS IN ENTRY LIST

THE ELMS HOTEL

ABBERLEY
Nr. WORCESTER

on road A 443 (Worcester-Tenbury)
1½ miles N.W. of Great Witley

FIRST CLASS RESTAURANT

★ Fully Licensed ★

Advanced booking essential Phone Gt. Witley 231

The Lenchford Hotel

SHRAWLEY - NR. WORCESTER

(on the bank of River Severn :- Worcester - Holt Heath -
Stourport on-Severn road)

LUNCHEONS - 12.00 - 2.30 p.m.

Dinners and Late Suppers 6.30 p.m. - 11 p.m

Proprietor:
MICHAEL BENDALL

Telephone:
OMBERSLEY 229

SHELSLEY WALSH HILL CLIMB

WINNERS and FASTEST TIMES — 1905 - 1963

Date	Driver	Car	Time
1905	E. M. C. Instone	Daimler	77.6 secs.
1906	F. A. Coleman	White Steam Car	80.6 secs.
1907	J. E. Hutton	Berliet	67.2 secs.
	T. W. Bowen	Talbot	67.2 secs.
1908	H. C. Tyrton	Napier	65.4 secs.
1909	H. C. Holder	Daimler	68.4 secs.
1910	J. Hadley	Austin	70.2 secs.
1911	H. C. Holder	Daimler	63.4 secs.
1912	J. Higginson	La Buire	68.8 secs.
1913	J. Higginson	Vauxhall	55.2 secs.
1921	C. A. Bird	Sunbeam	52.2 secs.
1922	M. C. Park	Vauxhall	53.8 secs.
1923	M. C. Park	Vauxhall	52.8 secs.
	R. Mays	Bugatti	52.8 secs.
1924	Cyril Paul	Beardmore	50.6 secs.
1925	Sir Henry Sengrave	Sunbeam	53.8 secs.
1926	B. H. Davenport	Frazer Nash	48.8 secs.
1927	B. H. Davenport	Frazer Nash	47.8 secs.
1928	B. H. Davenport	Frazer Nash	46.2 secs.
1929	Raymond Mays	Vauxhall Villiers	45.6 secs.
1930	Hans Von Stock	Austro Daimler	42.8 secs.
1931	R. J. G. Nash	Frazer Nash	43.2 secs.
June 1932	Earl Howe	Bugatti	44 secs.
Sept. 1932	R. J. G. Nash	Frazer Nash	43.2 secs.
May 1933	Raymond Mays	Villiers S'charge	44.8 secs.
Sept. 1933	Whitney Straight	Maserati	41.2 secs.
June 1934	Whitney Straight	Maserati	40 secs.
Sept. 1934	Raymond Mays	E.R.A.	44 secs.
May 1935	Raymond Mays	E.R.A.	39.6 secs.
Sept. 1935	Raymond Mays	E.R.A.	39.6 secs.
June 1936	Raymond Mays	E.R.A.	41.6 secs.
Sept. 1936	Raymond Mays	E.R.A.	43.31 secs.
June 1937	Raymond Mays	E.R.A.	39.09 secs.
Sept. 1937	A. F. P. Fane	Frazer Nash	38.77 secs.
May 1938	Raymond Mays	E.R.A.	38.90 secs.
Sept. 1938	Raymond Mays	E.R.A.	37.86 secs.
June 1939	Raymond Mays	E.R.A.	37.37 secs.
June 1946	Raymond Mays	E.R.A.	42.79 secs.
Oct. 1946	E. Lyons	Triumph (Solo) M'cycle, 498 c.c.	39.44 secs.
Oct. 1946	Raymond Mays	E.R.A.	39.57 secs.
June 1947	Raymond Mays	E.R.A.	41.50 secs.
Sept. 1947	Raymond Mays	E.R.A.	37.69 secs.
June 1948	Raymond Mays	E.R.A.	37.89 secs.
Sept. 1948	Raymond Mays	E.R.A.	37.52 secs.
Sept. 1948	R. L. Graham	Matchless (Solo) M'cycle, 498 c.c.	38.87 secs.
June 1949	J. G. Fry	Freikaiserwagen	37.35 secs.
Sept. 1949	Geo. Brown	H.R.D. (Solo) M'cycle, 998 c.c.	37.13 secs.
Sept. 1949	J. G. Fry	Freikaiserwagen	37.40 secs.
June 1950	Raymond Mays	E.R.A.	38.61 secs.

SHELSLEY WALSH HILL CLIMB

CONTINUED

Time	Driver	Car	Time
Sept. 1950	R. D. Poore	Alfa-Romeo	37.74 secs.
June 1951	Ken Wharton	Cooper S'charge	37.27 secs.
Sept. 1951	Ken Wharton	Cooper S'charge	36.62 secs.
Aug. 1952	Ken Wharton	Cooper S'charge	36.97 secs.
June 1953	Ken Wharton	Cooper S'charge	36.60 secs.
Aug. 1953	Ken Wharton	E.R.A.	41.82 secs.
June 1954	Ken Wharton	E.R.A. S'charge 1980 c.c.	36.58 secs.
Aug. 1954	Ken Wharton	E.R.A.	35.80 secs.
June 1955	Tony Marsh	Cooper	42.60 secs.
Aug. 1955	Tony Marsh	Cooper	36.08 secs.
June 1956	Ken Wharton	E.R.A.	40.91 secs.
Aug. 1956	Tony Marsh	Cooper	36.02 secs.
Aug. 1957	Dick Henderson	Cooper (S)	35.84 secs.
June 1958	Tony Marsh	Cooper	37.97 secs.
Aug. 1958	Tony Marsh	Cooper	35.60 secs.
June 1959	D. Boshier-Jones	Cooper	36.96 secs.
Aug. 1959	D. Boshier-Jones	Cooper	35.47 secs.
June 1960	D. Boshier-Jones	Cooper	35.76 secs.
Aug. 1960	R. W. Phillips	Fairley	37.33 secs.
June 1961	Tony Marsh	Lotus	35.86 secs.
Aug. 1961	Tony Marsh	B.R.M.	34.41 secs.
Aug. 1962	G. Brown	Vincent 998 c.c. (Solo) M'cycle Record	36.60 secs.
June 1962	Ray Fielding	B.R.M.	34.65 secs.
Aug. 1962	P. Boshier-Jones	Lotus	37.24 secs. } Tie
	P. Scragg	Lister-Jaguar	37.24 secs. }
June 1963	Tony Marsh	B.R.M.	33.54 secs. (Record)
Aug. 1963	P. Boshier-Jones	Lotus Climax	39.16 secs.

The M.A.C. thank

THE WORCESTER CITY

ST. JOHN AMBULANCE BRIGADE

under the direction of Superintendent C. N. Carpenter

An interesting and worthwhile hobby.

Further particulars from above.

SEATED PUBLIC ENCLOSURE

2s. 6d.

AT THE CROSSING BEND

SEATED PUBLIC ENCLOSURE

2s. 6d.

AT THE "S" BEND

*NOTE: Tickets purchased at either enclosure will
admit you to both enclosures.*

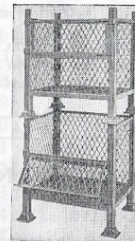
HEATON WARD LTD.

For

FLAME CUT BLANKS

WELDED ASSEMBLIES

PALLETS & STILLAGES



HOLDFAST WORKS, WESTERN ROAD
BIRMINGHAM 18 NORTHERN 8286

*The Committee of the M.A.C. thank sincerely
the undermentioned for Services so willingly
Rendered*

THE ST. JOHN AMBULANCE BRIGADE

Loan of Ambulances, and First Aid Personnel

JOSEPH LUCAS LTD.

BEACON MOTORS LTD

Loan of Breakdown Truck and Personnel

THE AUSTIN MOTOR CO. LTD.

Loan of Ambulance

COLMORE DEPOT LTD.

Loan of Breakdown Truck and Personnel

THE ROVER COMPANY

Loan of Land Rovers

THE ROYAL AUTOMOBILE CLUB

Special Road Signs

M.A.C. & OWEN ORGANISATION M.C. MEMBERS

As Officials and Marshals

*To all our advertisers in this programme for their continued
generous support and to all competitors and mechanics who
make Shelsley possible.*

CONTRACTORS

ANTONE LTD. .. Public Address & Course Communications
LEGG & CO. Birmingham Marquees, Tents, etc.
RONALD SILLS & CO. LTD. Catering
CITY PRESS (Birmingham) LTD. Programmes
L. C. MILNER Hill and Equipment Maintenance
WORCESTERSHIRE CONSTABULARY Special Duty Police Officers

Speed Table for the Hill

Time taken in Seconds	Miles Per Hour	Time taken in Seconds	Miles Per Hour
30	68.18	58	35.3
30.5	67.00	59	34.67
31	66.00	60	34.09
31.5	64.98	61	33.5
32	63.92	62	33.0
32.5	63.00	63	32.49
33	62.00	64	31.96
33.54 (RECORD)	61.05	65	31.5
34	60.20	66	31.0
34.41	59.77	67	30.5
34.5	59.28	68	30.1
35	58.44	69	29.64
36	56.80	70	29.22
37	55.28	71	28.8
38	53.80	72	28.4
39	52.44	73	28.0
40	51.14	74	27.64
41	49.88	75	27.27
42	48.70	76	26.9
43	47.56	77	26.57
44	46.48	78	26.22
45	45.45	79	25.89
46	44.46	80	25.57
47	43.5	81	25.25
48	42.6	82	24.94
49	41.74	83	24.64
50	40.9	84	24.35
51	40.1	85	24.06
52	39.43	86	23.78
53	38.6	87	23.51
54	37.87	88	23.24
55	37.19	89	23.0
56	36.5	90	22.73
57	35.9		

Visit the Paddock

AND SEE THE CARS AT
 CLOSE QUARTERS
 ENTRANCE AT FOOT OF HILL

Admission 10/-

* * * *

LICENSED
 REFRESHMENT TENTS
 situated in the
 MEMBERS' ENCLOSURE
 THE "S" BEND
 AND IN THE PADDOCK



Here's work for *Serck*
Scars of battle need SPECIALIST ATTENTION!

FOR SERVICE TO THE MOTORIST THROUGH
 THE MOTOR TRADE
Send to Serck
 Specialists in RADIATOR and
 BUMPER BAR replacements

Another good Rally over. The next one to look forward to. In the meantime there's work to be done. Radiator faulty? Bumpers battered? **This is work for Serck!** Competition Managers and Garage Foremen know that at 20 Branch Factories throughout the country, Serck have the same appreciation of speed and efficiency as the Rally Driver.



Officially Appointed B.M.C. Radiator Service Stations.
SERCK RADIATOR SERVICES LTD., BIRMINGHAM 11

Tel. VICtoria 6335

WILLIAM COOK (B'HAM) LTD.
 HENLEY STREET · BIRMINGHAM 11

●
 Invite Trade Enquiries For :—

G.K.N. NAILS, SCREWS & BOLTS
 and other Fixing Devices.

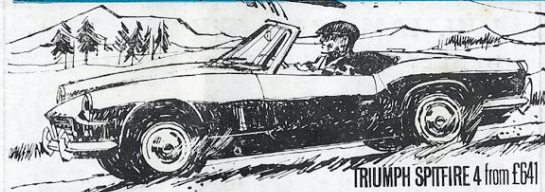
●
 LARGE RANGE OF STOCKS AVAILABLE



JAGUAR E TYPE from £1829

PACESETTERS
see these
three
superb models
at...

TRIUMPH TR4 from £977



TRIUMPH SPITFIRE 4 from £641

NEWSOMES OF COVENTRY

S. H. NEWSOME & CO. LTD. Head Office: HIGHWAY GARAGE, KENPAS HIGHWAY, COVENTRY. Tel: 67787. City Showrooms: CORPORATION STREET, COVENTRY Tel: 25061