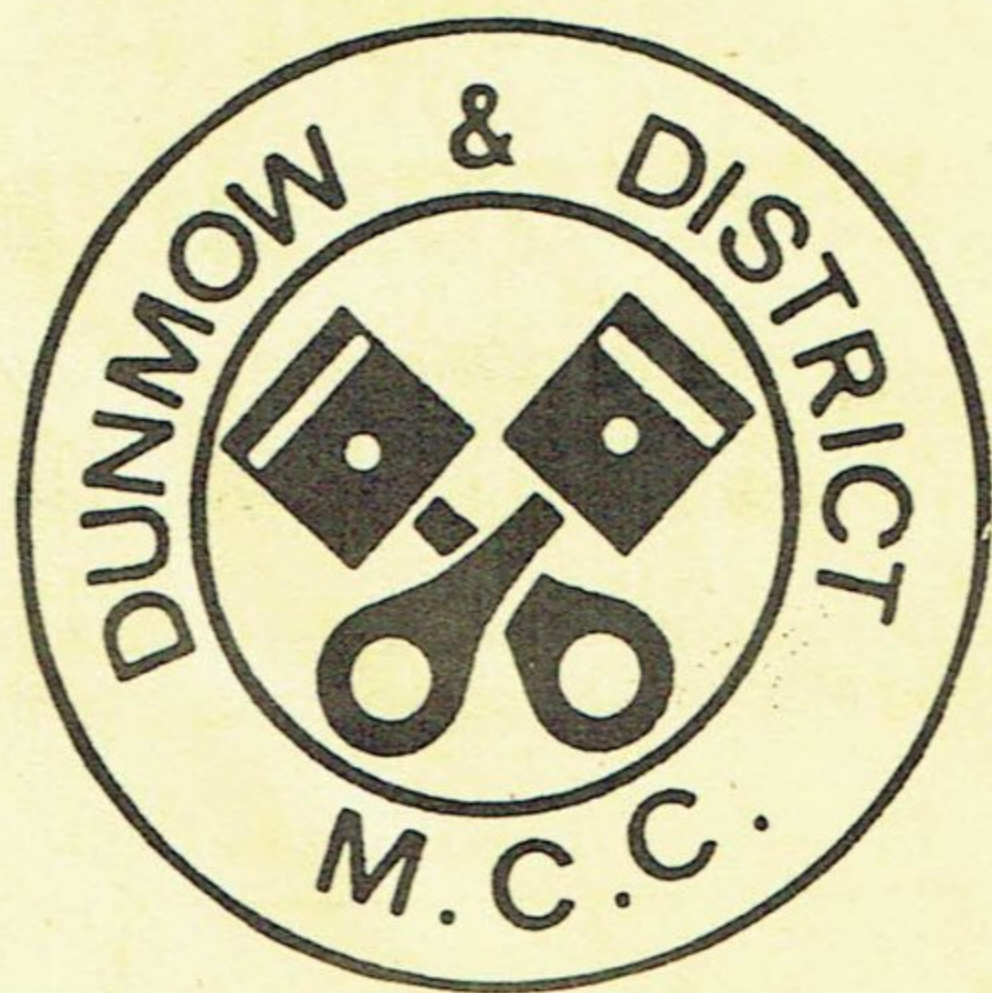


Dunmow & District M.C.C.

WELCOME YOU TO THEIR

SCRAMBLE



This Meeting is sponsored
by
CHANTRY GARAGE (Renault)
DAMAN HEATING (Witham)
SHEPPARDS (Audi/VW)
JIM AIM MOTORCYCLES (Hedingham)
MALDON TRAVEL SERVICES LTD. (Maldon)
SEARINGS MOTORCYCLES (Braintree)
Their support is greatly appreciated



Maplin Mechanical Services Ltd.
1426 London Road, Leigh-on-Sea, Essex.
Telephone Southend-on-Sea (0702) 79933
REFRIGERATION AIR CONDITIONING

**We'll make sure that
your customers
are all served at the
right temperature.**

Maplin Mechanical Services are the locally based experts in design and installation of air-conditioning and refrigeration systems with considerable experience of hotel, shop and restaurant requirements.

Take advantage of competitive pricing and superb after-sales service by contacting Maplin Mechanical at the address above.

We are No 1 in Essex

Are you one, 6, 19, 30, 33, 42, 47, 51, 55, 59, 61, 80, 81, 97, 350.

**Roberts (ex 73) Welcomes All
Numbers At Our Butt Lane D.I.Y.
Centre Maldon Essex**

(OFF HIGH STREET, OPPOSITE CAR PARK-BEHIND
QUEST MOTORS.)

Tel. Maldon 53041

Comprehensive Stock, Competitive Prices, Traditional
'Family' Service, Discount for Club Members.

(Sorry not open Sundays - Out Grassing!)

DUNMOW AND DISTRICT MOTOR CYCLE CLUB

Presents the Easter Scramble

To be held at

Park Farm
Stebbing
Essex

Sunday 19th April 1981

First Race 1.30 p.m.

ACU Permit No. S643

ACU Steward

Club Stewards

Clerk of the Course

Chief Marshal

I King

B Chapman F Beevis

T Clark

S Todd

Secretary of the Meeting

J Burroughs

4 Woodhall Grove

Bishops Stortford

Hertfordshire

WARNING

Motor Racing is dangerous. You are present at the meeting entirely at your own risk and this programme is issued subject to the condition that all persons having any connection with the promotion and/or organisation and/or conduct of the meeting including the owners of the land and drivers and owners of the vehicles and passengers in the vehicles are absolved from all liability in respect of personal injury (whether fatal or otherwise) to you or damage to your property howsoever caused.

OFFICIAL PROGRAMME

Price 30p.

LIST OF COMPETITORS - SOLO

No.	Name	Home Town	Machine	C.C.	Club
1.	P Clark	Ware	Kawasaki	250	Bury St Edmunds
3.	P Desborough	Elsworth	Maico	490	Bury St Edmunds
4.	M Lavelle	Orpington	Husqvarna	250	Southend
5	T Avery	Halstead	Husqvarna	430	Halstead
6.	D Cottrell	Norwich	KTM	420	Norwich Vikings
7.	S Nunn	Ely	Kawasaki	420	Bury St Edmunds
8.	C Taylor	Wisbech	Yamaha	400	Bury St Edmunds
9.	R Argent	Halstead	KTM 2506	495	Halstead
11.	A Clarke	Gillingham	CCM	500	Southend
12.	S Finch	Chelmsford	Yamaha	500	Braintree
14.	K Plummer	Bury St Edmunds	JBR	450	Bury St Edmunds
15.	R Parker	Norwich	Maico 490/250	450	Norwich Vikings
16.	B Atkinson	Shenfield	Rayner Yam	465	West Essex
17.	J Graham	Willingham	HPF Renegade	500	BSE
18.	I Miller	Thames Ditton	KTM 250/450	450	Aveley
19.	G Wallace	Dartford	Husqvarna	430	Southend
20	A Yallop	Ipswich	Maico 490/580	430	Triangle
25.	R Palmer	Braintree	Daltaco	250	Braintree
26.	G Neville		Yamaha	250	Halstead
27.	J Dormer		Yamaha	465	
28.	A Birkumshaw	Rayleigh	Maico	490	Dunmow
29.	K Nichol	Newport	Kawasaki	420/250	Dunmow
30.	G Finch	Chelmsford	CCM	500	Braintree
31.	G Brace	Saffron Walden	Yamaha	465	
32.	G Glasscock	B. Stortford	Maico	450	Halstead

We give away our
expertise . . .

Surprising? It is quite true! Clients who book travel or holidays through us do not pay a penny more than taking a chance and booking direct with an operator, airline or ferry company.

Why don't you take advantage of this free service for:
Inclusive and self-catering holidays by land, sea or air; Coach holidays; Ferry arrangements; Cruises; Hotels; Air travel; Car parks at airports; UK & foreign car hire; Business house travel; Holiday insurance & travellers cheques.

MALDON TRAVEL SERVICES LTD.



21 High Street, Maldon
Maldon 53580/52188



ALF HAGON PRODUCTS LTD.

350 High Road

Leyton, London, E10 6QQ

Tel.: 01-556 9200, 01-539 8416, 01-556 4447

WESLAKE & JAP MAIN DEALER

LARGE STOCKS OF ENGINES & SPARES

BEWLEY GEARBOXES, TRACKSTAR CLUTCHES

WHEEL BUILDING

OVER 3,000 ALLOY & CHROME RIMS IN STOCK, CAST & COMSTAR
WHEELS REPAIRED, FAST SERVICE

GIRLING GAS SHOCKS

COMPETITION AND ROAD UNITS ASSEMBLED TO YOUR REQUIREMENTS

AMAL CARBS

SPARES AND TUNE UP PARTS, FULL RANGE 28 TO 44 mm PETROL &
ALCOHOL 2 & 4 STROKE

SPROCKETS

SUPER TOUGH ALLOY SPROCKETS, 28 TO 62 TOOTH WESLAKE/
JAWA/ JAP SPROCKETS FROM STOCK OR BORED TO SUIT YOUR HUB.

HELICOILS

METRIC, BSF AND SPARK PLUG SIZES
NGK & CHAMPION PLUGS, RACER, SPORT AND WARM UP GRADES

**Beadblasting, Alloy and Magnesium Welding, Rebores, Crank
Repairs, Valve Seat Inserts, Engine Rebuilds, Gas Flowing**

Send £1 for catalogue No. 12

FAST RELIABLE SERVICE AND SENSIBLE PRICES

33.	D Heath	Sherring	CCM	500	Dunmow
34.	P Weingaertner	Bury St. Edmunds	Honda	500	Bury St Edmunds
35.	B Edwards	Swanley	Cheney BSA	540	Chelmsford
36.	R Parkin	Ely	Yamaha	500	Southend
37.	C Cowell	Littleport	CCM	500	Norwich Vikings
38.	A Covell	Colchester	CCM	500	Norwich Vikings
39.	G Calver	Hadleigh	CCM	580	Castle
40.	K Manning	Peltwell	CCM	550	Essex and Suffolk
41.	D Leveridge	Haverhill	CCM	580	Bury St Edmunds
42.	P Salmon	Colchester	CCM	580	Newmarket
43.	C Bright	Benfleet	Honda	320	Braintree
44.	M. Fuller	Haywards Heath	Hagon Yam	500	Southend
45.	R Dale	Camberly	Hagon Yam	500	Braintree
46.	T Fuller	Patcham	Honda	500/450	Braintree
47.	D Nicholls	Stowmarket	Honda	250	Chelmsford
48.	A Copping	Cambridge	Honda	250	Stowmarket
49.	D Benstead	Braintree	J Yamaha	250	Norwich King
50.	K. Kester	Saffron Walden	KTM	420	Braintree
51.	B Evans	Beccles	Husqvarna	390	Castle
52.	R Cook	Bury St. Edmunds	Kawasaki	420	Lowestoft
53.	J Kelly	Chelmsford	Yamaha	400	Bury St Edmunds
54.	C Eley	Faversham	Husqvarna	390	Chelmsford
55.	C Port	Hitchin	Maico	490	Ilford
56.	I Neal	Chelmsford	KTM	250	Bury St Edmunds
57.	I Hendry	Hatfield Heath	Yamaha	250	Chelmsford
58.	C Chapman	Chelmsford	Suzuki	250	Halstead
59.	N Kemp	Ipswich	Osborne Maico	250	Chelmsford
60.	N Tilbury	Stowmarket	Honda	250	Essex and Suffolk
61.	A Willis	Clacton	Maico	440	Stowmarket
62.	R Giles				Castle Colchester

<u>No</u>	<u>Name</u>	<u>Home Town</u>	<u>Machine</u>	<u>c.c.</u>	<u>Club</u>
7	A Dow W Stock	Stebbing	Wasp	750	Dunmow
8	R Gardner A Greenhorn	Hayes	Wasp	920	Halsstead
9.					
10.					
11.					
12.					
14.					
15.					
16.					

Rush with hush.



The new Renault 18 Turbo. Its 1600cc engine is capable of 115mph. Yet around town, it can return 28mpg[†]. It overtakes like a 2 litre. And at speed, it's as quiet as a 3 litre limousine.

◆ The price is just £6589*.
It's not going to hang around.

Take off here
Chantry Garage

(Bishop's Stortford) Ltd.

NORTHGATE END, BISHOP'S STORTFORD

Telephone 53127/8

RENAULT 18 Turbo

*Price (Correct at time of going to press) includes 15% VAT, Car tax and seat belts. Number plates and delivery extra.
†Government Test Figures: Renault 18 Turbo: Simulated urban cycle 28.8mpg/9.8 litres per 100km, constant 56mph.
44.1mpg/6.4 litres per 100km, constant 75mph 33.2mpg/8.5 litres per 100km

Wenden Garage Ltd.



WENDENS AMBO,
SAFFRON WALDEN, ESSEX
Tel: 40500



Breakdown Service
Any model serviced

Mini Specialist



CHASIS WELDING TO M.O.T. STANDARDS
M.O.T. BY APPOINTMENT
SERVICING
TYRES AT COMPETITIVE PRICES
EXHAUSTS FITTED FREE
BREAKDOWN AND CAR TRANSPORTER SERVICE



SELF DRIVE VANS AND CARS



LUXURY COACHES



SOUTH STREET, BRAINTREE, ESSEX
Telephone Braintree (0376) 25078

Event 1 - Allcomers up to 250c.c. - Over 3 Legs

Sponsored by: CHANTRY GARAGE - Renault

Race 1

Heat 1 - First Leg

- | | | |
|---------------|----------------|---------------|
| 1. P Clark | 29. K Nichol | 58. C Chapman |
| 4. M Lavelle | 48. A Copping | 59. N Kemp |
| 5. T Avery | 49. D Benstead | 60. N Tilbury |
| 9. R Argent | 50. K Kester | 61. A Willis |
| 26. G Neville | 57. I Hendry | 65. R Short |
| 67. D Kemp | | |

Top Six Score. - 1st-6. 2nd-5. 3rd-4. 5th-2. 6th-1

1..... 2..... 3..... 4..... 5..... 6.....

Race 2

Heat 2

- | | | |
|---------------|-----------------|---------------|
| 14. K Plummer | 75. J Gatrell | 84. M Tomlin |
| 15. R Parker | 75. K Hayes | 87. J Green |
| 18. I Miller | 78. R Rance | 88. D Cullen |
| 19. G Wallace | 80. P Cranstone | 89. J Adamson |
| 70. E Reed | 82. B Dobson | 96. B Dowsett |

1..... 2..... 3..... 4..... 5..... 6.....

Event 4 - Sidecars up to 1000c.c. - Over 6 Legs

Sponsored by: SEARINGS MOTOR CYCLES

Race 3 - First Leg

- | | | |
|----------------|--------------|-------------|
| 1. G Cotterell | 2. T Girling | 4. P Miller |
| 3. R Chrisp | 5. C Helm | 6. S Lewis |
| 7. A Dow | 8. R Gardner | |

Top Five Score - 1st-5. 2nd-4. 3rd-3. 4th-2. 5th-1

1..... 2..... 3..... 4..... 5.....

Event 2 - Allcomers 251 - 650c.c.

Sponsored by: DR. IAN HEATING - WITHAM

Race 4

Heat 1

- | | | |
|------------------|--------------------|---------------|
| 3. P Desborough | 29. K Nichol | 35. B Edwards |
| 4. M Lavelle | 30. G Finch | 36. R Parkin |
| 5. T Avery | 31. G Irace | 37. K Cowell |
| 6. D Cottrell | 32. G Classcock | 38. A Covell |
| 27. J Dormer | 33. D Feath | 39. G Calver |
| 28. A Birkumshaw | 34. P Veingaertner | 40. K Manning |

41. D Leveridge
First Five to Final

1..... 2..... 3..... 4..... 5.....

Race 5

Heat 2

- | | | |
|--------------|----------------|----------------|
| 7. S Nunn | 44. M Fuller | 53. J Kelly |
| 8. C Taylor | 45. R Dale | 54. C Eley |
| 9. R Argent | 46. T Fuller | 55. C Port |
| 20. A Yallop | 47. D Nicholls | 56. I Neal |
| 42. P Salmon | 51. B Evans | 62. R Giles |
| 43. C Bright | 52. R Cook | 63. G Lonergan |

1..... 2..... 3..... 4..... 5.....

Race 6

Heat 3

- | | | |
|---------------|----------------|----------------|
| 11. A Clark | 68. M Aldous | 77. T Swailes |
| 12. S Finch | 69. K Soall | 79. C Rance |
| 14. K Plummer | 71. M Aspinell | 81. T Francis |
| 15. R Parker | 73. G Vatts | 83. C White |
| 64. N Reed | 74. D Cross | 85. M Godwin |
| 66. P Domain | 76. A Sturla | 86. D Blackman |

1..... 2..... 3..... 4..... 5.....

SEARINGS

MOTOR CYCLES

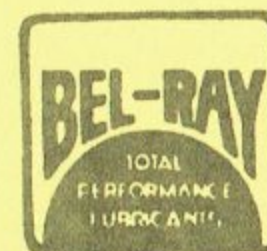
Vast Stocks of New & Used MOTOCROSS, ENDURO, TRIALS and ROAD MACHINES

SUZUKI

HONDA

YAMAHA

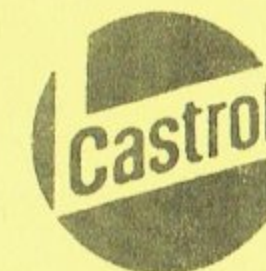
KAWASAKI, LAVERDA, TRIUMPH



23 North Street
Bishop's Stortford
Herts
Tel. 0279-51897

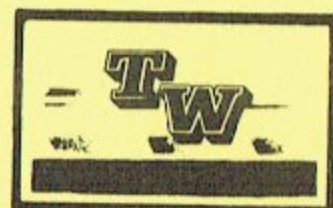


Rayne Road
Braintree
Essex
Tel. Braintree 42688



70-72 London Road
Lexden
Colchester
Tel. 0206-46007

TONY WEBB



★ WHOLESALE, RETAIL AND EXPORT, ★



For all your
SPEEDWAY and GRASSTRACK EQUIPMENT



Stockist for

JAWA — WESLAKE — HAGON



Sales and Services at
HACKNEY, IPSWICH, CANTERBURY, CRAYFORD, RYE HOUSE
and ALL EASTERN CENTRE MEETINGS (CLUB PERMITTING)
38 NAYLAND ROAD, BRAINTREE, ESSEX

D&A Rayner



YAMAHA

★ ★
Top Ten
MOTO-CROSS DEALER



YZ — IT — TY
FULL RANGE OF MODELS IN STOCK AT 10% DISCOUNT
PHONE DAVE OR BRIAN ON 01-590 7367 or
Call and see us

Race 7

Heat 4

- | | | |
|----------------|----------------|----------------|
| 16. B Atkinson | 92. C Boots | 100. G Brooks |
| 17. J Graham | 93. P Craven | 101. N Pooley |
| 18. I Miller | 94. P O'Reilly | 102. K Lambert |
| 19. G Wallace | 95. M Stock | 104. L Bateup |
| 90. M Laudrum | 97. K Barker | 105. B Bird |
| 91. A Hopper | 99. P Yarnall | |

1..... 2..... 3..... 4..... 5.....

EVENT 4 - Sidecars up to 1000 c.c.

Sponsored by: SEARINGS MOTOR CYCLES

Race 8 - Second Leg

- | | | |
|----------------|--------------|-------------|
| 1. G Cotterell | 2. T Girling | 3. R Chrisp |
| 4. P Miller | 5. C Helm | 6. S Lewis |
| 7. A Dow | 8. R Gardner | 9. |
| 10. | 11. | 12 |
| 14. | 15. | 16. |

1..... 2..... 3..... 4..... 5..... 6.....

EVENT 3 - Four Strokes - Over 3 Legs

Sponsored by: MALDON TRAVEL SERVICES LIMITED

Race 9 - First Leg

- | | | |
|--------------------|-----------------|----------------|
| 11. A Clark | 35. B Edwards | 42. P Salmon |
| 12. S Finch | 36. R Parkin | 43. C Bright |
| 17. J Graham | 37. K Cowell | 44. M Fuller |
| 20. A Yallop | 38. A Covell | 45. R Dale |
| 30. G Finch | 39. G Calver | 46. T Fuller |
| 33. D Heath | 40. K Manning | 47. D Nicholls |
| 34. P Weingaertner | 41. D Leveridge | 104. L Bateup |
| 105. B Bird | | |

Top Six Score. - 1st-6. 2nd-5. 3rd-4. 4th-3. 5th-2.
6th-1.

1..... 2..... 3..... 4..... 5..... 6.....

EVENT 1 - Allcomers up to 250 c.c.

Sponsored by: CHANTRY GARAGE - Renault

Race 10

Heat 1 - Second Leg

- | | | |
|---------------|--------------|-----------------|
| 1. P Clark | 29. K Nichol | 80. P Cranstone |
| 4. M Lavelle | 75. K Hayes | 82. B Dobson |
| 18. I Miller | 78. R Rance | 60. N Tilbury |
| 19. G Wallace | 50. A Kester | 61. A Willis |
| 26. G Neville | 57. I Hendry | 88. D Cullen |
| | | 89. J Adamson. |

1..... 2..... 3..... 4..... 5..... 6.....

Race 11

Heat 2

- | | | |
|---------------|----------------|--------------|
| 5. T Avery | 70. E Reed | 59. N Kemp |
| 9. R Argent | 72. J Gattrell | 84. M Tomlin |
| 14. K Plummer | 48. A Copping | 87. J Green |
| 15. R Parker | 49. D Benstead | 65. R Short |
| 25. R Palmer | 58. C Chapman | 67. D Kent |
| 96. E Dowsett | | |
| 98. C Bonnett | | |

1..... 2..... 3..... 4..... 5..... 6.....

EVENT 4 - Sidecars up to 1000 c.c. - Race 12

Sponsored by: SEAPINGS MOTOR CYCLES

- | | | |
|----------------|--------------|-------------|
| 1. G Cotterell | 2. T Garling | 3. R Chrisp |
| 4. P Miller | 5. C Helm | 7. A Dow |
| 6. S Lewis | 8. R Gardner | 9. |
| 10. | 11. | 12. |
| 14. | 15. | 16. |

1..... 2..... 3..... 4..... 5..... 6.....

EVENT 6 - Experts - Over Three Legs

Sponsored by: JIM AIM MOTOR CYCLES

Race 13 - First Leg

- | | | |
|-----------------|---------------|-----------------|
| 1. P. Clark. | 8. C Taylor | 16. B. Atkinson |
| 3. P Desborough | 9. R Argent | 17. J Graham |
| 4. M Lavelle | 11. A Clarke | 13. I Miller |
| 5. T Avery | 12. S Finch | 19. G Wallace |
| 6. D Cottrell | 14. K Plummer | 20. A Yallop |
| 7. S Nunn | 15. R Parker | |

Top Six Score 1st-6. 2nd-5. 3rd-4. 4th-3. 5th-2. 6th-1. point

1..... 2..... 3..... 4..... 5..... 6.....

EVENT 7 - Junior Allcomers

Sponsored by: (Audi) SHEPHERDS (Volkswagen)

Race 14

Heat 1

- | | | |
|------------------|--------------------|-----------------|
| 27. J Dormer | 31. G Brace | 37. K Cowell |
| 28. A Birkumshaw | 32. G Glasscock | 38. A Covell |
| 29. K Nichol | 33. D Heath | 39. G Calver |
| 30. G Finch | 34. P Weingaertner | 40. K Manning |
| 25. R Palmer | 35. B Edwards | 41. D Leveridge |
| 36. R Parkin | | |

First Four to Final

1..... 2..... 3..... 4.....

Race 15

Heat 2

- | | | |
|----------------|----------------|--------------|
| 43. C Bright | 48. A Copping | 53. J Kelly |
| 44. M Fuller | 49. D Benstead | 54. C Eley |
| 45. R Dale | 50. K Kester | 55. C Port |
| 46. T Fuller | 51. B Evans | 56. I Neal |
| 47. D Nicholls | 52. R Cook | 57. I Hendry |
| 26. G Neville | | |

1..... 2..... 3..... 4.....

INTERVAL

EVENT 4 - Sidecars up to 1000 c.c.

Sponsored by: SEARINGS MOTOR CYCLES
Race 16 - Fourth Leg

- | | | |
|----------------|--------------|-------------|
| 1. G Cotterell | 2. T Girling | 3. R Chrisp |
| 4. P Miller | 7. A Dow | 6. S.Lewis |
| 5. C Helm | 8. A Gardner | 9. |
| 10. | 11. | 12. |
| 14. | 15. | 16. |
- 1..... 2..... 3..... 4.....5..... 6.....

EVENT 7 - Junior Allcomers

Sponsored by: (Audi) SHEPHERDS (Volkswagen)
Race 17 -
Heat 3

- | | | |
|----------------|--------------|----------------|
| 59. N Kemp | 64. N Reac | 69. K Soall |
| 60. N Tilbury | 65. R Shoit | 70. J Reed |
| 61. A Willis | 66. P Domen | 71. D Aspinell |
| 62. R Giles | 67. D Kemp | 72. J Gatrell |
| 63. G Lonergan | 68. M Aldous | 73. G Watts |
| 74. D Cross | | |
- 1..... 2..... 3..... 4.....

Race 18
Heat 4

- | | | |
|---------------|-----------------|----------------|
| 75. K Hayes | 80. P Cranstone | 85. M Godwin |
| 76. A Sturla | 81. J Francis | 86. D Blackman |
| 77. T Swailes | 82. P Dobson | 87. J Green |
| 78. R Rance | 83. C White | 88. D Cullen |
| 79. C Rance | 84. M Tomlin | 89. J Adamson |
- 1..... 2..... 3..... 4.....



SHEPPARDS



The complete Audi Volkswagen facility

Dane Street, Bishop's Stortford
Tel: Bishop's Stortford 54680 or 51974

Volkswagen Dealers since 1969
Audi Dealers since 1974

SALES

We have fully trained sales staff who can advise you on the best vehicle for your needs and can arrange all aspects of finance including leasing. We generally hold over 25 new vehicles in stock which means we can offer choice and a quick delivery on most models. Call us for a test drive.

AFTER SALES

We boast a large Parts Department with over £45,000 stock, backed up by speedy delivery from V.A.G. (U.K.) Ltd. warehouse at Milton Keynes.

Modern, fully equipped workshops with latest computer analysis equipment. Our mechanics all attend regular Audi Volkswagen training courses as a result of this we are fully conversant with all aspects of our technically advanced range of vehicles. Also a body repair shop offering low bake oven and refurbishing to Audi Volkswagen standards in order to retain the six-year body protection warranty.

We are members of the M.A.A. and V.B.R.A. and comply with their codes of practice.



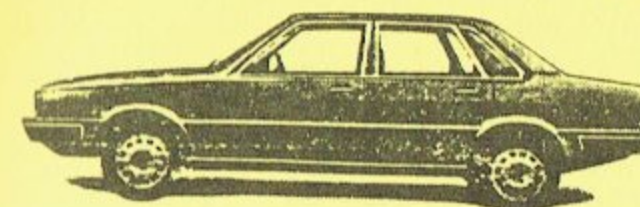
Golf Convertible



Audi 100



Audi 80

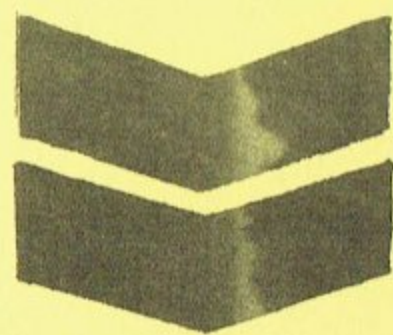


VW Van

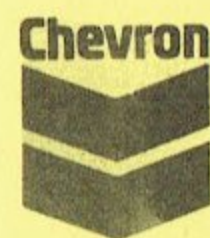


Polo

Chevron



QUALITY
PETROL
&
OILS



GABLES

SERVICE STATION
FOR ALL YOUR
FAMILY MOTORINGS
NEEDS

77 HIGH ST., DUNMOW

RENAULT



SERVICE
AGENT
FOR THE
DUNMOW
AREA

JOHN PEASE

MOTOR CYCLES

YOUR



YAMAHA



SPECIALIST IN CHELMSFORD

* * * * *

SPARES — CLOTHING — ACCESSORIES — INSURANCE
in fact

EVERYTHING FOR THE MOTORCYCLIST

91 WOOD STREET, CHELMSFORD
Tel: 64350



Race 19
Heat 5

- | | | |
|-----------------|---------------|----------------|
| 90. M Laudrum | 95. M Stock | 100. G Brooks |
| 91. Hopper | 96. B Dowsett | 101. N Pooley |
| 92. C Boots | 97. K Barker | 102. K Lambert |
| 93. P Craven | 98. C Bonnett | 104. L Bateup |
| '94. P O'Reilly | 99. P Yarnall | 105. B Bird |

1..... 2..... 3..... 4.....

Event 6 - Experts

Sponsored by: JIM AIM MOTOR CYCLES

Race 20 - Second Leg

- | | | |
|-----------------|---------------|----------------|
| 1. P Clark | 8. C Taylor | 16. B Atkinson |
| 3. P Desborough | 9. R Argent | 17. I Graham |
| 4. M Lavelle | 11. A Clarke | 18. I Miller |
| 5. T Avery | 12. S Finch | 19. G Wallace |
| 6. D Cottrell | 14. K Plummer | 20. A Yallop |
| 7. S Nunn | 15. R Parker | |

1..... 2..... 3..... 4..... 5..... 6.....

Event 7 - Sidecars up to 1000c.c.

Sponsored by: SEARING MOTOR CYCLES

Race 21 - Fifth Leg

- | | | |
|----------------|--------------|-------------|
| 1. G Cotterell | 2. T Girling | 3. R Chrisp |
| 4. P Miller | 7. A Dow | 6. S Lewis |
| 5. C Helm | 8. R Gardner | |

1..... 2..... 3..... 4..... 5..... 6.....

Event 3 - Four Strokes

Sponsored by: MALDEN TRAVEL SERVICES LIMITED

Race 22 - Second Leg

- | | | |
|---------------|-----------------|--------------------|
| 11. A Clark | 12. J Finch | 17. J Graham |
| 30. G Finch | 33. D Heath | 34. P Weingaertner |
| 36. R Parkin | 37. K Cowell | 38. A Covell |
| 40. K Manning | 41. D Leveridge | 42. P Salmon |
| 44. M Fuller | 45. R Dale | 46. T Fuller |
| 20. A Yallop | 35. B Edwards | 39. G Calver |
| 43. C Bright | 47. D Nicholls | 104. L Bateup |

Top Six Score: - 1st-6. 2nd-5. 3rd-4. 5th-2
6th-1.

1..... 2..... 3..... 4..... 5..... 6.....

Event 1 - Allcomers up to 250c.c.

Sponsored by: CHANTRY GARAGE - Renault

Race 23 - Third Leg

- | | | |
|----------------|-----------------|---------------|
| 1. P Clark | 72. J Gatrell | 59. N Kemp |
| 15. R Parker | 75. K Hayes | 60. N Tilbury |
| 18. I Miller | 50. K Kester | 89. J Adamson |
| 9. R Argent | 82. B Dokson | 88. D Cullen |
| 26. G Neville | 80. P Cranstone | 67. D Kemp |
| 25. R Palmer | | |
| 49. D Benstead | | |

1..... 2..... 3..... 4..... 5..... 6.....

Race 24

- | | | |
|---------------|---------------|---------------|
| 14. M Lavelle | 78. R Rarce | 58. C Chapman |
| 19. G Wallace | 70. F Reed | 84. M Tomlin |
| 5. T Avery | 48. A Copping | 61. A Willis |
| 14. K Plummer | 57. I Herdry | 89. J Adamson |
| 29. K Nichol | 82. F Dokson | 65. R Short |
| 96. B Dowsett | 98. C Bornett | |

1..... 2..... 3..... 4..... 5..... 6.....

DAMAN HEATING

2, COLLINGWOOD ROAD, WITHAM, ESSEX.

Tel WITHAM 514896

SUPPLIERS OF:

BATHROOM SUITES

KITCHEN UNITS

PLUMBING & HEATING

TRADE AND RETAIL

- ★ RED STAR GARAGE & TYRE SERVICE ————— CAMBRIDGE ROAD, QUENDON
Tel: Rickling 373 or 389
- ★ RED STAR TYRE SERVICE ————— 3 KATHERINE ROAD, EAST HAM, E6
Tel: 01-427 5056 or 9947
- ★ RED STAR TYRE SERVICE ————— THE WHITE HOUSE, DUNMOW RD.,
(A120) FELSTED.
Tel: Great Dunmow 820036

red star TYRE

DISCOUNTS GALORE, CASH & CARRY
for DUNMOW & DISTRICT CLUB

BONANZA

FOR

BENELLI — BMW — DUCATI — HONDA — KAWASAKI — LAVERDA —
MOTO GUZZI — M.V.ACUSTA — SUZUKI — TRIUMPH — YAMAHA

on

Rain Cheetah — Road Runner — Red Arrow — Mandrake —
Safety Mileage — TT100 (K181 or K81) — Phantom — Pentacross —
RING OR CALL — MONDAY — SATURDAY — FULL RANGE USUALLY IN STOCK

B M G. MOTORCYCLES

- ★ KAWASAKI
- ★ CZ — JAWA
- ★ VELOCETTE
- MOT CENTRE
- PLUG SPARES & SERVICING ?
- SAME DAY REBORE SERVICE
- MOST PISTONS IN STOCK
- CRANKSHAFT REPAIRS
- ENGINE REBUILDS

BMG GRASSTRACK SERVICE

FUEL — OIL — TYRES — CABLES — CHAINS — GLOVES — ETC.
ANTIG — BARBER & HAGON SPARES ON OUR VAN



ATTENDING MOST E.C. MEETINGS
510 HIGH ROAD, ILFORD, ESSEX 1GI IVE 01-590 9436

Event 6 - Experts

Sponsored by JIM AIM MOTOR CYCLES

Race 25 - Third Leg

- | | | |
|-----------------|---------------|----------------|
| 1. P Clark | 8. C Taylor | 16. B Atkinson |
| 3. P Desborough | 9. R Argent | 17. I Graham |
| 4. M Lavelle | 11. A Clarke | 18. I Miller |
| 5. T Avery | 12. S Finch | 19. G Wallace |
| 6. D Cottrell | 14. K Plummer | 20. A Yallop |
| 7. S Nunn | 15. R Parker | |

1..... 2..... 3..... 4..... 5..... 6.....

Event 3 - Four Strokes

Sponsored by: MALDON TRAVEL SERVICES LIMITED

Race 26 - Third Leg

- | | | |
|---------------|--------------------|----------------|
| 11. A Clarke | 41. D Leveridge | 20. A Yallop |
| 30. G Finch | 45. R Dale | 35. B Edwards |
| 36. R Parkin | 17. | 39. G Calver |
| 40. K Manning | 34. P Weingaertner | 43. C Bright |
| 44. M Fuller | 38. A Covell | 47. D Nicholls |
| 12. S Finch | 42. P Salmon | 104. L Bateup |
| 33. D Heath | 46. T Fuller | 105. B Bird |
| 37. K Cowell | | |

1..... 2..... 3..... 4..... 5..... 6.....

Event 2 - Allcomers 251 - 650 c.c.

Sponsored by: DAMAN HEATING

Race 27 - Final

- | | | | | |
|--------------|-------|-------|-------|-------|
| From Heat 1. | | | | |
| From Heat 2. | | | | |
| From Heat 3. | | | | |
| From Heat 4. | | | | |

Event 4 - Sidecars

Sponsored by: SPARINGS MOTOR CYCLES

Race 28 - Sixth Leg

- | | | |
|----------------|--------------|-------------|
| 1. G Cotterell | 2. T Gilling | 3. R Chrisp |
| 4. P Miller | 5. C Helm | 6. S Lewis |
| 7. A Dow | 8. R Gardner | 9. J. J. J. |
| 10. | 11. | 12. |
| 14. | 15. | 16. |

Event 7 - Junior Allcomers

Sponsored by: (Auli) SHEPHERDS (Volkswagen)

Race 29 - Final

- | | | | | | |
|--------------|-------|-------|-------|-------|-------|
| From Heat 1. | | | | | |
| From Heat 2. | | | | | |
| From Heat 3. | | | | | |
| From Heat 1. | | | | | |
- 1..... 2..... 3..... 4..... 5..... 6.....

SCORE CHART

Event 1 - Allcomers up to 250cc.

No.	Leg.1.	Leg 2.	Leg 3.	TOTAL
1.				
4.				
5.				
9.				
14.				
15.				
18.				
19.				
25.				
26.				
29.				
48.				
49.				
50.				
57.				
58.				
59.				
60.				
61.				
65.				
67.				
70.				
72.				
75.				
78.				
80.				
82.				
84.				
87.				
88.				
89.				
96.				
98.				

SCORE CHART

Event 3 - Four Strokes

No.	Leg 1.	Leg 2.	Leg 3.	TOTAL
11.				
12.				
17.				
20.				
30.				
33.				
34.				
35.				
36.				
37.				
38.				
39.				
40.				
41.				
42.				
43.				
44.				
45.				
46.				
47.				
104.				
105.				

JIM AIM

MOTORCYCLES

★ **COMPETITION SPECIALIST** ★
FOR

KTM MOTOCROSS and ENDURO

WE ALSO SUPPLY ALL MODELS
FROM

BULTACO, KAWASKI, ITALJET, MZ

and **PEUGEOT MOPED RANGES**

NORTON, TRIUMPH, BSA, SPARES



LARGE STOCKS OF ACCESORIES INCLUDING

Belstaff Clothing, T.T. Leathers, Bell Helmets, Project 9,
M/X Clothing, Trials Wellies, Izumi Chains, Bel-Ray,
Castrol "R" etc., Crankshaft Repairs, Fresco Silencers,
M.O.T. Testing, Alpine Stars Boots Etc.

147 SWAN STREET, SIBLE HEDINGHAM, ESSEX. Tel. (0787) 60671

FOWLMERE

ENGINEERING LIMITED

HEATING AND WELDING PLANT HIRE



FOR ALL WELDING SERVICES
HEATING AND WELDING PLANT HIRE
INDUSTRIAL GAS-WELDING SUPPLIES
AND SPECIALIST WELDING
FOWLMERE 265
FOWLMERE, ROYSTON, HERTS.

PLEASE SUPPORT OUR ADVERTISERS

SHEENE, NOYCE, LAMPKIN
Take some beating on bikes?

EMPIRE SALON

Take some beating for Hairstyling
1 CHEQUERS LANE, GT. DUNMOW TEL. 2777



also at:—

42 SPRINGFIELD ROAD, CHELMSFORD TEL. 352962
6 BROOMFIELD ROAD, CHELMSFORD

SCORE CHART

Events 4 and 5

No.	Leg 1.	Leg 2	Leg 3	Leg 4	Leg 5	Leg 6.	TOTAL
1.							
2.							
3.							
4.							
5.							
6.							
7.							
8.							
9.							
10.							
11.							
12.							
14.							

SCORE CHART

Experts - Event 6

No.	Leg 1.	Leg 2.	Leg 3.	TOTAL
1.				
2.				
3.				
4.				
5.				
6.				
7.				
8.				
9.				
11.				
12.				
14.				
15.				
16.				
17.				
18.				
19.				
20.				

IMPORTANT NOTICE



LADIES AND GENTLEMEN our meeting to-day is supported commercially by our Sponsors and Advertisers.

They have helped considerably to hold our admission prices this year.

We are extremely grateful for their support, and need YOUR help to gain their continuing good favour.

We are therefore asking you to mention the Dunmow and District M.C.C. when you purchase any item or service from our Sponsors or Advertisers.

Thank you for your support here to-day, we hope you have enjoyed this event.



(Don't miss the reduced admission vouchers available from our Sponsors 2 weeks prior to our next two events.)

Grass Tracks

UGLEY May 17th & June 21st



RAYMENTS OF PELHAM



REAL DRAUGHT BBA BITTER
IN HERTS AND ESSEX

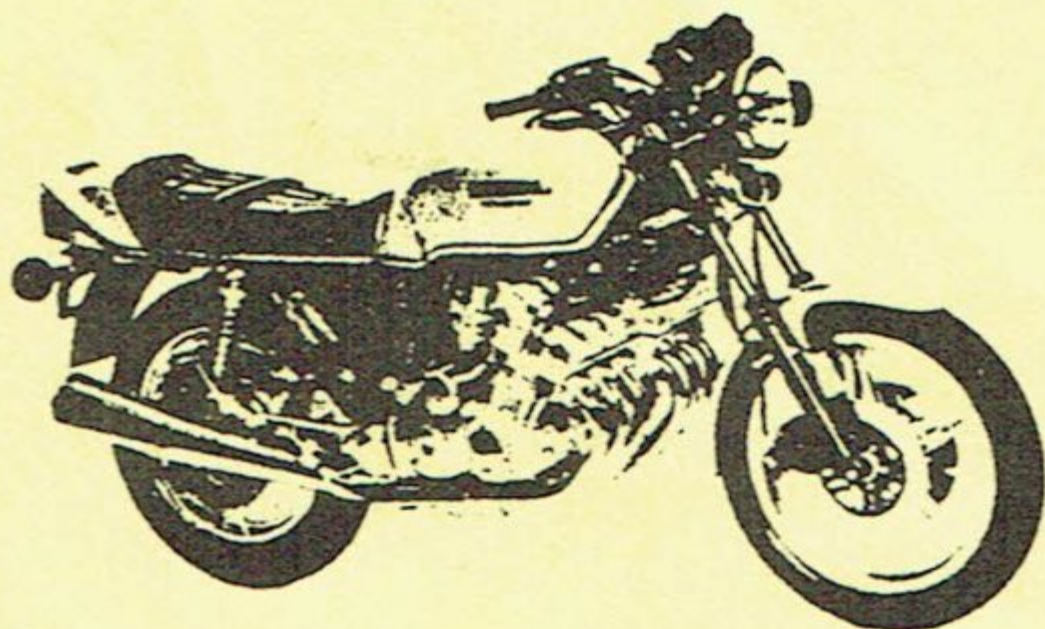
FROM

YOUR COUNTRY BREWER

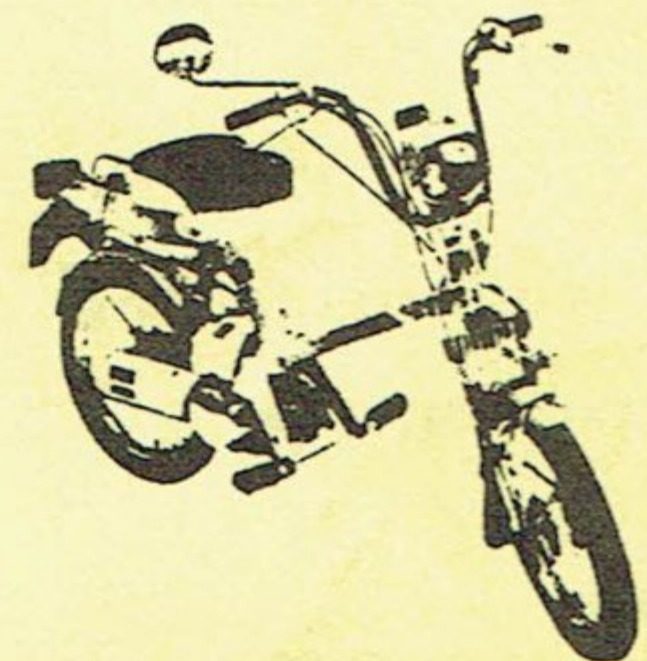
BROOMFIELD MOTOR CYCLES



THE **HONDA** CENTRE



LITTLE
AND
LARGE



WE STOCK THEM ALL!
EAST ANGLIA'S MAIN HONDA DEALER
FINANCE TERMS FROM NO DEPOSIT
WRITTEN QUOTATIONS ON REQUEST
Telephone—Chelmsford 352010 or 60224
THE PARADE SHOWROOM

245/247 BROOMFIELD ROAD, CHELMSFORD